

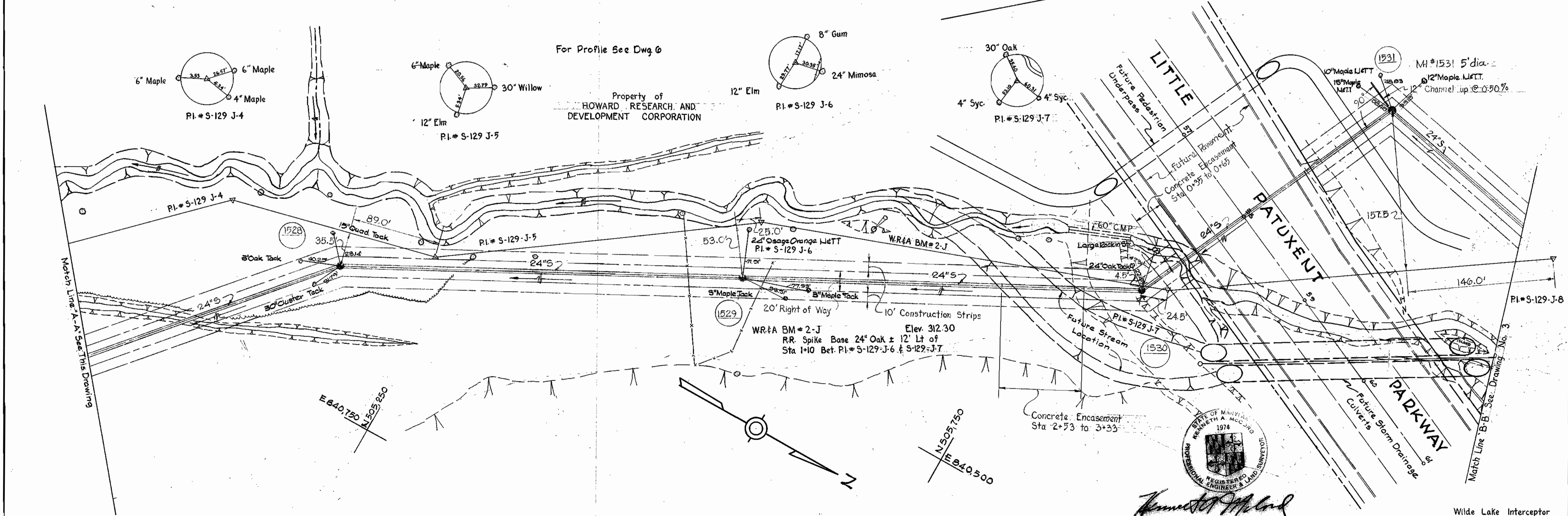
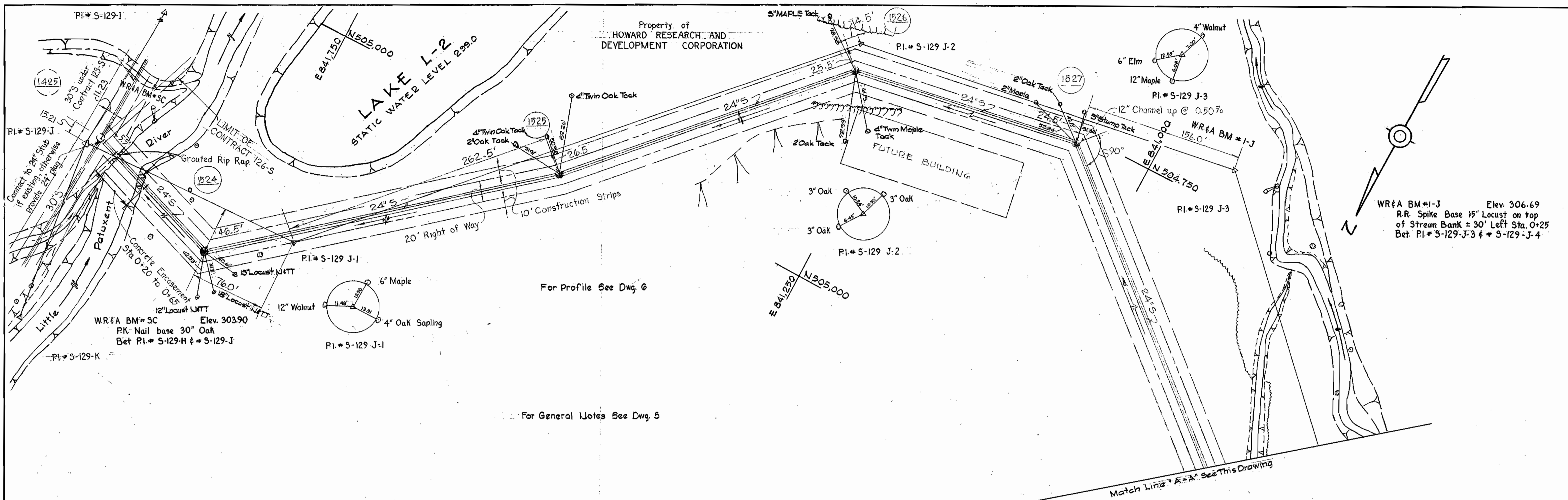
CONTRACT 126-S
WILDE LAKE INTERCEPTOR
HOWARD COUNTY METROPOLITAN COMMISSION
ELLICOTT CITY, MARYLAND



W. A. McCord

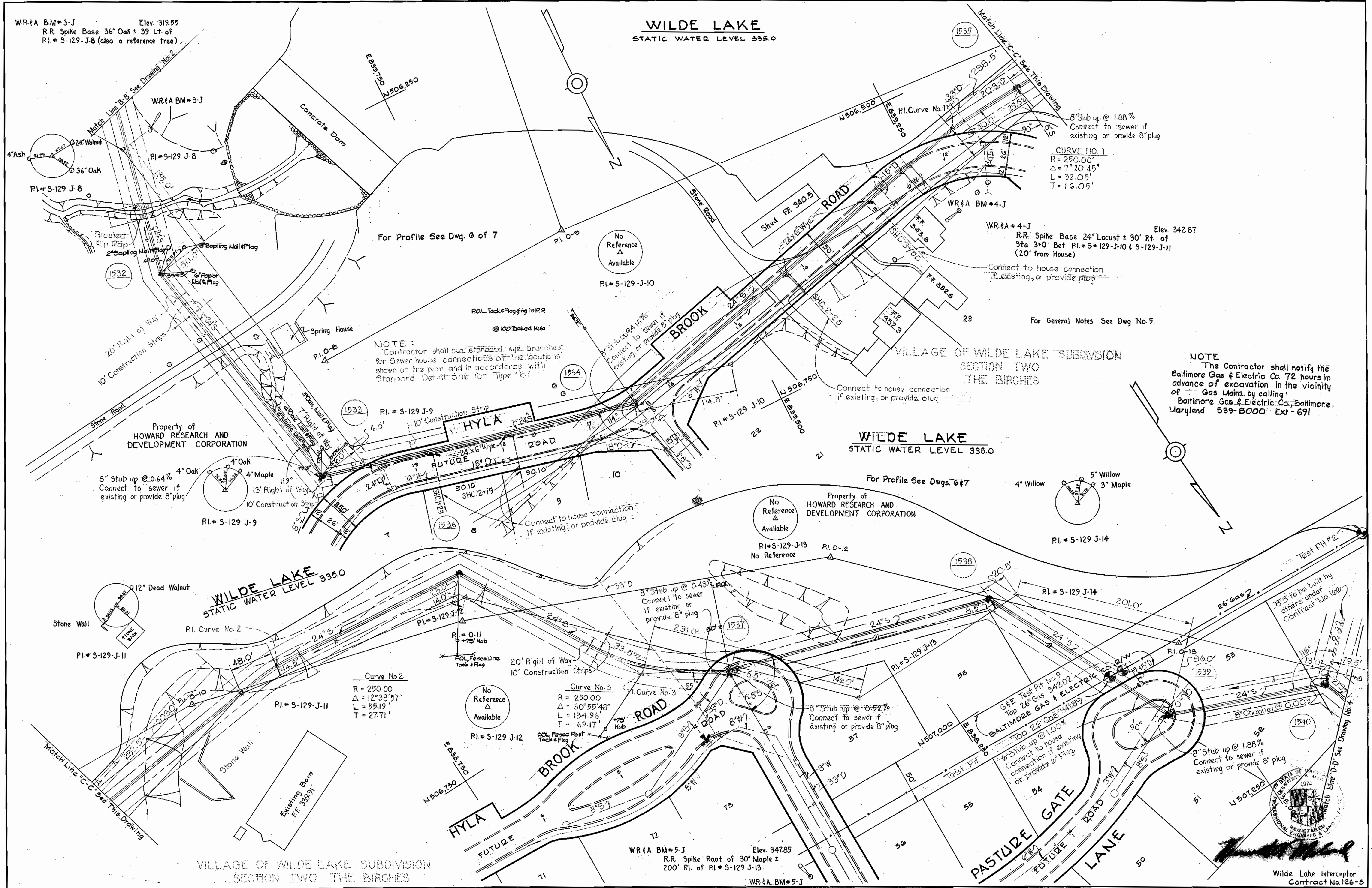
Wilde Lake Interceptor
Cont. No. 126-S

WHITMAN, REQUARDT & ASSOCIATES ENGINEERS 1304 ST. PAUL ST. BALTIMORE, MARYLAND	HOWARD COUNTY METROPOLITAN COMMISSION DATE: 10-16-66 CHIEF ENGINEER	CONTRACT NO. 126-S	LOCATION MAP	COLUMBIA VILLAGE OF WILDE LAKE ELECTION DISTRICT-CLARKSVILLE No. 5	DRAWING NO. 1 OF 7 SCALE AS SHOWN
---	---	--------------------	--------------	--	--------------------------------------



WHITMAN, REQUARDT & ASSOCIATES ENGINEERS 1304 ST. PAUL ST. BALTIMORE, MARYLAND	HOWARD COUNTY METROPOLITAN COMMISSION DATE 12-16-66 <i>W. O. Elliott</i> CHIEF ENGINEER	CONTRACT NO. 126-S	PLAN OF SEWER MAINS	COLUMBIA VILLAGE OF WILDE LAKE ELECTION DISTRICT-CLARKSVILLE No.5	DRAWING NO. 2 OF 7 SCALE 1"=50' 504-481 505-482 506-481
---	--	--------------------	------------------------	---	---

W. O. 5651 AS BUILT Nov. 20, 1969



W.R.#A B.M.#3-J Elev. 319.55
 R.R. Spike Base 36" Oak ± 39' Lt. of
 P.I.# S-129-J-8 (also a reference tree)

WILDE LAKE
 STATIC WATER LEVEL 335.0

8" Stub up @ 1.88%
 Connect to sewer if
 existing or provide 8" plug

CURVE NO. 1
 R = 250.00'
 Δ = 7° 20' 45"
 L = 32.05'
 T = 16.05'

NOTE:
 Contractor shall set standard wye branches
 for sewer house connections at the locations
 shown on the plan and in accordance with
 Standard Detail S-16 for Type "B"

NOTE:
 The Contractor shall notify the
 Baltimore Gas & Electric Co. 72 hours in
 advance of excavation in the vicinity
 of Gas Mains by calling
 Baltimore Gas & Electric Co., Baltimore,
 Maryland 689-8000 Ext-691

WHITMAN, REQUARDT & ASSOCIATES
 ENGINEERS
 1304 ST. PAUL ST.
 BALTIMORE, MARYLAND

HOWARD COUNTY METROPOLITAN COMMISSION
 DATE 12-16-66
 W. O. Libbert
 CHIEF ENGINEER

CONTRACT NO. 126-S

**PLAN OF
 SEWER MAINS**

**COLUMBIA
 VILLAGE OF WILDE LAKE
 ELECTION DISTRICT-CLARKSVILLE No.5**

**DRAWING
 NO. 3
 OF 7**

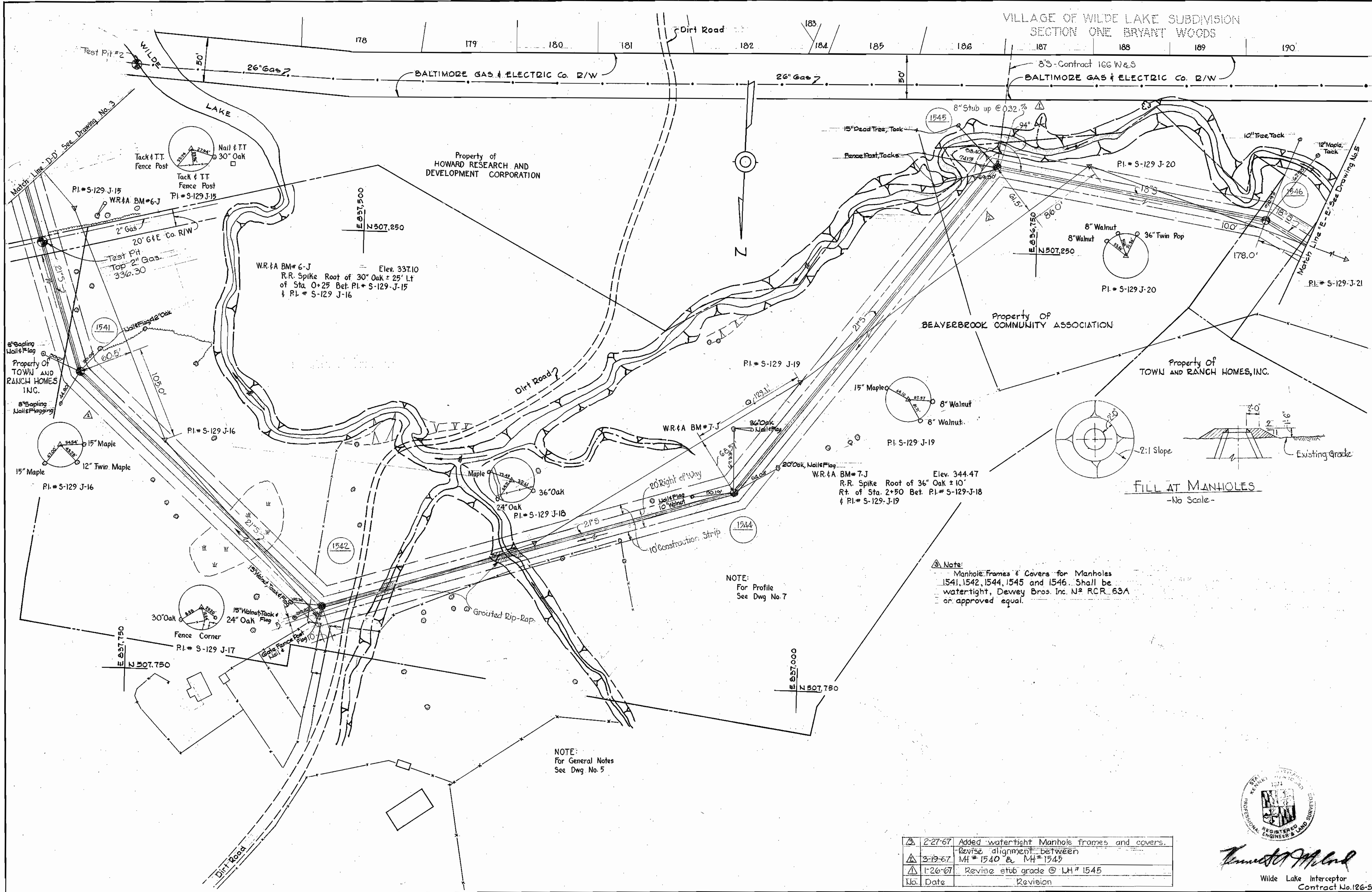
**SCALE
 1" = 50'**

W. O. 5651

AS BUILT Nov. 20, 1969

WS 126-S/3

VILLAGE OF WILDE LAKE SUBDIVISION
SECTION ONE BRYANT WOODS

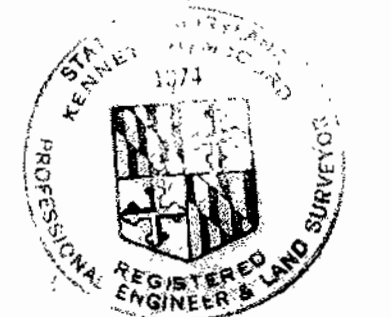


NOTE:
For Profile
See Dwg No. 7

Note:
Manhole Frames & Covers for Manholes
1541, 1542, 1544, 1545 and 1546. Shall be
watertight, Dewey Bros. Inc. N° RCR_63A
or approved equal.

NOTE:
For General Notes
See Dwg No. 5

2-27-67	Added watertight Manhole frames and covers.
3-19-67	Revise alignment between MH # 1540 & MH # 1545
1-26-67	Revise stub grade @ LH # 1545
No. Date	Revision



Thomas J. Mahan
Wilde Lake Interceptor
Contract No. 126-S

WHITMAN, REQUARDT & ASSOCIATES
ENGINEERS
1304 ST. PAUL ST.
BALTIMORE, MARYLAND

HOWARD COUNTY METROPOLITAN COMMISSION
12-16-66
DATE
W. O. Liburt
CHIEF ENGINEER

CONTRACT NO. 126-S

PLAN OF
SEWER MAINS

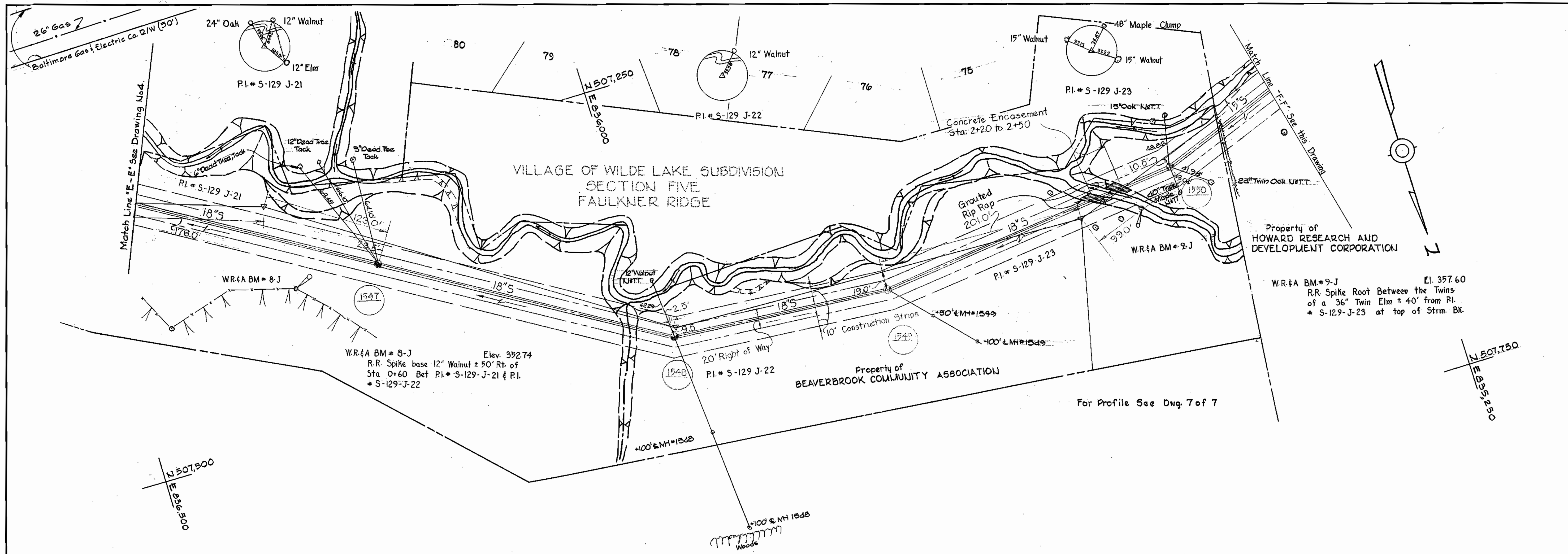
COLUMBIA
VILLAGE OF WILDE LAKE
ELECTION DISTRICT CLARKVILLE No. 5

DRAWING NO. 4 OF 7
SCALE 1" = 50'

W. O. 5691

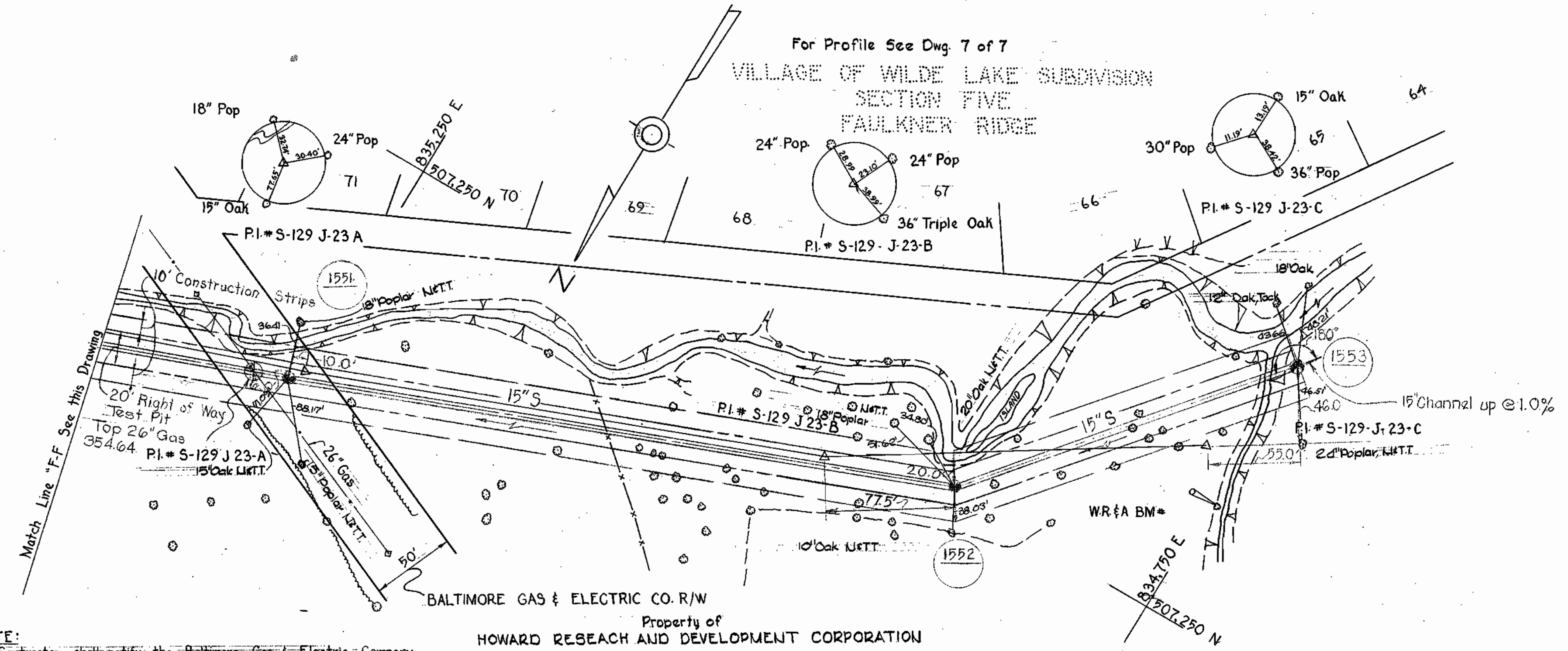
AS BUILT Nov. 29, 1969

WS 126-S/4



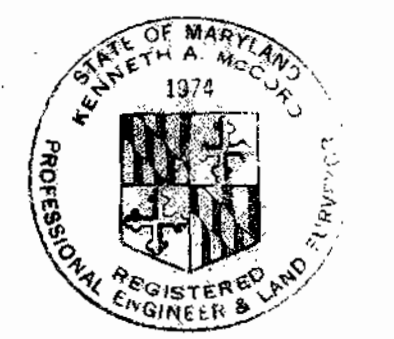
GENERAL NOTES

1. Approximate locations of existing utilities are shown. The Contractor shall take all necessary precautions to protect the existing utilities and to maintain uninterrupted service. Any Damage incurred due to Contractor's operations shall be repaired immediately at the Contractor's expense.
2. The Contractor shall test pit existing utilities, where directed by the Engineer a minimum of two weeks in advance of construction operations.
3. Clear all poles and guy wire anchors by 2'-0" minimum.
4. All pipe elevations shown are invert elevations.
5. For Details not shown on the Contract Drawings, see Standard Details bound in the Specifications.
6. Build all manholes 1'-6" above existing ground except where top elevations are given on Plan & Profile. Provide 2' berm fill around these manhole tops. See detail, sheet 4.
7. All manholes shall be 4'-0" inside diameter except where otherwise noted.
8. The Contractor shall provide a pipe joint in each sewer main within 2'-0" of the exterior of manhole walls.
9. Trees are to be protected from damage to the maximum extent reasonable. Trees which are to remain will be marked by the Engineer prior to commencing of construction operations.
10. Grading around manholes 1533, 1535, 1536, 1538 and 1540 shall be done in accordance with detail, sheet 4.



NOTE:
The Contractor shall notify the Baltimore Gas & Electric Company 72 hours in advance of excavation in the vicinity of gas mains by calling:
Baltimore Gas & Electric Company, Baltimore, Maryland
539-8000 Ext - 691

Property of HOWARD RESEARCH AND DEVELOPMENT CORPORATION



Kenneth J. Malin
Wilde Lake Interceptor
Contract No. 126-S

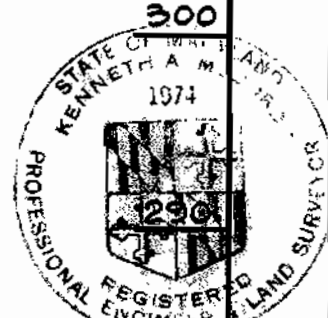
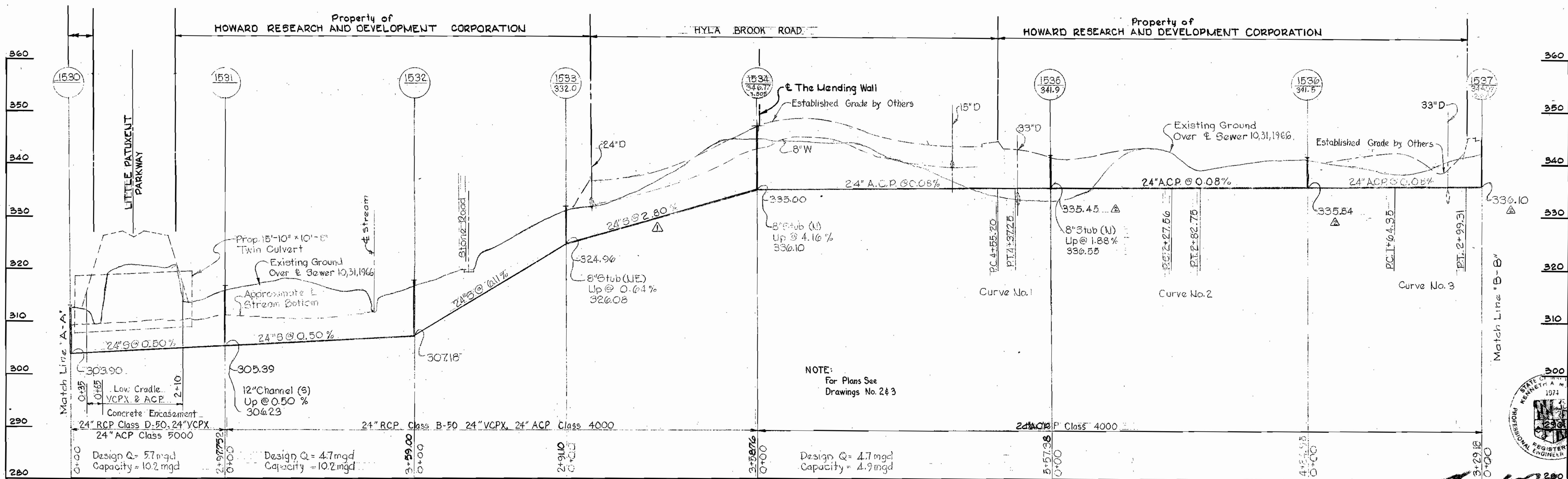
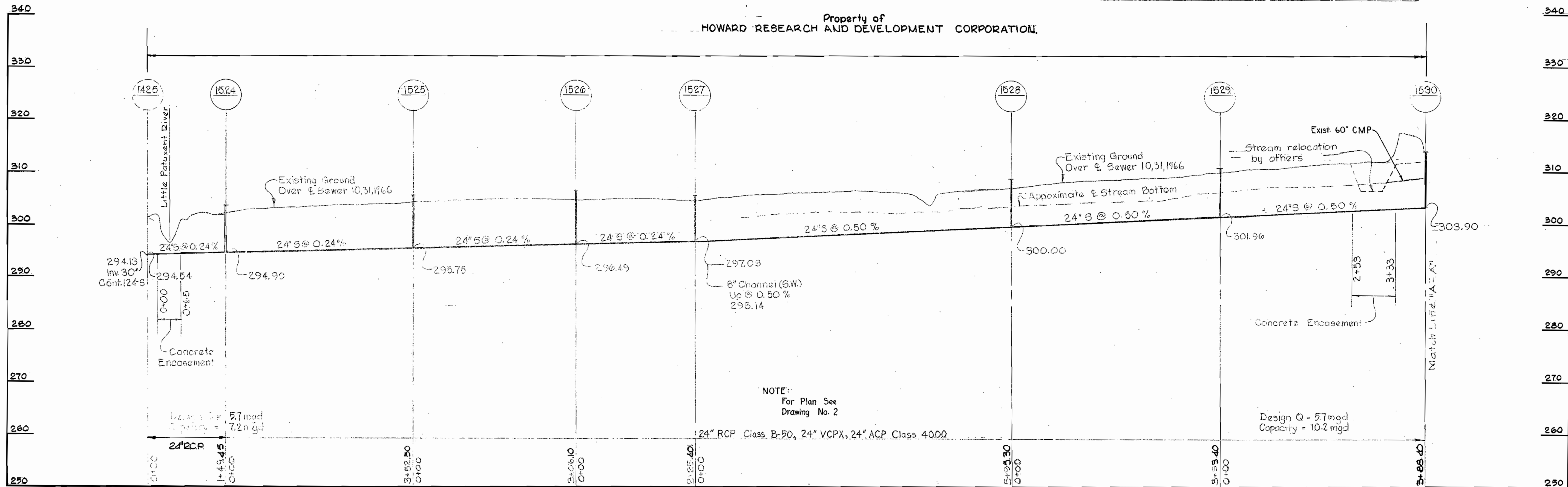
WHITMAN, REQUARDT & ASSOCIATES ENGINEERS 1304 ST. PAUL ST. BALTIMORE, MARYLAND	HOWARD COUNTY METROPOLITAN COMMISSION 12-16-66 DATE <i>W. O. Labadie</i> CHIEF ENGINEER	CONTRACT NO. 126-S	PLAN OF SEWER MAINS	COLUMBIA VILLAGE OF WILDE LAKE ELECTION DISTRICT-CLARKSVILLE No.5	DRAWING NO. 5 OF 7 SCALE 1" = 50'
--	--	---------------------------	----------------------------	--	--

W. O. 5651

AS BUILT Nov. 29, 1967 FB 3726

WS 126-5/5

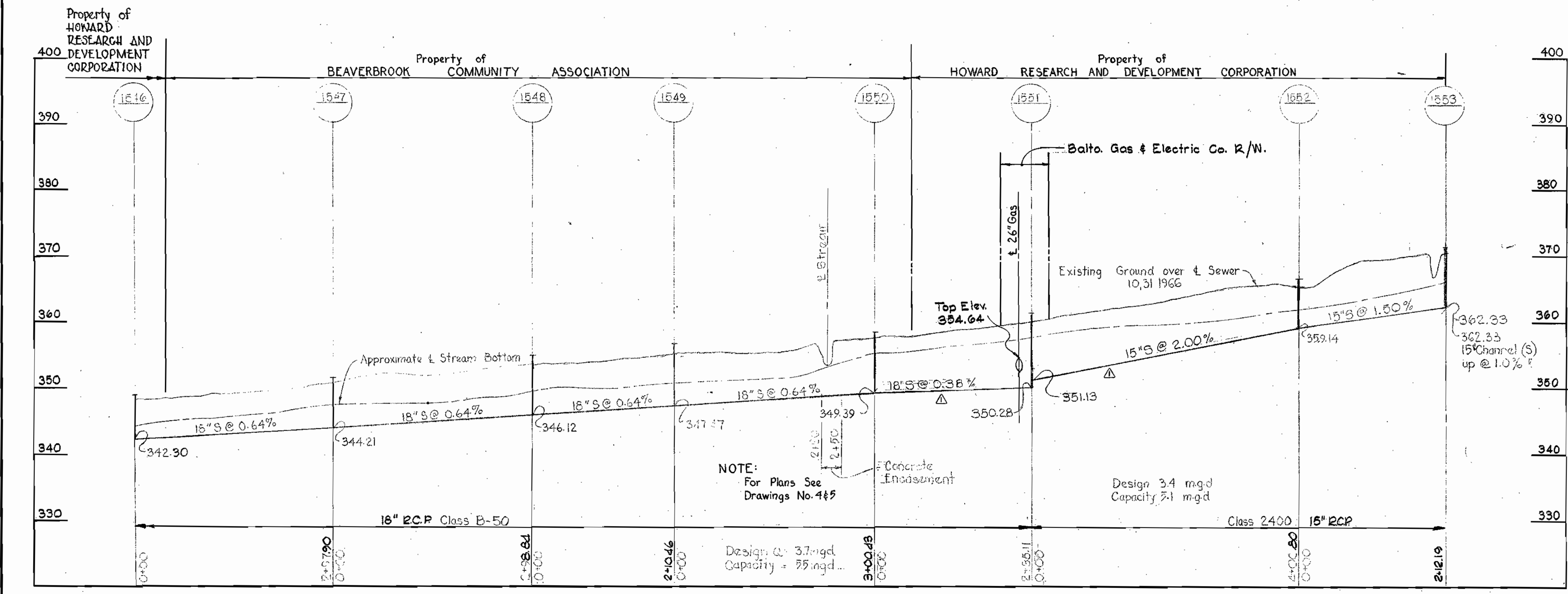
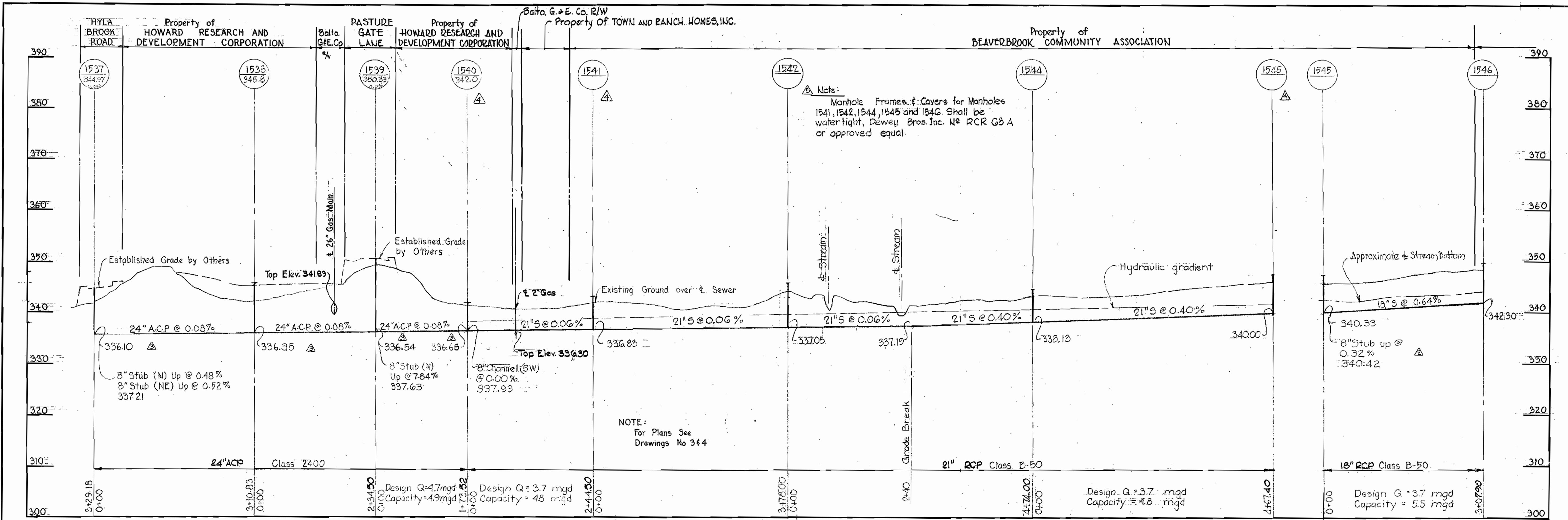
No.	Date	Revision
1	1-25-67	Correct Grades between MH#1533 & MH#1534
2	2-3-67	Adjust inverts for MH's # 1535 to 1537.



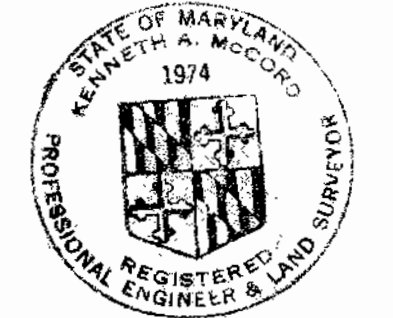
WHITMAN, REQUARDT & ASSOCIATES ENGINEERS 1304 ST. PAUL ST. BALTIMORE, MARYLAND	HOWARD COUNTY METROPOLITAN COMMISSION DATE 12-16-66 <i>W O Libbert</i> CHIEF ENGINEER	CONTRACT NO. 126-S	PROFILE OF SEWER MAINS	COLUMBIA VILLAGE OF WILDE LAKE ELECTION DISTRICT-CLARKSVILLE No.5	DRAWING NO. 6	SCALE H-1"=100'
					OF 7	V-1"=10'

W. O. 5651 AS BUILT Nov. 20, 1969

WS 126-5/6



No.	Date	Revision
1	2-27-67	Added watertight Manhole frames and covers
2	3-19-67	Revise Sewer between MH#1540 and MH#1545
3	2-3-67	Adjust inverts from MH#1537 to MH#1540
4	1-25-67	Add stub to MH#1545 and correct stub grade and invert @ MH#1539.
5	1-23-67	Revise grades between MH#1550 and MH#1552, and pipe size between MH#1550 and MH#1551.



Kenneth A. McCord

WHITMAN, REQUARDT & ASSOCIATES ENGINEERS 1304 ST. PAUL ST. BALTIMORE, MARYLAND	HOWARD COUNTY METROPOLITAN COMMISSION DATE <u>12-16-66</u> <i>W O Libbert</i> CHIEF ENGINEER	CONTRACT NO. <u>126-S</u>	PROFILE OF SEWER MAINS	COLUMBIA VILLAGE OF WILDE LAKE ELECTION DISTRICT-CLARKSVILLE No.5	Contract No.126-5
					DRAWING NO. <u>7</u> OF <u>7</u>

WS 126-S/7