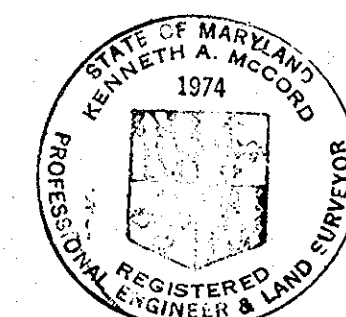


**CONTRACT 124-S**  
**LITTLE PATUXENT RIVER INTERCEPTOR**  
**RED HILL BRANCH INTERCEPTOR**  
**HOWARD COUNTY METROPOLITAN COMMISSION**  
**ELLICOTT CITY, MARYLAND**



*Kenneth A. McCord*

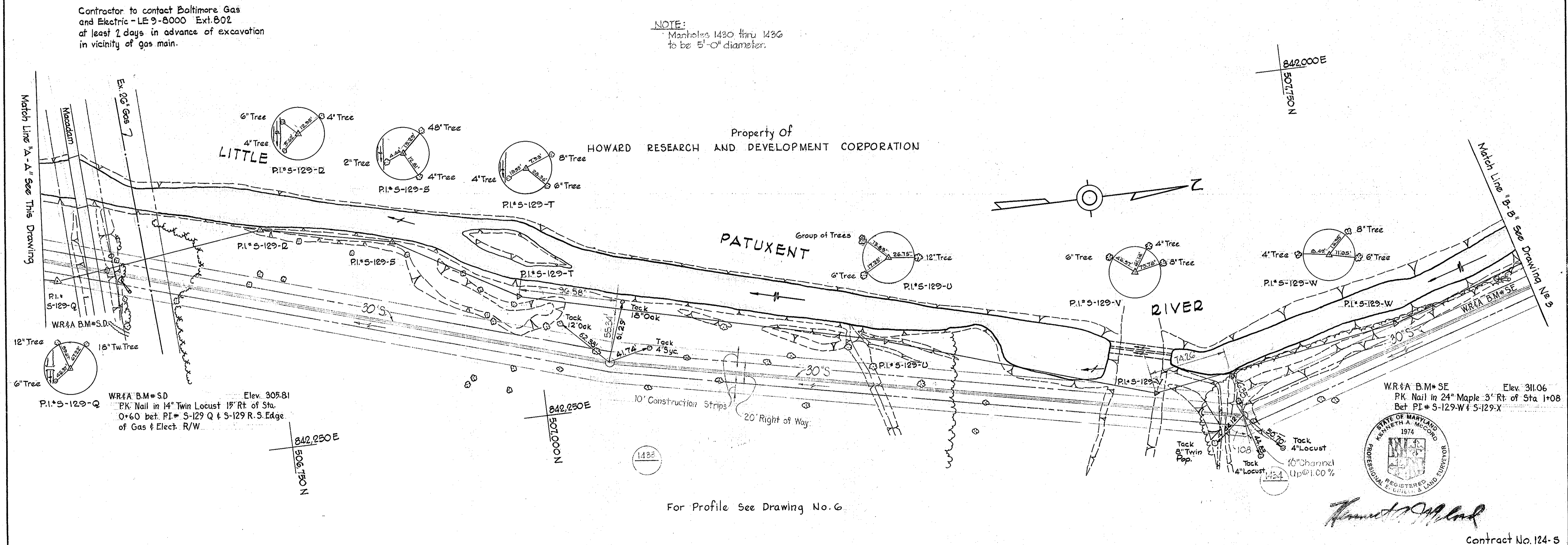
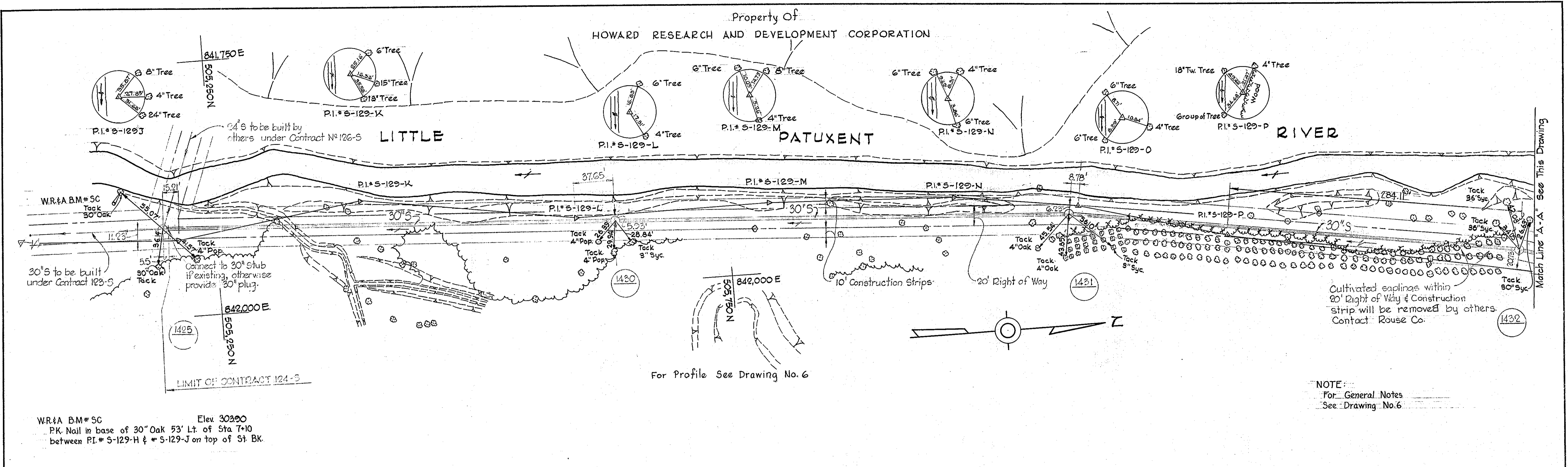
CONTRACT NO. 124-S

WHITMAN, REQUARDT & ASSOCIATES ENGINEERS 1304 ST. PAUL ST. BALTIMORE, MARYLAND	HOWARD COUNTY METROPOLITAN COMMISSION 11-15-66 <i>W. O. L. West</i> <small>DATE</small> <small>CHIEF ENGINEER</small>	CONTRACT NO. 124-S	LOCATION MAP	LITTLE PATUXENT RIVER INTERCEPTOR - SECTION NO. 7 RED HILL BRANCH INTERCEPTOR - SECTION NO. 1	DRAWING NO. 1 OF 8	SCALE AS SHOWN
---	---	--------------------	--------------	--	--------------------	----------------

W. O. 5651

JAN. 26, 1970 AS BUILT

S 124-S/1



WHITMAN, REQUARDT & ASSOCIATES ENGINEERS 1304 ST. PAUL ST. BALTIMORE, MARYLAND	HOWARD COUNTY METROPOLITAN COMMISSION 11-15-66 <i>W.O. Lippert</i> CHIEF ENGINEER	CONTRACT NO. 124-S	PLAN OF SEWER MAINS	LITTLE PATUXENT RIVER INTERCEPTOR - SECTION NO. 7 RED HILL BRANCH INTERCEPTOR - SECTION NO. 1	DRAWING NO. 2 OF 8 SCALE 1"=50' 501-482 502-483 503-484
---	--	--------------------	------------------------	--	---

WS 124-S/2



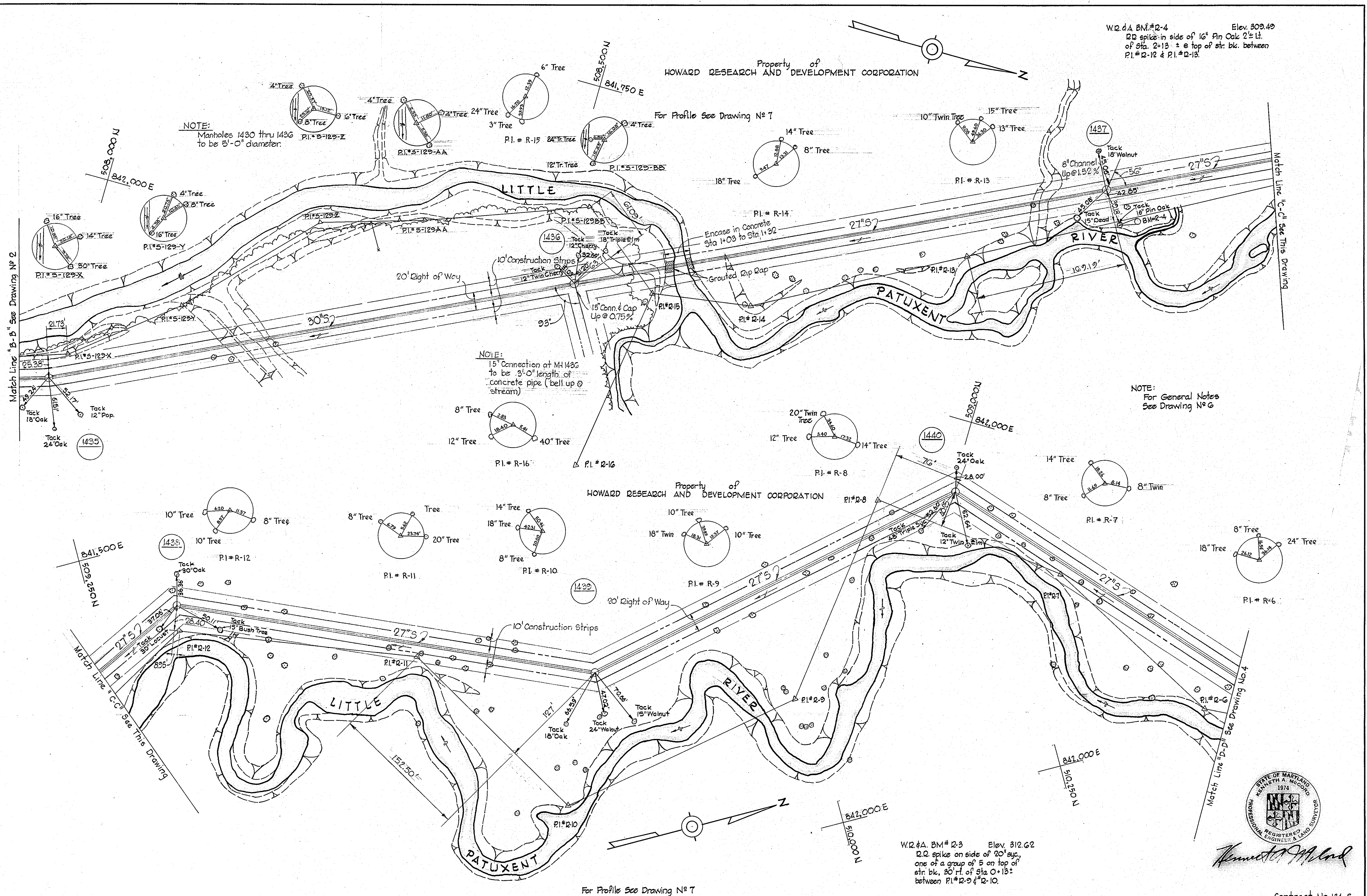
W.D. & A. BM # 2-4 Elev. 309.49  
 D.D. spike in side of 16" Pin Oak 2 1/2 ft.  
 of Sta. 2+13 ± e top of str. blk. between  
 P.I. # 2-12 & P.I. # 2-13.

Property of  
 HOWARD RESEARCH AND DEVELOPMENT CORPORATION

For Profile See Drawing No 7

Property of  
 HOWARD RESEARCH AND DEVELOPMENT CORPORATION

For Profile See Drawing No 7

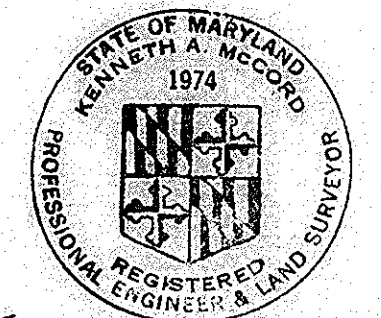


NOTE:  
 Manholes 1430 thru 1436  
 to be 5'-0" diameter.

NOTE:  
 15" Connection at MH 1436  
 to be 3'-0" length of  
 concrete pipe (bell up @  
 stream)

NOTE:  
 For General Notes  
 See Drawing No 6

W.D. & A. BM # 2-3 Elev. 312.62  
 D.D. spike on side of 20" syc.  
 one of a group of 5 on top of  
 str. blk. 20' ft. of Sta. 0+13 ±  
 between P.I. # 2-9 & 2-10.



*Kenneth A. McLeod*

Contract No. 124-S

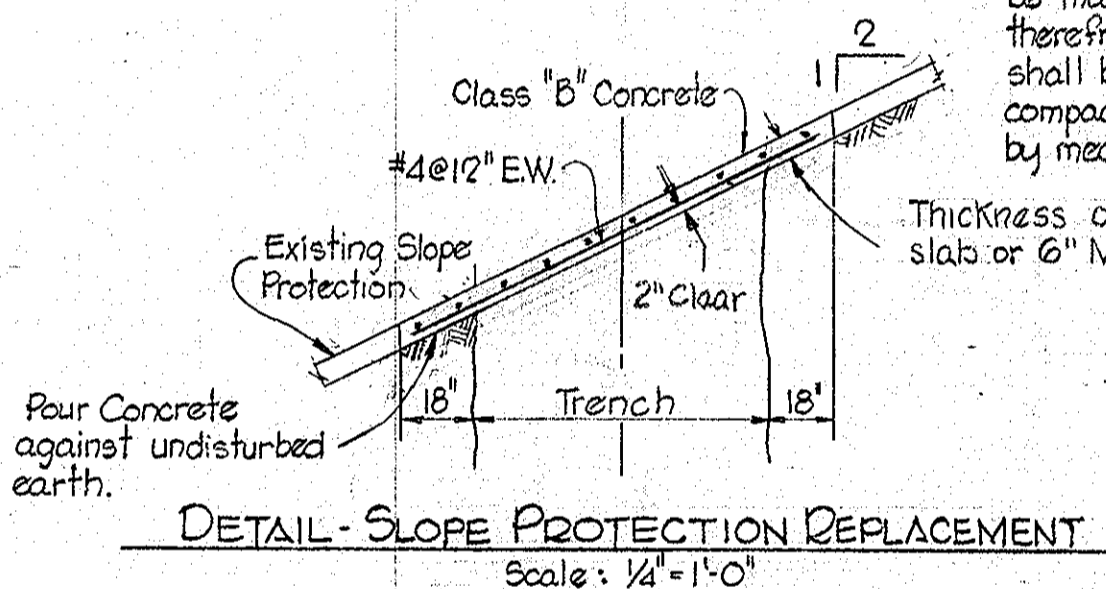
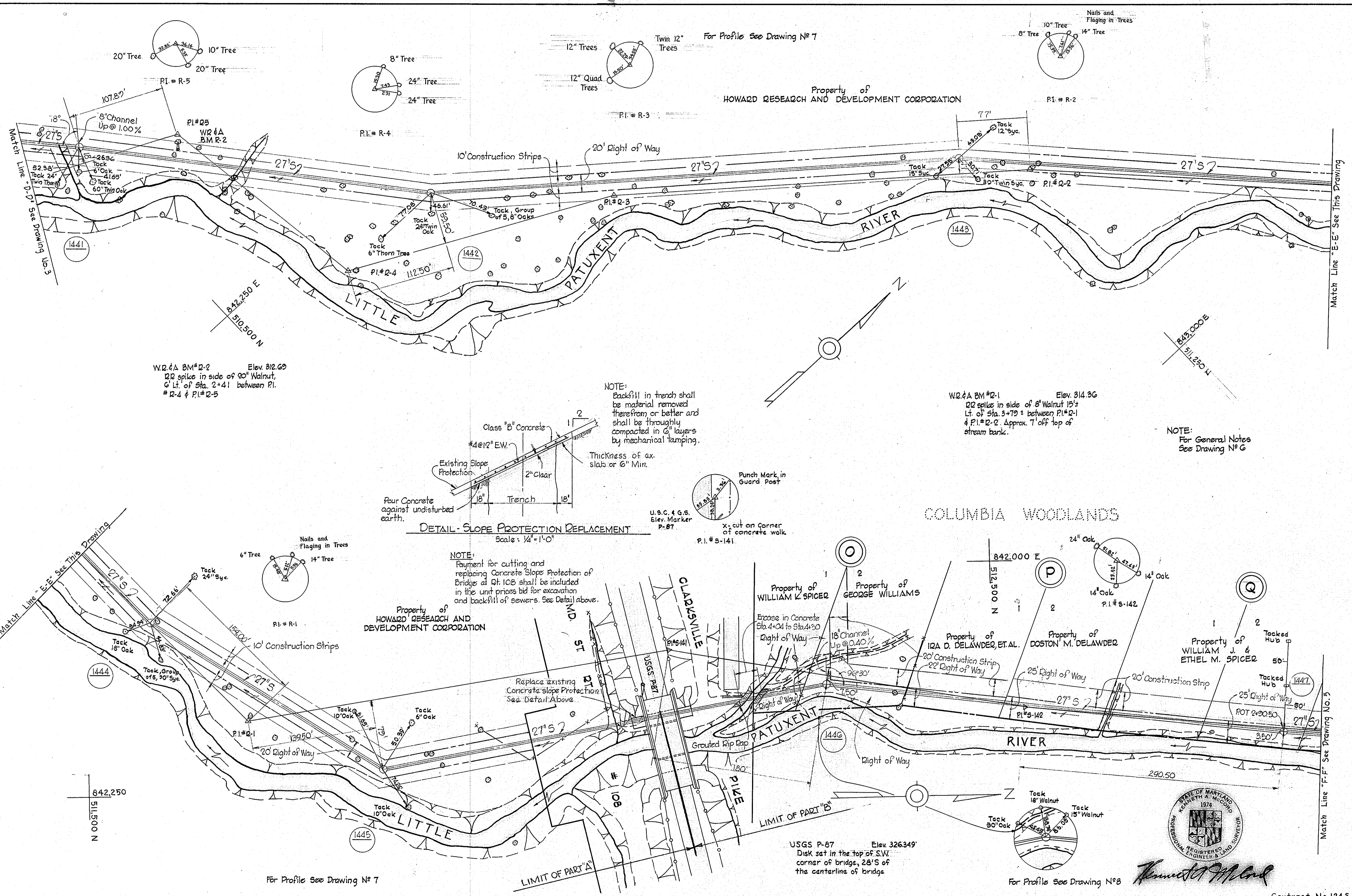
WHITMAN, REQUARDT & ASSOCIATES ENGINEERS 1304 ST. PAUL ST. BALTIMORE, MARYLAND	HOWARD COUNTY METROPOLITAN COMMISSION DATE 11-14-66 W.O. Gilbert CHIEF ENGINEER	CONTRACT NO. 124-S	PLAN OF SEWER MAINS	LITTLE PATUXENT RIVER INTERCEPTOR-SECTION NO.7 RED HILL BRANCH INTERCEPTOR -SECTION NO.1	DRAWING NO. 3 OF 8 SCALE 1" = 50' 510-482 510-481 509-482 509-481
---	--	--------------------	------------------------	---	--

W. O. 5651

JAN, 26, 1970 AS BUILT

WS 124-S/3





WHITMAN, REQUARDT & ASSOCIATES  
ENGINEERS  
1304 ST. PAUL ST.  
BALTIMORE, MARYLAND

HOWARD COUNTY METROPOLITAN COMMISSION  
DATE 11.14.66  
W O Gilbert  
CHIEF ENGINEER

CONTRACT NO. 124-S

PLAN OF SEWER MAINS

LITTLE PATUXENT RIVER INTERCEPTOR-SECTION NO.7  
RED HILL BRANCH INTERCEPTOR-SECTION NO.1

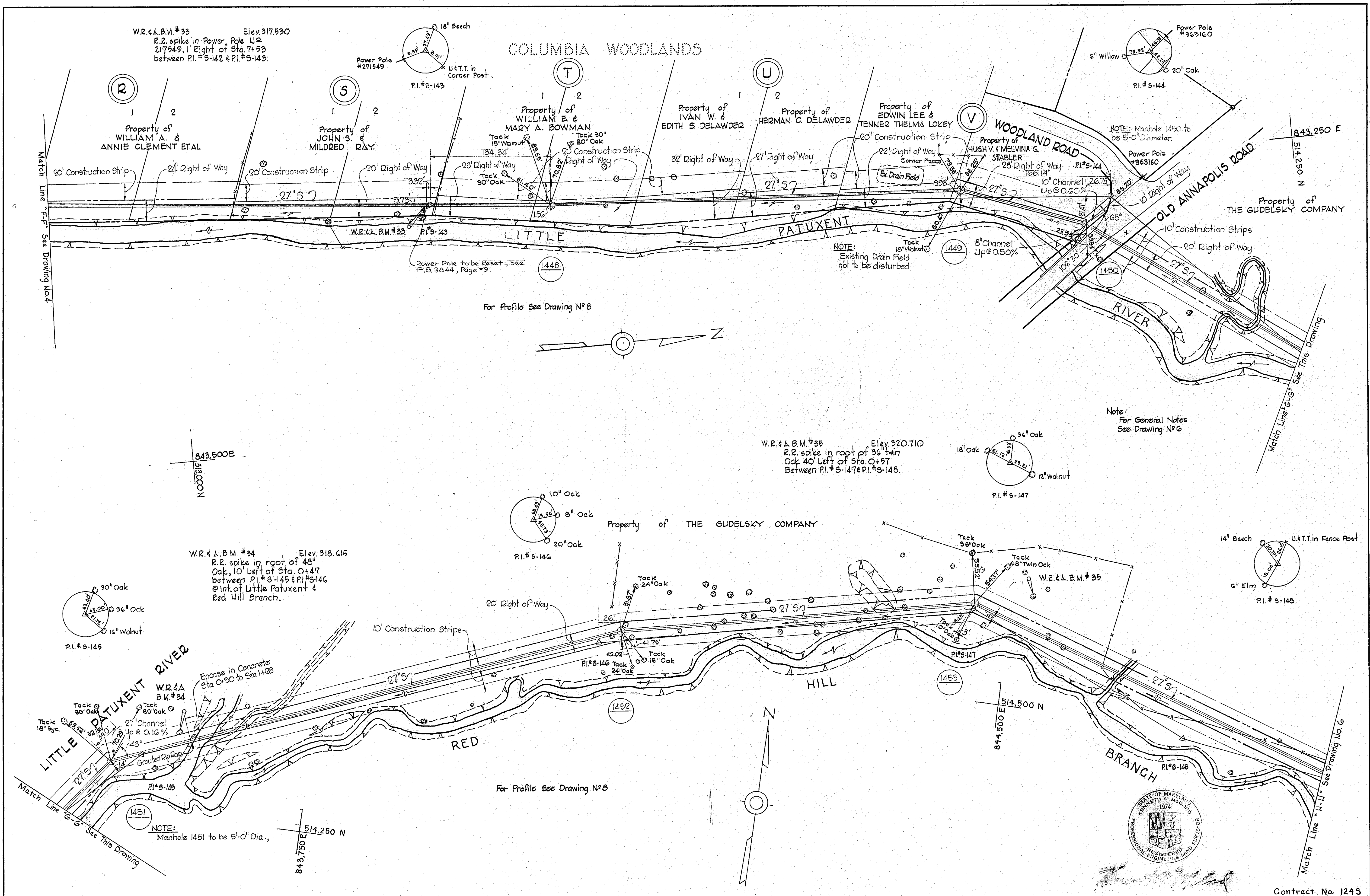
DRAWING NO. 4 OF 8  
SCALE 1" = 50'

W. O. 5651

AS BUILT JAN. 26, 1970

WS 124-S/4





WHITMAN, REQUARDT & ASSOCIATES  
 ENGINEERS  
 1304 ST. PAUL ST.  
 BALTIMORE, MARYLAND

HOWARD COUNTY METROPOLITAN COMMISSION  
 DATE 11-14-66  
 W.O. Libout  
 CHIEF ENGINEER

CONTRACT NO. 124-S

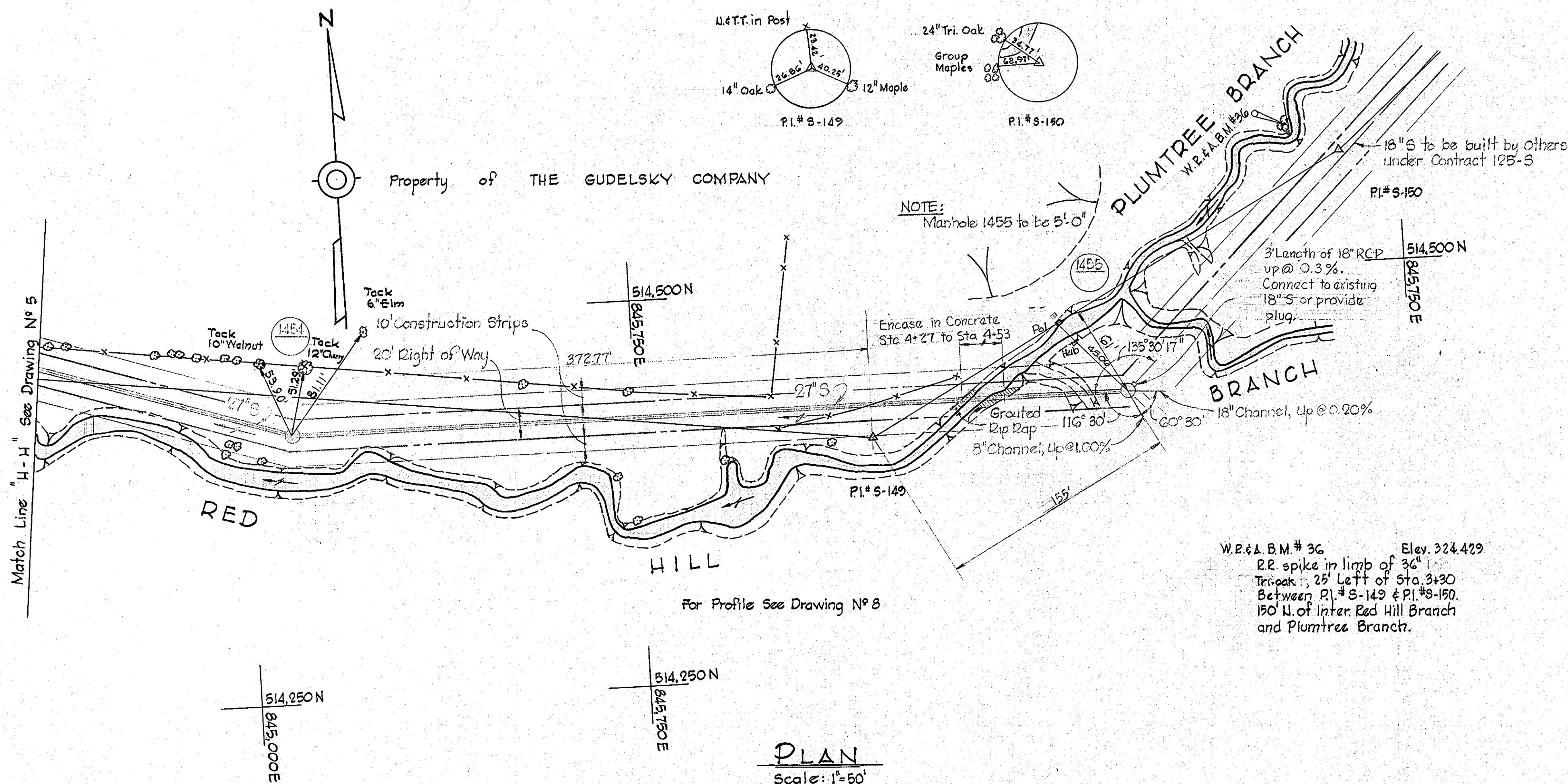
PLAN OF  
 SEWER MAINS

LITTLE PATUXENT RIVER INTERCEPTOR - SECTION NO. 7  
 RED HILL BRANCH INTERCEPTOR - SECTION NO. 1

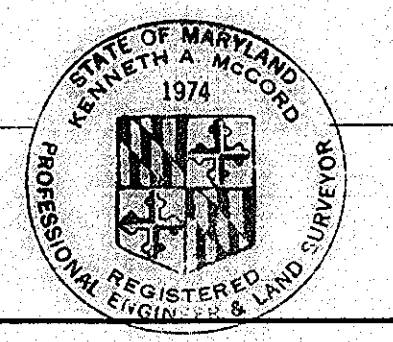
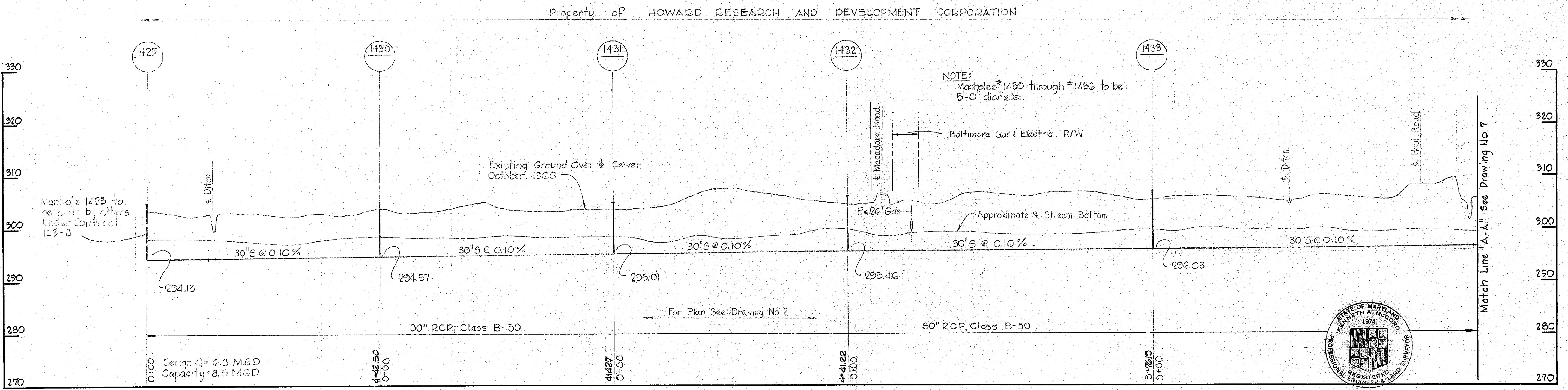
CONTRACT NO. 124S  
 DRAWING NO. 5 OF 8  
 SCALE 1" = 50'

WS 124-S/5





- ### GENERAL NOTES
1. Approximate locations of existing utilities are shown. The Contractor shall take all necessary precautions to protect the existing utilities and services and maintain uninterrupted service. Any damage incurred due to Contractor's operations shall be repaired immediately at the Contractor's expense.
  2. All pipe elevations shown are invert elevations.
  3. The Contractor shall test all existing utilities a minimum of two weeks in advance of construction operations in the vicinity of utilities.
  4. For all details not shown, see Standard Details bound in specifications.
  5. Build all manholes to 1'-6" above existing ground, unless otherwise noted.
  6. Clear all poles by 2'-0" minimum.
  7. Coordinate values shown are in the Maryland State Grid system.
  8. The Contractor shall provide a joint in each sewer main within 2'-0" of the exterior of manhole walls.
  9. Concrete pipe shall be class B-50. If asbestos cement pipe is employed it shall be class 3300.
  10. All manholes shall be 4'-0" diameter except where noted otherwise.



*Kenneth A. McGee*

Contract No. 124-S

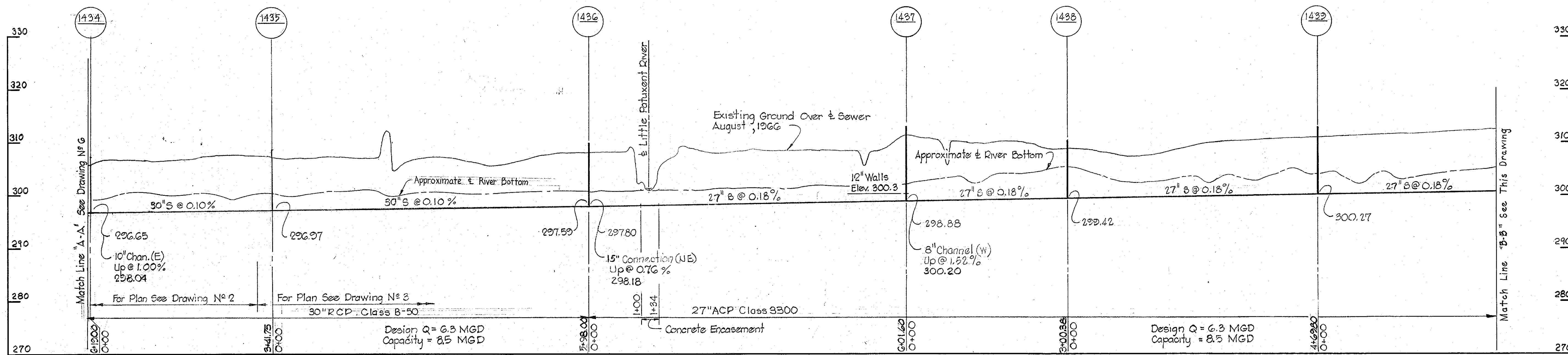
<b>WHITMAN, REQUARDT &amp; ASSOCIATES</b> ENGINEERS 1304 ST. PAUL ST. BALTIMORE, MARYLAND	<b>HOWARD COUNTY METROPOLITAN COMMISSION</b> <i>W. O. Gilbert</i> DATE: 11-15-66 CHIEF ENGINEER	<b>CONTRACT NO. 124-S</b>	<b>PLAN AND PROFILE OF SEWER MAINS</b>	<b>LITTLE PATUXENT RIVER INTERCEPTOR - SECTION NO. 7</b> <b>RED HILL BRANCH INTERCEPTOR - SECTION NO. 1</b>	<b>DRAWING NO. 6 OF 8</b> <b>SCALE AS SHOWN</b>
--	---	---------------------------	--	--	--

W. O. 5651

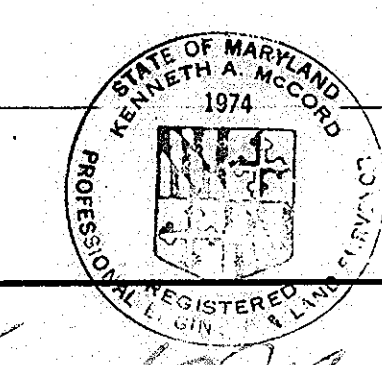
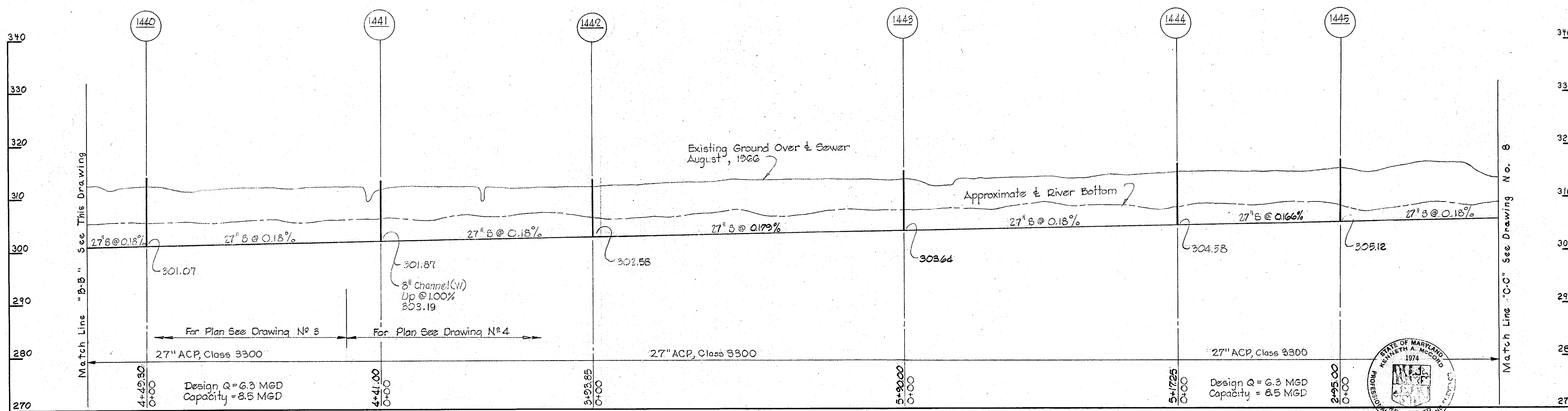
JAN. 26, 1970 AS BUILT

WS 124-S/6

Property of HOWARD RESEARCH AND DEVELOPMENT CORPORATION



Property of HOWARD RESEARCH AND DEVELOPMENT CORPORATION



*Kenneth A. McCord*

Contract No. 124-S

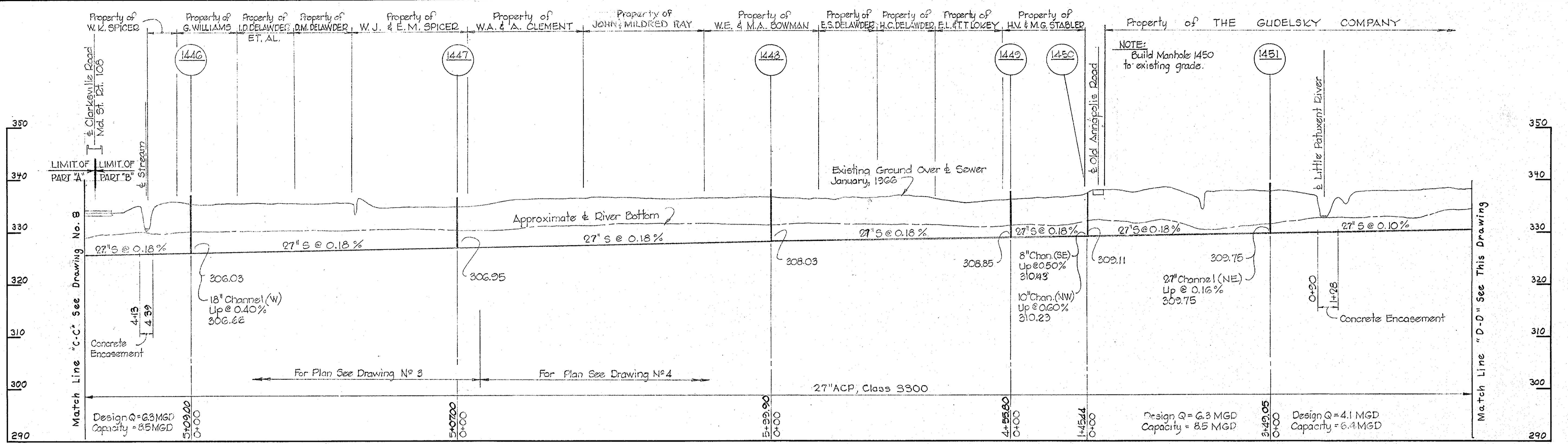
WHITMAN, REQUARDT & ASSOCIATES ENGINEERS 1304 ST. PAUL ST. BALTIMORE, MARYLAND	HOWARD COUNTY METROPOLITAN COMMISSION DATE <u>1/15/66</u> <i>W. C. Elliott</i> CHIEF ENGINEER	CONTRACT NO. <u>124-S</u>	PROFILE OF SEWER MAINS	LITTLE PATUXENT RIVER INTERCEPTOR - SECTION NO. 7 RED HILL BRANCH INTERCEPTOR - SECTION NO. 1	DRAWING NO. <u>7</u> OF <u>8</u> SCALE H-1"=100' V-1"=10'
---	--	---------------------------	---------------------------	--	---

W. O. 5651

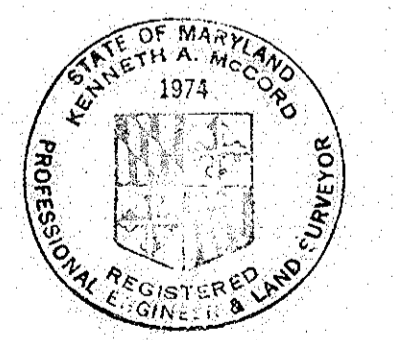
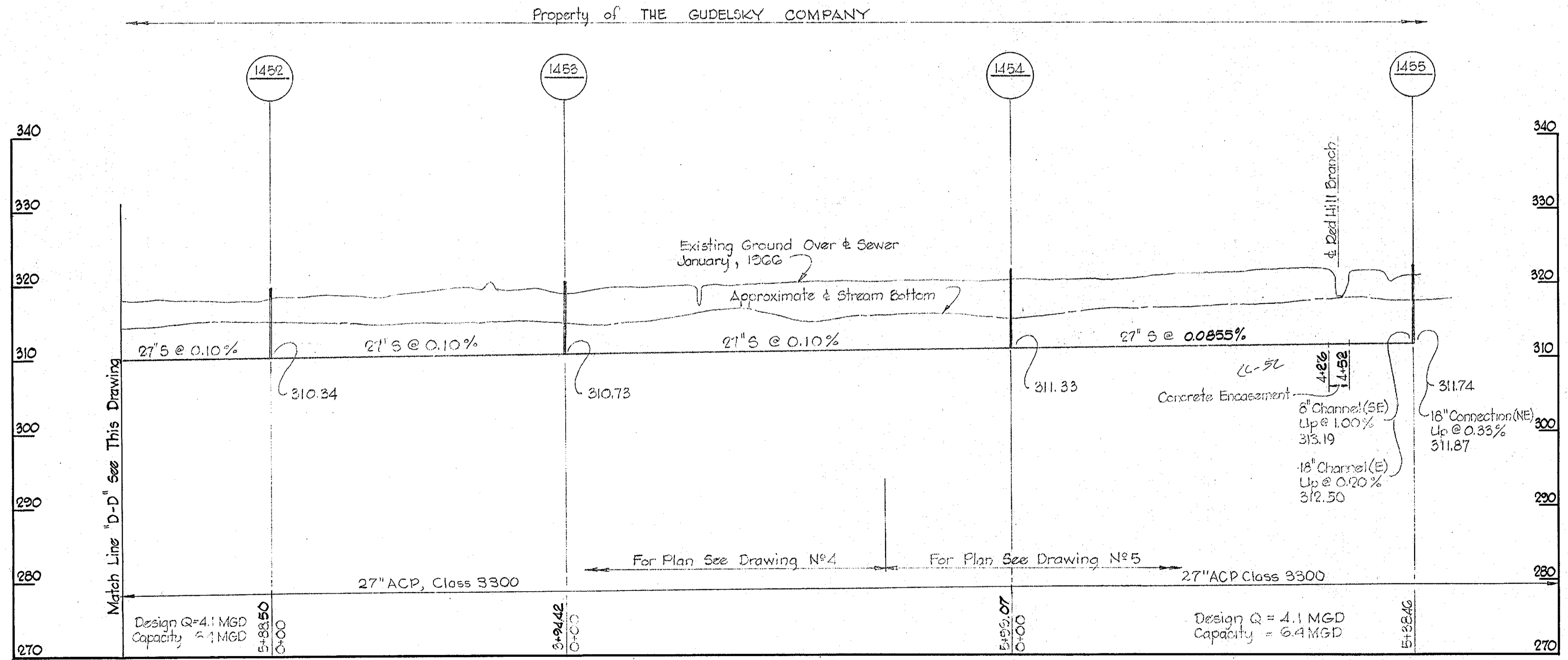
JAN 26, 1970 AS BUILT

WS 124-S/7





**PROFILE**  
 Scale: Hor. 1"=100'  
 Vert. 1"=10'



*Kenneth A. McCord*

Contract No. 124-S

WHITMAN, REQUARDT & ASSOCIATES ENGINEERS 1304 ST. PAUL ST. BALTIMORE, MARYLAND	HOWARD COUNTY METROPOLITAN COMMISSION DATE 11-15-66 <i>W.O. Libby</i> CHIEF ENGINEER	CONTRACT NO. 124-S	PROFILE OF SEWER MAINS	LITTLE PATUXENT RIVER INTERCEPTOR-SECTION NO.7 RED HILL BRANCH INTERCEPTOR-SECTION NO.1	DRAWING NO. 8 OF 8	SCALE AS SHOWN
---	---	--------------------	------------------------	--	--------------------	----------------

W. O. 5651

Jan. 26, 1970 AS BUILT

WS 124-S/8