

WHITMAN, REQUARDT & ASSOCIATES
ENGINEERS
1304 ST. PAUL ST.
BALTIMORE, MARYLAND

HOWARD COUNTY METROPOLITAN COMMISSION
DATE 12/22-66
CHIEF ENGINEER

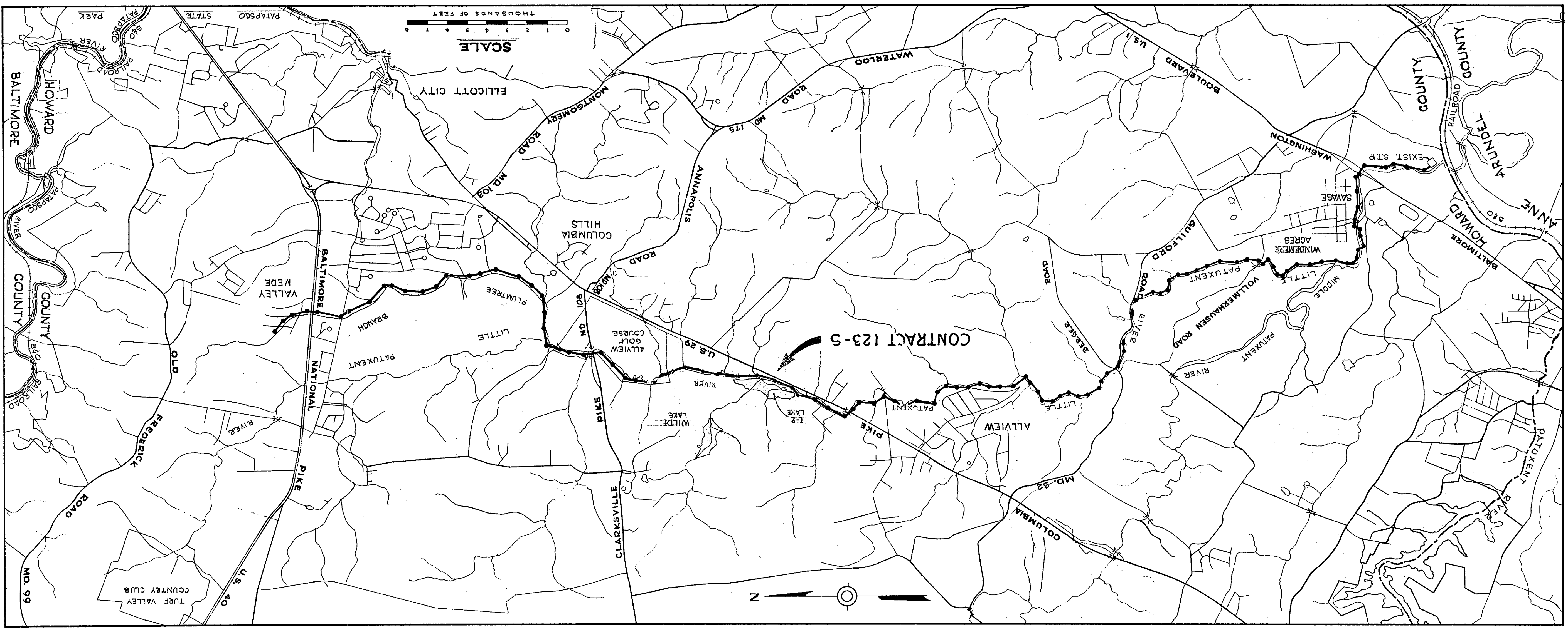
CONTRACT NO. 123-S
LOCATION MAP

LITTLE PATUXENT RIVER INTERCEPTOR
SECTION NO. 6

DRAWING NO. 1
SCALE AS SHOWN
OF 3

AS BUILT 1-30-67

CONTRACT 123-S LITTLE PATUXENT RIVER INTERCEPTOR HOWARD COUNTY METROPOLITAN COMMISSION ELLICOTT CITY, MARYLAND

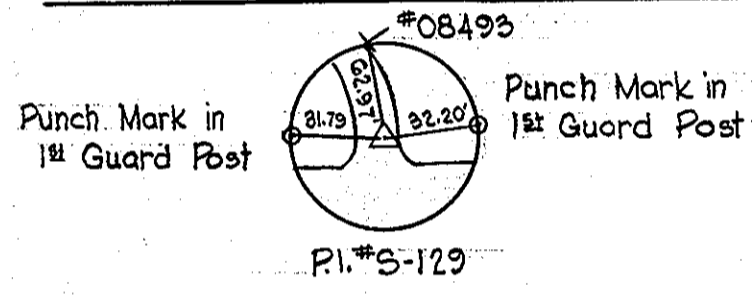
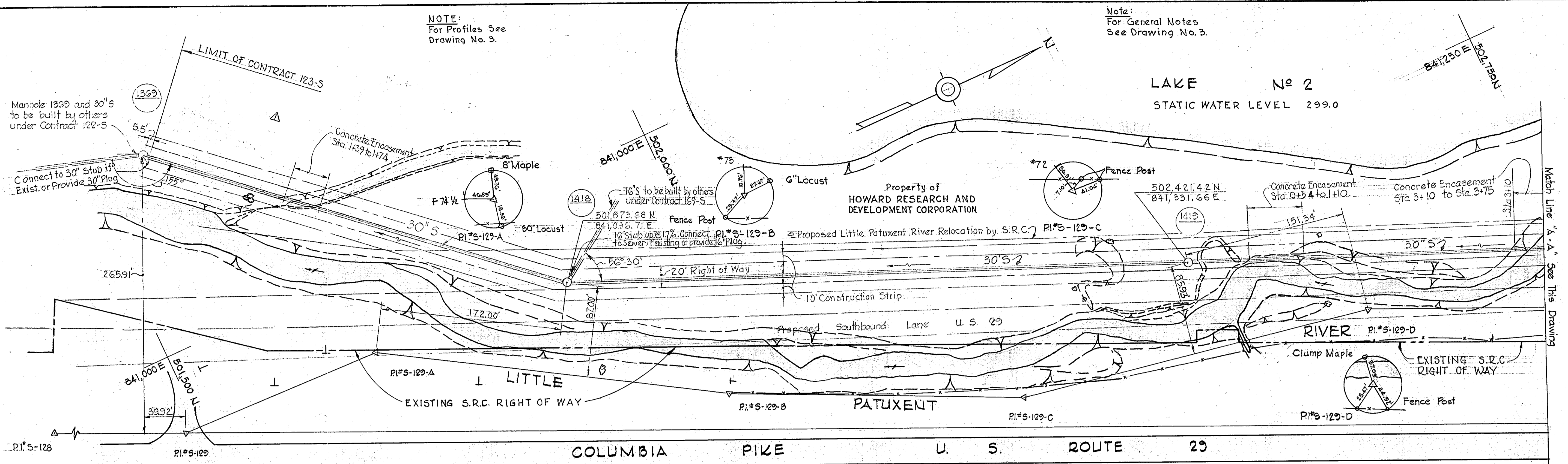


Whitman, Requardt & Associates

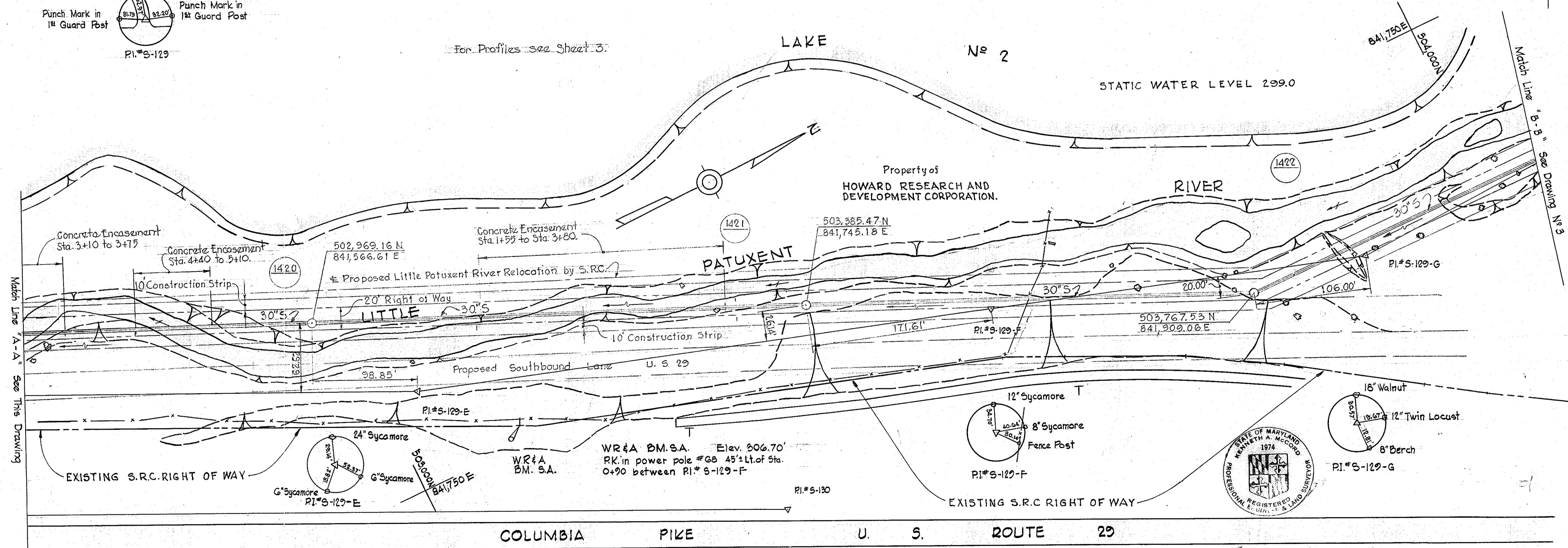
CONTRACT NO. 123-S

NOTE:
For Profiles See
Drawing No. 3.

Note:
For General Notes
See Drawing No. 3.



For Profiles see Sheet 3.



2-22-67	MH #1426 eliminated
No. Data	Revision

Handwritten signature

Contract No 123-S

WHITMAN, REQUARDT & ASSOCIATES
ENGINEERS
1304 ST. PAUL ST.
BALTIMORE, MARYLAND

HOWARD COUNTY METROPOLITAN COMMISSION
12-22-66
DATE
W O Libbert
CHIEF ENGINEER

CONTRACT NO. 123-S

PLAN OF
SEWER MAINS

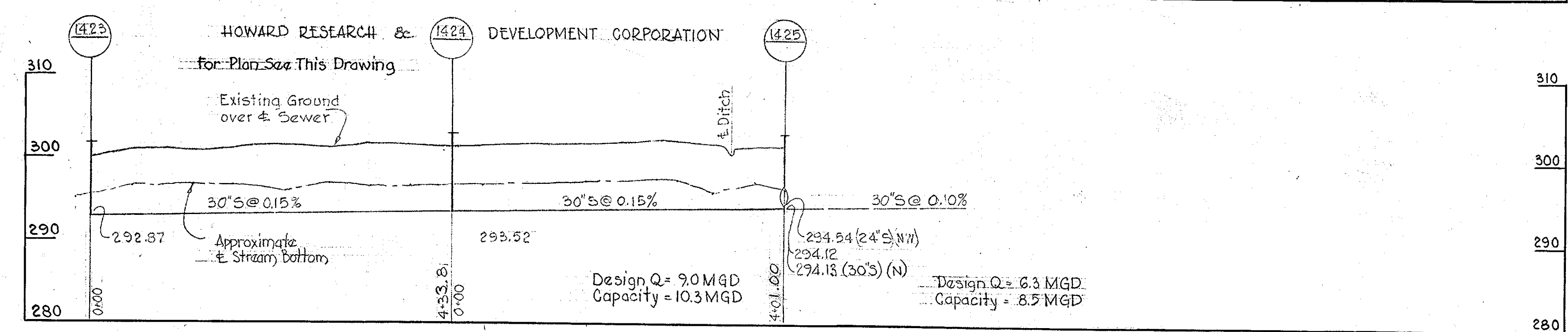
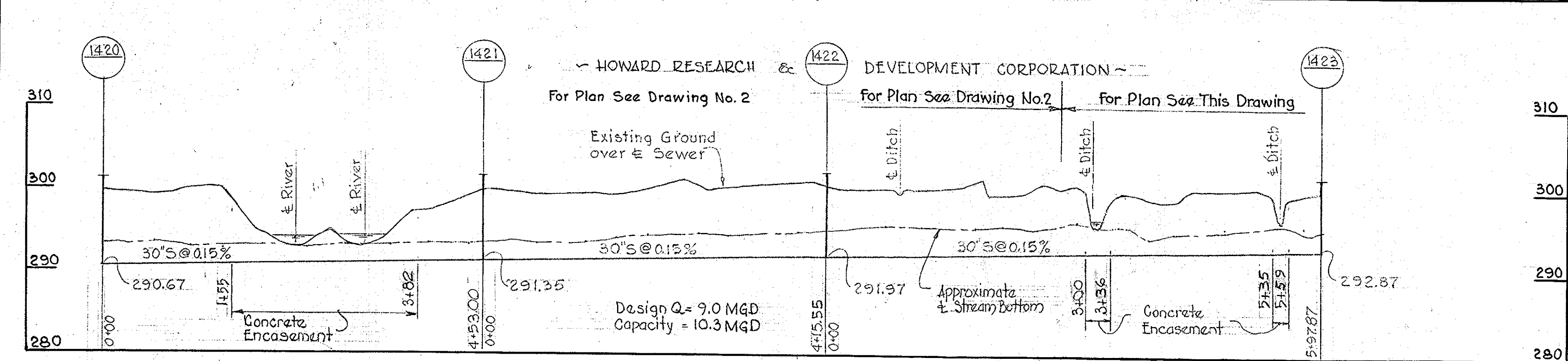
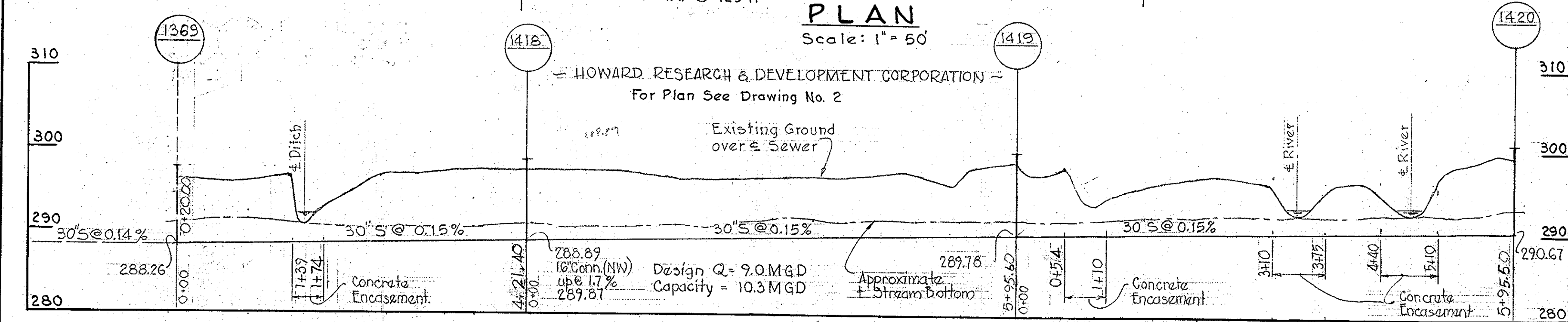
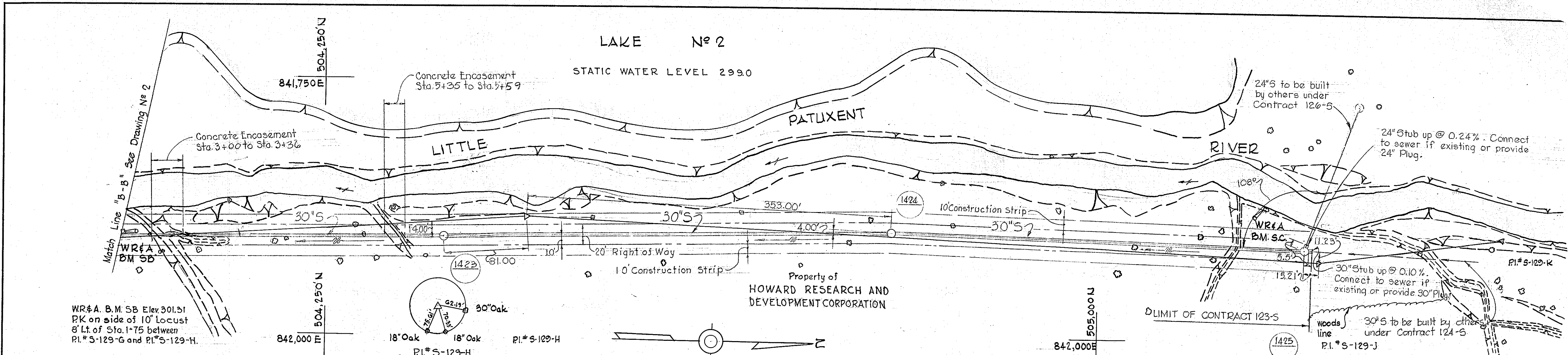
LITTLE PATUXENT RIVER INTERCEPTOR
SECTION NO. 6

DRAWING NO. 2 OF 3	SCALE 1"=50'	501-481 502-481 503-482
--------------------	--------------	-------------------------------

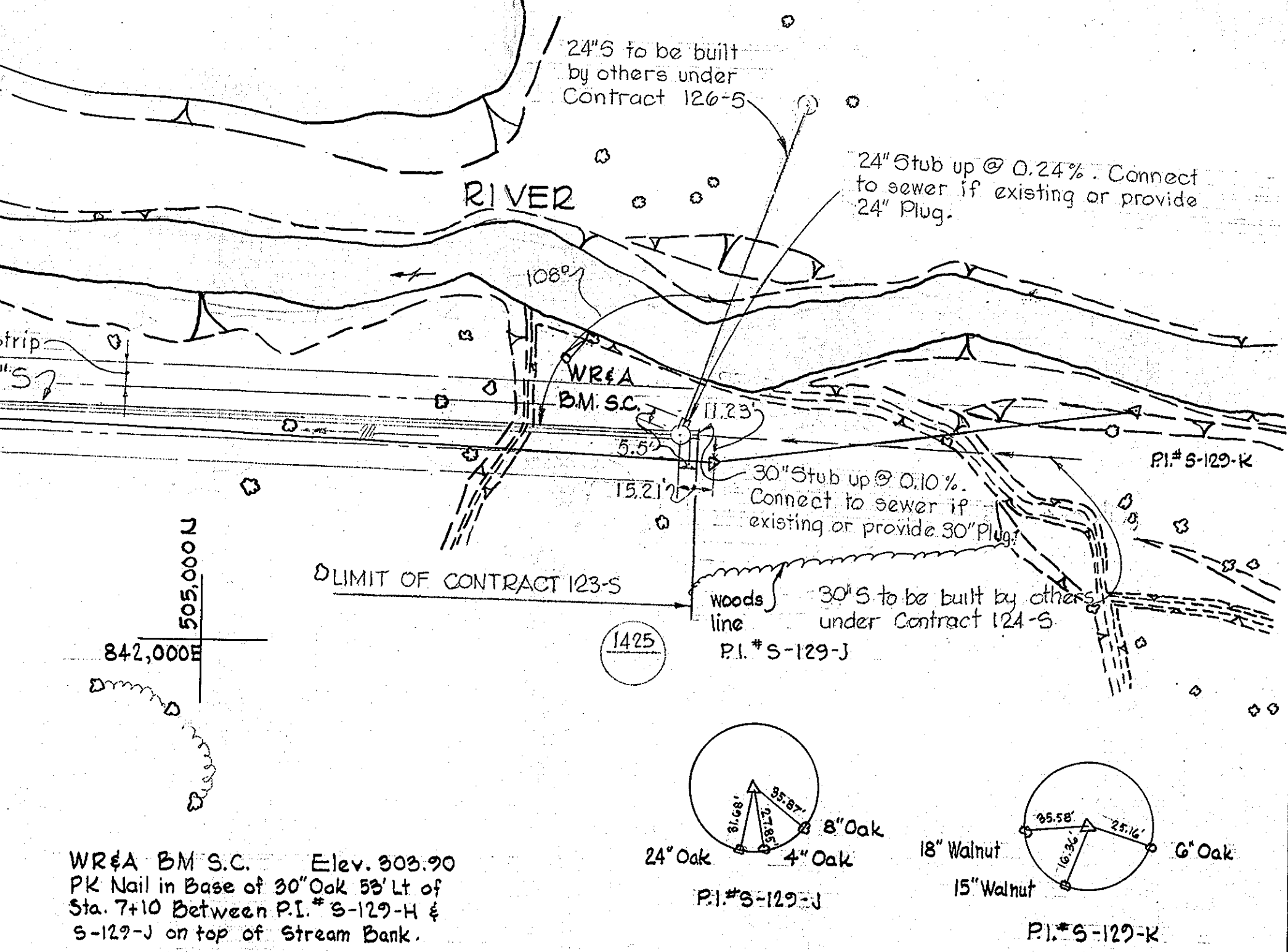
W. O. 5651

AS BUILT 1-30-67
F.B. 3720

2/S-321 SM



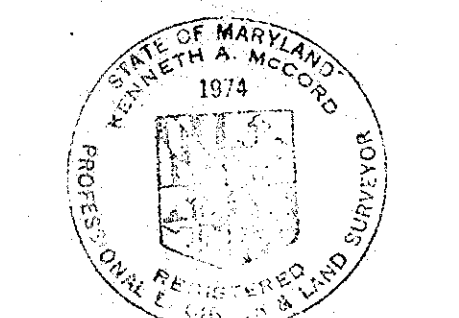
PROFILES
Scale: Hor. 1" = 100'
Ver. 1" = 10'



WR&A B.M. S.C. Elev. 303.90
PK Nail in Base of 30" Oak 55' Lt of
Sta. 7+10 Between P.I. # S-129-H &
S-129-J on top of Stream Bank.

GENERAL NOTES

1. Approximate locations of existing utilities are shown. The Contractor shall take all necessary precautions to protect the existing utilities and to maintain uninterrupted service. Any damage incurred due to Contractor's operations shall be repaired immediately at the Contractor's expense.
2. All pipe elevations shown are invert elevations.
3. The Contractor shall test pit existing utilities where directed by the Engineer a minimum of two weeks in advance of construction operations.
4. For all details not shown, see Standard Details bound in specifications.
5. Build all manholes to 1'-6" above existing ground, unless otherwise noted on plans or profiles. Provide 2' berm fill around manholes. See detail.
6. Clear all poles by 2'-0" minimum.
7. Coordinate values shown are in the Maryland State Grid System.
8. The Contractor shall provide a joint in each sewer main within 2'-0" of the exterior of manhole walls. See details bound in specifications.
9. Concrete pipe shall be class B-50. If asbestos cement pipe is used, it shall be class 5500.
10. All manholes shall be 5'-0" diameter.
11. Trees are to be protected from damage to the maximum extent reasonable. Trees which are not to be cut will be marked by the Engineer prior to commencing of construction operations.



WHITMAN, REQUARDT & ASSOCIATES ENGINEERS 1304 ST. PAUL ST. BALTIMORE, MARYLAND	HOWARD COUNTY METROPOLITAN COMMISSION 12-22-66 DATE <i>W. O. Libbert</i> CHIEF ENGINEER	CONTRACT NO. 123-S	PLAN AND PROFILE OF SEWER MAINS	LITTLE PATUXENT RIVER INTERCEPTOR SECTION NO. 6	DRAWING NO. 3 OF 3	SCALE AS SHOWN	Contract No. 123-S 504-482 505-482
					AS BUILT 1-30-67 FB. 3705		

WS 123-S/3