

**CONTRACT 120 - S**  
**LITTLE PATUXENT RIVER INTERCEPTOR**  
**HOWARD COUNTY METROPOLITAN COMMISSION**  
**ELLICOTT CITY, MARYLAND**



*James M. Reardon*  
CONTRACT NO. 120-S

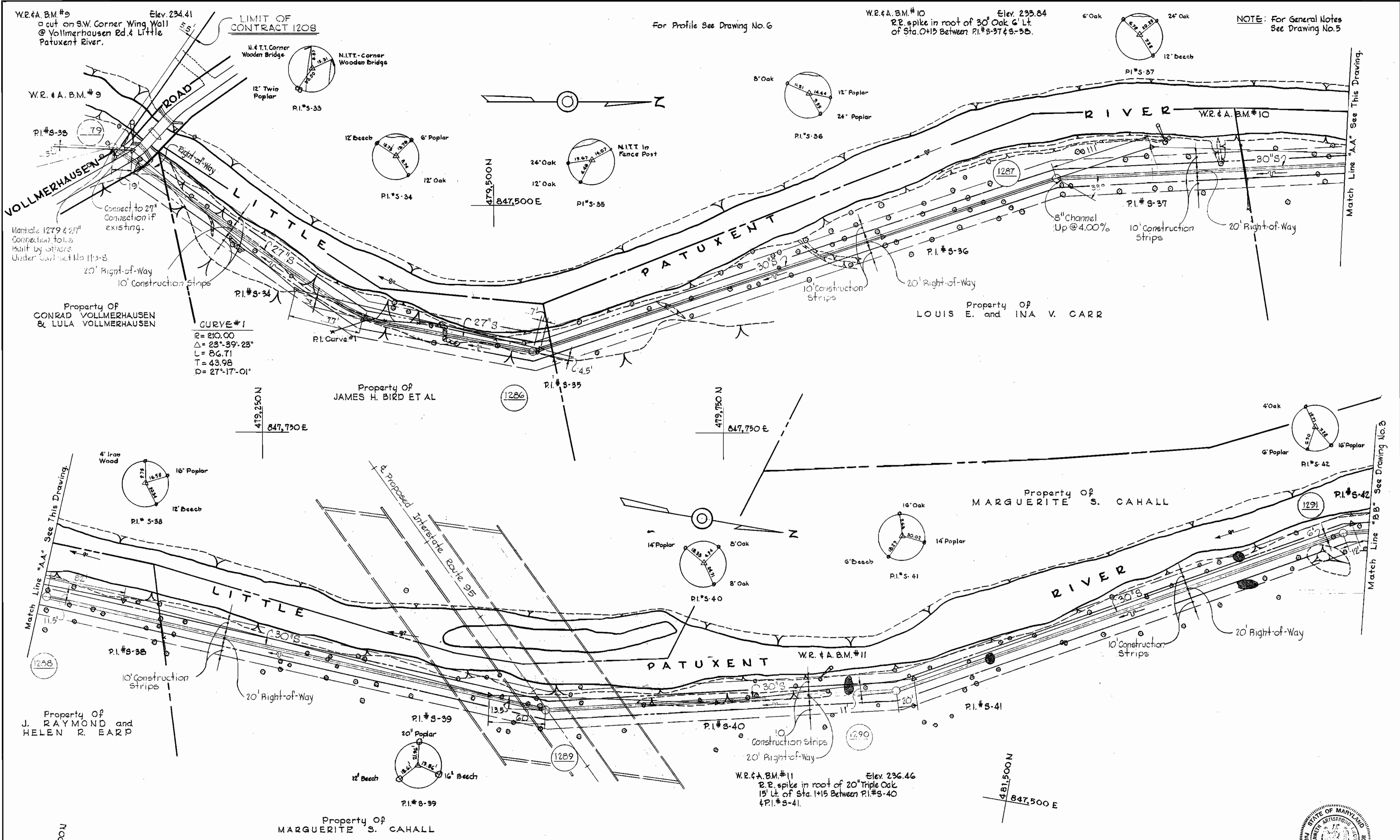
WHITMAN, REQUARDT & ASSOCIATES ENGINEERS 1304 ST. PAUL ST. BALTIMORE, MARYLAND	HOWARD COUNTY METROPOLITAN COMMISSION DATE <u>5-12-66</u> <i>W. O. S. [Signature]</i> <small>CHIEF ENGINEER</small>	CONTRACT NO. <u>120-S</u>	LOCATION MAP	LITTLE PATUXENT RIVER INTERCEPTOR SECTION NO. 3	DRAWING NO. <u>1</u> OF <u>7</u>	SCALE AS SHOWN
---	---	---------------------------	--------------	--	-------------------------------------	----------------

W. O. 5651

AS BUILT 7 AUGUST 1967

1/5-021 SM

WS 120 S/2



NOTE: For General Notes See Drawing No. 5

For Profile See Drawing No. 6

For Profile See Drawing No. 6

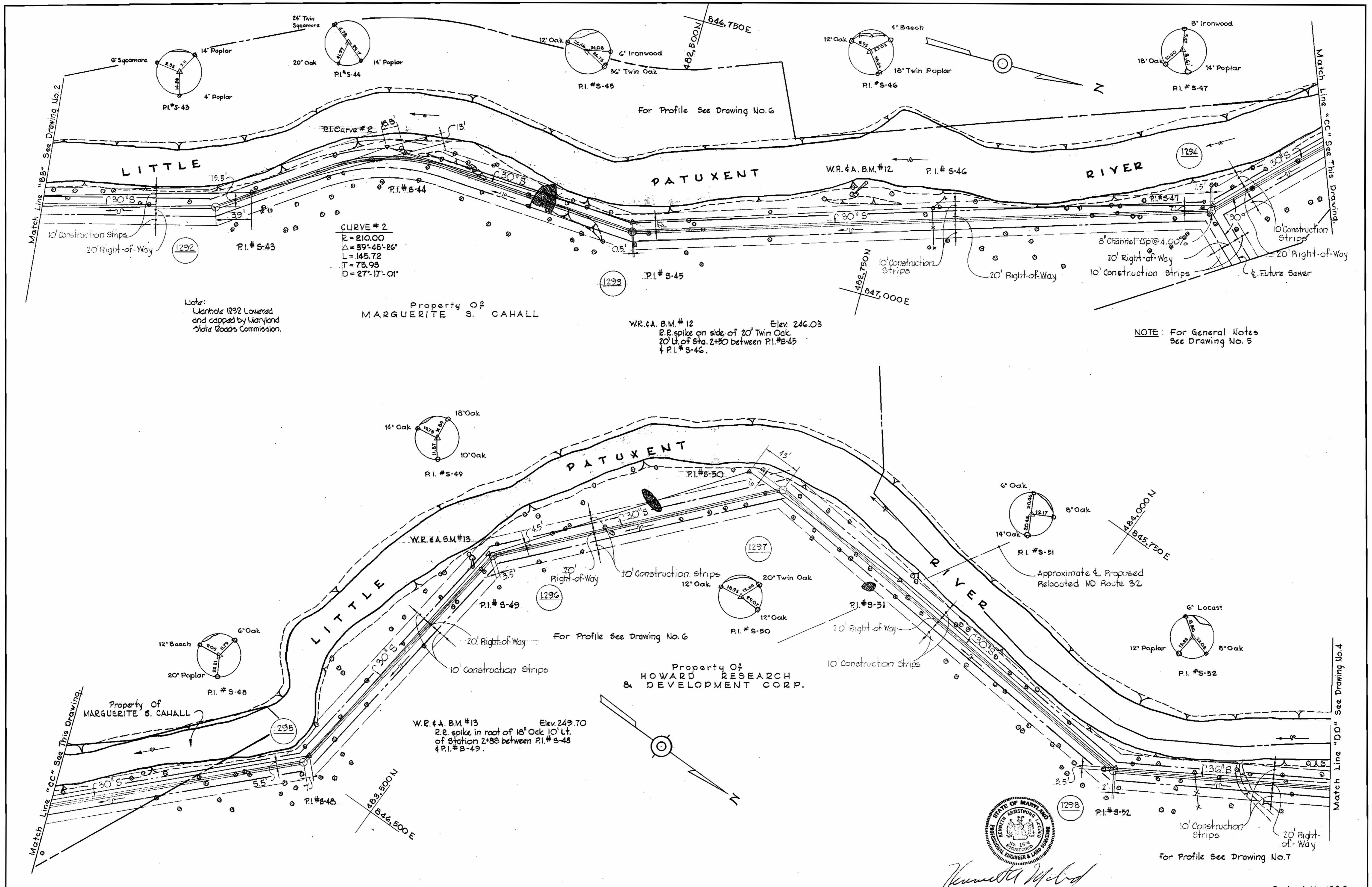


*James H. [Signature]*  
 Contract No. 120-S

WHITMAN, REQUARDT & ASSOCIATES ENGINEERS 1304 ST. PAUL ST. BALTIMORE, MARYLAND	HOWARD COUNTY METROPOLITAN COMMISSION DATE 5-12-66 <i>[Signature]</i> CHIEF ENGINEER	CONTRACT NO. 120-S	PLAN OF SEWER MAINS	LITTLE PATUXENT RIVER INTERCEPTOR SECTION NO. 3	DRAWING NO. 2 OF 7 SCALE 1" = 50' 481-485 480-485 479-485 F.D. 3906
---	--	--------------------	------------------------	--	--

W. O. 5651

AS BUILT 7 AUGUST 1967



Note:  
 Wellhole 1292 Lowered  
 and capped by Maryland  
 State Roads Commission.

NOTE: For General Notes  
 See Drawing No. 5

Property of  
 MARGUERITE S. CAHALL

W.R. & A. B.M. #12 Elev. 246.03  
 P.E. spike on side of 20' Twin Oak  
 20' Lt. of Sta. 2+50 between P.I. #S-45  
 & P.I. #S-46.

Property of  
 HOWARD RESEARCH  
 & DEVELOPMENT CORP.

W.R. & A. B.M. #13 Elev. 249.70  
 P.E. spike in root of 18' Oak 10' Lt.  
 of Station 2+88 between P.I. #S-48  
 & P.I. #S-49.



*Henrietta M. [Signature]*

Contract No. 120-S

WHITMAN, REQUARDT & ASSOCIATES ENGINEERS 1304 ST. PAUL ST. BALTIMORE, MARYLAND	HOWARD COUNTY METROPOLITAN COMMISSION DATE: 5-12-66 W. O. [Signature] CHIEF ENGINEER	CONTRACT NO. 120-S	PLAN OF SEWER MAINS	LITTLE PATUXENT RIVER INTERCEPTOR SECTION NO. 3	DRAWING NO. 3 OF 7 SCALE 1" = 50'	<table border="1"> <tr><td>481-485</td></tr> <tr><td>482-489</td></tr> <tr><td>483-484</td></tr> <tr><td>484-484</td></tr> <tr><td>485-484</td></tr> </table>	481-485	482-489	483-484	484-484	485-484
481-485											
482-489											
483-484											
484-484											
485-484											

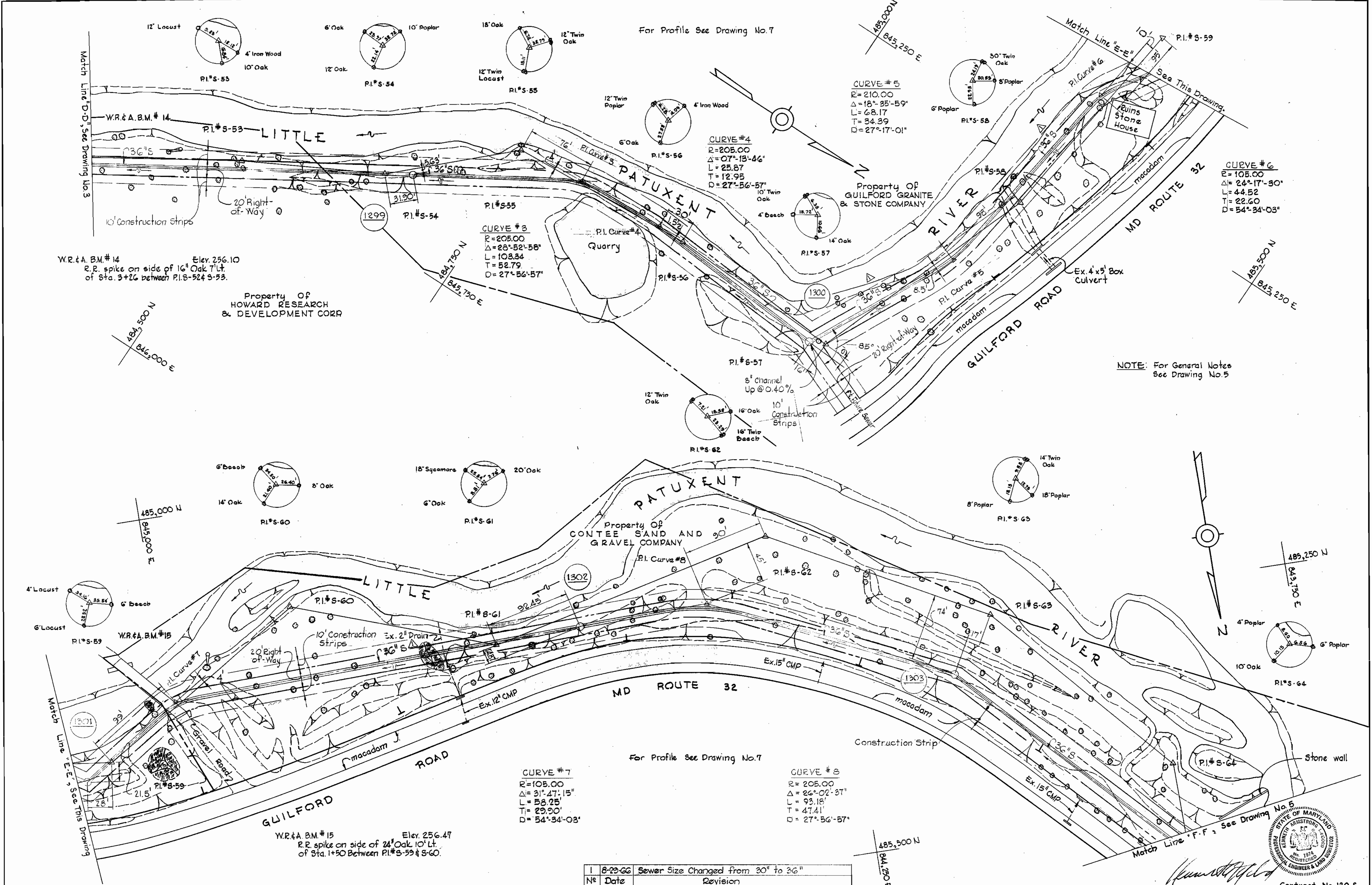
W. O. 5651

AS BUILT 7 AUGUST 1967

484-484  
 485-484

WS 1205/3

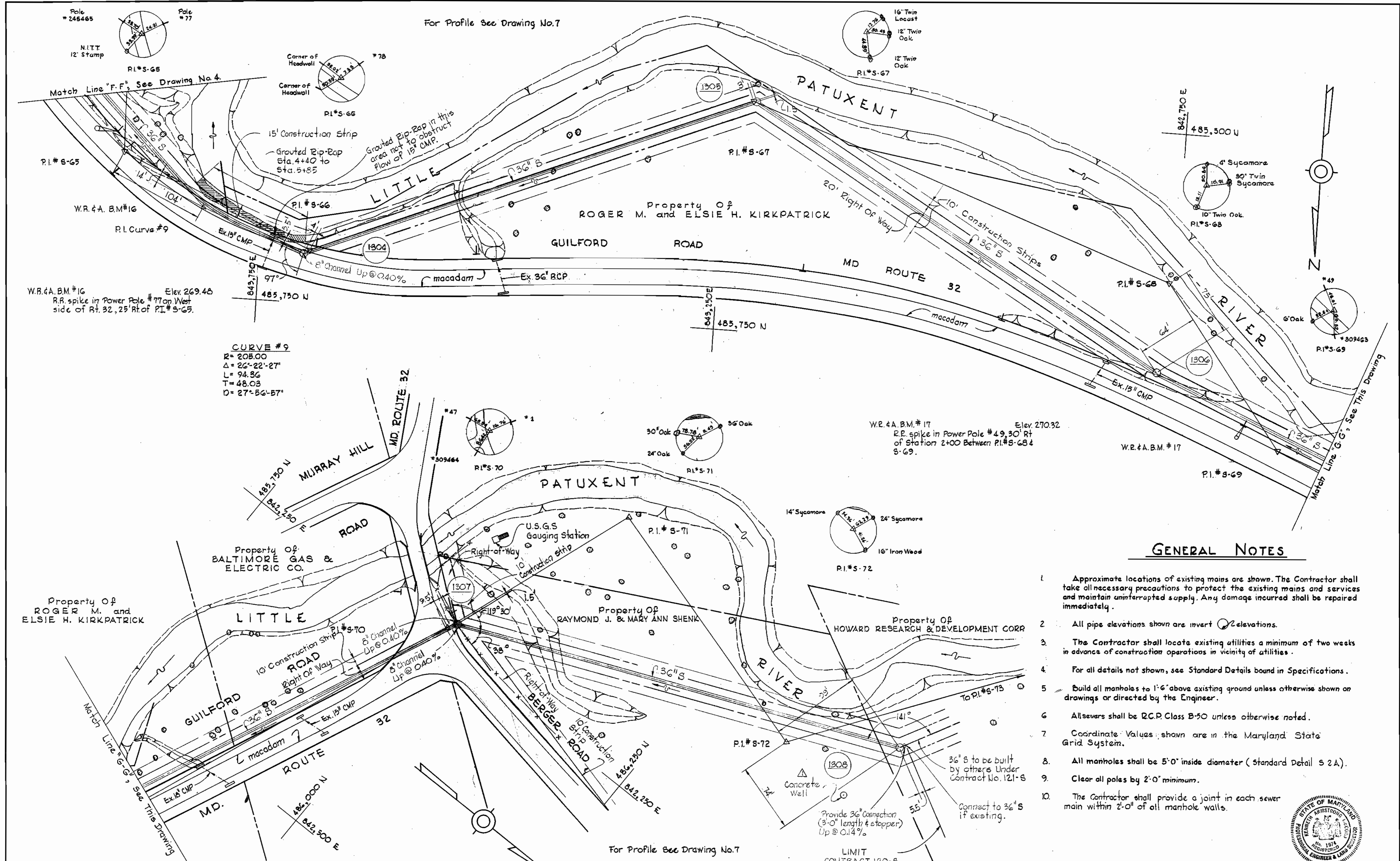
WS 120514



No	Date	Revision
1	8-29-66	Sewer Size Changed from 30" to 36"

WHITMAN, REQUARDT & ASSOCIATES ENGINEERS 1304 ST. PAUL ST. BALTIMORE, MARYLAND	HOWARD COUNTY METROPOLITAN COMMISSION DATE: 5-12-66 W. O. Lebeck CHIEF ENGINEER	CONTRACT NO. 120-S	PLAN OF SEWER MAINS	LITTLE PATUXENT RIVER INTERCEPTOR SECTION NO. 3	DRAWING NO. 4	SCALE 1" = 50'
					OF 7	484-484 485-485 485-484

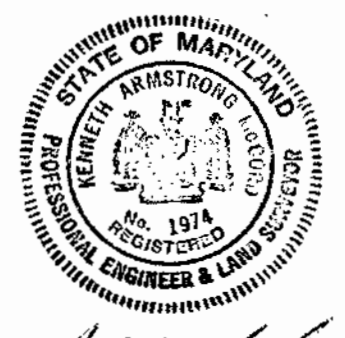
WS 1205/5



**CURVE #9**  
 R=205.00  
 Δ=26°-22'-27"  
 L=94.86  
 T=48.03  
 D=27°-56'-57"

**GENERAL NOTES**

1. Approximate locations of existing mains are shown. The Contractor shall take all necessary precautions to protect the existing mains and services and maintain uninterrupted supply. Any damage incurred shall be repaired immediately.
2. All pipe elevations shown are invert elevations.
3. The Contractor shall locate existing utilities a minimum of two weeks in advance of construction operations in vicinity of utilities.
4. For all details not shown, see Standard Details bound in Specifications.
5. Build all manholes to 1'-6" above existing ground unless otherwise shown on drawings or directed by the Engineer.
6. All sewers shall be R.C.P. Class B-50 unless otherwise noted.
7. Coordinate Values shown are in the Maryland State Grid System.
8. All manholes shall be 5'-0" inside diameter (Standard Detail S 2A).
9. Clear all poles by 2'-0" minimum.
10. The Contractor shall provide a joint in each sewer main within 2'-0" of all manhole walls.

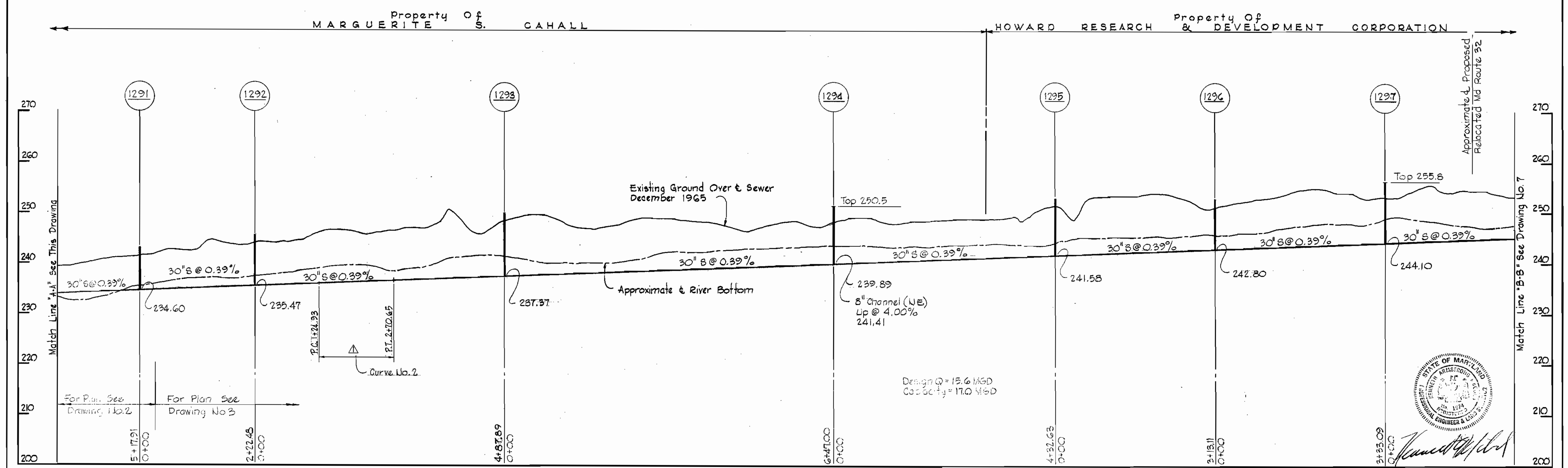
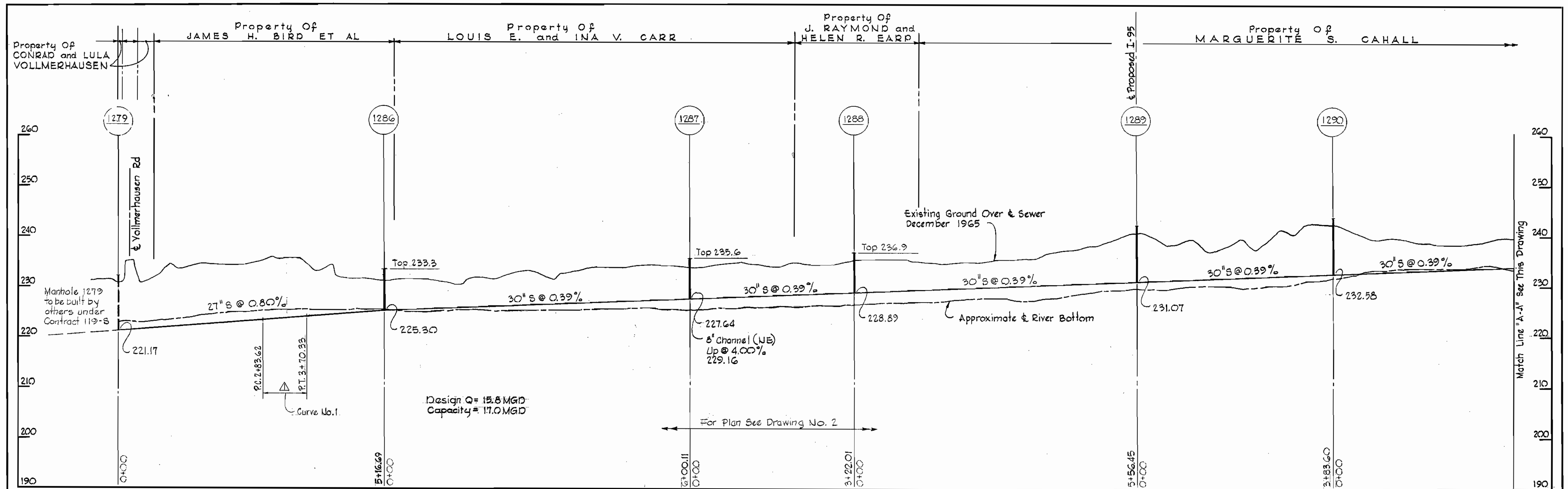


*James M. [Signature]*  
 Contract No. 120-S

Δ	6/17/66	Added Concrete Well in Shenk Property
No	Date	Revision

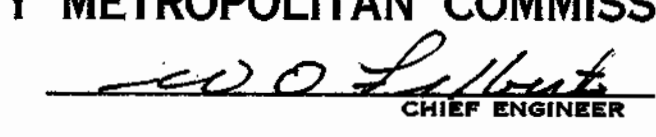
WHITMAN, REQUARDT & ASSOCIATES ENGINEERS 1304 ST. PAUL ST. BALTIMORE, MARYLAND	HOWARD COUNTY METROPOLITAN COMMISSION 5-12-66 DATE	CONTRACT NO. 120-S	PLAN OF SEWER MAINS	LITTLE PATUXENT RIVER INTERCEPTOR SECTION NO. 3	DRAWING NO. 5 OF 7	SCALE 1" = 50' 486-482 485-483 485-482
					AS BUILT 7 AUGUST 1967	

W. O. 5651



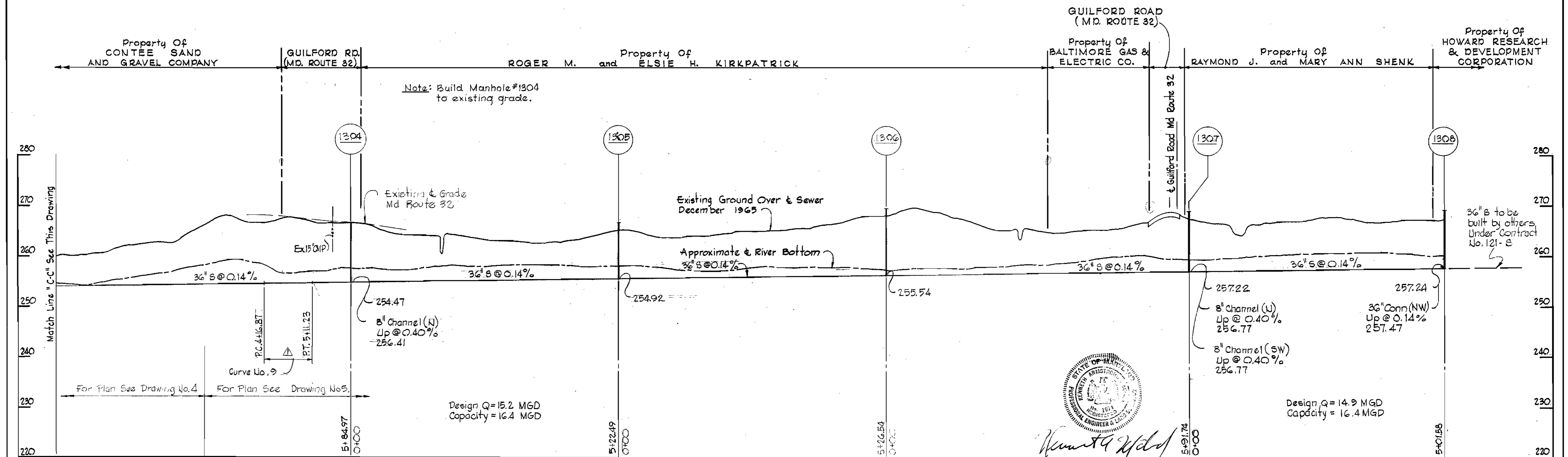
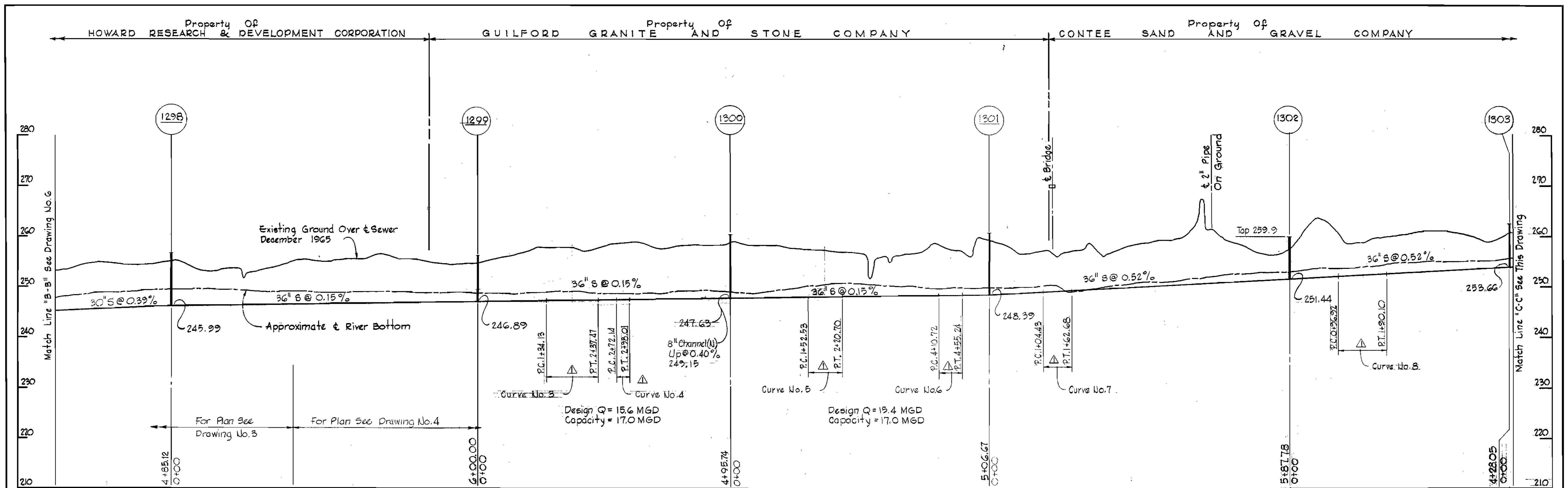
1	5-1-66	Curve Information Added
No.	Date	Revision



WHITMAN, REQUARDT & ASSOCIATES ENGINEERS 1304 ST. PAUL ST. BALTIMORE, MARYLAND	HOWARD COUNTY METROPOLITAN COMMISSION 5-12-66 DATE  CHIEF ENGINEER	CONTRACT NO. 120-S	PROFILE OF SEWER MAINS	LITTLE PATUXENT RIVER INTERCEPTOR SECTION NO. 3	DRAWING NO. 6 OF 7	SCALE H-1"=100' V-1"=10'	Contract No. 120-S

WS 120 S/6

ELLIOTT CO., PHO., PA. REORDER A-28874



No.	Date	Revision
1	8-1-66	Curve Information Added

<b>WHITMAN, REQUARDT &amp; ASSOCIATES</b> ENGINEERS 1304 ST. PAUL ST. BALTIMORE, MARYLAND	<b>HOWARD COUNTY METROPOLITAN COMMISSION</b> DATE <u>5-12-66</u> <i>W.O. L...</i> CHIEF ENGINEER	<b>CONTRACT NO. 120-S</b>	<b>PROFILE OF SEWER MAINS</b>	<b>LITTLE PATUXENT RIVER INTERCEPTOR SECTION NO. 3</b>	<b>DRAWING NO. 7 OF 7</b>	<b>SCALE H-1"=100' V-1"=10'</b>
--	--	---------------------------	-------------------------------	--	---------------------------	---------------------------------

W. O. 561

AS BUILT AUGUST 1967

WS 120 S/7