

**CONTRACT 119-S**  
**LITTLE PATUXENT RIVER INTERCEPTOR**  
**HOWARD COUNTY METROPOLITAN COMMISSION**  
**ELLICOTT CITY, MARYLAND**



*Handwritten signature*

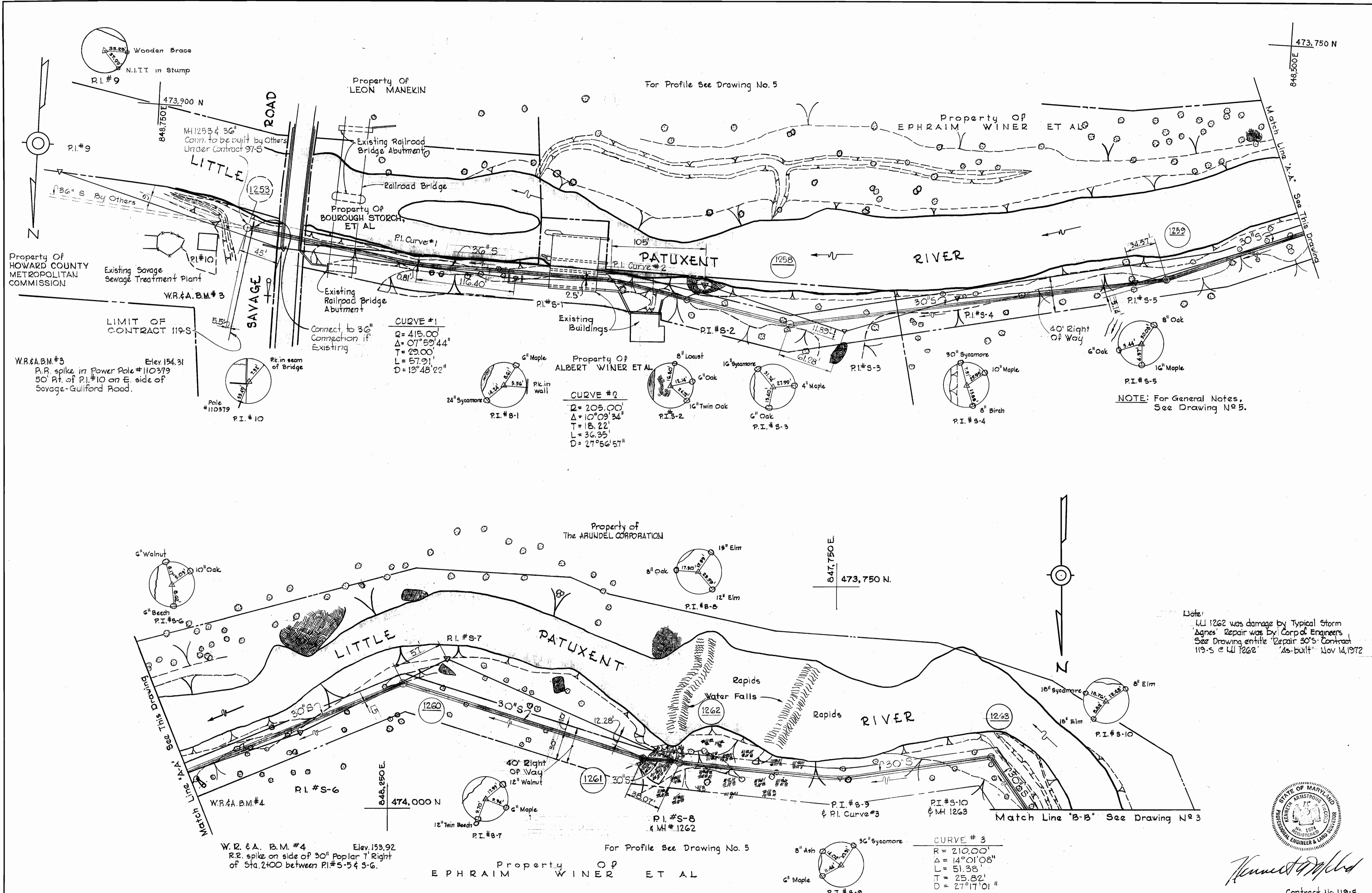
CONTRACT NO. 119-S

WHITMAN, REQUARDT & ASSOCIATES ENGINEERS 1304 ST. PAUL ST. BALTIMORE, MARYLAND	HOWARD COUNTY METROPOLITAN COMMISSION DATE <u>5-12-66</u> <i>W. O. S.</i> CHIEF ENGINEER	CONTRACT NO. <u>119-S</u>	LOCATION MAP	LITTLE PATUXENT RIVER INTERCEPTOR SECTION NO. 2	DRAWING NO. <u>1</u> OF <u>6</u>	SCALE AS SHOWN
---	--	---------------------------	--------------	--	-------------------------------------	----------------

W. O. 5651

NOV. 10 1967

WS 119S/1



NOTE: For General Notes, See Drawing No. 5.

Note: LI 1262 was damaged by Typical Storm Agnes' Repair was by Corp of Engineers See Drawing entitled 'Repair 30'S Contract 119-S e LI 1262' 'As-built' Nov 14, 1972



*Arthur Ariston*  
Contract No. 119-S

WHITMAN, REQUARDT & ASSOCIATES ENGINEERS 1304 ST. PAUL ST. BALTIMORE, MARYLAND	HOWARD COUNTY METROPOLITAN COMMISSION DATE 5-12-66 <i>W.O. Libbert</i> CHIEF ENGINEER	CONTRACT NO. 119-S	PLAN OF SEWER MAINS	LITTLE PATUXENT RIVER INTERCEPTOR SECTION NO. 2	DRAWING NO. 2 OF 6	SCALE 1" = 50' 474-486 474-487 473-488
---	---	--------------------	------------------------	--	--------------------------	--

W. O. 5651

NOV. 10 1967

BUILT

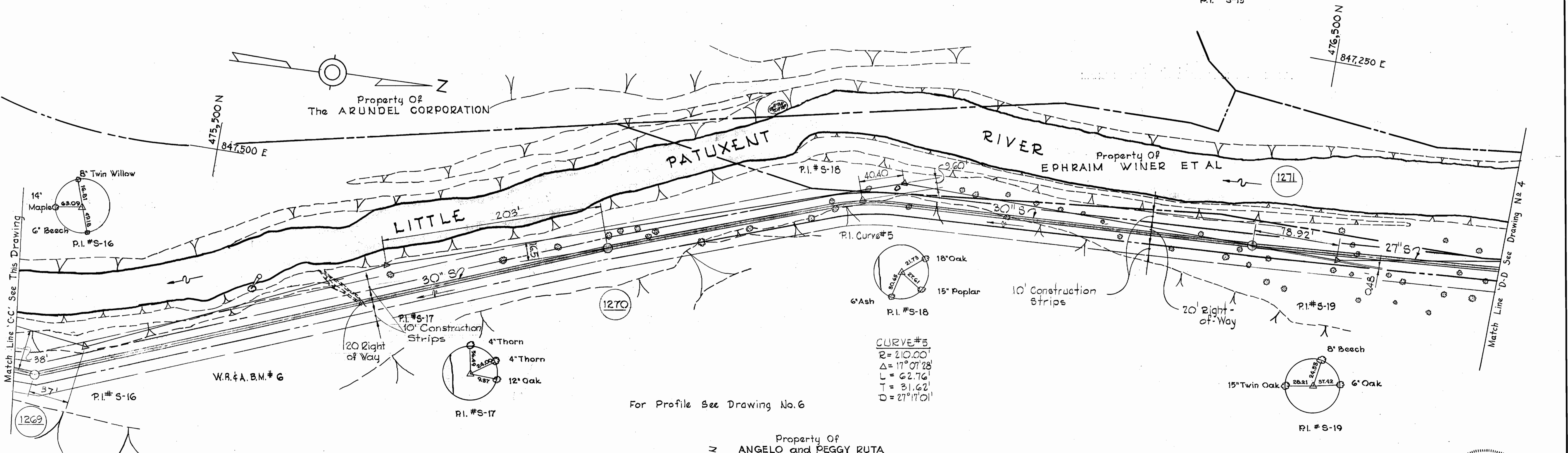
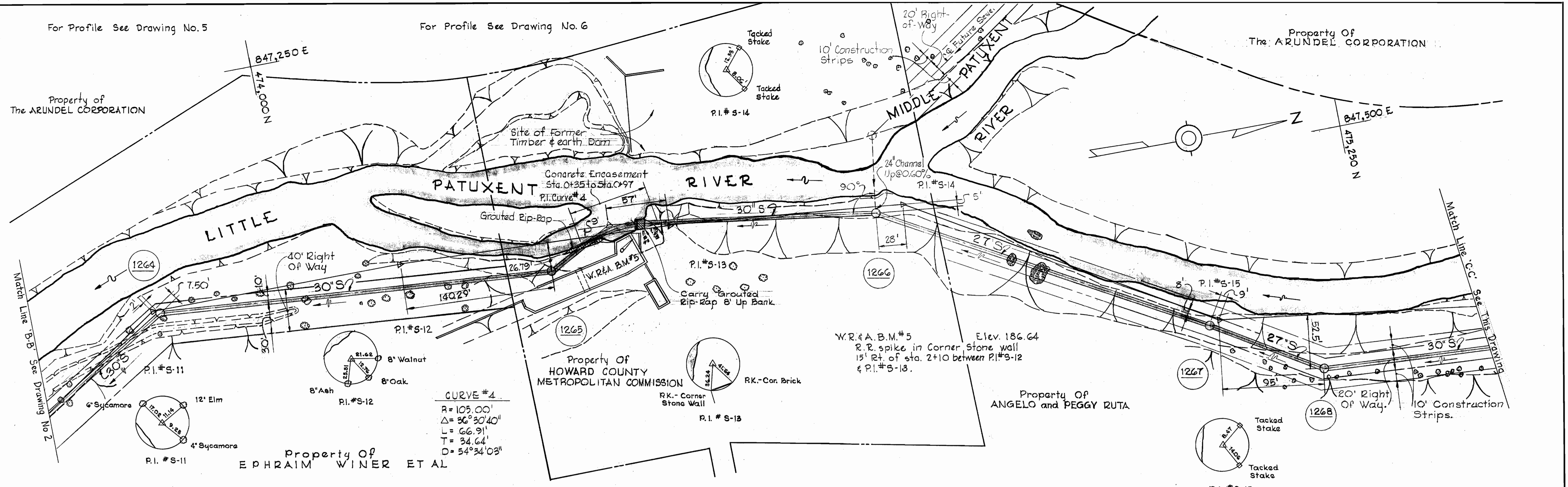
WS 1195/2

For Profile See Drawing No.5

For Profile See Drawing No.6

Property of  
The ARUNDEL CORPORATION

Property Of  
The ARUNDEL CORPORATION



NOTE: For General Notes, See Drawing No. 5.

W.R. & A. B.M. # 6 Elev. 191.14  
R.R. spike on side of 10" Walnut 10' Lt. of sta. 1+60 between P.I. #S-16 & P.I. #S-17.

W.R. & A. B.M. # 5 Elev. 186.64  
R.R. spike in Corner Stone wall 15' Rt. of sta. 2+10 between P.I. #S-12 & P.I. #S-13.



Contract No. 119-S

WHITMAN, REQUARDT & ASSOCIATES  
ENGINEERS  
1304 ST. PAUL ST.  
BALTIMORE, MARYLAND

HOWARD COUNTY METROPOLITAN COMMISSION  
5-12-66 DATE  
W. O. Whitman CHIEF ENGINEER

CONTRACT NO. 119-S

PLAN OF  
SEWER MAINS

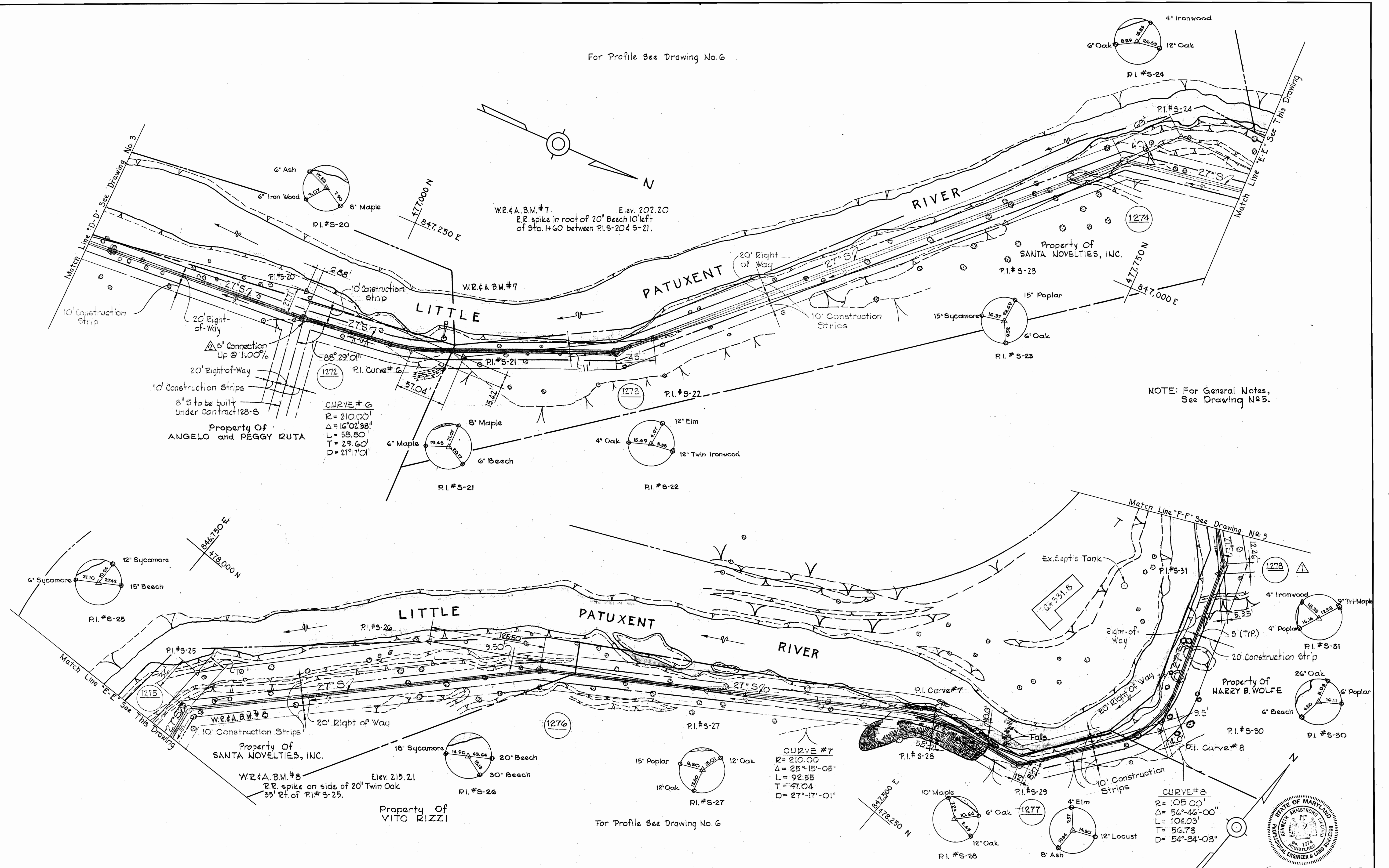
LITTLE PATUXENT RIVER INTERCEPTOR  
SECTION NO. 2

DRAWING NO. 3 OF 6  
SCALE 1"=50'

WS 1195/3

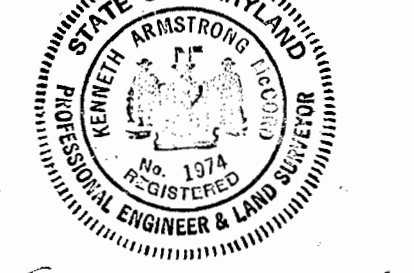
NOV. 10, 1967

For Profile See Drawing No. 6



NOTE: For General Notes, See Drawing No. 5.

No.	Date	Revision
2	9-1-66	Changed 8' Chan @ 12.00% to 8' Conn. @ 1.00%
1	7-28-66	Changed Alignment W#1277 sta. 5+09.52 to W#1279.



Contract No. 119-S

<b>WHITMAN, REQUARDT &amp; ASSOCIATES</b> ENGINEERS 1304 ST. PAUL ST. BALTIMORE, MARYLAND	<b>HOWARD COUNTY METROPOLITAN COMMISSION</b> DATE: 5-12-66 CHIEF ENGINEER: [Signature]	<b>CONTRACT NO. 119-S</b>	<b>PLAN OF SEWER MAINS</b>	<b>LITTLE PATUXENT RIVER INTERCEPTOR SECTION NO. 2</b>	<b>DRAWING NO. 4 OF 6</b> <b>SCALE 1"=50'</b> 475-484 475-485 477-486 477-487
--	--	---------------------------	----------------------------	--	--

W.O. 5651

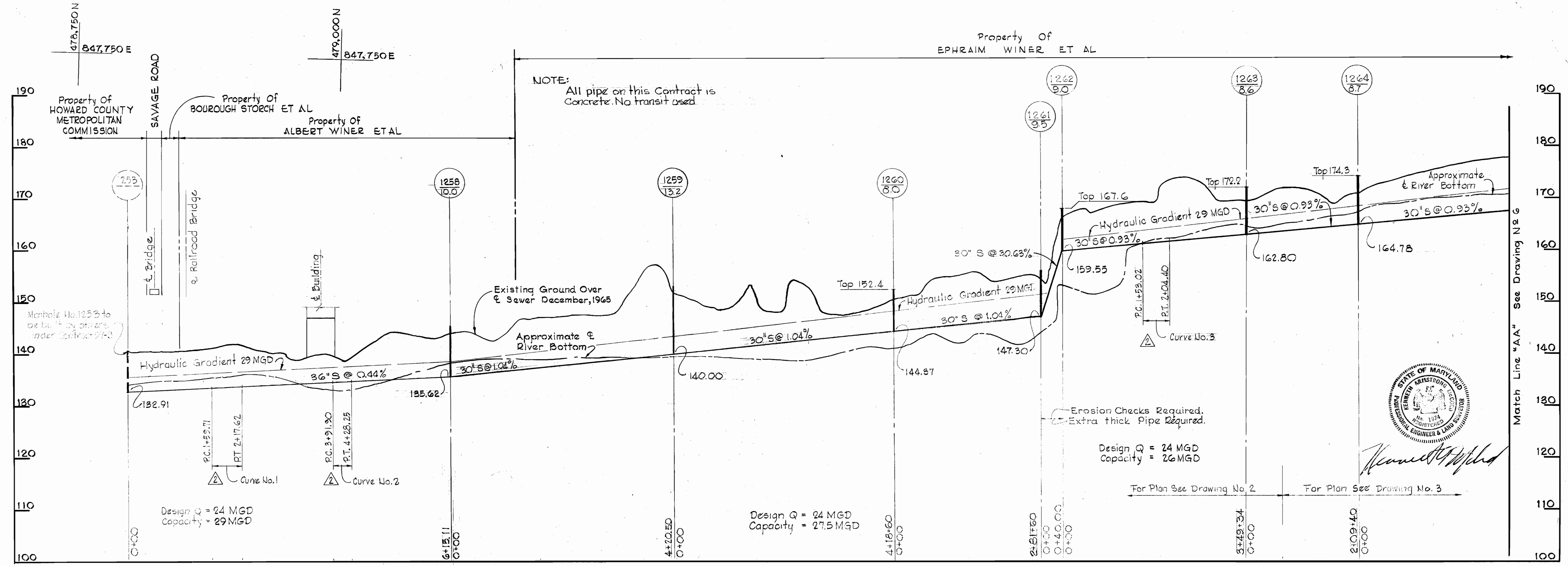
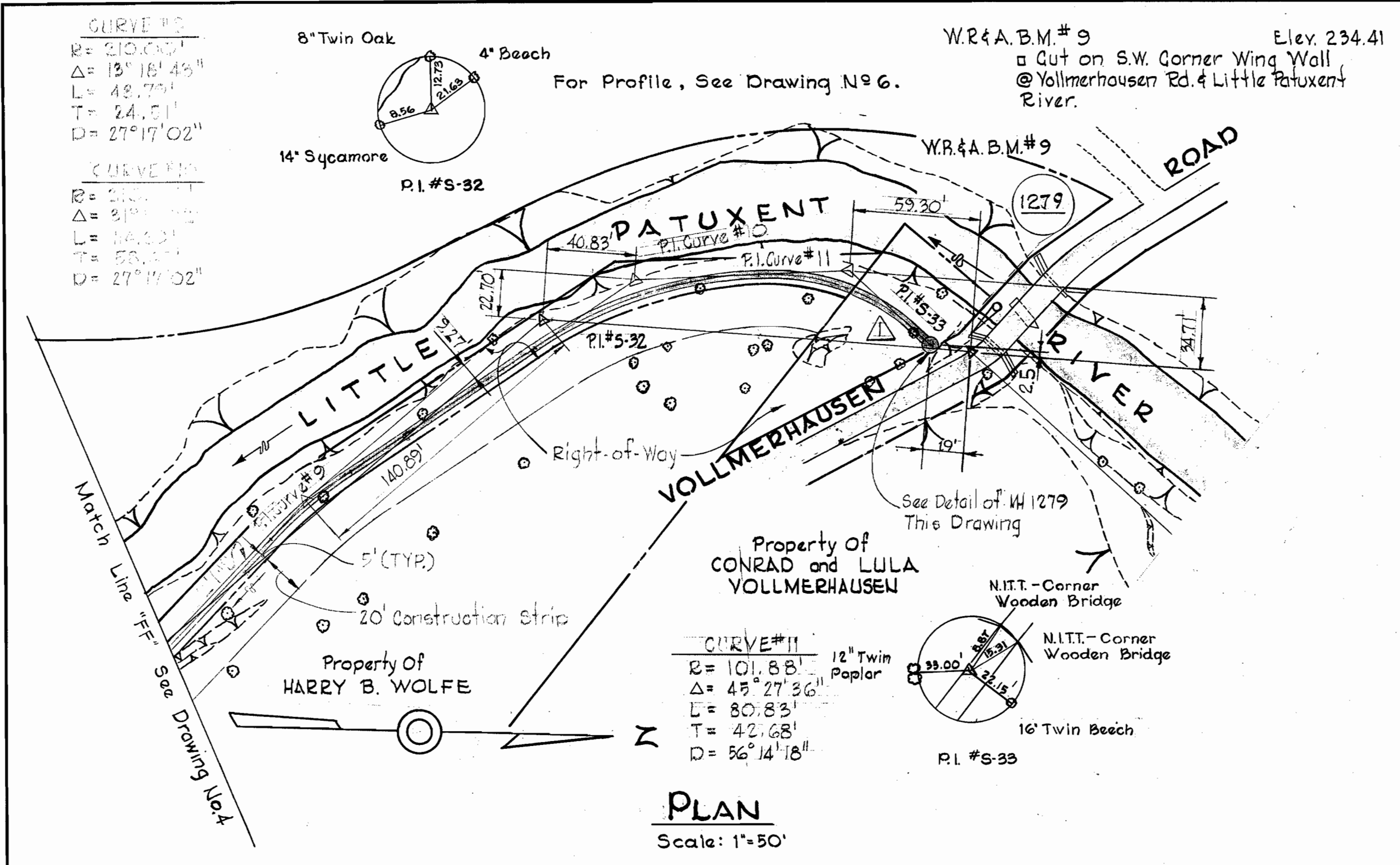
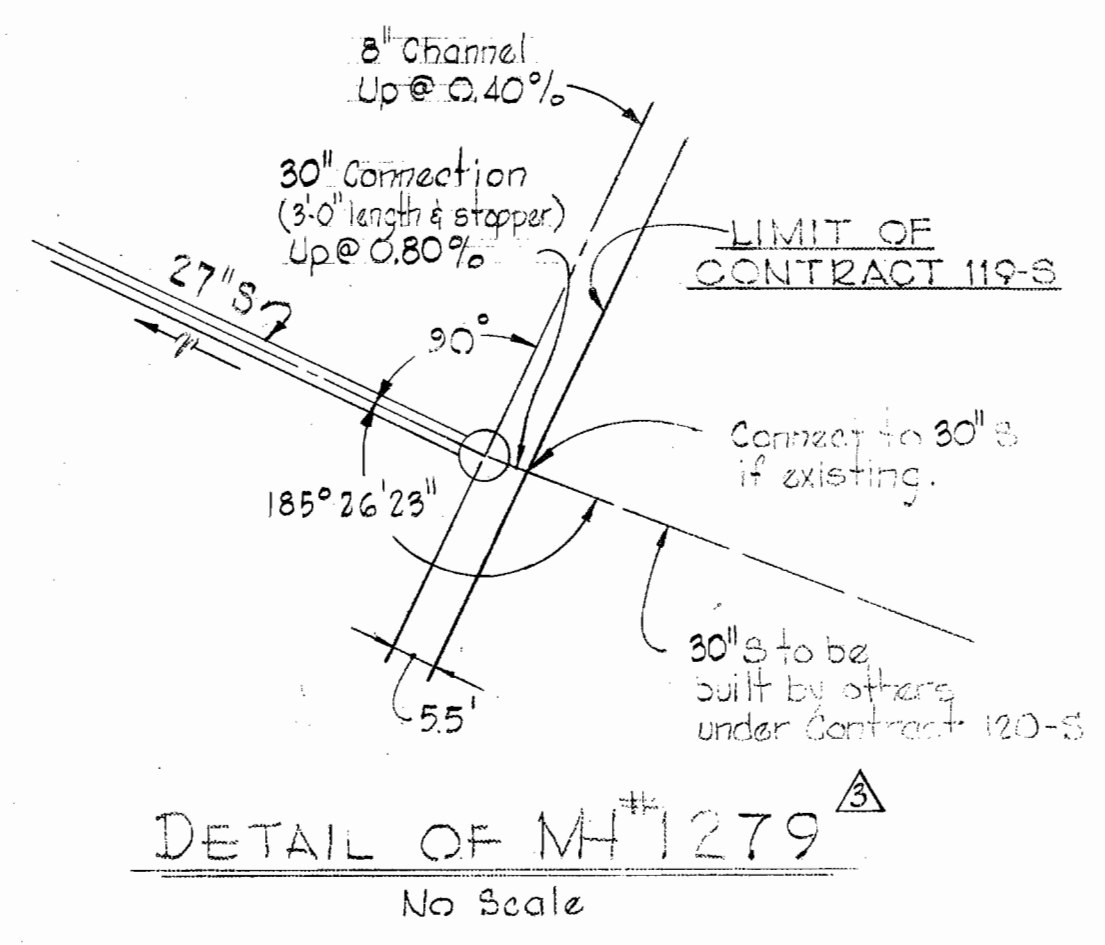
NOV. 10, 1967

475-487  
F.B. #9505

WS 119S/4

**GENERAL NOTES**

1. Approximate locations of existing mains are shown. The Contractor shall take all necessary precautions to protect the existing mains and services and maintain uninterrupted supply. Any damage incurred shall be repaired immediately.
2. All pipe elevations shown are invert  $\phi$  elevations.
3. The Contractor shall locate existing utilities a minimum of two weeks in advance of construction operations in vicinity of utilities.
4. For all details not shown, see Standard Details bound in Specifications.
5. Build all manholes to 1'-6" Min. above existing ground unless otherwise shown on drawings or directed by the Engineer.
6. All sewers shall be R.C.P., Class B-50 unless otherwise noted.
7. Cost of grouted rip-rap shall be included in the unit price bid for excavation and backfill of sewers.
8. All manholes shall be 5'-0" inside diameter (Standard Detail 5 2 A).
9. All manholes shall have standard Frames and Covers except Manhole Numbers 1266, 1273, 1274 and 1277 which shall have watertight frames and covers (Standard Detail 5-12).
10. Coordinate values shown are in the Maryland State Grid System.
11. The Contractor shall provide a joint in each sewer main within 2'-0" of all manhole walls.



No.	Date	Revision
3	8-1-66	Changed 27" Conn. @ MH 1279 to a 30" Conn.

**PROFILE**  
Scale: Horiz. 1"=100'  
Vert. 1"=10'

No.	Date	Revision
2	8-1-66	Curve Information Added
1	7-28-66	Changed Alignment MH# 1277 sta. 3+05.52 to MH# 1279

WHITMAN, REQUARDT & ASSOCIATES ENGINEERS 1304 ST. PAUL ST. BALTIMORE, MARYLAND	HOWARD COUNTY METROPOLITAN COMMISSION S-12-66 DATE	CONTRACT NO. 119-S	PLAN AND PROFILE OF SEWER MAINS	LITTLE PATUXENT RIVER INTERCEPTOR SECTION NO. 2	DRAWING NO. 5 OF 6	SCALE AS SHOWN
					Contract No. 119-S	NOV 10, 1967

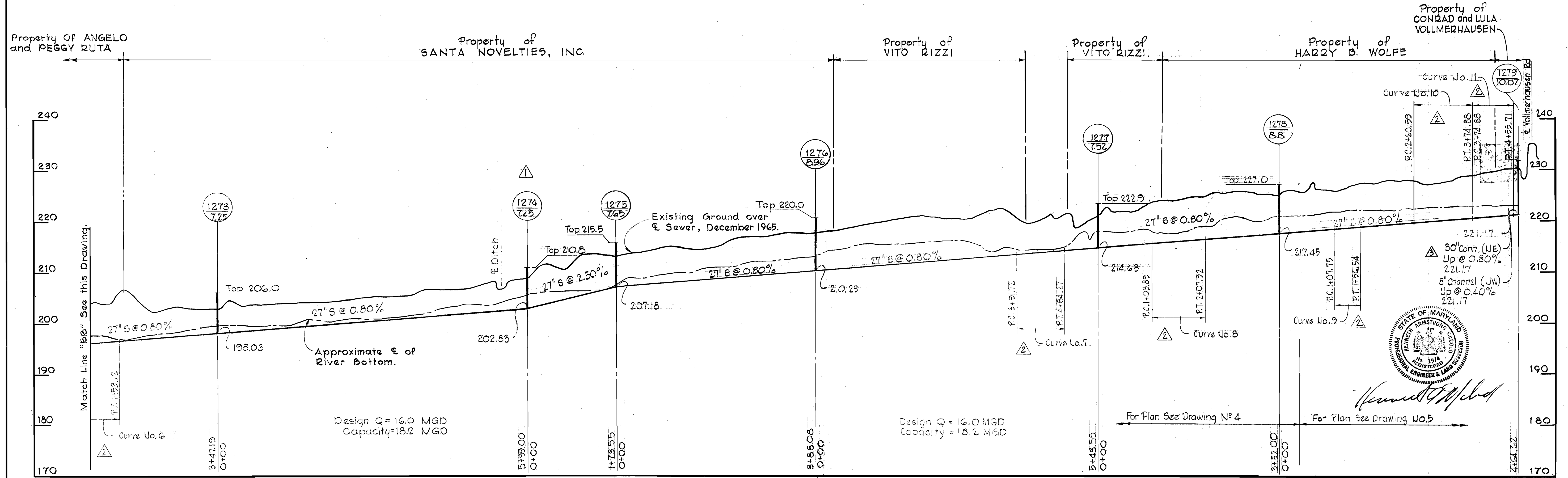
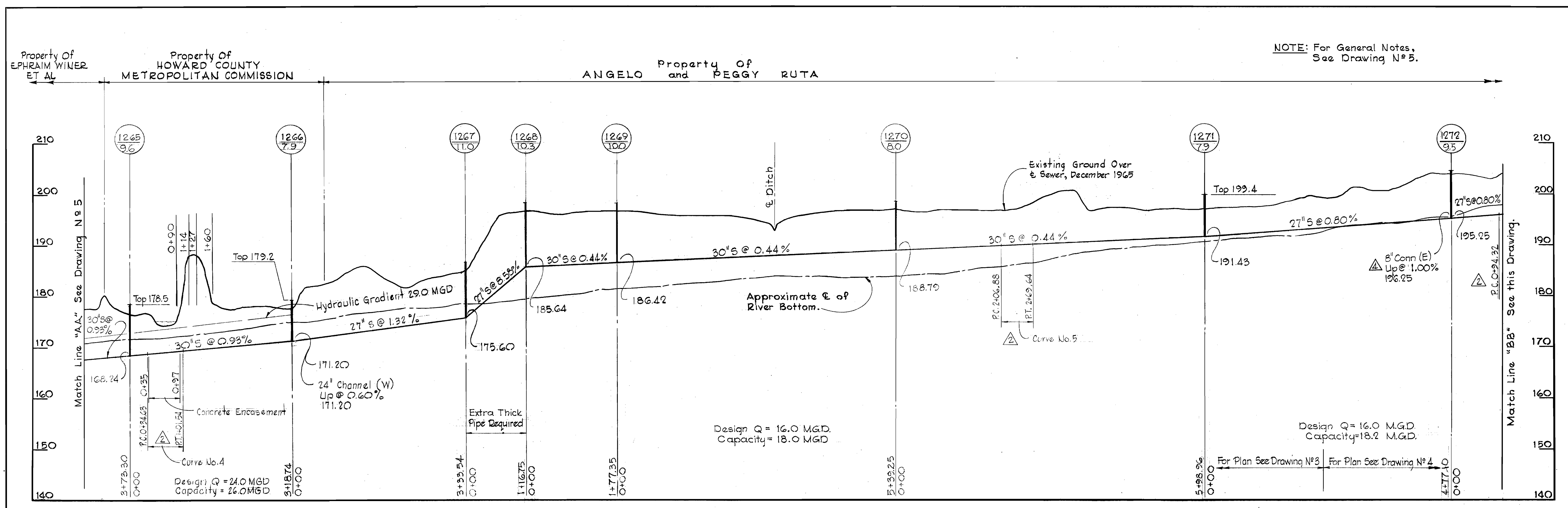
WS 1195/5

W.O. 5651

NOV 10, 1967

F.B. #3505

NOTE: For General Notes, See Drawing N° 5.



N°	Date	Revision
4	9-1-66	Changed Slope of 8" Connection from 12.00% to 1.00%
3	9-1-66	Changed 27" Conn. @ MH 1279 to a 30" Conn.
2	8-1-66	Curve Information Added.
1	7-28-66	Changed Profile between MH # 1274 and MH # 1279.

<b>WHITMAN, REQUARDT &amp; ASSOCIATES</b> ENGINEERS 1304 ST. PAUL ST. BALTIMORE, MARYLAND	<b>HOWARD COUNTY METROPOLITAN COMMISSION</b> DATE: <u>5-12-66</u> CHIEF ENGINEER: <u>[Signature]</u>	<b>CONTRACT NO. 119-S</b>	<b>PROFILE OF SEWER MAINS</b>	<b>LITTLE PATUXENT RIVER INTERCEPTOR SECTION NO. 2</b>	<b>DRAWING NO. 6 OF 6</b>	<b>SCALE H-1"=100' V-1"=10'</b>
--	--	---------------------------	-------------------------------	--	---------------------------	---------------------------------

W. O. 5451

NOV. 10, 1967

WS 119S/6