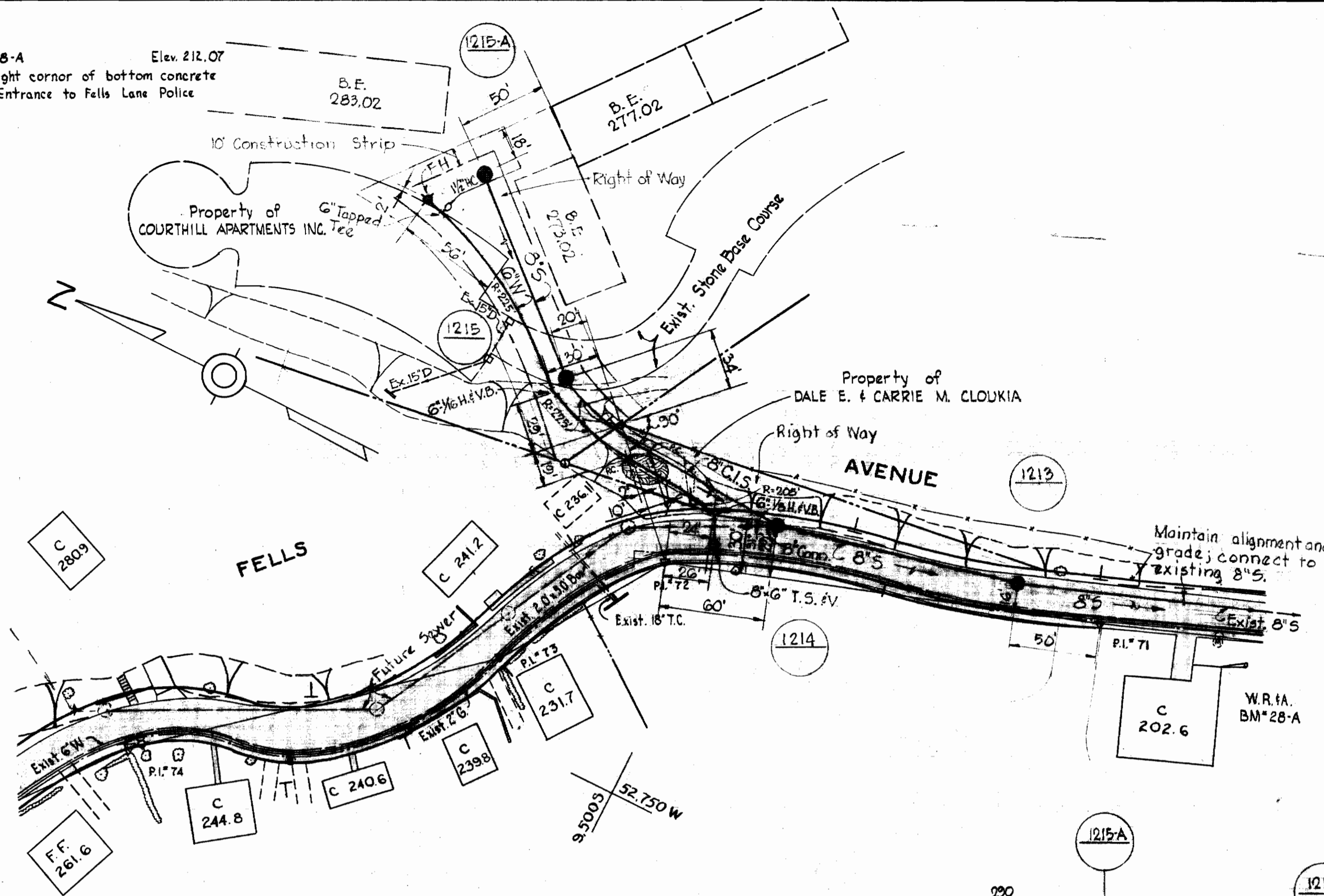
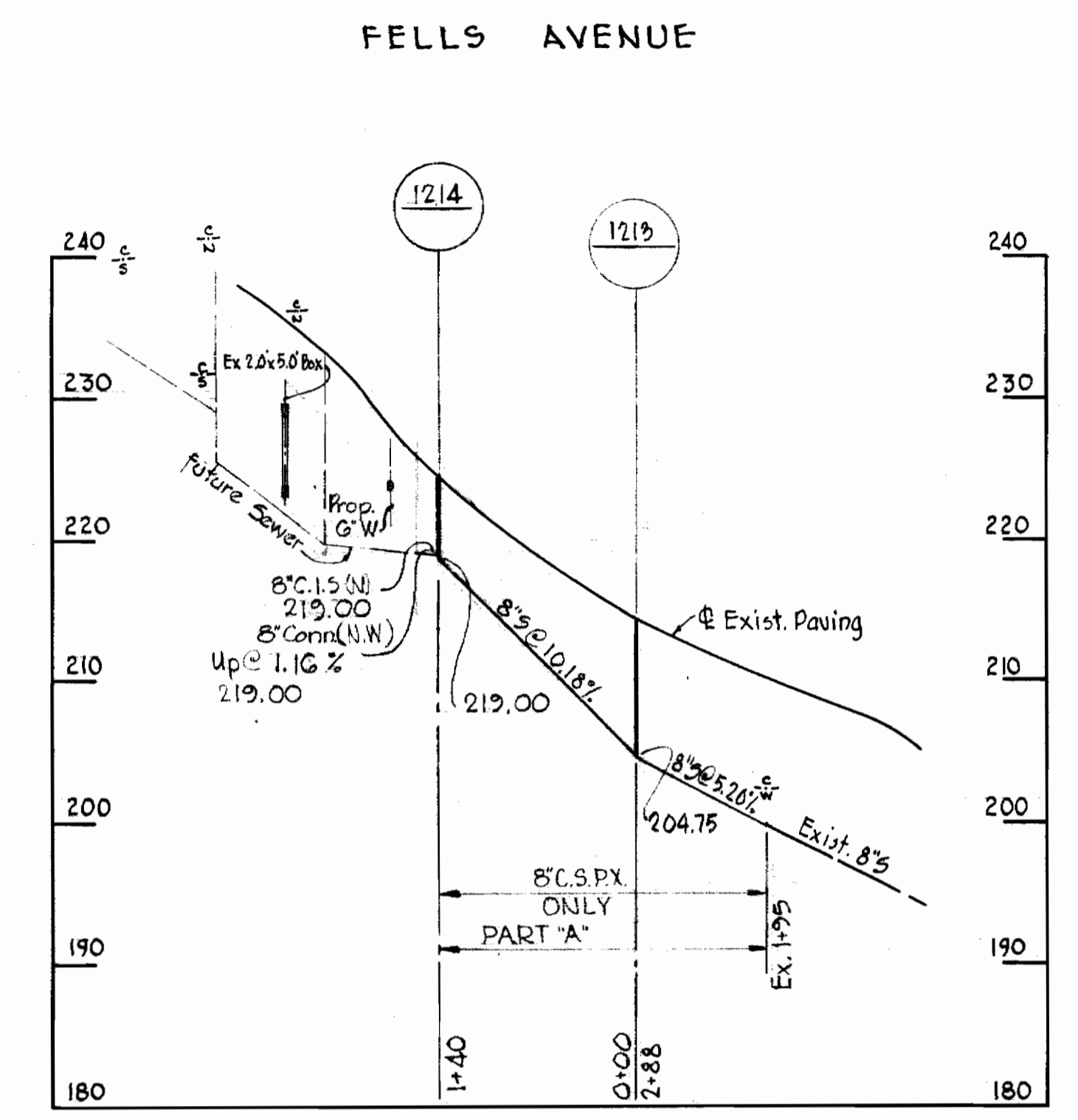


WRIA, BM*28-A
 Elev. 212.07
 *cut in right corner of bottom concrete
 step of Entrance to Fells Lane Police
 Station.



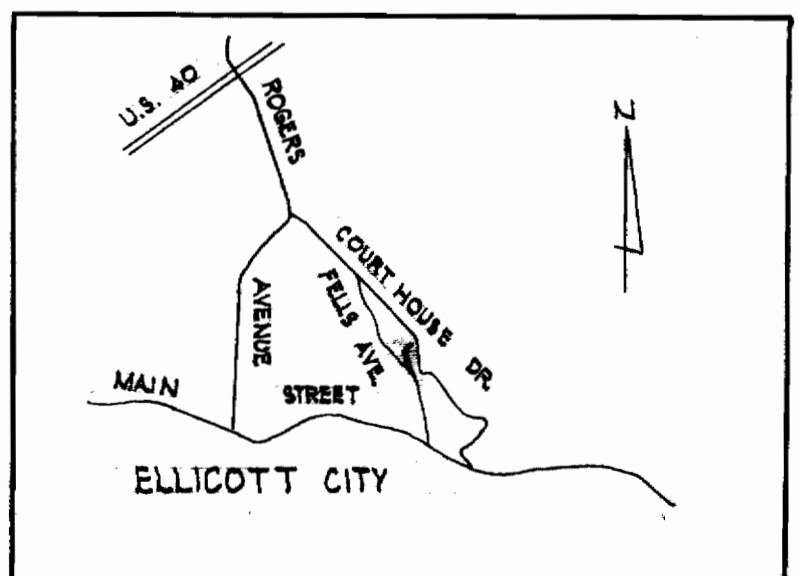
PLAN
 Scale 1"=50'



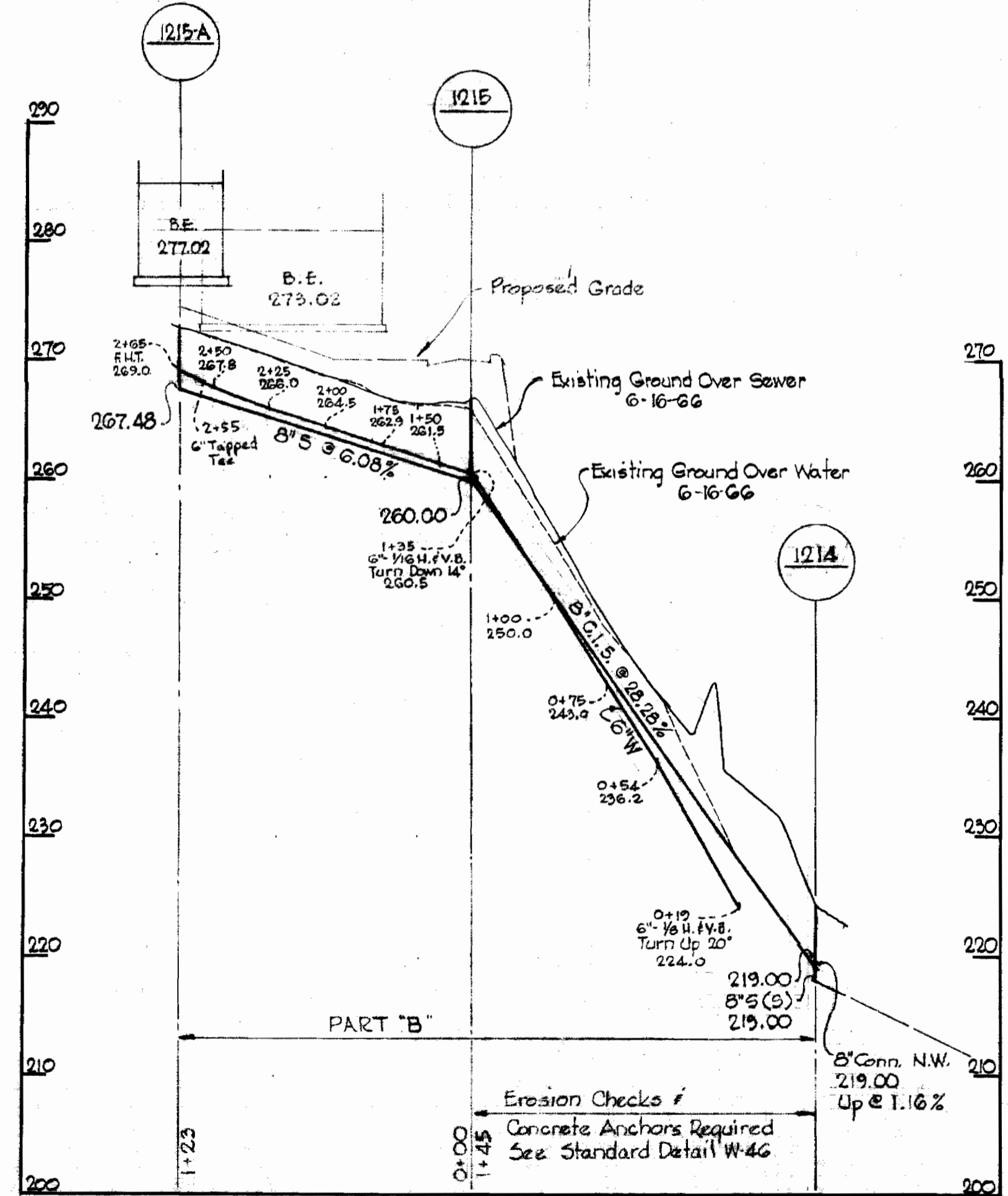
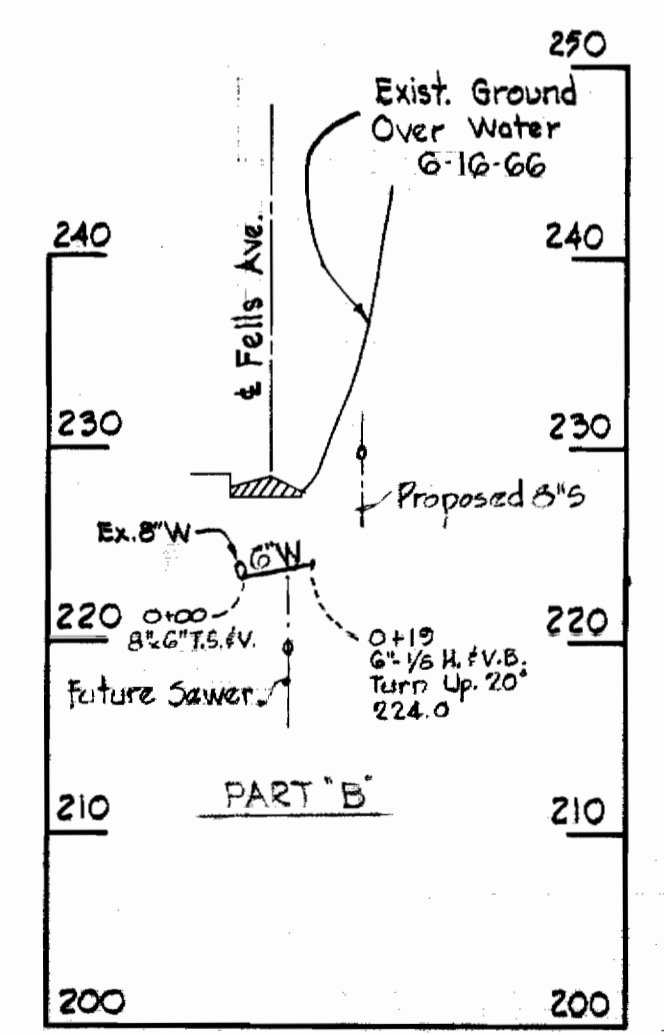
PROFILE
 Vert. 1"=10'
 Scale Horz. 1"=100'

GENERAL NOTES

1. Approximate location of existing mains are shown. The Contractor shall take all necessary precautions to protect existing mains and services and maintain uninterrupted supply. Any damage incurred shall be repaired immediately.
2. All pipe elevations shown are invert elevations.
3. The Contractor shall locate existing utilities a minimum of two weeks in advance of construction operations in vicinity of utilities.
4. For all standard details see Standards bound in Specifications.
5. All water mains to be C.I.P. Class 22 and have a minimum of 3 1/2' cover.
6. Block all fittings with concrete, see standard details bound in Specifications.
7. Bury line elevation on fire hydrant shall be set the same as edge of paving or as directed by the Engineer in the field.
8. Buttress fire hydrants with concrete; provide copper pipe at weep holes as required for positive drainage. For Buttress dimensions see standard detail W-8 Buttress for Caps.
9. Clear all poles by 2'-0" minimum or tunnel as required. Clear all existing utilities by 6" minimum.
10. All 8" C.I. sewer pipe to be Class 22.
11. Build all manholes to existing ground level unless otherwise noted.

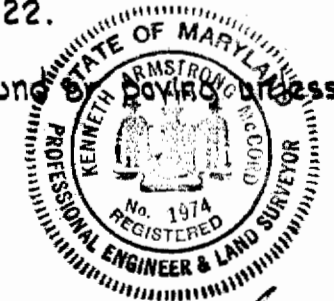


LOCATION MAP
 Scale: 1" = 1/2 mile



PROFILES
 Scale: H: 1"=50'
 V: 1"=10'

Note:
 Erosion Checks and Anchors shall be included in the unit price bid for furnishing and laying cast iron sewer mains.



James A. Welch
 Court House Drive Apartments
 Contract No. 118-W&S

WHITMAN, REQUARDT & ASSOCIATES ENGINEERS 1304 ST. PAUL ST. BALTIMORE, MARYLAND	HOWARD COUNTY METROPOLITAN COMMISSION DATE: 3-28-66 <i>W. O. Filbeck</i> CHIEF ENGINEER	CONTRACT NO. 118-W&S	PLAN & PROFILES OF WATER AND SEWER MAINS	ELLCOTT CITY SUB-DISTRICT	DRAWING NO. 1 OF 1 SCALE AS SHOWN 10 SW 32 FB 3165
--	---	---------------------------------	---	----------------------------------	---

W. O. 5129-2

AS BUILT JUNE 24, 1966

WS 118W&S/1