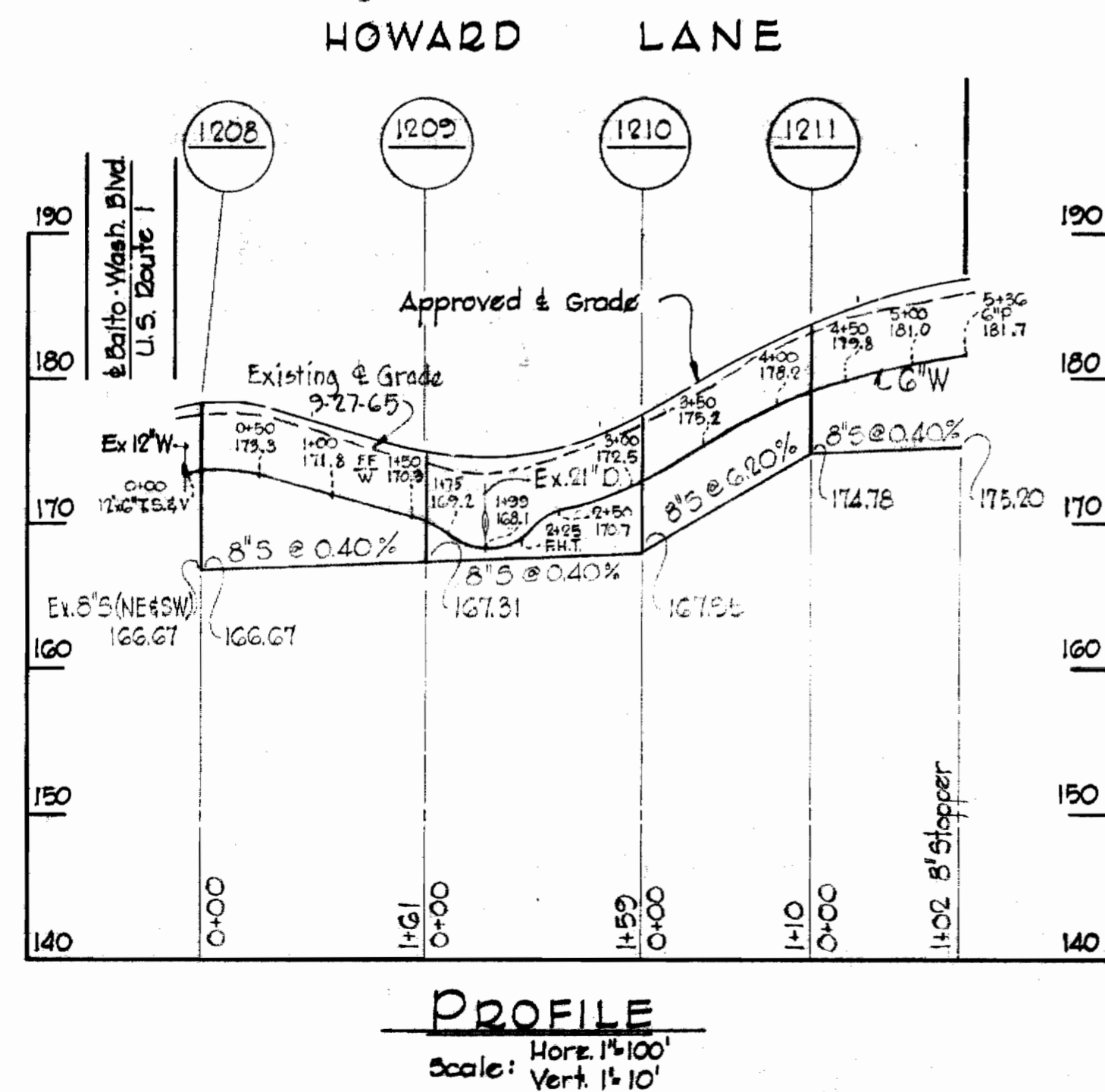
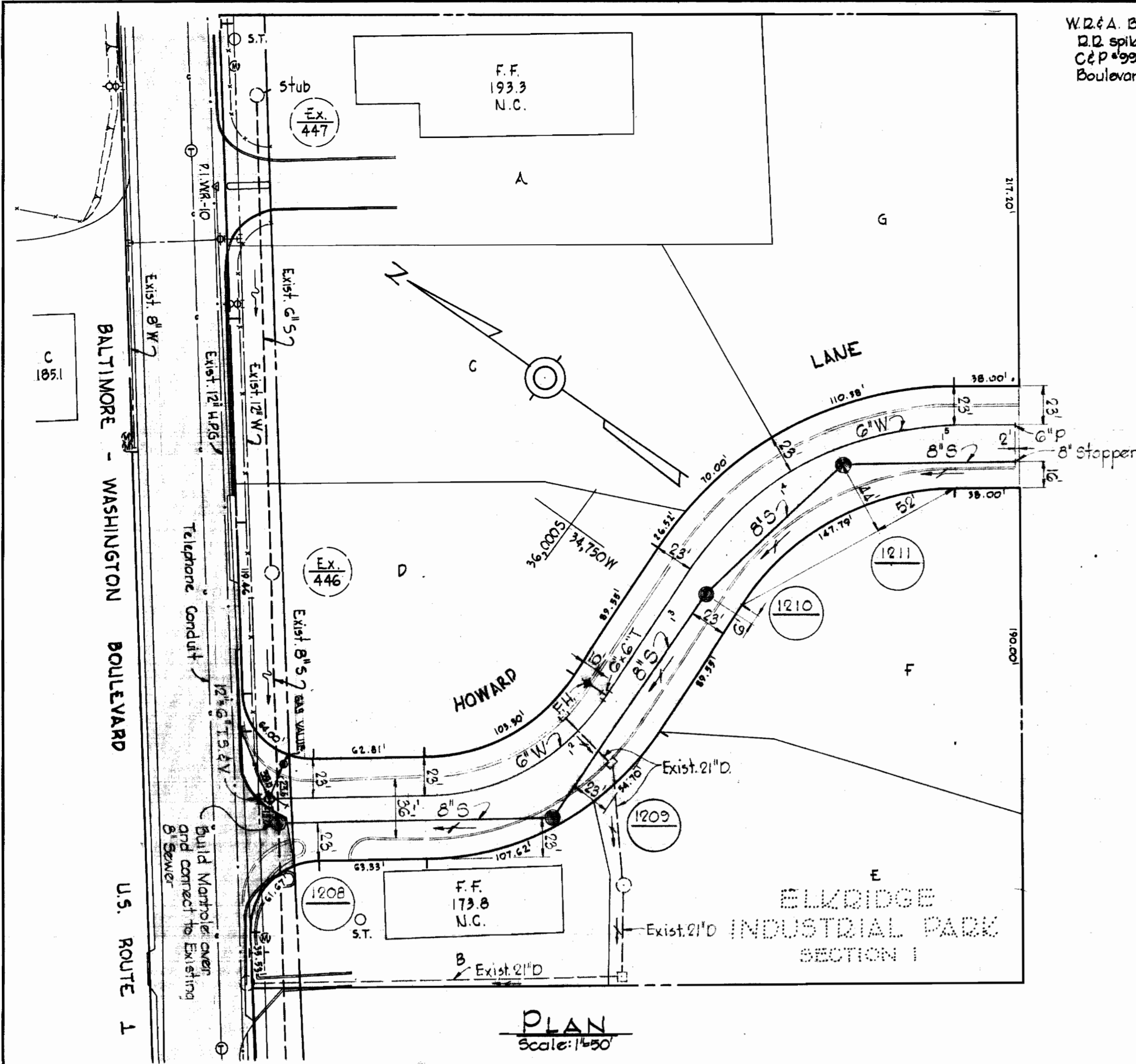


W.2 & A. BM*100 Elev. 165.42
 I.D. spike in pole, G & E*172880
 C & P*99 S.E. corner of Washington
 Boulevard & Loudon Avenue.

GENERAL NOTES

1. Approximate location of existing mains are shown. The Contractor shall take all necessary precautions to protect existing mains and services and maintain uninterrupted supply. Any damage incurred shall be repaired immediately.
2. All pipe elevations shown are invert elevations.
3. The Contractor shall locate existing utilities a minimum of two weeks in advance of construction operations in vicinity of utilities.
4. For all standard details see Standards bound in the Specifications.
5. All water mains to be C.I.P. Class 22 and have a minimum of 3 1/2' cover.
6. Block all fittings with concrete, see standard details bound in Specifications.
7. Bury line elevation on fire hydrant shall be set the same as edge of paving or as directed by the Engineer in the field.
8. Buttress fire hydrants with concrete; provide copper pipe at weep holes as required for positive drainage. For Buttress dimensions see standard detail W-8 Buttress for Caps.
9. All sewers shall be V.C.P.X, C.S.P.X or Asbestos Cement Class 2400 unless otherwise noted.
10. Clear all poles by 2'-0" minimum or tunnel as required. Clear all utilities by 6" minimum.



| | | | | | |
|---|---|----------------------|--|-------------------------|---|
| WHITMAN, REQUARDT & ASSOCIATES ENGINEERS 1304 ST. PAUL ST. BALTIMORE, MARYLAND | HOWARD COUNTY METROPOLITAN COMMISSION 9.20.65 <i>W.O. Gilbert</i> DATE CHIEF ENGINEER | CONTRACT NO. 109 W&S | PLAN AND PROFILE OF WATER AND SEWER MAINS | ELKRIDGE SUB - DISTRICT | Contract 109 W&S DRAWING NO. 1 OF 1 SCALE AS SHOWN 32 SW 24 37 SW 24 FB 2756 |
|---|---|----------------------|--|-------------------------|---|

W. O. 5129-2

AS BUILT 17 JAN. 66

I/5W601 SW