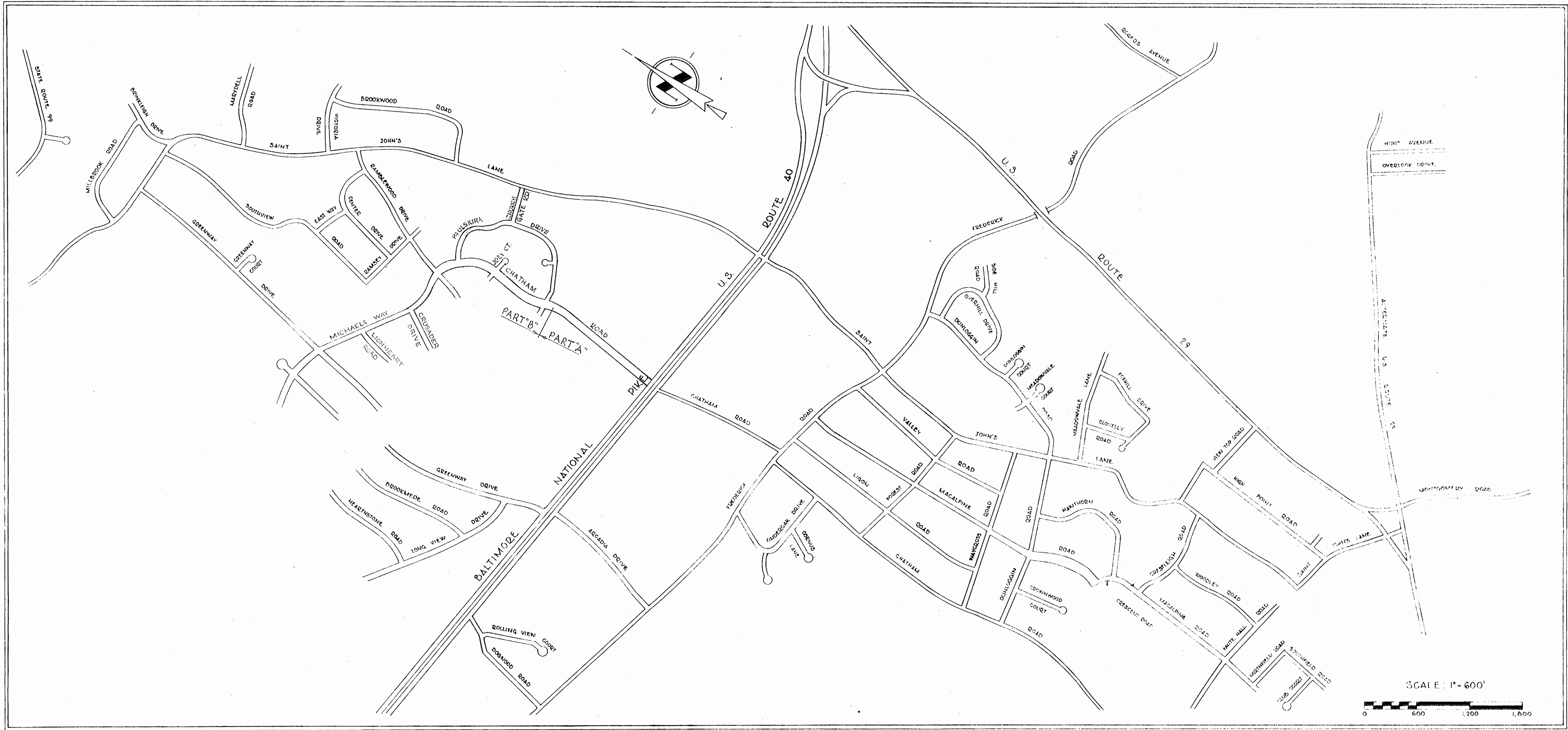


130660000

130660000



**CONTRACT 101 W**  
**WATER MAIN EXTENSIONS**  
**HOWARD COUNTY METROPOLITAN COMMISSION**  
**ELLICOTT CITY SUB-DISTRICT**

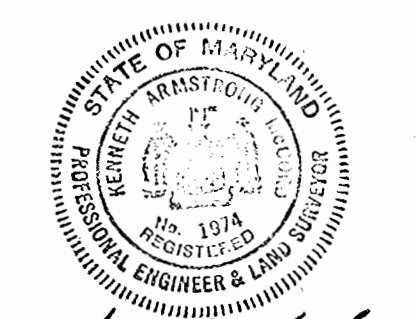
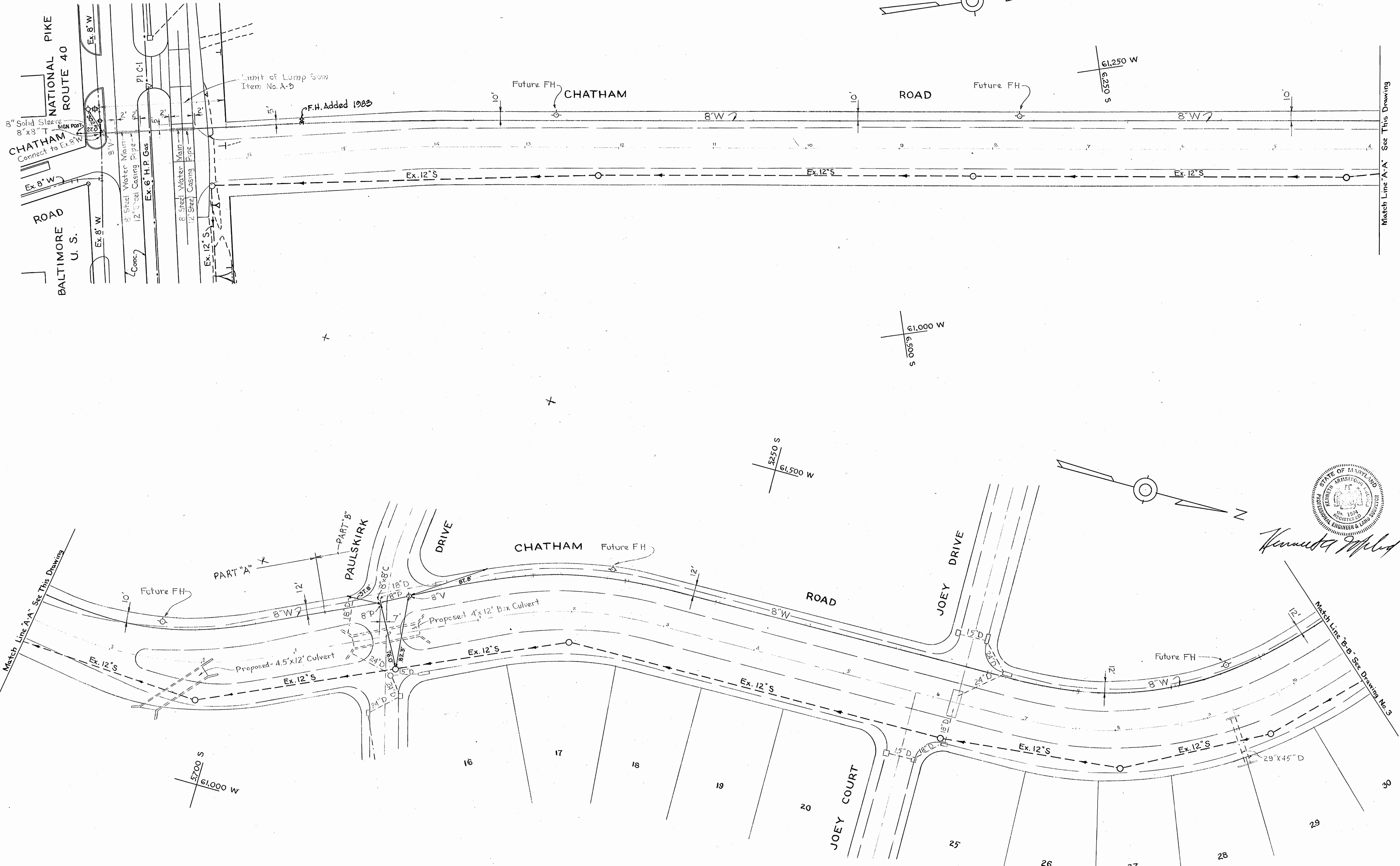


*Handwritten signature*

Contract No. 101 W

WHITMAN, REQUARDT & ASSOCIATES ENGINEERS 1304 ST. PAUL ST. BALTIMORE, MARYLAND	HOWARD COUNTY METROPOLITAN COMMISSION 30 JULY 1965 <small>DATE</small> <i>W O Folbert</i> <small>CHIEF ENGINEER</small>	CONTRACT NO. 101 W	LOCATION MAP	ELLICOTT CITY SUB-DISTRICT	DRAWING NO. 1 OF 4	SCALE AS SHOWN
---	---	--------------------	--------------	----------------------------	--------------------	----------------

WS 101W/1

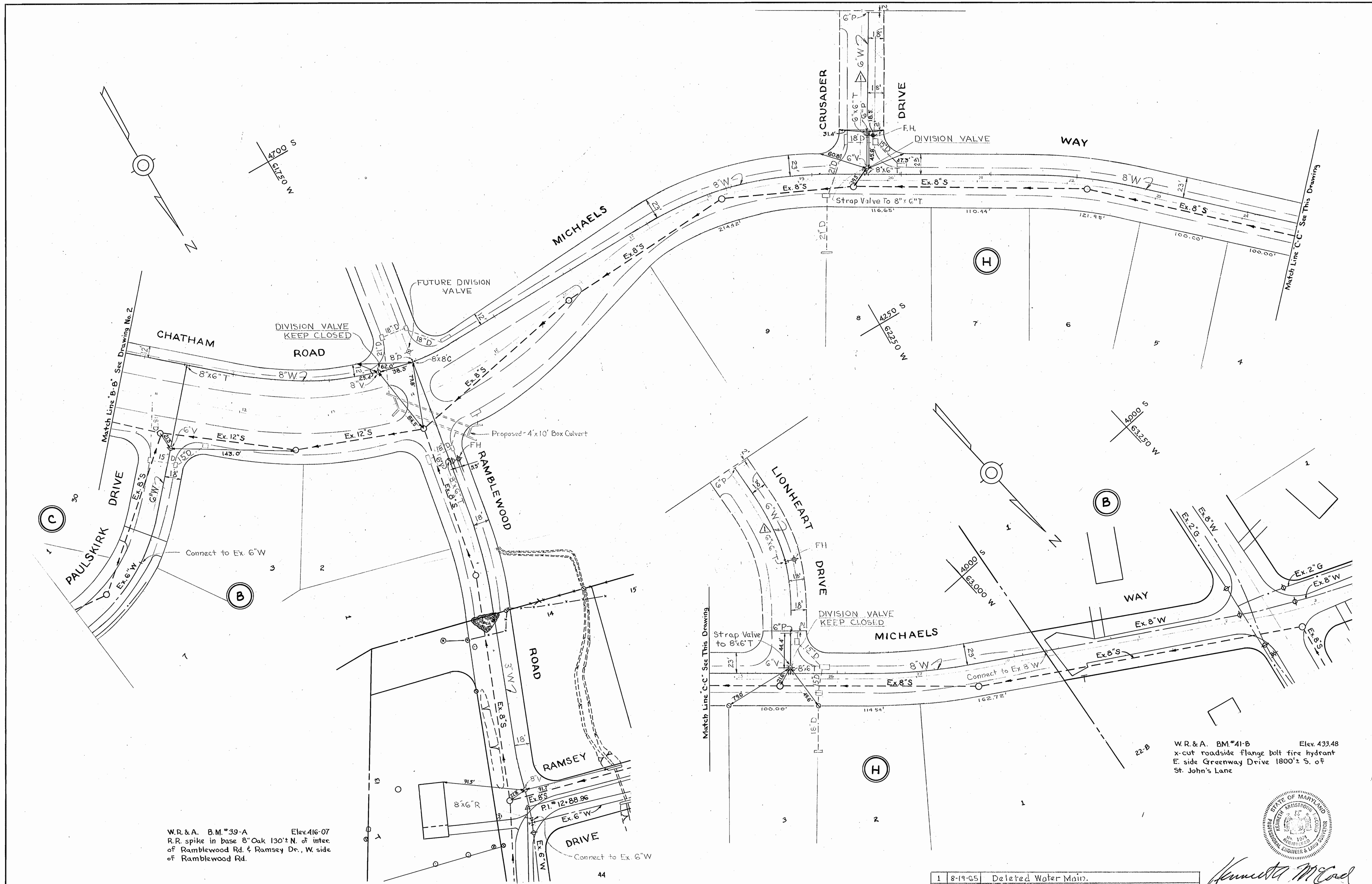


*Kenneth M. Myles*

WHITMAN, REQUARDT & ASSOCIATES ENGINEERS 1304 ST. PAUL ST. BALTIMORE, MARYLAND	HOWARD COUNTY METROPOLITAN COMMISSION 30 JULY 1965 <i>W. O. Libbert</i> CHIEF ENGINEER	CONTRACT NO. 101W	PLAN OF WATER MAINS	ELLICOTT CITY SUB-DISTRICT	DRAWING NO. 2 OF 4	SCALE 1"=50' 5,678 SW41
---	---	-------------------	------------------------	----------------------------	--------------------------	-------------------------------

W. O. 5129-2 Contract No. 101W F.H. Added 1983 'AS BUILT 15 DEC. 65

WS 101W/2



WHITMAN, REQUARDT & ASSOCIATES  
 ENGINEERS  
 1304 ST. PAUL ST.  
 BALTIMORE, MARYLAND

HOWARD COUNTY METROPOLITAN COMMISSION  
 30 JULY 1965  
 DATE *W. O. Sobat*  
 CHIEF ENGINEER

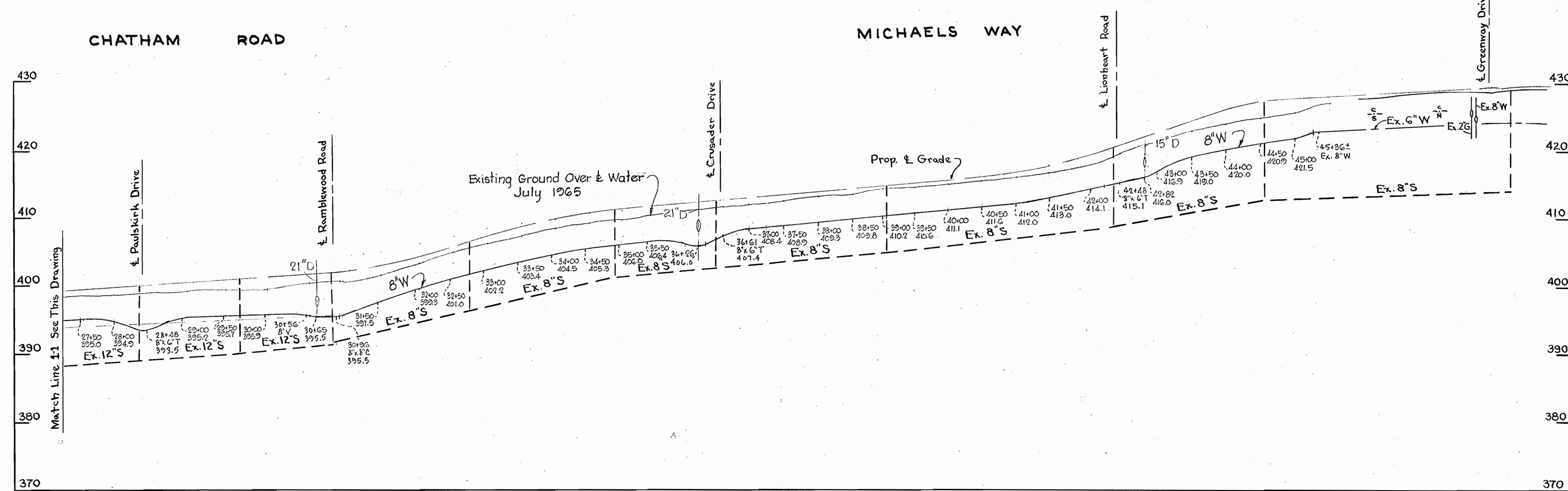
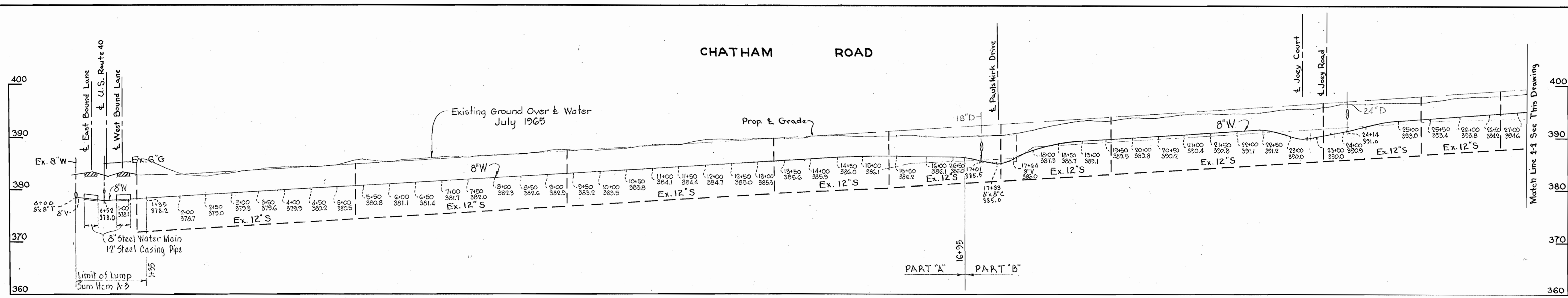
CONTRACT NO. 101 W

PLAN OF  
WATER MAINS

ELLCOTT CITY SUB-DISTRICT

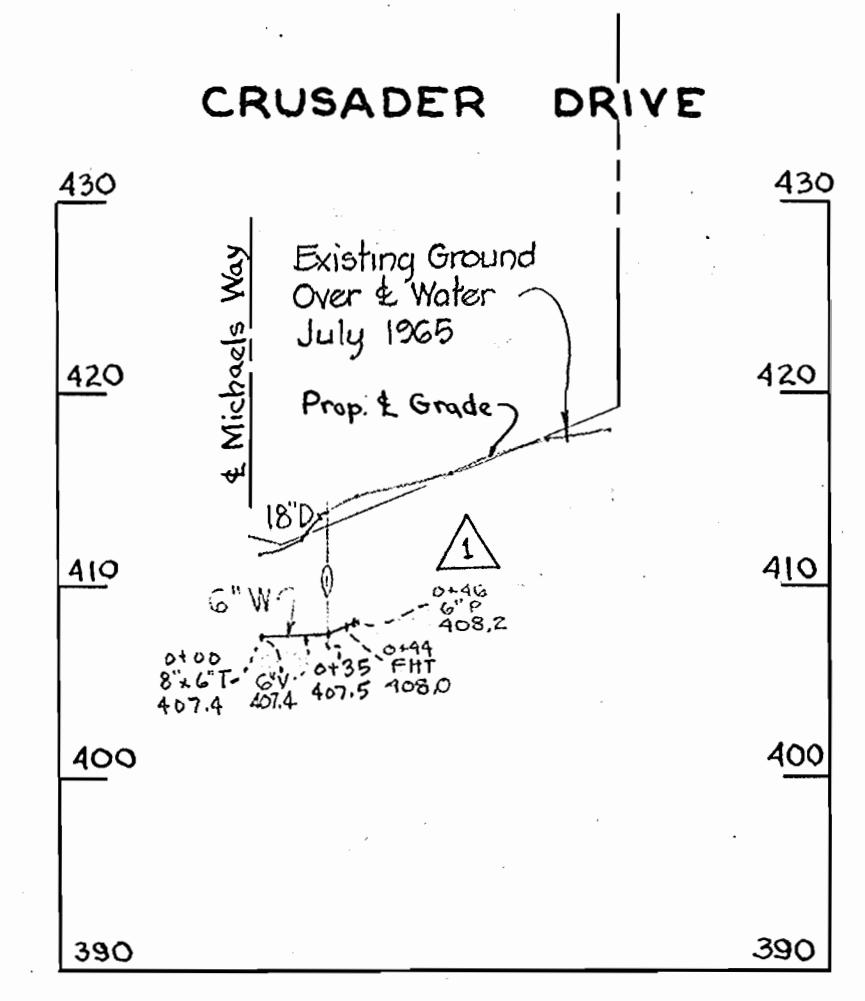
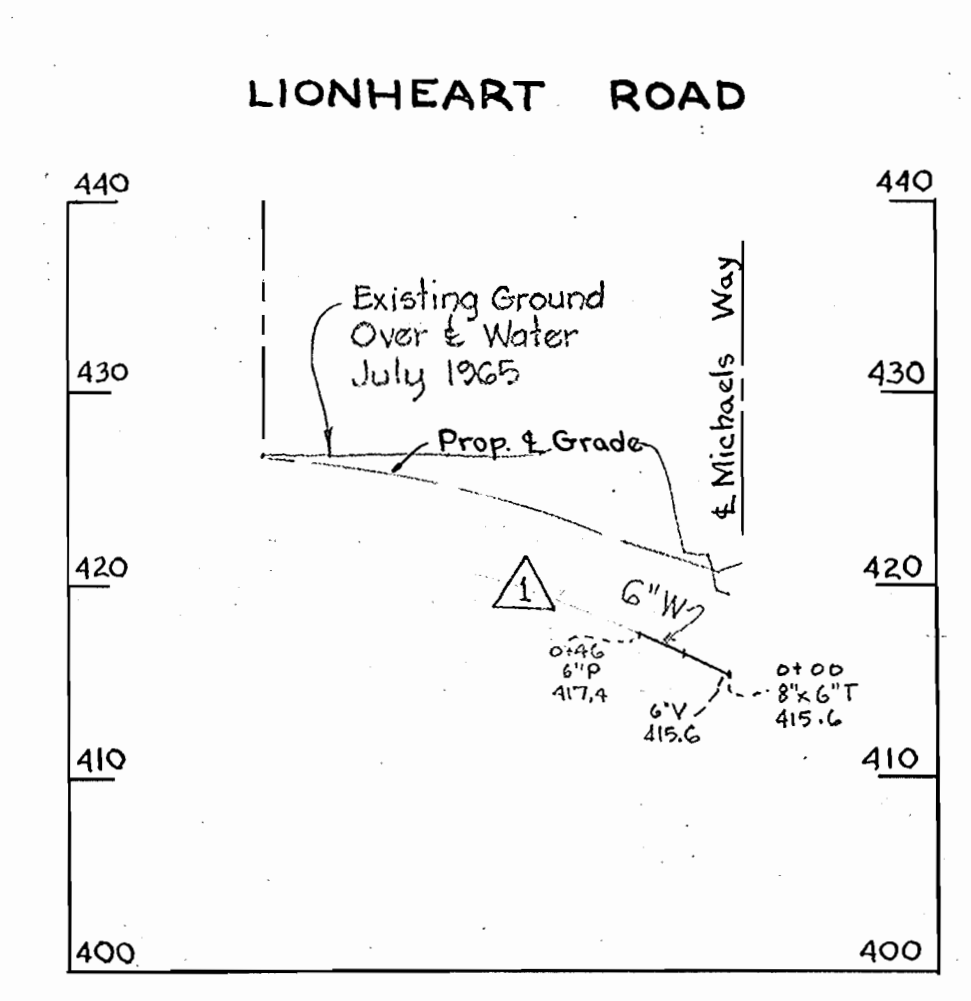
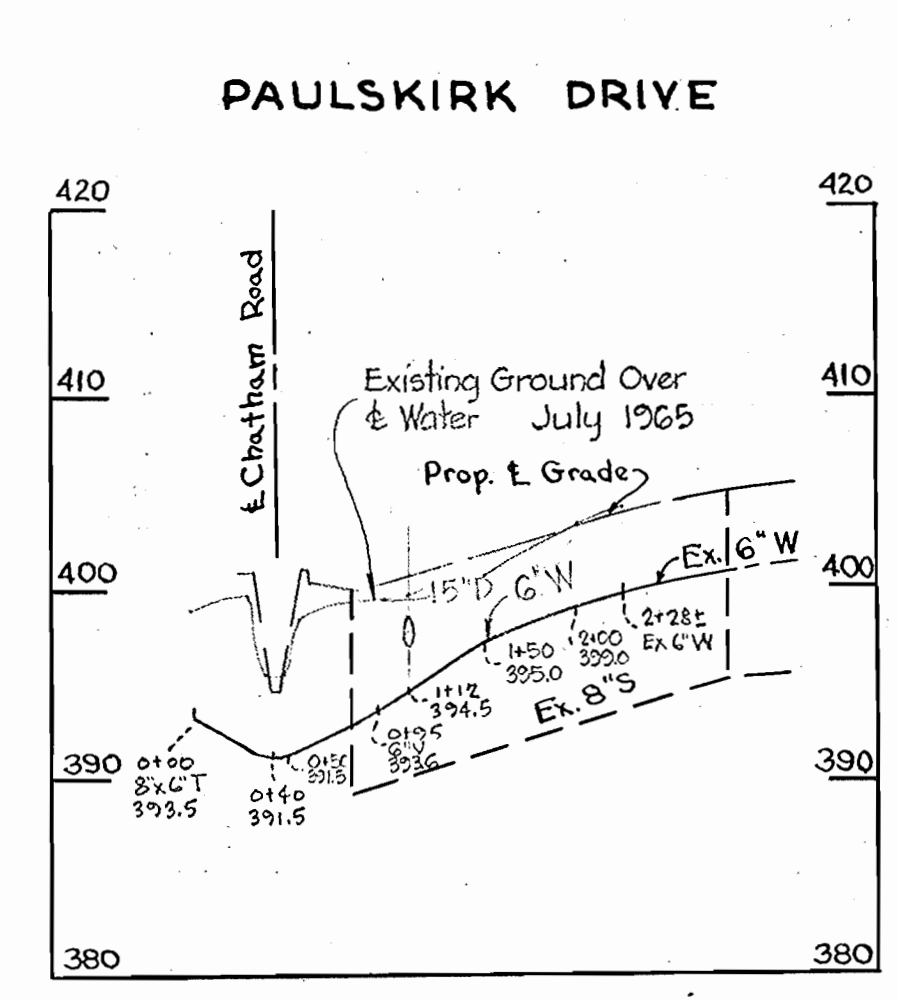
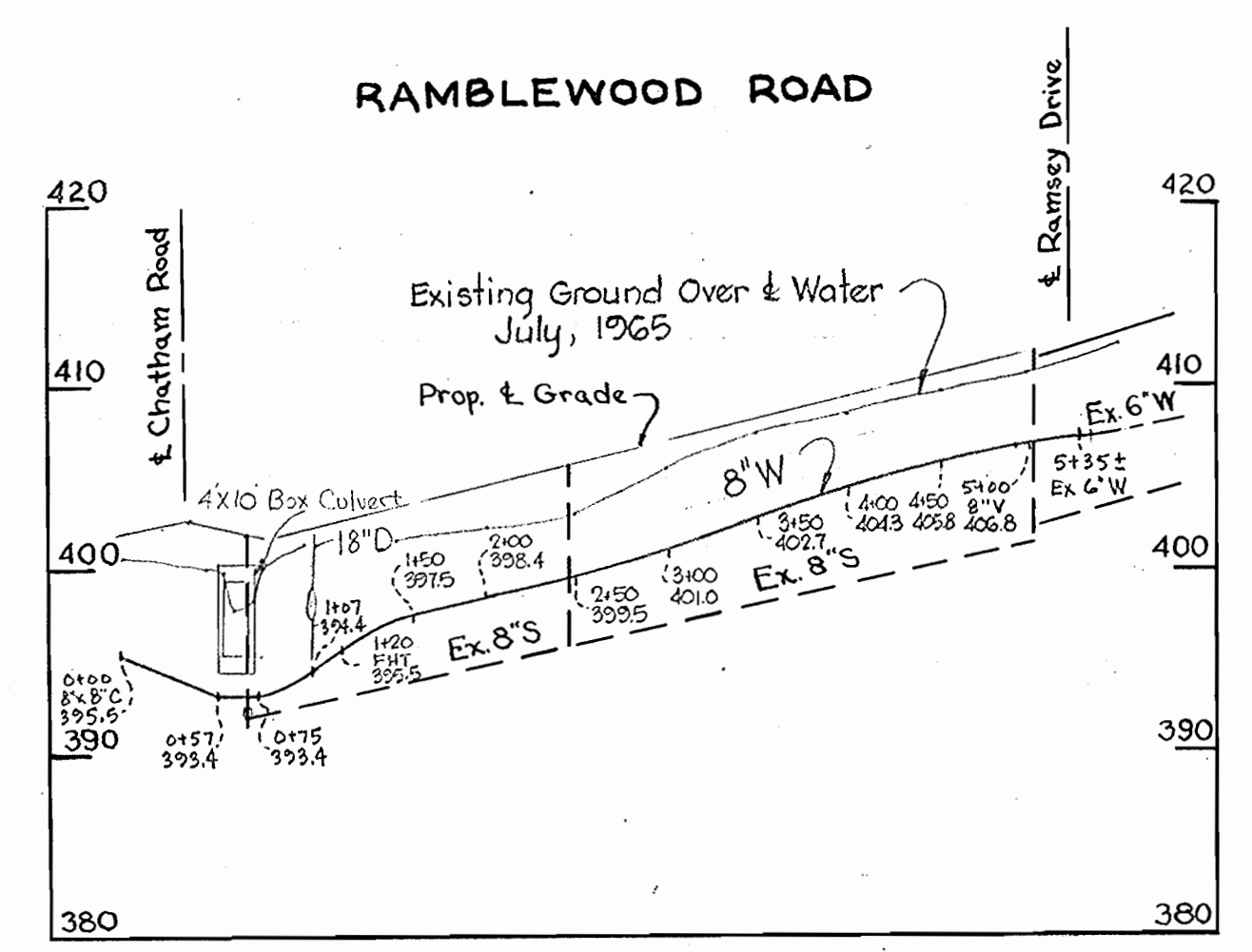
DRAWING NO. 3 OF 4  
 SCALE 1"=50'  
4.5 SW 42  
53W41, 4 SW 43

WS 101 W/3



**GENERAL NOTES**

1. Approximate location of existing mains are shown. The Contractor shall take all necessary precautions to protect existing mains and services and maintain uninterrupted supply. Any damage incurred shall be repaired immediately.
2. All pipe elevations shown are invert elevations.
3. The Contractor shall locate existing utilities a minimum of two weeks in advance of construction operations in vicinity of utilities.
4. For all standard details see Standards bound in Specifications.
5. All water mains to be C.I.P. Class 22 and have a minimum of 3 1/2' cover.
6. Block all fittings with concrete, see standard details bound in specifications.
7. Bury line elevation on fire hydrant shall be set the same as edge of paving or as directed by the Engineer in the field.
8. Buttress Fire Hydrants with concrete; provide copper pipe at weep holes as required for positive drainage. For Buttress dimensions see standard detail W-8 Buttress for Caps.



No	Date	Revision
1	8-19-65	Removed Water Main



*Kenneth G. Melos*  
Contract No. 101 W

<b>WHITMAN, REQUARDT &amp; ASSOCIATES</b> ENGINEERS 1304 ST. PAUL ST. BALTIMORE, MARYLAND	<b>HOWARD COUNTY METROPOLITAN COMMISSION</b> 30 JULY 1965 <i>W O Gilbert</i> CHIEF ENGINEER	<b>CONTRACT NO. 101 W</b>	<b>PROFILES OF WATER MAIN EXTENSIONS</b>	<b>ELLCOTT CITY SUB-DISTRICT</b>	<b>DRAWING NO. 4 OF 4</b>	<b>SCALE H-1"=100' V-1"=10'</b>
--	--	---------------------------	--	----------------------------------	---------------------------	---------------------------------

W. O. 5129-2

AS BUILT 15 DEC. '65

WS 101 W/14