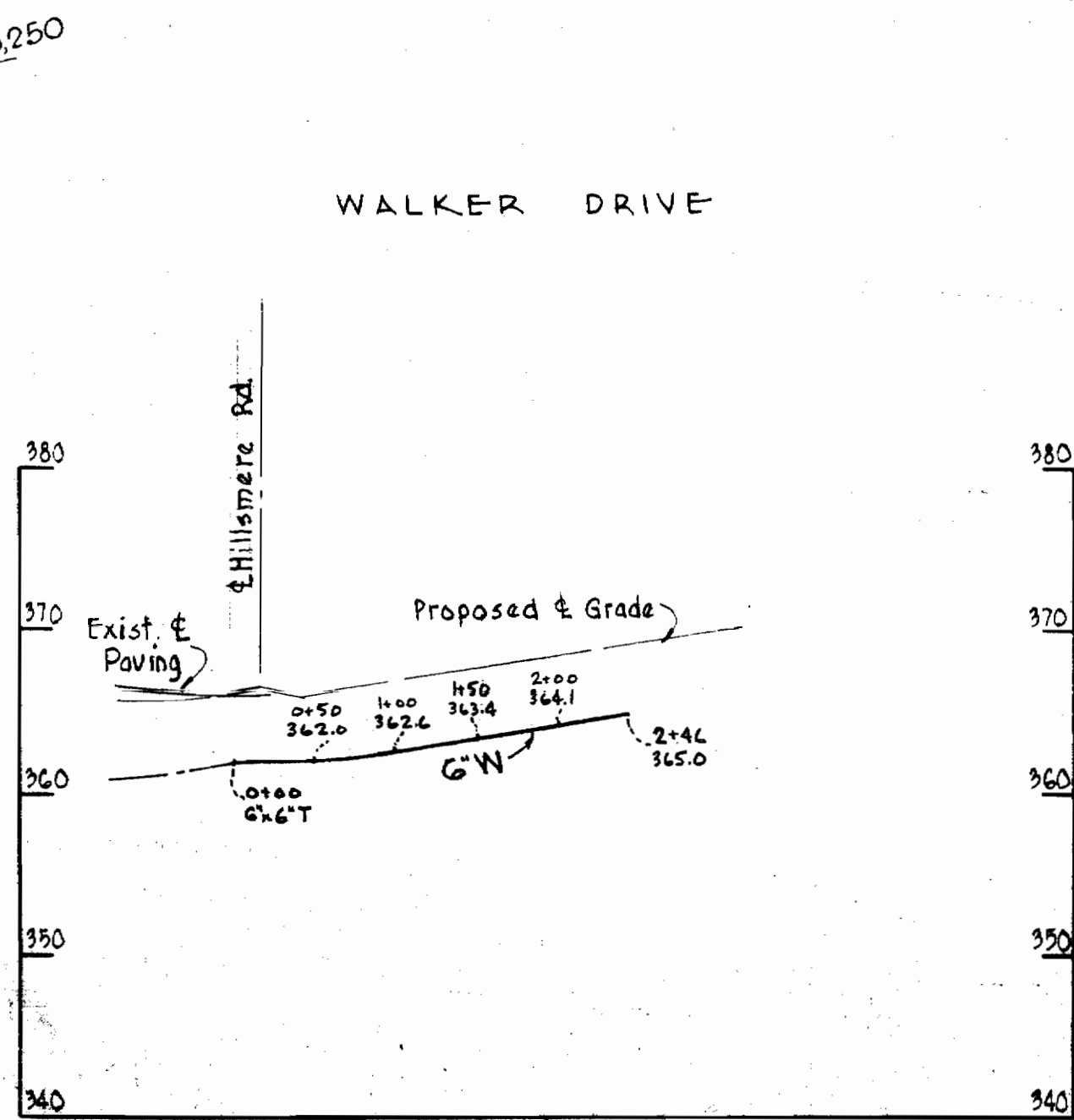


W. 2 & A. B.M. #51-L Elev. 370.70
 R.R. spike in base of G&E pole #68947, N. side Frederick Road
 400' W. of Int. of Dogwood and Frederick Roads.

PLAN
 Scale 1"=50'



PROFILE
 Scale Vert. 1"=10'
 Horiz. 1"=100'

GENERAL NOTES

1. Approximate location of existing mains are shown. The Contractor shall take all necessary precautions to protect the existing mains and services and maintain uninterrupted supply. Any damage incurred shall be repaired immediately.
2. All pipe elevations shown are invert elevation.
3. The Contractor shall locate existing utilities a minimum of two weeks in advance of construction operations in vicinity of utilities.
4. For all standard details, see standards bound in specifications.
5. Block all fittings with concrete, see standard details bound in specifications.
6. All water mains to be CIP Class 20 and have a minimum of 35' cover.

Glenbrook, Section 2
 Contract 93W

WHITMAN, REQUARDT & ASSOCIATES ENGINEERS 1304 ST. PAUL ST. BALTIMORE, MARYLAND	HOWARD COUNTY METROPOLITAN COMMISSION DATE _____ CHIEF ENGINEER _____	CONTRACT NO. <u>93-W</u>	PLAN & PROFILE OF WATER MAINS	ELLICOTT CITY SUB-DISTRICT	DRAWING NO. <u>1</u> OF <u>1</u>	SCALE AS SHOWN	33W44 95W44
					25 NOV. 1964		