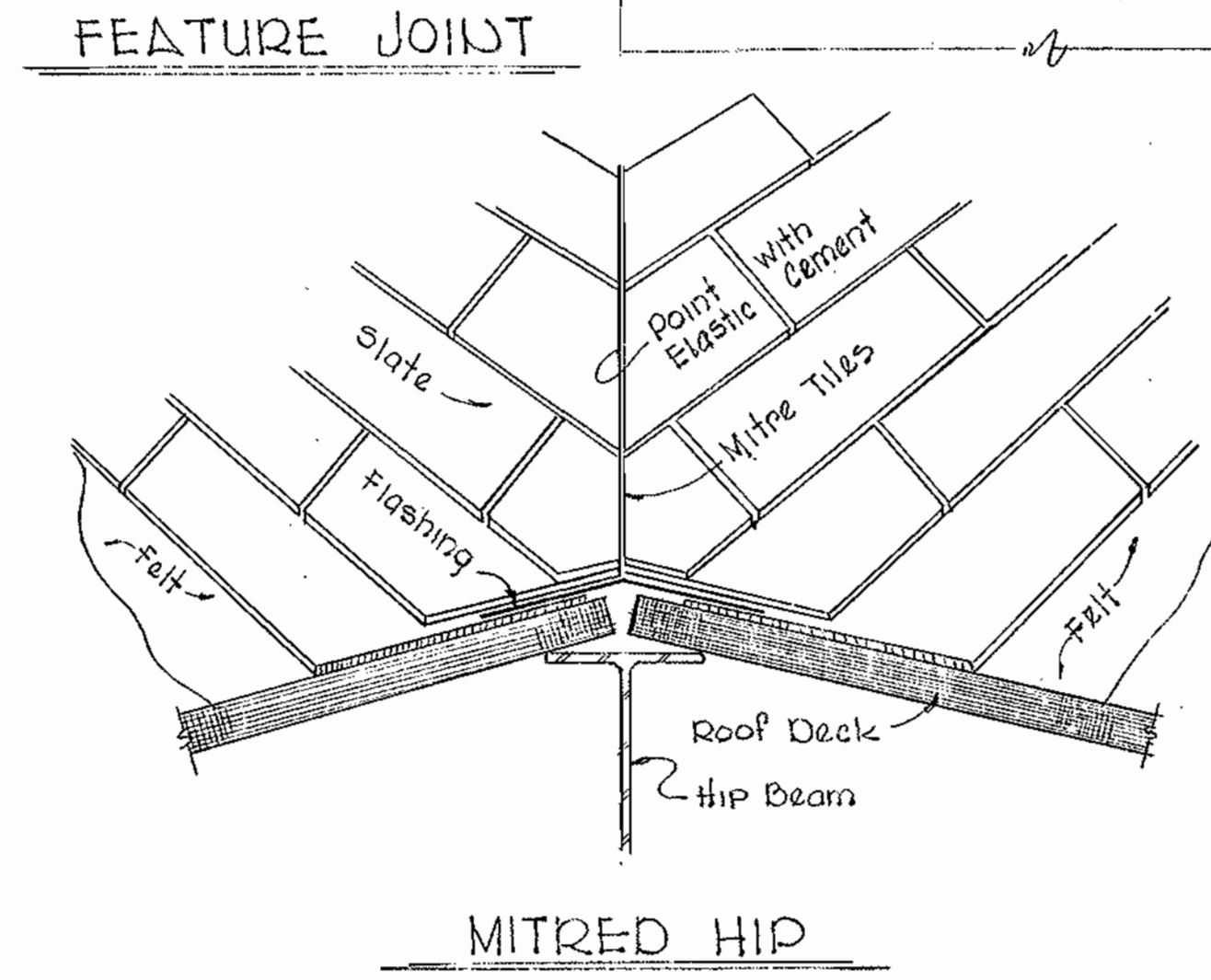
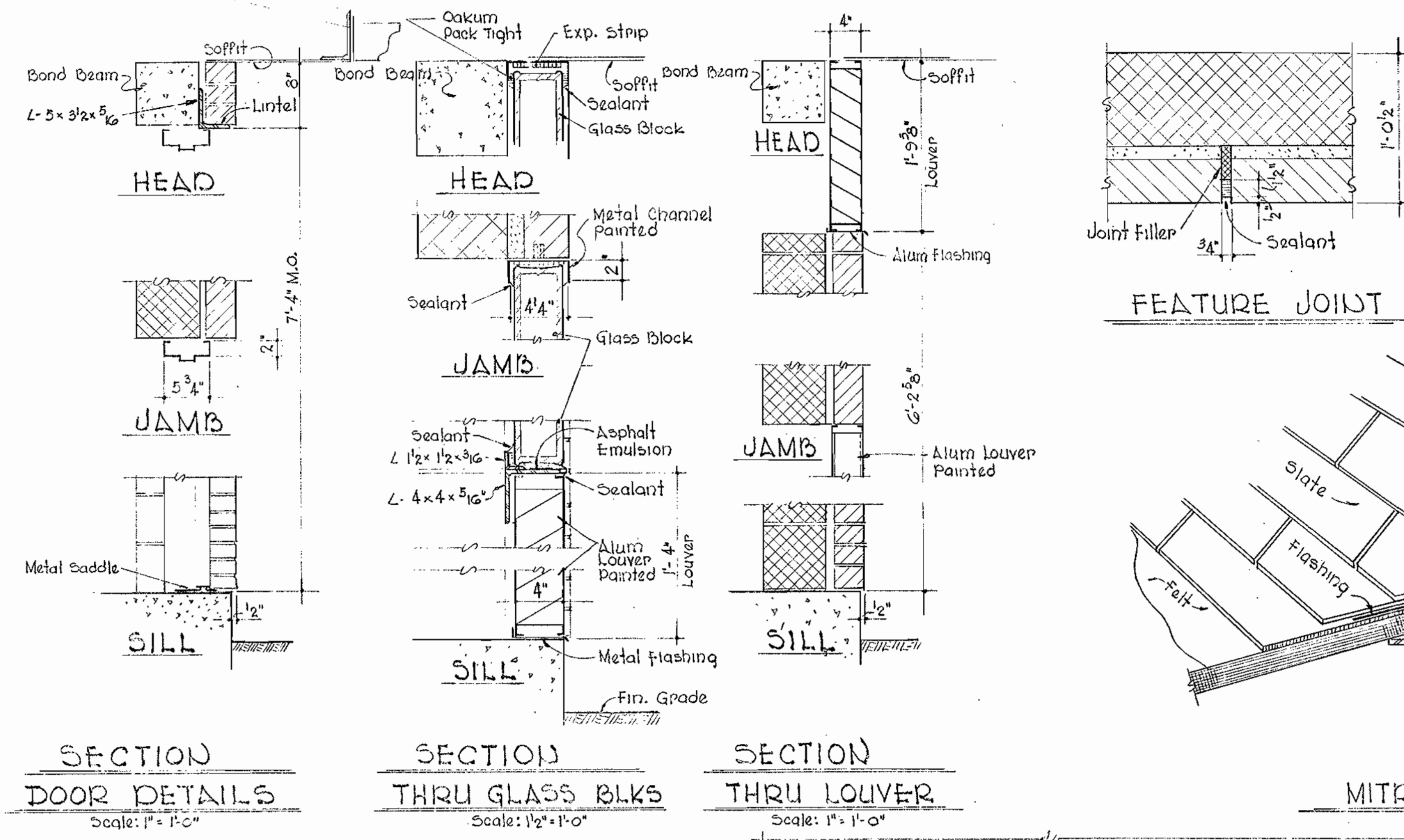


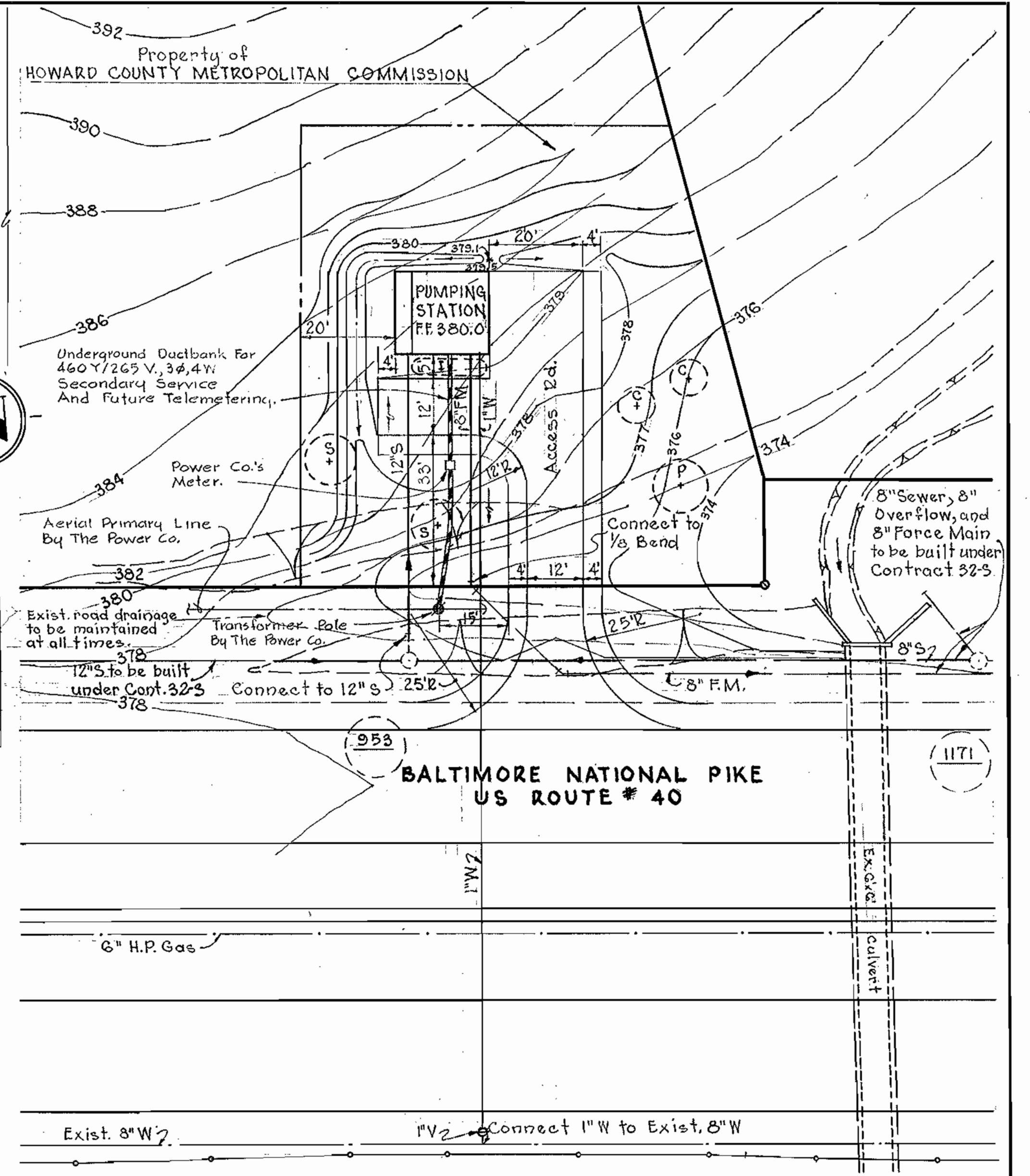
ELEVATIONS 3/16" = 1'-0"



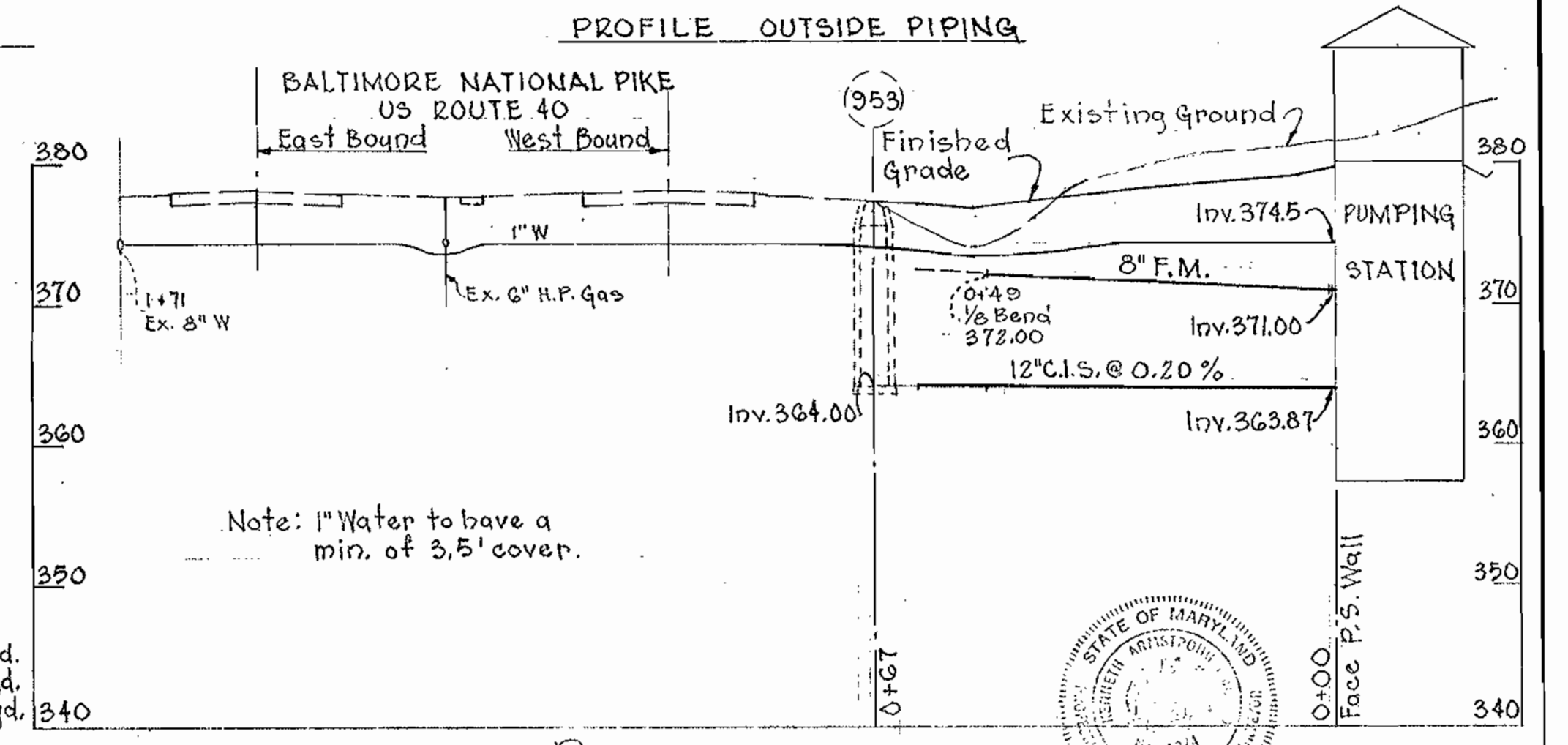
PLANT LIST

SYM.	BOTANICAL & COMMON NAME	QUAN.	SIZE
C	Crataegus Cordata Washington Hawthorn	2	6'-8"
I	Ilex glabra Inkberry	4	2" x 2 1/2"
P	Platanus Occidentalis Plain Tree	1	3" x 3 1/2" cal
S	Liquidamber Stryciflua Sweet Gum	2	2" - 2 1/2" cal

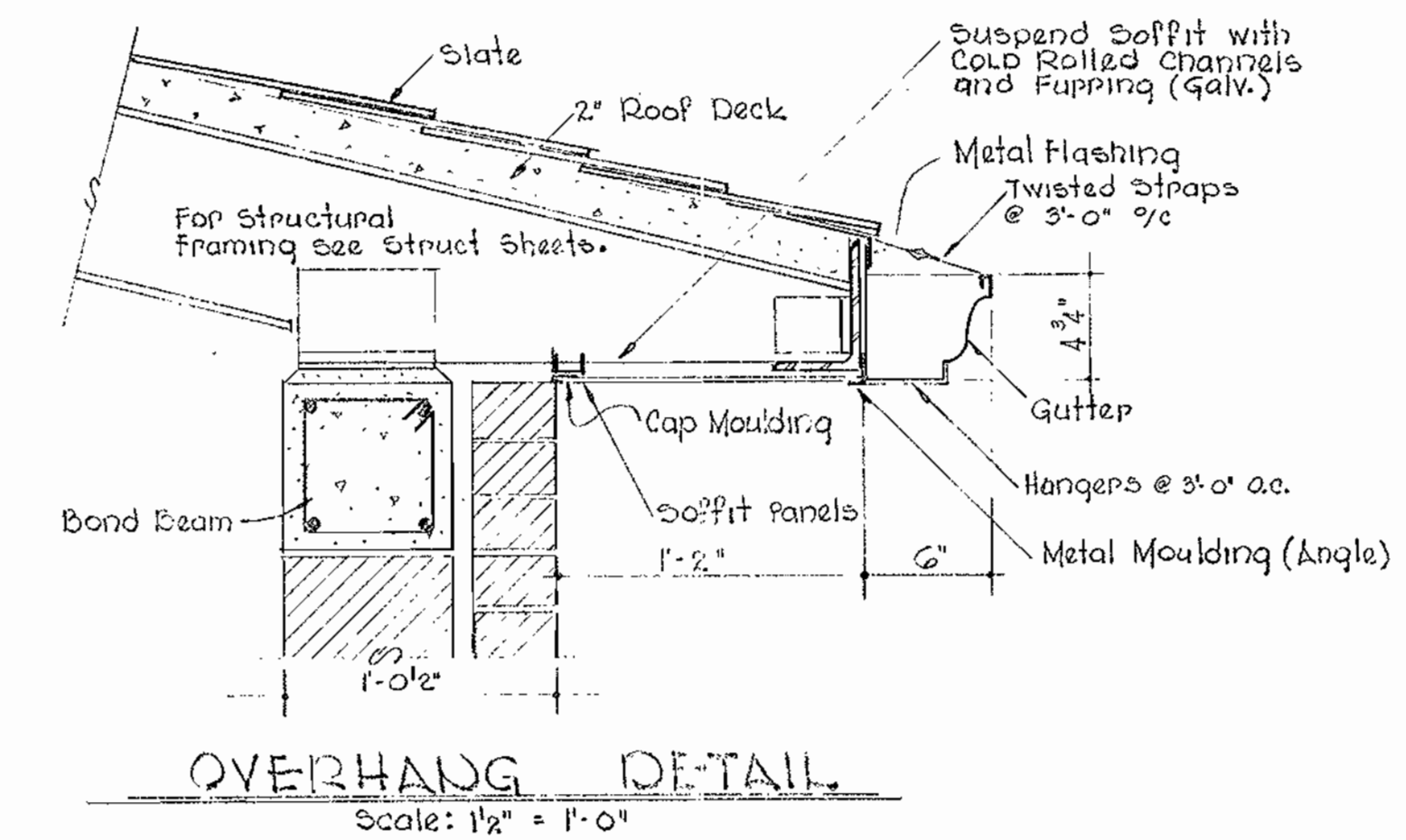
Note: All trees to be balled & burlapped.



SITE PLAN Scale: 1" = 20'



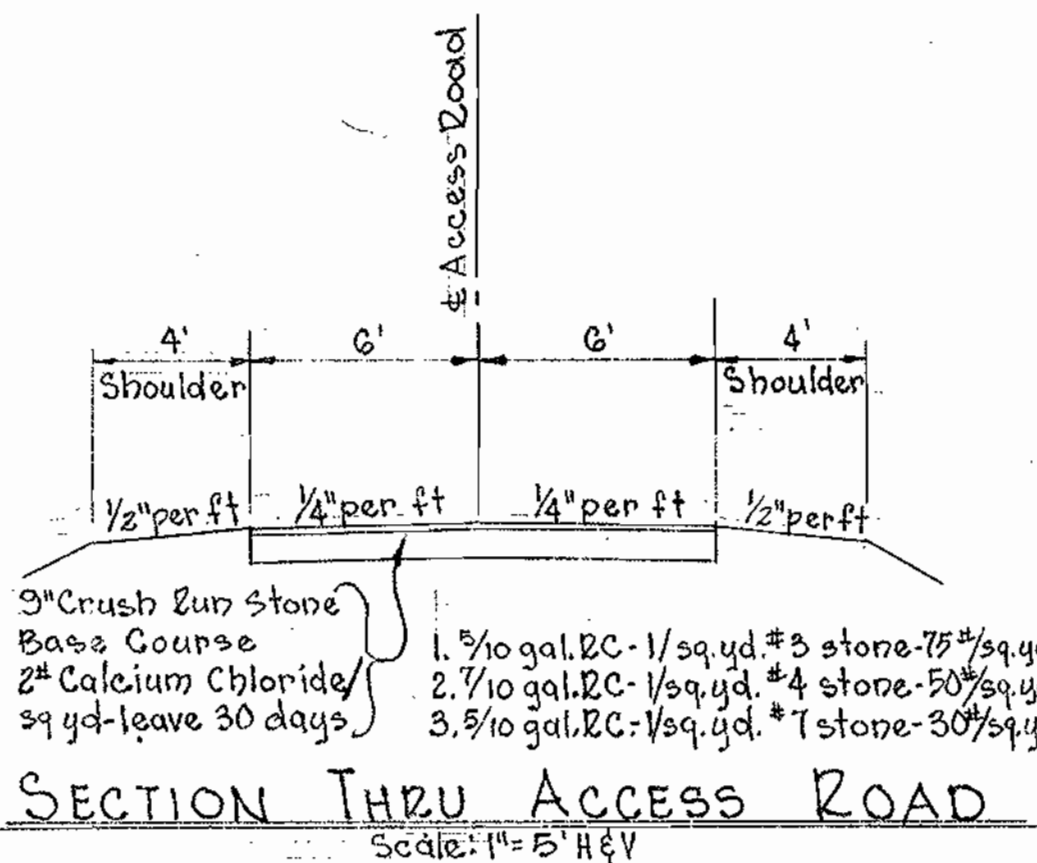
PROFILE Scale: H: 1" = 20', V: 1" = 10'



OVERHANG DETAIL Scale: 1/2" = 1'-0"

GENERAL NOTES

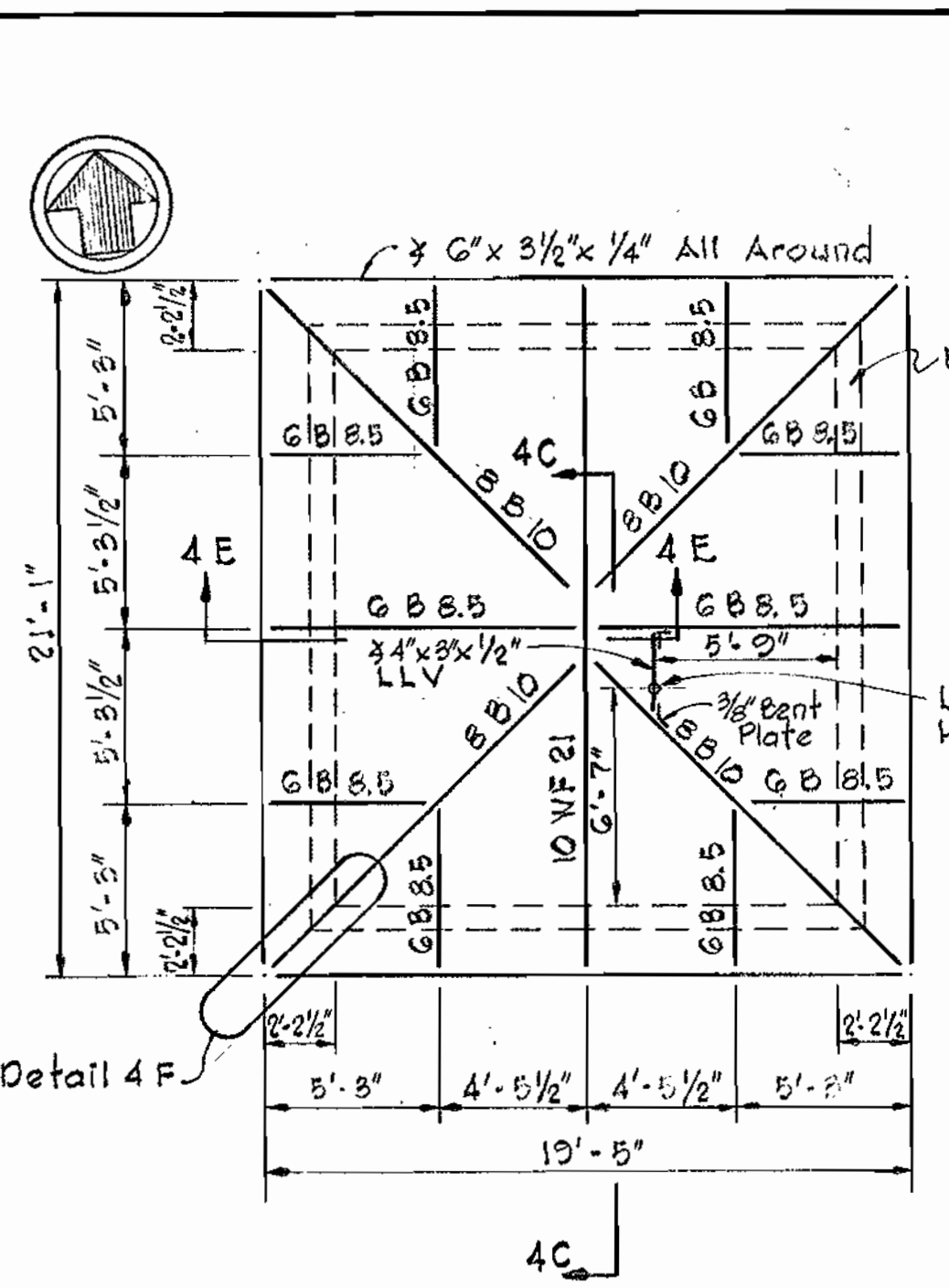
1. Approximate location of existing mains are shown. The contractor shall take all necessary precautions to protect the existing mains and services and maintain uninterrupted supply; any damage incurred shall be repaired immediately.
2. All pipe elevations shown are invert elevations.
3. The contractor shall locate existing utilities a minimum of two weeks in advance of construction operations in vicinity of utilities.
4. For all standard details, see Standards bound in specifications.



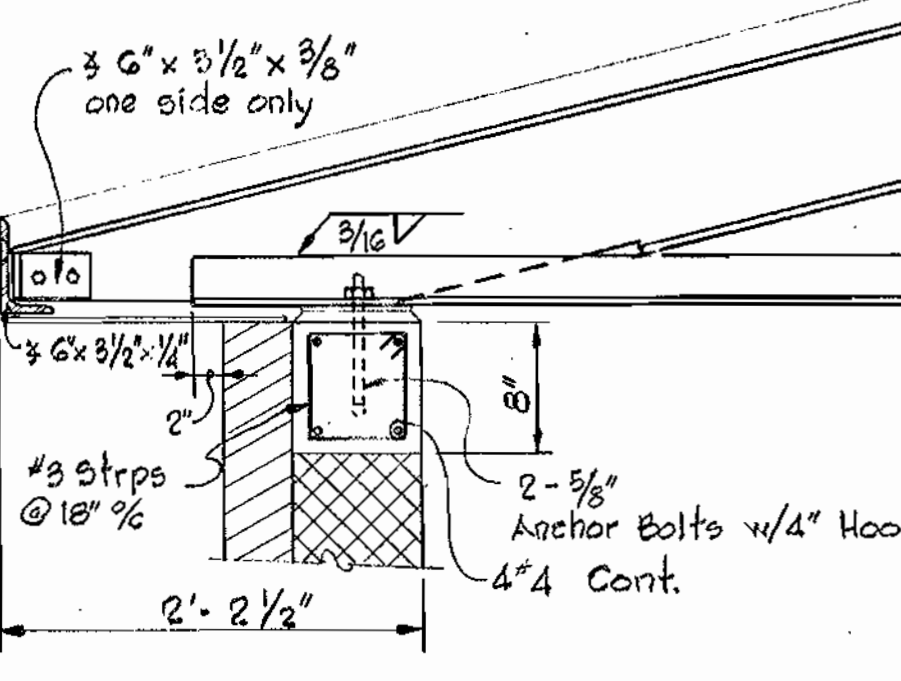
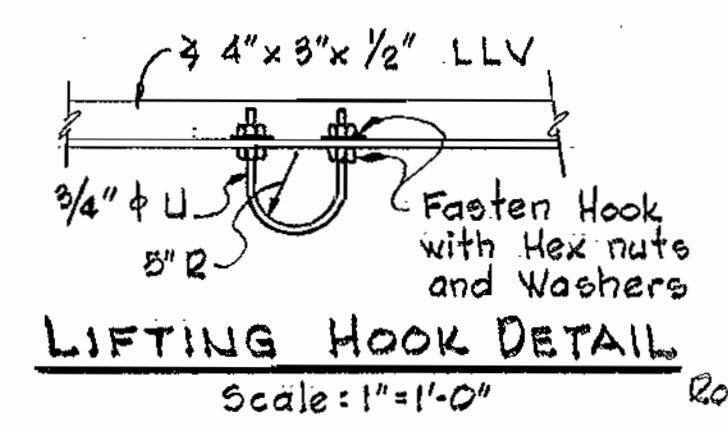
SECTION THRU ACCESS ROAD Scale: 1" = 5' H & V

WHITMAN, REQUARDT & ASSOCIATES ENGINEERS 1304 ST. PAUL ST. BALTIMORE, MARYLAND	HOWARD COUNTY METROPOLITAN COMMISSION Jan. 20, 1965 DATE <i>W. O. Libbat</i> CHIEF ENGINEER	CONTRACT NO. 91-S	ARCHITECTURAL ELEVATIONS, SITE PLAN & DETAILS	ELLICOTT CITY SUB-DISTRICT	DRAWING NO. 2 OF 6 SCALE AS SHOWN
---	---	-------------------	--	----------------------------	--------------------------------------

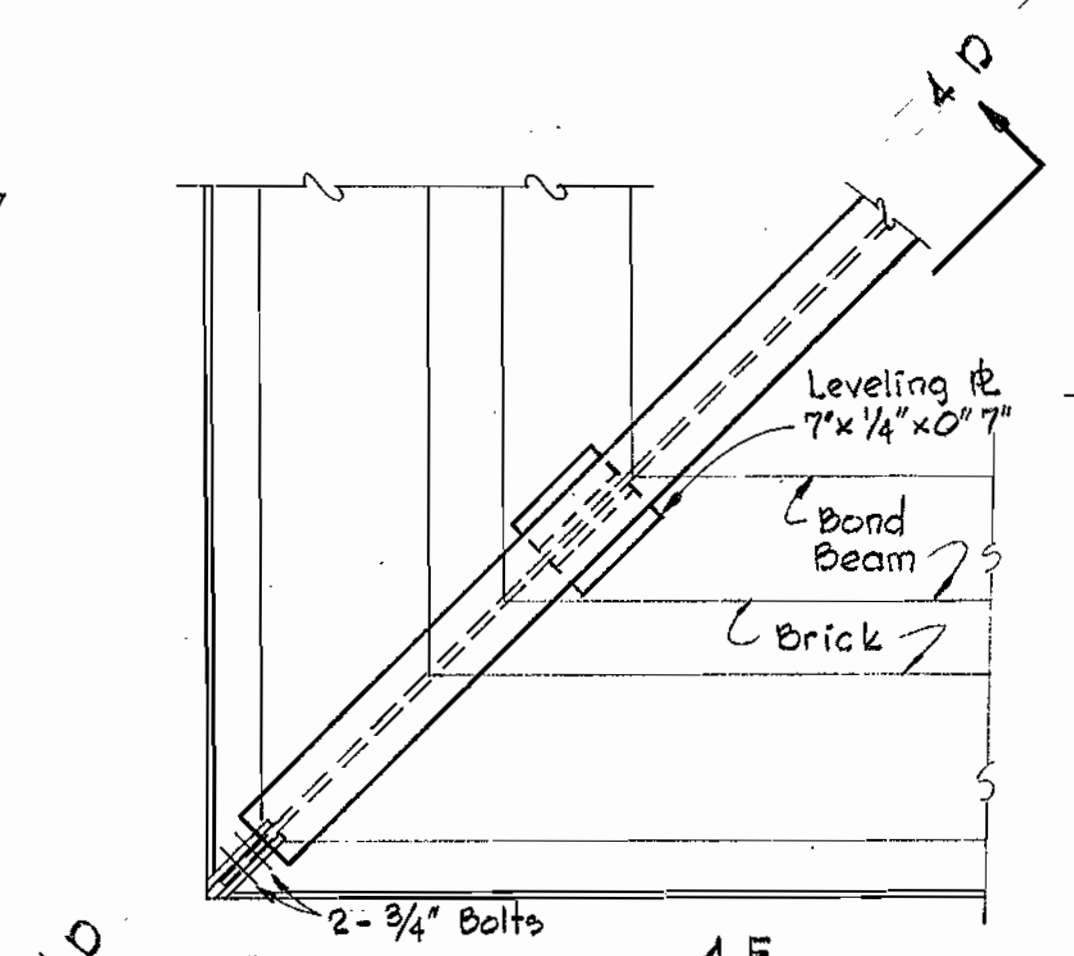
WS 91S/2



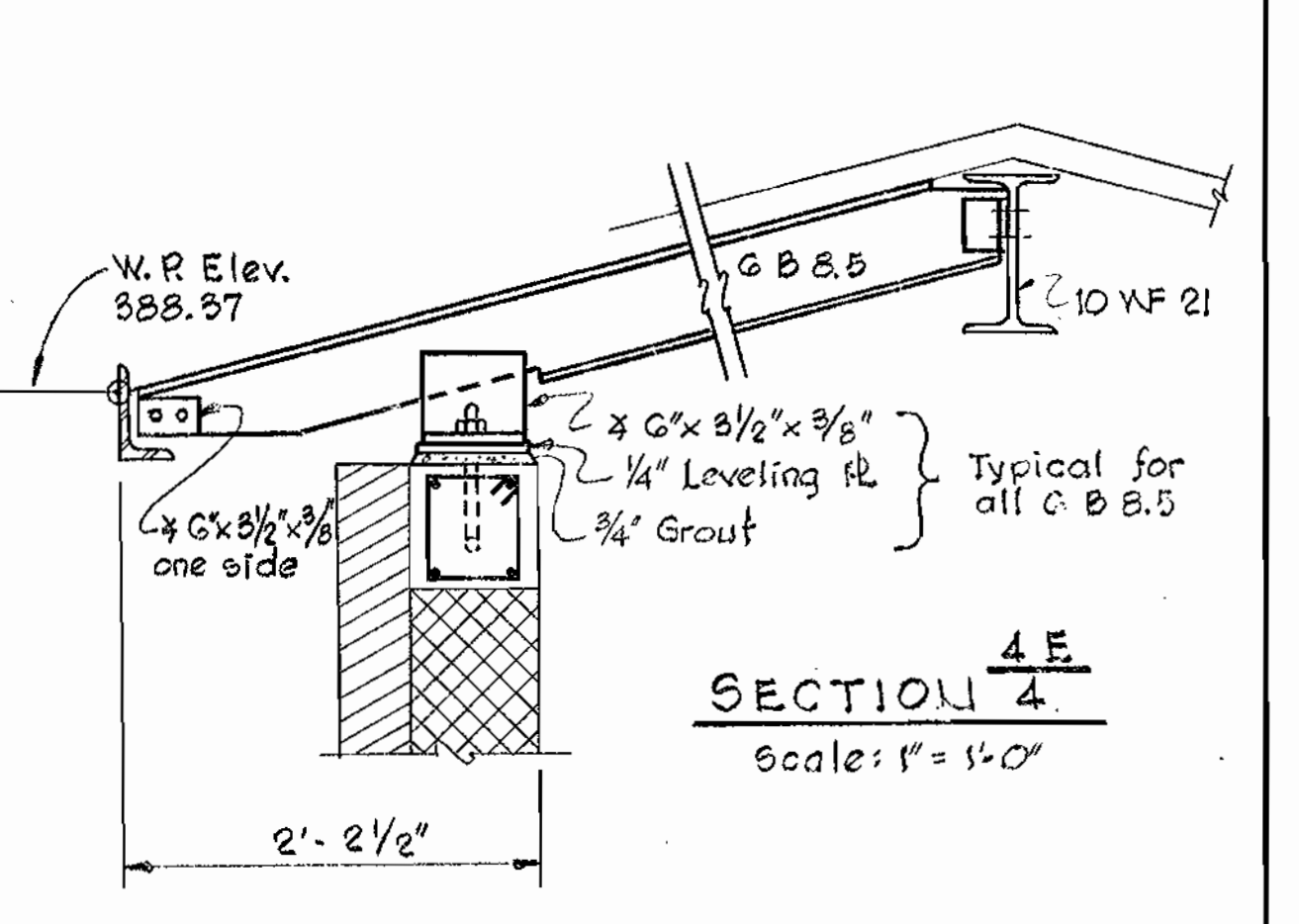
ROOF FRAMING PLAN
Scale: 3/16" = 1'-0"



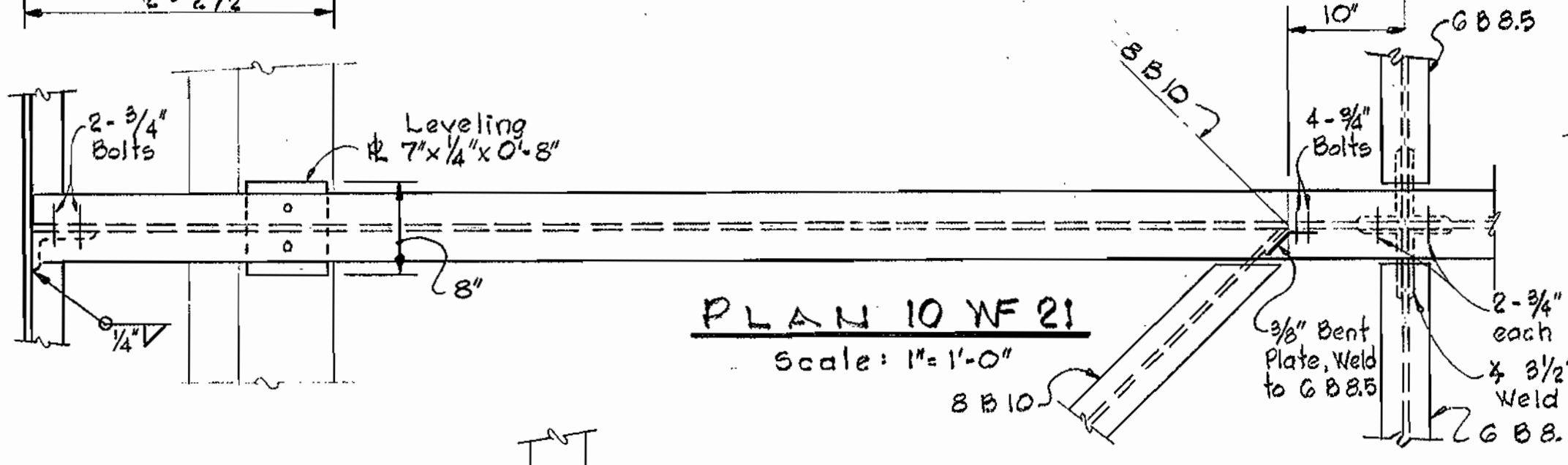
SECTION 4C
Scale: 1" = 1'-0"



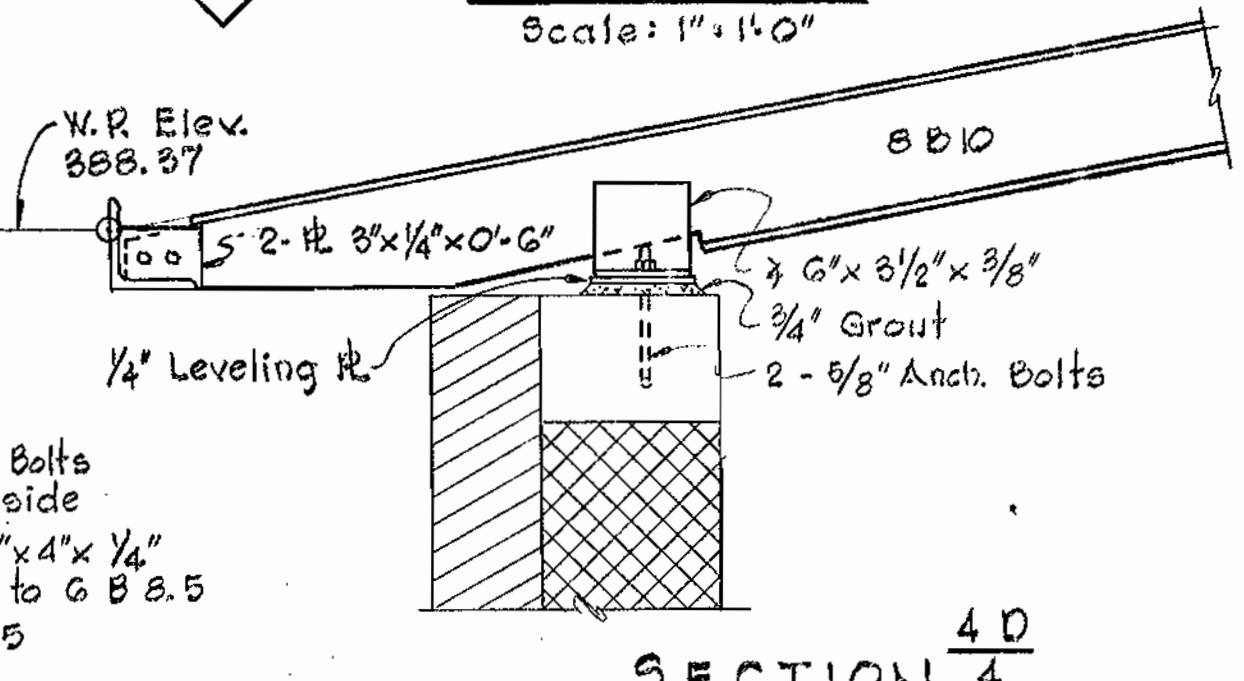
DETAIL 4F
Scale: 1" = 1'-0"



SECTION 4E
Scale: 1" = 1'-0"



PLAN 10 WF 21
Scale: 1" = 1'-0"



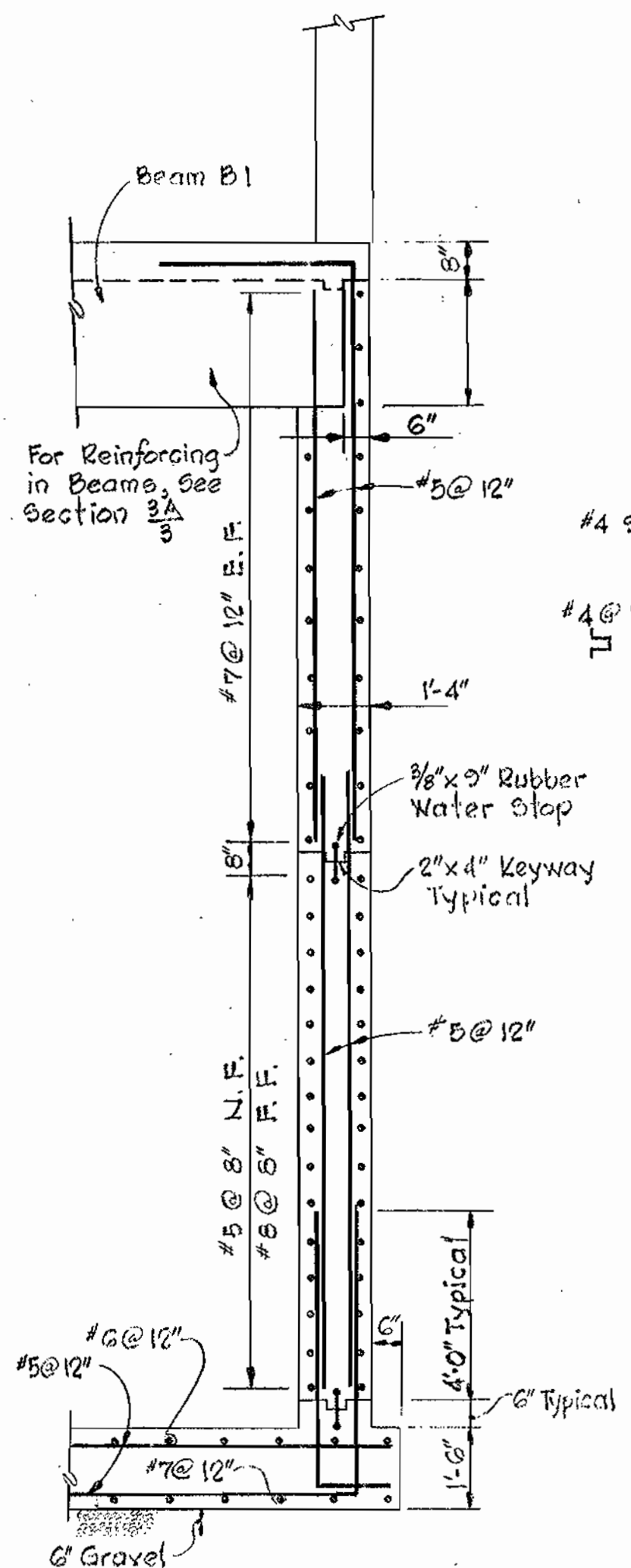
SECTION 4D
Scale: 1" = 1'-0"

STRUCTURAL STEEL NOTES

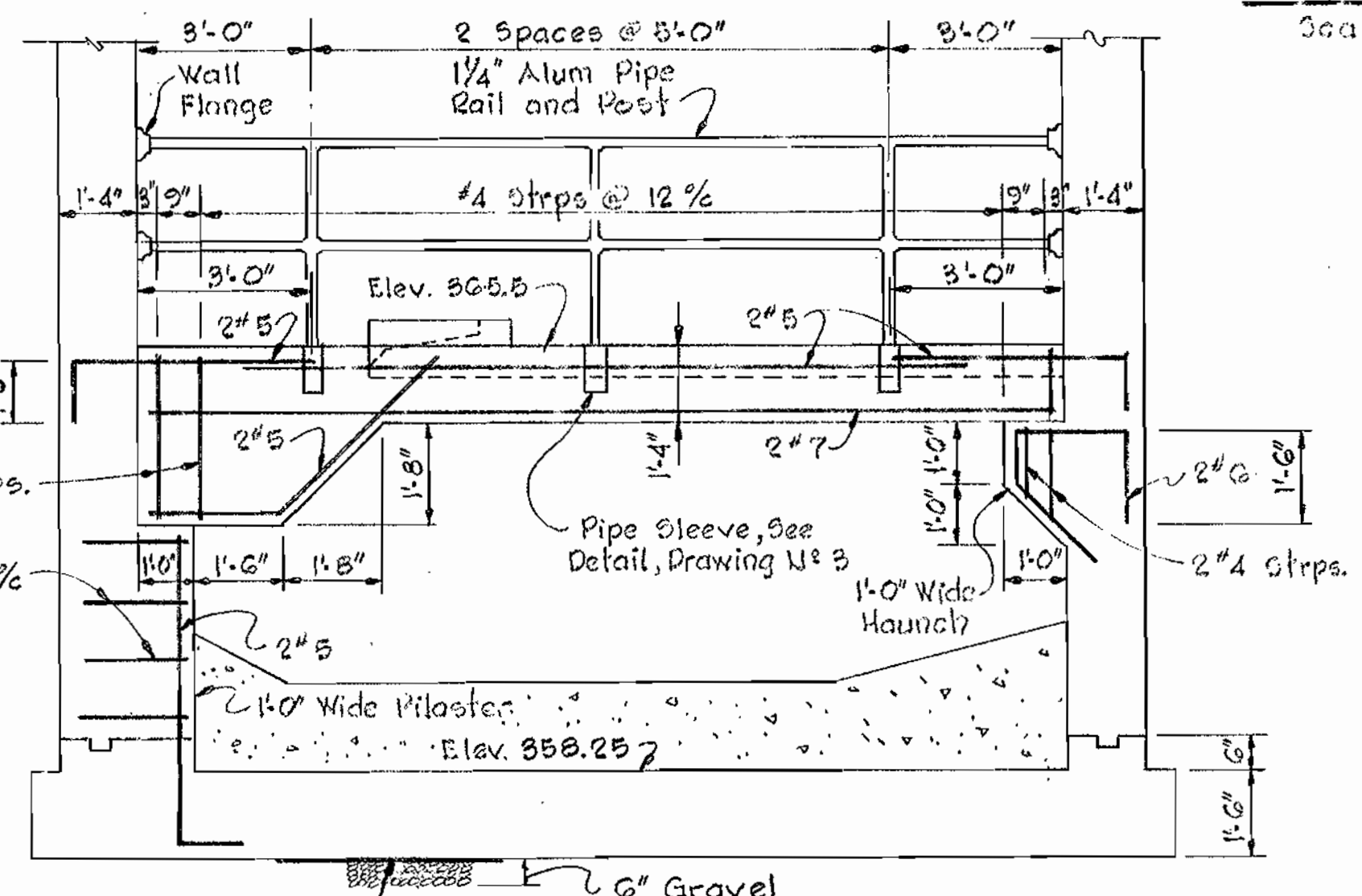
- All structural steel shall conform to A.S.T.M. Designation A-36-G2T.
- All shop connections shall be welded with A238, Class E-70 Series Electrodes. All field connections shall be made with A307 bolts.
- Except where otherwise noted on the drawings, connections of framing members shall be capable of transferring the full strength of the member using 3/4" dia. bolts. Shop side of connections may be fillet welded all around resulting in a connection of equal strength with the bolted connection.
- All structural steel is designed and shall be fabricated in accordance with the current A.I.S.C. Specifications for buildings.
- The Contractor shall submit erection plans and shop details before proceeding with fabrication.
- All structural steel shall be given one shop coat of paint. See Specifications.

CONCRETE NOTES

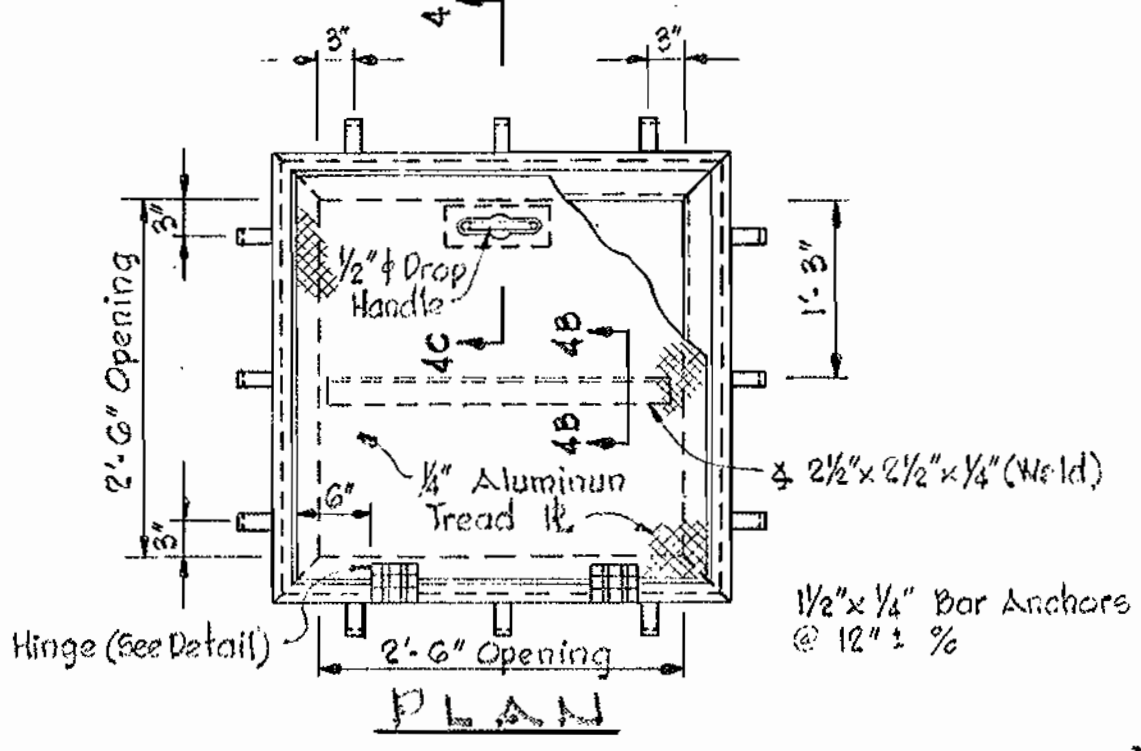
- All excavations shall be inspected and approved by the Engineer before placing any gravel or concrete.
- Any excavation below the elevation of the gravel shall be filled with compacted gravel.
- All foundations have been designed for a maximum assumed soil bearing capacity of 3000 p.s.f.
- All concrete shall have a minimum compressive strength of 3,500 p.s.i. at 28 days. See Specifications for other requirements.
- All reinforcing steel shall be intermediate grade (A.S.T.M. A-15) having deformations conforming to A.S.T.M. Specification A-305.
- All exposed concrete edges shall be chamfered 3/4" unless otherwise noted.
- Concrete walls shall be poured between indicated joints, allowing a minimum period of 3 days to elapse between adjacent pours.
- Construction joints shall be as detailed on the drawings and no additional joints shall be used, nor any omitted, except by written authorization of the Engineer.
- Reinforced concrete is designed and shall be detailed and constructed in accordance with the current A.C.I. Specification (A.C.I. 318-62).
- The Contractor shall submit shop details of reinforcing steel before proceeding with fabrication.
- All dimensions on structural drawings shall be cross checked with those on architectural drawings before proceeding with the work.
- All reinforcing bar laps shall be 50 bar diameters unless otherwise noted.
- For Mechanical and Electrical work to be incorporated in the concrete work, see Mechanical and Electrical Drawings.



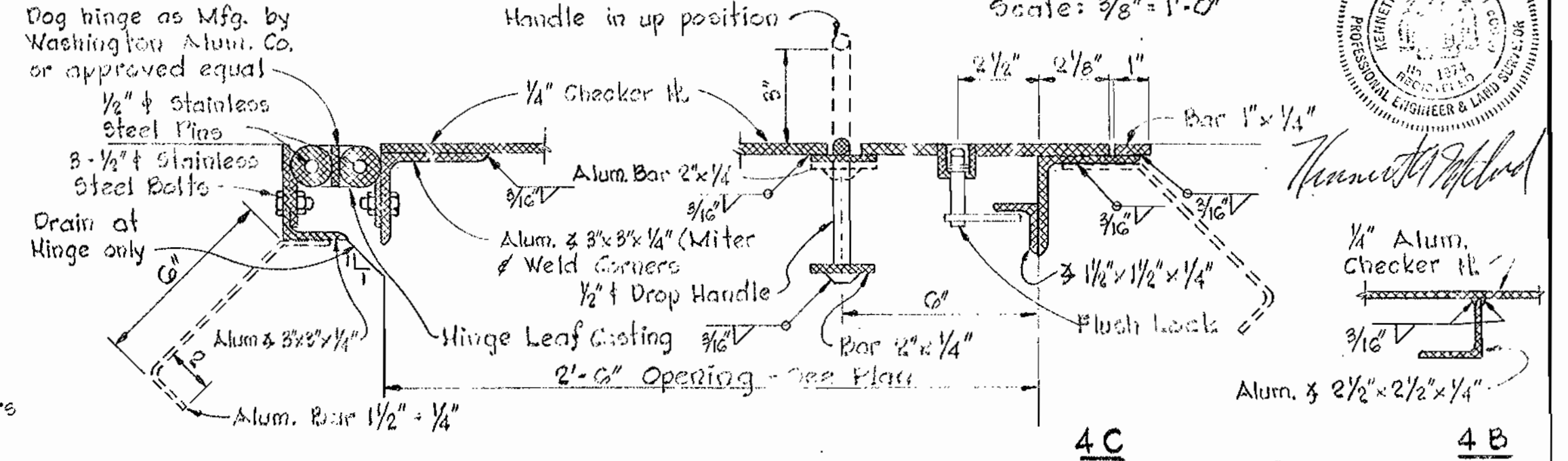
SECTION 4A
Scale: 3/8" = 1'-0"



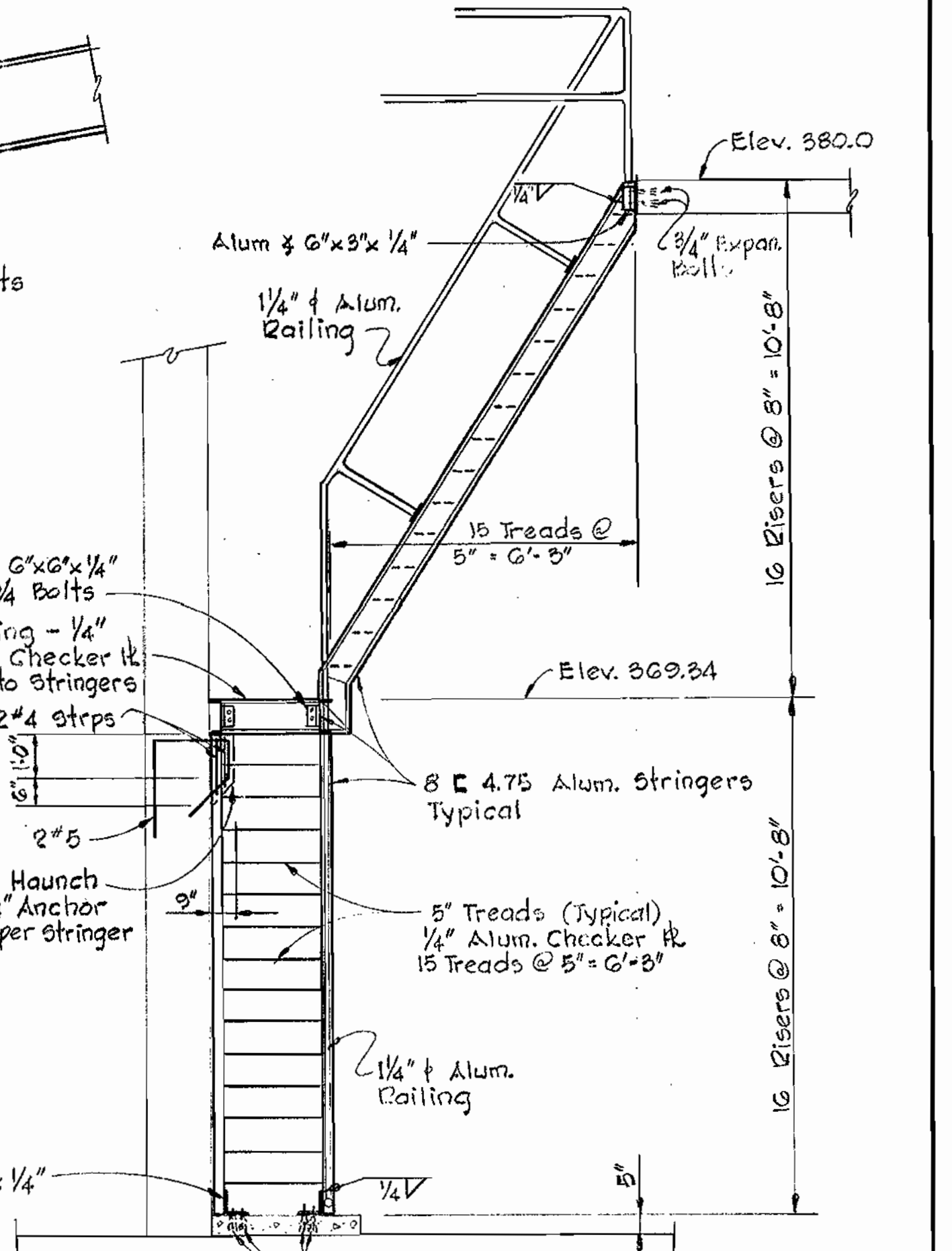
SECTION 4B
Scale: 3/8" = 1'-0"



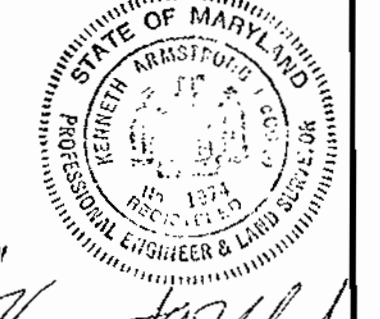
PLAN
Scale: 3/8" = 1'-0"



HINGE DETAIL
Scale: 3/8" = 1'-0"

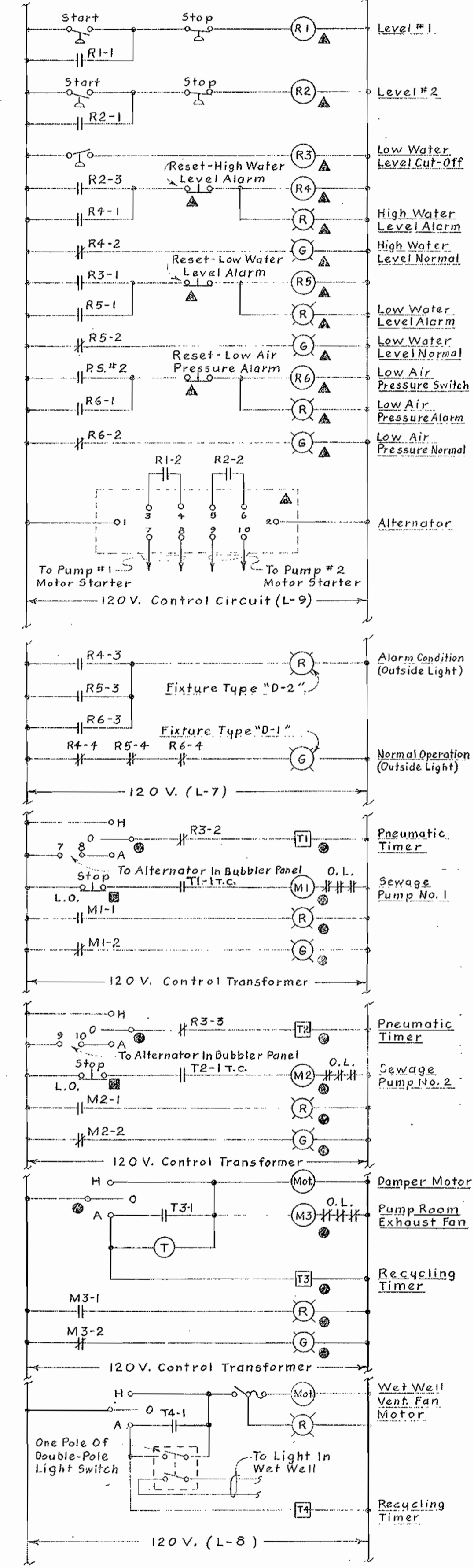
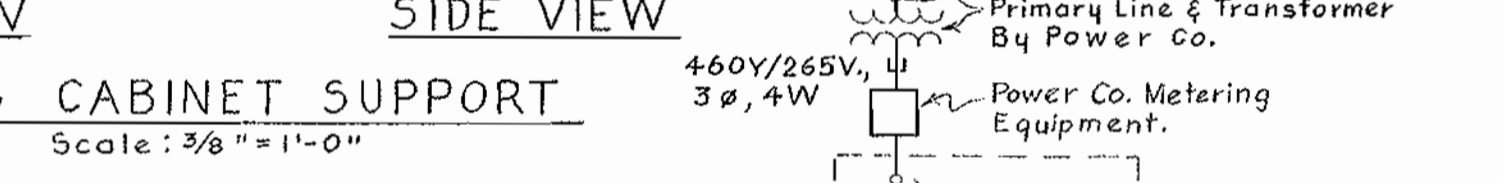
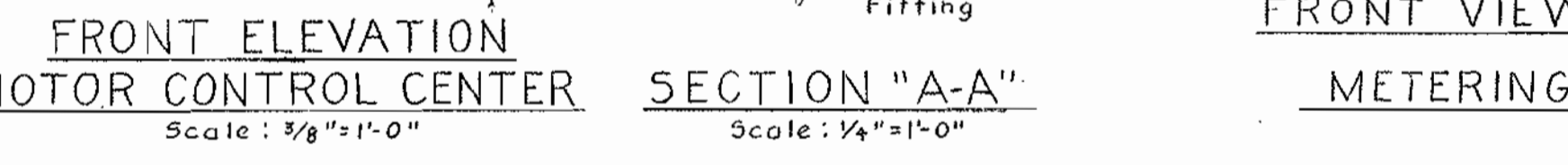
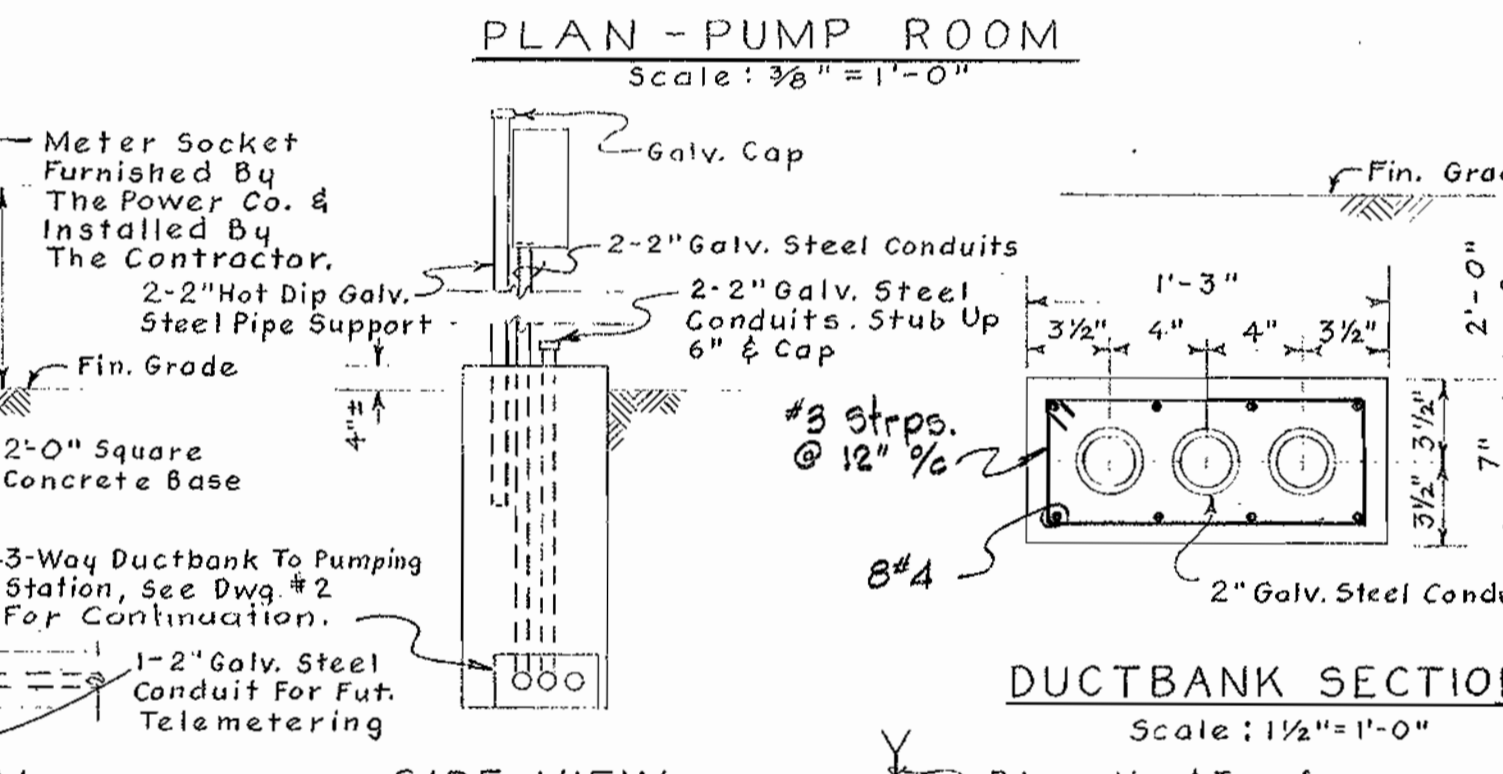
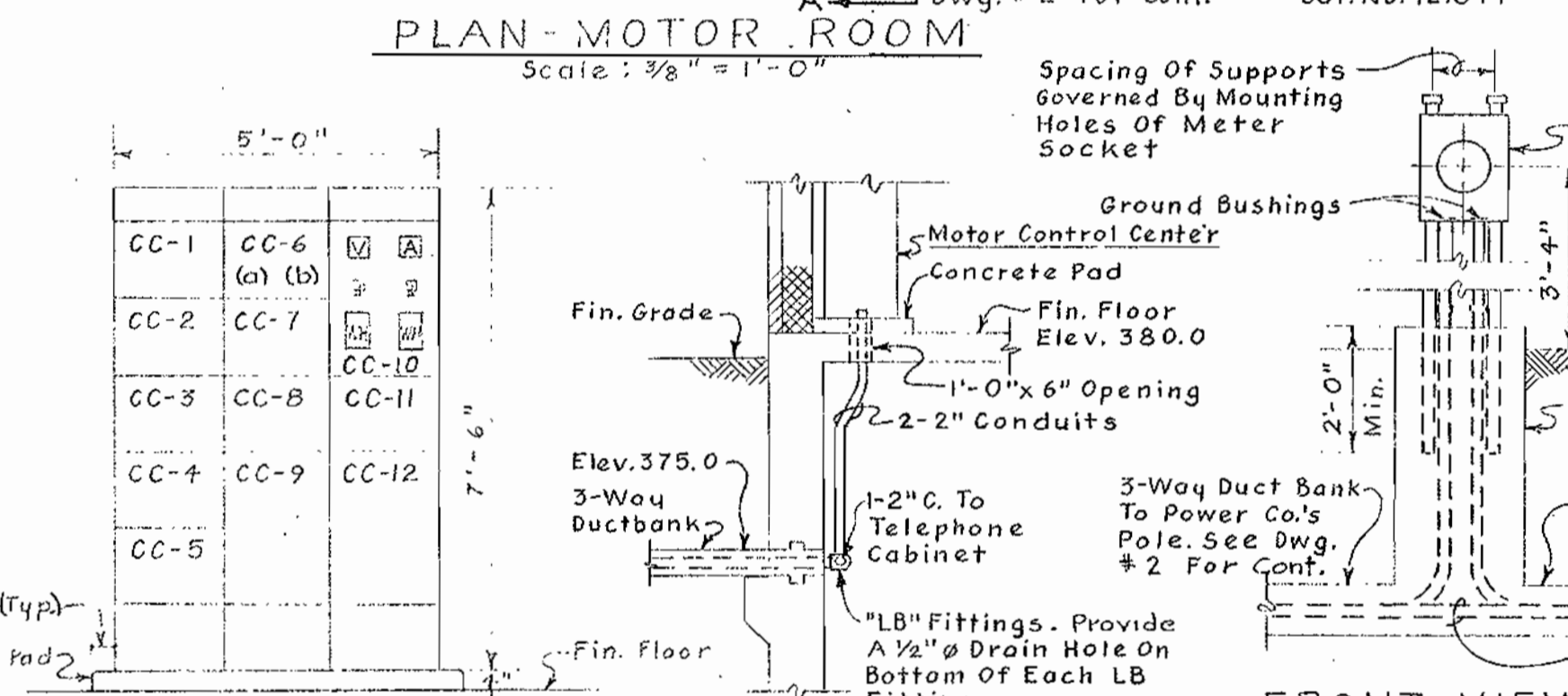
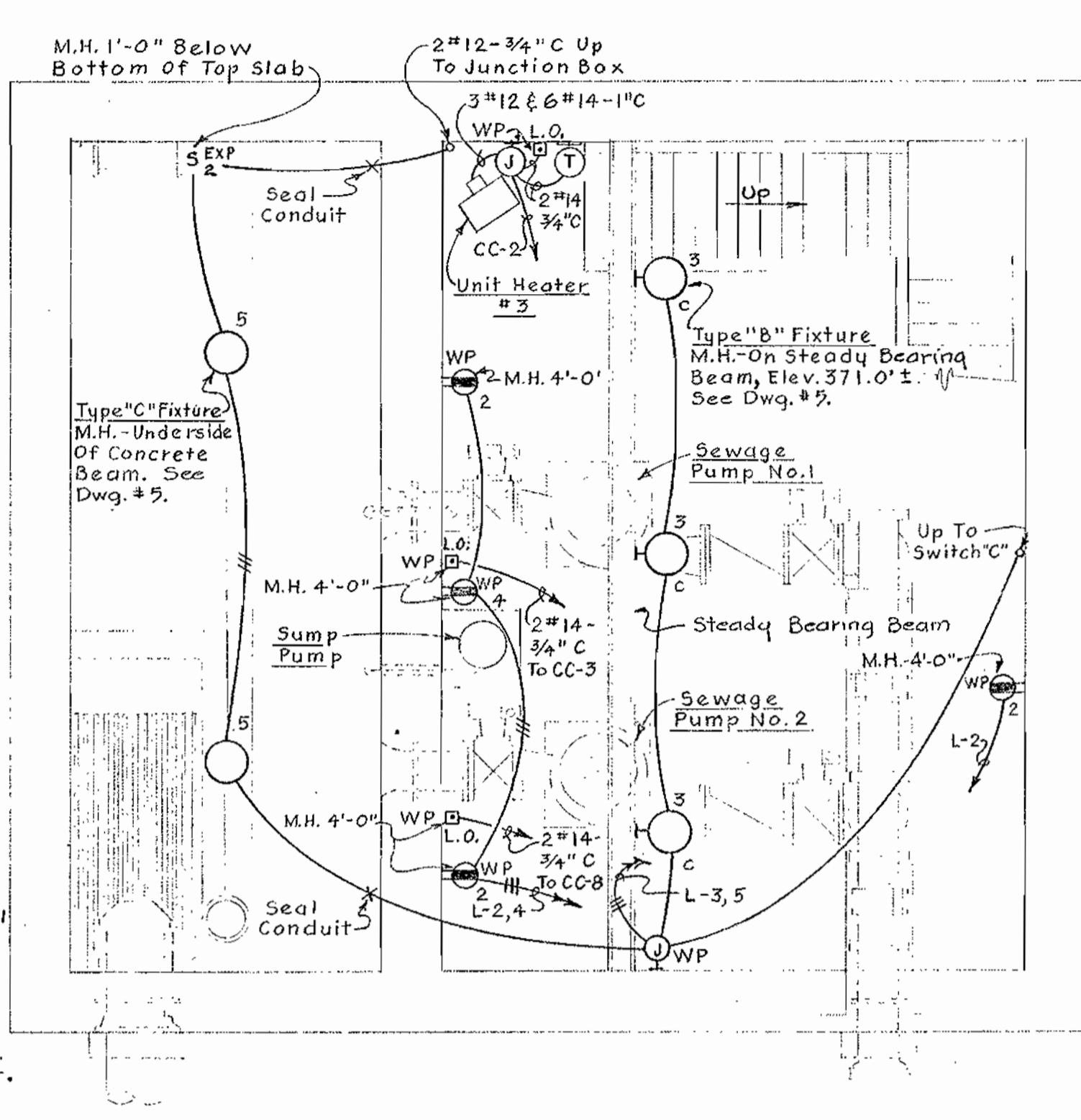
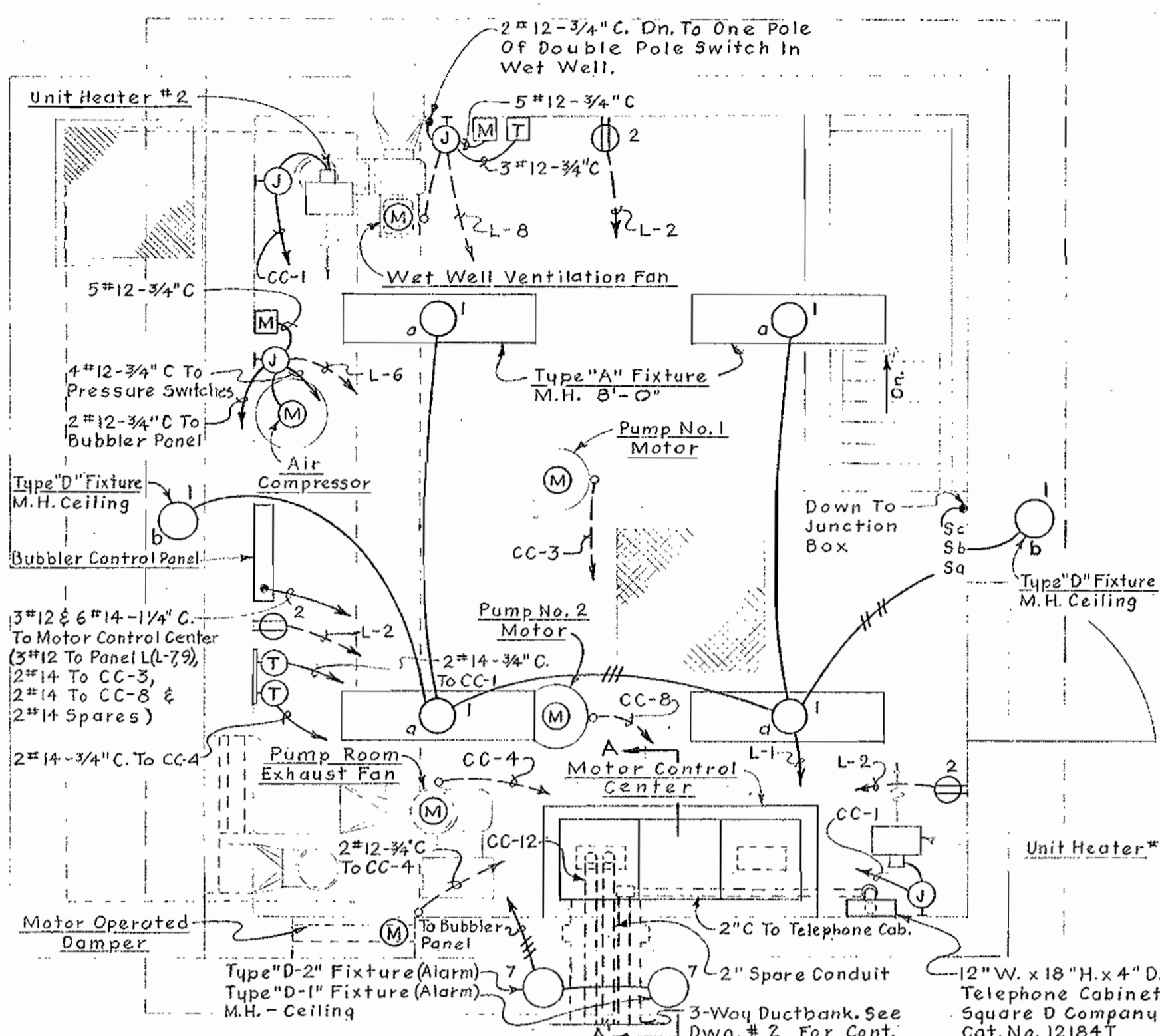


STAIR DETAIL
Scale: 3/8" = 1'-0"



<p>WHITMAN, REQUARDT & ASSOCIATES ENGINEERS 1304 ST. PAUL ST. BALTIMORE, MARYLAND</p>	<p>HOWARD COUNTY METROPOLITAN COMMISSION Jan. 20, 1965 W. O. F. [Signature] CHIEF ENGINEER</p>	<p>CONTRACT NO. 91-S</p>	<p>STRUCTURAL DETAILS</p>	<p>ELLCOTT CITY SUB-DISTRICT</p>	<p>DRAWING NO. 4 OF 6</p>	<p>SCALE AS SHOWN</p>
---	--	--------------------------	---------------------------	----------------------------------	---------------------------	-----------------------

WS 91/S/4



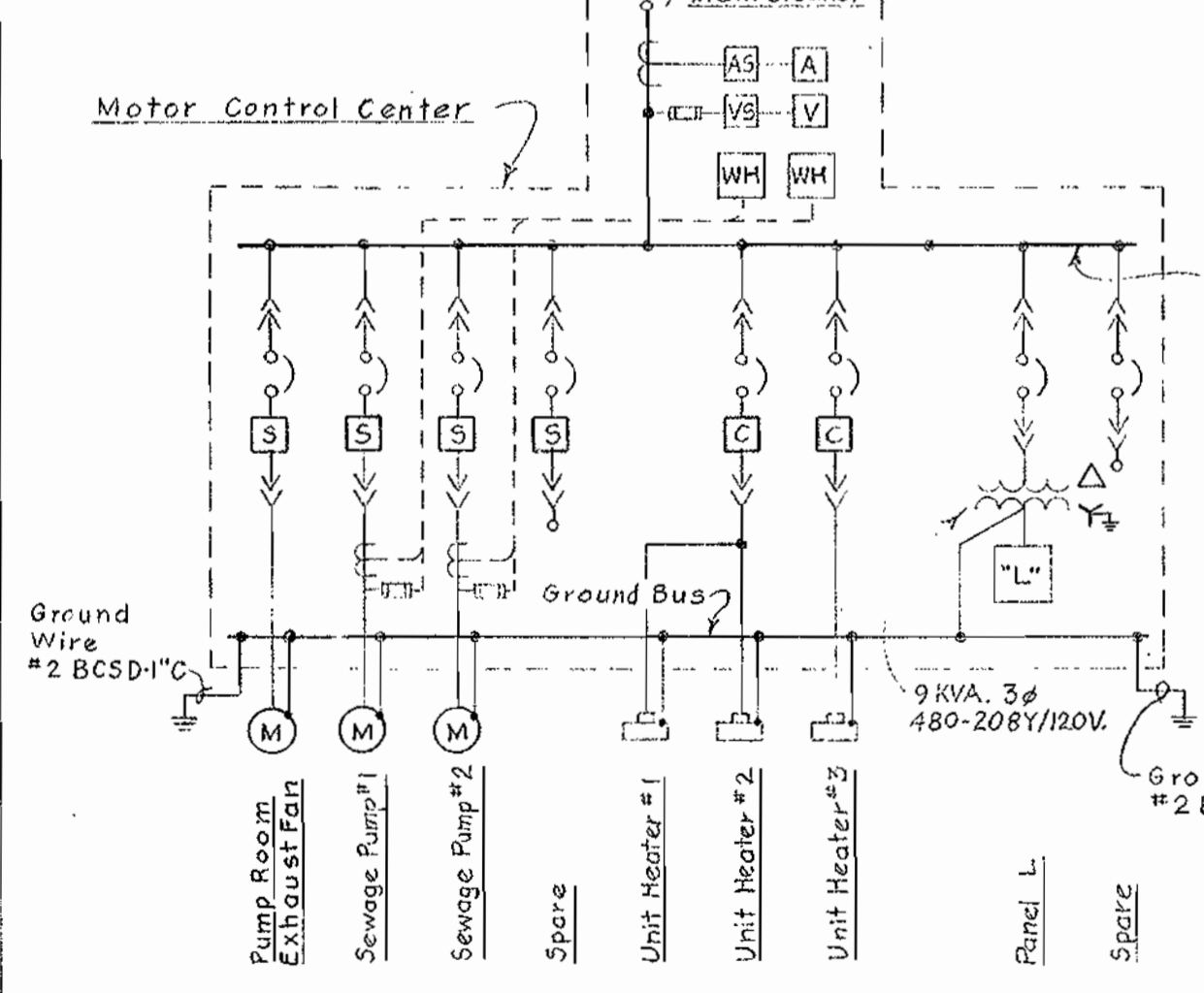
- ### ELECTRICAL LEGEND
- Outlet - Incandescent - Ceiling - Wall
 - Outlet - Incandescent - Explosion Proof
 - Junction Box - Weatherproof
 - Outlet - Duplex Convenience, M.H. 18"
 - Outlet - Single Convenience - Weatherproof
 - Switch - Single Pole - Double Pole & Explosion Proof
 - Conduit - On Ceiling Or Wall
 - Conduit - In Or Under Floor Slab
 - Conduit Seal
 - Home Run To Panelboard - No Of Arrows Indicate No. Of Circuits - No Of Cross Lines Indicate No. Of Wires, Where No Cross Lines Appear, 2 Conductors #12 Are Implied Unless Otherwise Noted.
 - Thermostat - Motor
 - Underground Ductbank
 - Unit Heater
 - Starter - Magnetic - Manual
 - Circuit Breaker
 - Contactor - Timer
 - Outlet - Fluorescent - 4 Foot
 - Power Transformer
 - Current Transformer
 - Pole With Down Guy
 - Voltmeter - Ammeter
 - Voltmeter Switch - Ammeter Switch
 - Watthour Meter
 - Pushbutton Station - Lockout Stop
 - Ground
 - Pressure Switch
 - Pressure Operated Switch - Normally Open - Normally Closed
 - Hand - Off - Auto, Selector Switch
 - Manual Starter

- ### ELECTRICAL NOTES
- For Outside Electrical Work, See Dwg. # 2.
 - For Panelboard Schedules, See Specifications.
 - For Fixture Types, See Specifications.
- ### LOCATION SYMBOLS
- Equipment Located in Bubbler Control Panel
 - Equipment Located in Motor Control Center
 - Equipment Located at Pump

MOTOR CONTROL CENTER SCHEDULE 460/265 V, 3Ø, 4 W.											
UNIT No.	NAMEPLATE DATA	H.P.	DEVICE DESCRIPTION	AUX. DESCRIP.	BREAKER	A.I.C.	WIRE SIZE	TYPE	FOR	COND. SIZE	GROUND WIRE SIZE
CC-1	Unit Heater No. 1 & No. 2	2-3 KW	Combination Contactor SIZE #1 F.V.N.R.	a, c, d	100	3 20	4 3 12	RHW	Power	1"	14
CC-2	Unit Heater No. 3	3 KW	Combination Contactor SIZE #1 F.V.N.R.	a, c, d	100	3 20	4 3 12	RHW	Power	1 1/4"	14
CC-3	Sewage Pump No. 1	15	Combination Starter SIZE #2 F.V.N.R.	a, b, c, d, e	100	3 50	4 3 10	RHW	Power	1"	10
CC-4	Pump Room Exhaust Fan	1/2	Combination Starter SIZE #1 F.V.N.R.	a, b, c, d	100	3 15	4 3 12	RHW	Power	3/4"	14
CC-5	Blank		Combination Starter SIZE #1 F.V.N.R.	a, b, c, d	100	3 20	4				
CC-6	9 KVA Transformer		Circuit Breaker		100	3 20	4		By Equipment Manufacturer		
CC-7	Panel L, 208Y/120V.		Circuit Bkr. Panelboard (See Panel Schedule)		100	3 20	4		By Equipment Manufacturer		
CC-8	Sewage Pump No. 2	15	Combination Starter SIZE #2 F.V.N.R.	a, b, c, d, e	100	3 50	4 3 10	RHW	Power	1"	10
CC-9	9 KVA, 3Ø Transformer 480-208Y/120V.		9 KVA, 3Ø Transformer 480-208Y/120V.						By Equipment Manufacturer		
CC-10	Meters		Voltmeter, Ammeter, Selector Switches & Watthour Meters						By Equipment Manufacturer		
CC-11	Pump Room Exhaust Fan Timer		Recycling Timer						By Equipment Manufacturer		
CC-12	Main Breaker		Circuit Breaker		225	3 125	6 4 2	RR USE	Power	2"	

AUXILIARY DESCRIPTION LEGEND
 a. - Red & Green Indicating Lights.
 b. - Third Overload Relay.
 c. - Hand - Off - Auto, Selector Switch.
 d. - 480-120 Volt Control Transformer.
 e. - Pneumatic Timer.

*** A. I. C. LEGEND**
 4. - 15,000 A. At 480 Volts
 6. - 25,000 A. At 480 Volts



WHITMAN, REQUARDT & ASSOCIATES
 ENGINEERS
 1304 ST. PAUL ST.
 BALTIMORE, MARYLAND

HOWARD COUNTY METROPOLITAN COMMISSION
 Jan. 20, 1965
W. F. Liberty
 CHIEF ENGINEER

CONTRACT NO. 91-S

ELECTRICAL PLANS & DETAILS

ELLICOTT CITY SUB-DISTRICT

DRAWING NO. 6 OF 6 SCALE AS SHOWN

WS 9/5/6 6