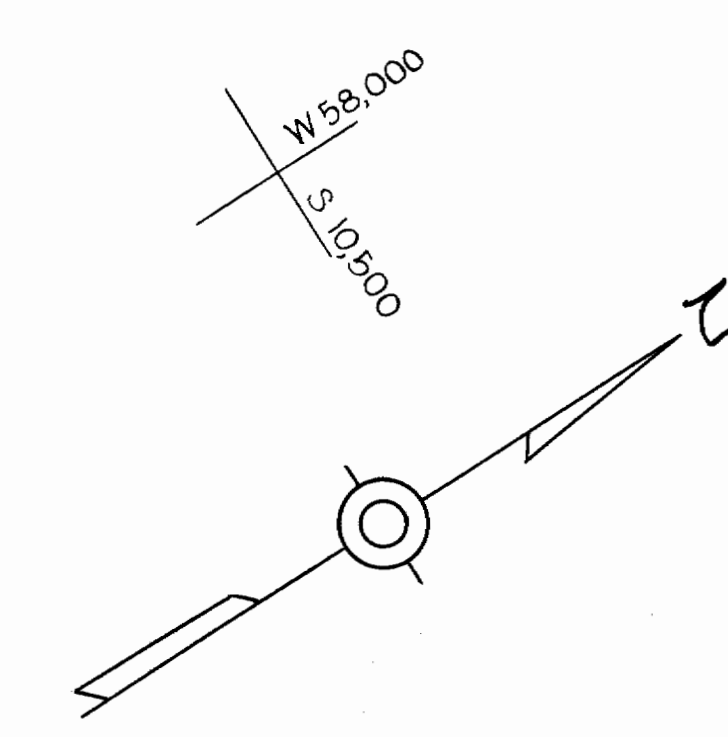
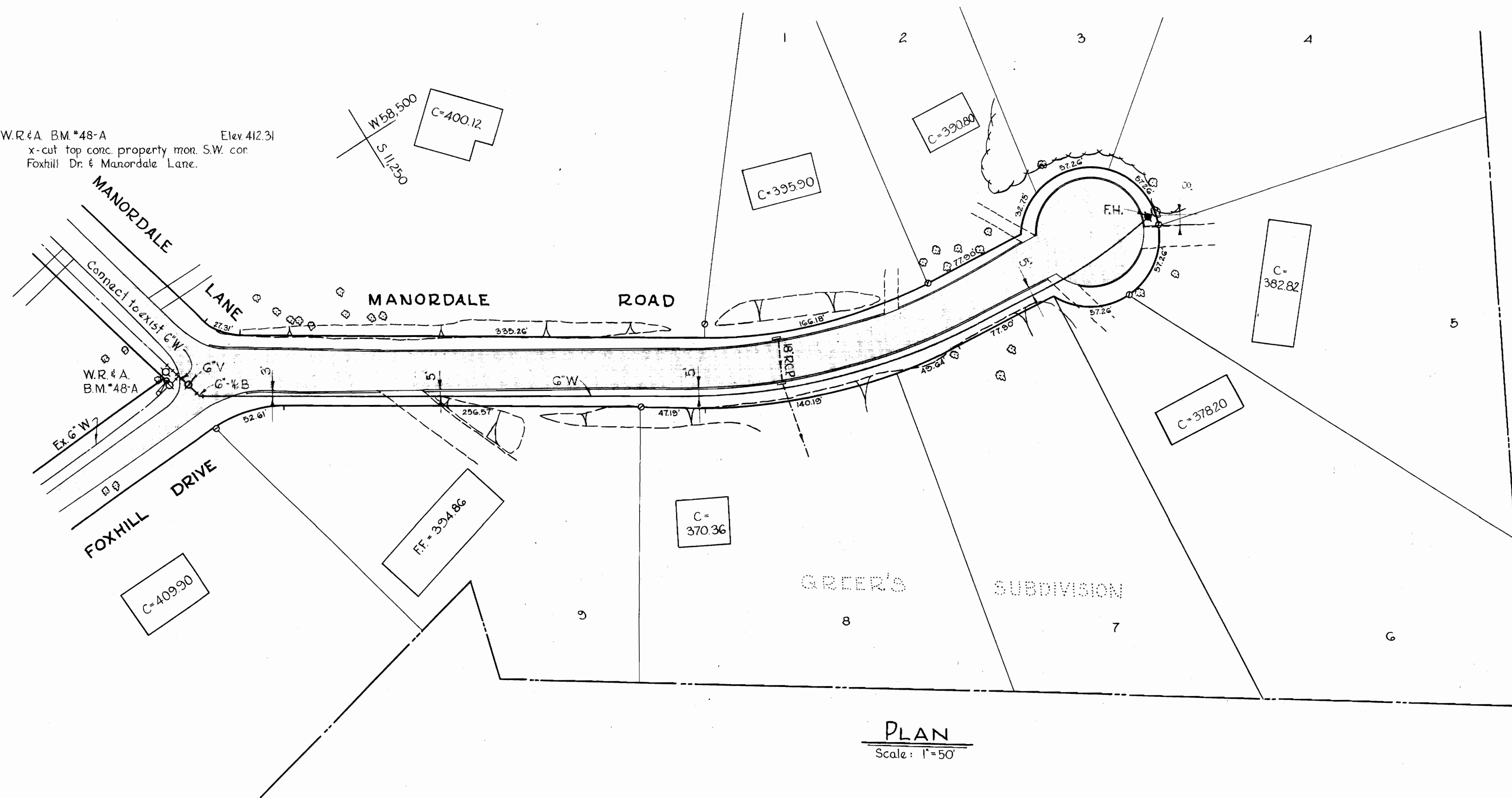


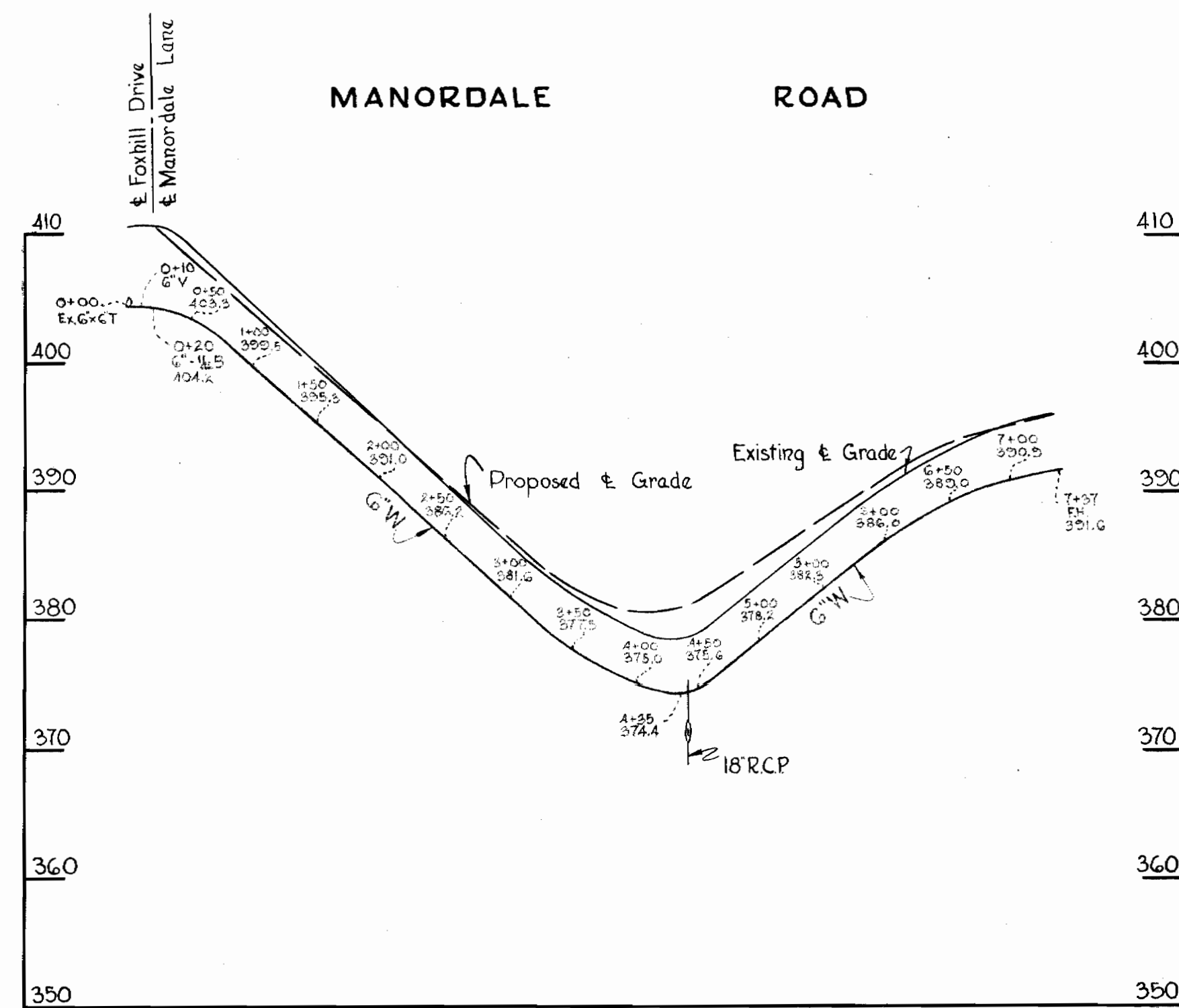
W.R.#A B.M.\*48-A Elev 412.31  
 x-cut top conc. property mon. S.W. cor  
 Foxhill Dr. & Manordale Lane.



**GENERAL NOTES**

1. Approximate location of existing mains are shown. The Contractor shall take all necessary precautions to protect the existing mains and services and maintain uninterrupted supply. Any damage incurred shall be repaired immediately.
2. All pipe elevations shown are invert elevations.
3. The Contractor shall locate existing utilities a minimum of two weeks in advance of construction operations in vicinity of utilities.
4. For all standard details see Standards bound in Specifications.
5. All water mains to be C.I.P. Class 22 and have a minimum of 3 1/2 cover.
6. Block all fittings with concrete, see standard details in Specifications.
7. Bury line elevation on fire hydrant shall be set the same as edge of paving or as directed by the Engineer in the field.
8. Buttress Fire Hydrants with concrete; provide copper pipe at weep holes as required for positive drainage. For Buttress dimensions see Standard Detail W-B Buttress for Caps.

**PLAN**  
 Scale: 1"=50'



**PROFILE**  
 Scale: H: 1"=100'  
 V: 1"=10'

Manordale Road  
 Contract 84-W

<b>WHITMAN, REQUARDT &amp; ASSOCIATES</b> ENGINEERS 1304 ST. PAUL ST. BALTIMORE, MARYLAND	<b>HOWARD COUNTY METROPOLITAN COMMISSION</b> DATE _____ CHIEF ENGINEER _____	<b>CONTRACT NO. 84-W</b>	<b>PLAN AND PROFILE OF          WATER MAINS</b>	<b>ELLCOTT CITY SUB-DISTRICT</b>	<b>DRAWING NO. 1 OF 1</b>	<b>SCALE AS SHOWN</b>
--	---	--------------------------	---	----------------------------------	---------------------------	-----------------------

W. O. 5125-2

AS BUILT 22 JUN 84

WS 84W/1