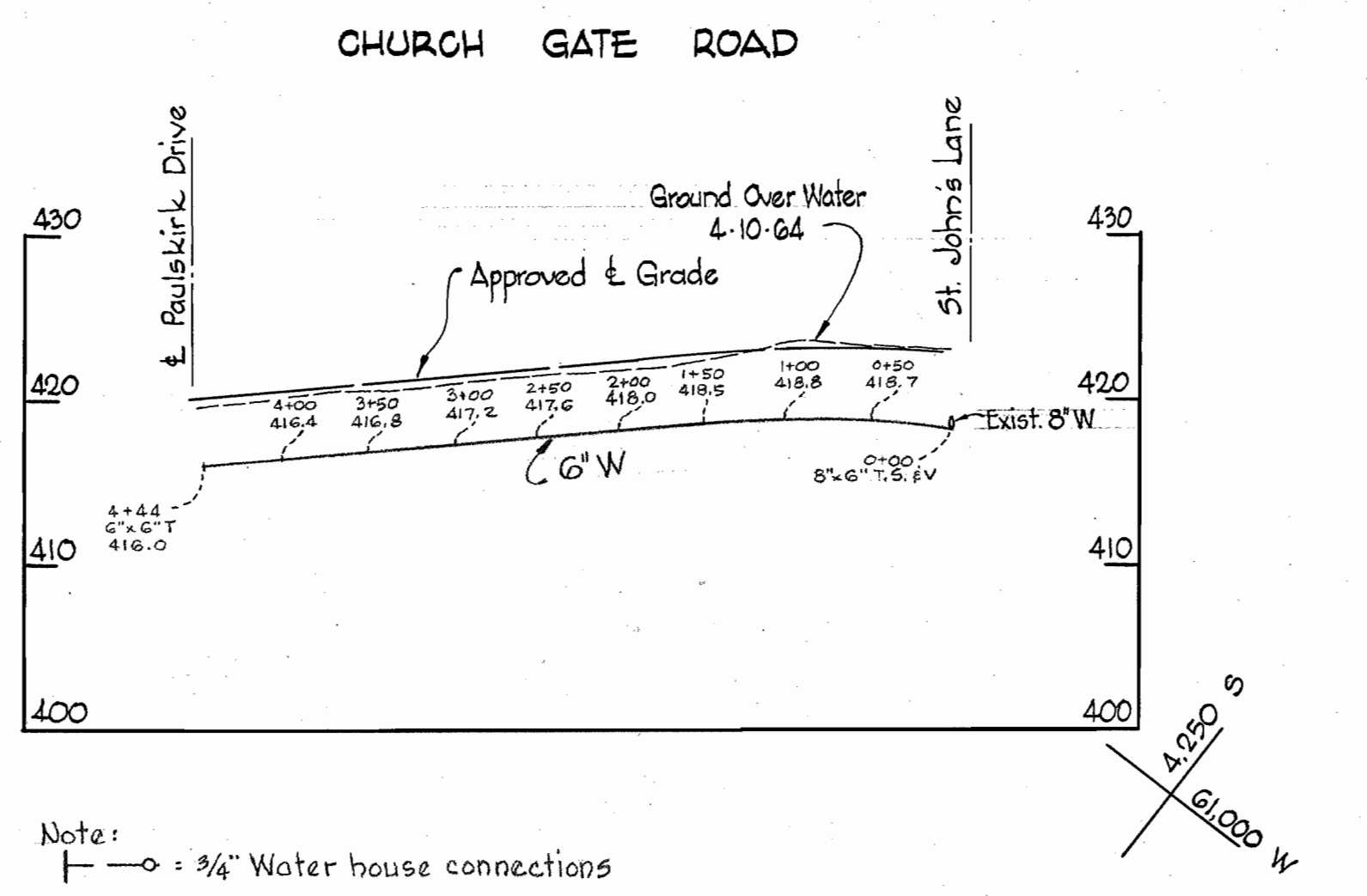
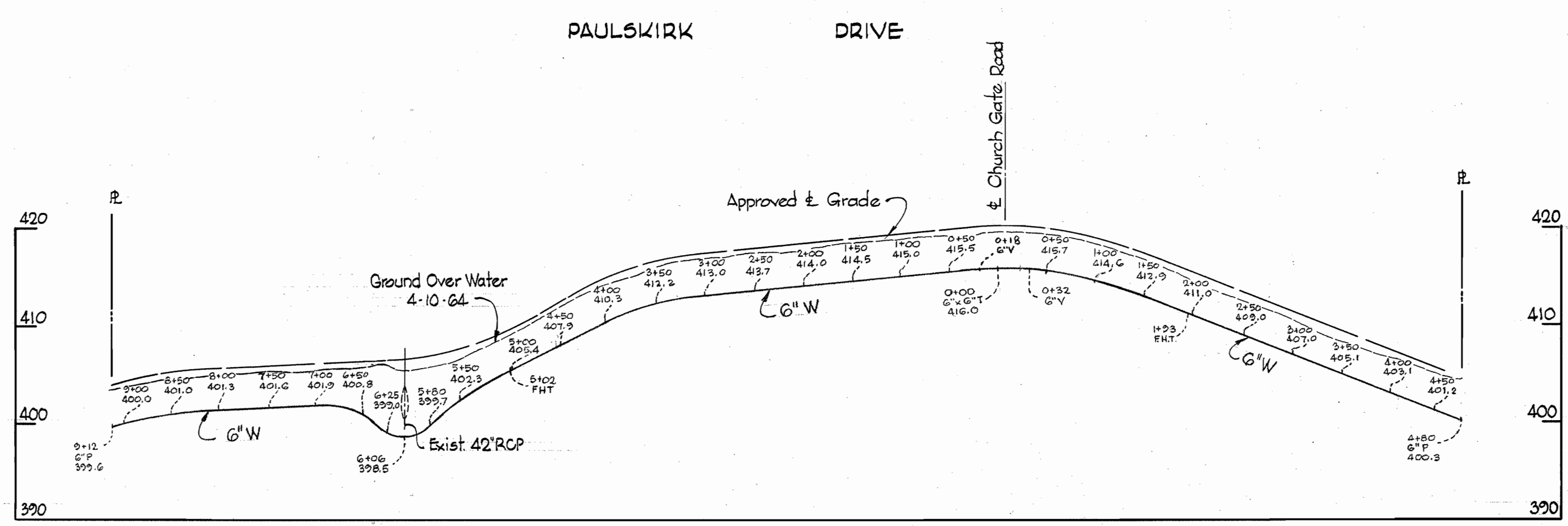


### GENERAL NOTES

1. Approximate location of existing mains are shown. The Contractor shall take all necessary precautions to protect the existing mains and services and maintain uninterrupted supply. Any damage incurred shall be repaired immediately.
2. All pipe elevations shown are invert  $\text{Q}$  elevations.
3. The Contractor shall locate existing utilities a minimum of two weeks in advance of construction operations in vicinity of utilities.
4. For all standard details see Standards bound in Specifications.
5. All water mains to be C.I.P. Class 22 and have a minimum of  $3\frac{1}{2}$ " cover.
6. Block all fittings with concrete, see standard details bound in specifications.
7. Bury line elevation on fire hydrant shall be set the same as edge of paving or as directed by the Engineer in the field.

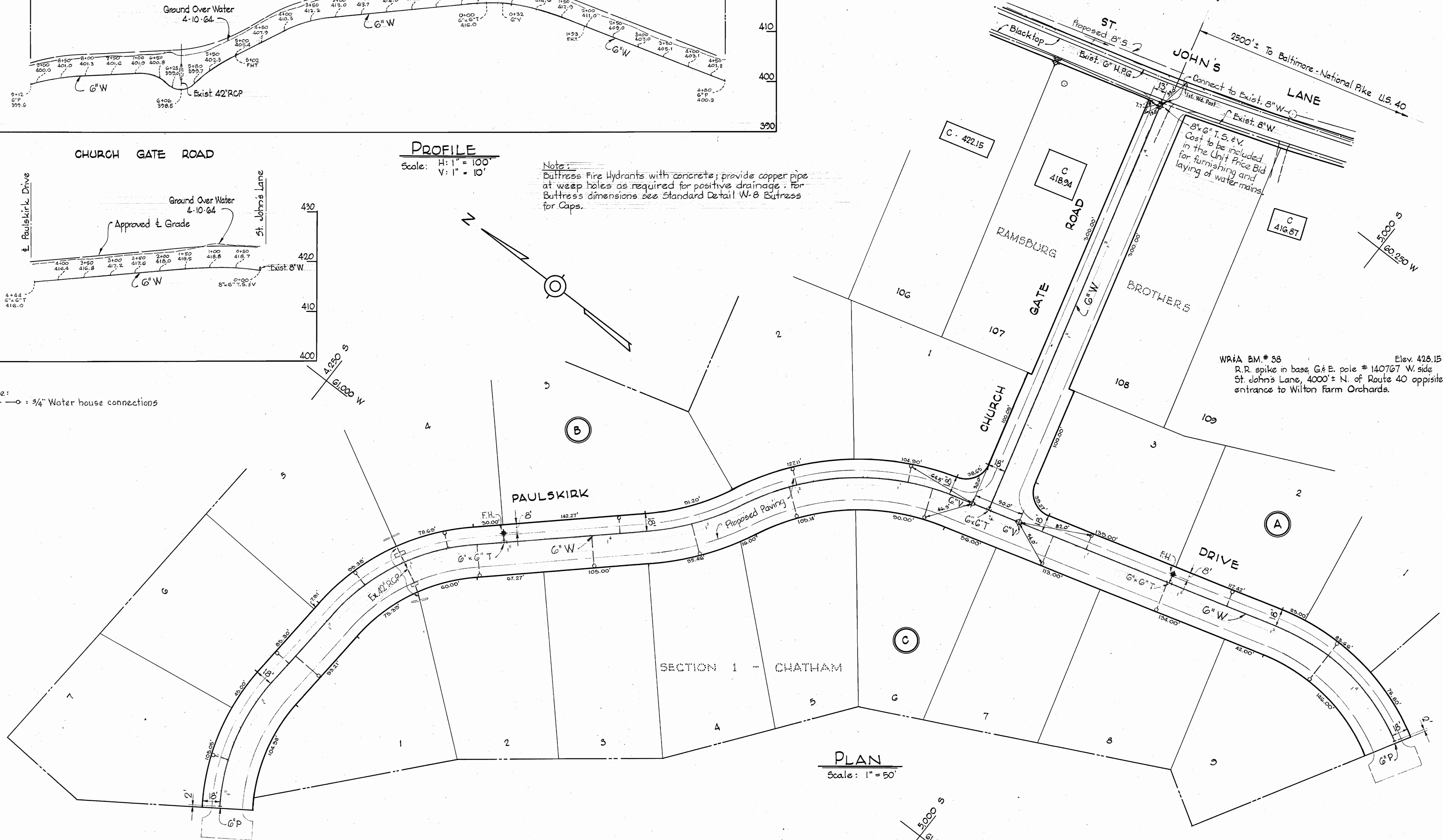


### PROFILE

Scale: H: 1" = 100'  
V: 1" = 10'

Note:  
Buttress Fire Hydrants with concrete; provide copper pipe at weep holes as required for positive drainage. For Buttress dimensions see Standard Detail W-8 Buttress for Caps.

Note:  
—o—:  $\frac{3}{4}$ " Water house connections



### PLAN

Scale: 1" = 50'

WRIA B.M. # 88 Elev. 428.15  
R.R. spike in base G.E. pole # 140767 W. side  
St. John's Lane, 4000' ± N. of Route 40 opposite  
entrance to Wilton Farm Orchards.

WHITMAN, REQUARDT & ASSOCIATES  
ENGINEERS  
1304 ST. PAUL ST.  
BALTIMORE, MARYLAND

HOWARD COUNTY METROPOLITAN COMMISSION  
March 31, 1964  
DATE  
[Signature] CHIEF ENGINEER

CONTRACT NO. 77-W

PLAN AND PROFILE OF  
WATER MAINS

ELLICOTT CITY SUB-DISTRICT

DRAWING NO. 1 OF 1  
SCALE AS SHOWN  
5, 6 SW 41

Chatham Section 1  
Contract N° 77-W

W. O. 5129-2

11 MAY 64 AS-BUILT

WS 77W/1