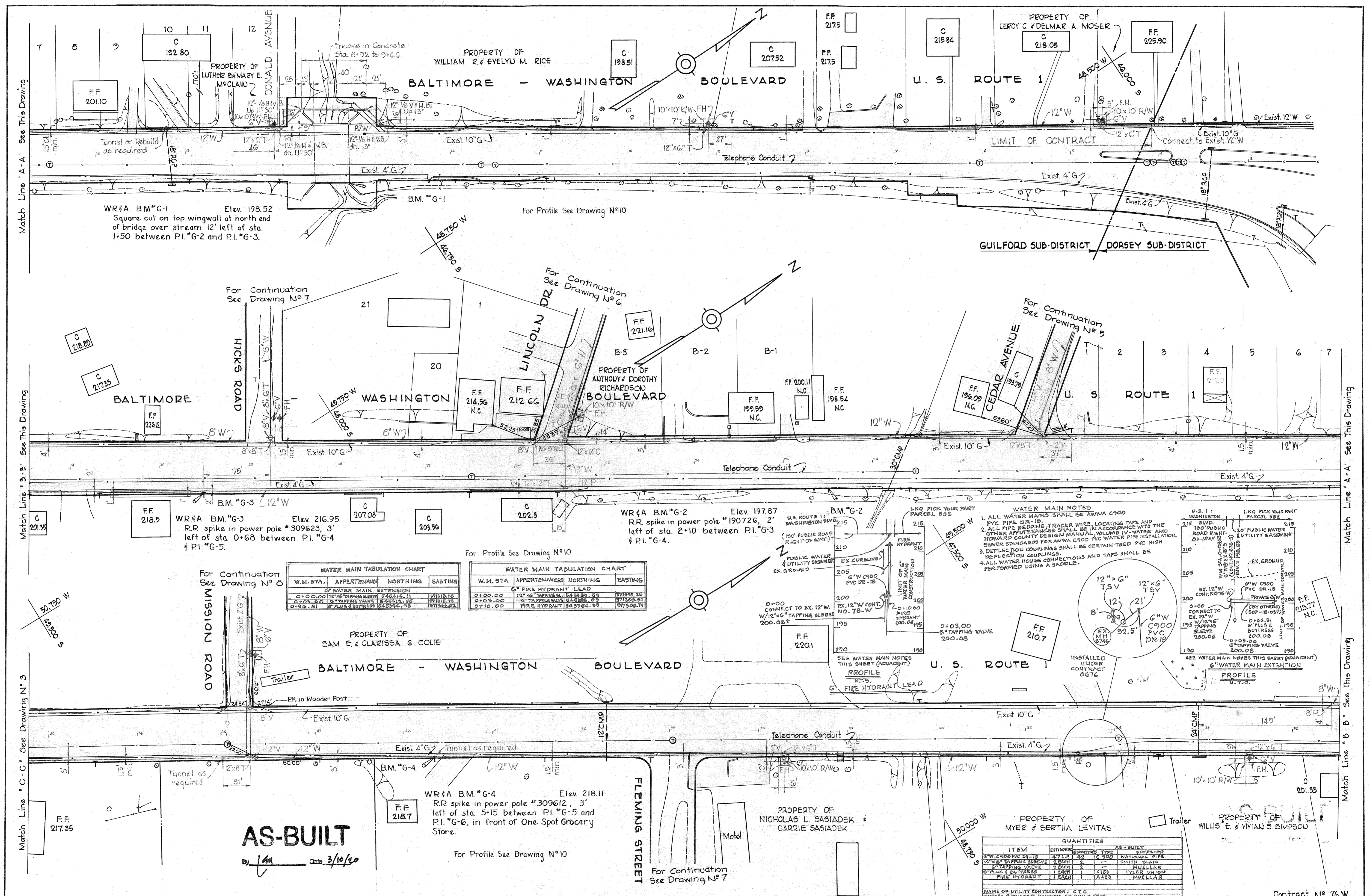


CONTRACT 76W
WATER MAIN EXTENSIONS
HOWARD COUNTY METROPOLITAN COMMISSION
GUILFORD SUB-DISTRICT

AS-BUILT
[Signature] 7/10/20

WHITMAN, REQUARDT & ASSOCIATES ENGINEERS 1304 ST. PAUL ST. BALTIMORE, MARYLAND	HOWARD COUNTY METROPOLITAN COMMISSION July 15, 1964 <i>[Signature]</i> <small>DATE CHIEF ENGINEER</small>	CONTRACT NO. 76W	LOCATION MAP OF WATER MAIN EXTENSIONS	GUILFORD SUB-DISTRICT	DRAWING NO. 1 OF 13	SCALE 1" = 600'
---	---	------------------	--	-----------------------	---------------------------	--------------------



WR&A BM*G-1 Elev. 198.52
Square cut on top wingwall at north end of bridge over stream 12' left of sta. 1+50 between P.I.*G-2 and P.I.*G-3.

For Profile See Drawing N°10

For Continuation See Drawing N°7

For Continuation See Drawing N°6

For Continuation See Drawing N°5

WR&A BM*G-3 Elev. 216.95
RR spike in power pole #309623, 3' left of sta. 0+68 between P.I.*G-4 & P.I.*G-5.

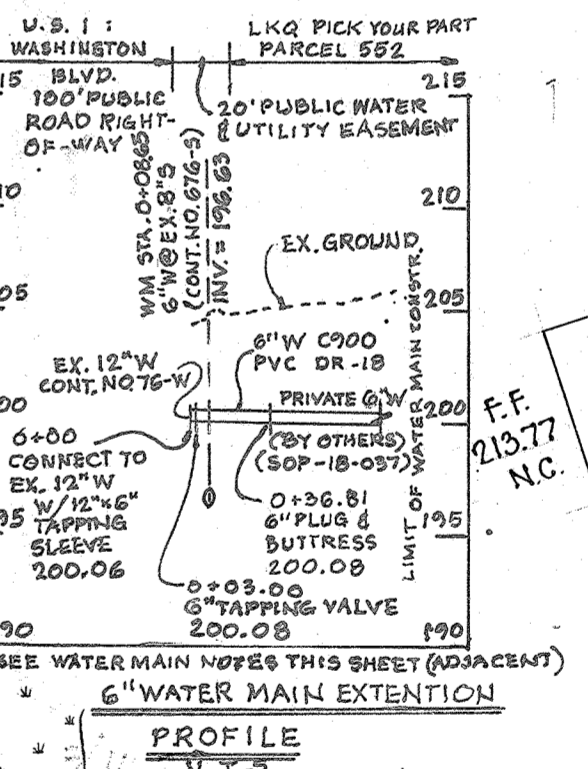
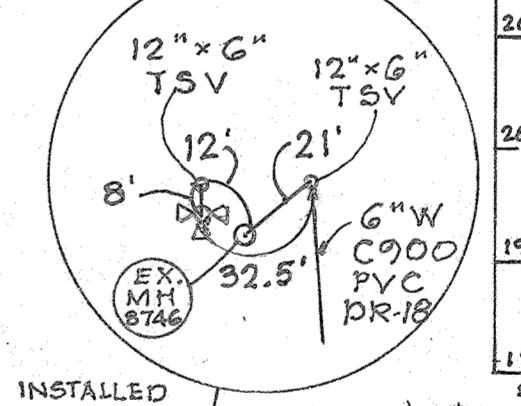
WR&A BM*G-2 Elev. 197.87
RR spike in power pole #190726, 2' left of sta. 2+10 between P.I.*G-3 & P.I.*G-4.

For Profile See Drawing N°10

W.M. STA.	APPERTENANCE	NORTHING	EASTING
0+00.00	12" x 6" TAPPING SLEEVE	84842.11	87118.16
0+03.00	6" TAPPING VALVE	84842.11	87118.16
0+06.00	6" PLUG & BUTTRESS	84842.11	87118.16

W.M. STA.	APPERTENANCE	NORTHING	EASTING
0+00.00	12" x 6" TAPPING SLEEVE	84842.11	87118.16
0+03.00	6" TAPPING VALVE	84842.11	87118.16
0+06.00	6" PLUG & BUTTRESS	84842.11	87118.16

- WATER MAIN NOTES**
1. ALL WATER MAINS SHALL BE ANWA C900 PVC PIPE DR-18.
 2. ALL PIPE BENDING, TRACER WIRE, LOCATING TAPS AND OTHER APPURTENANCES SHALL BE IN ACCORDANCE WITH THE HOWARD COUNTY DESIGN MANUAL VOLUME IV - WATER AND SEWER STANDARDS FOR ANWA C900 PVC WATER PIPE INSTALLATION.
 3. DEFLECTION COUPLINGS SHALL BE CERTAIN-TIED PVC HIGH DEFLECTION COUPLINGS.
 4. ALL WATER MAIN CONNECTIONS AND TAPS SHALL BE PERFORMED USING A SADDLE.



AS-BUILT
Date 3/10/60

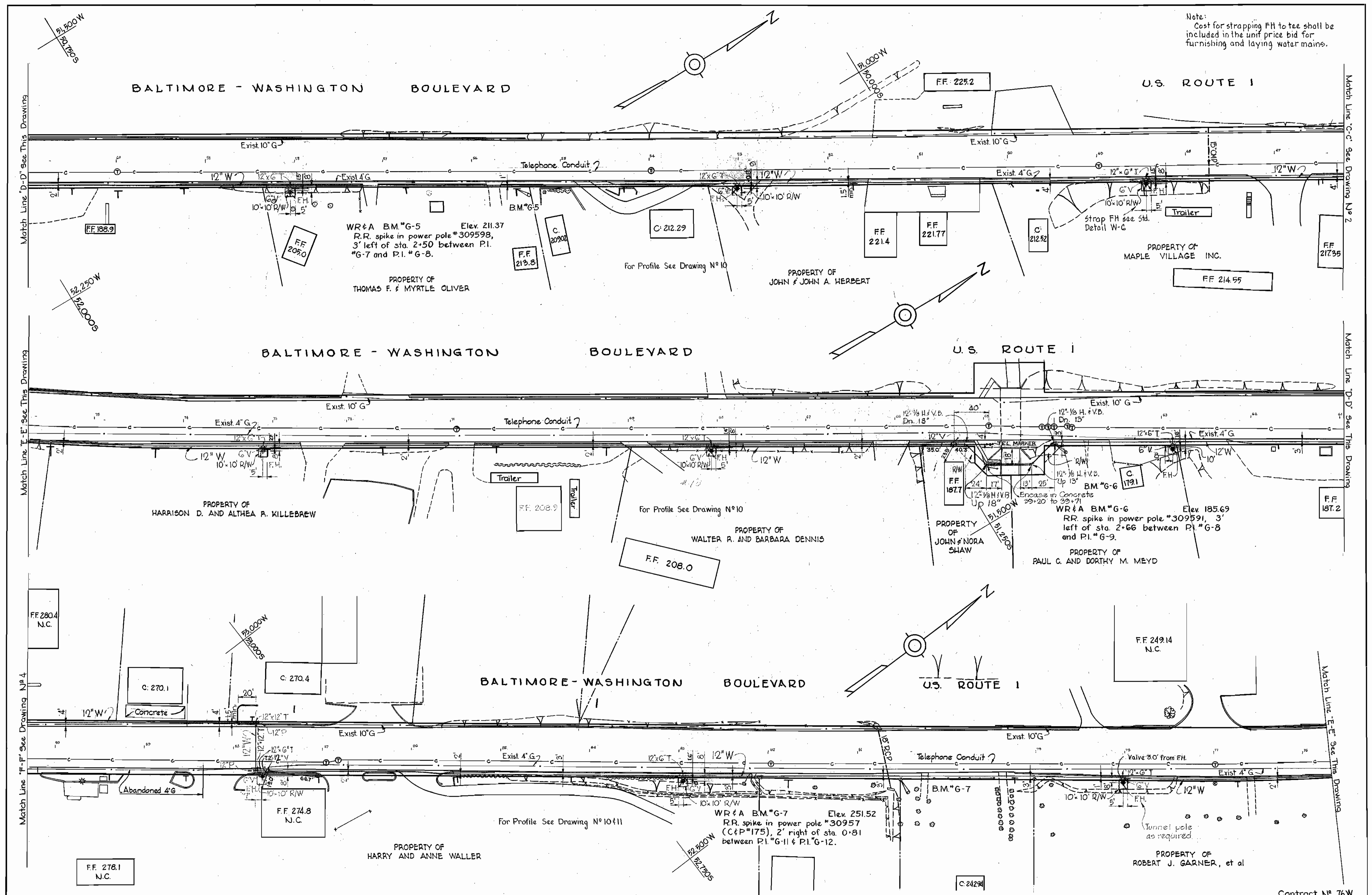
WR&A BM*G-4 Elev. 218.11
RR spike in power pole #309612, 3' left of sta. 5+15 between P.I.*G-5 and P.I.*G-6, in front of One Spot Grocery Store.

For Profile See Drawing N°10

ITEM	QUANTITIES		AS-BUILT	SUPPLIER
	ESTIMATED	ACTUAL		
12" x 6" PVC DR-18	27 L.F.	22	C 500	NATIONAL PIPE
12" x 6" TAPPING SLEEVE	2 EACH	2		SMITH BLAIR
6" TAPPING VALVE	3 EACH	3		MUELLER
6" PLUG & BUTTRESS	1 EACH	1	C185	TYLER UNION
FIRE HYDRANT	1 EACH	1	A425	MUELLER

WHITMAN, REQUARDT & ASSOCIATES ENGINEERS 1304 ST. PAUL ST. BALTIMORE, MARYLAND	HOWARD COUNTY METROPOLITAN COMMISSION July 15, 1964 DATE	CONTRACT NO. 76 W	PLAN OF WATER MAINS	GUILFORD SUB-DISTRICT	DRAWING NO. 2 OF 13	SCALE 1"=50'
					Contract N° 76 W	

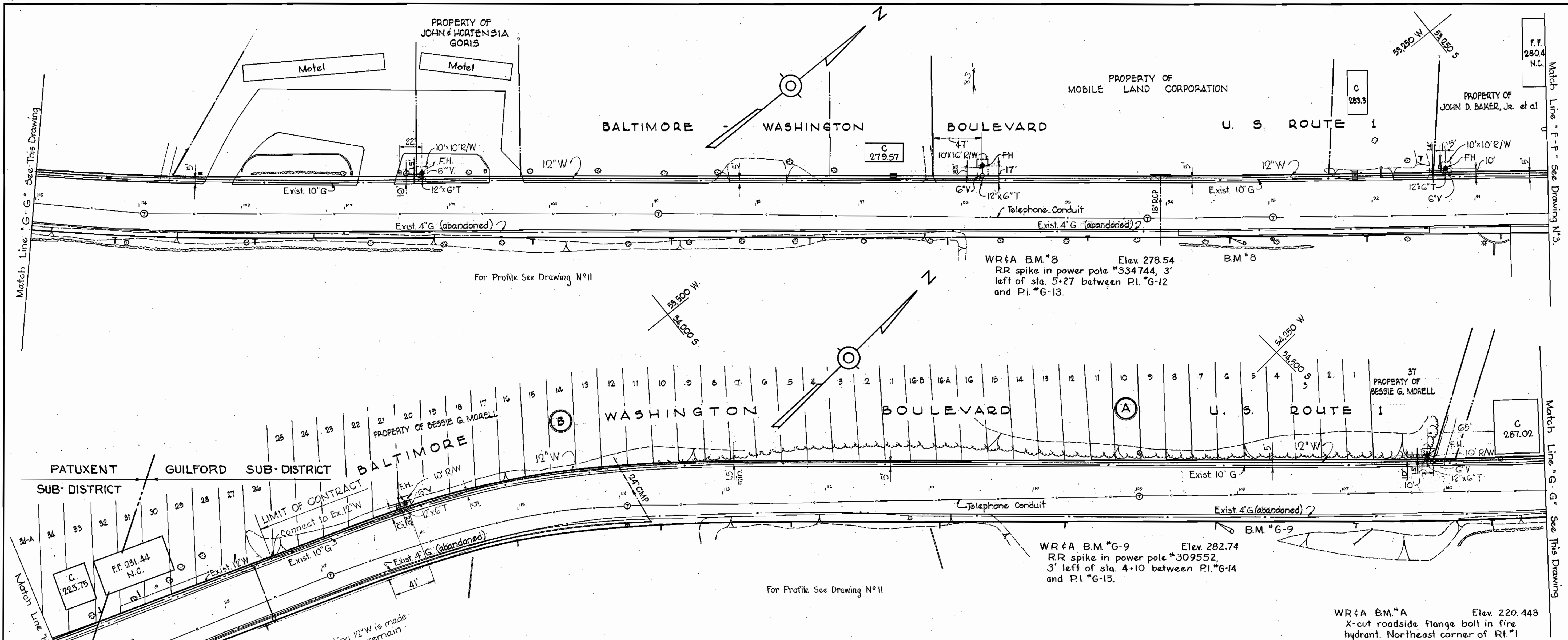
Note:
Cost for strapping FH to tee shall be included in the unit price bid for furnishing and laying water mains.



WS 76W/3

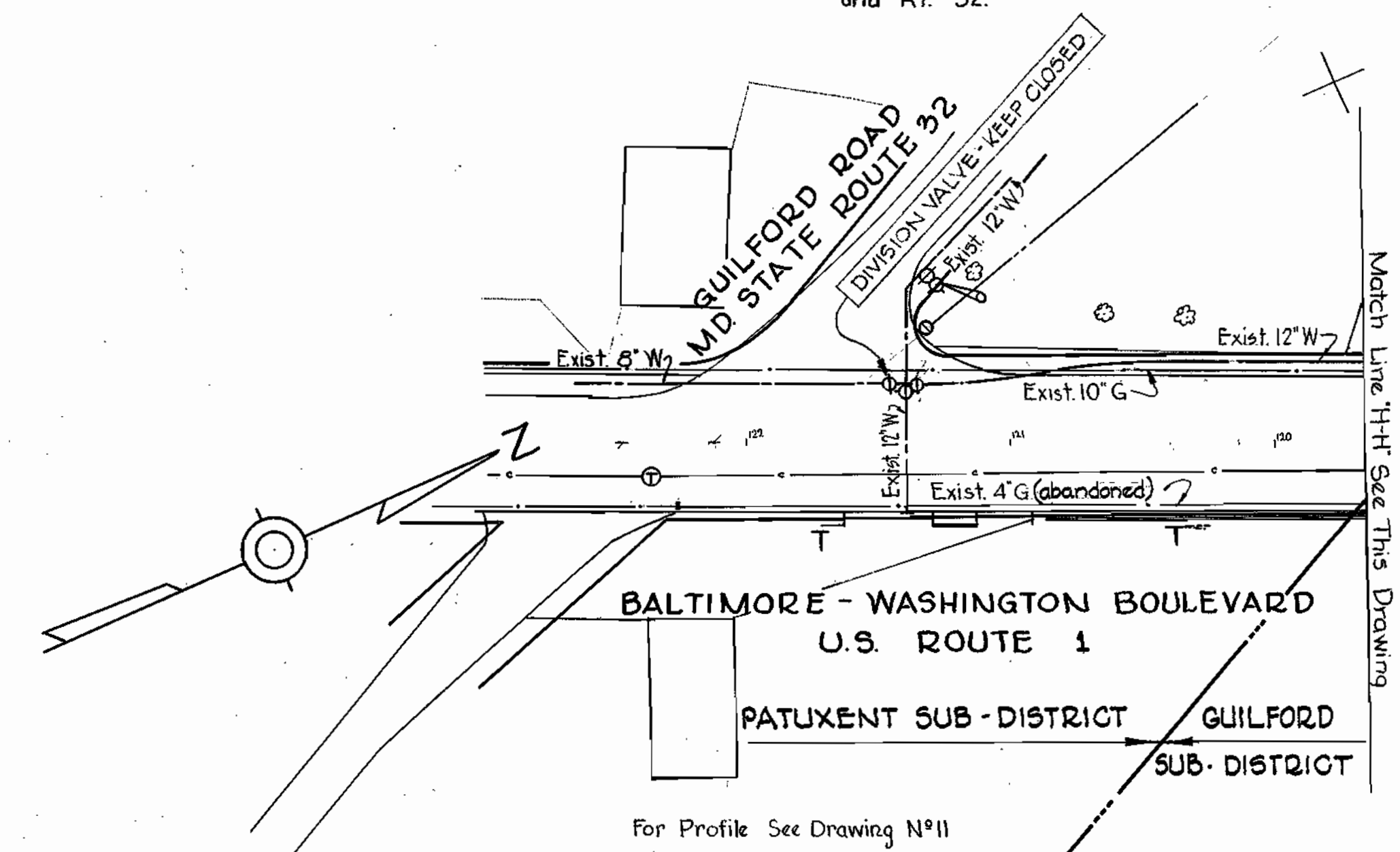
WHITMAN, REQUARDT & ASSOCIATES ENGINEERS 1304 ST. PAUL ST. BALTIMORE, MARYLAND	HOWARD COUNTY METROPOLITAN COMMISSION July 15, 1964 DATE <i>W.O. Edwards</i> CHIEF ENGINEER	CONTRACT NO. 76W	PLAN OF WATER MAINS	GUILFORD SUB-DISTRICT	DRAWING NO. 3 OF 13 SCALE 1" = 50' Contract No 76W AS BUILT Feb. 22, 1966 FB 3132 3121
---	---	------------------	------------------------	-----------------------	--

W. O. 5353-2



GENERAL NOTES

1. Approximate location of existing mains are shown. The Contractor shall take all necessary precautions to protect the existing mains and services and maintain uninterrupted supply. Any damage incurred shall be repaired immediately.
2. All pipe elevations shown are invert elevations.
3. The Contractor shall locate existing utilities a minimum of two weeks in advance of construction operations in vicinity of utilities.
4. The location of all valves, fittings, etc. have been located in plan and dimensions shall be strictly adhered to unless otherwise directed by the Engineer in writing.
5. Bury line elevation on Fire Hydrants shall be set the same as edge of paving or as directed by the Engineer in the field.
6. For all standard details see Standards bound in Specifications.
7. Block all fittings with concrete. See Standard Details.
8. All 6" & 8" W to be Class 22 CIP, All 12" W to be Class 23. Water Mains to have a minimum of 3 1/2' cover unless otherwise noted.
9. Before digging pipe, pushing or doing other work near Telephone Cables call collect any time Lexington 9-9900 Ext. 573, 574, or 575, Baltimore, Maryland.
10. Clear all poles by 2'-0" minimum.
11. Buttress Fire Hydrants with concrete; provide copper pipe at weep holes as required for positive drainage. For Buttress dimensions see Standard Detail W-8 Buttress for Caps.



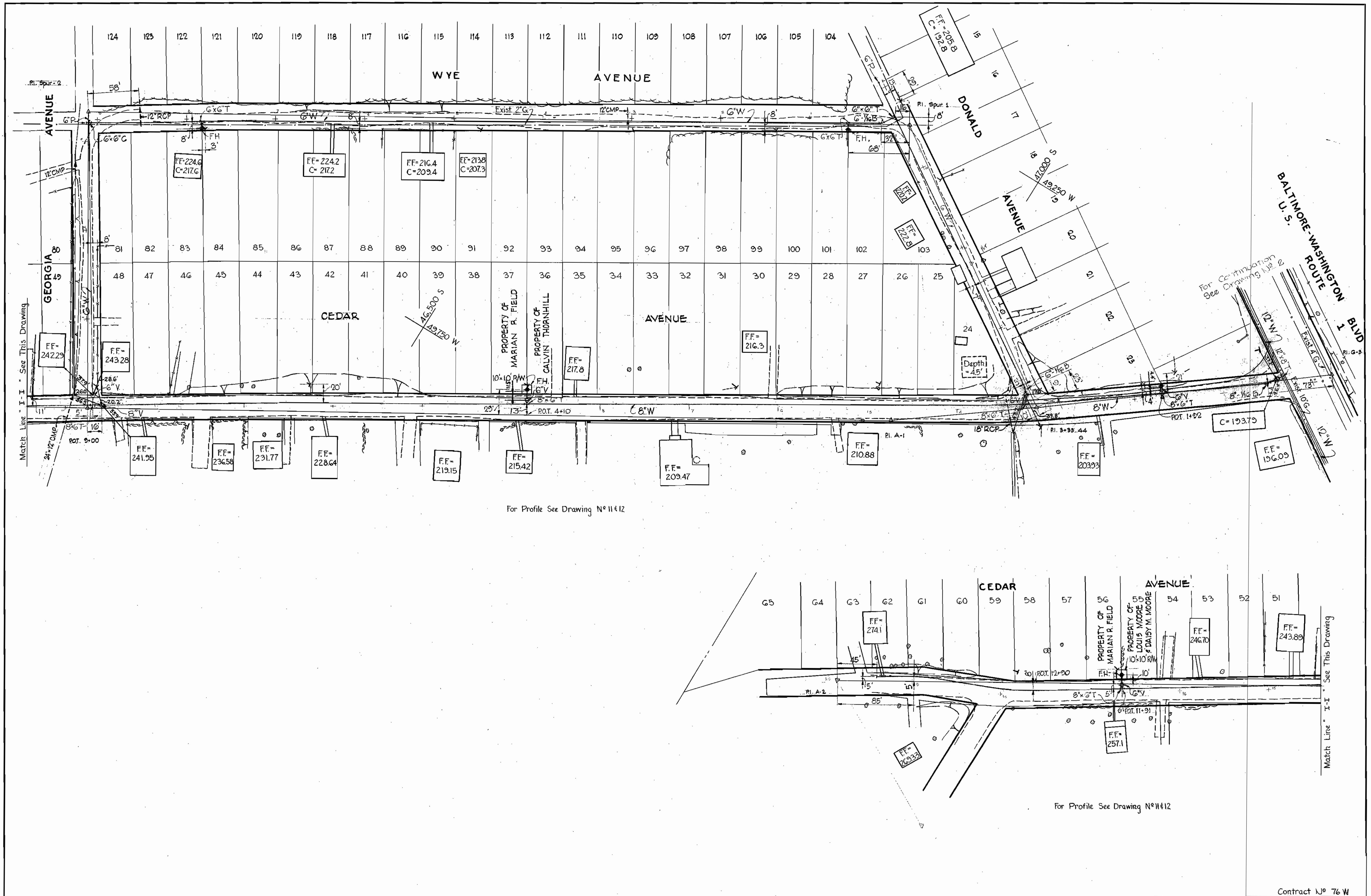
Note:
After connection to Existing 12" W is made
Division Valve at Route 92 to remain
closed.

WHITMAN, REQUARDT & ASSOCIATES ENGINEERS 1304 ST. PAUL ST. BALTIMORE, MARYLAND	HOWARD COUNTY METROPOLITAN COMMISSION July 15, 1964 <small>DATE</small>	CONTRACT NO. 76 W	PLAN OF WATER MAINS	GUILFORD SUB-DISTRICT	DRAWING NO. 4 OF 13	SCALE 1"=50'
--	--	--------------------------	----------------------------	------------------------------	----------------------------	---------------------

WS 76W/4

ELLIOTT CO., PHG., PA. REORDER A-26874

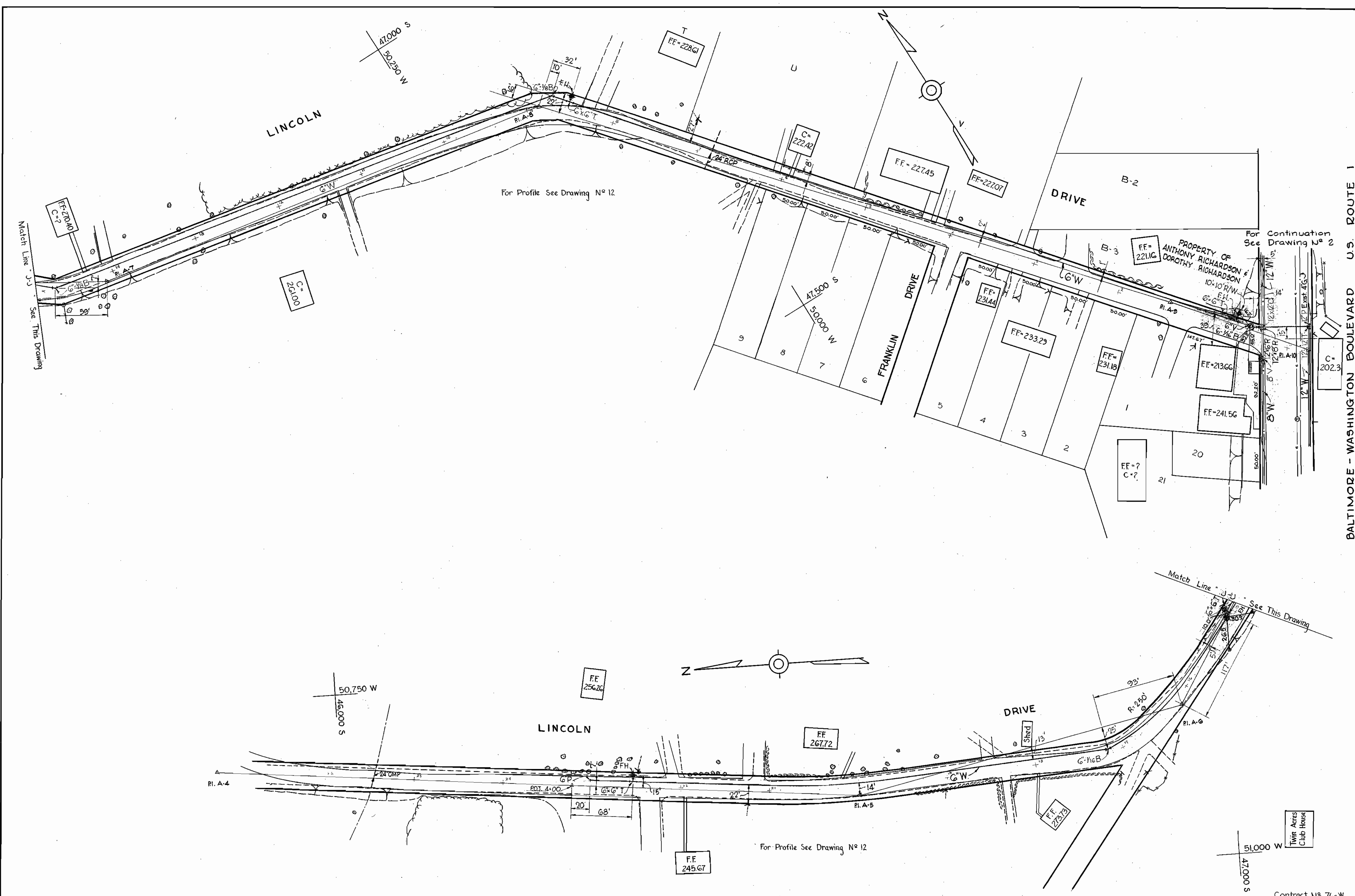
WS 76W/5



WHITMAN, REQUARDT & ASSOCIATES ENGINEERS 1304 ST. PAUL ST. BALTIMORE, MARYLAND	HOWARD COUNTY METROPOLITAN COMMISSION July 15, 1964 <i>W.O. Albert</i> DATE CHIEF ENGINEER	CONTRACT NO. 76W	PLAN OF WATER MAINS	GUILFORD SUB-DISTRICT	Contract No. 76 W DRAWING NO. 5 OF 13 SCALE 1"=50' 47.48 SW 33 47.48 SW 34
---	---	------------------	------------------------	-----------------------	--

ELLIOTT CO. PHO. PA. REORDER A-24674

WS 76W/6



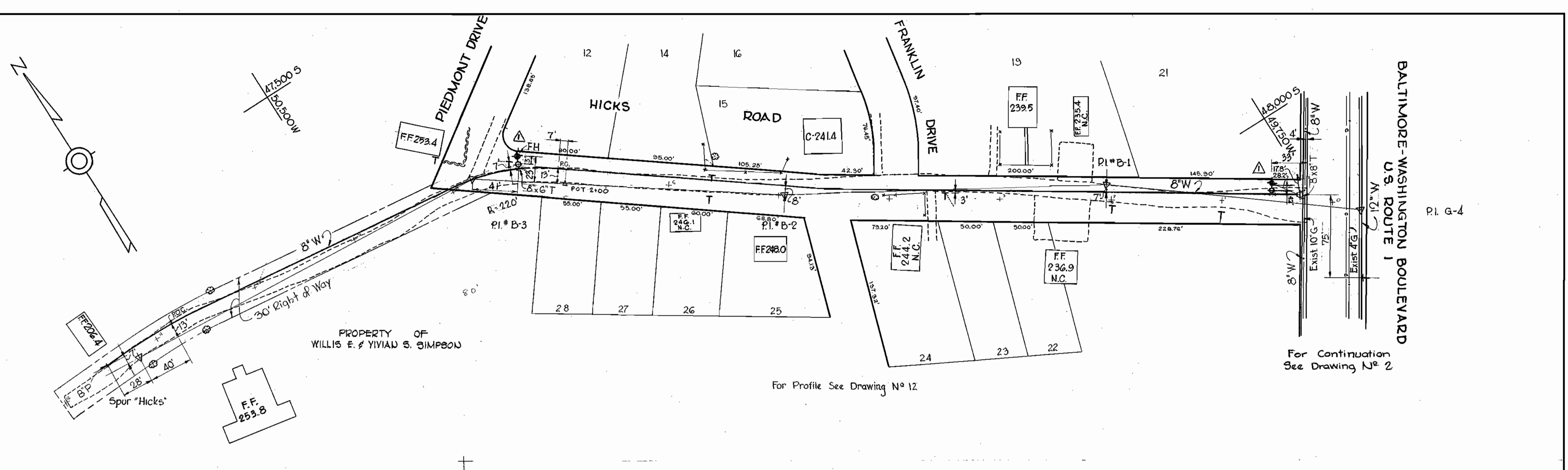
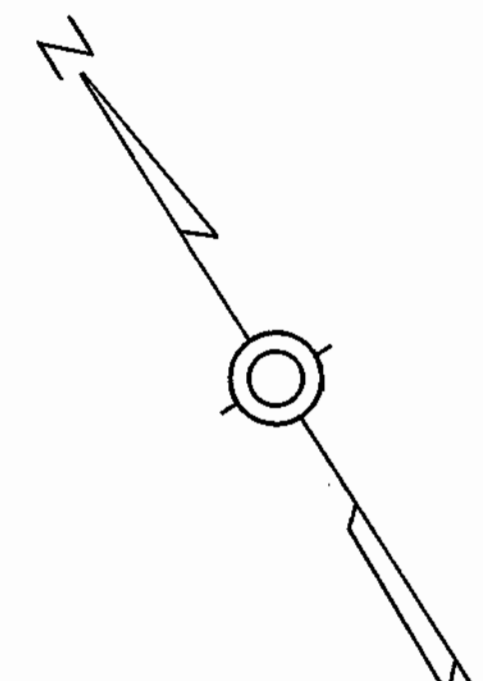
BALTIMORE - WASHINGTON BOULEVARD U.S. ROUTE 1

<p>WHITMAN, REQUARDT & ASSOCIATES ENGINEERS 1304 ST. PAUL ST. BALTIMORE, MARYLAND</p>	<p>HOWARD COUNTY METROPOLITAN COMMISSION July 15, 1964 DATE <i>W. O. 5353-2</i> CHIEF ENGINEER</p>	<p>CONTRACT NO. 76W</p>	<p>PLAN OF WATER MAINS</p>	<p>GUILFORD SUB-DISTRICT</p>	<p>DRAWING NO. 6 OF 13</p>	<p>SCALE 1"=50' 46.47.48 5W 34 3136</p>
---	--	-------------------------	--------------------------------	------------------------------	------------------------------------	---

W. O. 5353-2

AS BUILT Feb 22, 1966

FB. 3136, 3121 3136



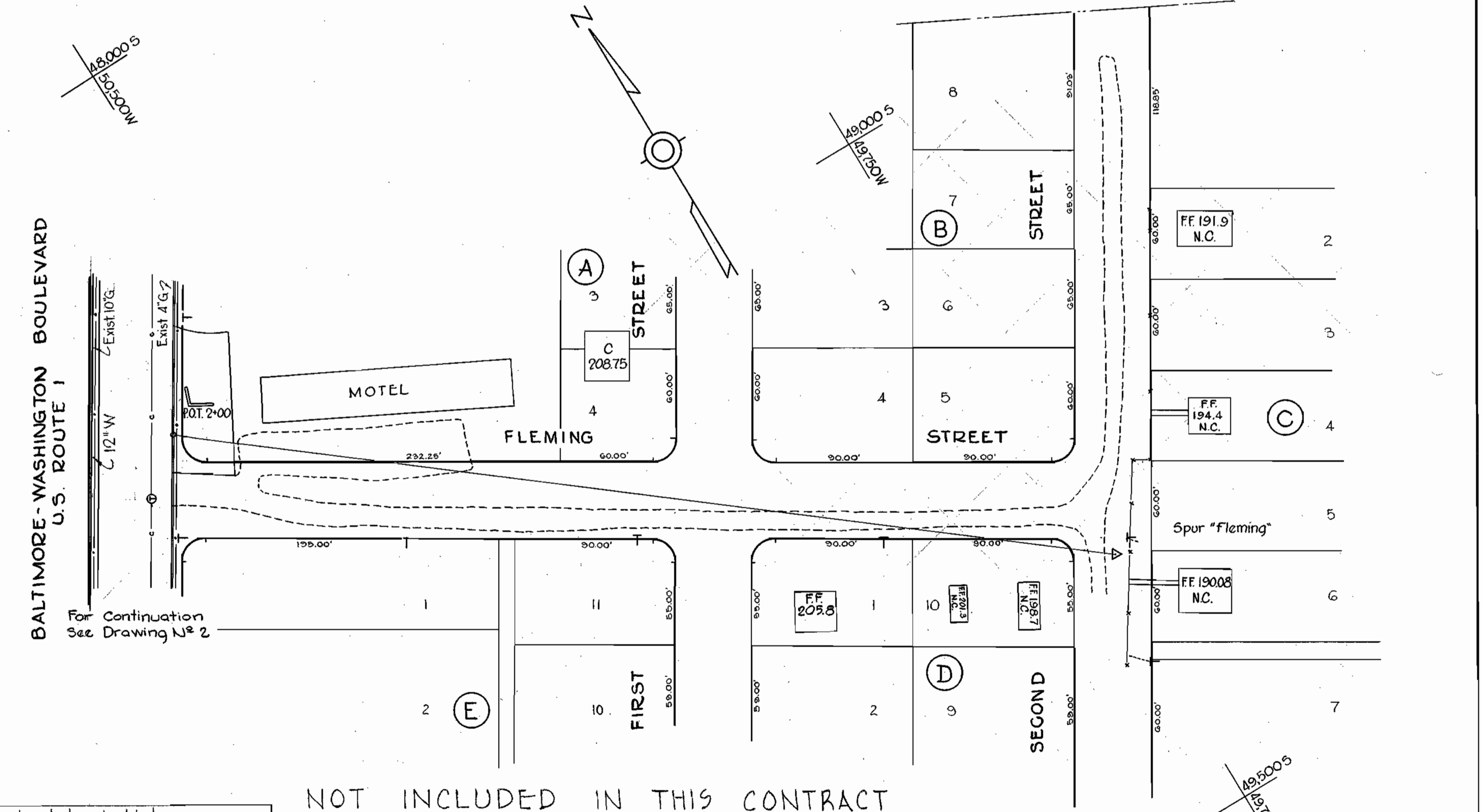
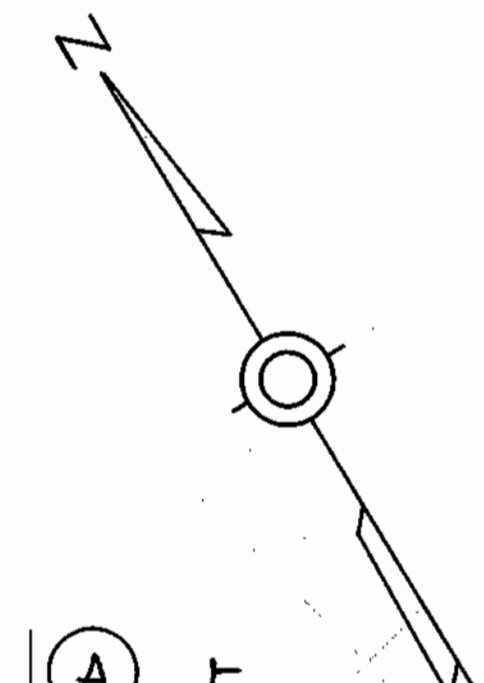
PROPERTY OF
WILLIS E. & YVIAN S. SIMPSON

For Profile See Drawing N^o 12

For Continuation
See Drawing N^o 2

BALTIMORE-WASHINGTON BOULEVARD
U.S. ROUTE 1

P.I. G-4



For Continuation
See Drawing N^o 2

NOT INCLUDED IN THIS CONTRACT

1	10-21-64	Fire hydrant relocated and added.
N ^o	Date	Revision

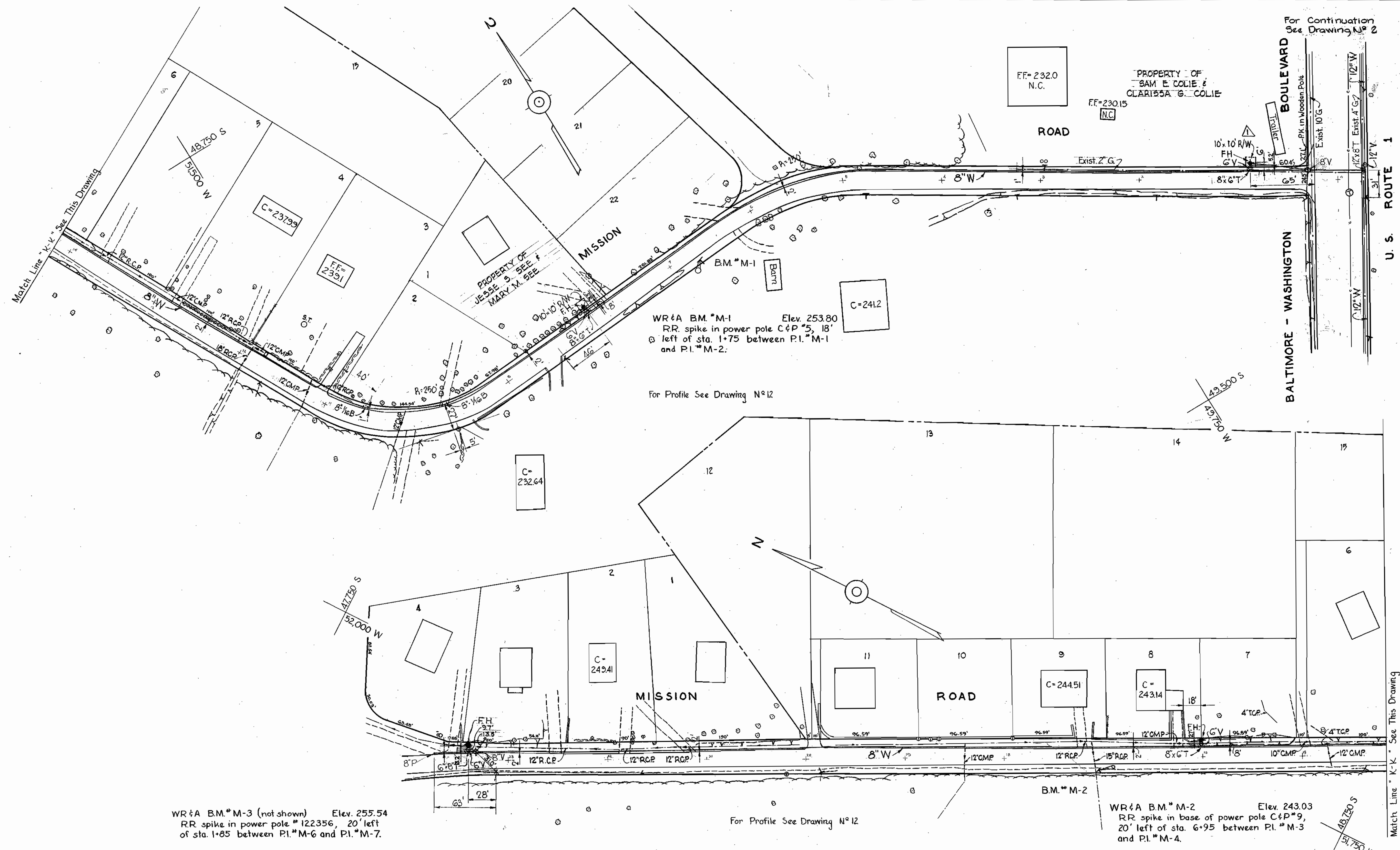
Contract N^o 76W

WHITMAN, REQUARDT & ASSOCIATES ENGINEERS 1304 ST. PAUL ST. BALTIMORE, MARYLAND	HOWARD COUNTY METROPOLITAN COMMISSION July 15, 1964 DATE <i>W. O. West</i> CHIEF ENGINEER	CONTRACT NO. <u>76W</u>	PLAN OF WATER MAINS	GUILFORD SUB-DISTRICT	DRAWING NO. <u>7</u> OF <u>13</u>	SCALE 1"=50'	Contract N ^o 76W
							AS BUILT Feb. 22, 1966

W. O. 5353-2

AS BUILT Feb. 22, 1966

WS 76W/7



N°	Date	Revision
1	11-2-64	Fire hydrant relocated

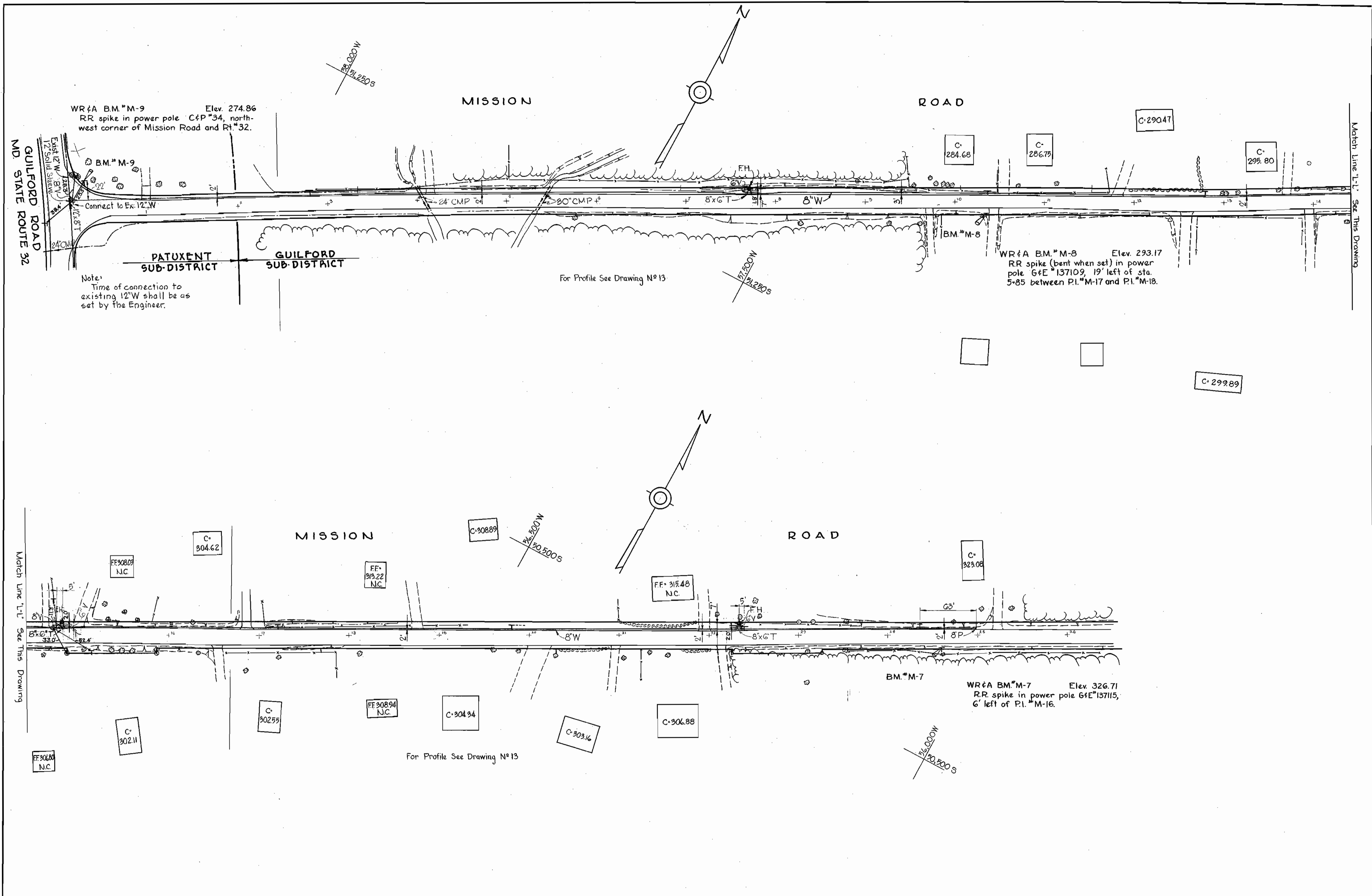
WHITMAN, REQUARDT & ASSOCIATES ENGINEERS 1304 ST. PAUL ST. BALTIMORE, MARYLAND	HOWARD COUNTY METROPOLITAN COMMISSION July 15, 1964 DATE <i>W.O. Eilert</i> CHIEF ENGINEER	CONTRACT NO. 76W	PLAN OF WATER MAINS	GUILFORD SUB-DISTRICT	DRAWING NO. 8 OF 13	SCALE 1"=50'
					AS BUILT Feb. 22, 1966	

W.O. 5353-2

Contract N° 76W
FB 314,312
340

WS 76W/8

WS 76W/9



WHITMAN, REQUARDT & ASSOCIATES
ENGINEERS
1304 ST. PAUL ST.
BALTIMORE, MARYLAND

HOWARD COUNTY METROPOLITAN COMMISSION
July 15, 1964
DATE

CONTRACT NO. 76W

PLAN OF
WATER MAINS

GUILFORD SUB-DISTRICT

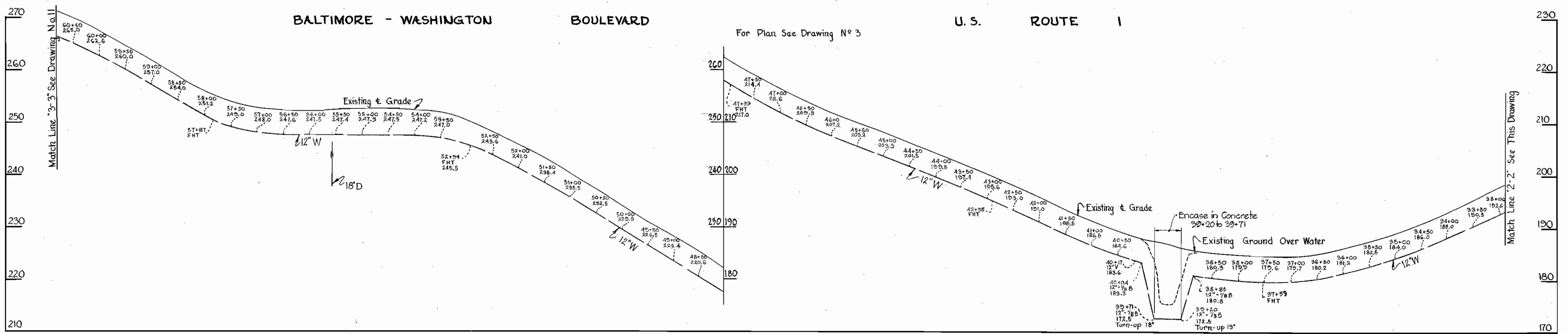
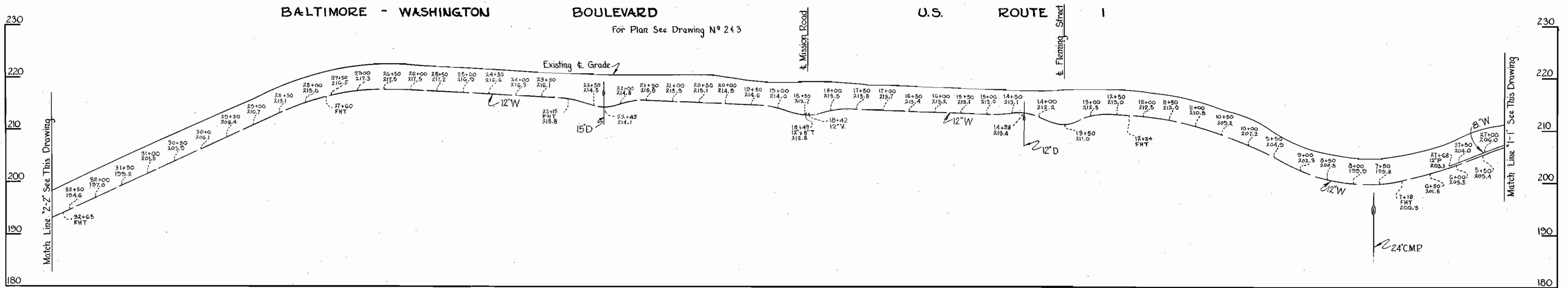
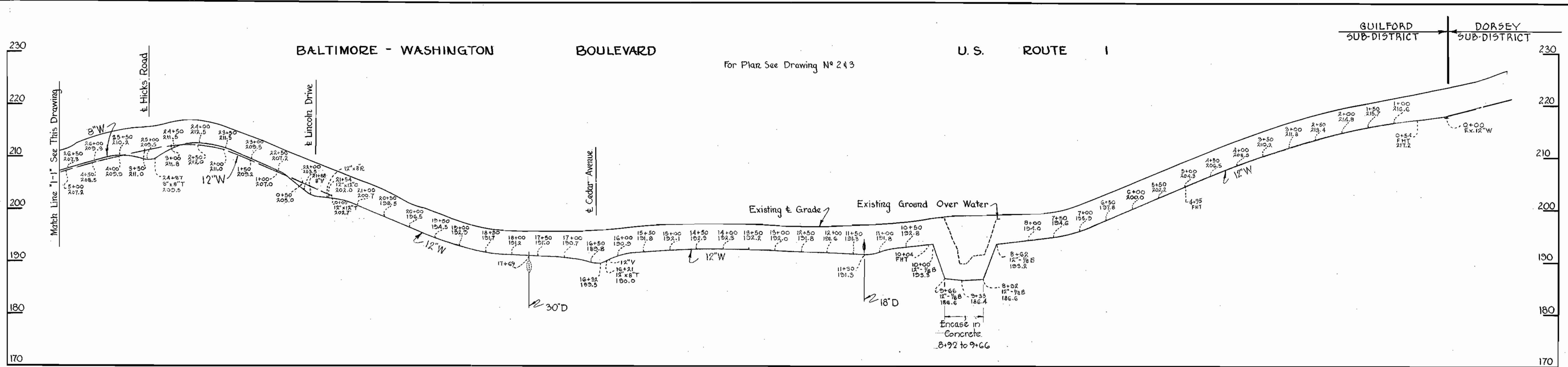
DRAWING NO. 9 OF 13
SCALE 1"=50'

Contract No. 76W

W. O. 5593-2

AS BUILT Feb. 22, 1966

F.B. 3123 3140



Contract No. 76W

WHITMAN, REQUARDT & ASSOCIATES
ENGINEERS
1304 ST. PAUL ST.
BALTIMORE, MARYLAND

HOWARD COUNTY METROPOLITAN COMMISSION
July 13, 1964
DATE
W. O. Fisher
CHIEF ENGINEER

CONTRACT NO. 76W

PROFILES OF
WATER MAINS

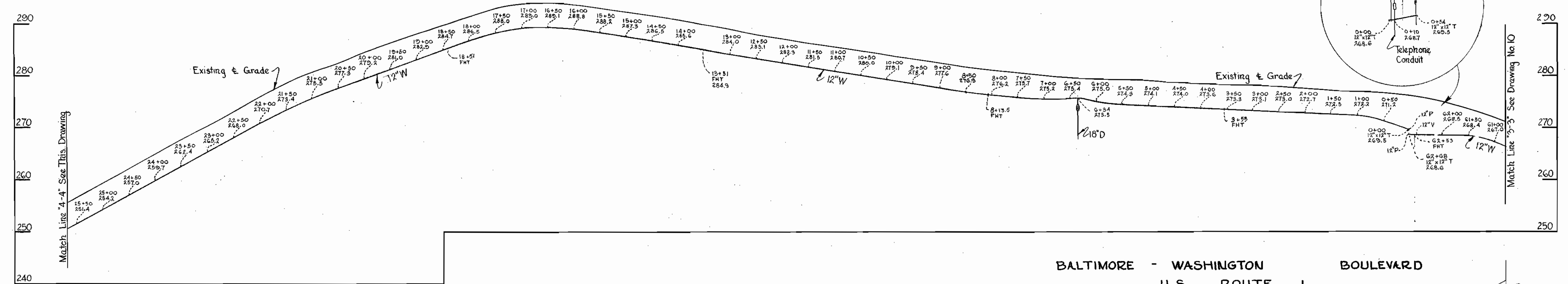
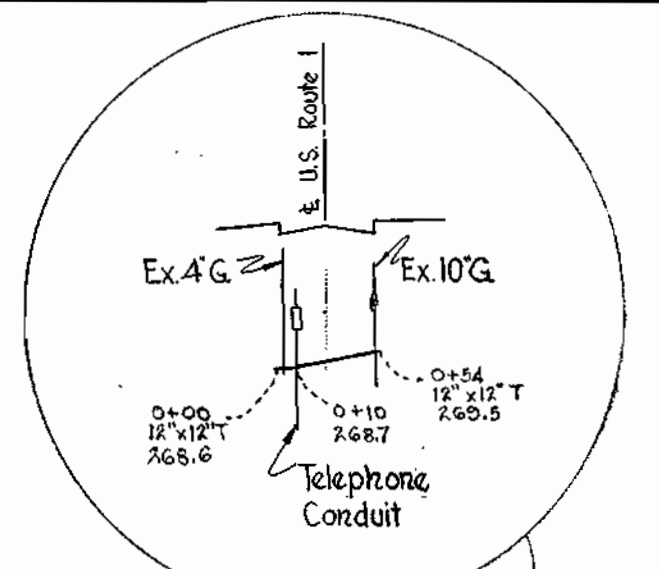
GUILFORD SUB-DISTRICT

DRAWING NO. 10 OF 13
SCALE H:V = 100' : 10'

WS 76W/10

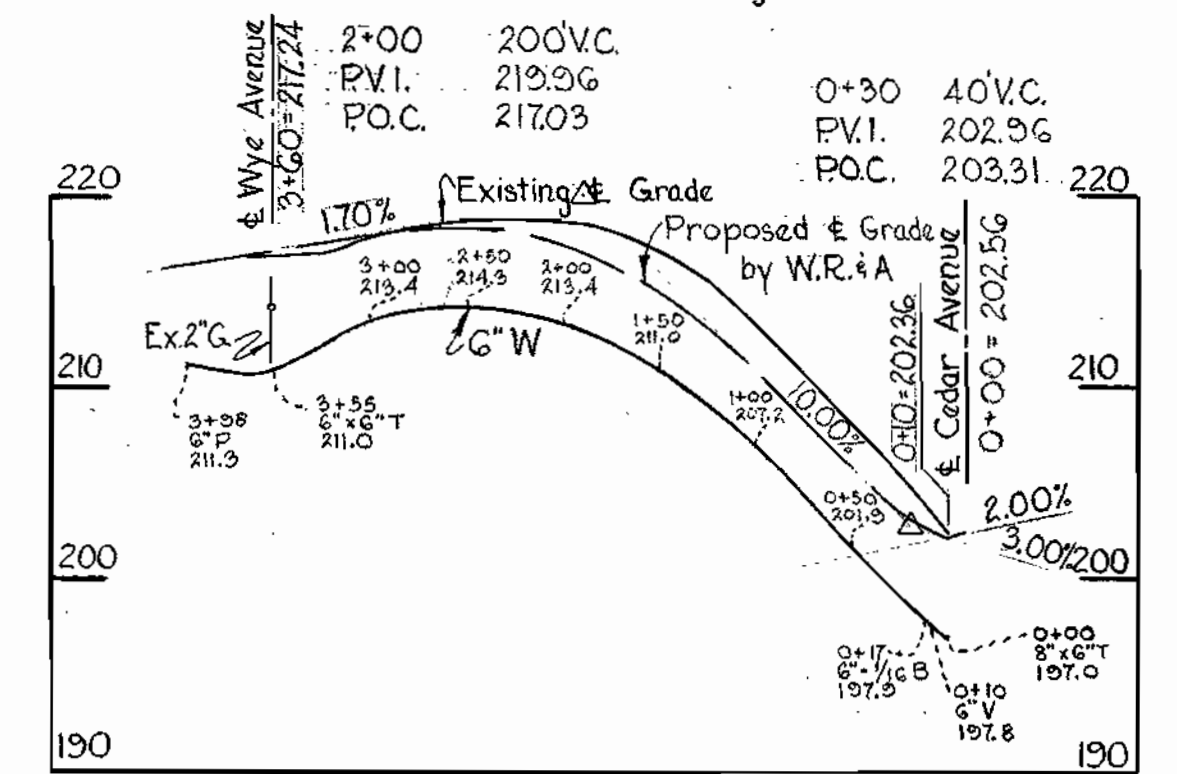
BALTIMORE - WASHINGTON BOULEVARD U.S. ROUTE 1

For Plan See Drawing N° 344



DONALD AVENUE

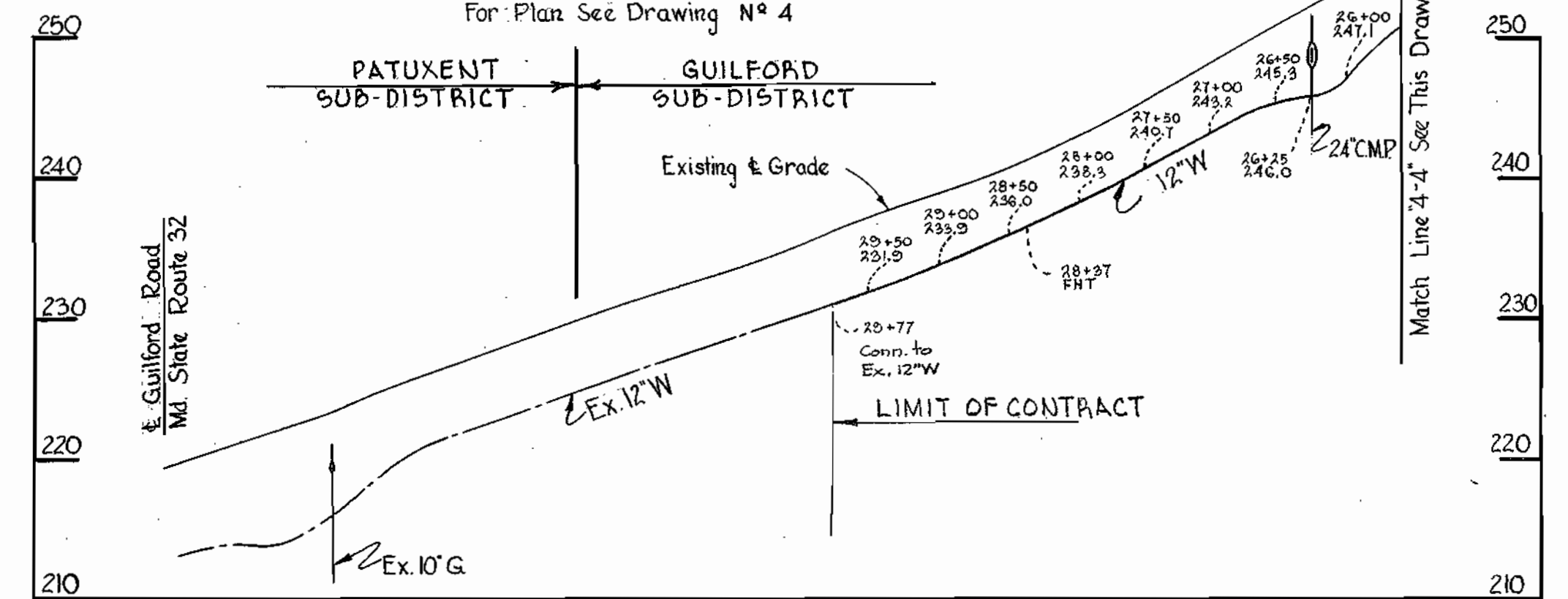
For Plan See Drawing N° 5



BALTIMORE - WASHINGTON BOULEVARD

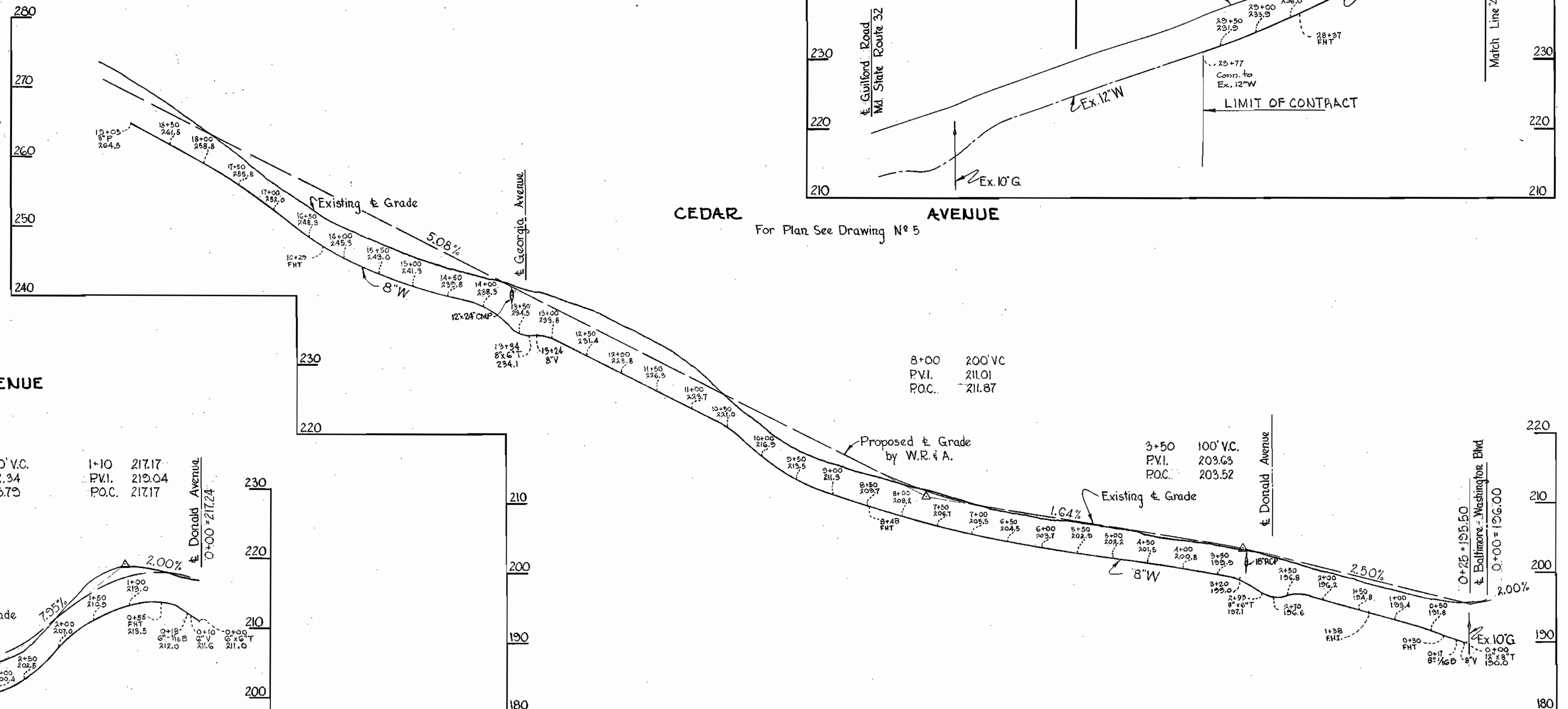
U.S. ROUTE 1

For Plan See Drawing N° 4



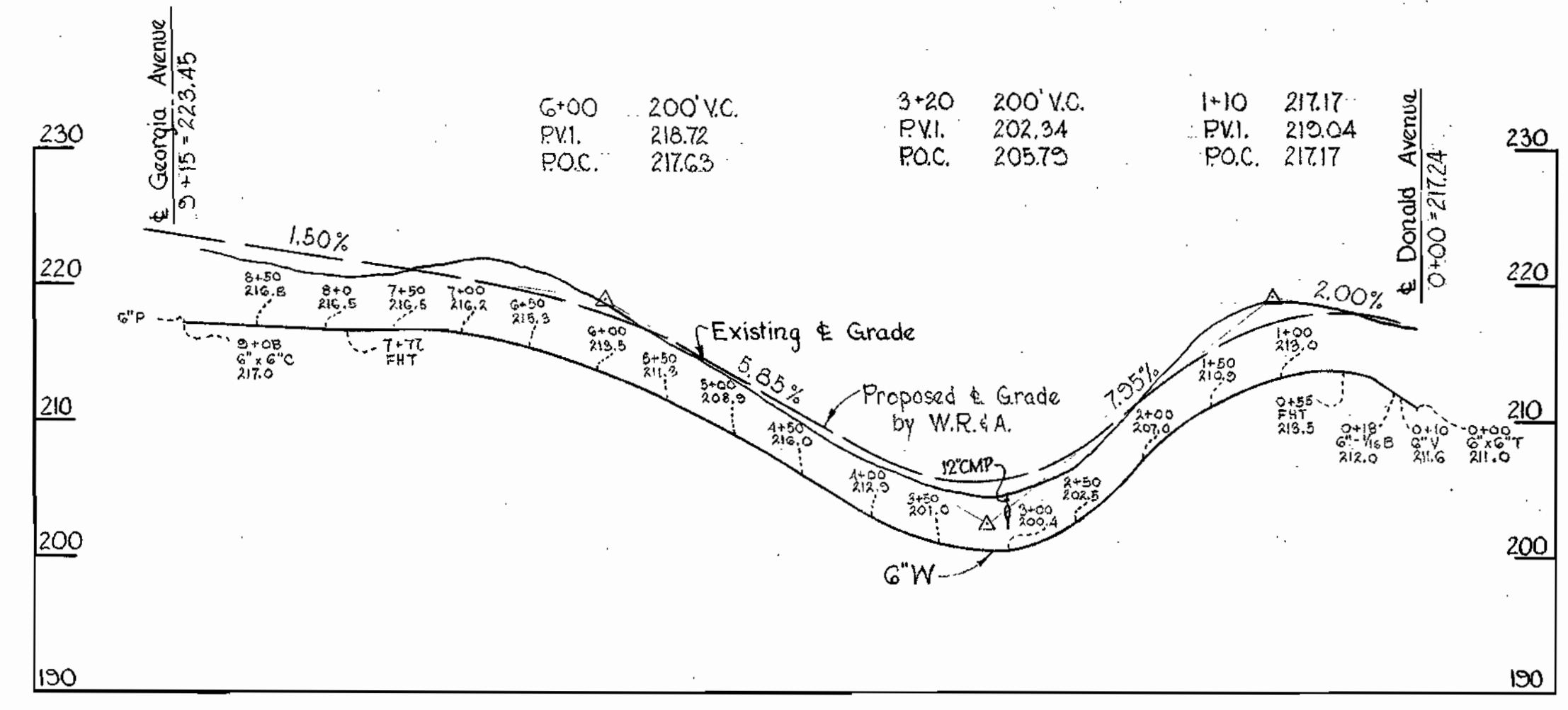
CEDAR AVENUE

For Plan See Drawing N° 5



WYE AVENUE

For Plan See Drawing N° 5



WHITMAN, REQUARDT & ASSOCIATES
ENGINEERS
1304 ST. PAUL ST.
BALTIMORE, MARYLAND

HOWARD COUNTY METROPOLITAN COMMISSION
July 15, 1964
DATE

CONTRACT NO. 76W

PROFILES OF WATER MAINS

GUILFORD SUB-DISTRICT

DRAWING NO. 11 OF 13

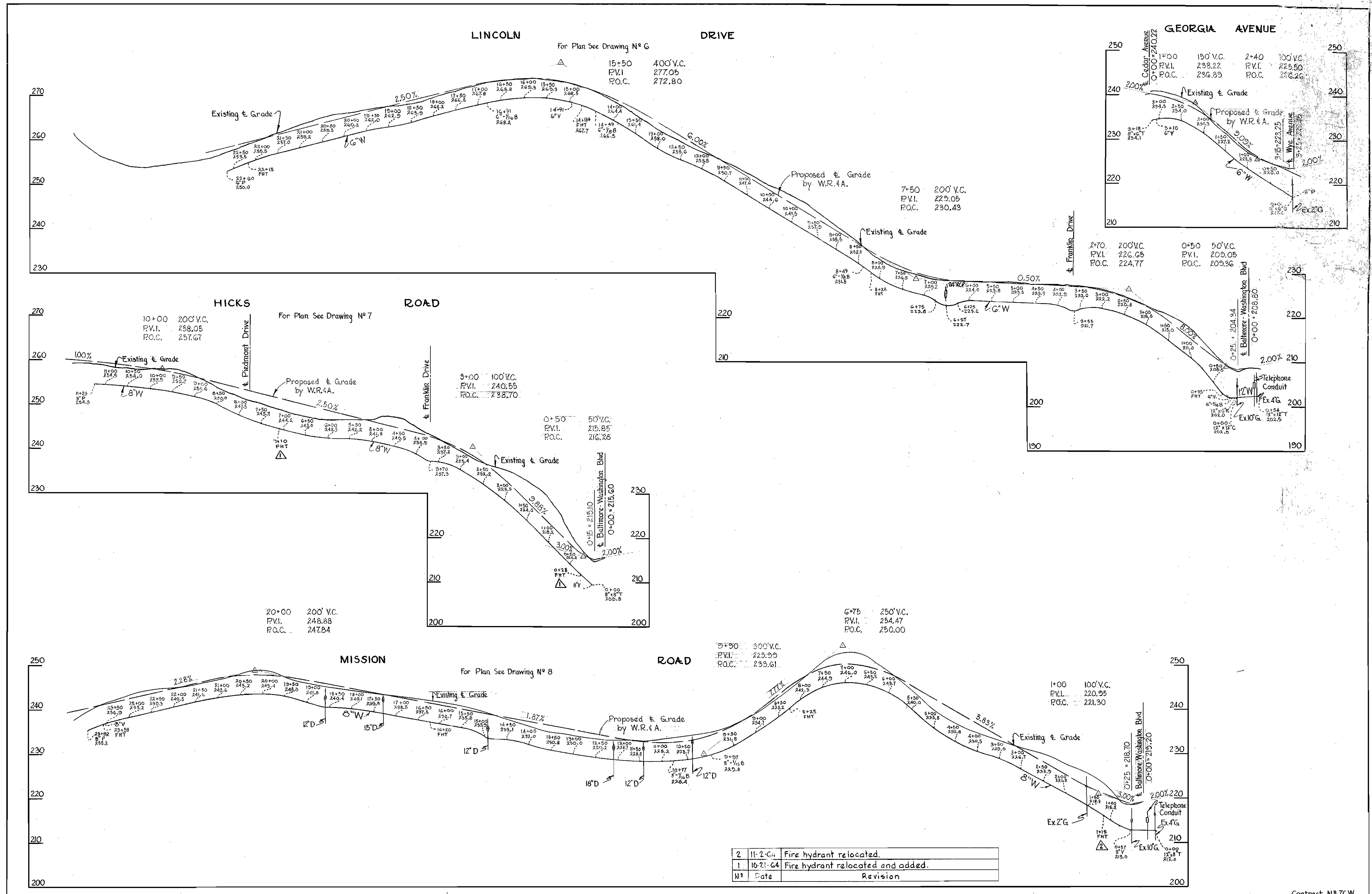
SCALE H:V = 100' V:1" = 10'

Contract N° 76W

AS BUILT Feb 22, 1966

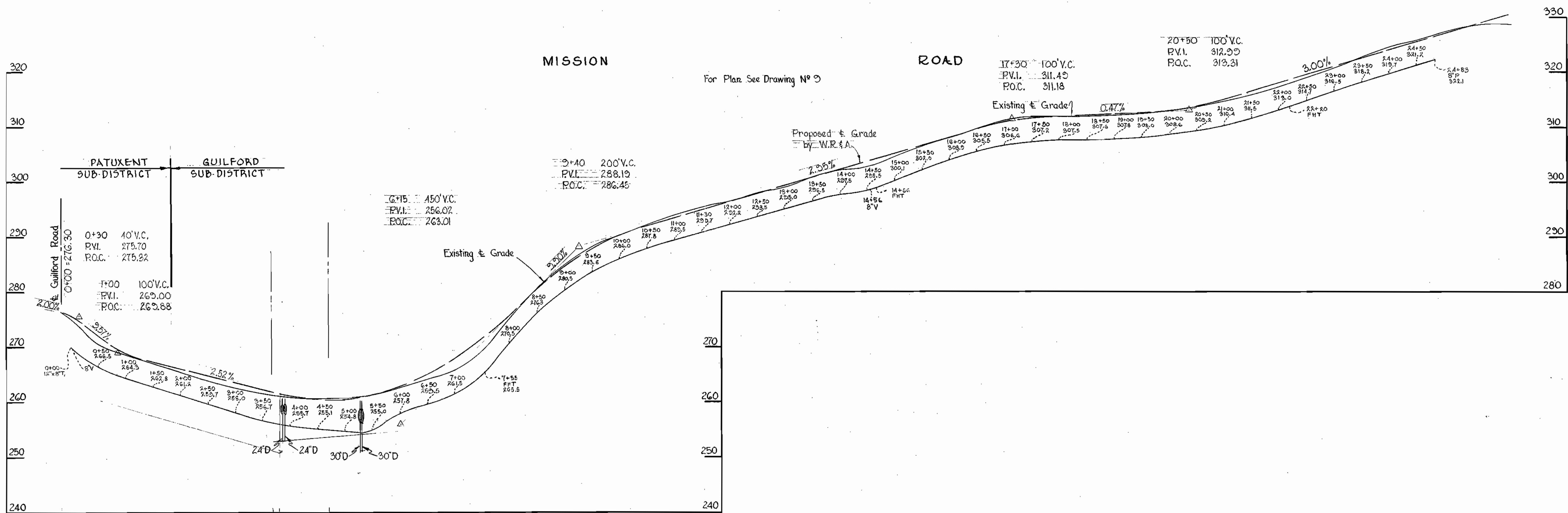
WS 76W/11

WS 76W/12



2	11-2-64	Fire hydrant relocated.
1	10-21-64	Fire hydrant relocated and added.
N°	Date	Revision

WHITMAN, REQUARDT & ASSOCIATES ENGINEERS 1304 ST. PAUL ST. BALTIMORE, MARYLAND	HOWARD COUNTY METROPOLITAN COMMISSION July 13, 1964 DATE	W. O. Fildes CHIEF ENGINEER	CONTRACT NO. 76W	PROFILES OF WATER MAINS	GUILFORD SUB-DISTRICT	DRAWING NO. 12 OF 13	SCALE H:V = 100' V:1" = 10'	Contract N° 76W
---	--	--------------------------------	------------------	----------------------------	-----------------------	----------------------------	-----------------------------------	-----------------



WHITMAN, REQUARDT & ASSOCIATES
ENGINEERS
1304 ST. PAUL ST.
BALTIMORE, MARYLAND

HOWARD COUNTY METROPOLITAN COMMISSION

July 15, 1964
DATE

W. O. Gilbert
CHIEF ENGINEER

CONTRACT NO. 76 W

PROFILES OF
WATER MAINS

GUILFORD SUB-DISTRICT

DRAWING
NO. 13
OF 13

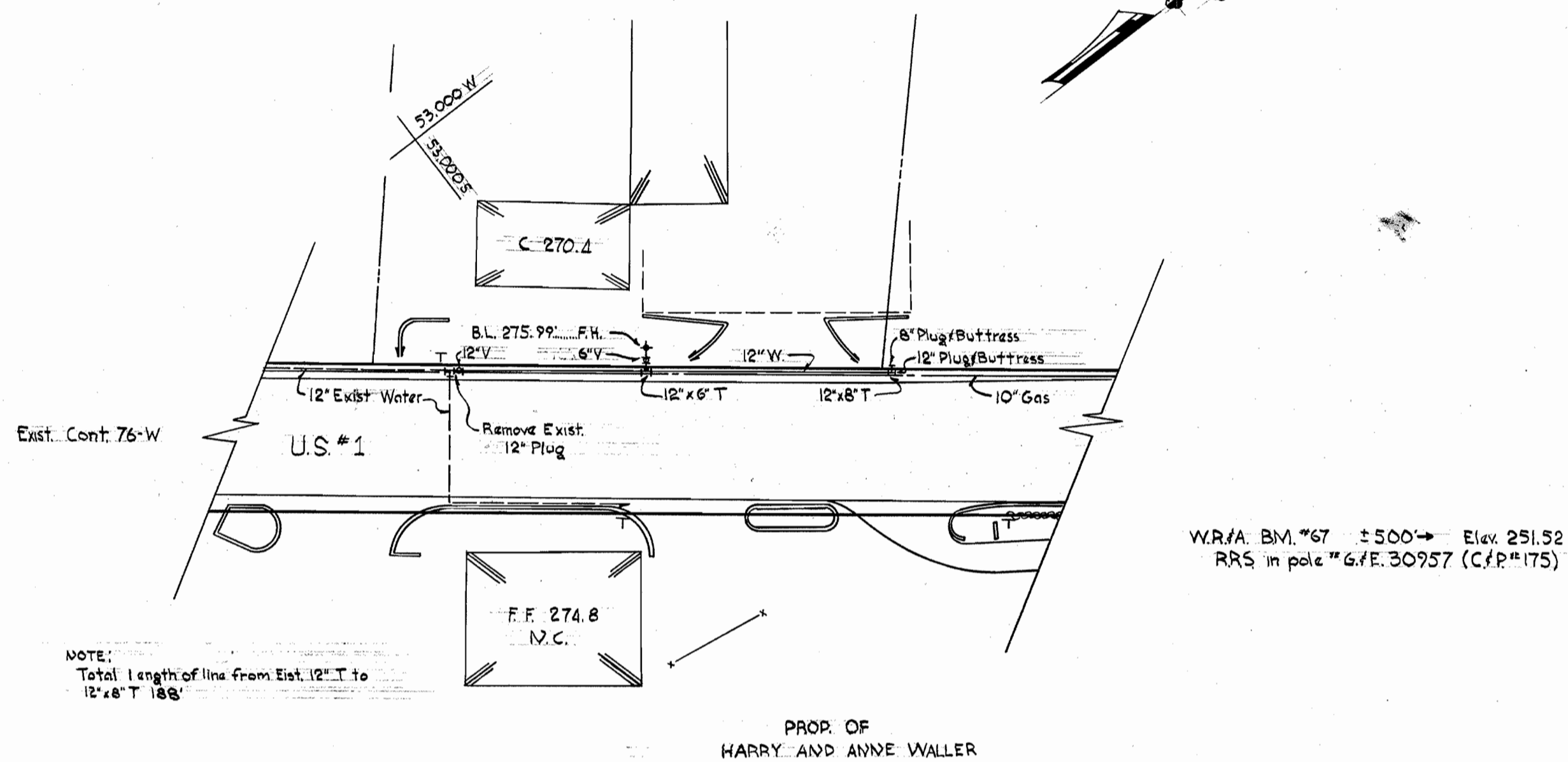
SCALE
H: 1" = 10'
V: 1" = 10'

Contract N° 76W

W. O. 5353-2

AS BUILT. Feb 22, 1966

WS 76/13



NOTE:
Total length of line from Est. 12\"/>

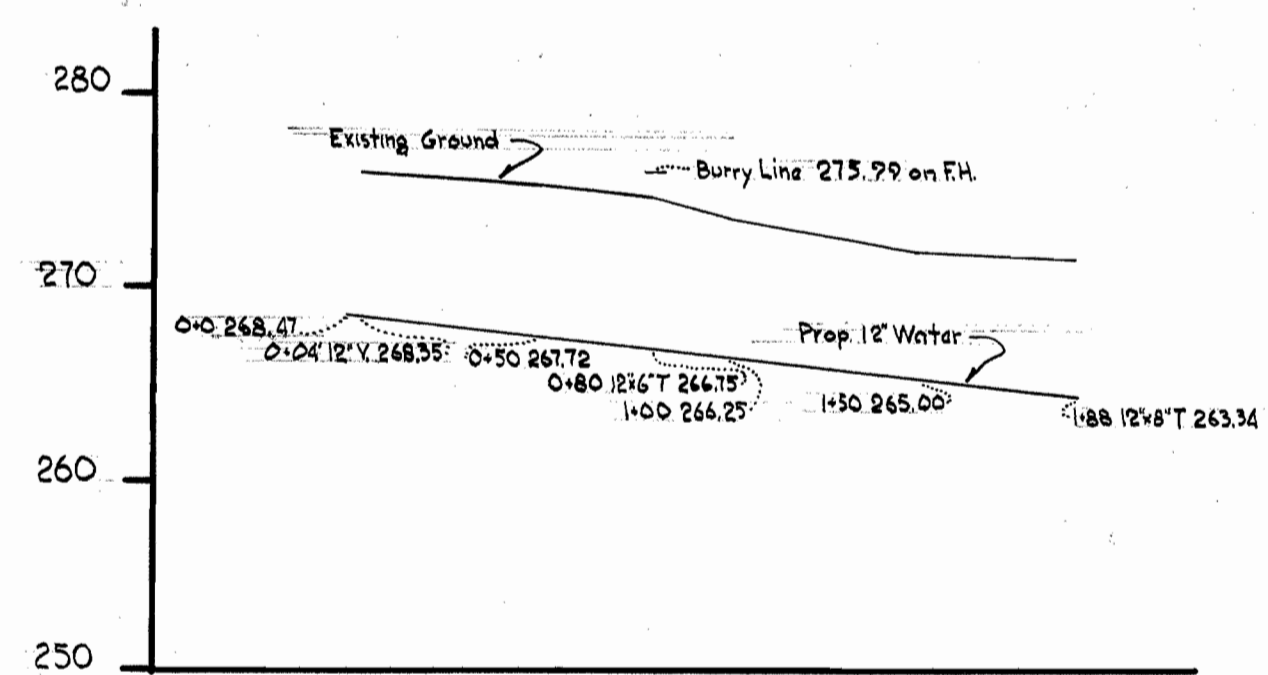
PROP. OF
HARRY AND ANNE WALLER

W.R.M. BM. #67 ± 500 → Elev. 251.52
RRS in pole #6/E. 30957 (C/P #175)

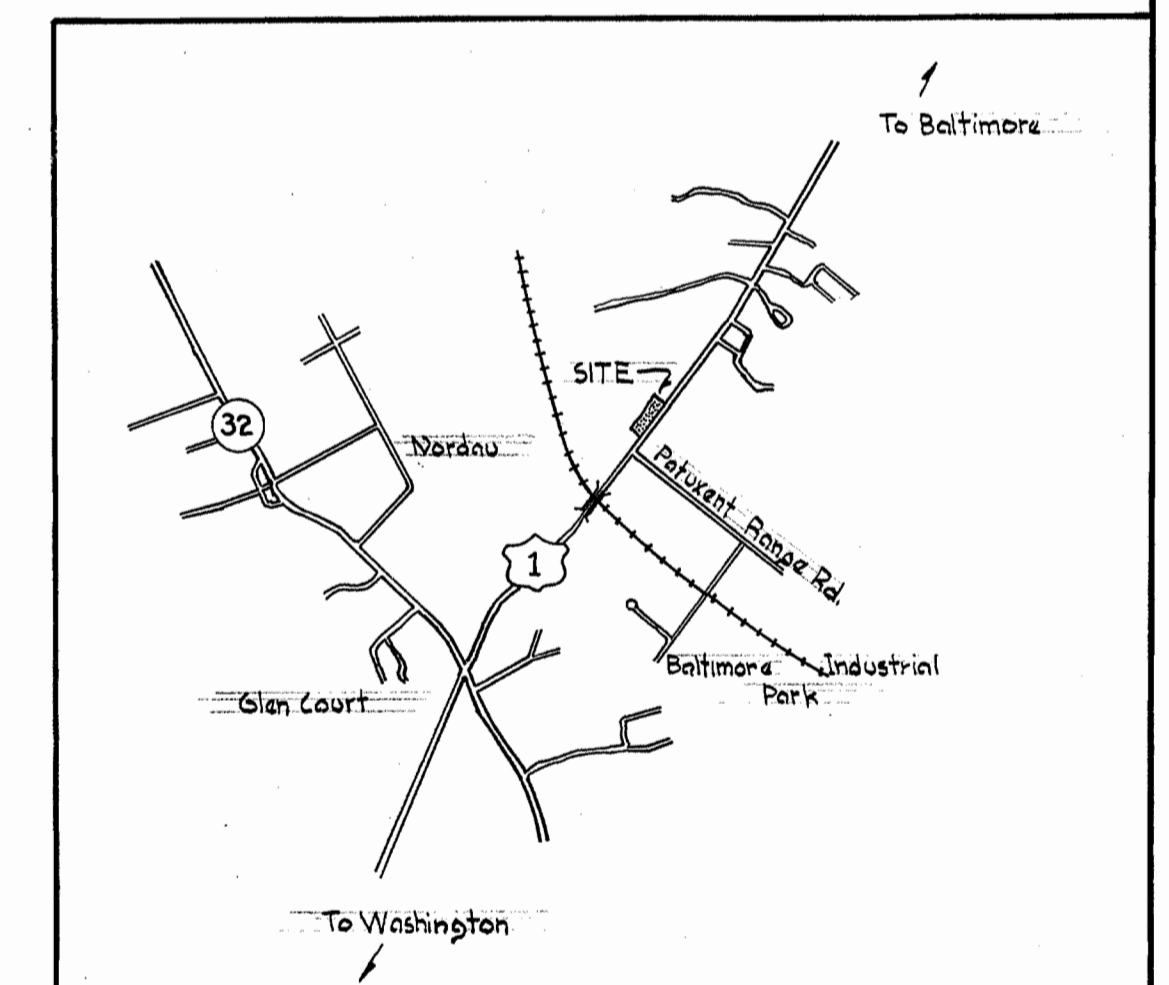
PLAN
Scale: 1" = 50'

GENERAL NOTES

1. Approximate location of existing mains are shown. The Contractor shall take all necessary precautions to protect the existing mains and services and maintain uninterrupted supply. Any damage incurred shall be repaired immediately.
2. All pipe elevations shown are invert elevations.
3. The Contractor shall locate existing utilities a minimum of two weeks in advance of construction operations in vicinity of utilities.
4. For all standard details see standards bound in Specifications.
5. All water mains to be C.I.P. Class 22 and have a minimum of 3 1/2' cover.
6. Block all fitting with concrete, see standard details bound in specifications.
7. Bury line elevation on fire hydrants shall be set the same as edge of paving or as directed by the Engineer in the field.
8. Buttress Fire Hydrant with concrete.
9. Clear all poles by 2.0' min. Clear all utilities by a 6" min.



PROFILE
Scale: Horz. 1" = 50'
Vert. 1" = 10'



VICINITY MAP
Scale: 1" = 2000'

BUREAU OF ENGINEERING
INSPECTION AND SURVEY DIVISION

DEPARTMENT OF PUBLIC WORKS
HOWARD COUNTY, MARYLAND

CONTRACT NO. 76-W-A

PLAN AND PROFILE
OF WATER MAINS

ELECTION DISTRICT
GUILFORD - 6

DRAWING
NO. 1
OF 1

SCALE
AS
SHOWN

WS 76W-A/1