

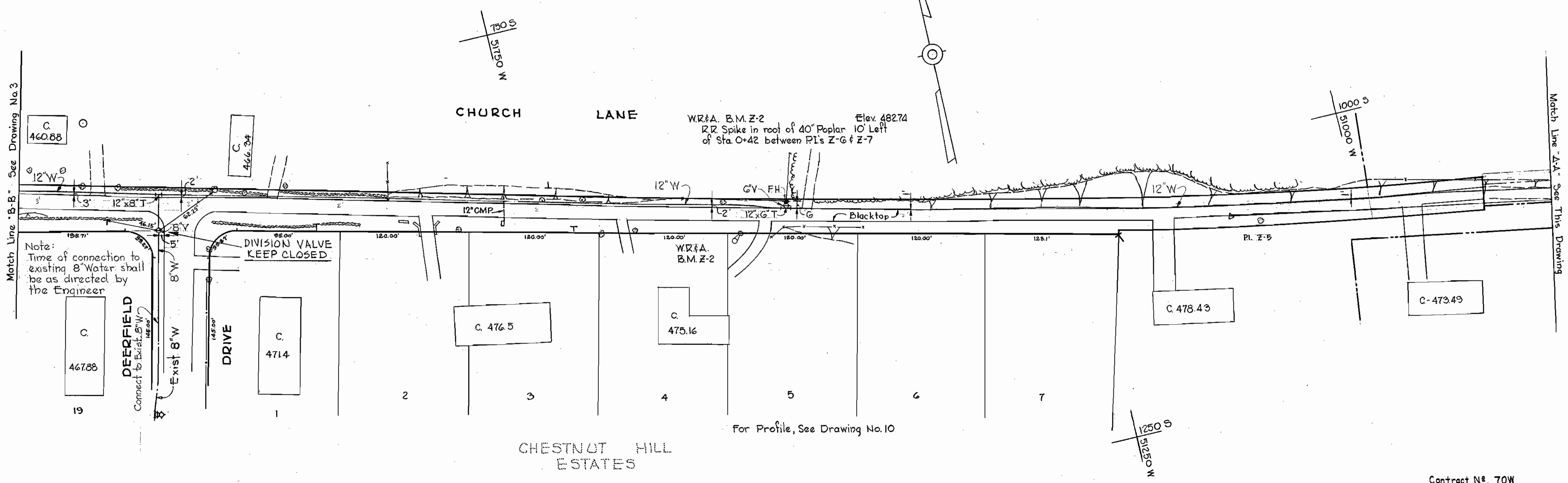
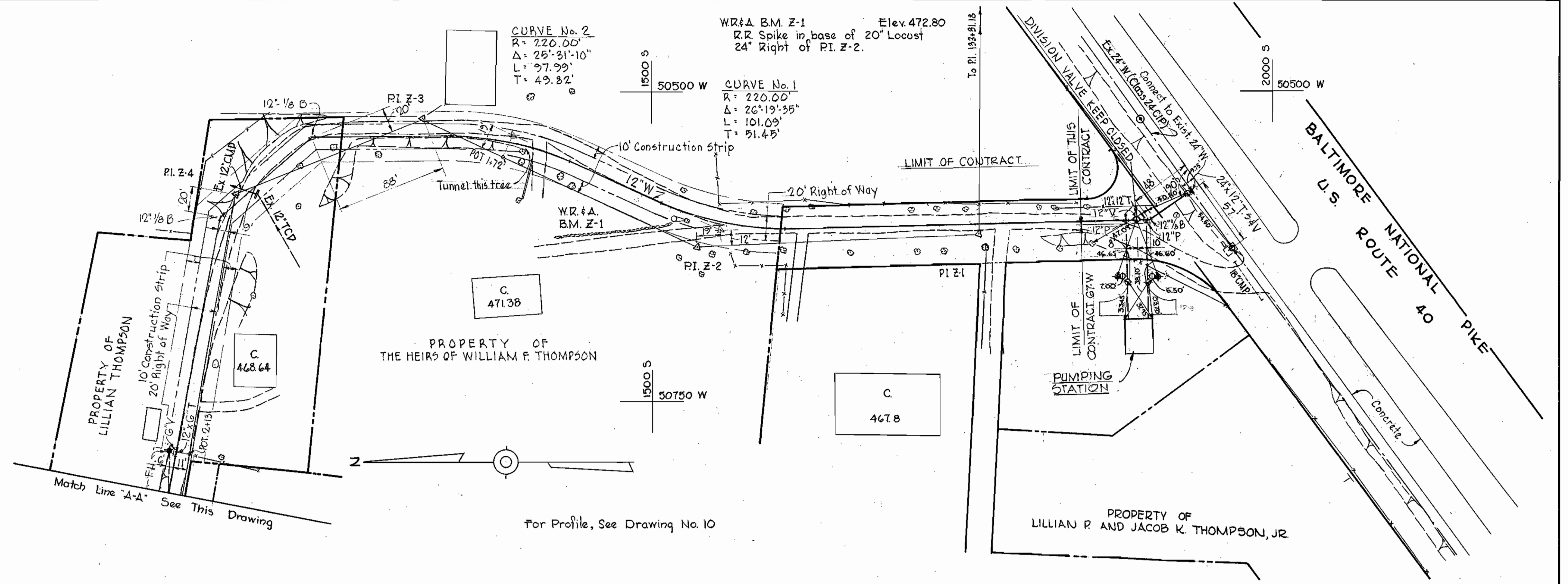
CONTRACT 70W
WATER MAIN EXTENSIONS
HOWARD COUNTY METROPOLITAN COMMISSION
ELLICOTT CITY SUB-DISTRICT

WHITMAN, REQUARDT & ASSOCIATES ENGINEERS 1304 ST. PAUL ST. BALTIMORE, MARYLAND	HOWARD COUNTY METROPOLITAN COMMISSION Jan. 3, 1964 <i>Carl W. Meyer</i> DATE CHIEF ENGINEER	CONTRACT NO. <u>70W</u>	LOCATION MAP OF WATER MAIN EXTENSIONS	ELLICOTT CITY SUB-DISTRICT	DRAWING NO. <u>1</u> OF <u>13</u>	SCALE 1"=800'
---	--	-------------------------	--	----------------------------	--------------------------------------	------------------

W. O. 5918-2

AS BUILT 5 OCT. 65

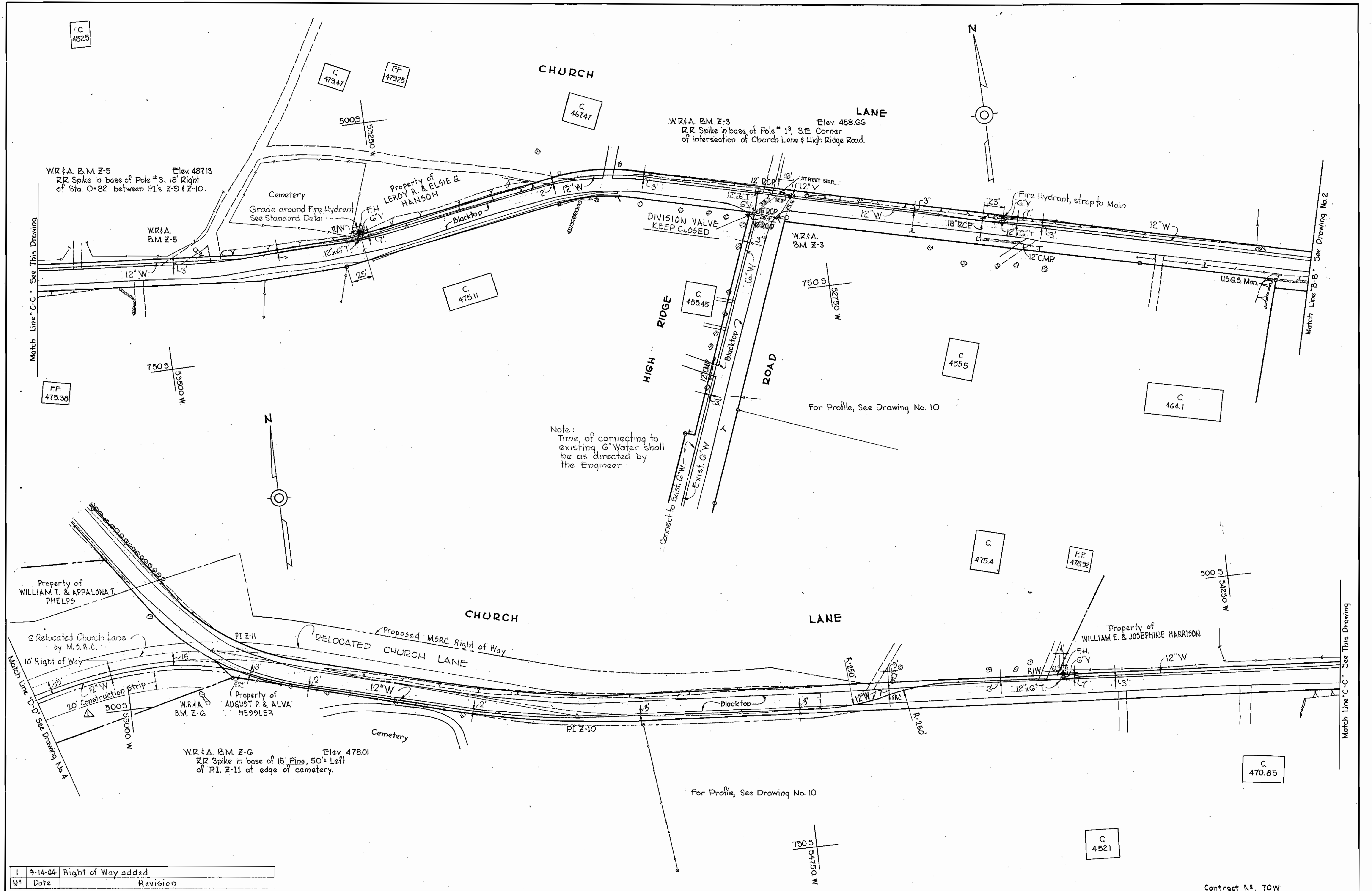
WS 70W/1



WHITMAN, REQUARDT & ASSOCIATES ENGINEERS 1304 ST. PAUL ST. BALTIMORE, MARYLAND	HOWARD COUNTY METROPOLITAN COMMISSION Jan 3, 1964 <small>DATE</small> <i>Carl E. Meyer</i> <small>CHIEF ENGINEER</small>	CONTRACT NO. 70W	PLAN OF WATER MAINS	ELLICOTT CITY SUB-DISTRICT	Contract No. 70W DRAWING NO. 2 OF 13 SCALE 1"=50' <small>25W34 15W35 35W34 25W35</small> <small>FB 5010</small>
---	--	------------------	------------------------	----------------------------	---

W. O. 5518-2 AS BUILT 5 OCT. 65

WS 70 W/2



Note:
Time of connecting to
existing G.W. shall
be as directed by
the Engineer.

1	9-14-64	Right of Way added
N ^o	Date	Revision

WHITMAN, REQUARDT & ASSOCIATES
ENGINEERS
1304 ST. PAUL ST.
BALTIMORE, MARYLAND

HOWARD COUNTY METROPOLITAN COMMISSION
Jan 3, 1964
DATE
Carl W. Meyer
CHIEF ENGINEER

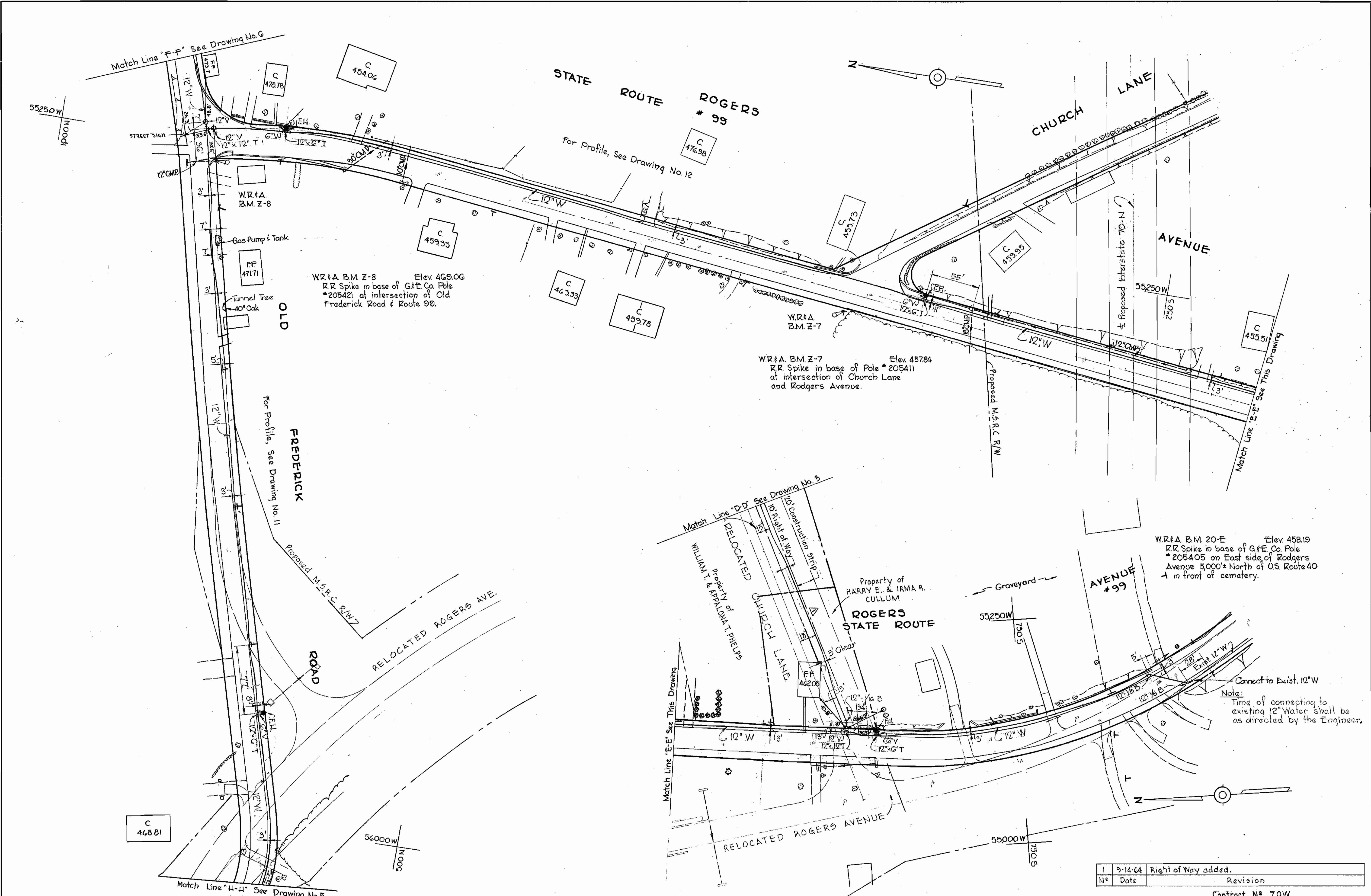
CONTRACT NO. 70W

PLAN OF
WATER MAINS

ELLICOTT CITY SUB-DISTRICT

CONTRACT N^o. 70W
DRAWING NO. 3 OF 13
SCALE 1"=50'
15W35 15W37
15W36
F.B. 3010

WS 70W/3



W.R. & A. B.M. Z-20-E Elev. 458.19
 R.R. Spike in base of G.F.E. Co. Pole
 #205405 on East side of Rogers
 Avenue 5,000' North of US Route 40
 1 in front of cemetery.

Connect to Exist. 12" W
 Note:
 Time of connecting to
 existing 12" Water shall be
 as directed by the Engineer.

No.	Date	Revision
1	9-14-64	Right of Way added.

Contract No. 70W

WHITMAN, REQUARDT & ASSOCIATES
 ENGINEERS
 1304 ST. PAUL ST.
 BALTIMORE, MARYLAND

HOWARD COUNTY METROPOLITAN COMMISSION
 Jan. 3, 1964
Carl W. Meyer
 CHIEF ENGINEER

CONTRACT NO. 70W

PLAN OF
 WATER MAINS

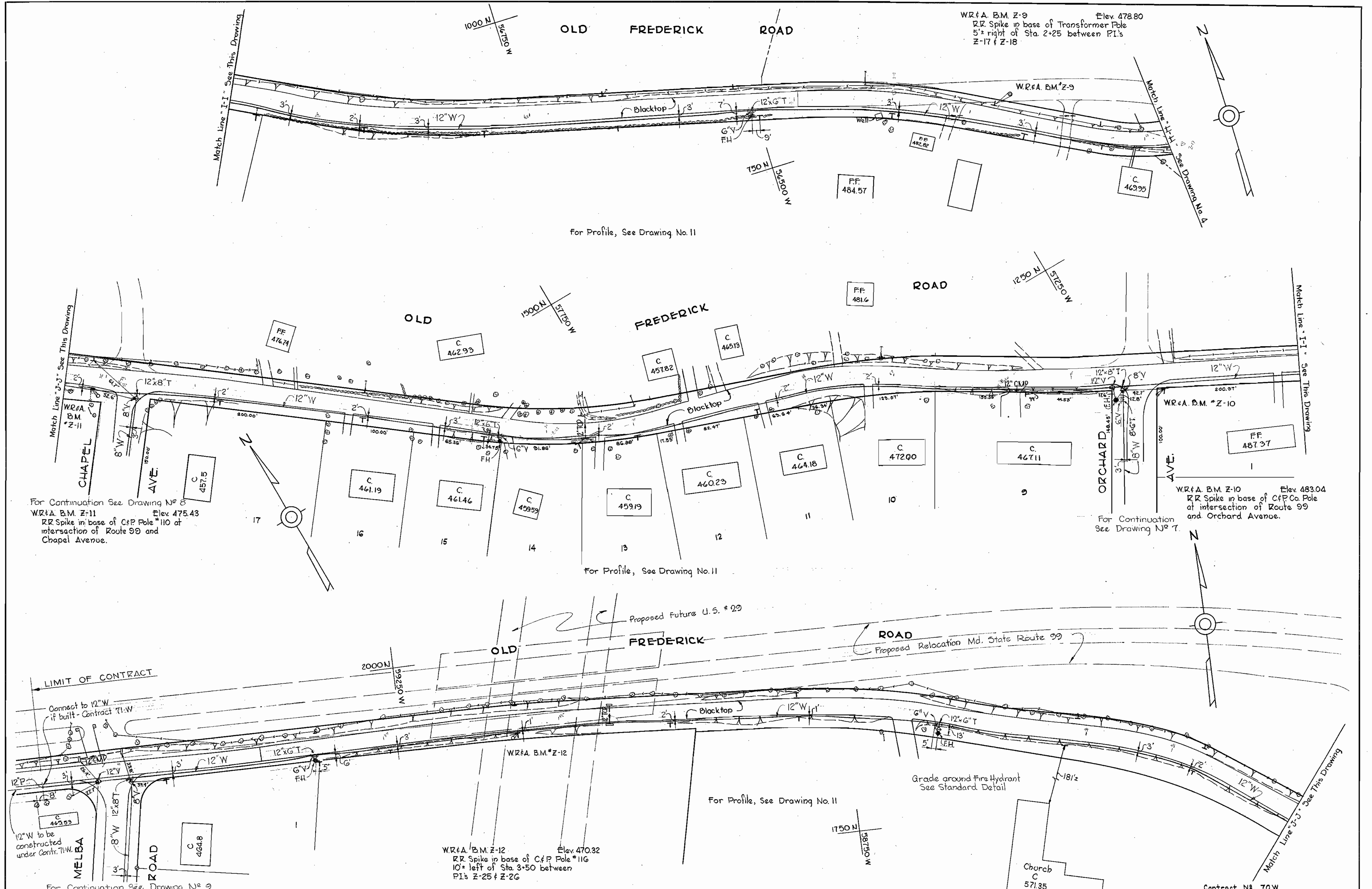
ELLICOTT CITY SUB-DISTRICT

DRAWING
 NO. 4
 OF 13
 SCALE
 1" = 50'

W. O. 5518-2

AS BUILT
 14 SEPT. 66

WS 70W/14



WHITMAN, REQUARDT & ASSOCIATES
ENGINEERS
1304 ST. PAUL ST.
BALTIMORE, MARYLAND

HOWARD COUNTY METROPOLITAN COMMISSION
Jan 3, 1964
DATE
Carl W. Meyer
CHIEF ENGINEER

CONTRACT NO. 70W

PLAN OF
WATER MAINS

ELLCOTT CITY SUB-DISTRICT

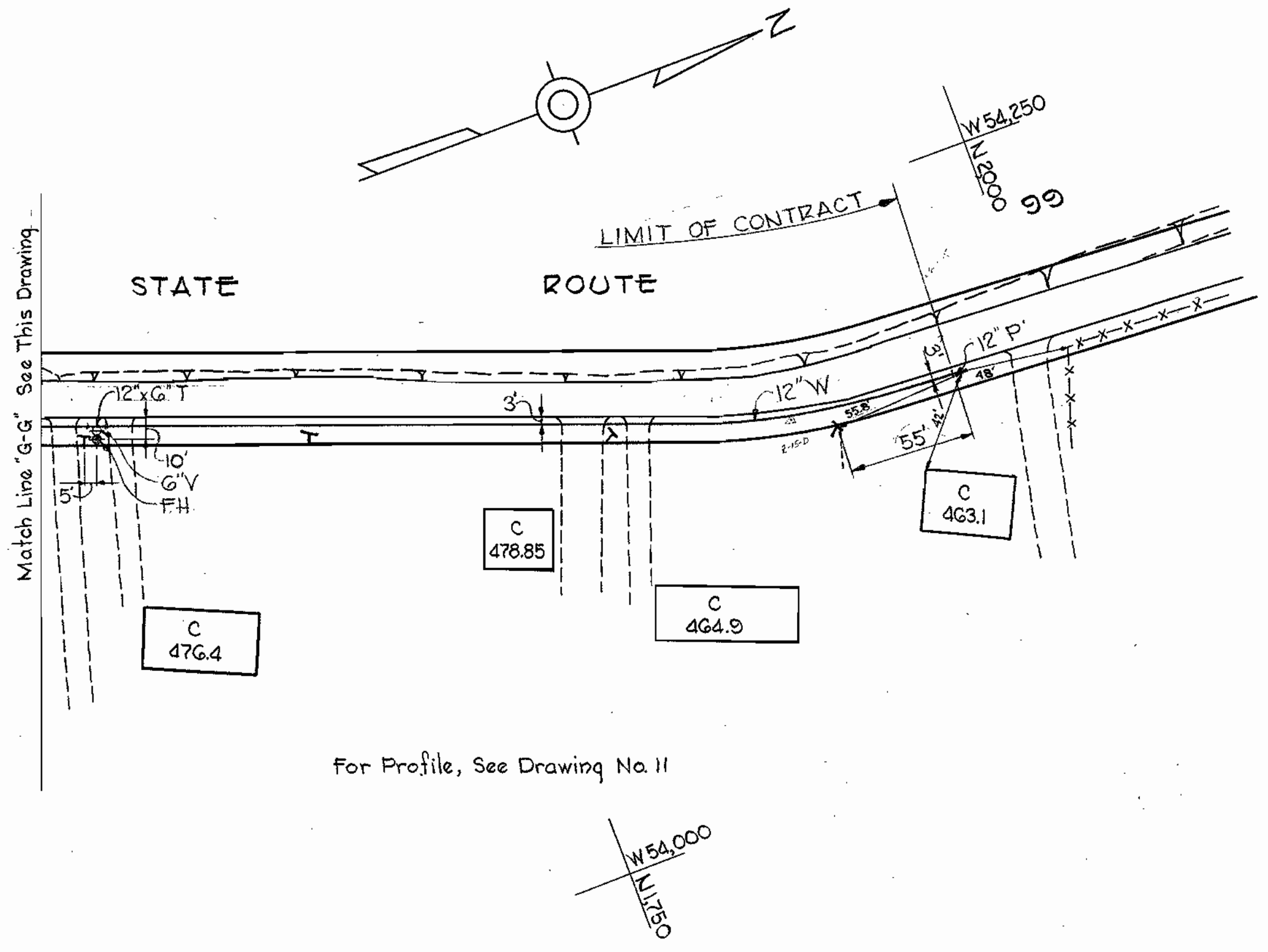
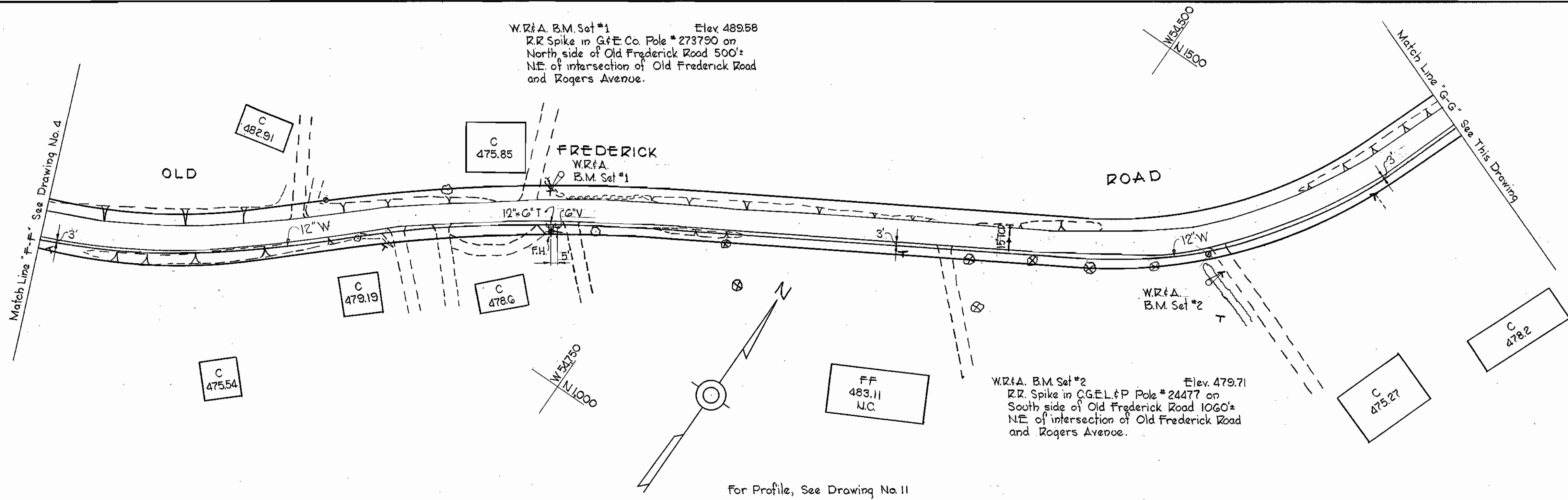
CONTRACT NO. 70W
DRAWING NO. 5
OF 13
SCALE 1"=50'

INW 56 ENW 59
INW 59 ENW 60
PB. 3012, 3015

W. O. 5318-2

AS BUILT - 5 OCT. 65

WS 70W/5



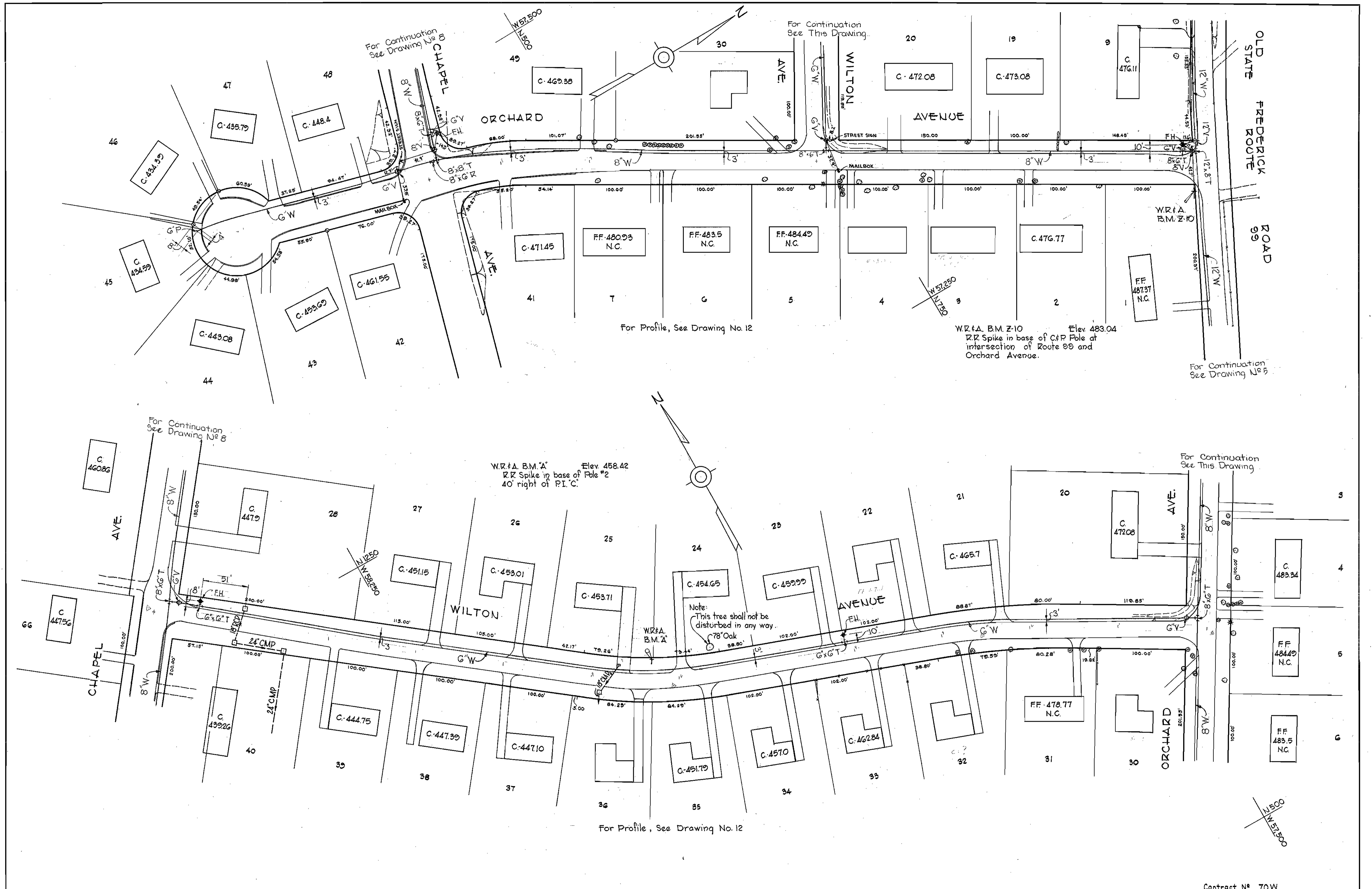
GENERAL NOTES

1. Approximate location of existing mains are shown. The Contractor shall take all necessary precautions to protect the existing mains and services and maintain uninterrupted supply. Any damage incurred shall be repaired immediately.
2. All pipe elevations shown are invert elevations.
3. The Contractor shall locate existing utilities a minimum of two weeks in advance of construction operations in vicinity of utilities.
4. For all standard details, see Standards bound in Specifications.
5. Block all fittings with concrete, see standard details bound in Specifications.
6. Bury Line elevation on Fire Hydrants shall be set the same as edge of paving or as directed by the Engineer in the field.
7. All 6\"/>

WHITMAN, REQUARDT & ASSOCIATES ENGINEERS 1304 ST. PAUL ST. BALTIMORE, MARYLAND	HOWARD COUNTY METROPOLITAN COMMISSION Jan. 3, 1964 <i>Carl W. Meyer</i> CHIEF ENGINEER	CONTRACT NO. 70W	PLAN OF WATER MAINS	ELLICOTT CITY SUB-DISTRICT	DRAWING NO. 6 OF 13	SCALE 1"=50' <small>1"=37' 2"=51'</small>
---	---	------------------	------------------------	----------------------------	---------------------------	---

W. O. 5318-2
AS BUILT 5 OCT. 65

WS 70W/6



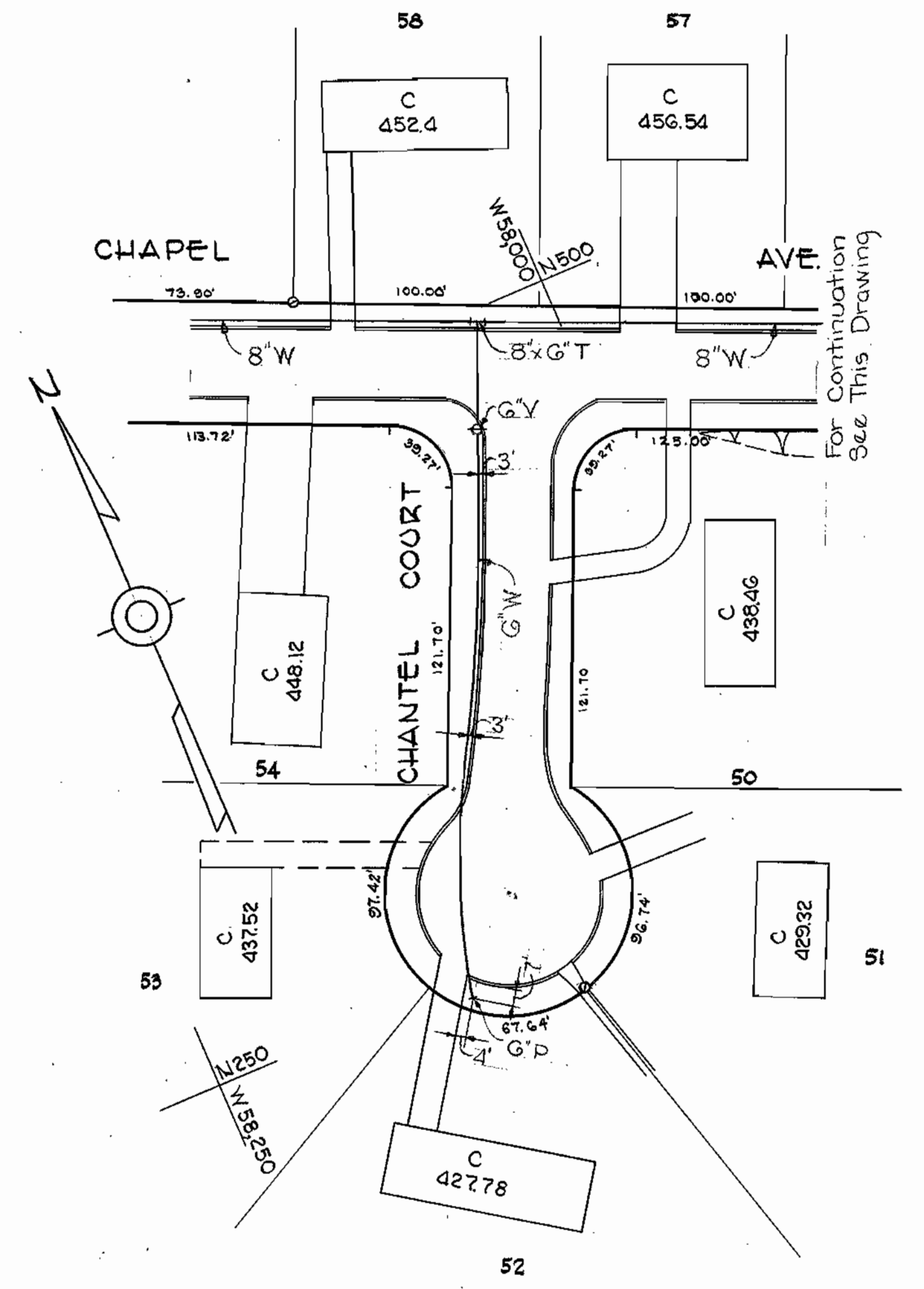
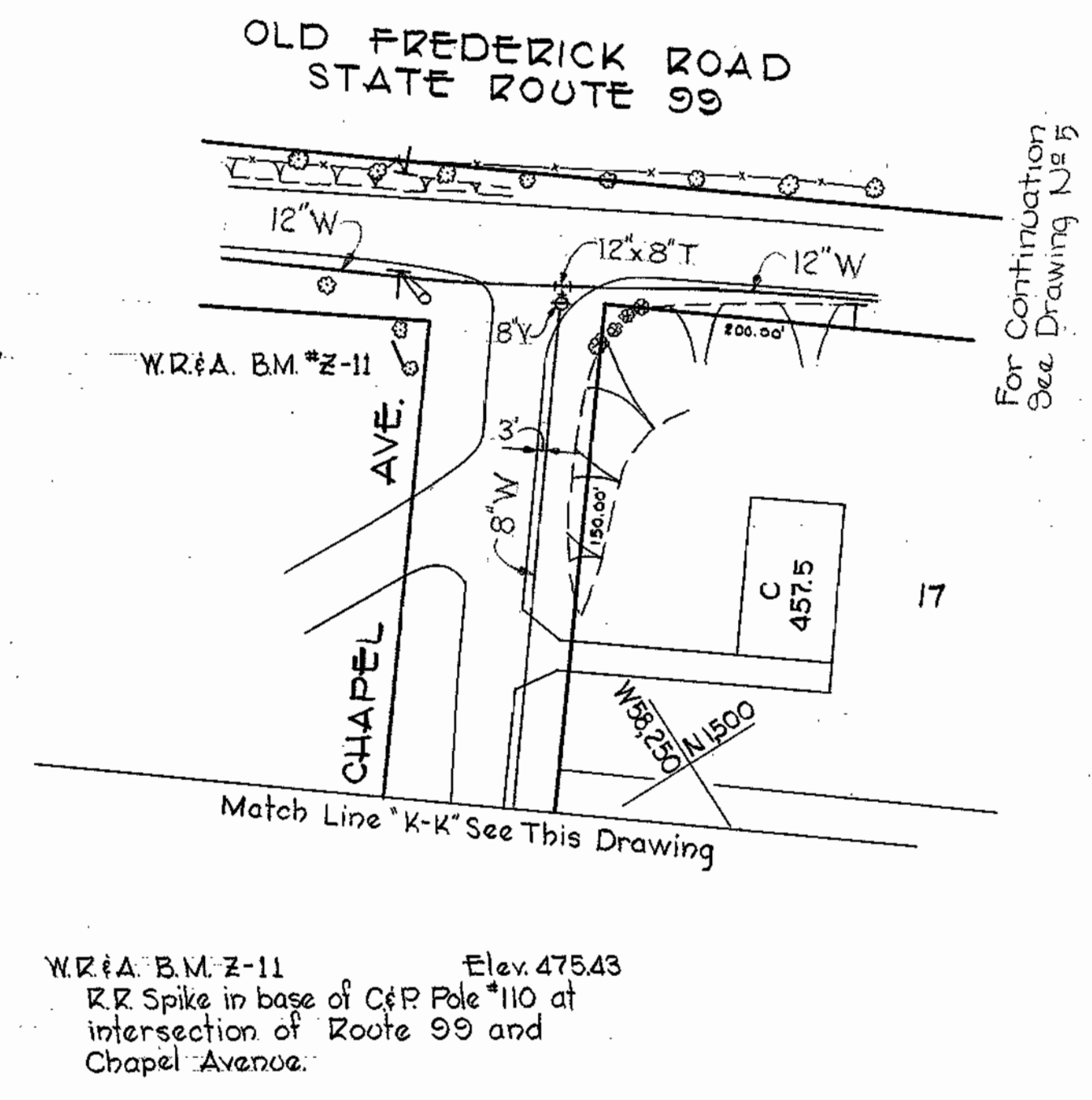
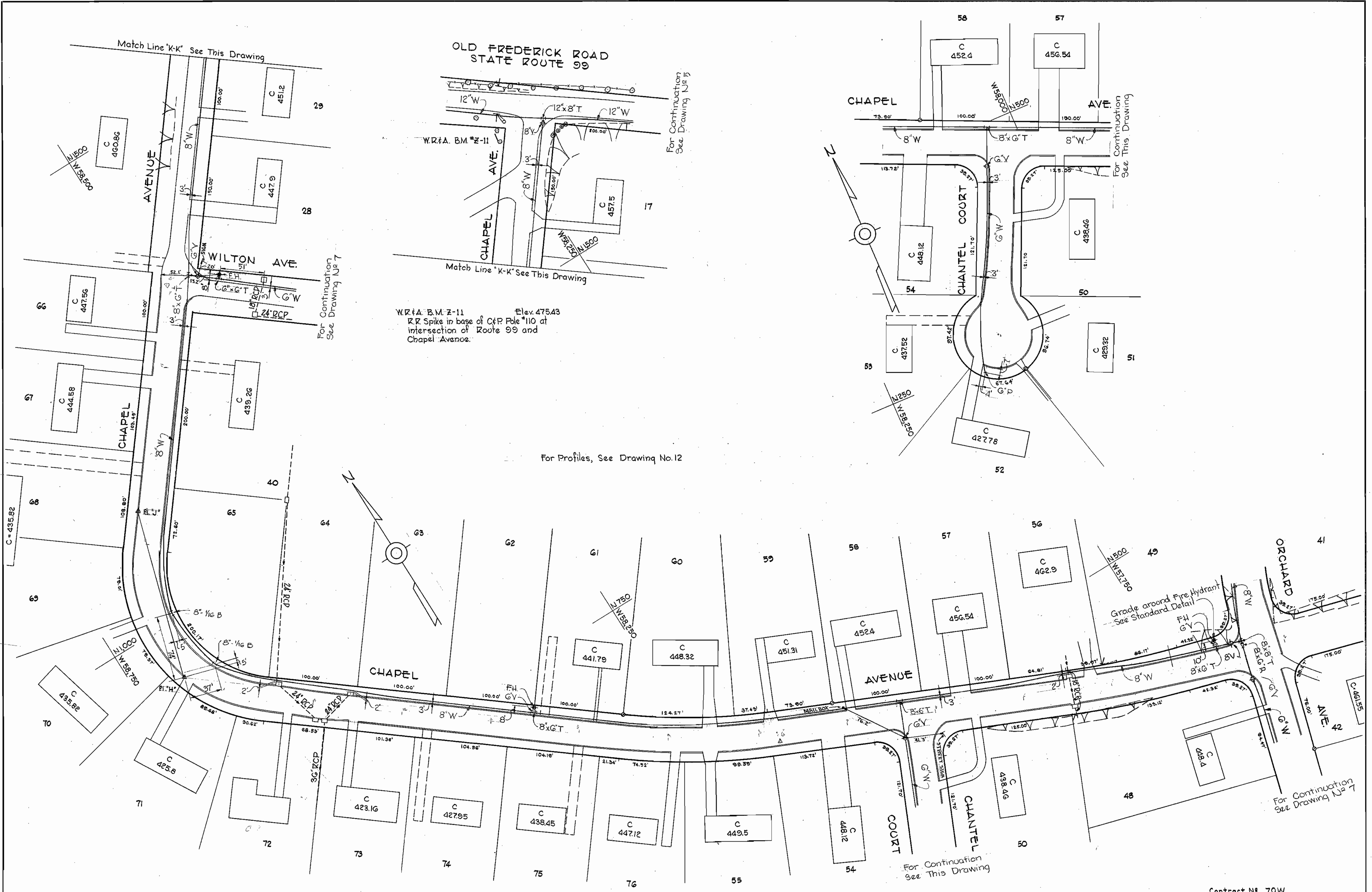
WS 70W/1

WHITMAN, REQUARDT & ASSOCIATES ENGINEERS 1304 ST. PAUL ST. BALTIMORE, MARYLAND	HOWARD COUNTY METROPOLITAN COMMISSION Jan. 3, 1964 <i>Carl W. Meyer</i> CHIEF ENGINEER	CONTRACT NO. 70W	PLAN OF WATER MAINS	ELLICOTT CITY SUB-DISTRICT	Contract No. 70W DRAWING NO. 7 OF 13 SCALE 1" = 50' <small>1, 2, 11, 33, 21, 40, 41, 42, 43, 44, 45, 46, 47, 48, 49</small> F.B. 3012, 3048, 3016
---	---	------------------	------------------------	----------------------------	---

W. O. 5318-2

AS BUILT 5 OCT. 65

WS 70W/8



For Profiles, See Drawing No. 12

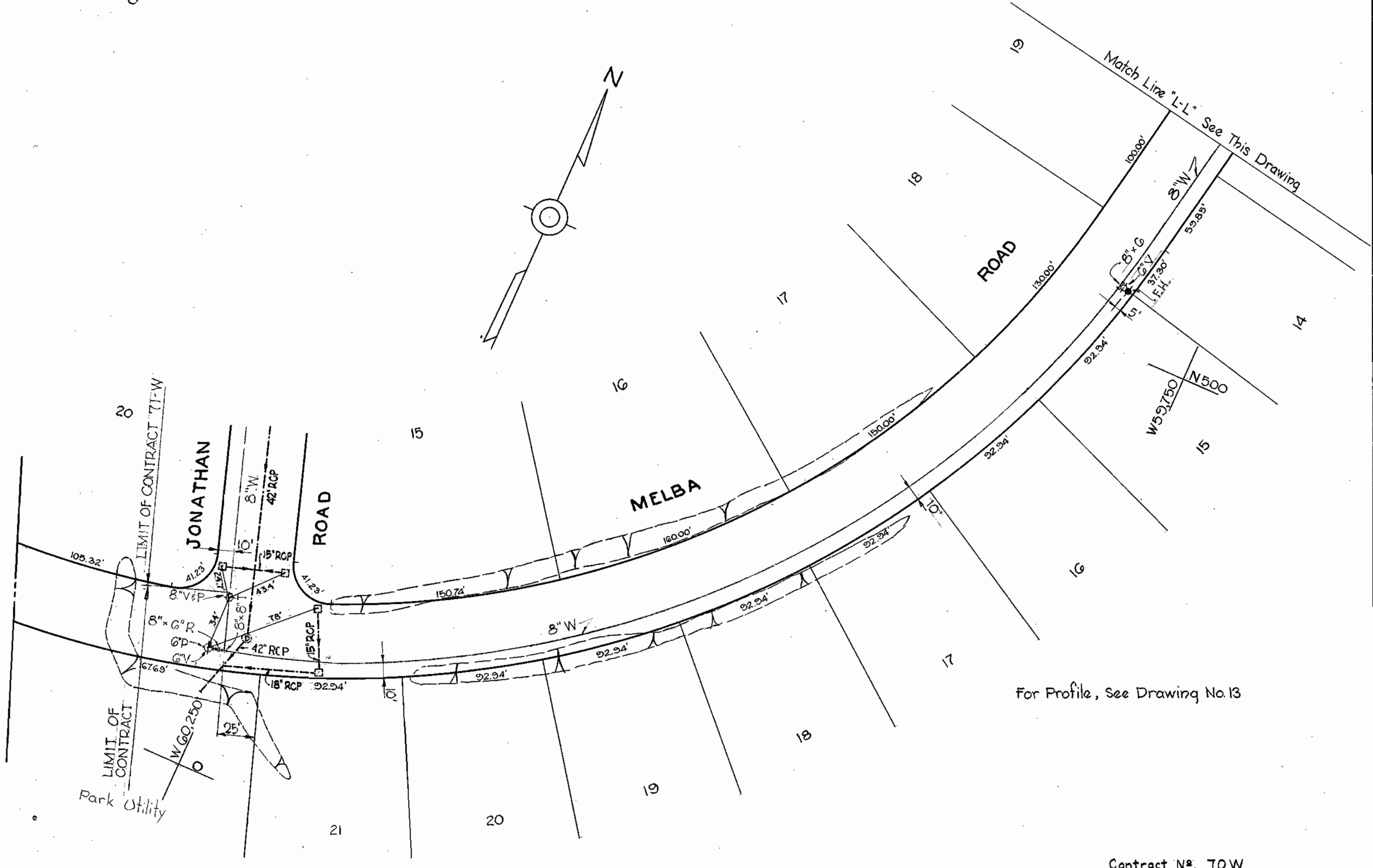
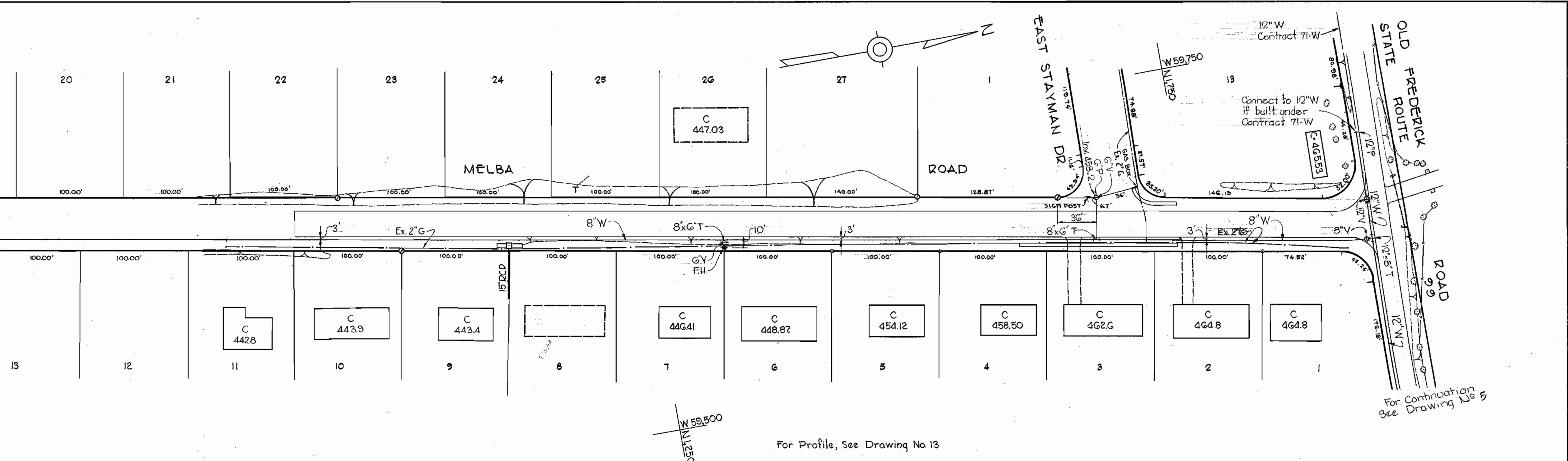
Contract No. 70W

WHITMAN, REQUARDT & ASSOCIATES ENGINEERS 1304 ST. PAUL ST. BALTIMORE, MARYLAND	HOWARD COUNTY METROPOLITAN COMMISSION Jan 3, 1964 <i>Carl W. Meyer</i> CHIEF ENGINEER	CONTRACT NO. 70W	PLAN OF WATER MAINS	ELLICOTT CITY SUB-DISTRICT	DRAWING NO. 8 OF 13	SCALE 1"=50' L. 2 NW 39 1/2 NW 40 F.B. 3048
---	--	------------------	------------------------	----------------------------	---------------------------	---

W. O. 5318-2

AS BUILT 5 OCT. 65

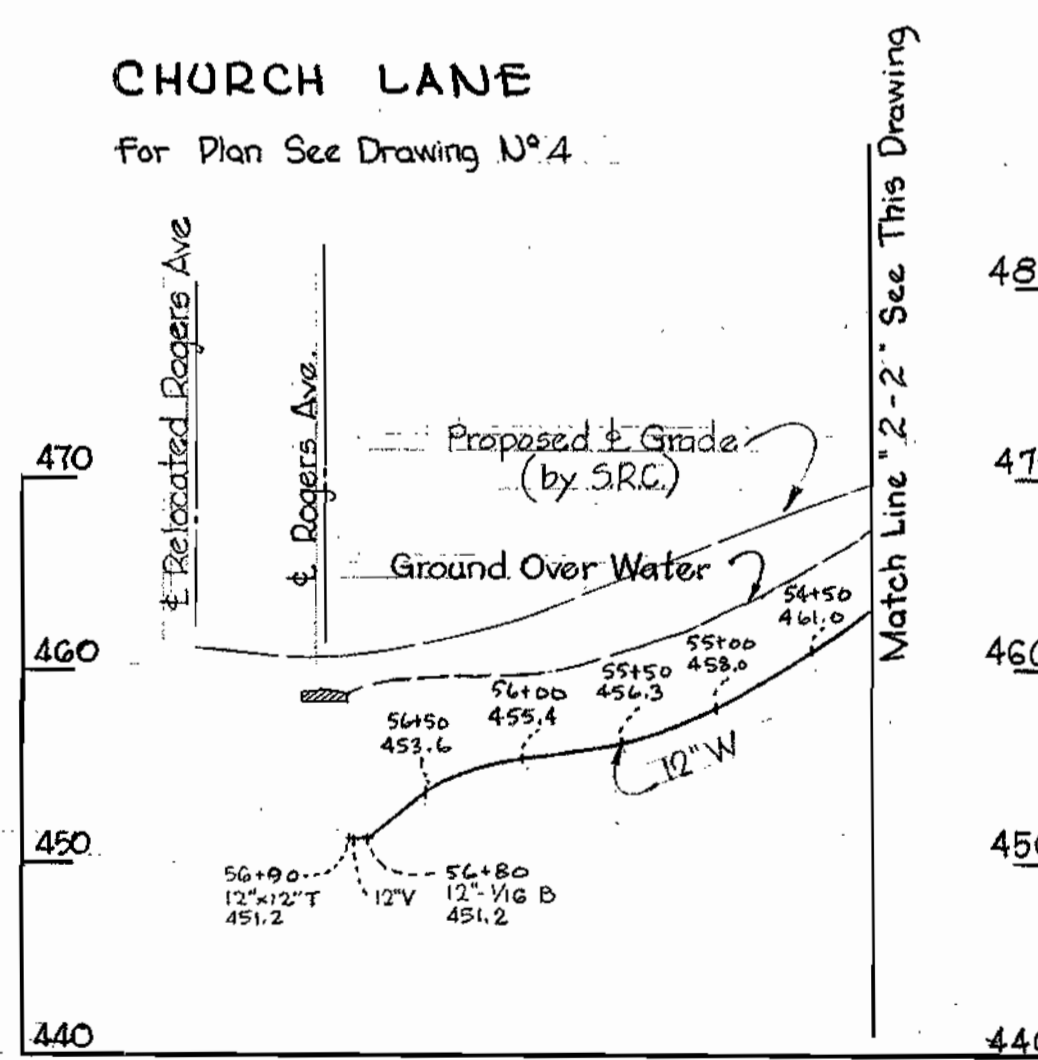
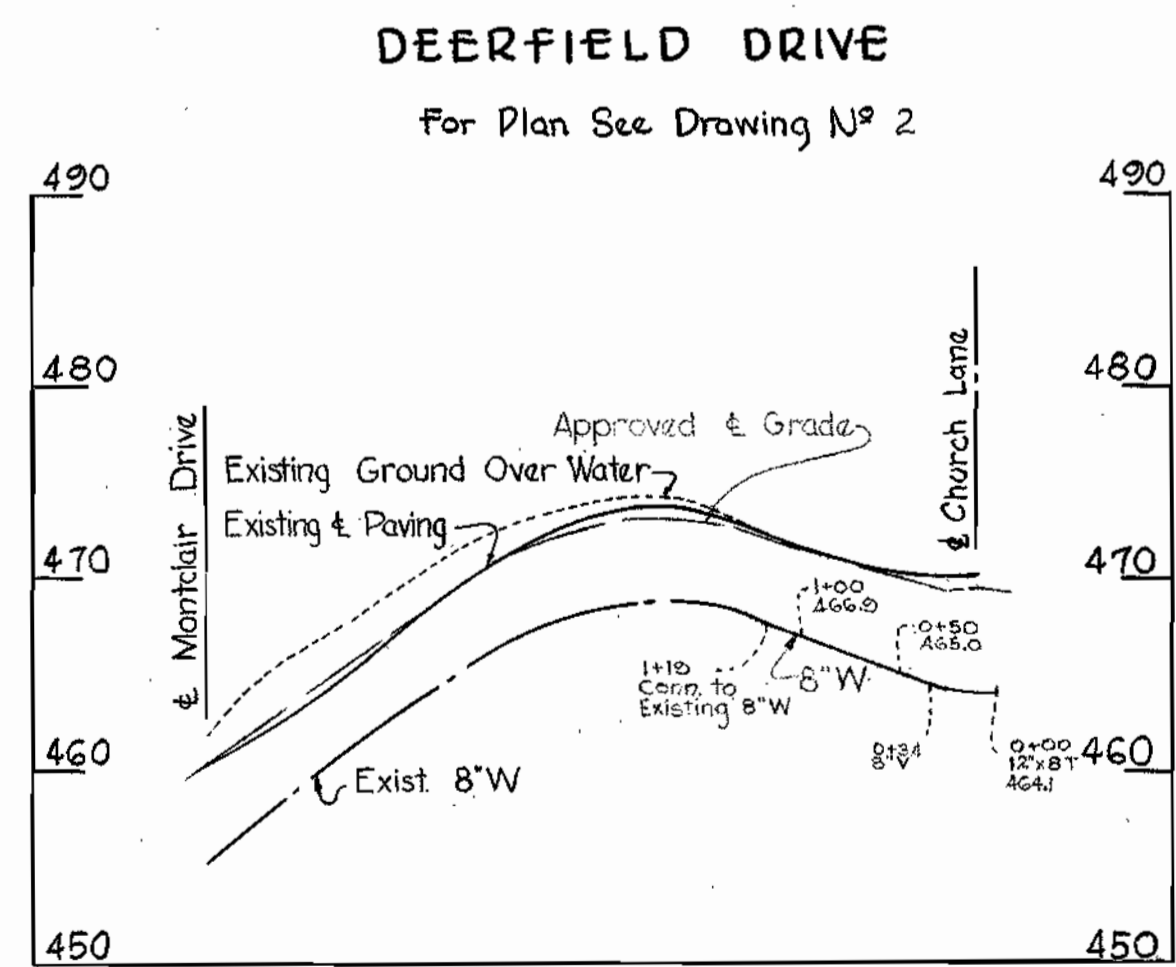
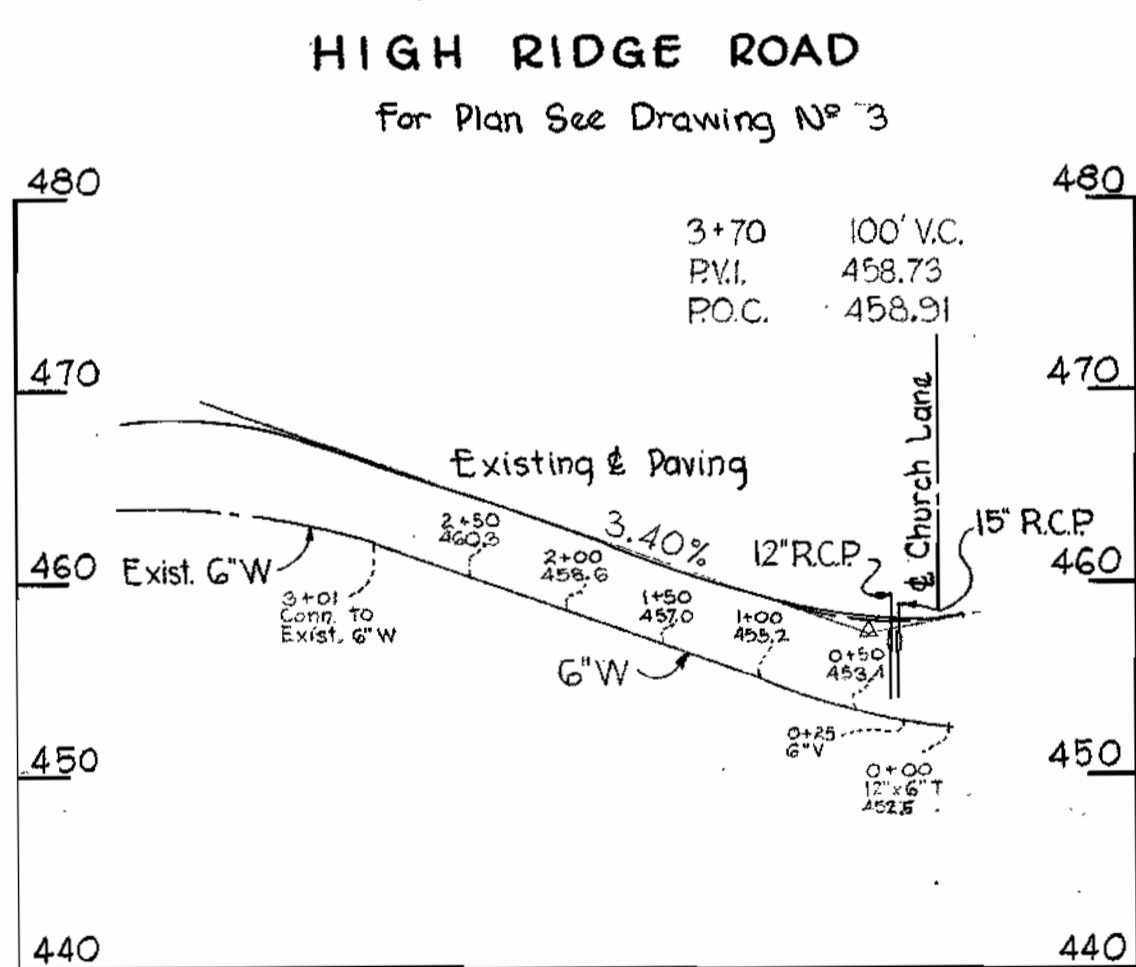
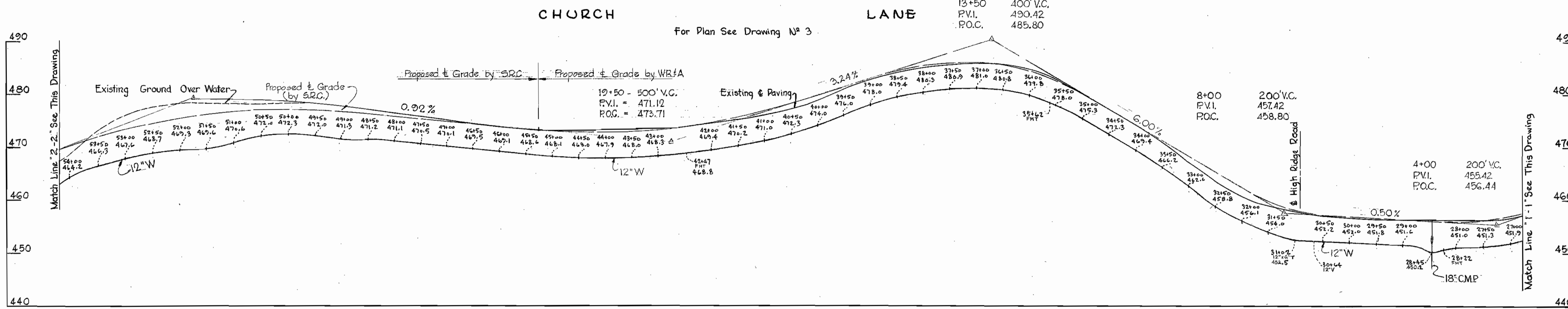
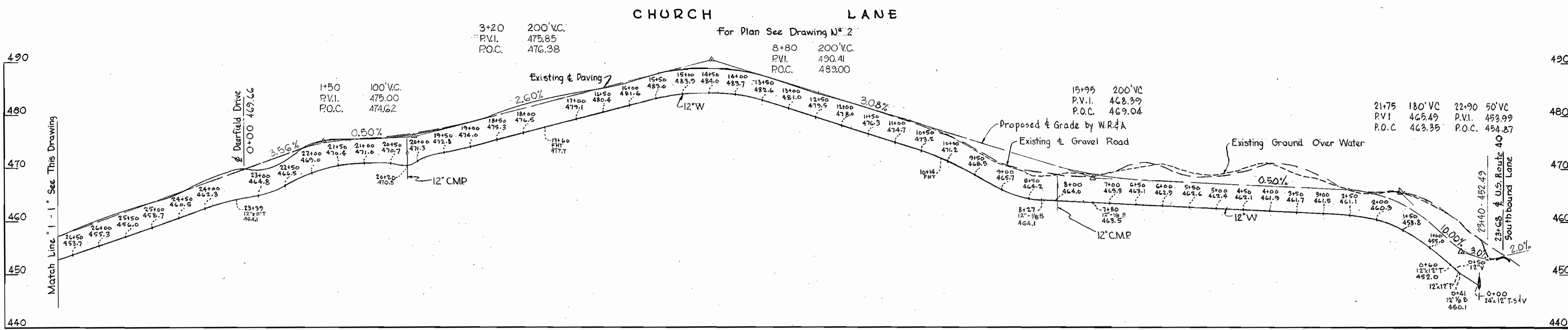
Match Line 'L-L' See This Drawing



WHITMAN, REQUARDT & ASSOCIATES ENGINEERS 1304 ST. PAUL ST. BALTIMORE, MARYLAND	HOWARD COUNTY METROPOLITAN COMMISSION Jan. 3, 1964 DATE <i>Carl W. Meyer</i> CHIEF ENGINEER	CONTRACT NO. 70W	PLAN OF WATER MAINS	ELLICOTT CITY SUB-DISTRICT	Contract No. 70W DRAWING NO. 9 OF 13 SCALE 1"=50' 1/2 NW 40 F.B. 3052
---	---	------------------	------------------------	----------------------------	---

W. O. 5318-2 AS BUILT 5 OCT. 65

WS 70W/9



WHITMAN, REQUARDT & ASSOCIATES
ENGINEERS
1304 ST. PAUL ST.
BALTIMORE, MARYLAND

HOWARD COUNTY METROPOLITAN COMMISSION
March 20, 1964
DATE

Carl W. Meyer
CHIEF ENGINEER

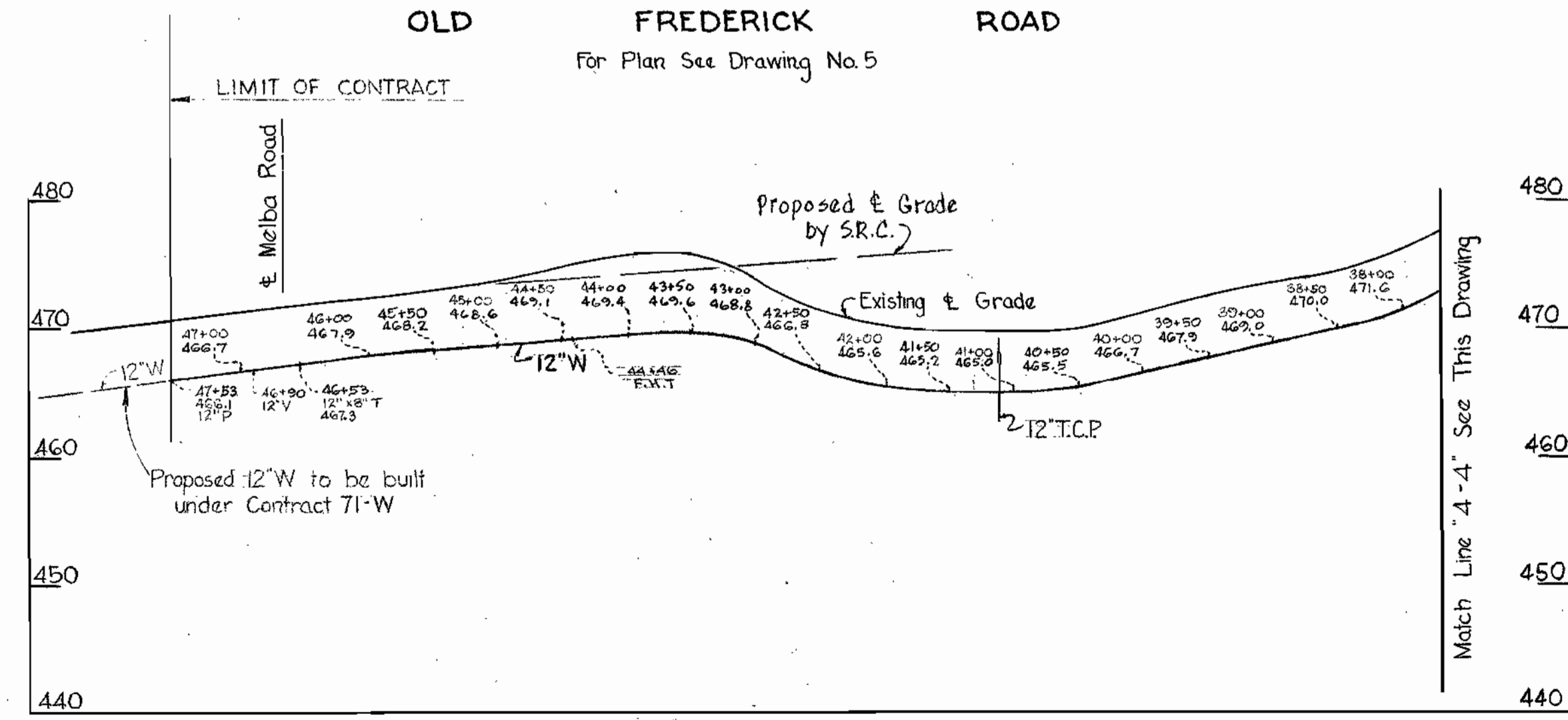
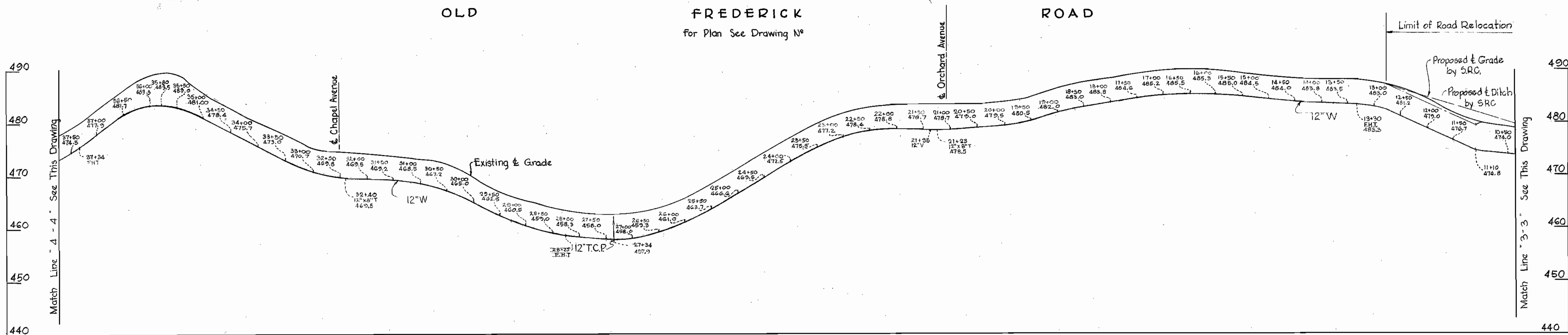
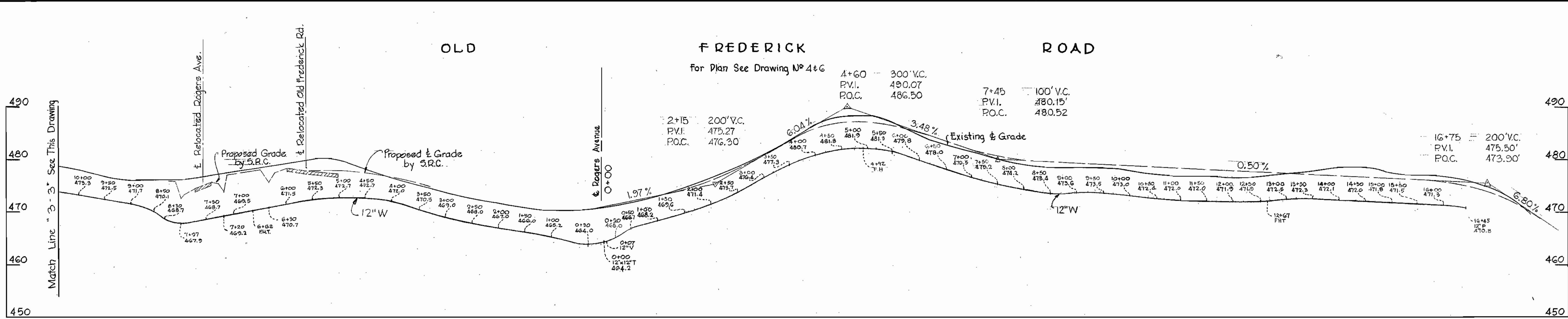
CONTRACT NO. 70-W

PROFILES OF
WATER MAINS

ELLICOTT CITY SUB-DISTRICT

Contract N^o 70W
DRAWING NO. 10 OF 13
SCALE H: 1"=100'
V: 1"=10'

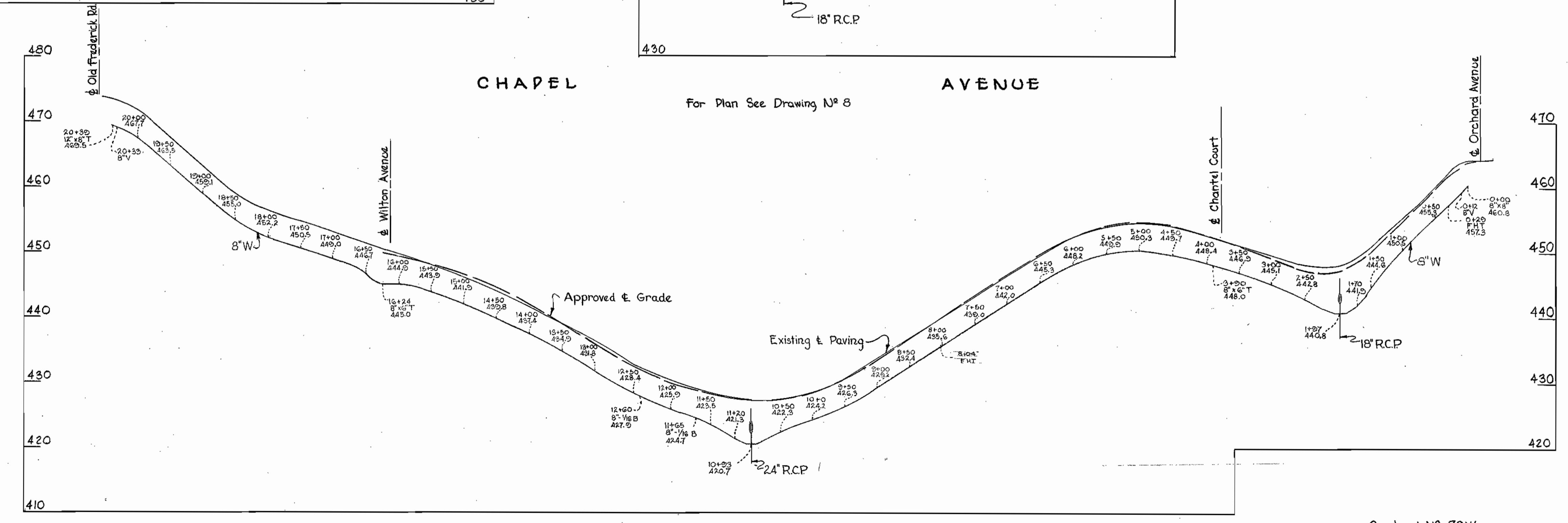
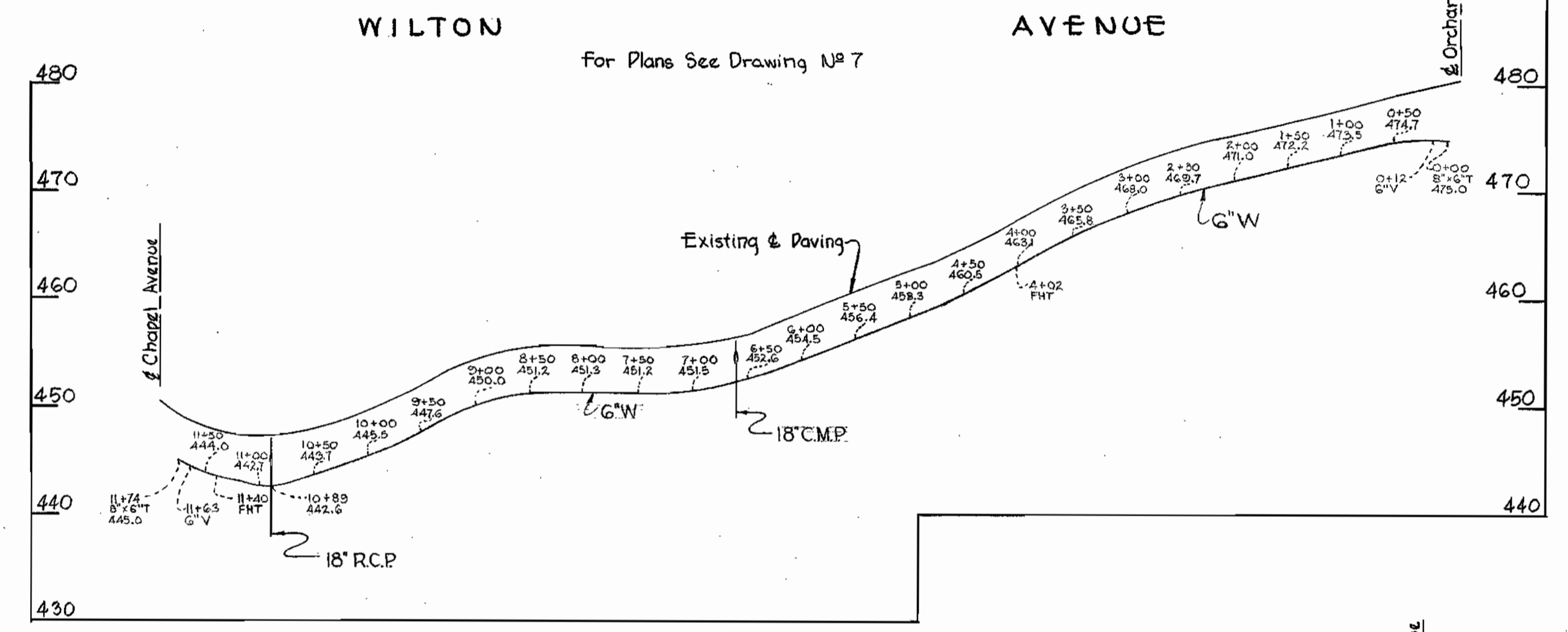
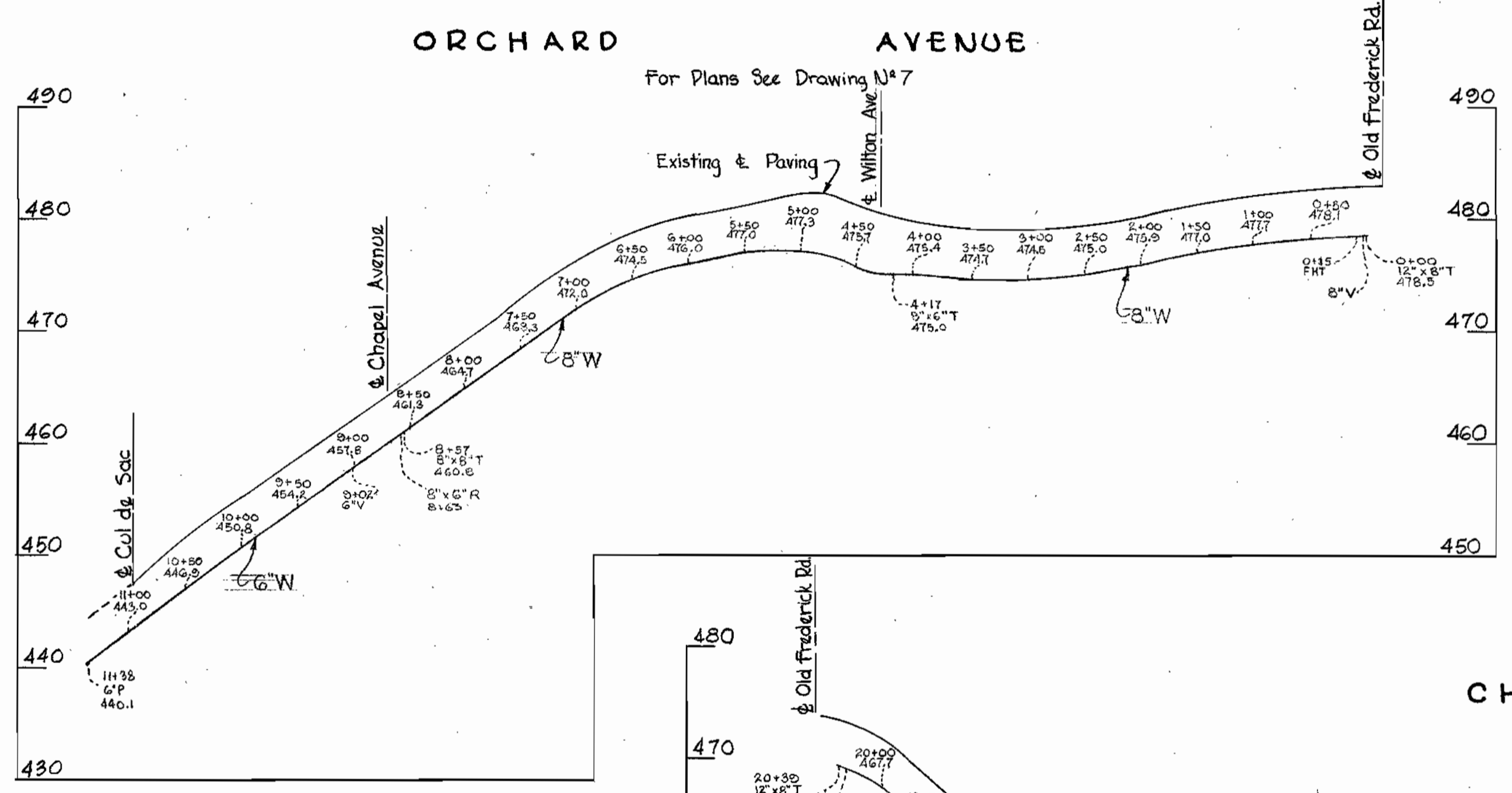
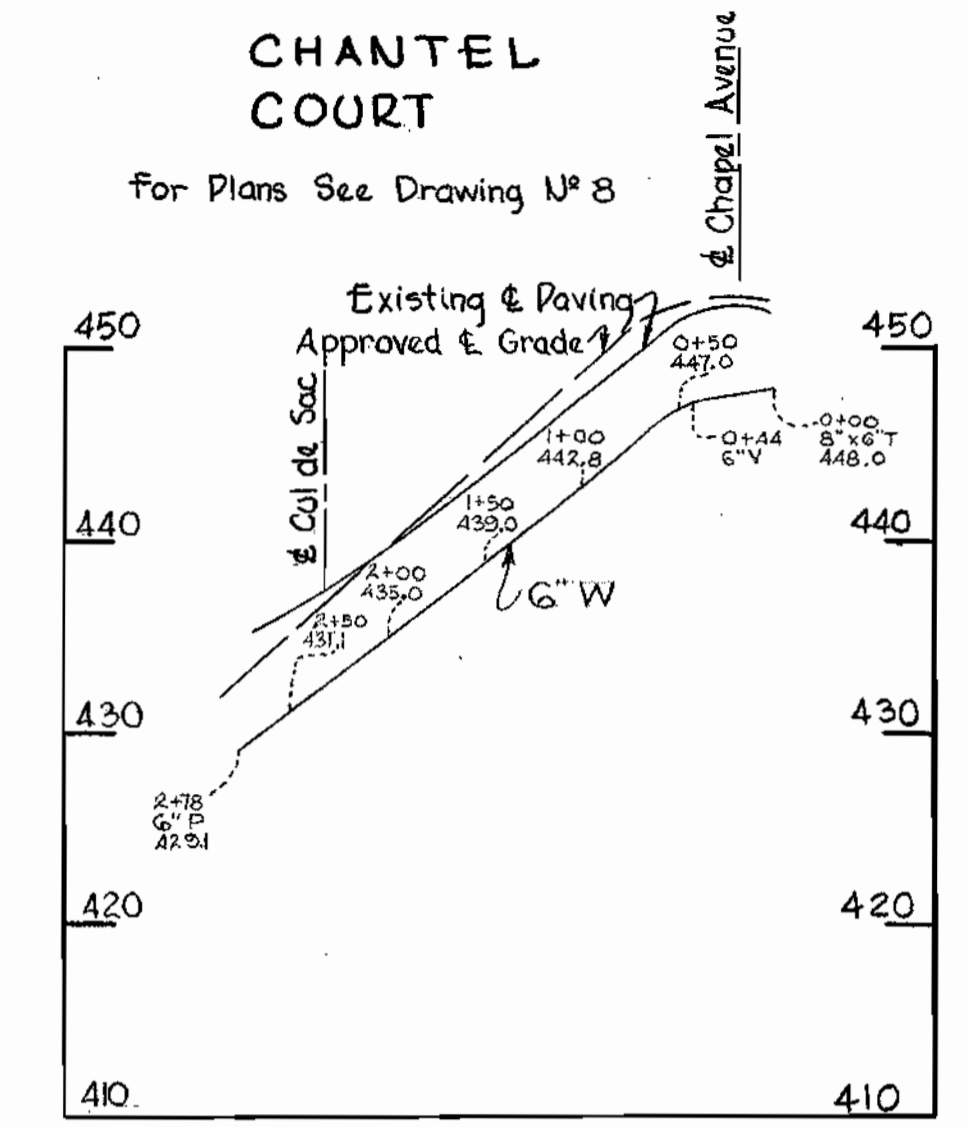
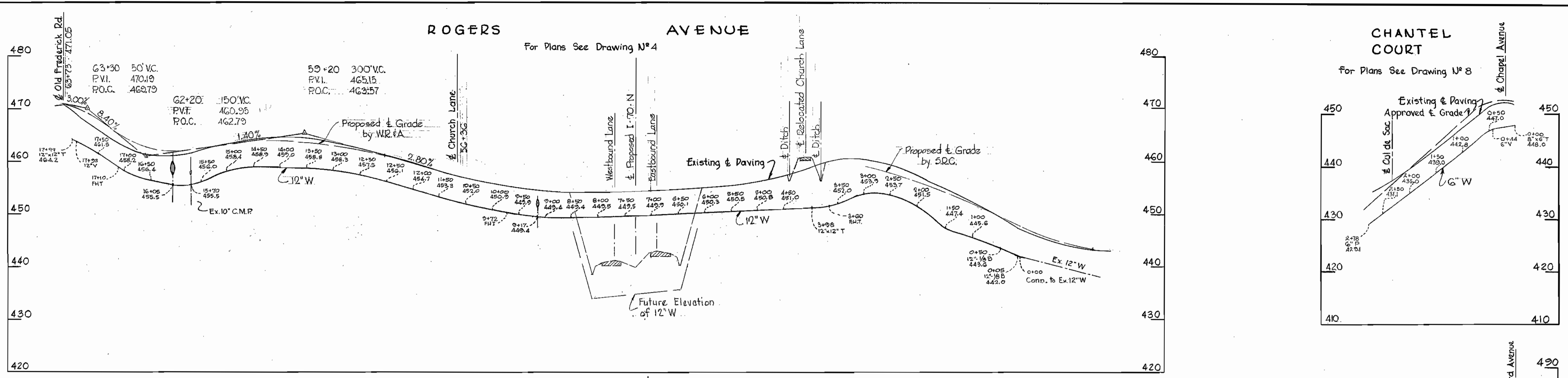
WS 70W/10



WHITMAN, REQUARDT & ASSOCIATES ENGINEERS 1304 ST. PAUL ST. BALTIMORE, MARYLAND	HOWARD COUNTY METROPOLITAN COMMISSION DATE: March 20, 1964 <i>Carl W. Meyer</i> CHIEF ENGINEER	CONTRACT NO. 70W	PROFILES OF WATER MAINS	ELLICOTT CITY SUB-DISTRICT	Contract No 70W	
					DRAWING NO. 11 OF 13	SCALE H:1"=100' V:1"=10'

AS BUILT 5 OCT. 65

11 MW/11

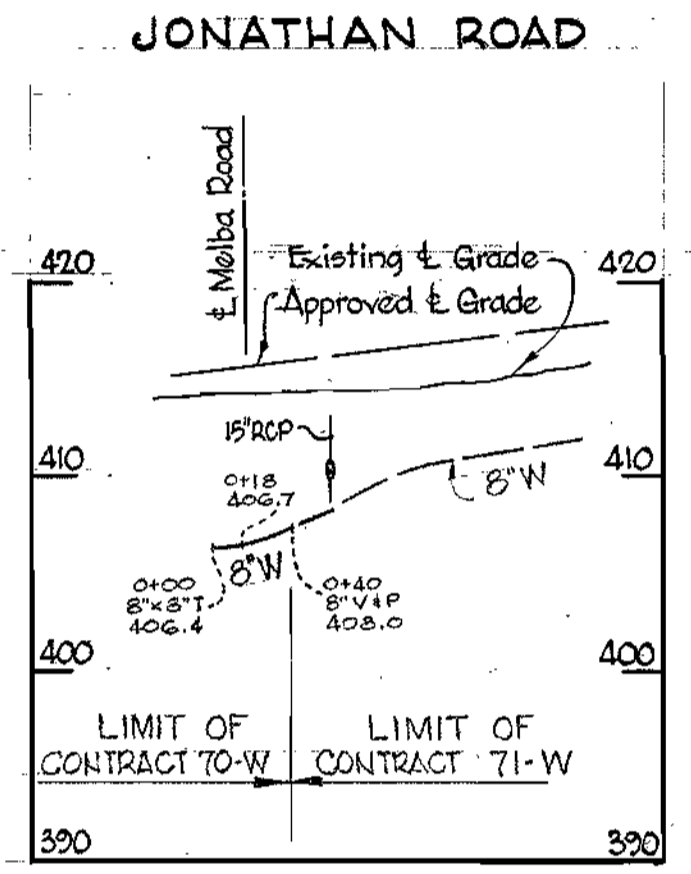
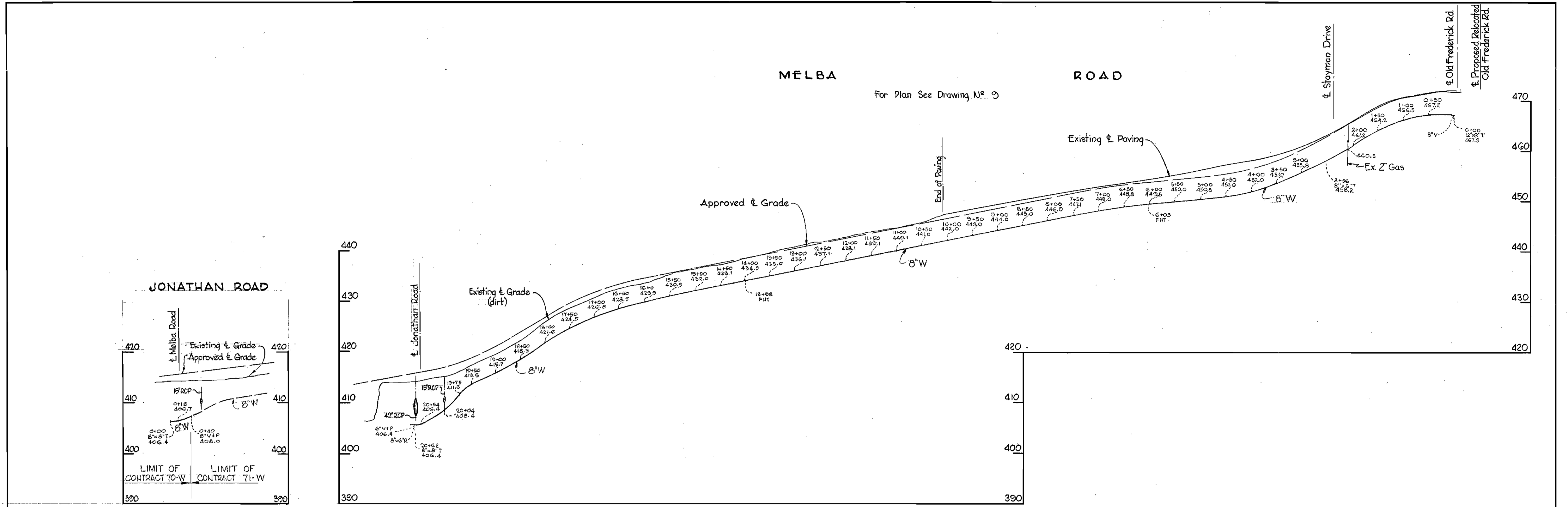


WHITMAN, REQUARDT & ASSOCIATES ENGINEERS 1304 ST. PAUL ST. BALTIMORE, MARYLAND	HOWARD COUNTY METROPOLITAN COMMISSION March 20, 1964 DATE	CONTRACT NO. 70W	PROFILES OF WATER MAINS	ELLICOTT CITY SUB-DISTRICT	Contract No 70W
					DRAWING NO. 12 OF 13

W. O. 5318-2 AS BUILT 5 OCT. 65

WS 70W/12

WS 70W/13



WHITMAN, REQUARDT & ASSOCIATES ENGINEERS 1304 ST. PAUL ST. BALTIMORE, MARYLAND	HOWARD COUNTY METROPOLITAN COMMISSION March 20, 1964 <small>DATE</small>	CONTRACT NO. 70W	PROFILES OF WATER MAINS	ELLICOTT CITY SUB-DISTRICT	Contract N° 70W	
					DRAWING NO. 13 OF 13	SCALE H: 1"=100' V: 1"=10'

W. O. 5318-2

AS BUILT 5 OCT. 65