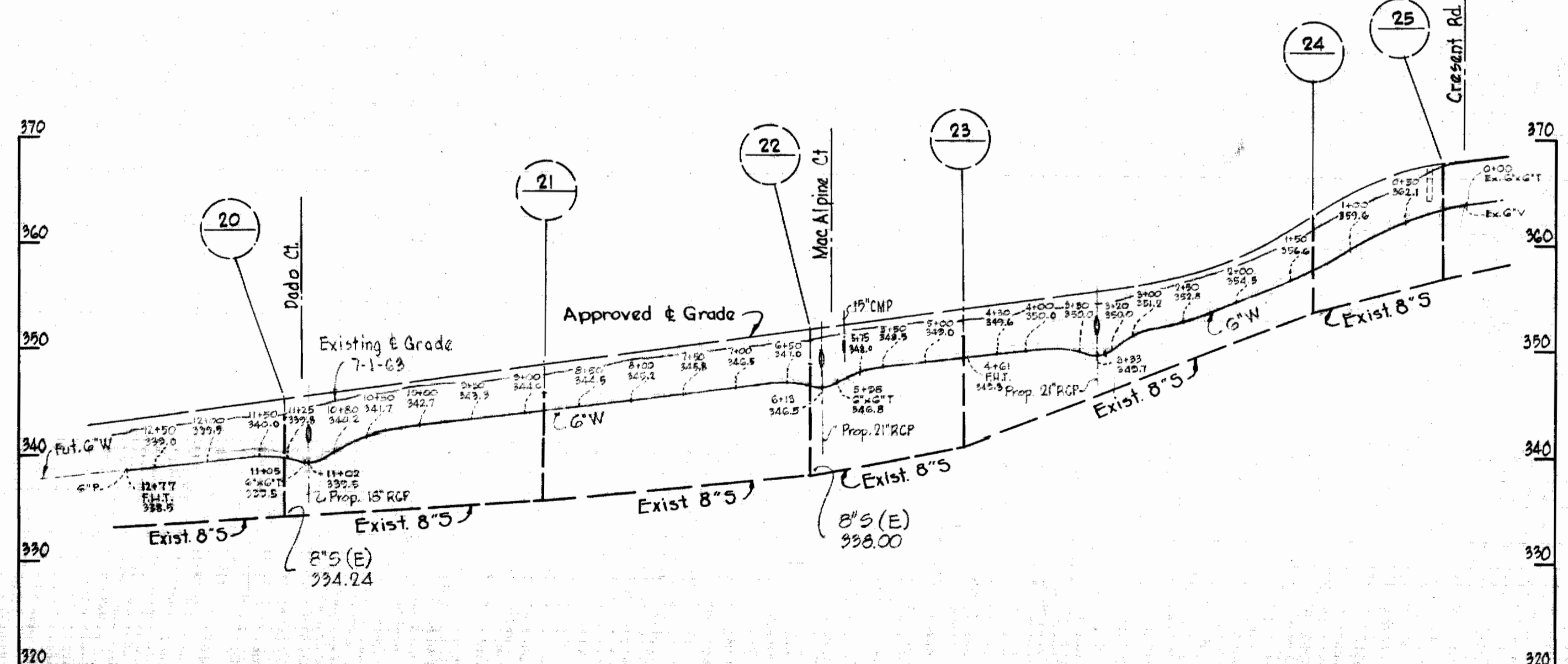
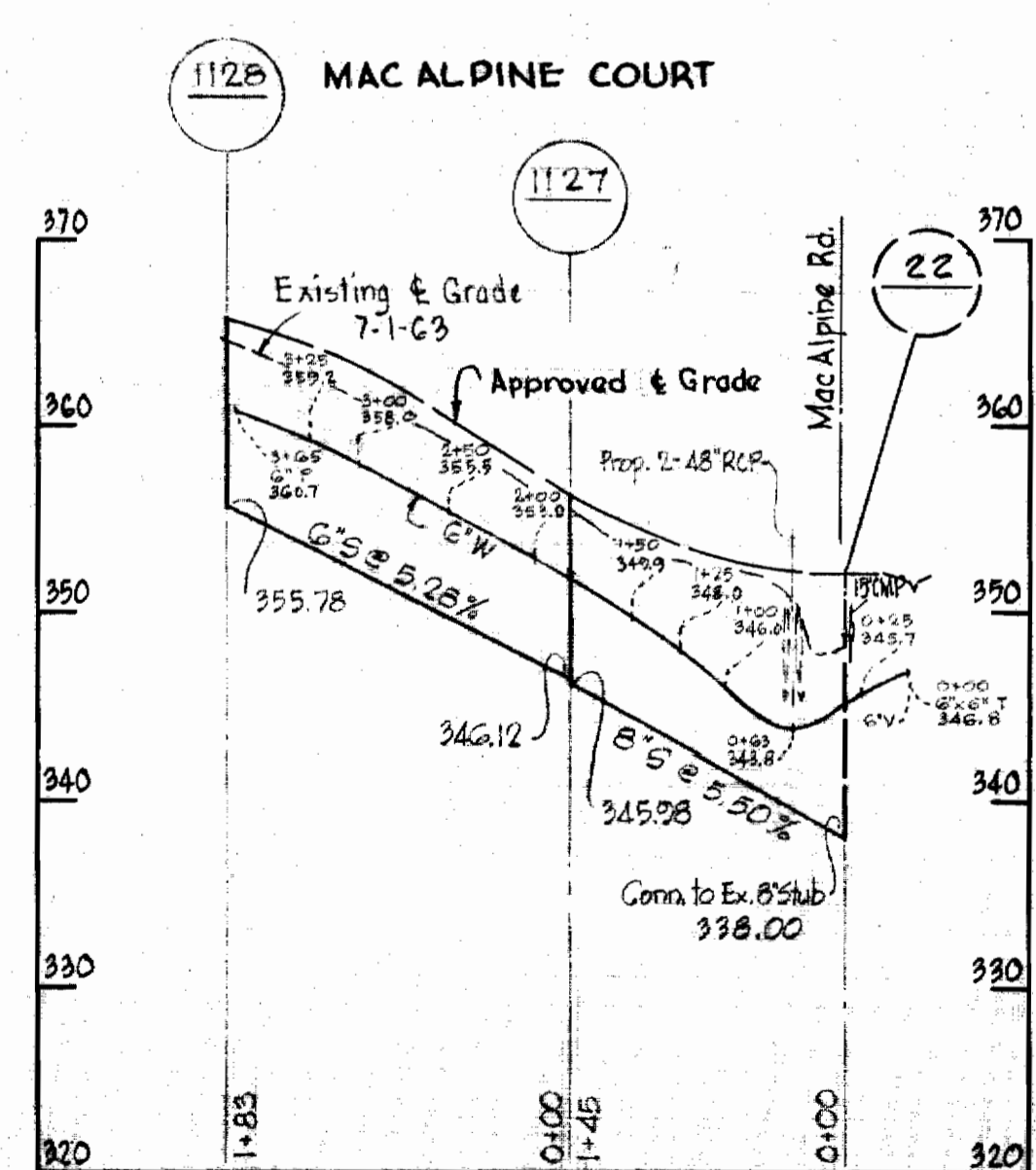
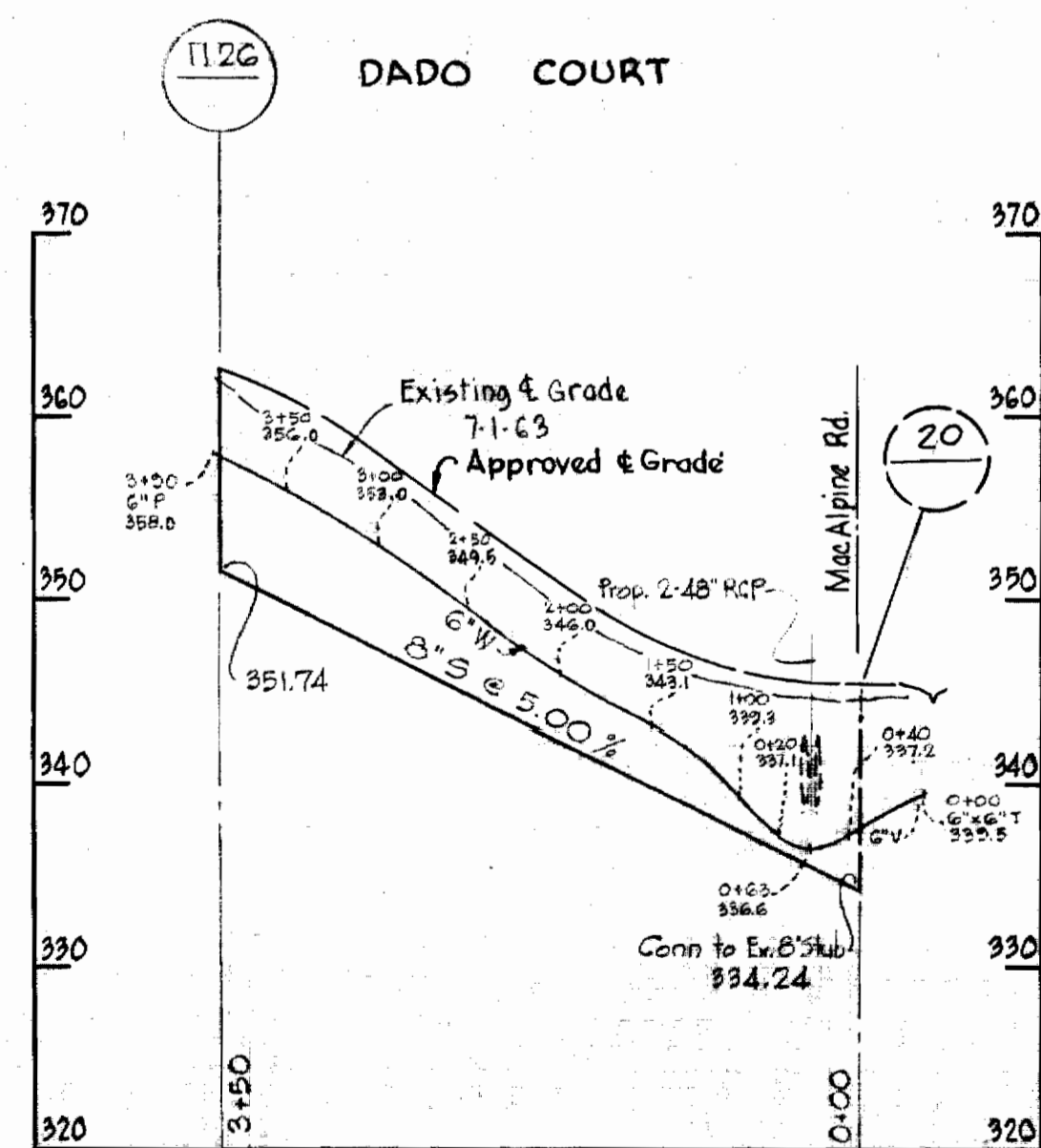


GENERAL NOTES

1. Approximate location of existing mains are shown. The Contractor shall take all necessary precautions to protect the existing mains and services and maintain uninterrupted supply. Any damage incurred shall be repaired immediately.
2. All pipe elevations shown are invert elevations.
3. The Contractor shall locate existing utilities a minimum of two weeks in advance of construction operations in vicinity of utilities.
4. The location of all valves, fittings etc. have been located in plan and dimensions shall be strictly adhered to unless otherwise directed by the engineer in writing.
5. For all standard details see Standards bound in the specifications.
6. Block all fittings with concrete, see Standard Details.
7. All G.W. to be Class 22 C.I.P. water mains shall have a minimum of 3 1/2' cover unless otherwise noted.
8. Bury line elevation on fire hydrants shall be set the same as edge of paving or as directed by the Engineer in the field.
9. Build all manholes to existing ground or paving unless otherwise shown or directed by the Engineer.

PLAN
Scale: 1" = 50'



PROFILES
H: 1" = 100'
V: 1" = 10'

Dunloggin - Section 8
Contract 58W49

WHITMAN, REQUARDT & ASSOCIATES
ENGINEERS
1304 ST. PAUL ST.
BALTIMORE, MARYLAND

HOWARD COUNTY METROPOLITAN COMMISSION
JULY 3, 1963
DATE
Carl W. Meyer
CHIEF ENGINEER

CONTRACT NO. 58-W49

PLAN AND PROFILE OF
WATER AND SEWER MAINS

ELLCOTT CITY SUB-DISTRICT

DRAWING NO. 1 OF 1
SCALE AS SHOWN

13 SW 41
14 SW 41
15 SW 41

WS 58 W49/1