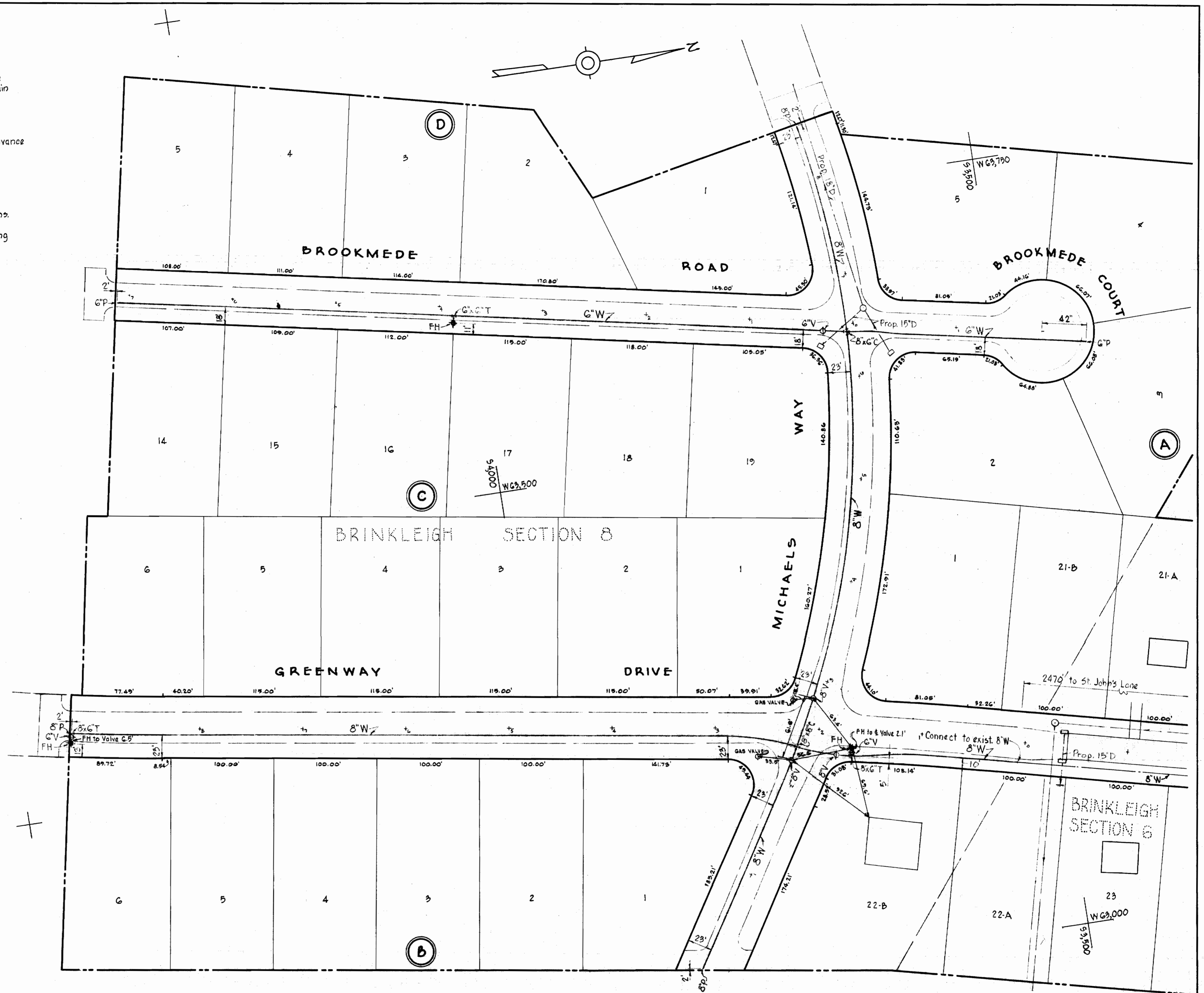


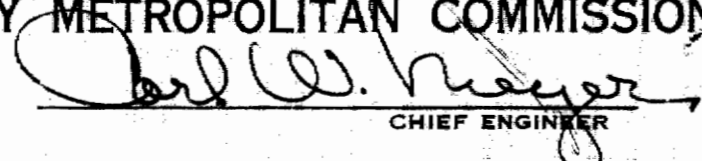
GENERAL NOTES

1. Approximate location of existing mains are shown. The Contractor shall take all necessary precautions to protect the existing mains and services and maintain uninterrupted supply. Any damage incurred shall be repaired immediately.
2. All pipe elevations shown are invert elevations.
3. The Contractor shall locate existing utilities a minimum of two weeks in advance of construction operations in vicinity of utilities.
4. For all standard details see Standards bound in Specifications.
5. All water mains to be C.I.P. Class 22 and have a minimum of 36" cover.
6. Block all fittings with concrete, see standard details bound in specifications.
7. Bury line elevation on fire hydrants shall be set the same as edge of paving or as directed by the Engineer in the field.



W&A. BM #41-B Elev. 433.48
 x-cut roadside flange bolt fire hydrant
 E. side Greenway Drive 1800± S. of
 St. John's Lane.

Brinkleigh - Section 8
 Contract 57-W

| | | | | | | |
|---|---|-------------------|------------------------|----------------------------|--------------------------|---------------------------------------|
| WHITMAN, REQUARDT & ASSOCIATES ENGINEERS 1304 ST. PAUL ST. BALTIMORE, MARYLAND | HOWARD COUNTY METROPOLITAN COMMISSION May 16, 1963 DATE  CHIEF ENGINEER | CONTRACT NO. 57-W | PLAN OF WATER MAINS | ELLICOTT CITY SUB-DISTRICT | DRAWING NO. 1 OF 2 | SCALE 1" = 50' 43W 48 53W 45 |
|---|---|-------------------|------------------------|----------------------------|--------------------------|---------------------------------------|

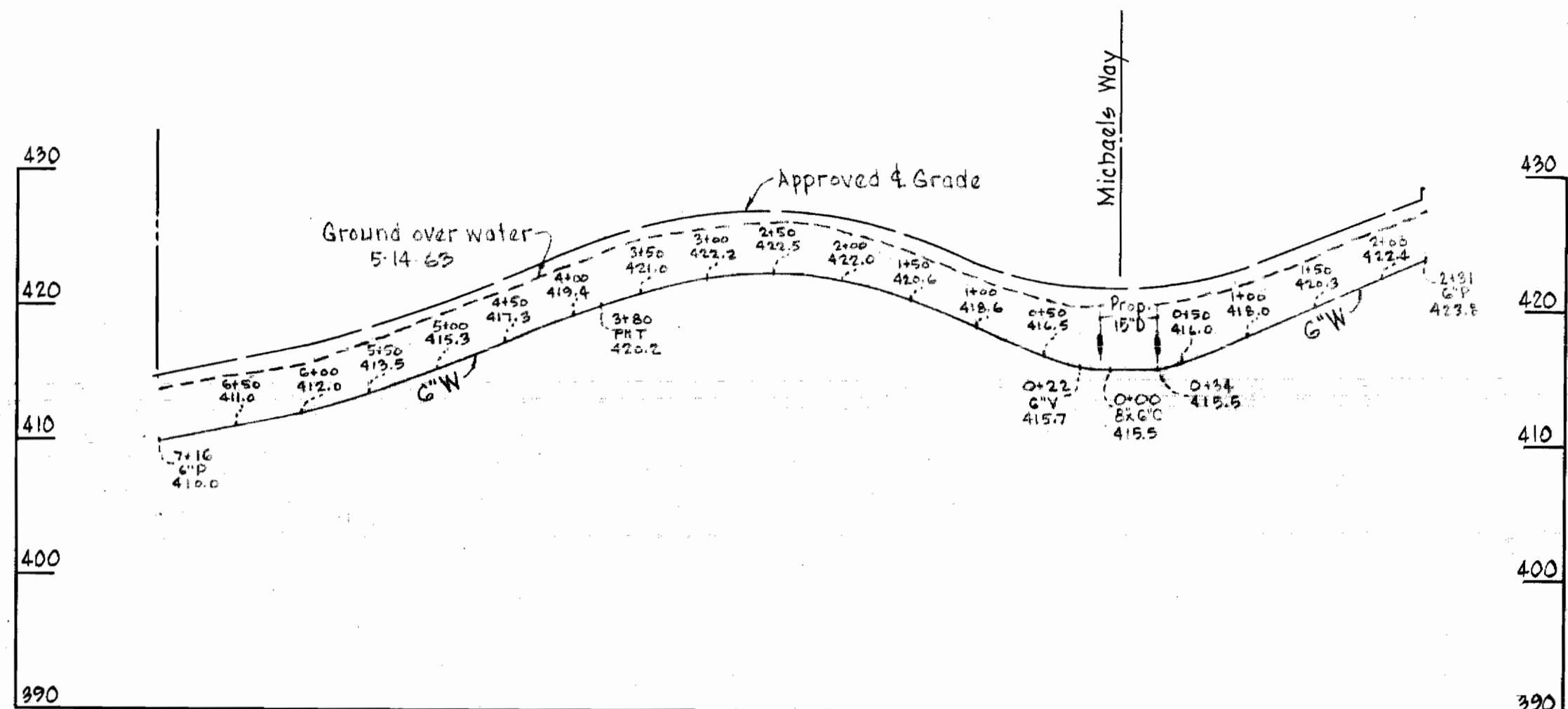
W. O. 5129-2
 - 6023-2 -

AS BUILT 29 OCT. 63

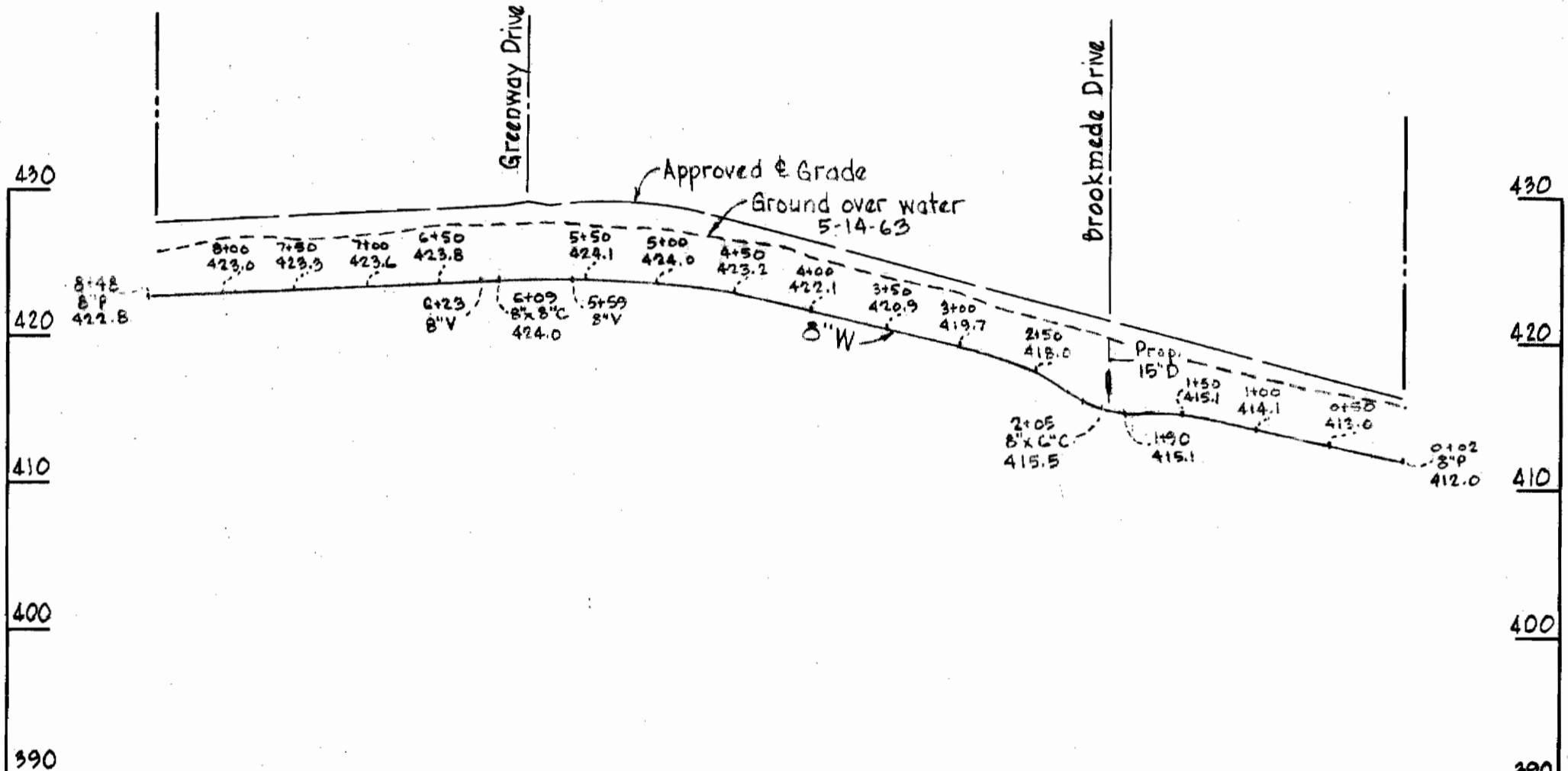
WS 57W/1

BROOKMEDE DRIVE

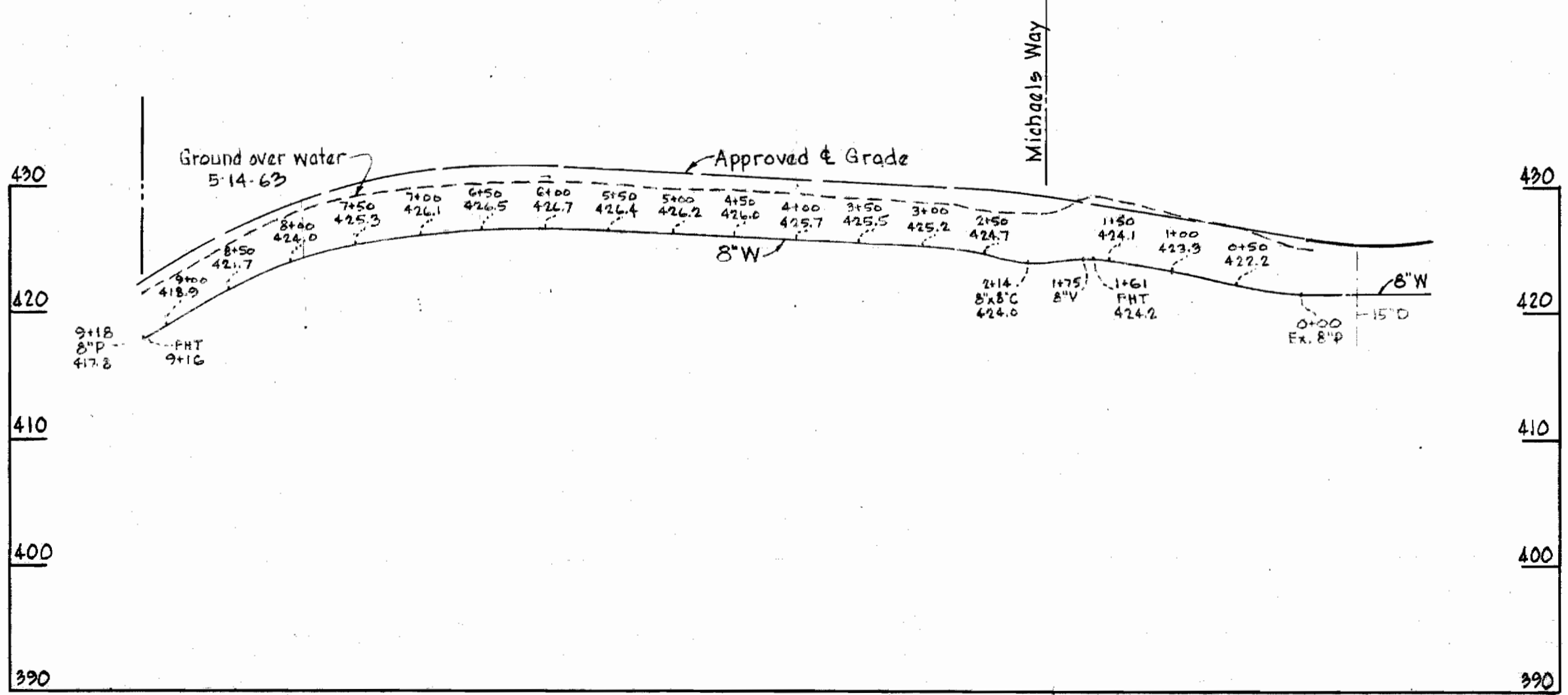
BROOKMEDE CT.



MICHAELS WAY



GREENWAY DRIVE



Brinkleigh-Section 8
Contract 57-W

| | | | | | |
|---|---|--------------------------|----------------------------|----------------------------|---|
| WHITMAN, REQUARDT & ASSOCIATES ENGINEERS 1304 ST. PAUL ST. BALTIMORE, MARYLAND | HOWARD COUNTY METROPOLITAN COMMISSION May 16, 1963 DATE <i>Carl W. Meyer</i> CHIEF ENGINEER | CONTRACT NO. <u>57-W</u> | PROFILES OF WATER MAINS | ELLICOTT CITY SUB-DISTRICT | DRAWING NO. <u>2</u> OF <u>2</u> SCALE H-1"=100' V-1"=10' |
|---|---|--------------------------|----------------------------|----------------------------|---|

W. O. 5129-2
6023-2

MAIL 29 OCT. 63

WS 57W/2