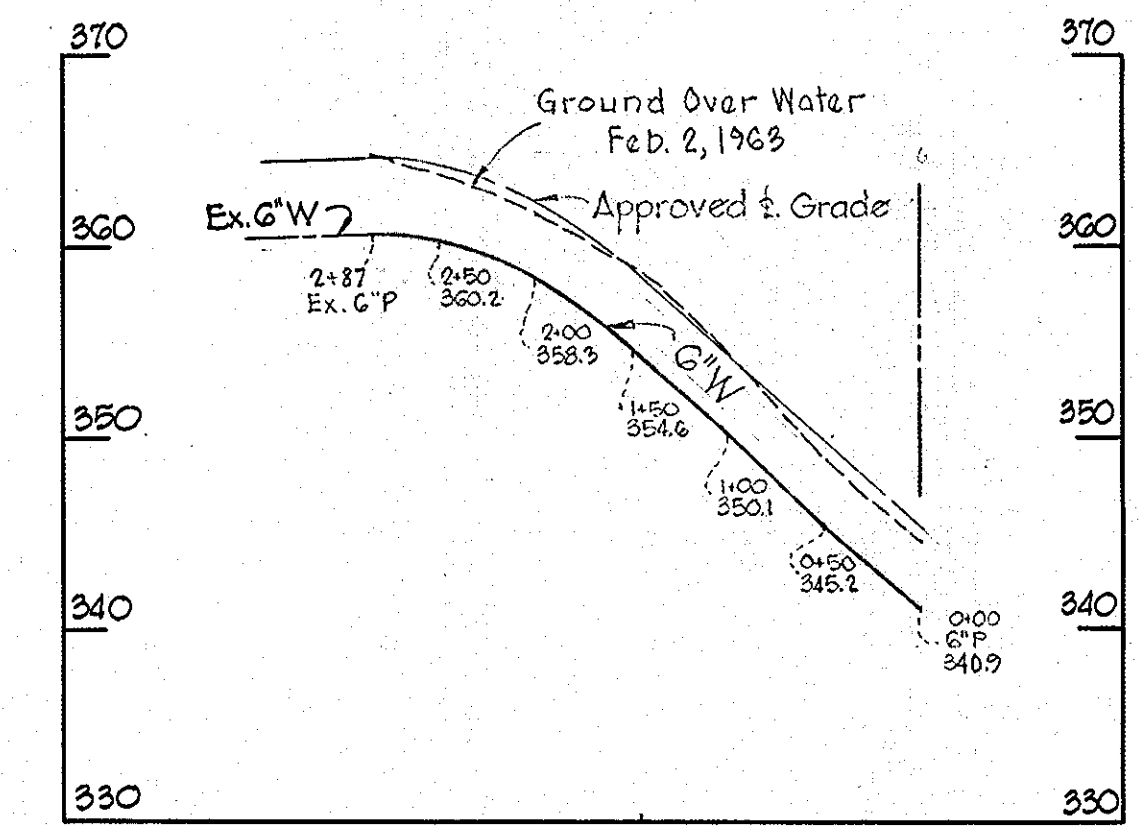


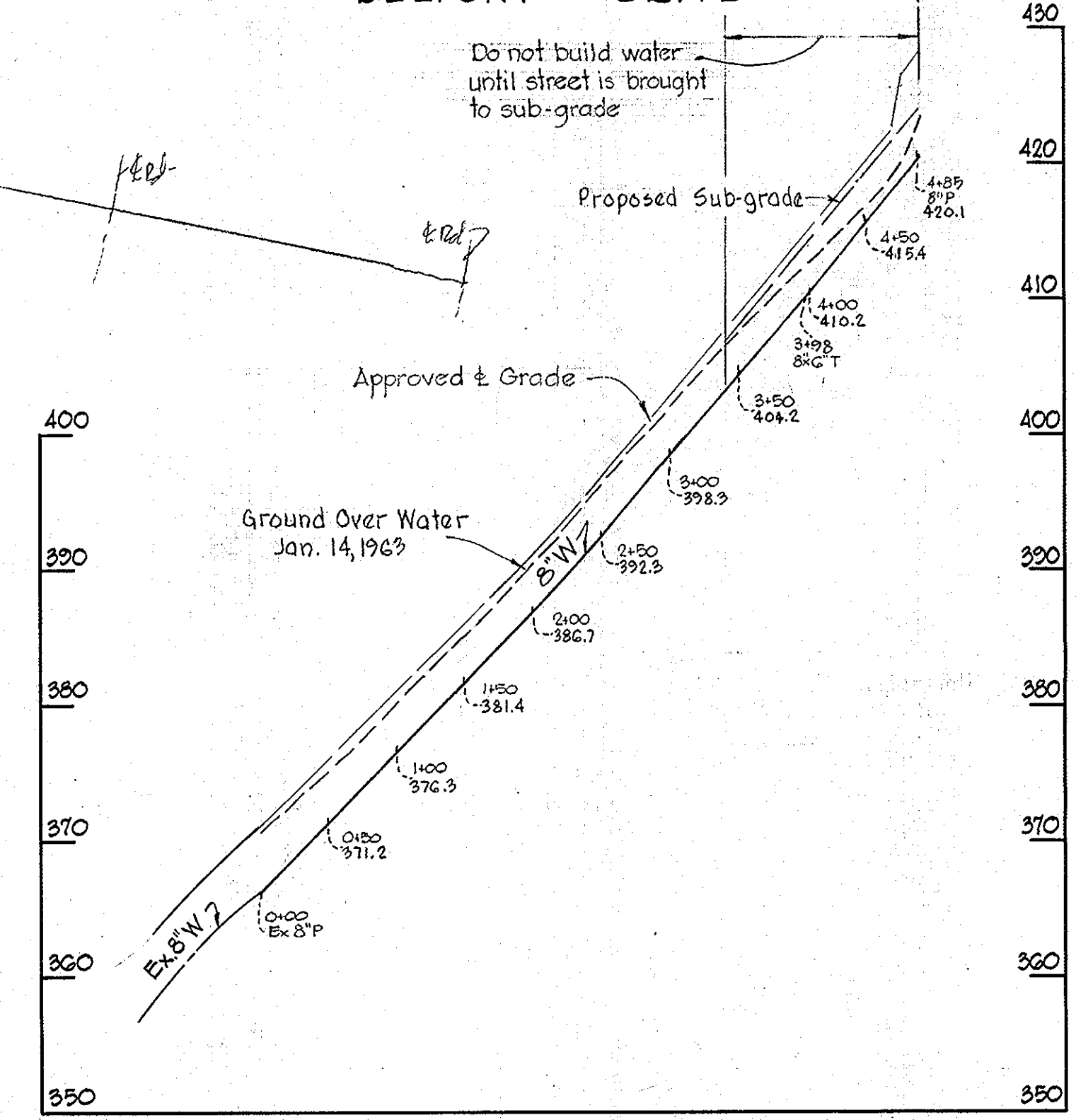
GENERAL NOTES

1. Approximate location of existing mains are shown. The Contractor shall take all precautions to protect the existing mains and services and maintain uninterrupted supply. Any damage incurred shall be repaired immediately.
2. All pipe elevations shown are invert elevations.
3. For all standard details see Standards bound in Specifications.
4. All water mains to be C.I.P. Class 22 and have a minimum cover of 3 1/2'.
5. Back all fittings with concrete, see standard details bound in Specifications.
6. Bury line elevation of fire hydrant shall be set the same as edge of paving or as directed by the Engineer in the field.

CHAPEL VIEW ROAD

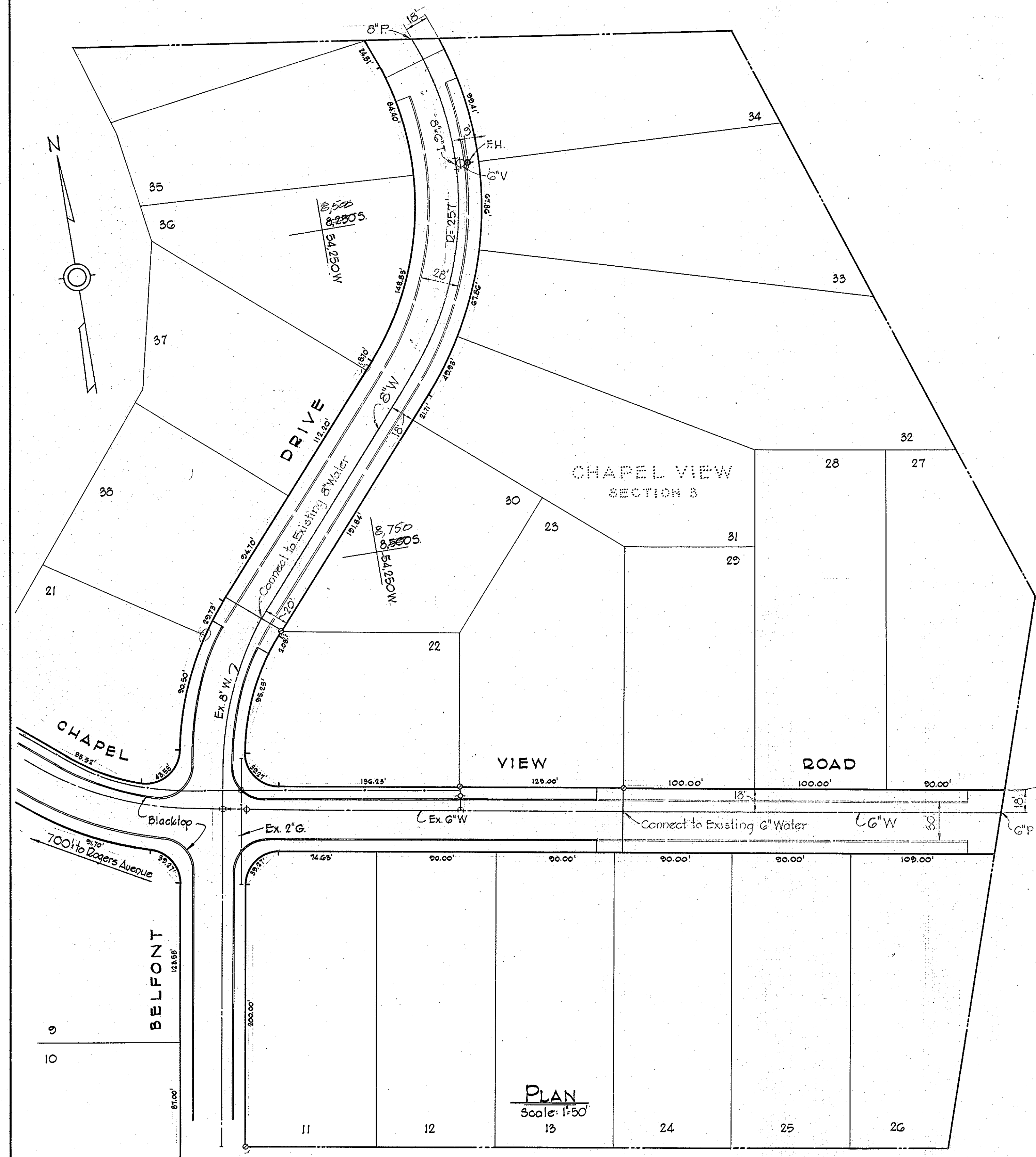


BELFONT DRIVE



PROFILES

Scale: Hor. 1"=100' Vert. 1"=10' Contract No. 54-W



W.D. & A. B.M. #24 Elev. 297.41
 22 spike in base of G4 E pole #203390 E.
 side of Rogers Ave., .02 mile N. of Frederick Rd.

W.D. & A. B.M. #23 Elev. 328.18
 22 spike in roof of 24' beech, E. side of
 Rogers Ave., .04 mile N. of Frederick Rd. in
 front of white single house.

WHITMAN, REQUARDT & ASSOCIATES ENGINEERS 1304 ST. PAUL ST. BALTIMORE, MARYLAND	HOWARD COUNTY METROPOLITAN COMMISSION Feb. 7, 1963 DATE	CONTRACT NO. 54-W	PLAN AND PROFILES OF WATER MAINS	ELLICOTT CITY SUB-DISTRICT	DRAWING NO. 1 OF 1	SCALE AS SHOWN
-----------------------------------------------------------------------------------------	---------------------------------------------------------------	-------------------	-------------------------------------	----------------------------	--------------------	----------------

W. O. 5125-2

AS BUILT 19 APR. 63

WS 54W/1