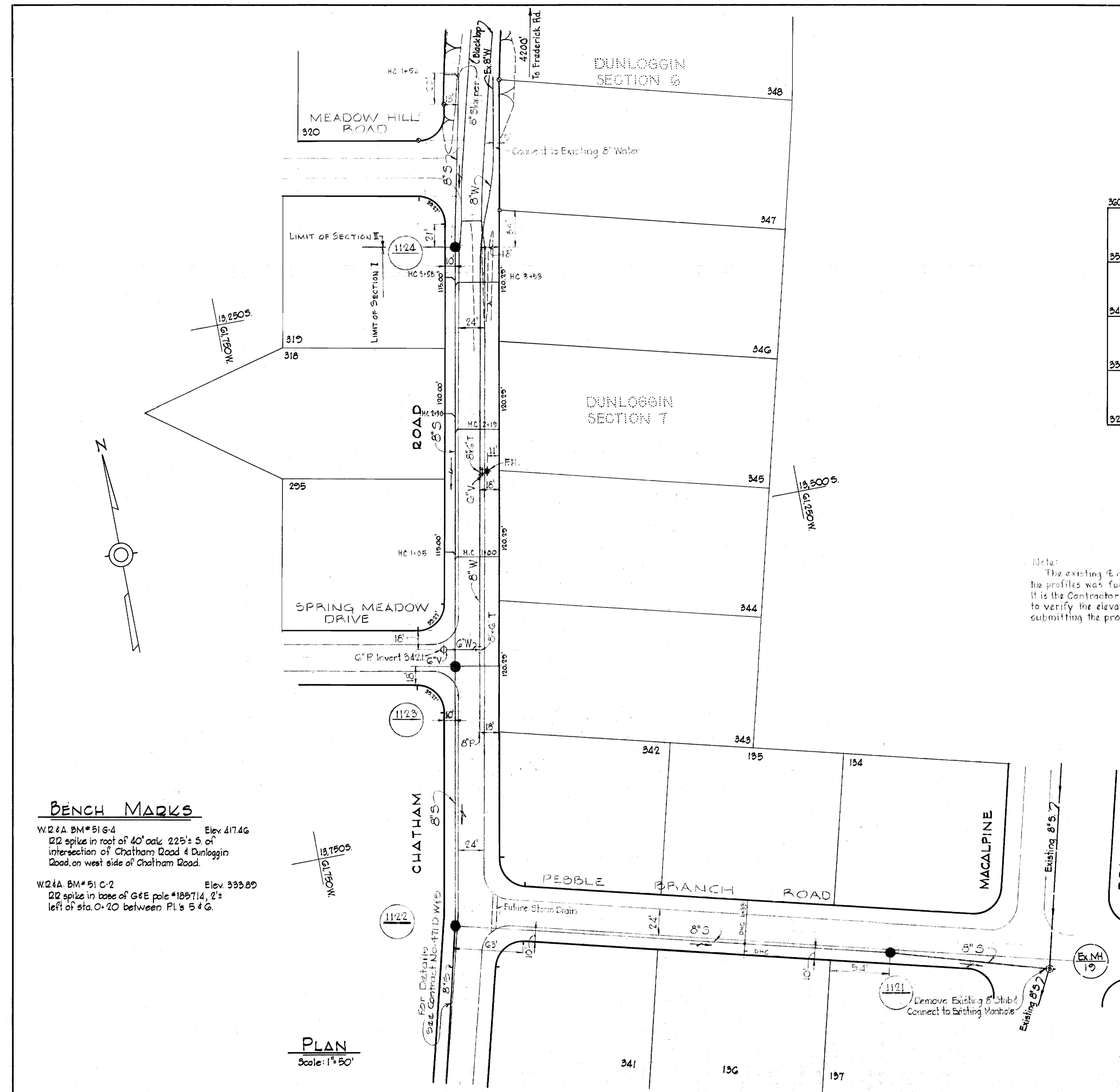


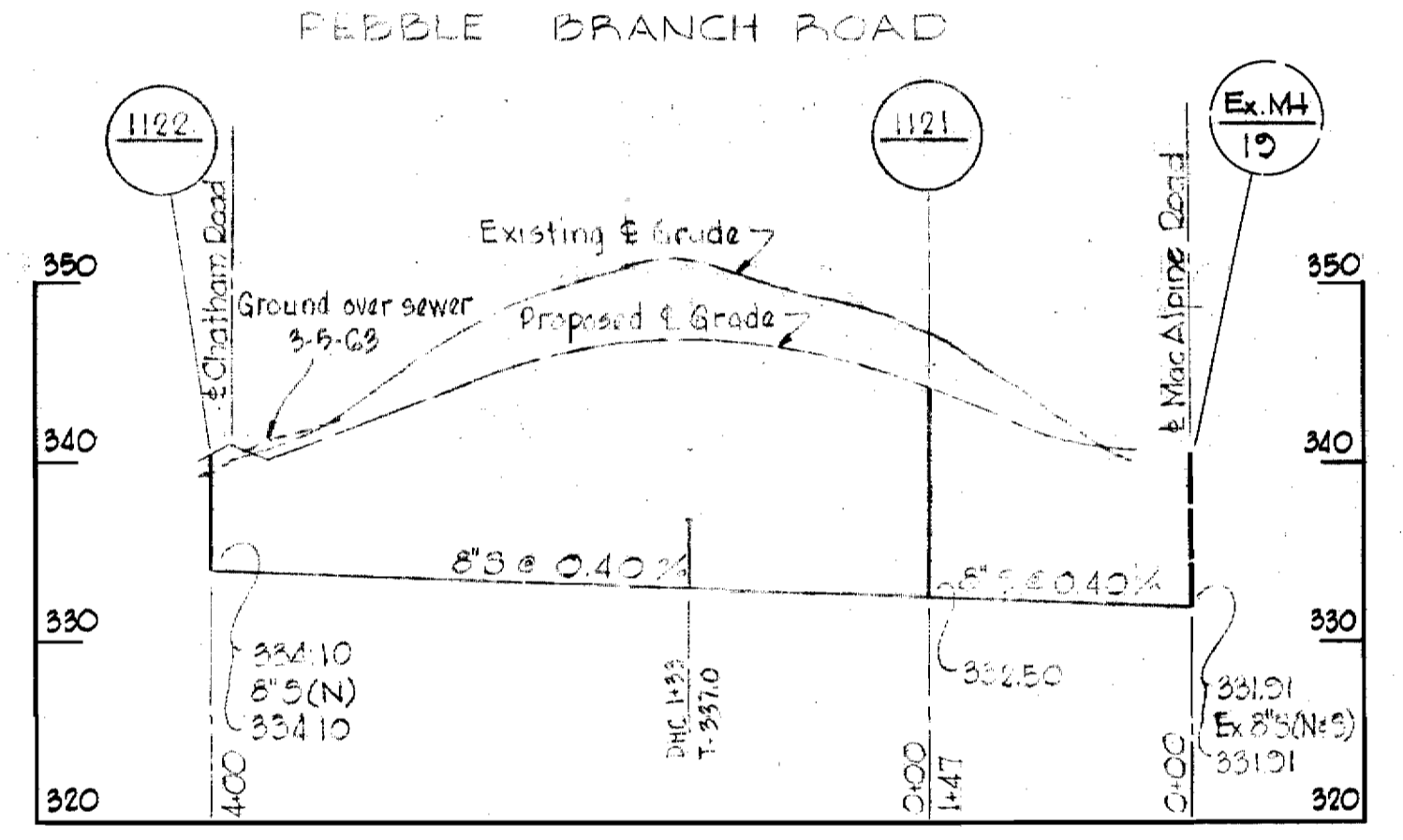
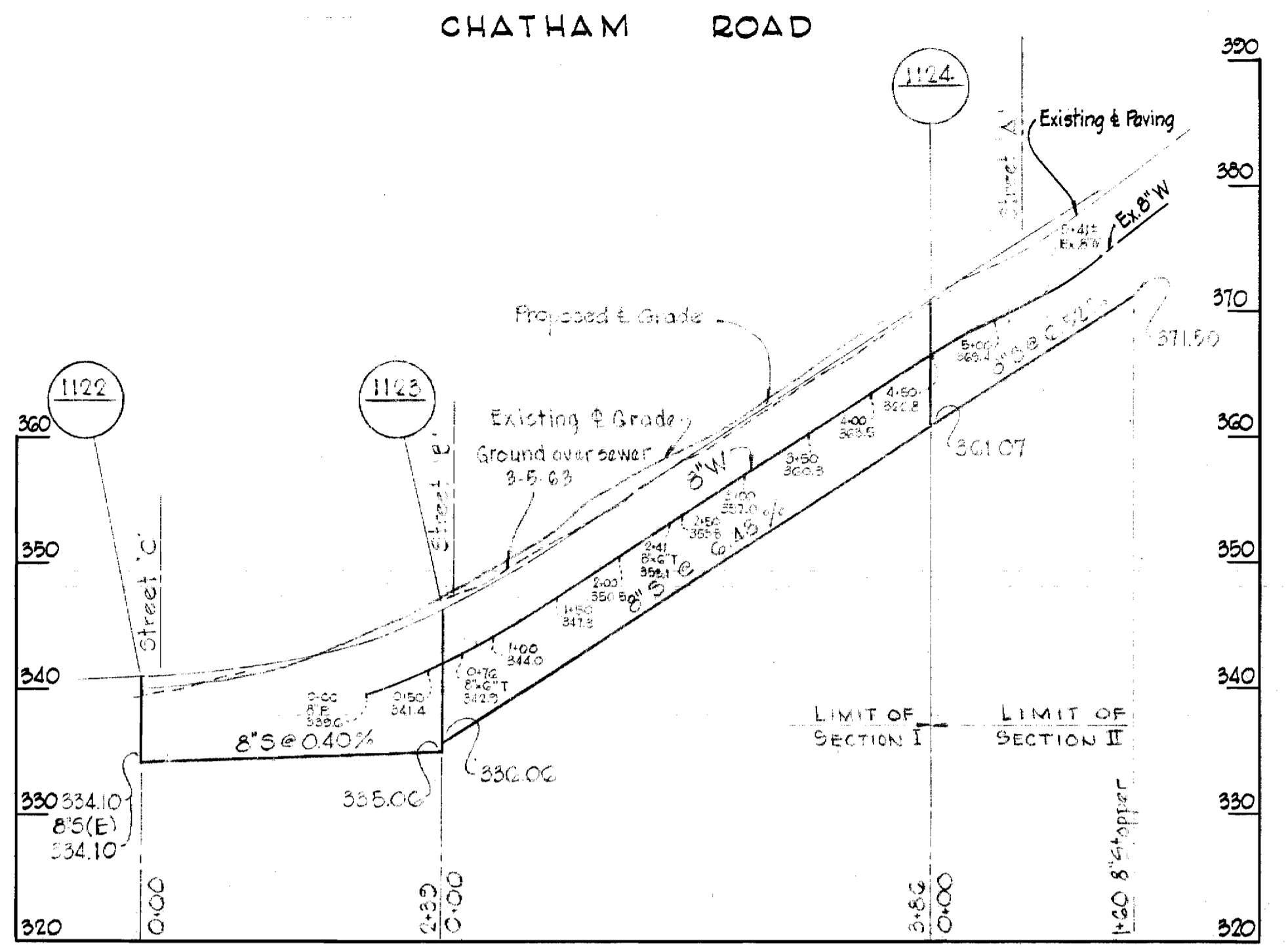
WS 52 W&S/1



BENCH MARKS
 W22A BM#516-4 Elev. 417.46
 22 spike in roof of 40' oak 225'± S of intersection of Chatham Road & Dunloggin Road, on west side of Chatham Road.
 W24A BM#510-2 Elev. 333.89
 22 spike in base of G&E pole #185714, 2'± left of sta. 0+20 between P1's 5 & 6.

PLAN
 Scale: 1" = 50'

Note:
 The existing & grade shown on the profiles was furnished by others. It is the Contractor's responsibility to verify the elevations prior to submitting the proposal.



PROFILES
 Scale: Hor. 1" = 100'
 Vert. 1" = 10'

GENERAL NOTES

1. Approximate location of existing mains are shown. The Contractor shall take all necessary precautions to protect the existing mains and services and maintain uninterrupted supply. Any damage incurred shall be repaired immediately.
2. All pipe elevations shown are invert elevations.
3. The Contractor shall locate existing utilities a minimum of two weeks in advance of construction operations in vicinity of utilities.
4. The location of all valves, fittings, etc. have been located in plan and dimensions shall be strictly adhered to unless otherwise directed by the Engineer in writing.
5. Bury line elevation on fire hydrants shall be set the same as edge of paving or as directed by the Engineer in the field.
6. For all standard details see Standards bound in the Specifications.
7. Block all fittings with concrete. See Standard Details.
8. All 8" Water to be Class 22 C.I.P.; water mains shall have a minimum of 3 1/2' cover unless otherwise noted.
9. Build all manholes to existing ground or paving unless otherwise shown or directed by the Engineer.

WHITMAN, REQUARDT & ASSOCIATES ENGINEERS 1304 ST. PAUL ST. BALTIMORE, MARYLAND	HOWARD COUNTY METROPOLITAN COMMISSION Feb. 7, 1963 <i>Carl W. Meyer</i> CHIEF ENGINEER	CONTRACT NO. 52 W&S	PLAN & PROFILE OF WATER & SEWER EXTENSIONS	ELLICOTT CITY SUB-DISTRICT	Contract No. 52 W&S
					DRAWING NO. 1 OF 1

W. O. 5125-2

AS BUILT 29 MAY 63