

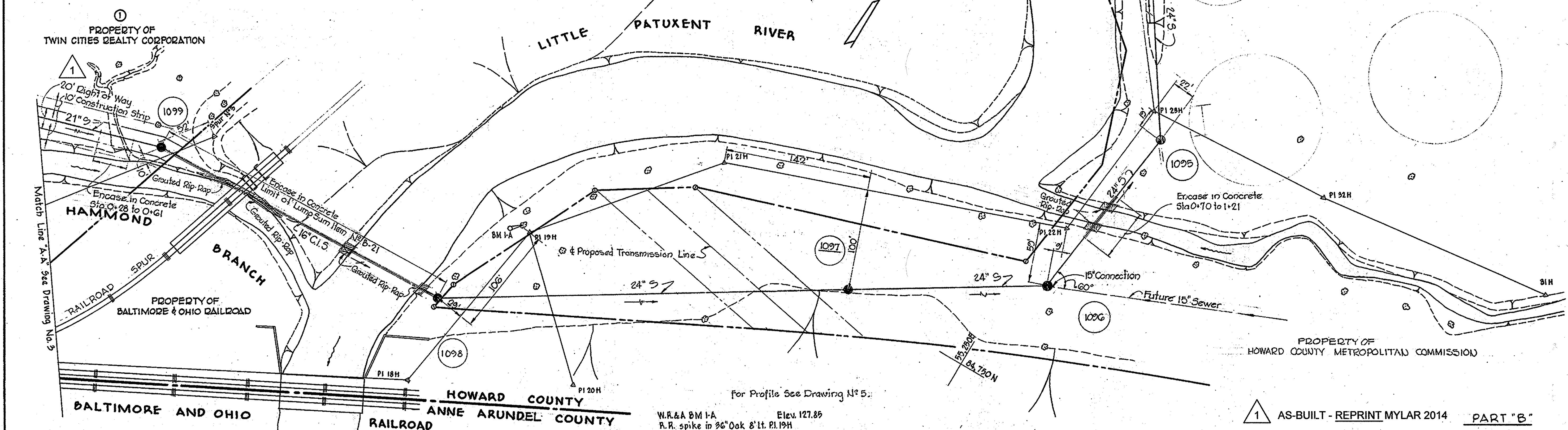
CONTRACT 50-S  
 HAMMOND BRANCH INTERCEPTOR  
 HOWARD COUNTY METROPOLITAN COMMISSION  
 PATUXENT SUB-DISTRICT

AS-BUILT - REPRINT MYLAR 2014

WHITMAN, REQUARDT & ASSOCIATES ENGINEERS 1304 ST. PAUL ST. BALTIMORE, MARYLAND	HOWARD COUNTY METROPOLITAN COMMISSION Jan. 21, 1963 <i>Carl W. Meyer</i> CHIEF ENGINEER	CONTRACT NO. 50-S	LOCATION MAP	PATUXENT SUB-DISTRICT	DRAWING NO. 1 OF 5 SCALE AS SHOWN
---	--	-------------------	--------------	-----------------------	--------------------------------------

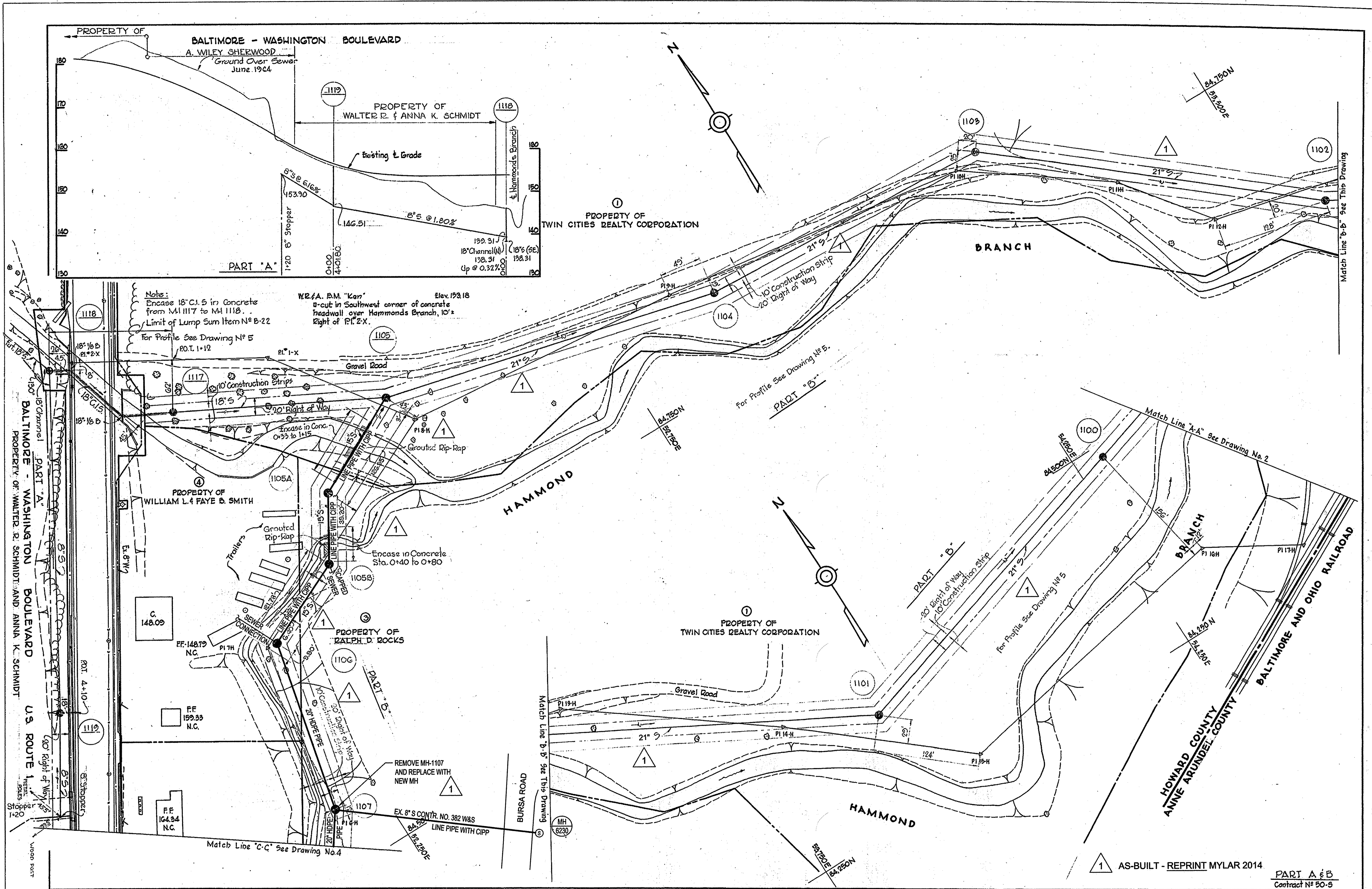
**GENERAL NOTES**

1. Approximate location of existing mains are shown. The Contractor shall take all necessary precautions to protect the existing mains and services and maintain uninterrupted supply. Any damage incurred shall be repaired immediately.
2. All pipe elevations shown are invert elevations.
3. The Contractor shall locate existing utilities a minimum of two weeks in advance of construction operations in vicinity of utilities.
4. For all standard details see Standards bound in Specifications.
5. Before digging pipe, pushing or doing other work near Telephone Cables call collect anytime Lexington 2-9900 Ext. 553, 554 or 555, Baltimore Maryland.
6. Clear all poles by 2'-0" minimum.
7. Build all manholes to existing ground or paving unless otherwise shown or directed by the Engineer.
8. All 16" Cast Iron Sewer mains shall be Class 22 unless otherwise noted.
9. All sewers shall be V.C.P.X., C.S.P.X. or Asbestos Cement Class 2400 unless otherwise noted.
10. Cost of grouted rip-rap to be included in the unit price bid for excavation and backfill of sewers.
11. CONSTRUCTION IN 2014 INCLUDES REPLACEMENT OF THE EXISTING SEWER FROM MH 1110 TO MH 1106 WITH 20" HDPE PIPE INSTALLED VIA PIPE BURSTING AND REHABILITATION OF THE SEWER FROM MH 1106 TO MH 1105 WITH CIPP LINER.
12. THE AS-BUILT MANHOLE RIM ELEVATIONS AND INVERT ELEVATIONS ARE SURVEYED USING NAVD 88 VERTICAL DATUM AND DERIVED FROM THE FOLLOWING HOWARD COUNTY CONTROL POINTS:  
 47ID N. 529698.859 E. 1361467.982 ELEV. 180.229  
 47FC N. 532305.328 E. 1362985.099 ELEV. 186.420  
 NOTE: HORIZONTAL CONTROL DATUM FOR 47ID AND 47FC ARE BASED ON NAD 83/91(2007 ADJUSTED)
13. THE MANHOLE RIM ELEVATIONS AND PIPE INVERT ELEVATIONS SHOWN ON THE PROFILE ARE CONVERTED TO THE ORIGINAL CONTRACT DATUM (NGVD 29).



WHITMAN, REQUARDT & ASSOCIATES ENGINEERS 1304 ST. PAUL ST. BALTIMORE, MARYLAND	HOWARD COUNTY METROPOLITAN COMMISSION Jan. 21, 1965 DATE Carl W. Meyer CHIEF ENGINEER	CONTRACT NO. 50-S	PLAN OF SEWER MAIN	PATUXENT SUB-DISTRICT	DRAWING NO. 2 OF 5 SCALE 1"=50' PART "B" Contract N°50-S
---	---	-------------------	--------------------	-----------------------	---



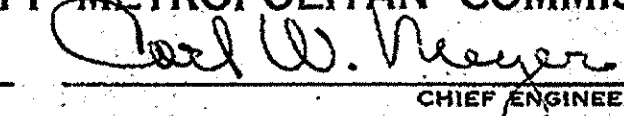


Note:  
 Encase 18" C.I.S in Concrete  
 from M1117 to M1118.  
 Limit of Lump Sum Item N<sup>o</sup> B-22  
 For Profile See Drawing N<sup>o</sup> 5  
 P.O.T. 1+12

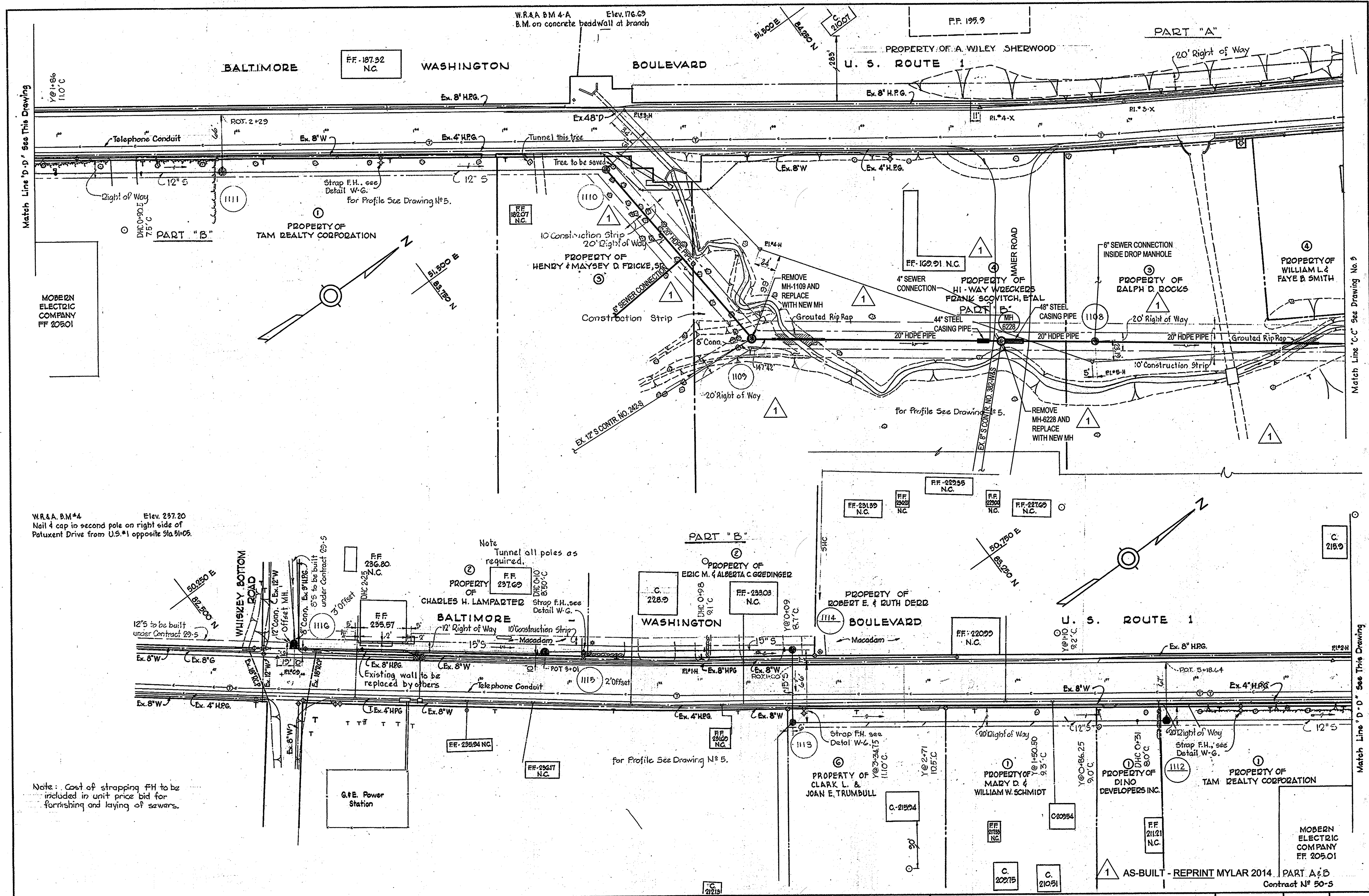
W.F.A. B.M. "Kan" Elev. 153.18  
 11-cut in Southwest corner of concrete  
 headwall over Hammonds Branch, 10'±  
 Right of P.F. 2'X.

AS-BUILT - REPRINT MYLAR 2014.

PART A & B  
 Contract N<sup>o</sup> 50-5

WHITMAN, REQUARDT & ASSOCIATES ENGINEERS 1304 ST. PAUL ST. BALTIMORE, MARYLAND	HOWARD COUNTY METROPOLITAN COMMISSION Jan. 21, 1963 DATE  CHIEF ENGINEER	CONTRACT NO. 50-S	PLAN OF SEWER MAIN	PATUXENT SUB - DISTRICT	DRAWING NO. 3 OF 5	SCALE 1"=50' <small>43 NE 18-244          43 NE 19-3</small>
---	--	-------------------	-----------------------	-------------------------	--------------------------	--





Match Line 'D-D' See This Drawing

Match Line 'C-C' See Drawing No. 9

Match Line 'D-D' See This Drawing

W.R.&A. B.M.#4 Elev. 297.20  
Nail 4 cap to second pole on right side of  
Potuxent Drive from U.S.#1 opposite 51a 5105.

Note: Tunnel all poles as required.

Note: Cost of strapping FH to be included in unit price bid for furnishing and laying of sewers.

WHITMAN, REQUARDT & ASSOCIATES ENGINEERS 1304 ST. PAUL ST. BALTIMORE, MARYLAND	HOWARD COUNTY METROPOLITAN COMMISSION Jan. 21, 1963 <i>Carl W. Meyer</i> CHIEF ENGINEER	CONTRACT NO. 50-S	PLAN OF SEWER MAIN	PATUXENT SUB - DISTRICT	DRAWING NO. 4 OF 5 SCALE 1"=50' <small>42-MET-244 42-MET-1-42-MET-5 F.B. 1975, 2099</small>
---	--	-------------------	-----------------------	-------------------------	---

REPLACEMENT SHEET AS BUILT 17 DEC 65



