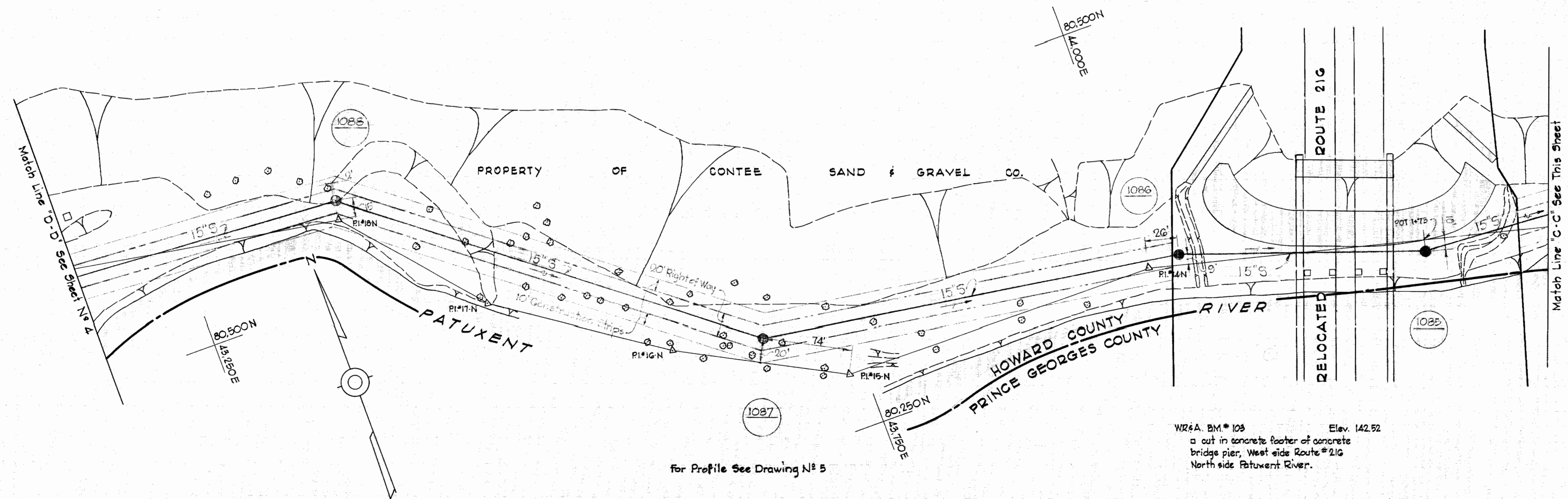
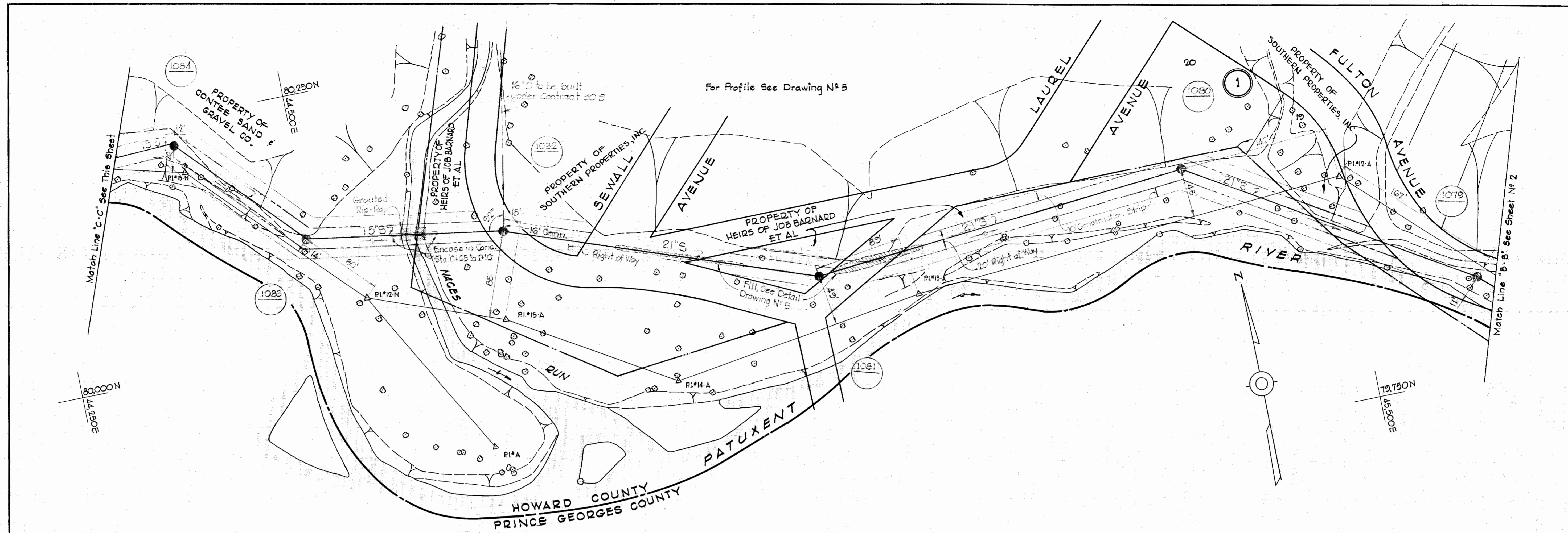


CONTRACT 49-S
 PATUXENT RIVER INTERCEPTOR
 HOWARD COUNTY METROPOLITAN COMMISSION
 PATUXENT SUB-DISTRICT

1/5 49 S/1
 SM

WHITMAN, REQUARDT & ASSOCIATES ENGINEERS 1304 ST. PAUL ST. BALTIMORE, MARYLAND	HOWARD COUNTY METROPOLITAN COMMISSION Jan. 21, 1963 <small>DATE</small> <small>CHIEF ENGINEER</small>	CONTRACT NO. 49-S	LOCATION MAP	PATUXENT SUB-DISTRICT	Contract 49-S DRAWING NO. 1 OF 5 SCALE AS SHOWN
---	--	-------------------	--------------	-----------------------	---

W. O. 4955-2



W26A, BM # 103 Elev. 142.52
 a cut in concrete footer of concrete
 bridge pier, West side Route #216
 North side Patuxent River.

for Profile See Drawing N^o 5

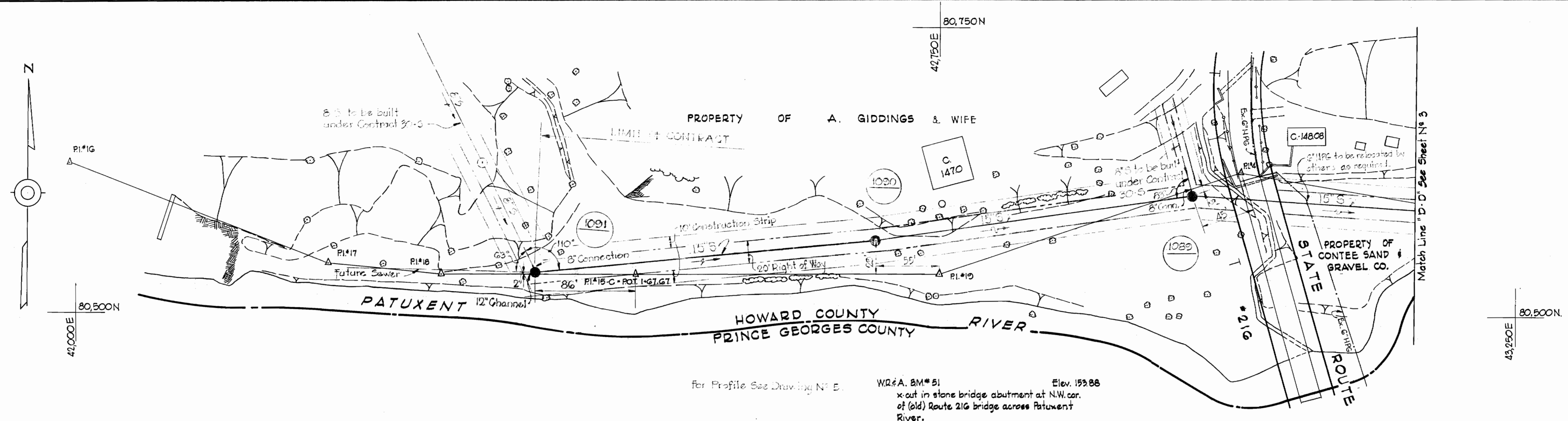
Contract 49-S

WHITMAN, REQUARDT & ASSOCIATES ENGINEERS 1304 ST. PAUL ST. BALTIMORE, MARYLAND	HOWARD COUNTY METROPOLITAN COMMISSION Jan. 21, 1963 DATE <i>Carl W. Meyer</i> CHIEF ENGINEER	CONTRACT NO. 49-S	PLAN OF SEWER MAINS	PATUXENT SUB - DISTRICT	DRAWING NO. 3 OF 5	SCALE 1"=50' <small>NO. 10-1 20 11-18-64 78 2601 24 95 8883</small>
---	--	-------------------	------------------------	-------------------------	--------------------------	---

W. O. 4955-2

AS BUILT 22 OCT. 65

WS 4955/3



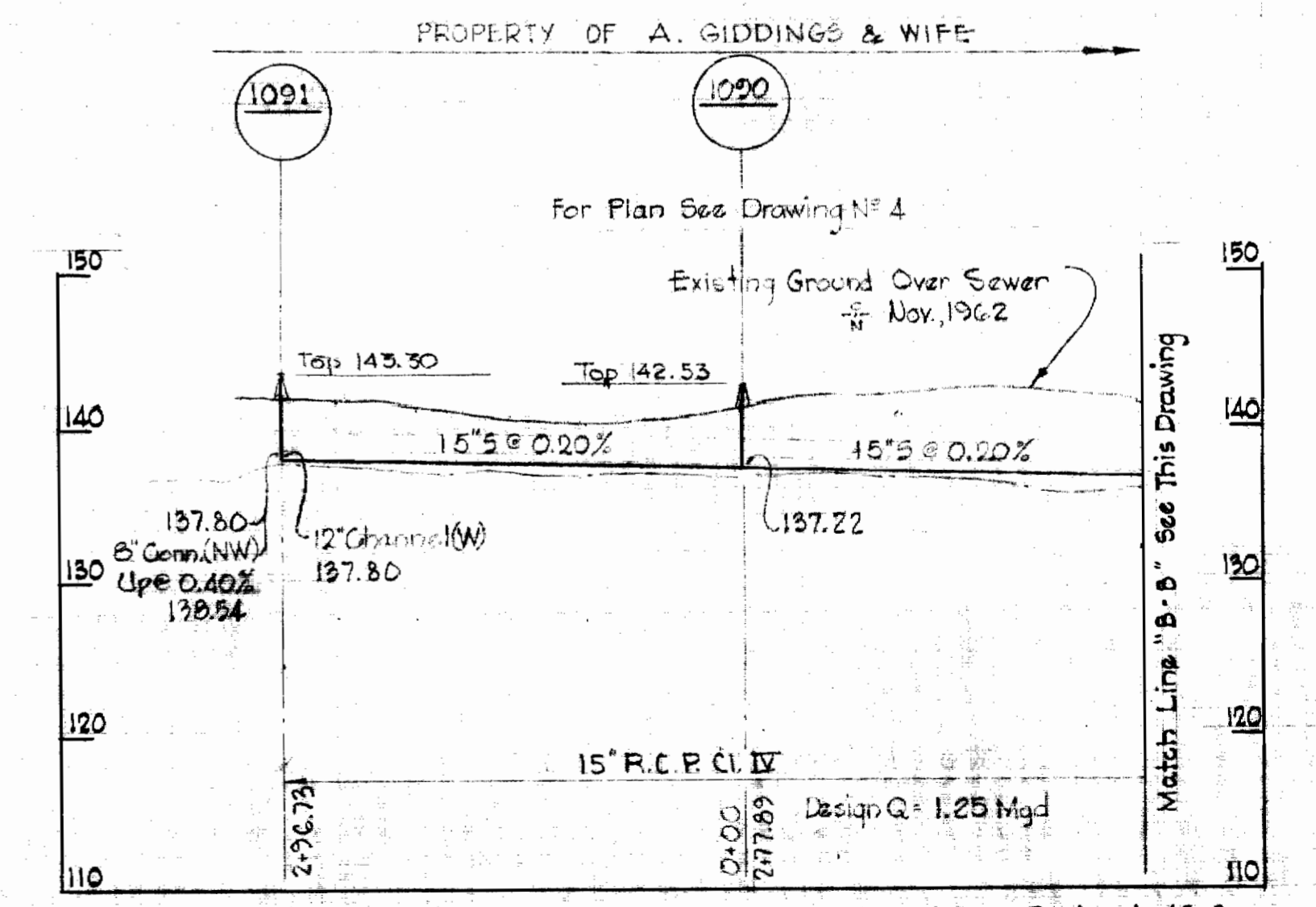
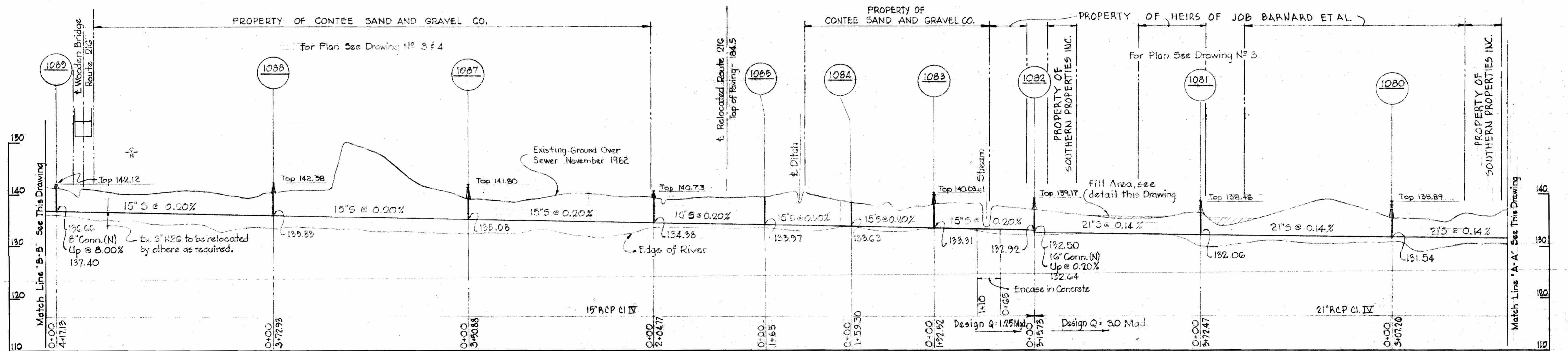
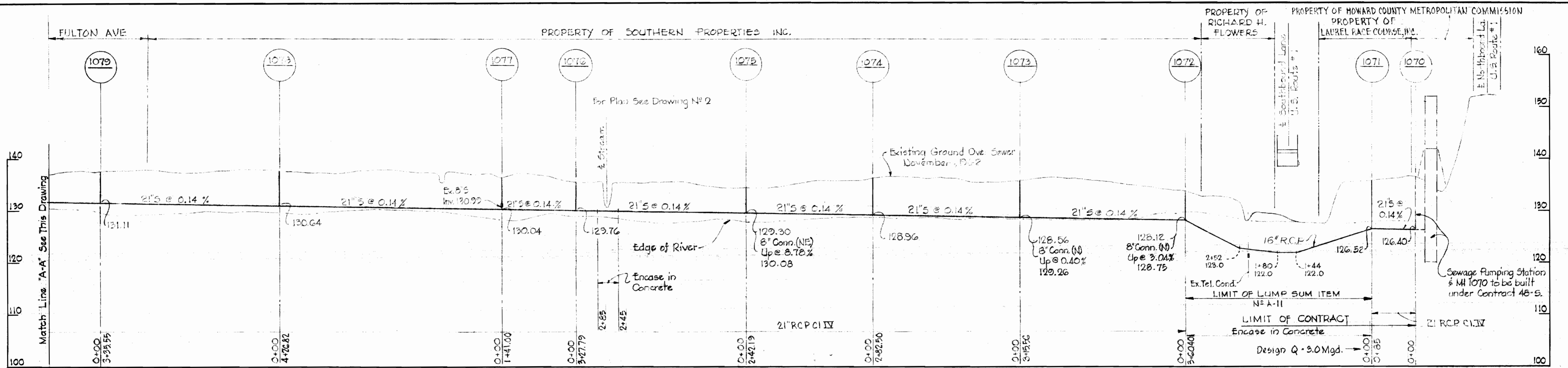
for Profile See Drawing No. E.
 W.R.# A. 8M# 51
 x-cut in stone bridge abutment at N.W. cor.
 of (old) Route 216 bridge across Patuxent
 River. Elevation 153.88

GENERAL NOTES

1. Approximate location of existing mains are shown. The Contractor shall take all necessary precautions to protect the existing mains and services and maintain uninterrupted supply. Any damage incurred shall be repaired immediately.
2. All pipe elevations shown are invert elevations.
3. The Contractor shall locate existing utilities a minimum of two weeks in advance of construction operations in vicinity of utilities.
4. For all standard details see Standards bound in Specifications.
5. Before digging pipe, pushing or doing other work near telephone cables call collect anytime Lexington 9-9900 Ext. 553, 554 or 555, Baltimore, Maryland.
6. Build all manholes to existing ground or paving unless otherwise shown or directed by the Engineer.
7. All 16" Cast Iron Sewer mains shall be Class 22 unless otherwise noted.
8. All sewers shall be V.C.P.X., C.S.P.X. or Asbestos Cement Class 2400 unless otherwise noted.
9. Cost of grouted pipe top to be included in the unit price bid for excavation and backfill of sewers.

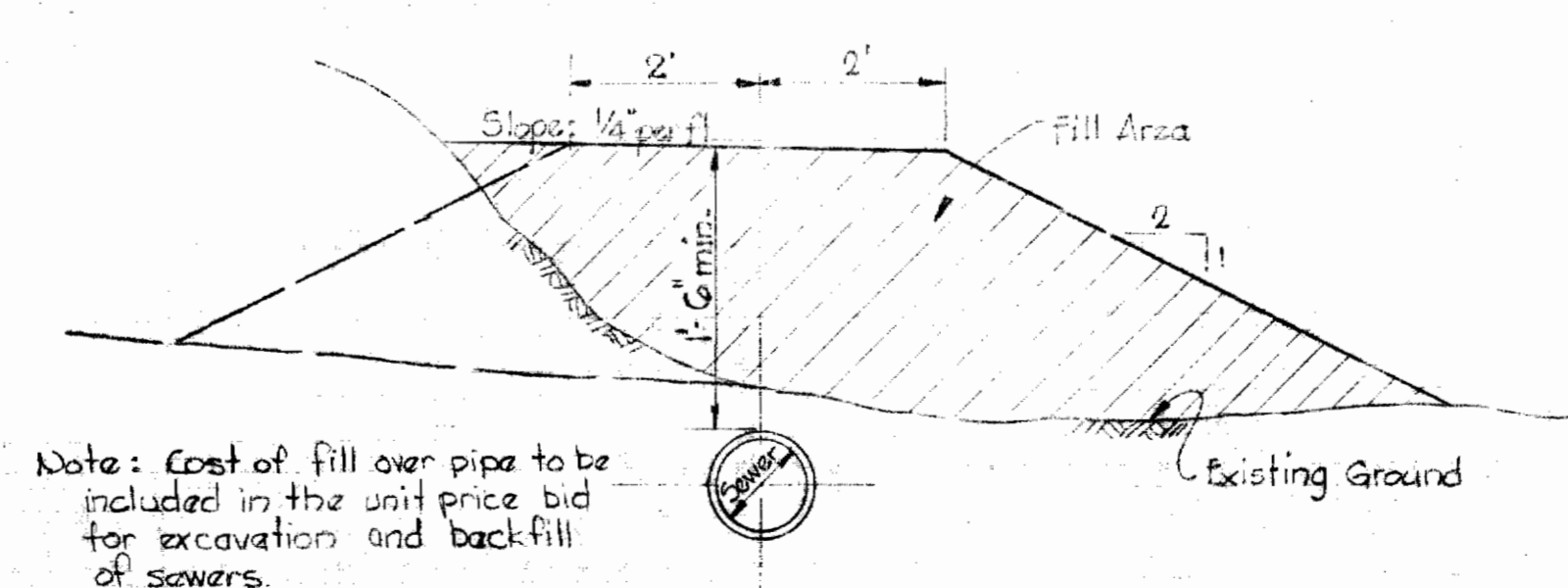
495/4 SM

WHITMAN, REQUARDT & ASSOCIATES ENGINEERS 1304 ST. PAUL ST. BALTIMORE, MARYLAND	HOWARD COUNTY METROPOLITAN COMMISSION Jan. 21, 1963 <i>Carl W. Meyer</i> CHIEF ENGINEER	CONTRACT NO. 49-S	PLAN & PROFILES OF SEWER MAIN	PATUXENT SUB - DISTRICT	DRAWING NO. 4 OF 5	SCALE AS SHOWN
--	---	--------------------------	--	--------------------------------	---------------------------	-----------------------



Note:
1. All manhole frames and covers shall be watertight, Dewey Bros. Inc. RCR C3A or approved equal.

Note:
Fill around all manholes with tops above existing ground. Min side slope 2:1.



TYPICAL FILL DETAIL
No Scale

WHITMAN, REQUARDT & ASSOCIATES ENGINEERS 1304 ST. PAUL ST. BALTIMORE, MARYLAND	HOWARD COUNTY METROPOLITAN COMMISSION Jan. 21, 1963 DATE <i>Carl W. Meyer</i> CHIEF ENGINEER	CONTRACT NO. 49-S	PROFILES	PATUXENT SUB - DISTRICT	DRAWING NO. 5	SCALE H 1"=100' V 1"=10'
					OF 5	Contract 49-5

W. O. 4955-2

AS BUILT 22 OCT. 65

WS 49 S/5