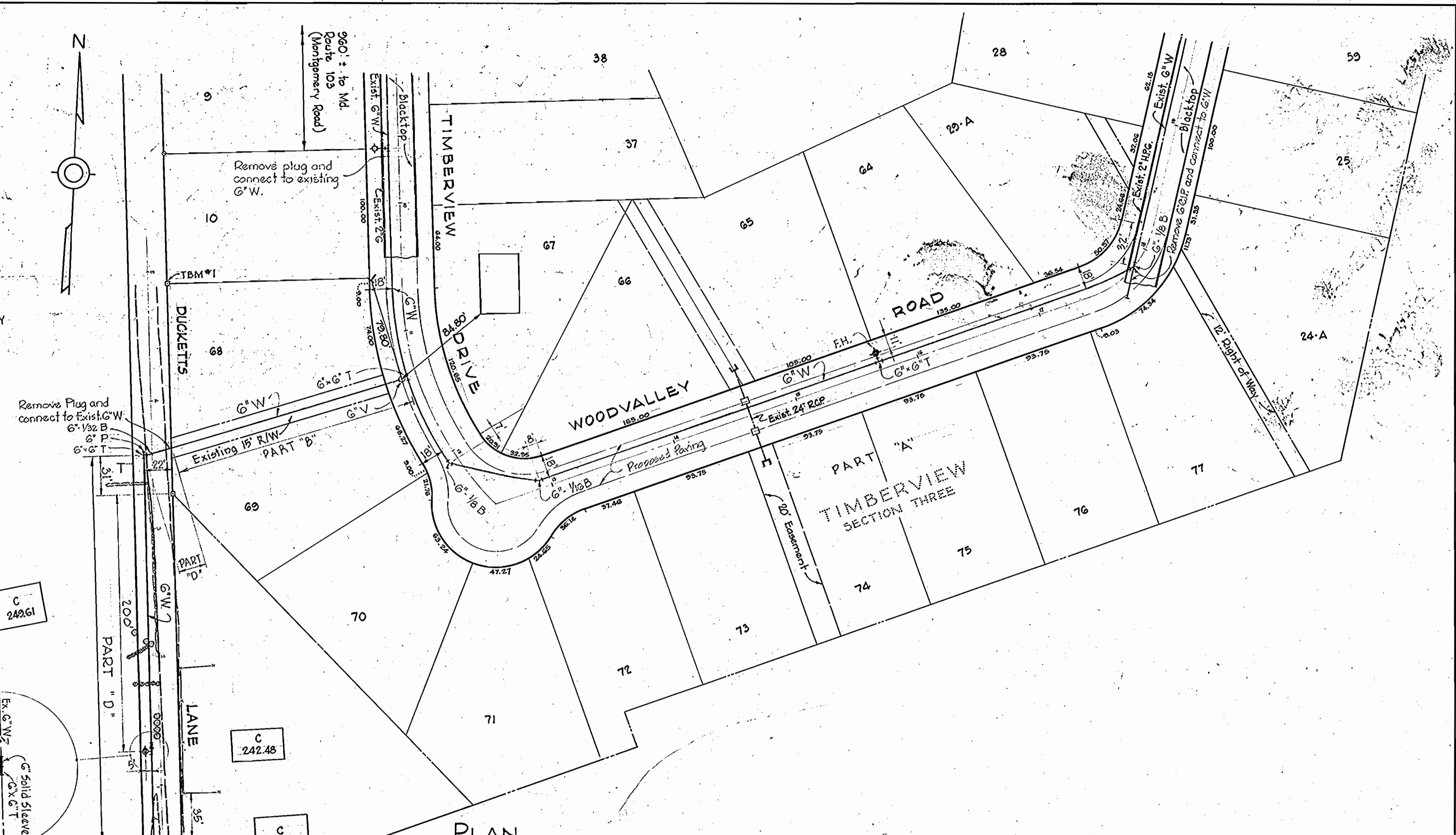


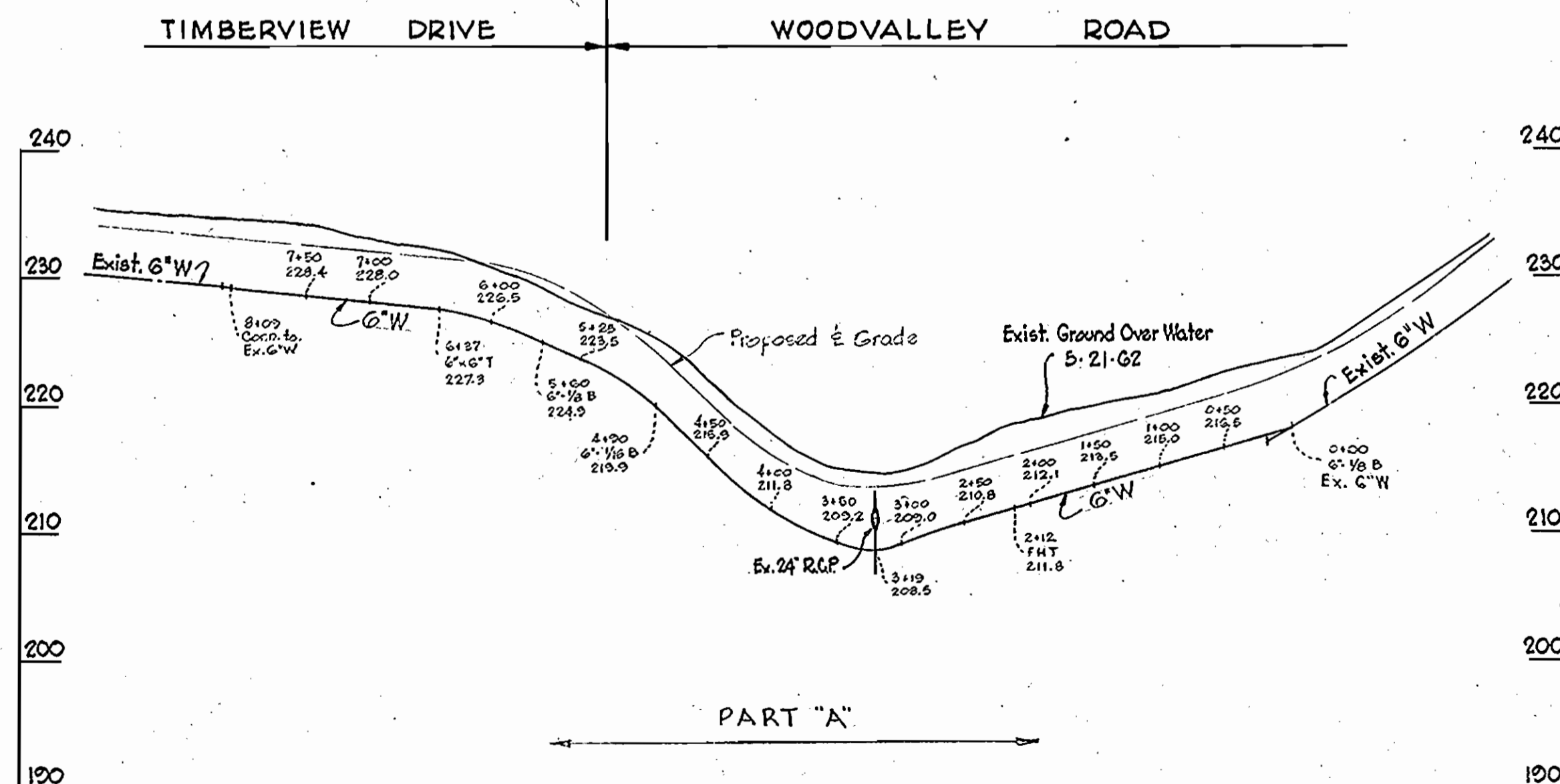
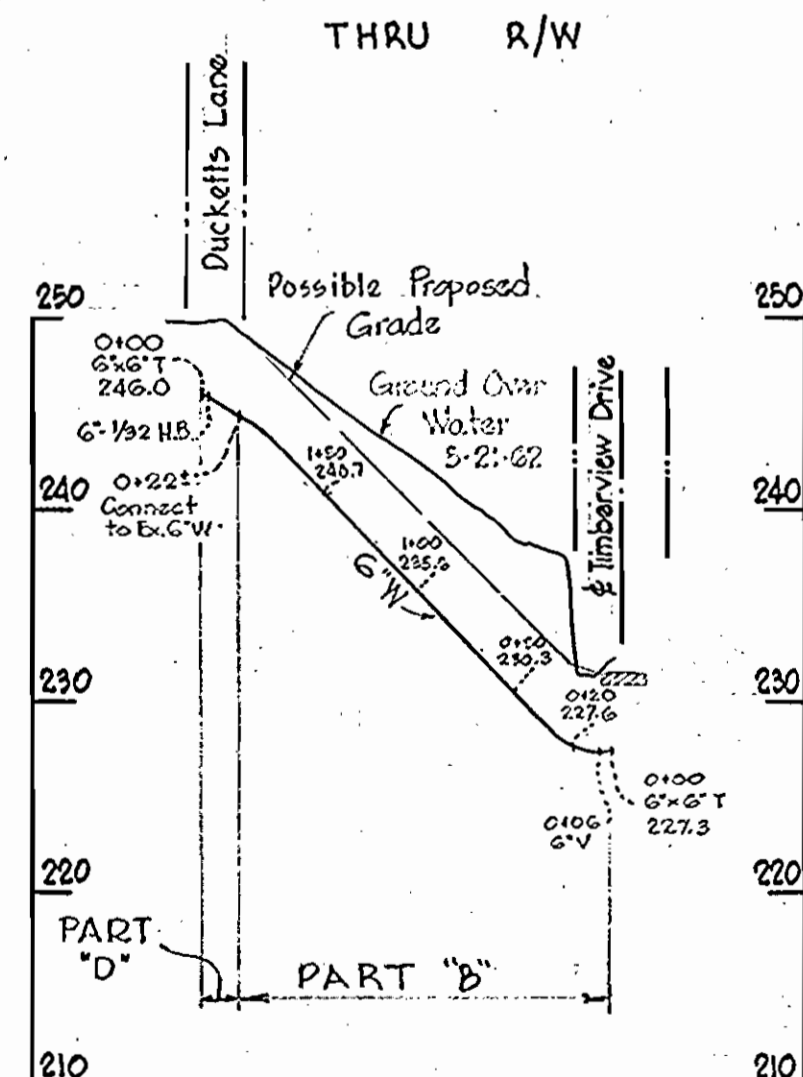
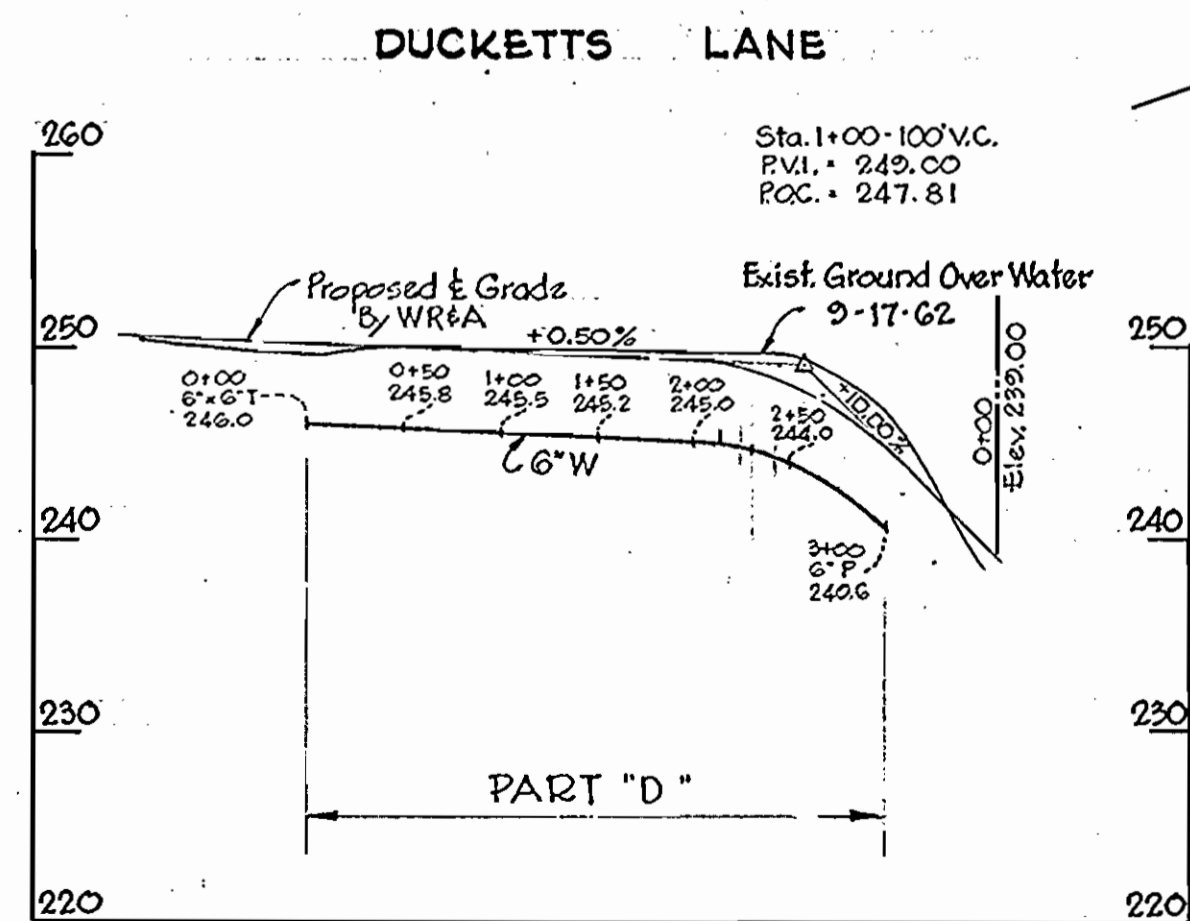
D.M. #20 Elev. 255.89  
 R.R. Spike in base of 12" Oak 50' West  
 of Intersection Forest Hill Rd. and  
 Timberview Rd.

**GENERAL NOTES**

1. Approximate location of existing mains are shown. The Contractor shall take all necessary precautions to protect the existing mains and services, and maintain uninterrupted supply. Any damage incurred shall be repaired immediately.
2. All pipe elevations shown are invert elevations.
3. The Contractor shall locate existing utilities a minimum of two weeks in advance of construction operations in vicinity of utilities.
4. The location of all valves, fittings etc. have been located in plan and dimensions shall be strictly adhered to unless otherwise directed by the Engineer in writing.
5. Bury line elevation on Fire Hydrants shall be set the same as the edge of paving or as directed by the Engineer in the field.
6. For all standard details see Standards bound in specifications.
7. Block all fittings with concrete. See Standard Details.
8. Unless otherwise noted, all G.W. to be Class 22 C.I.P. Water mains to have a minimum of 3 1/2' cover unless otherwise noted.



**PLAN**  
 Scale: 1"=50'



**PROFILE**

Scale: H: 1"=100'  
 V: 1"=10'

'TIMBERVIEW'  
 SECTION - 3  
 AS BUILT  
 Contract No. 44-W

WHITMAN, REQUARDT & ASSOCIATES  
 ENGINEERS  
 1304 ST. PAUL ST.  
 BALTIMORE, MARYLAND

HOWARD COUNTY METROPOLITAN COMMISSION

5-25-67  
 DATE

*Carl W. Meyer*  
 CHIEF ENGINEER

CONTRACT NO. 44-W  
 PART "D"

PLAN & PROFILE  
 OF WATER MAINS

ELKRIDGE SUB-DISTRICT

DRAWING  
 NO. 1  
 OF 1

SCALE  
 AS  
 SHOWN

WS 44W/1 PART "D"