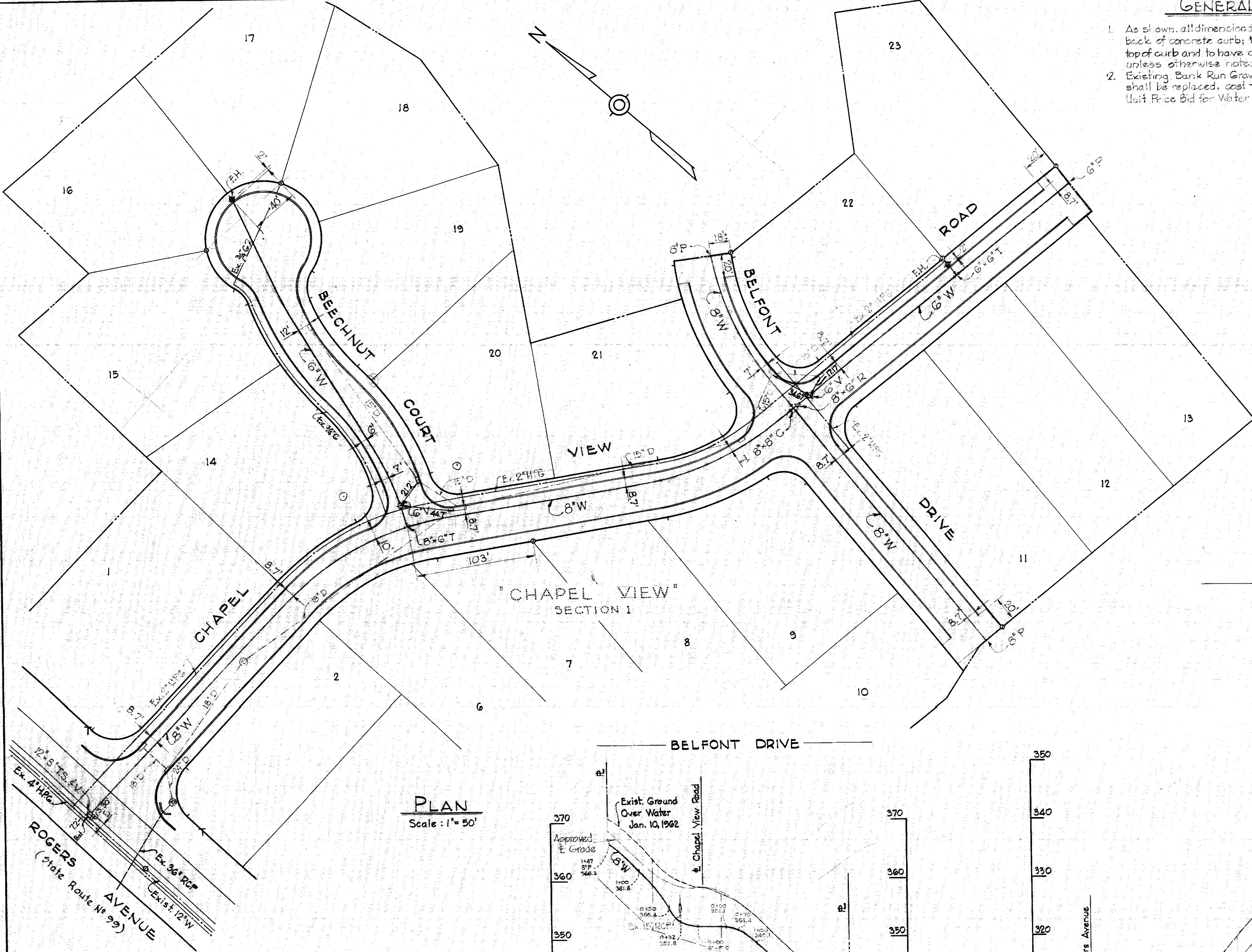
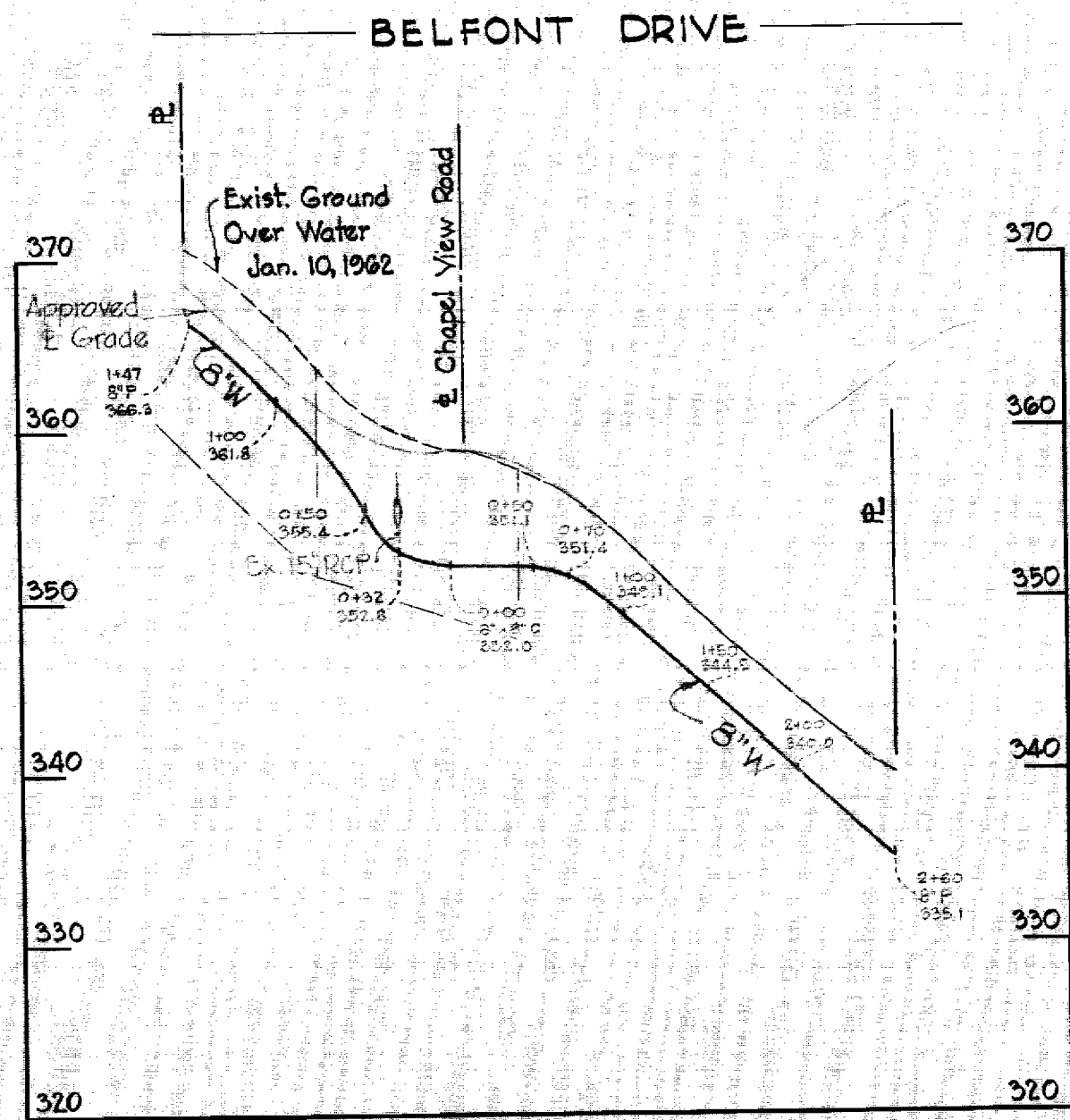
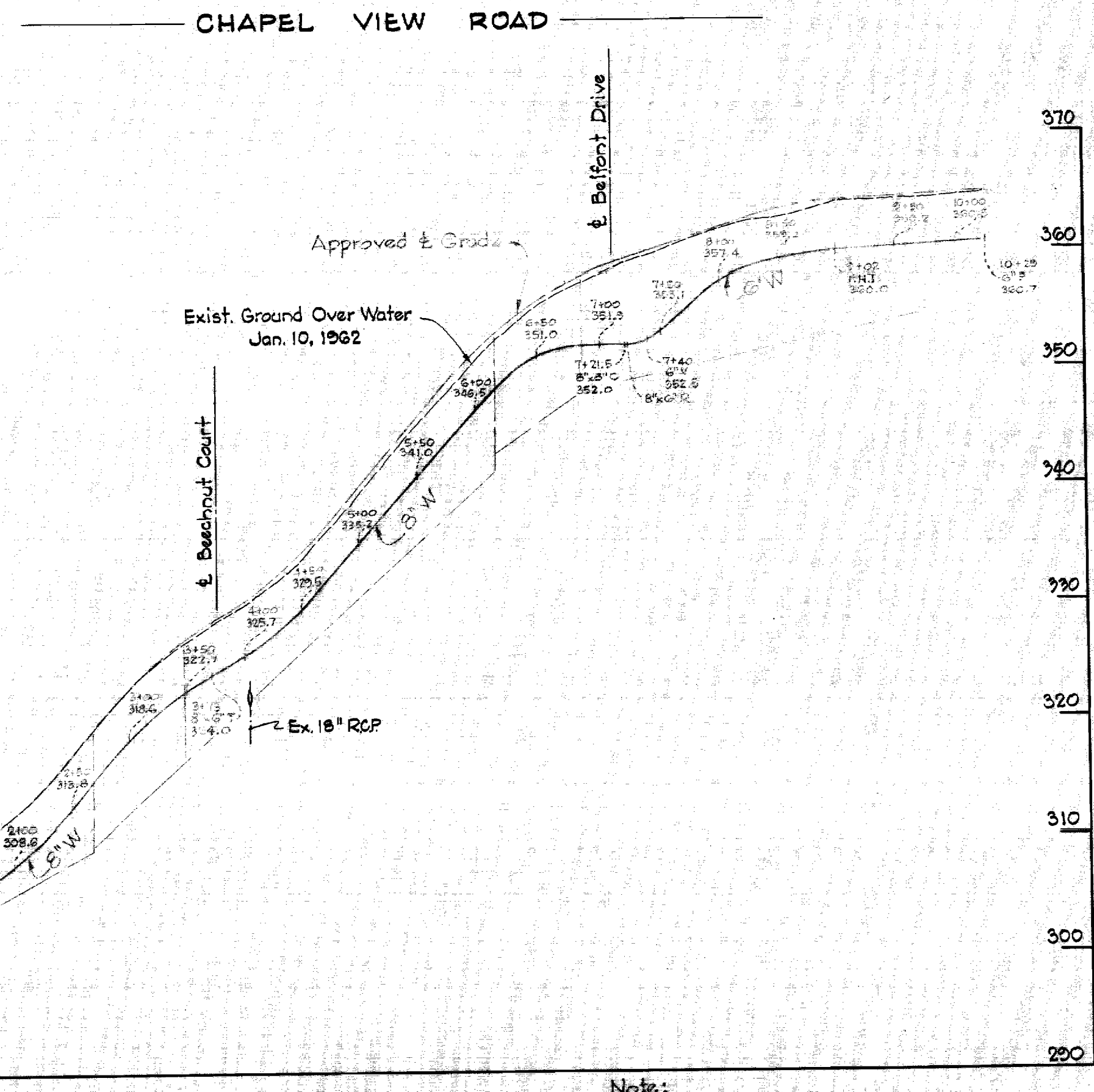
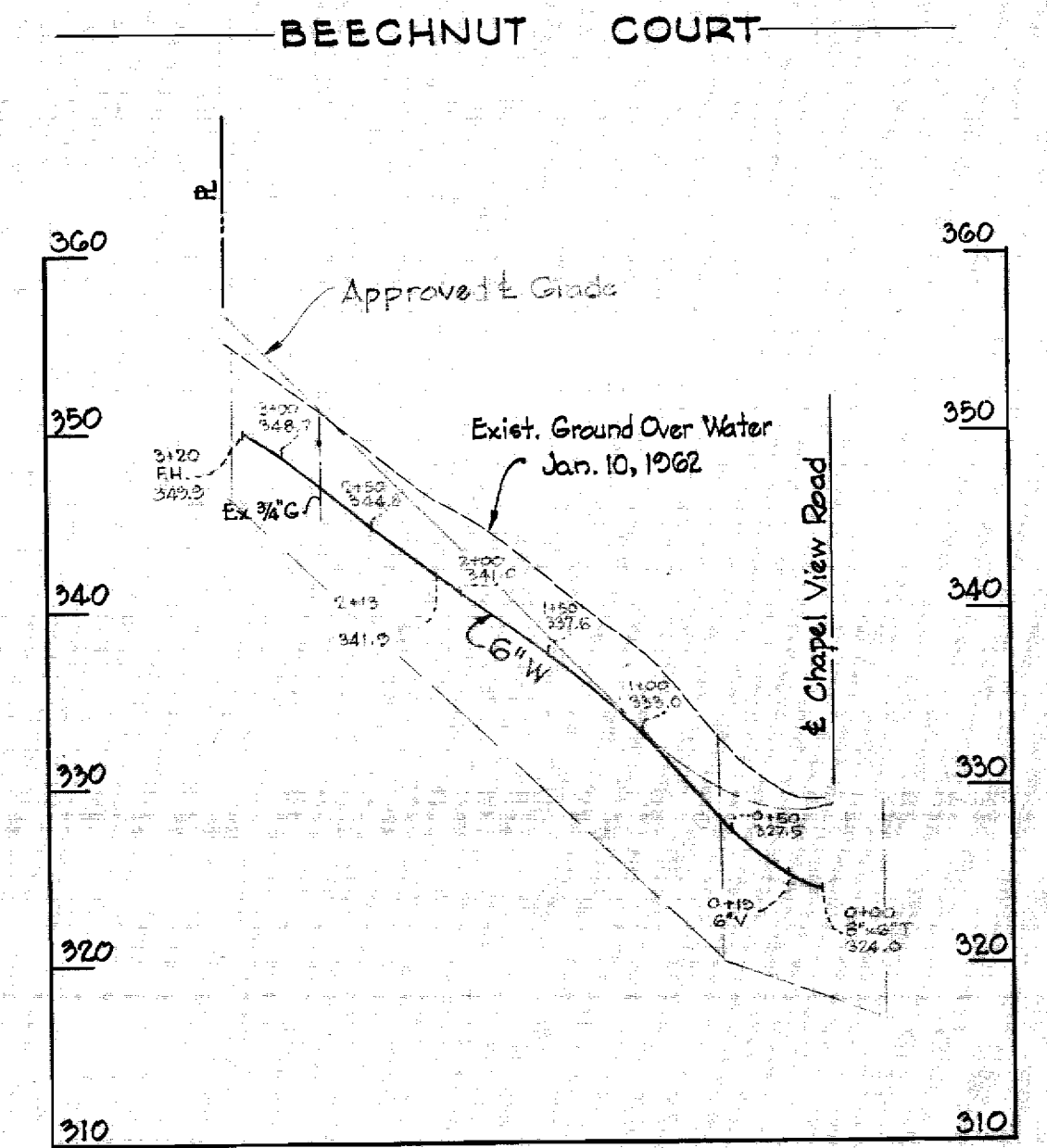


GENERAL NOTES

1. As shown, all dimensions to water mains are from back of concrete curb; top of mains to be 4.1' below top of curb and to have a minimum of 3.5' cover unless otherwise noted.
2. Existing Bank Run Gravel sub base on roads shall be replaced, cost to be included in the Unit Price Bid for Water Mains.



PLAN
Scale: 1" = 50'

PROFILE
H: 1" = 100'
V: 1" = 10'

Note:
Fire Hydrant location revised in Beechnut Court - February 22, 1962

AS BUILT
Contract No. 39-W

WR & A. BM. #24 Elev. 297.41
R.R. spike in base G & E Pole # 203399 E. side of Rogers Ave., 0.2 mile N. of Frederick Road.

WR & A. BM. #23 Elev. 328.18
R.R. spike in root of 24" Beech E. side of Rogers Ave., 0.4 mile N. of Frederick Road, in front of white shingle house.

WHITMAN, REQUARDT & ASSOCIATES ENGINEERS 1304 ST. PAUL ST. BALTIMORE, MARYLAND	HOWARD COUNTY METROPOLITAN COMMISSION DATE: Feb. 13, 1962 CHIEF ENGINEER: <i>Carl W. Meyer</i>	CONTRACT NO. 39-W	PLAN AND PROFILES OF WATER MAINS	ELLCOTT CITY SUB-DISTRICT	DRAWING NO. 1	SCALE AS SHOWN
					OF 1	95W 37

AS BUILT JUNE 8, 1962

WS 39W/1