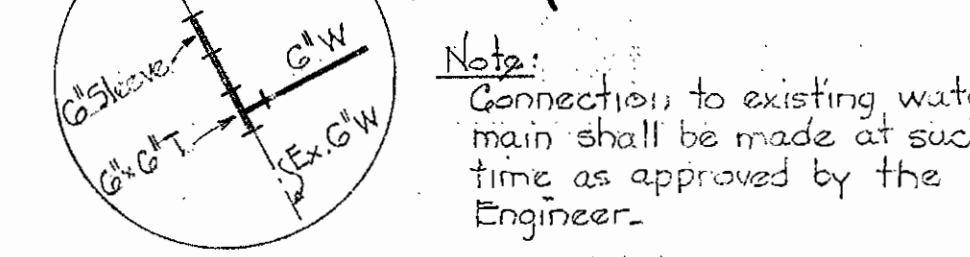
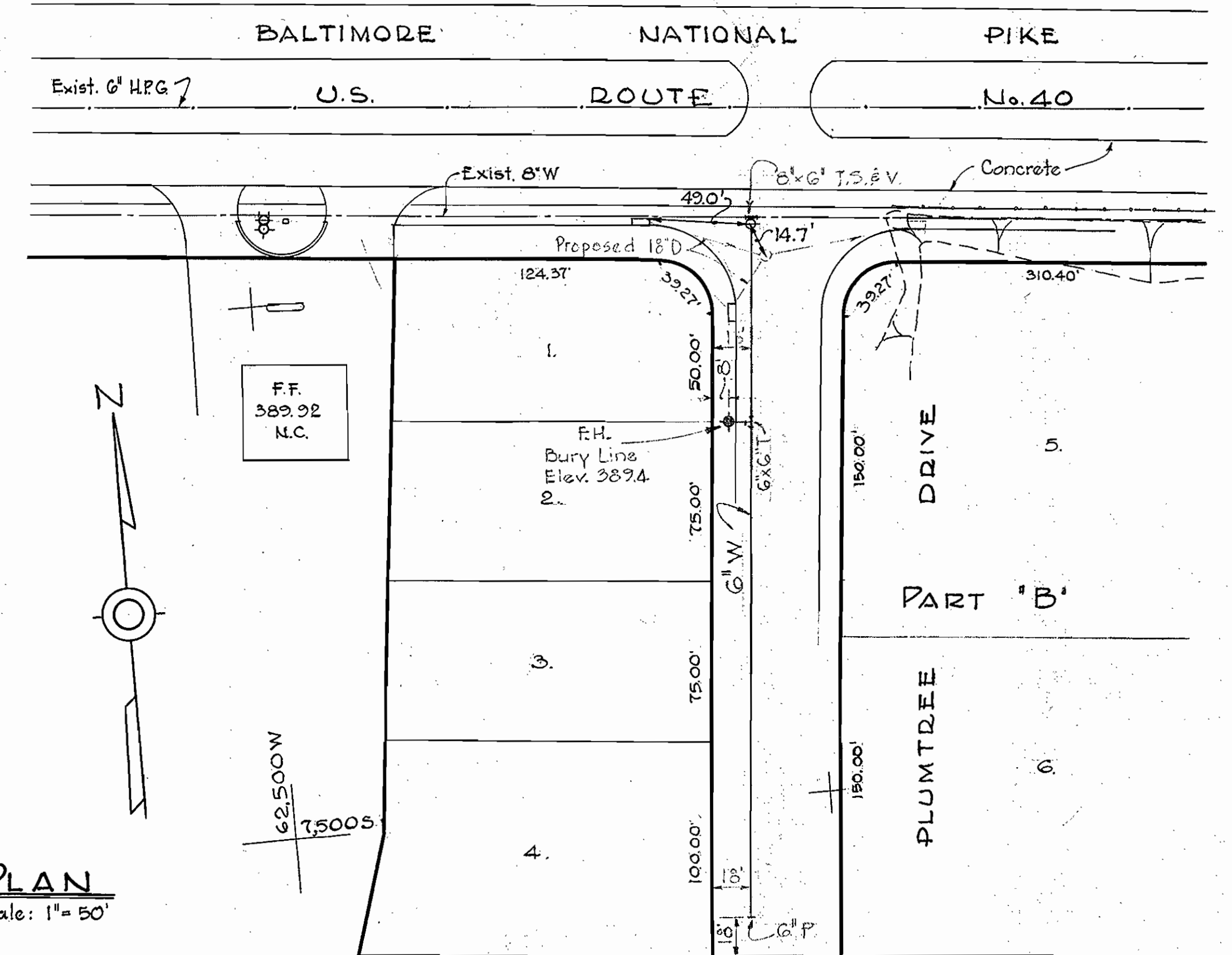
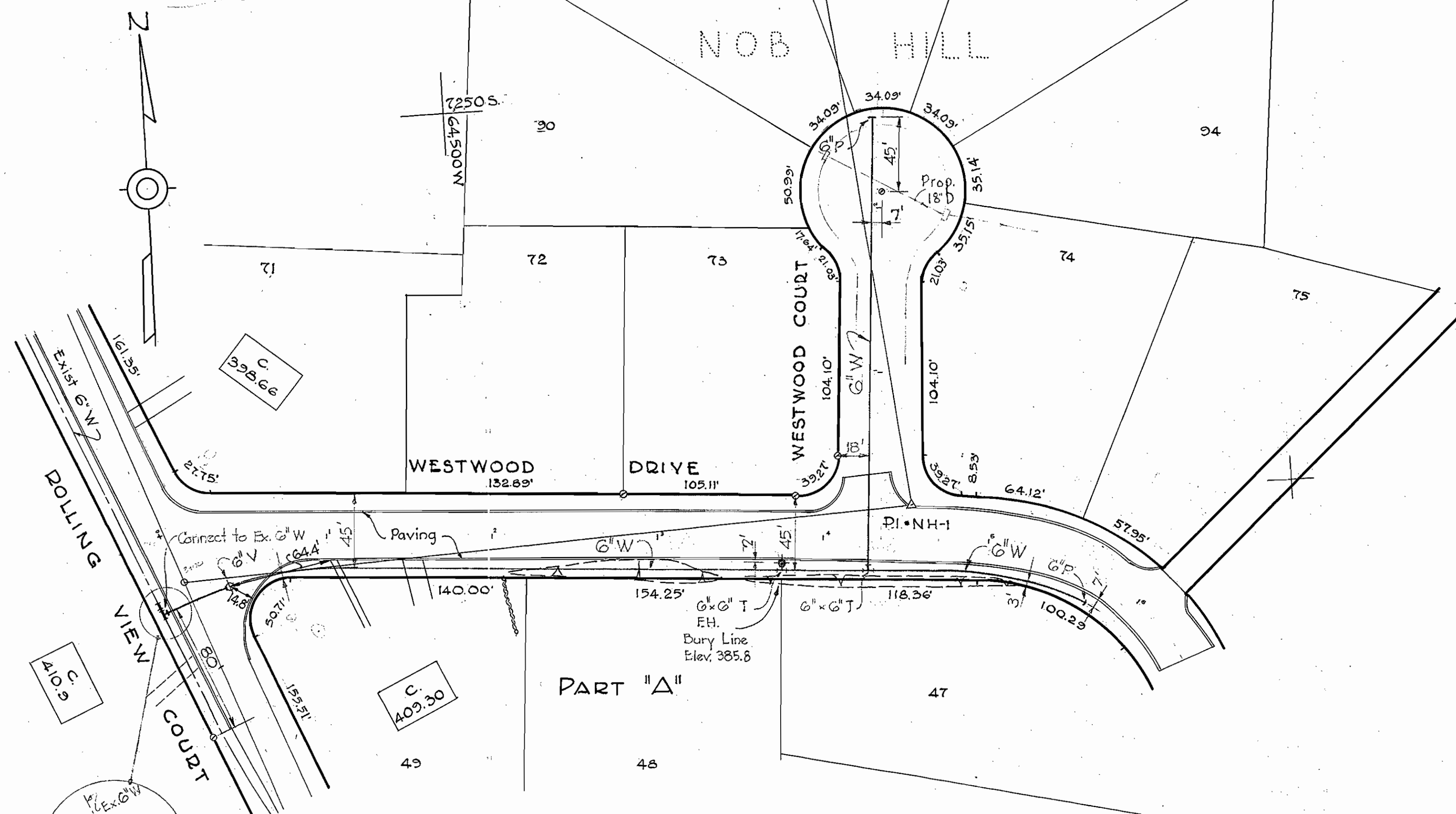


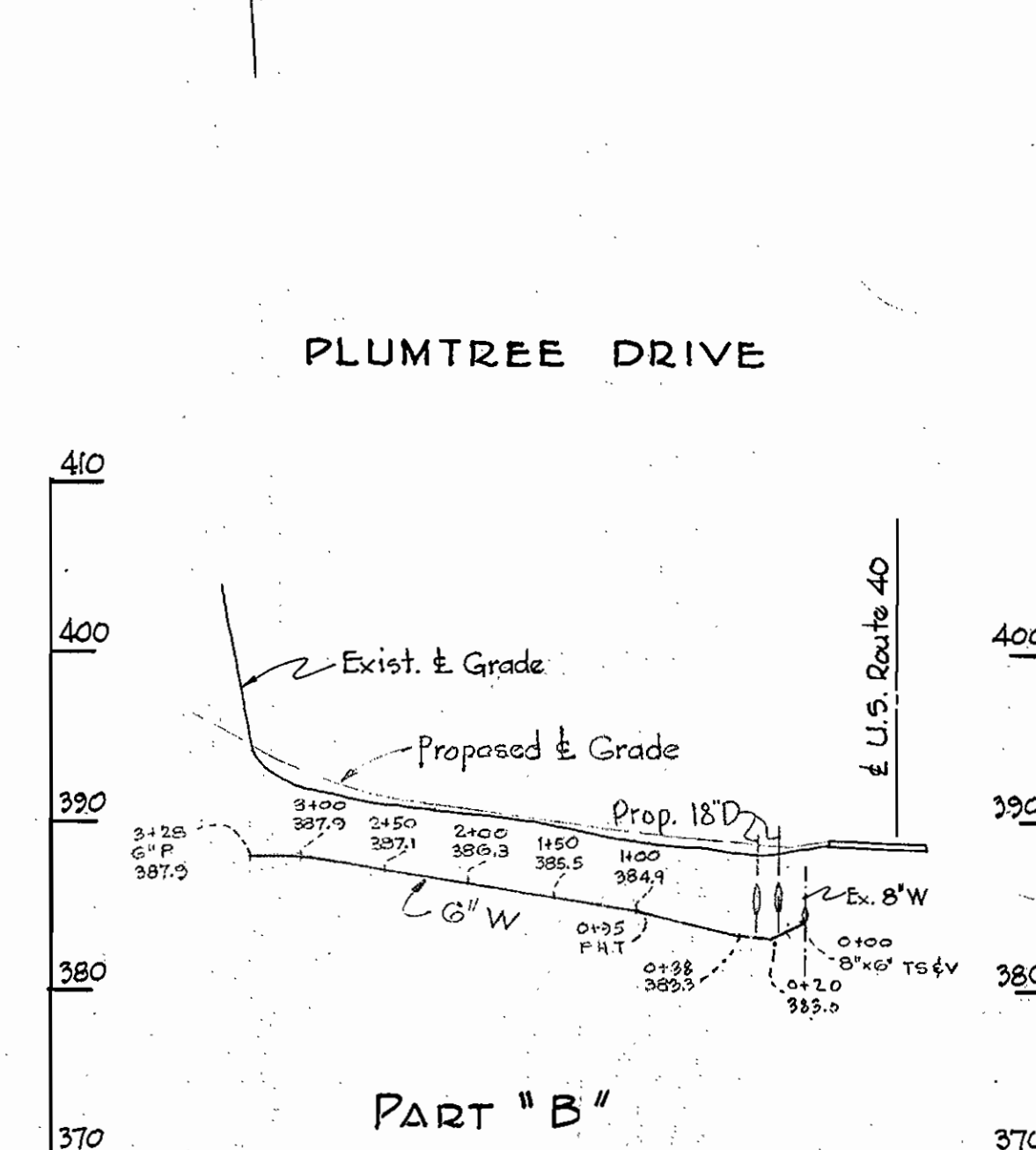
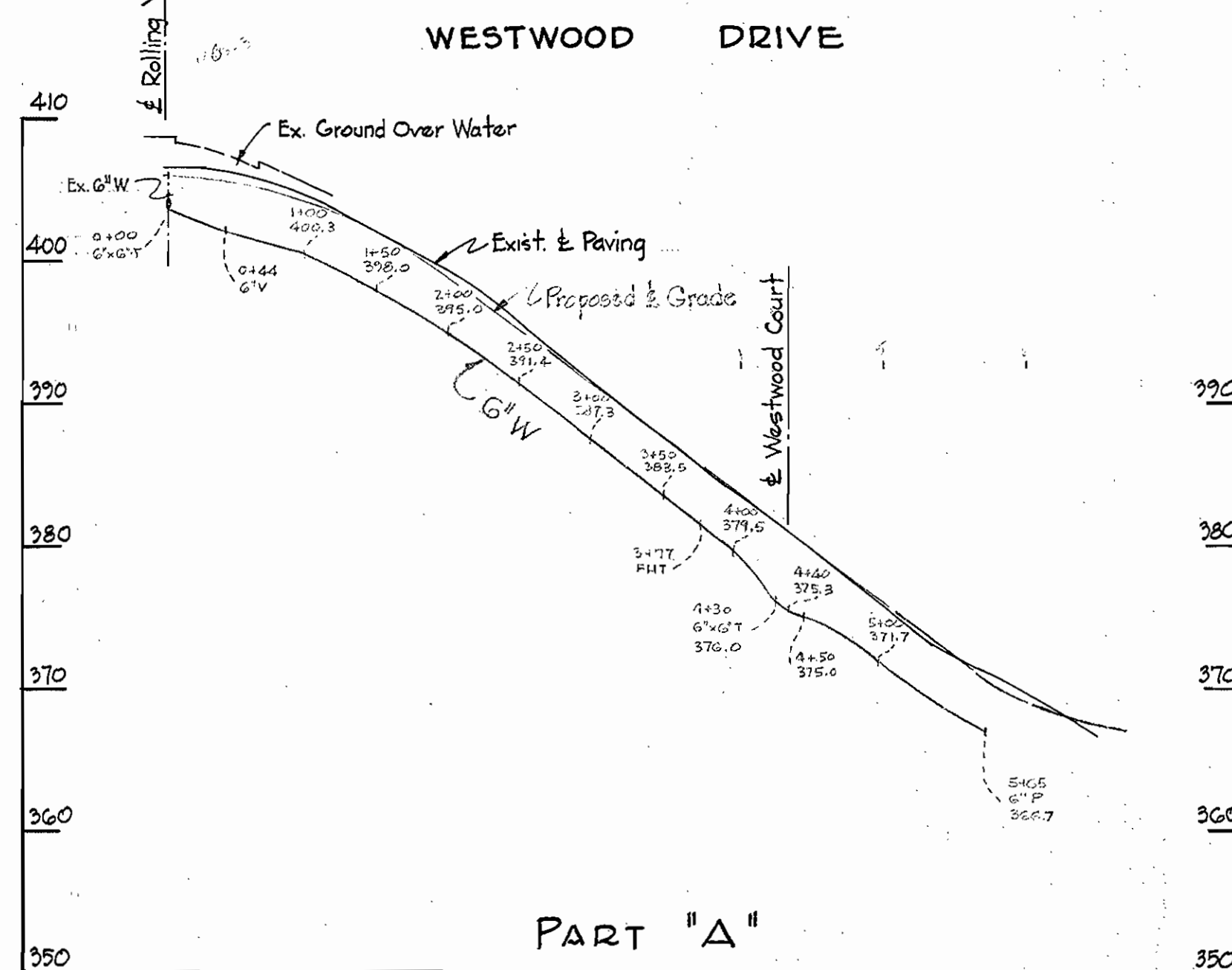
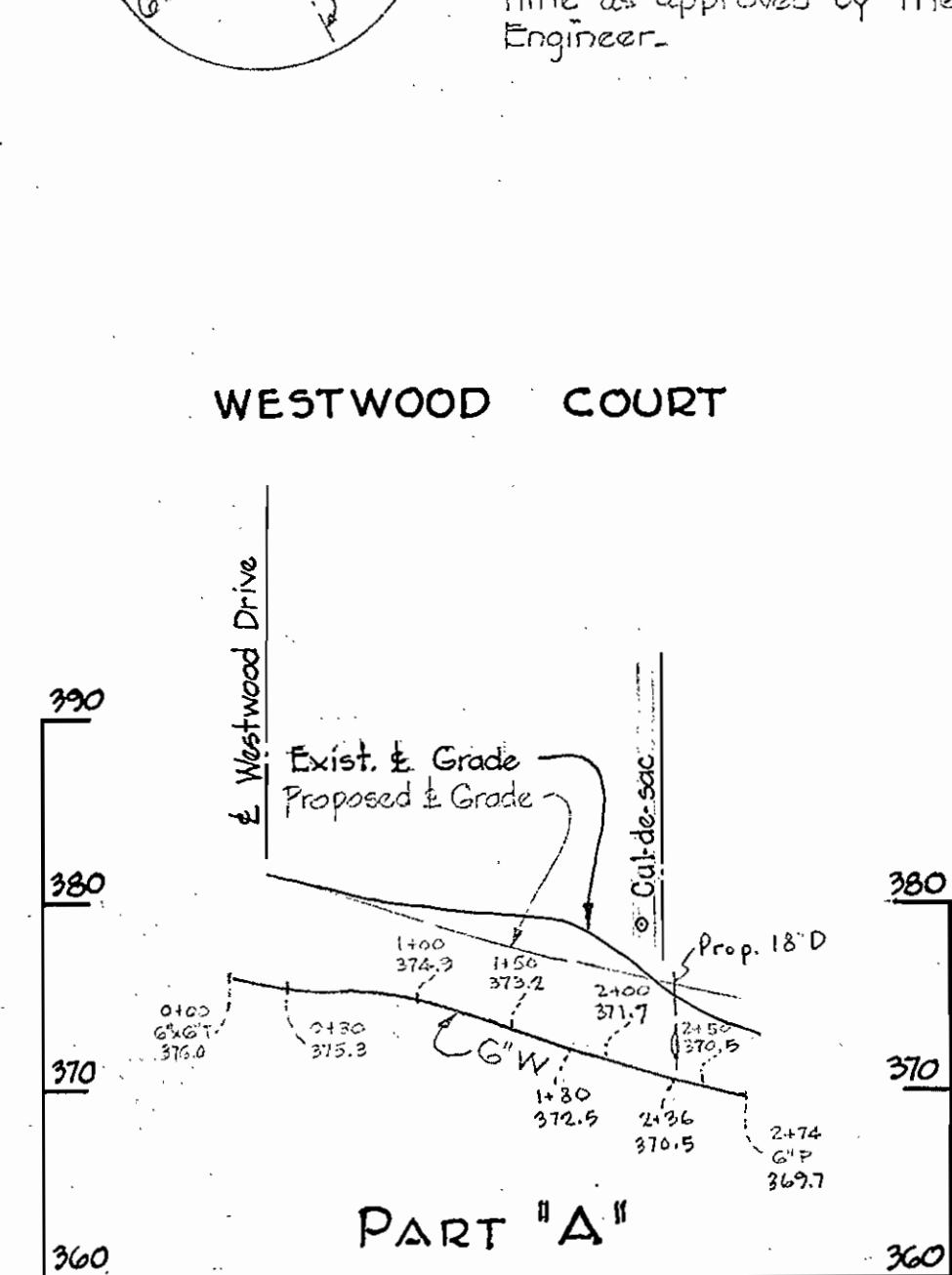
W.R.F.A. BM# 51-L-1 Elev. 324.42
 R.R. spike in base of T & E pole # 68480
 1/2 E. corner int. Route 40 & Dogwood Rd.

W.R.F.A. BM# 51-F-3 Elev. 389.62
 R.R. spike base G & E pole # 14721G, N.
 side Route 40, 800' W. of Chatham Rd.
 between Wilflax Motors & Ramsburg Supply Co. B.M.# 51-F-3



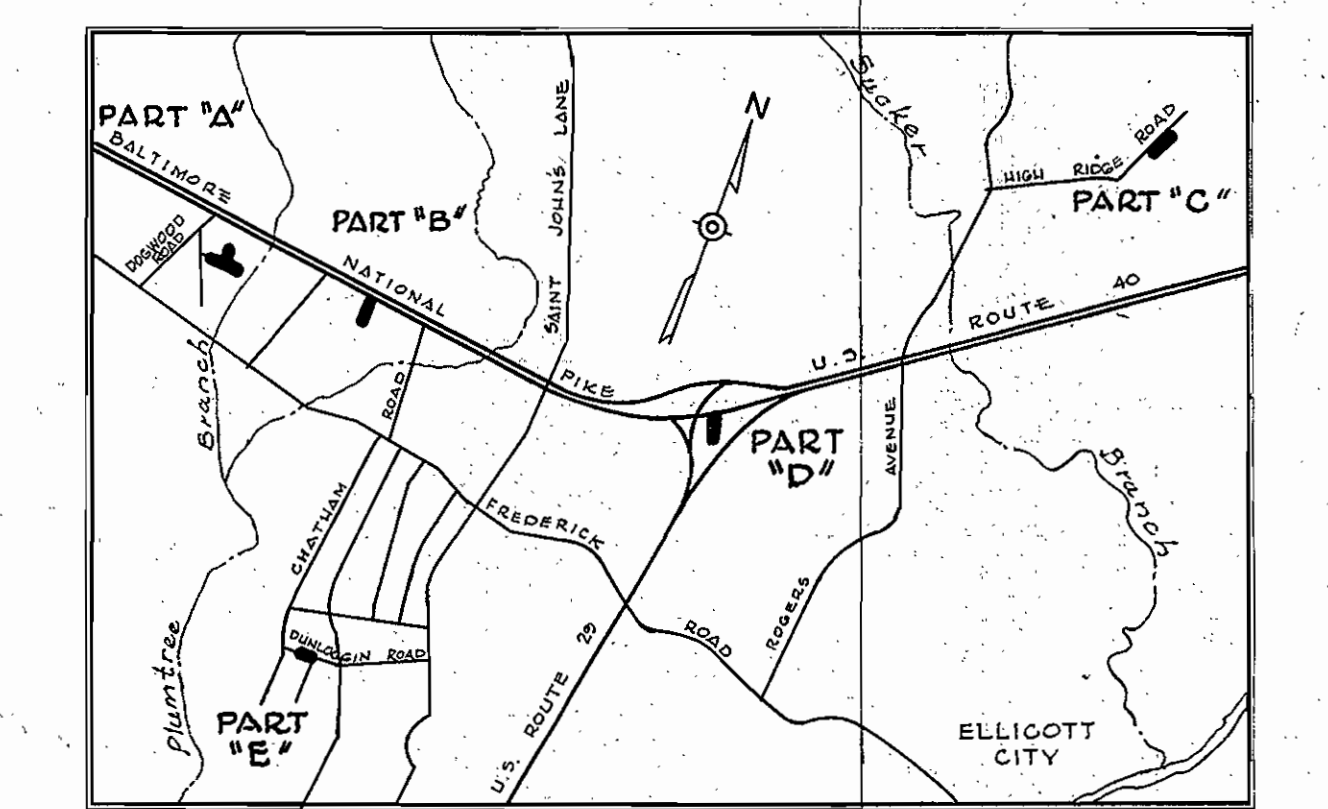
GENERAL NOTES

1. Approximate location of existing mains are shown. The Contractor shall take all necessary precautions to protect the existing mains and services and maintain uninterrupted supply. Any damage incurred shall be repaired immediately.
2. All pipe elevations shown are invert elevations.
3. The Contractor shall locate existing utilities a minimum of two weeks in advance of construction operations in vicinity of utilities.
4. For all standard details see Standards bound in Specifications.
5. All 6" & 8" W to be C.I.P. Class 22 and to have a minimum of 3 1/2' cover.
6. Block all fittings with concrete see standard details bound in specifications.
7. Bury Line elevation on Fire Hydrants shall be set the same as edge of paving or as directed by the Engineer in the field.
8. All sewer mains to be C5PX or VCPX unless otherwise noted.



PROFILE

Scale: H: 1" = 100'
 V: 1" = 10'



WHITMAN, REQUARDT & ASSOCIATES
 ENGINEERS
 1304 ST. PAUL ST.
 BALTIMORE, MARYLAND

HOWARD COUNTY METROPOLITAN COMMISSION
 JUNE 19, 1961
 DATE

CONTRACT NO. 35-W&S

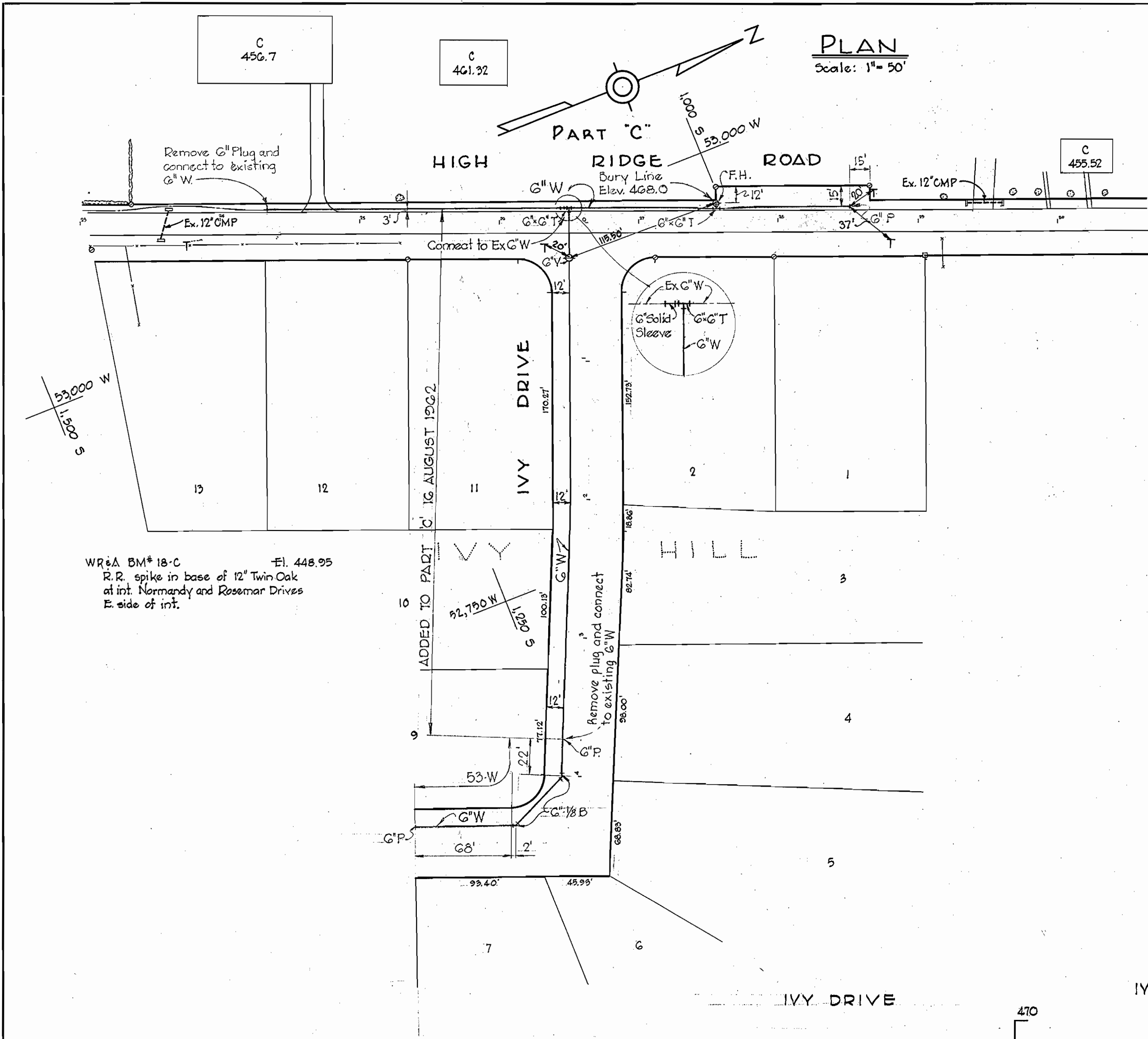
PLAN AND PROFILE OF
 WATER MAIN EXTENSIONS

ELLCOTT CITY SUB-DISTRICT

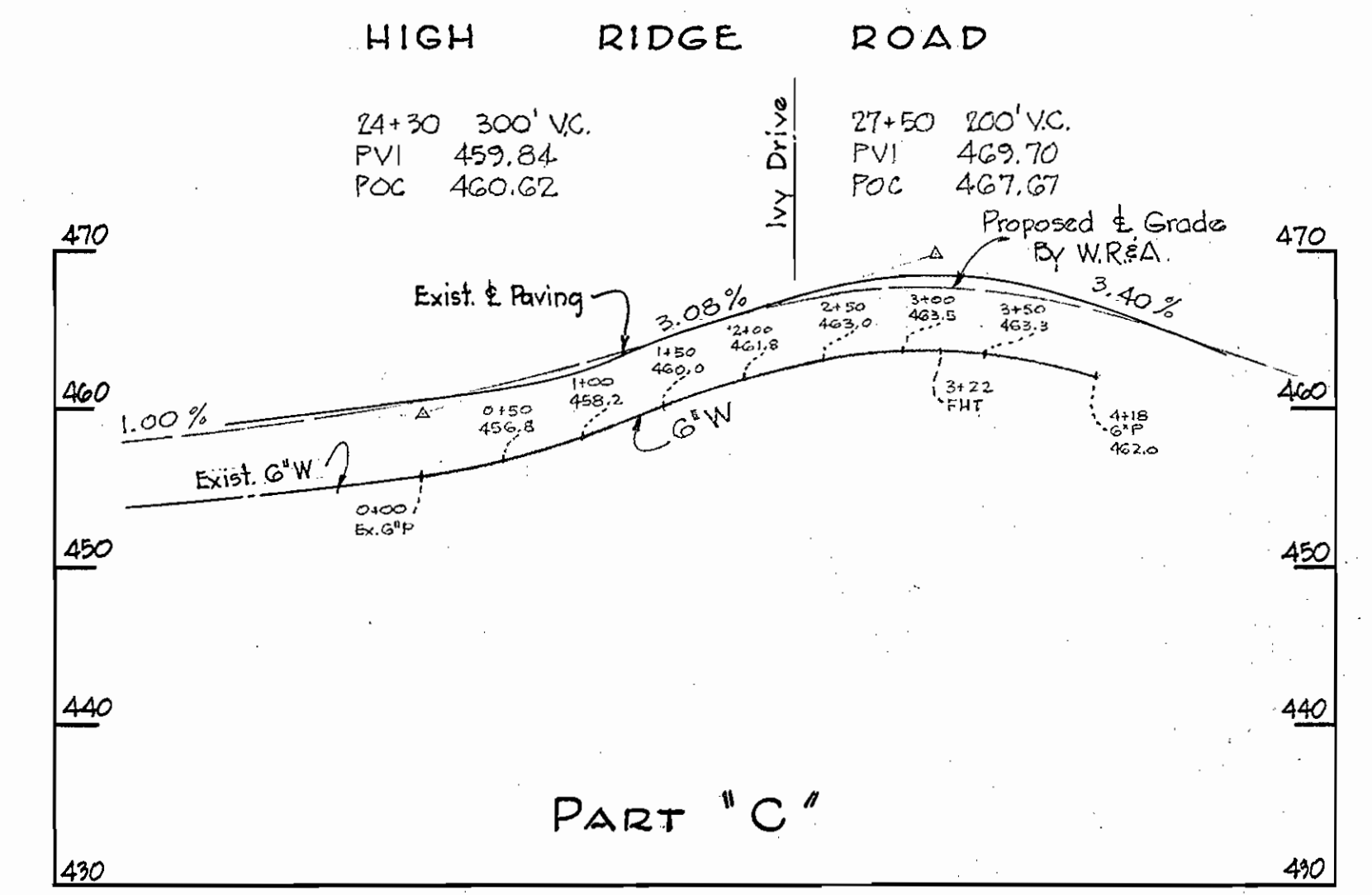
CONTRACT NO. 35-W&S
 DRAWING NO. 1 OF 3
 SCALE AS SHOWN

WS 35 W&S/1

WS 35 W&S/2

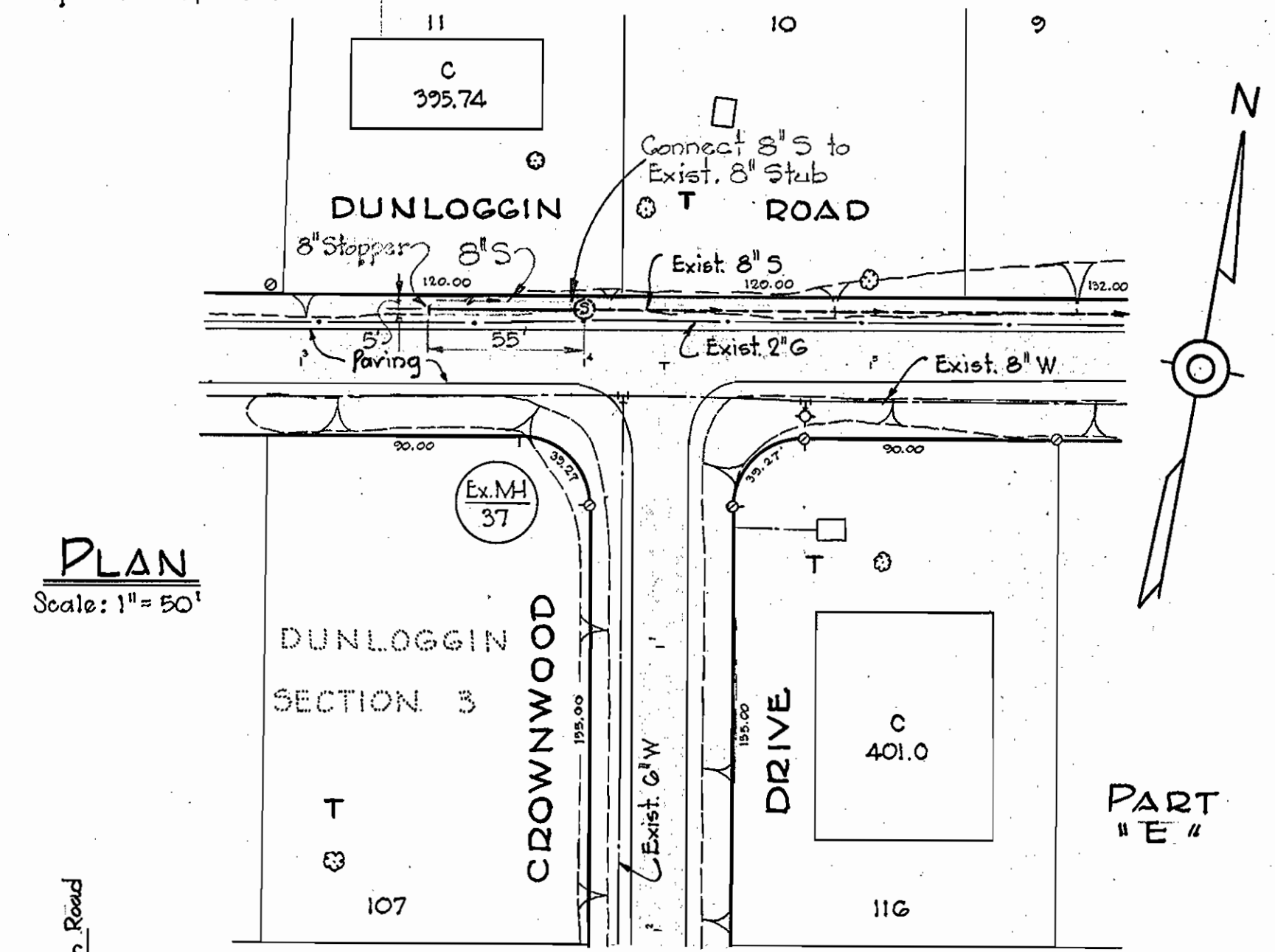


PLAN
Scale: 1" = 50'

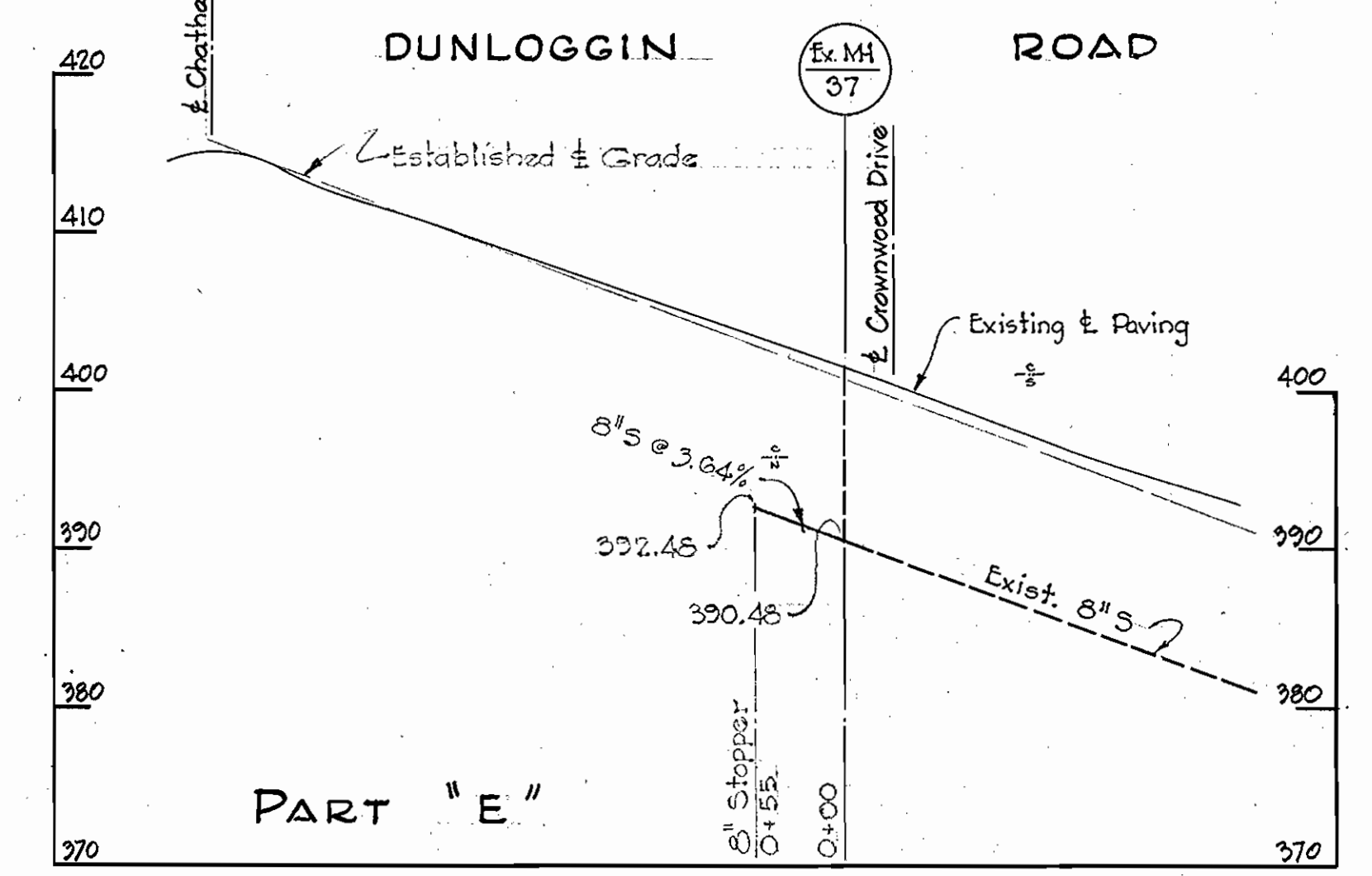


PROFILE
Scale: H: 1" = 100'
V: 1" = 10'

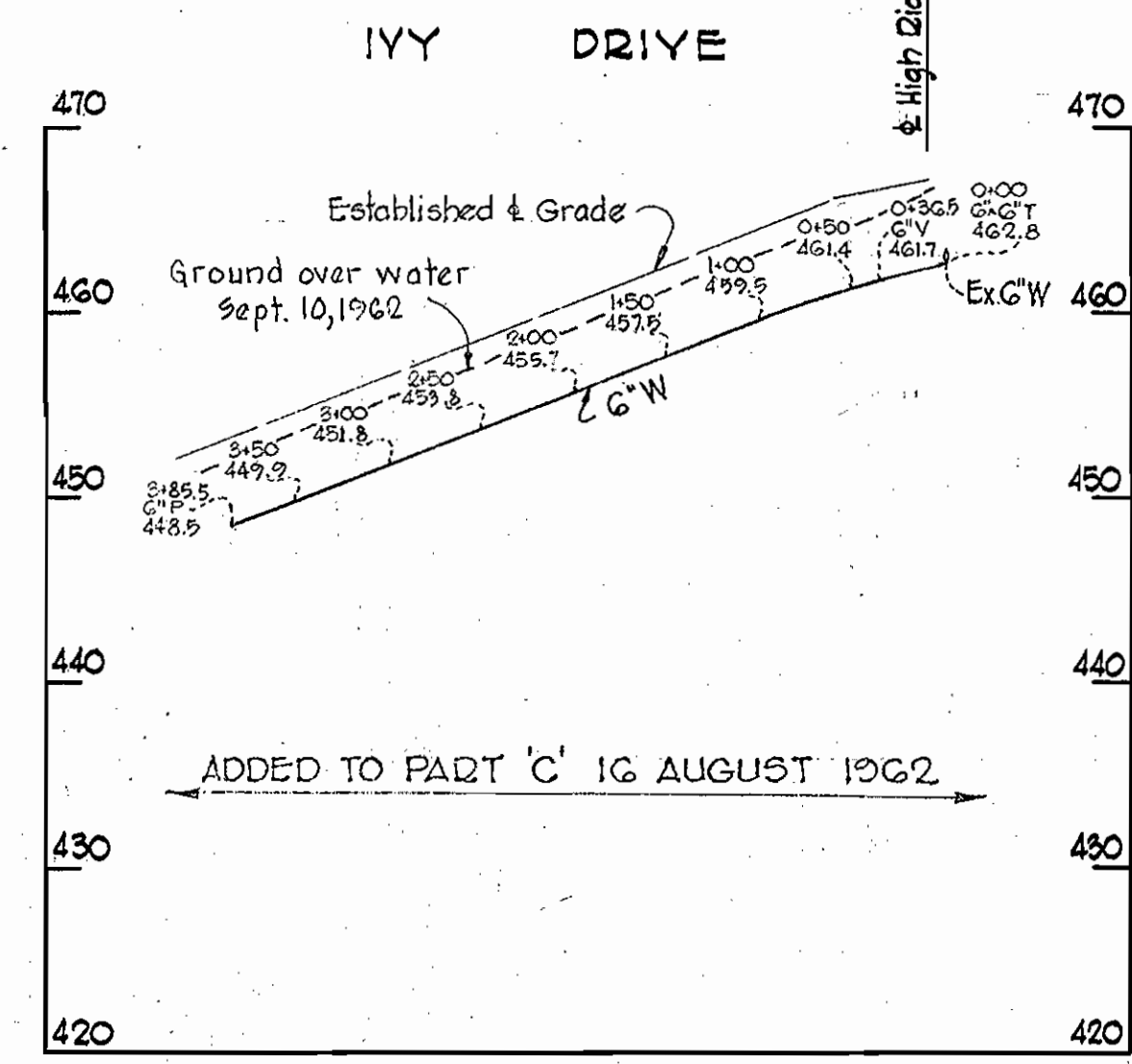
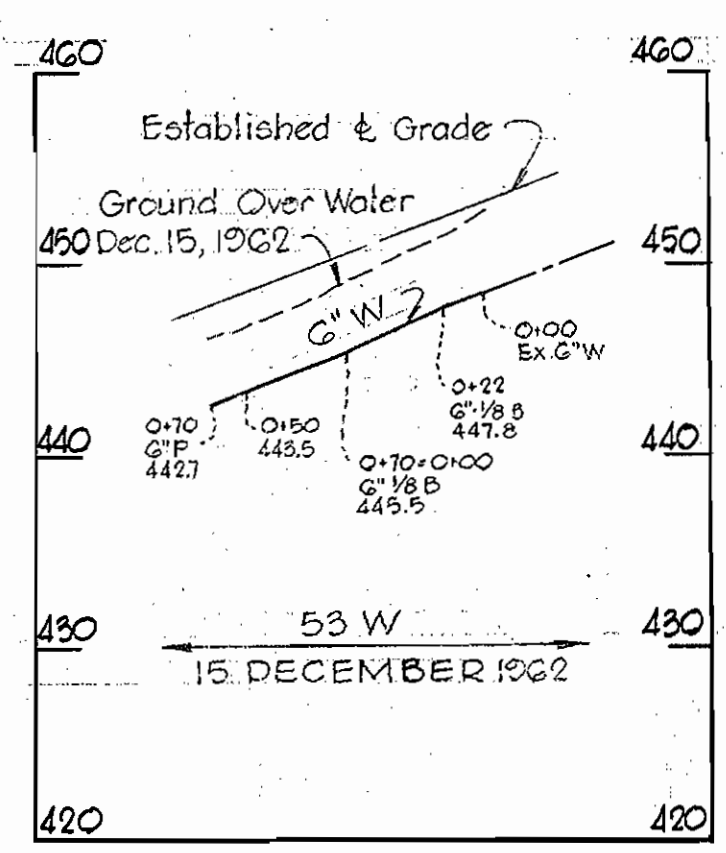
WR&A BM# 51-D El. 993.04
R.R. spike in root of 30" Oak N.E. cor. of Macalpine and Waycross Roads.



PLAN
Scale: 1" = 50'



PROFILE: H: 1" = 100'
V: 1" = 10'



WHITMAN, REQUARDT & ASSOCIATES
ENGINEERS
1304 ST. PAUL ST.
BALTIMORE, MARYLAND

HOWARD COUNTY METROPOLITAN COMMISSION
DATE: JUNE 12, 1961
Chief Engineer: *Carl W. Meyer*

CONTRACT NO. 53-W&S
35-W&S

PLAN AND PROFILE OF
WATER & SEWER EXTENSIONS

ELLCOTT CITY SUB-DISTRICT

CONTRACT NO. 35 W&S
DRAWING NO. 2 OF 3
SCALE AS SHOWN

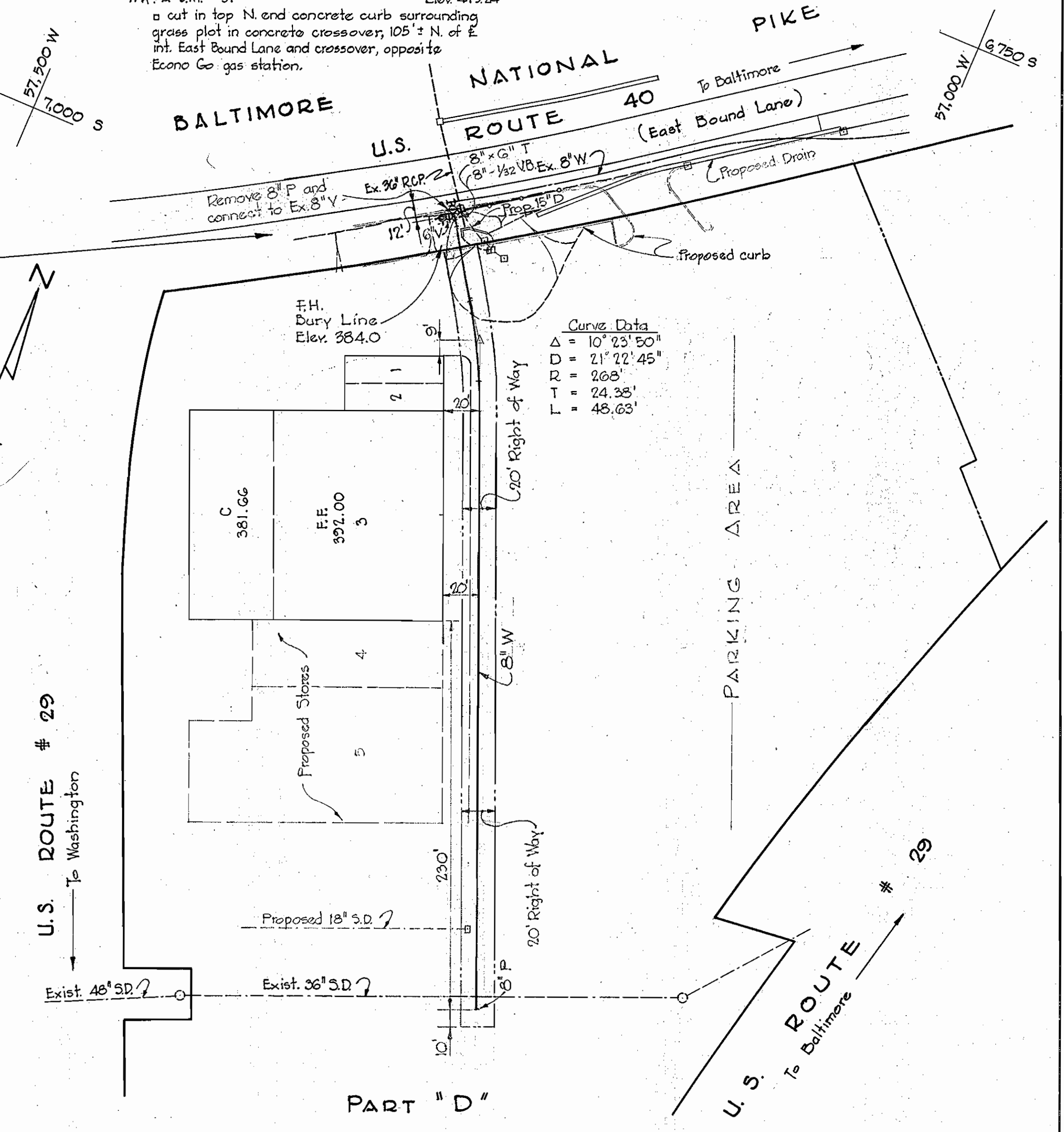
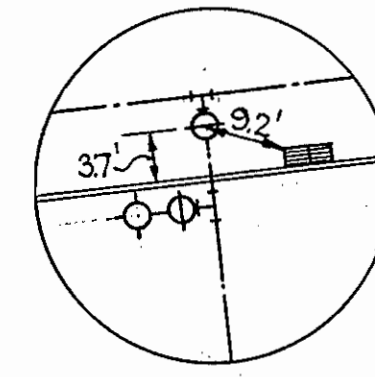
W. O. 4917-2

10 JAN. 63

AS BUILT 31 OCT 61 Part C
AS BUILT 29 OCT. 62 Part C Add.

WS 35 W&S/3

WR&A B.M. # 31 Elev. 41924
 a cut in top N. end concrete curb surrounding
 grass plot in concrete crossover, 105' ± N. of E.
 int. East Bound Lane and crossover, opposite
 Econo Gas station.

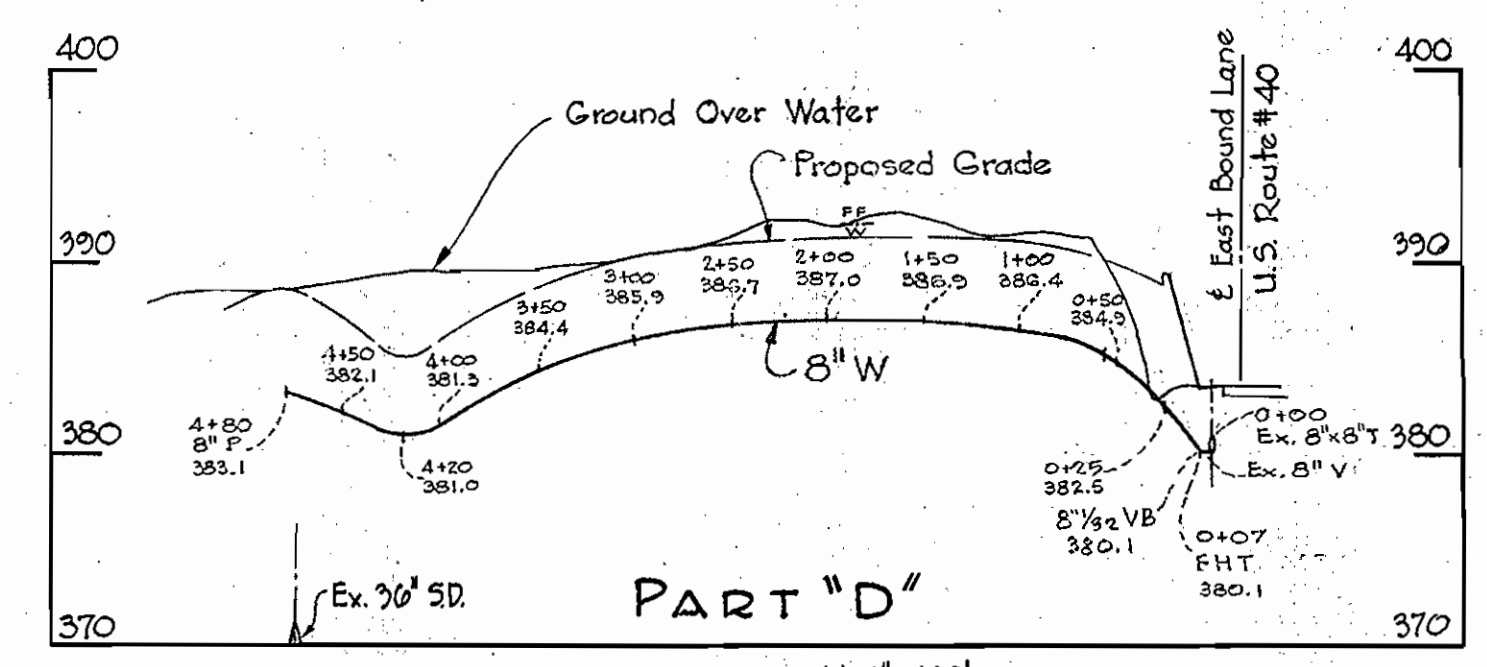


Curve Data
 $\Delta = 10^{\circ} 23' 50''$
 $D = 21^{\circ} 22' 45''$
 $R = 268'$
 $T = 24.38'$
 $L = 48.63'$

U.S. ROUTE # 29
 To Washington

U.S. ROUTE # 29
 To Baltimore

PART "D"
 PLAN
 Scale: 1" = 50'



PART "D"
 PROFILE
 H: 1" = 100'
 V: 1" = 10'

Revised June 28, 1961
 Contract No. 35-W#5

WHITMAN, REQUARDT & ASSOCIATES ENGINEERS 1304 ST. PAUL ST. BALTIMORE, MARYLAND	HOWARD COUNTY METROPOLITAN COMMISSION DATE: JUNE 19, 1961 Chief Engineer: <i>Carl W. Meyer</i>	CONTRACT NO. 35 W&S	PLAN AND PROFILE OF WATER MAIN EXTENSIONS	ELLICOTT CITY SUB-DISTRICT	DRAWING NO. 3 OF 3 SCALE AS SHOWN
---	--	---------------------	--	----------------------------	---

W. O. 4917-2

AS BUILT 31 OCT. 61

FD. 2551