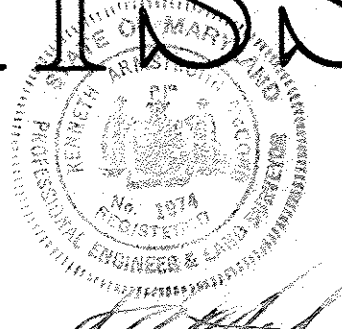


# CONTRACT 26-S

## HUDSON-TIBER BRANCH INTERCEPTOR HOWARD COUNTY METROPOLITAN COMMISSION ELLICOTT CITY SUB-DISTRICT



*James W. [Signature]* Contract No. 26-S

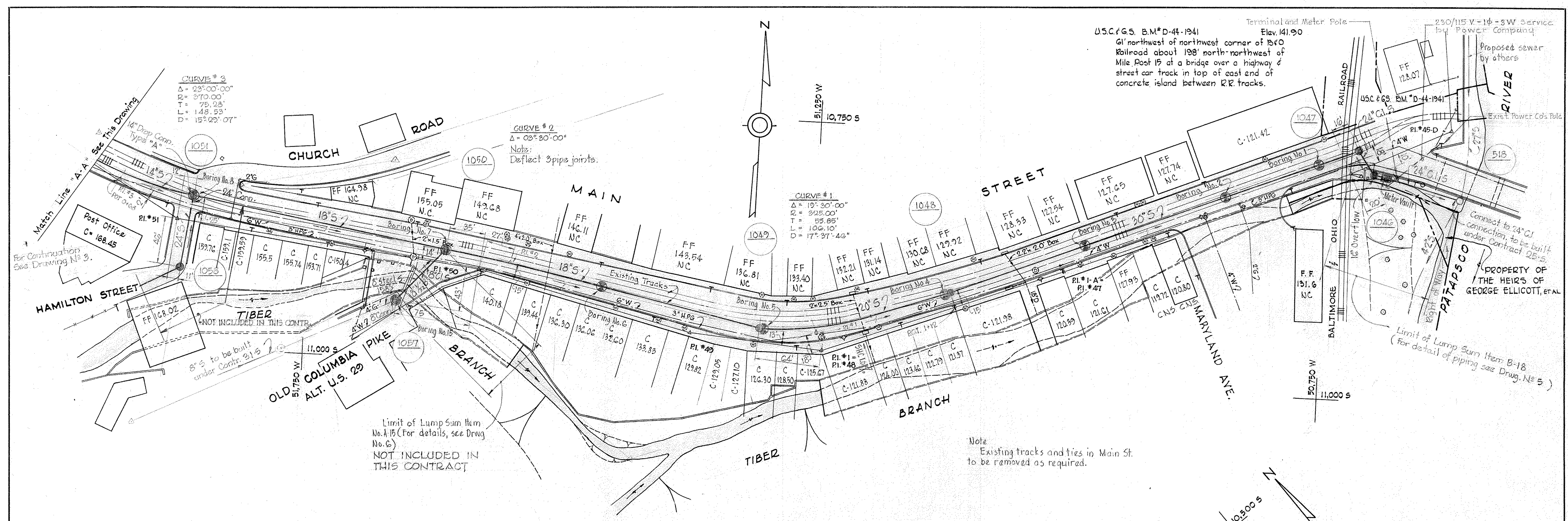
WHITMAN, REQUARDT & ASSOCIATES ENGINEERS 1304 ST. PAUL ST. BALTIMORE, MARYLAND	HOWARD COUNTY METROPOLITAN COMMISSION Feb 6, 1964 DATE <i>[Signature]</i> CHIEF ENGINEER	CONTRACT NO. 26-S	LOCATION MAP	ELLICOTT CITY SUB-DISTRICT	DRAWING NO. 1 OF 6	SCALE AS SHOWN
---	---	-------------------	--------------	----------------------------	--------------------	----------------

AS BUILT JAN. 25, 1966

WS 265/1

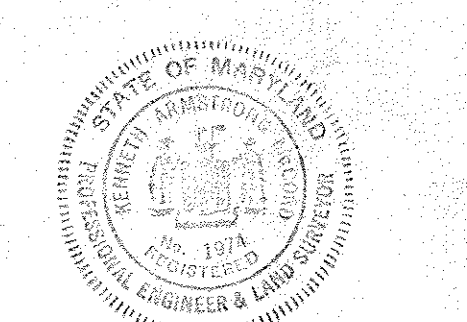
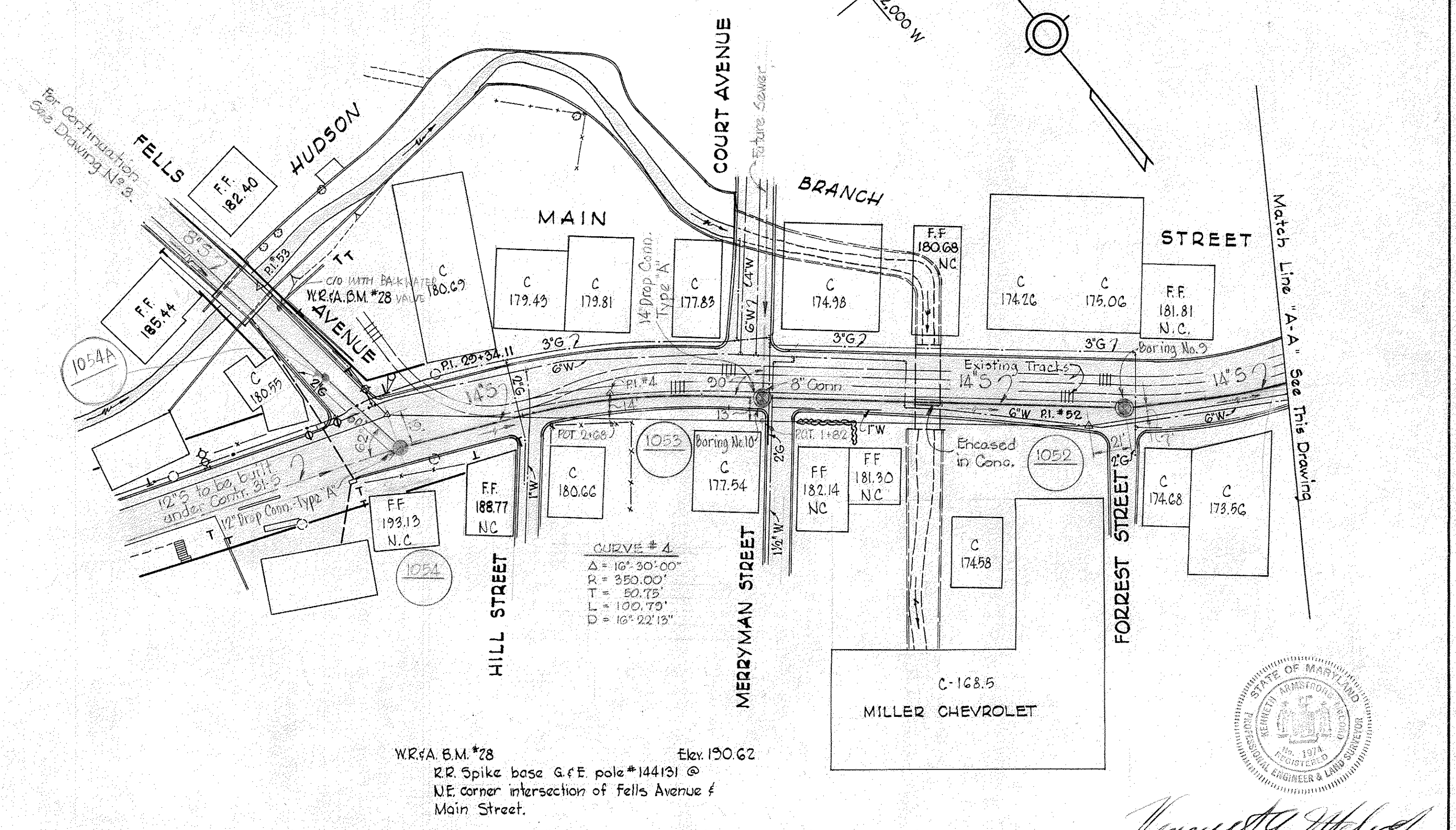


Revised 11/19/77-2 Suckers



**GENERAL NOTES**

1. Approximate location of existing mains are shown. The Contractor shall take all necessary precautions to protect the existing mains and services and maintain uninterrupted supply. Any damage incurred shall be repaired immediately.
2. All pipe elevations shown are invert.  $\odot$  elevations.
3. The Contractor shall locate existing utilities a minimum of two weeks in advance of construction operations in the vicinity of utilities.
4. For all standard details, see standards bound in the specifications.
5. All sewers shall be V.C.P.X., C.S.P.X. or Asbestos Cement Class 2400 unless otherwise noted.
6. Build all manholes to existing ground or paving unless otherwise noted.
7. Cost of grouted riprap to be included in the unit price bid for furnishing and laying of sewer mains.
8. Clear all poles by 2.0' minimum or tunnel as required. Clear all existing utilities by 6' minimum.
9. All cast iron sewers shall be 8" Class 22, 16" Class 23, 18" Class 23 and 24" Class 24



*James H. H. H.*  
 Contract No. 26-S

WHITMAN, REQUARDT & ASSOCIATES ENGINEERS 1304 ST. PAUL ST. BALTIMORE, MARYLAND	HOWARD COUNTY METROPOLITAN COMMISSION Feb 6, 1964 DATE <i>Carl W. Meyer</i> CHIEF ENGINEER	CONTRACT NO. 26-S	PLAN	ELLICOTT CITY SUB-DISTRICT	DRAWING NO. 2 OF 6 SCALE 1"=50' 11 SW 34, 35 12 SW 35
---	--	-------------------	------	----------------------------	---

W. O. 4917-2

AS BUILT JAN. 25, 1966

WS 26S/2

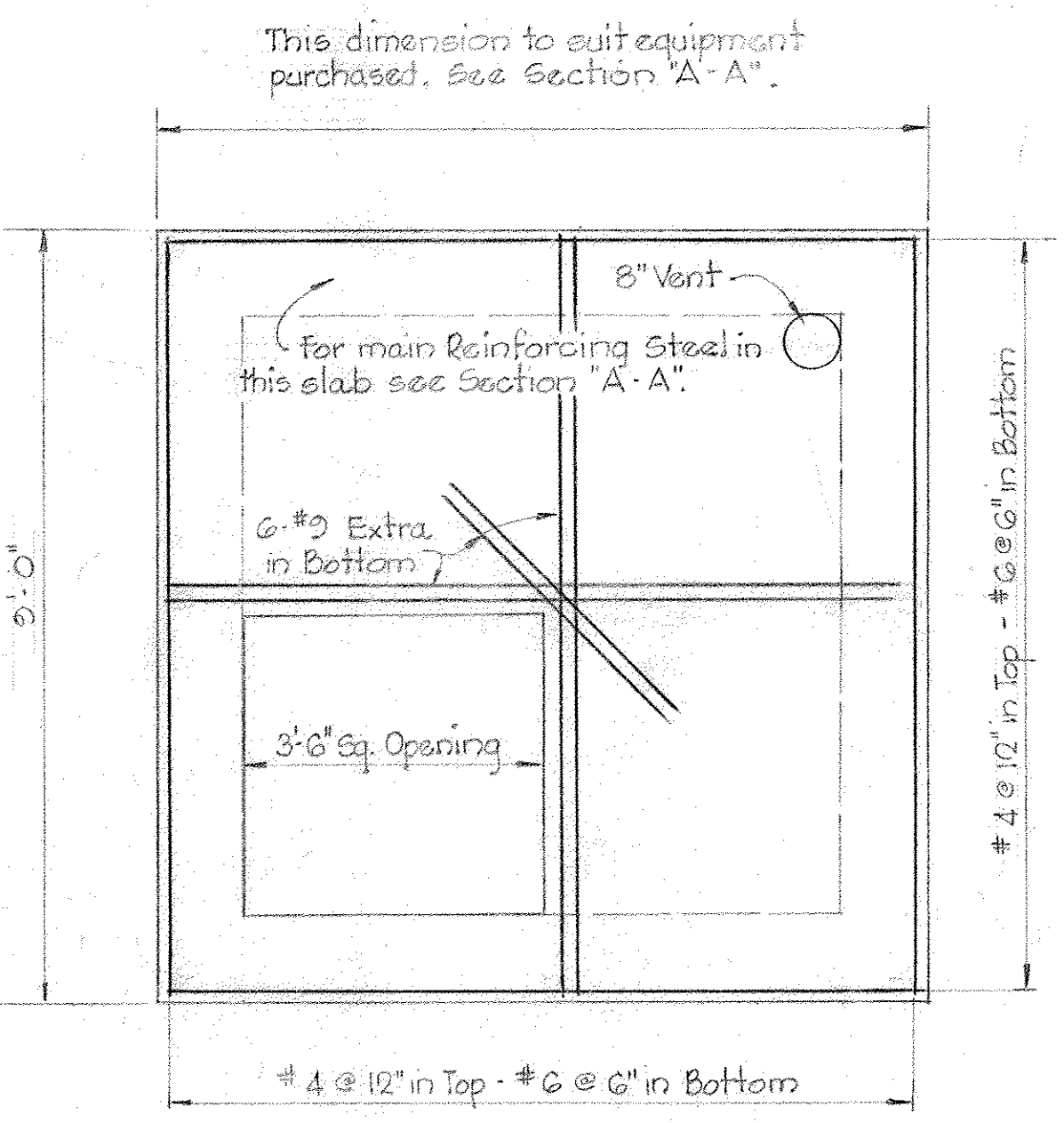
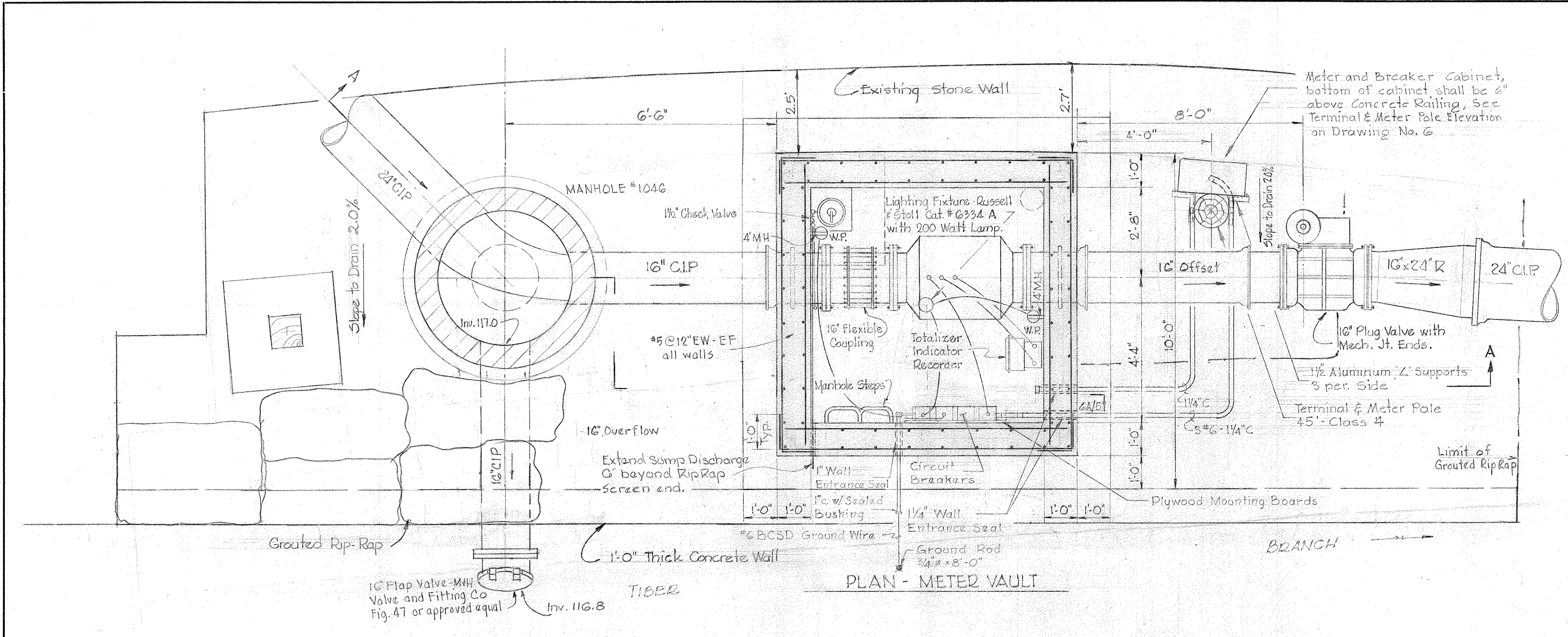






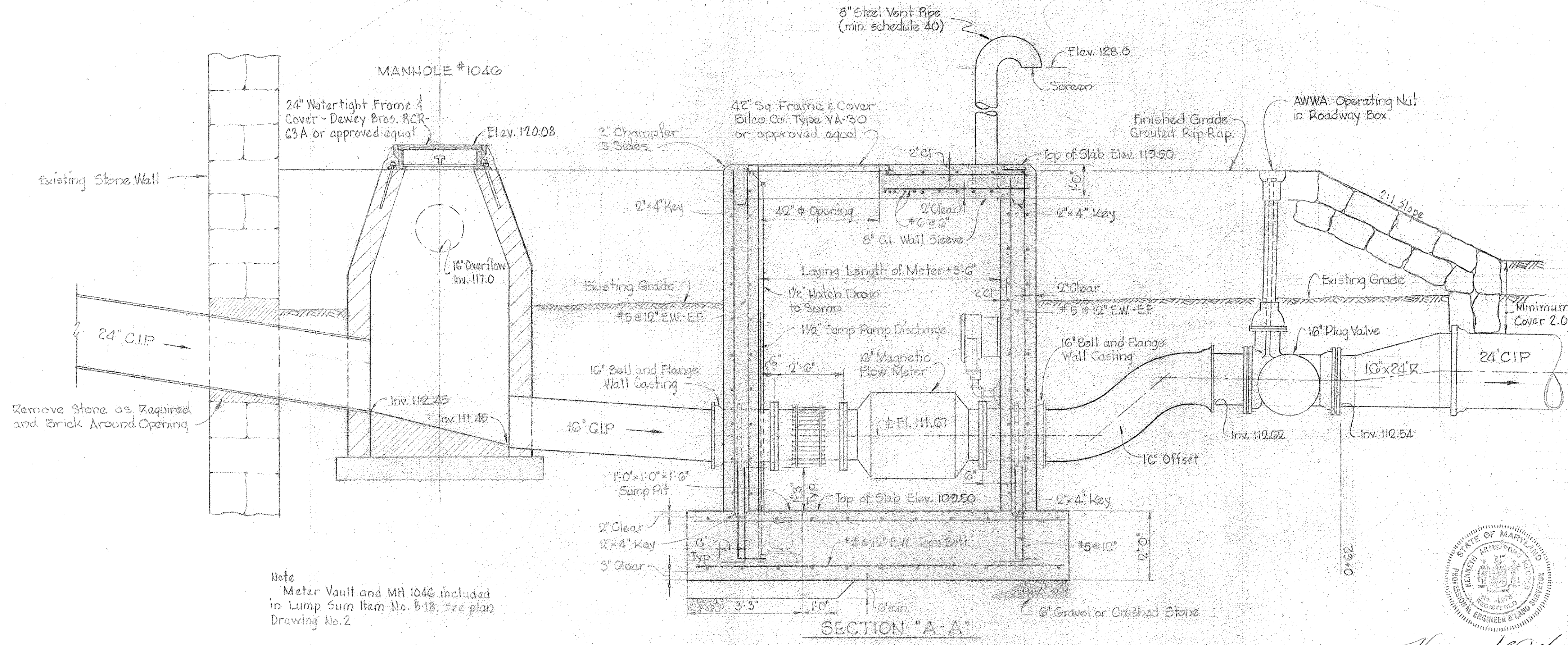






PLAN - METER VAULT

PLAN - TOP SLAB



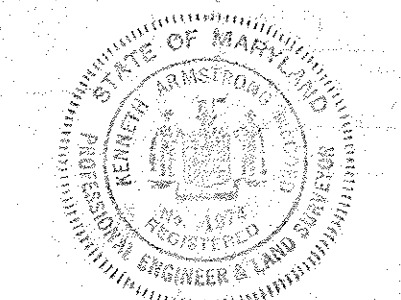
SECTION 'A-A' DETAILS OF METER VAULT

STRUCTURAL NOTES

- All excavations shall be inspected by the Engineer before placing any gravel or concrete.
- All concrete shall be Class 'A' and shall contain an air entraining admixture, 'Darex' or an approved equal. The amount of air entrained shall be 4.5% ± 1.5% by volume.
- All concrete poured at temperatures above 50°F shall contain a retarding admixture, 'Plastiment' or an approved equal, to a proper amount resulting in a retardation of 2 to 3 hours.
- All concrete poured in temperatures below 50°F shall contain a densifying admixture 'Sikacrete' or approved equal at the rate of 1/2 gallons per cubic yard of concrete.

PAINTING

- All items of mechanical equipment, vent pipe & access door shall be painted as follows:
  - One shop prime coat of Inertol Rust Inhibitive Primer No. G21, or one field prime coat of Inertol Rust Penetrating Primer No. G22 or approved equal.
  - Two finish coats of Inertol Glamortax enamel No. 303 or an approved equal.
- Outside of meter vault to be waterproofed with 3 coats of Inertol Standard or an approved equal.



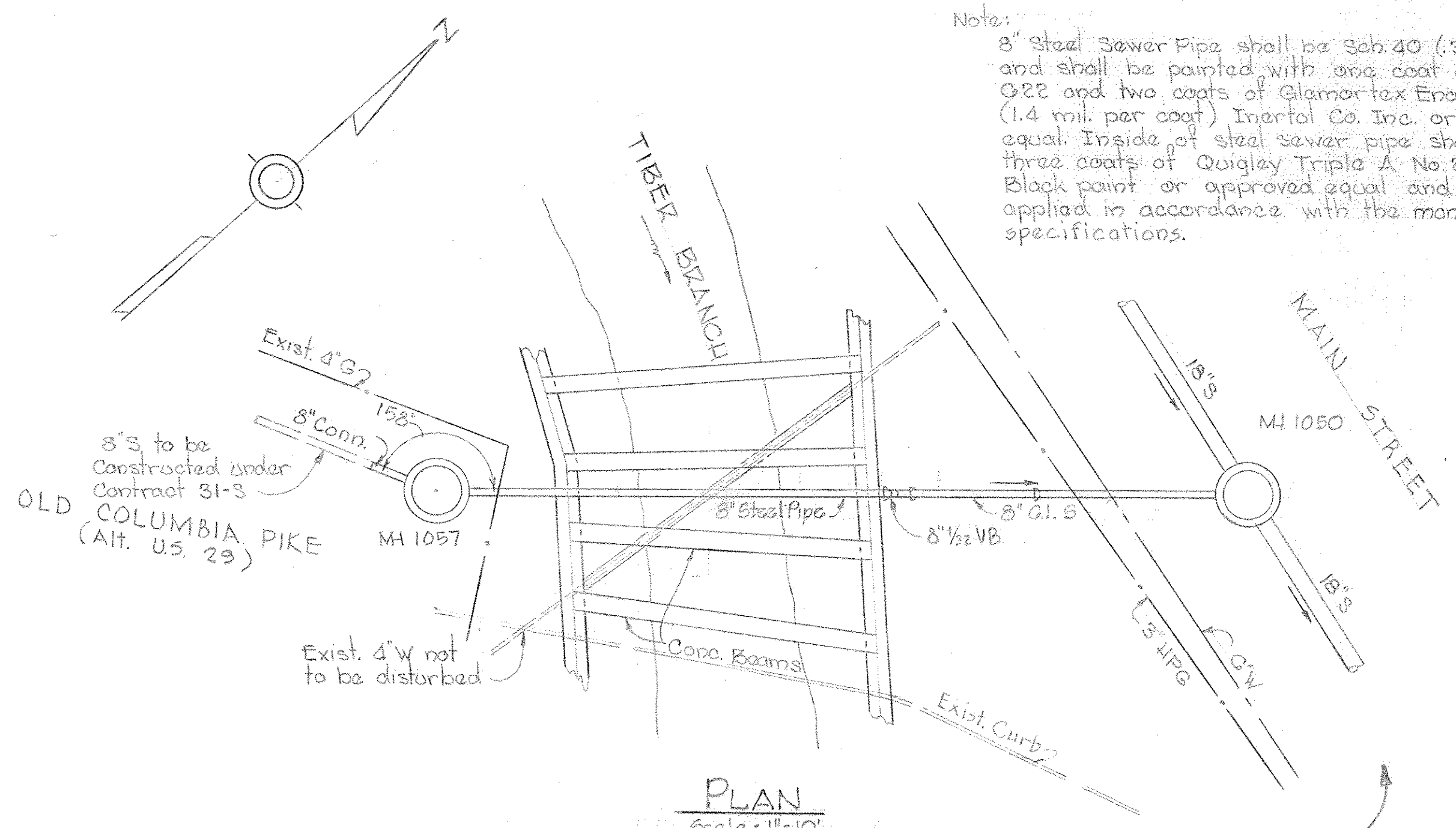
*Handwritten signature of the engineer.*

WS 26 S/5

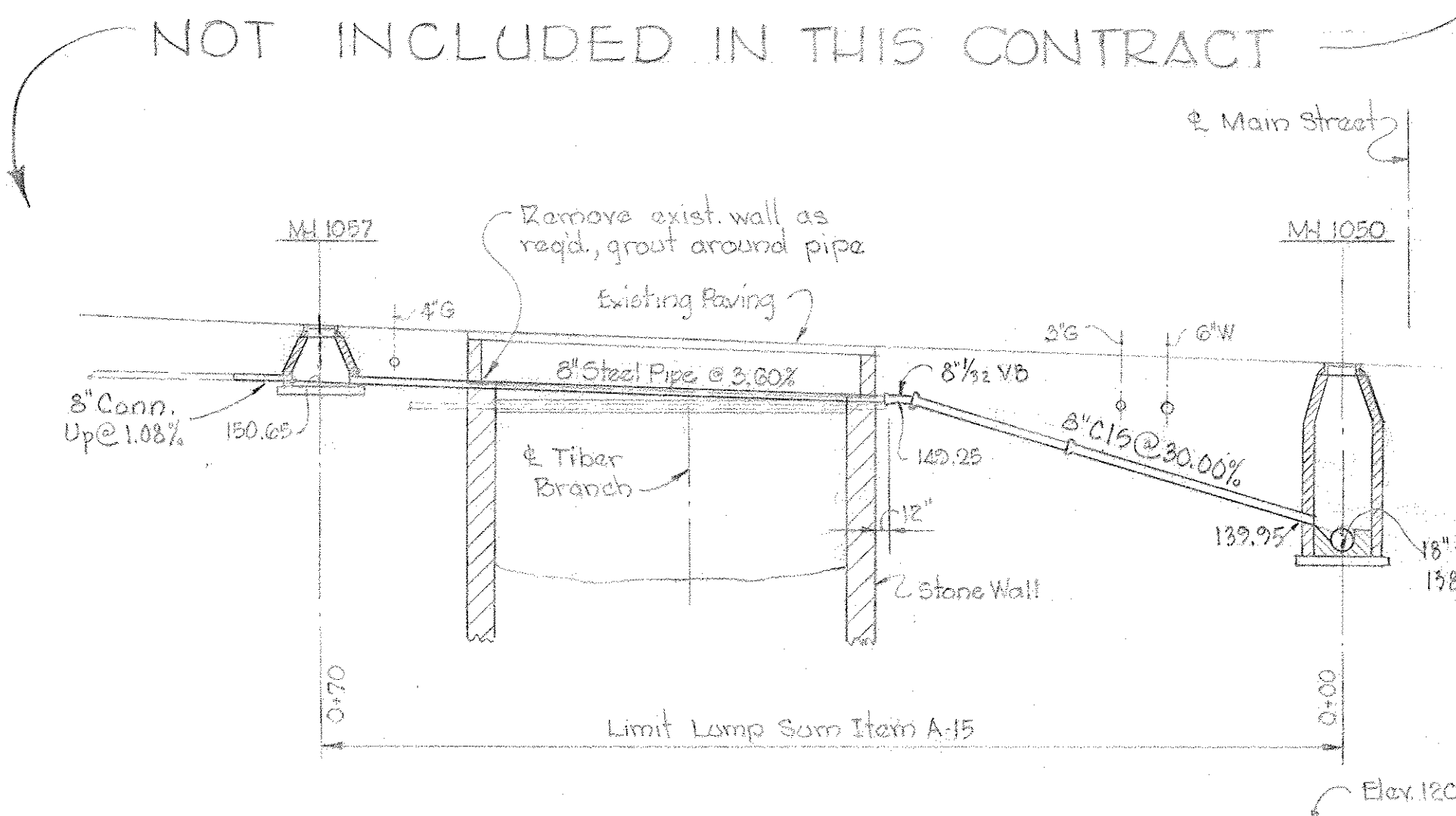
WHITMAN, REQUARDT & ASSOCIATES ENGINEERS 1304 ST. PAUL ST. BALTIMORE, MARYLAND	HOWARD COUNTY METROPOLITAN COMMISSION Feb 6, 1964 DATE <i>Carl W. Reager</i> CHIEF ENGINEER	CONTRACT NO. 26-S	DETAILS OF METER VAULT	ELLCOTT CITY SUB-DISTRICT	DRAWING NO. 5 OF 6	SCALE AS SHOWN
---	---	-------------------	------------------------	---------------------------	--------------------	----------------



Note:  
 8" Steel Sewer Pipe shall be Sch. 40 (.322" thickness) and shall be painted with one coat of Primer Q22 and two coats of Glomertex Enamel 300 (1.4 mil. per coat) Inertol Co. Inc. or approved equal. Inside of steel sewer pipe shall be given three coats of Quigley Triple A No. 20 Heavy Duty Black paint or approved equal and shall be applied in accordance with the manufacturers specifications.

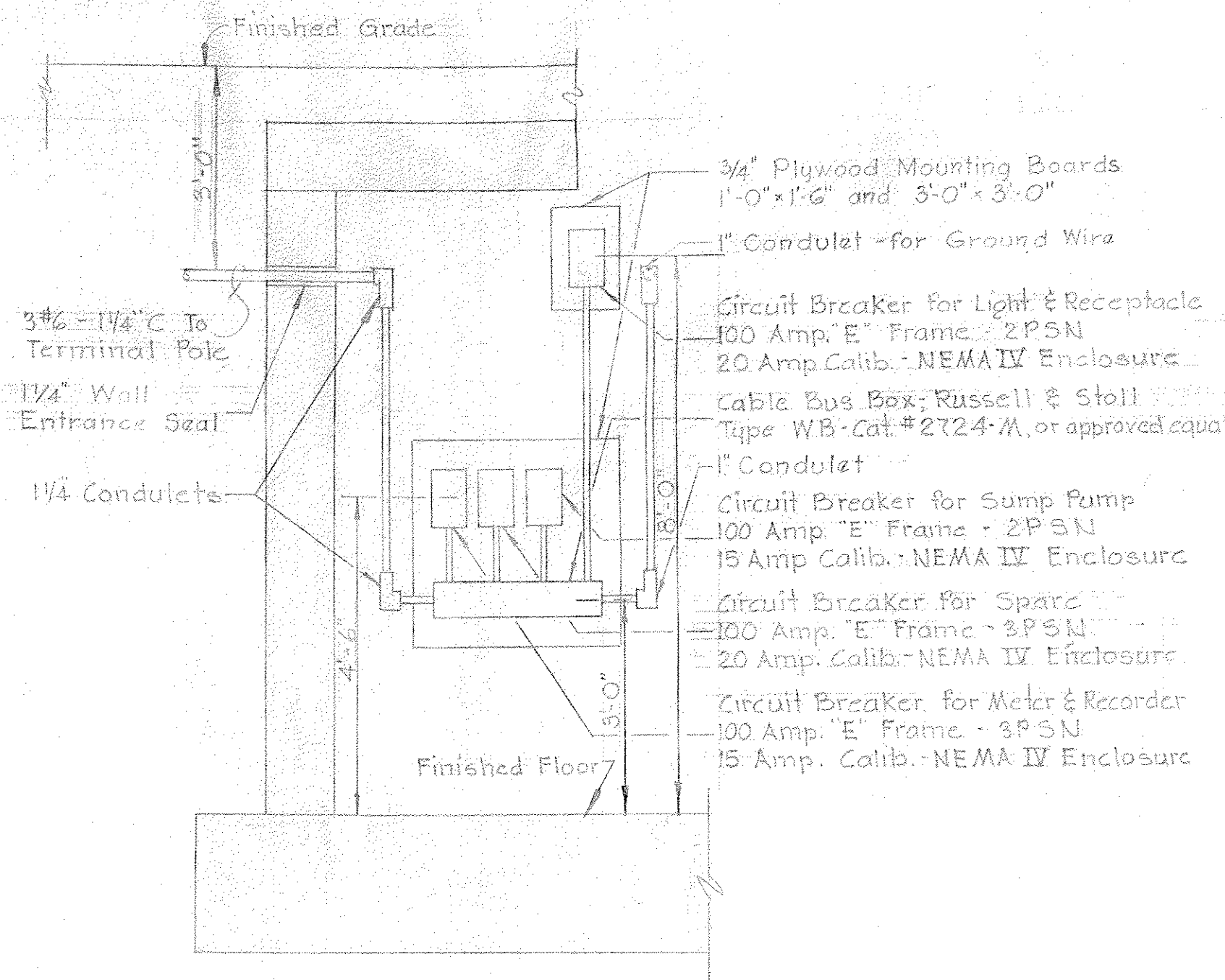


PLAN  
 Scale: 1"=10'

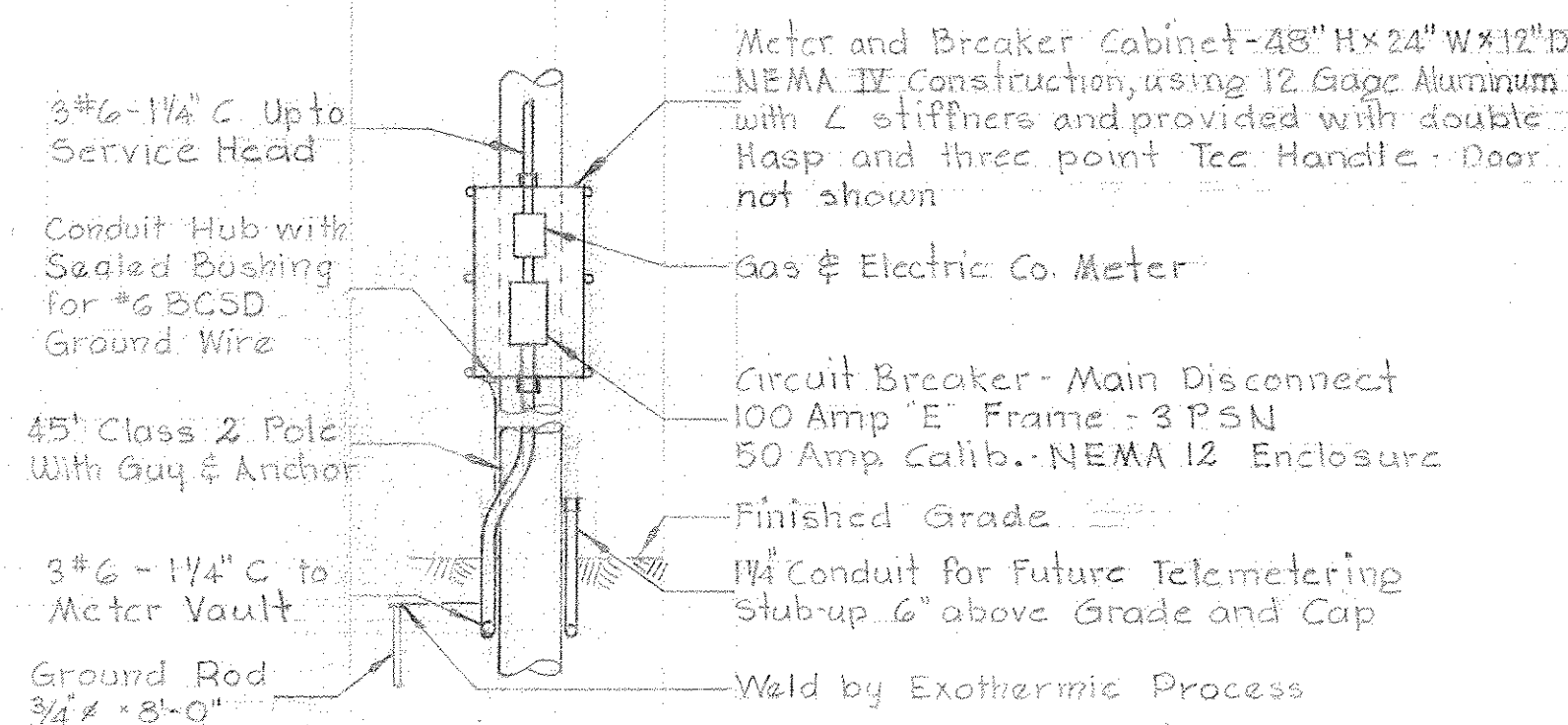


PROFILE  
 Scale: 1"=10' Horiz. & Vert.

DETAIL OF TIBER BRANCH CROSSING  
 Scale: As Shown



SECTION GA/5  
 Scale: 1/2"=1'-0"



ELEVATION-TERMINAL & METER POLE  
 No Scale

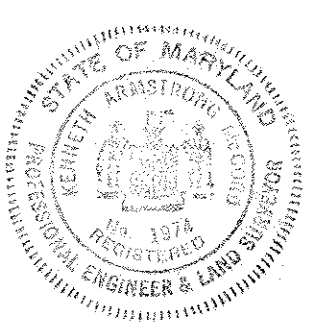
ELECTRICAL LEGEND

- Outlet - Incandescent - Ceiling
- ⊕ Outlet - Weatherproof Convenience
- Conduit - In or under Floor
- Conduit - On Ceiling or Wall
- Conduit - Underground - Size as Indicated
- Pole - Length and Class as Indicated
- ⊕ Pole - with Down Guy and Anchor - Length, Class & Lead 3/4" x 8'-0"

ELECTRICAL NOTES

1. For Outside Electrical Work, See Dwg. #2
2. For Electrical Plan of Meter Vault, See Dwg. #5
3. All Conduit shall be 3/4" unless otherwise noted

ELECTRICAL DETAILS



*Howard W. Meyer*  
 CHIEF ENGINEER

Contract No 26-S

WHITMAN, REQUARDT & ASSOCIATES ENGINEERS 1304 ST. PAUL ST. BALTIMORE, MARYLAND	HOWARD COUNTY METROPOLITAN COMMISSION Feb 6, 1964 <i>Carl W. Meyer</i> CHIEF ENGINEER	CONTRACT NO. 26-S	DETAILS	ELLICOTT CITY SUB-DISTRICT	DRAWING NO. 6	SCALE AS SHOWN
					OF 6	

WS 26 S/6