

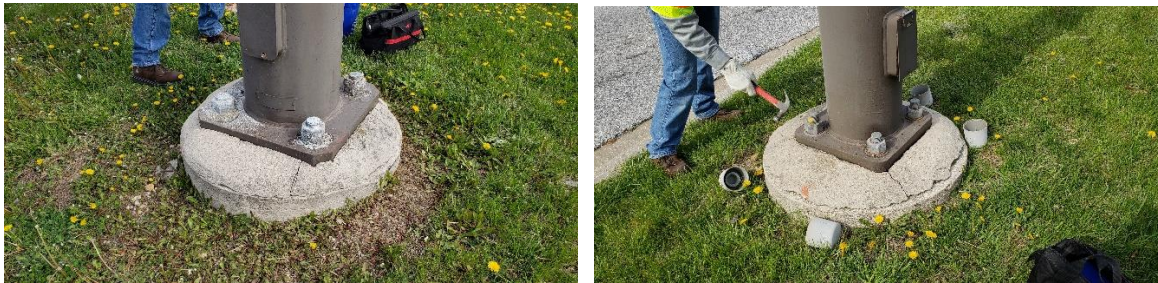
## Howard County Traffic Signal Inspection Summary Report:

**Signal Number:** 077  
**Location:** Columbia Gateway Drive at Eli Whitney  
**Inspection Date:** April 23, 2018

**Inspection Overall Score:** 16

### Significant Findings:

Poles are in overall good condition. Paint coating is in overall good condition.



### Maintenance Issues:

East and West Medians – both structures have loose tightening nuts.  
Damaged electrical service conduit.  
Hand holes are retaining water.  
NE Corner – ped push button sign is in poor condition.

