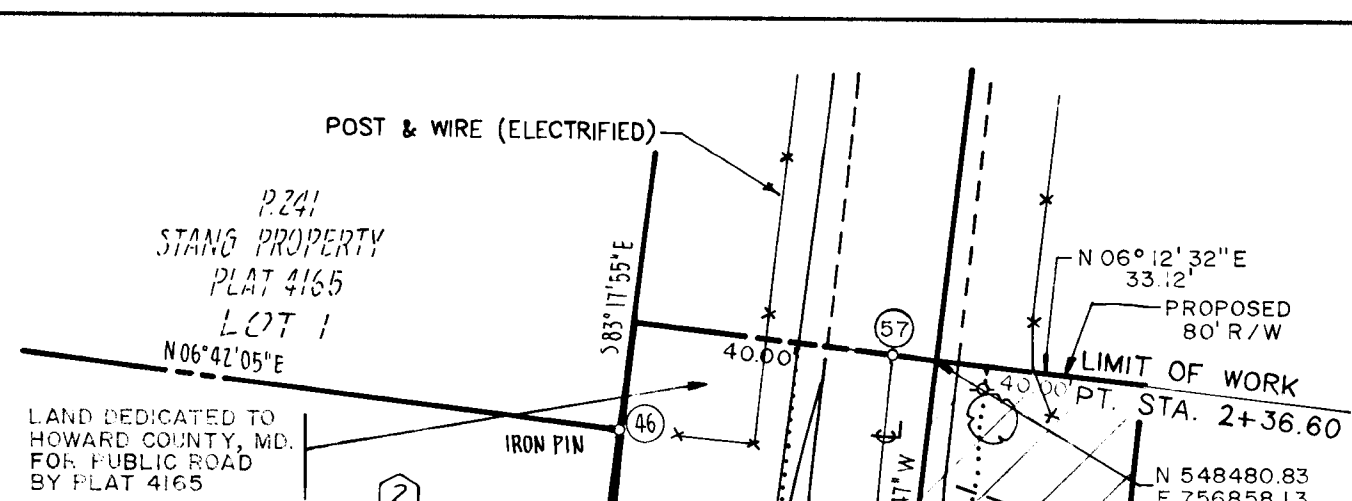


COORDINATES				
NO.	NORTH	EAST	NORTH	EAST
44	548144.10	756599.64	52	548646.80
45	548312.94	756662.67	53	548218.25
46	548530.13	756846.21	55	548473.67
47	548630.54	756513.54	57	548484.96
				756620.73
				756697.22
				756858.87

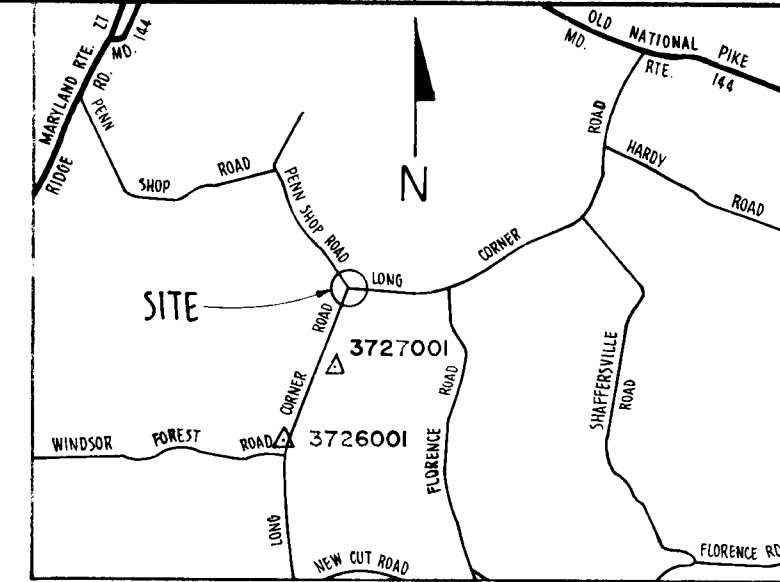
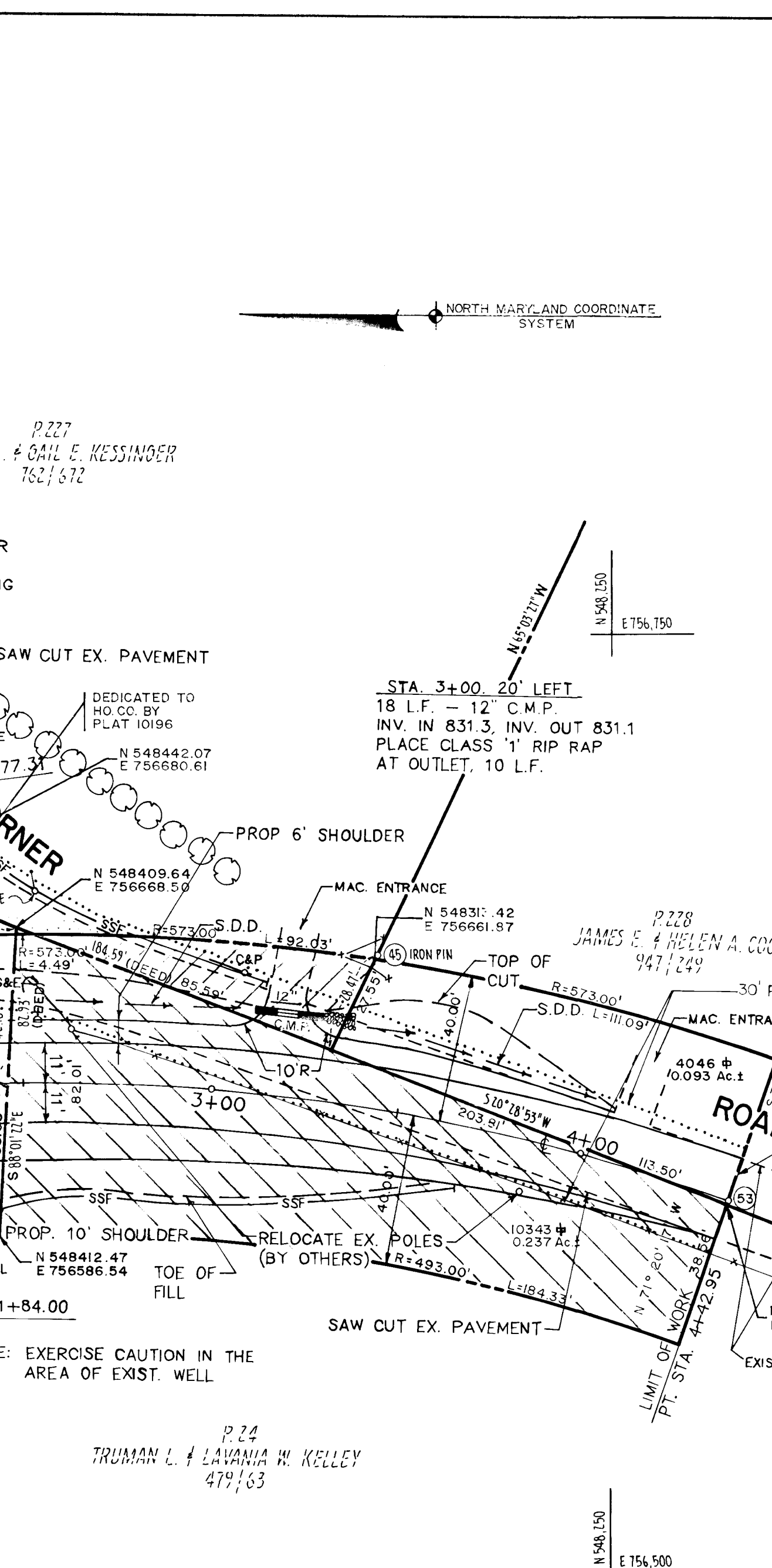
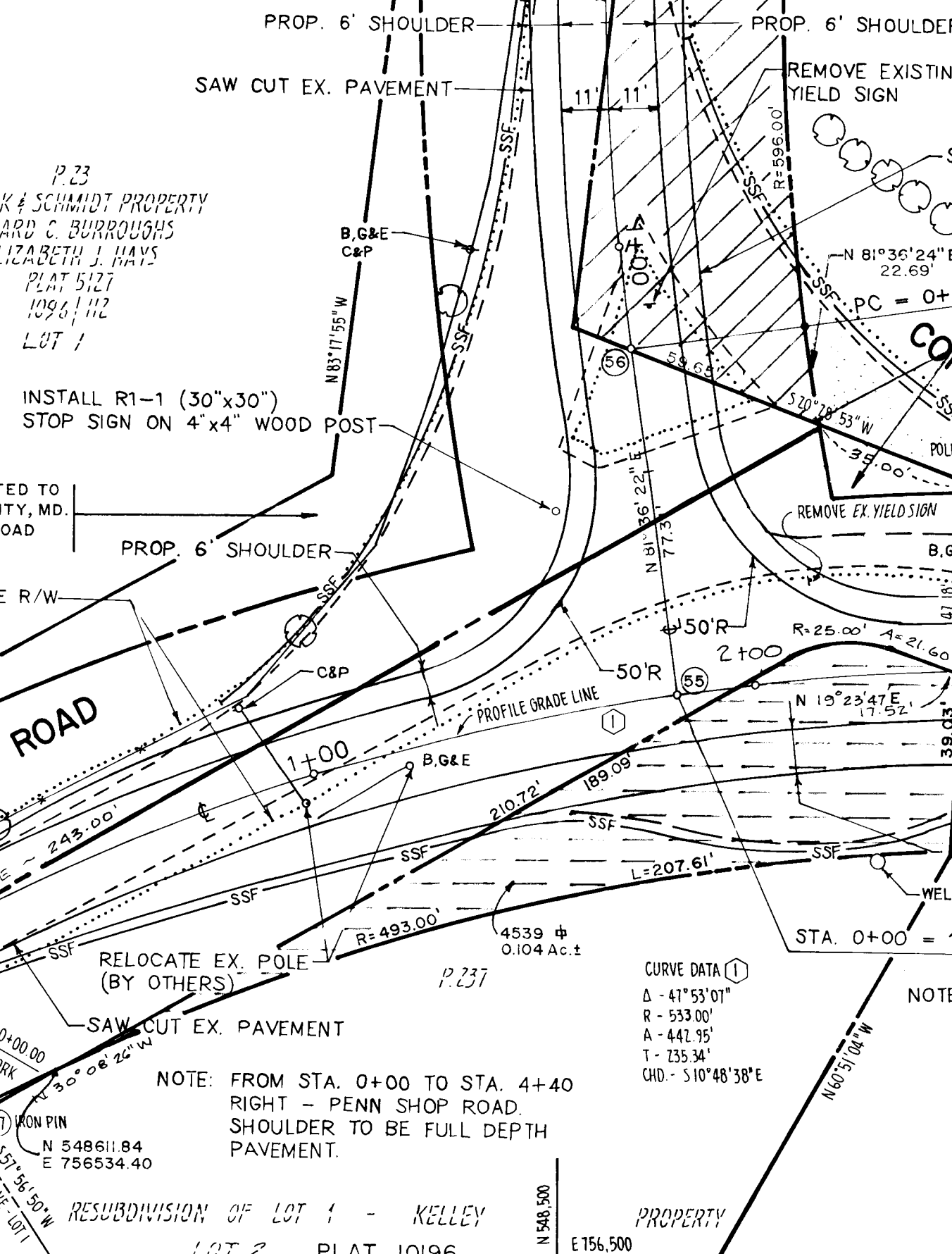
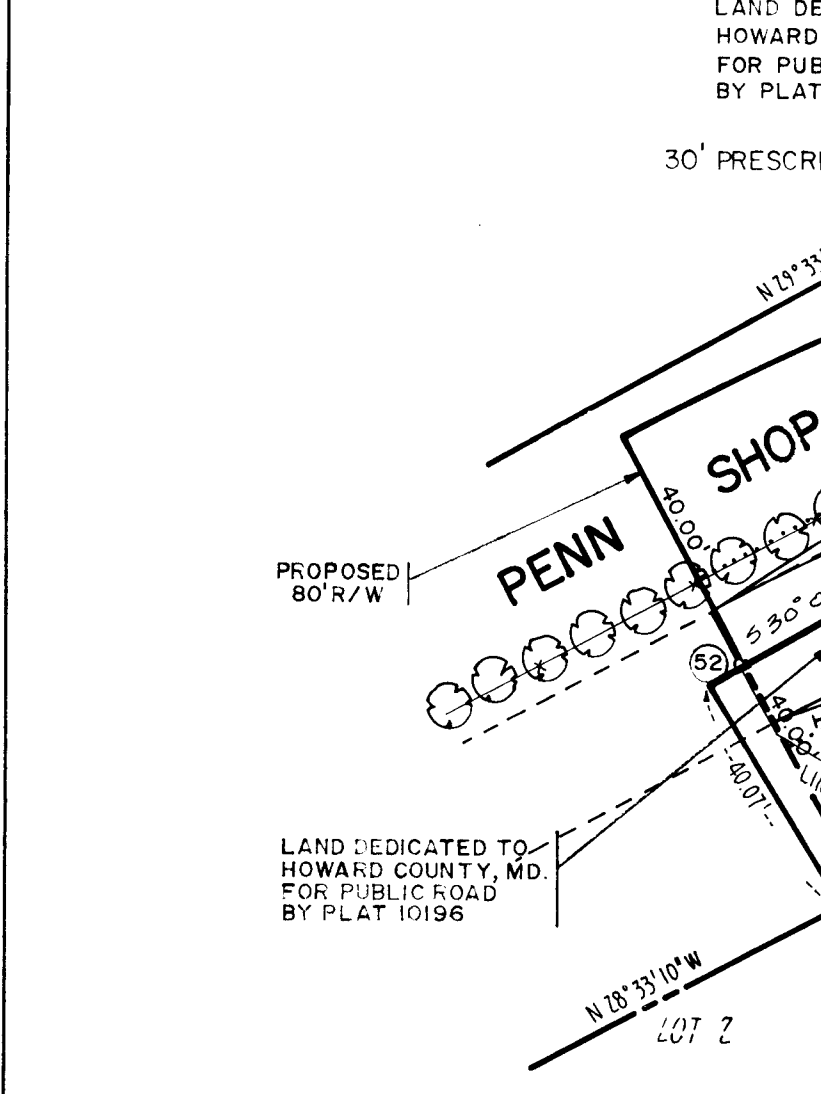
NOTE: COORDINATES BASED ON NAD 27, MARYLAND COORDINATE SYSTEM AS PROJECTED BY HOWARD COUNTY GEODETIC CONTROL STATIONS NO. 3727001 AND NO. 3726001

FEE SIMPLE AREA TABULATION			
PANEL	AREA	CO. FT.	REMARKS
PARCEL 24	0.343	SQ. FT.	0.237 MORE/LESS
PARCEL 217	1299	SQ. FT.	0.030 MORE/LESS
PARCEL 227	6697	SQ. FT.	0.154 MORE/LESS
PARCEL 228	4046	SQ. FT.	0.093 MORE/LESS
PARCEL 237	4539	SQ. FT.	0.104 MORE/LESS
TOTAL	26,914	SQ. FT.	0.618 MORE/LESS



**CURVE DATA**  
 $\Delta = 14^\circ 36' 08''$   
 $DC = 09^\circ 10' 02''$   
 $R = 625.00'$   
 $T = 80.08'$   
 $L = 159.29'$   
 $E = 5.11'$

- DECIDUOUS TREES OR SHRUBS
- INDICATES IRON PIN
- C.M.P. - INDICATES CORRUGATED METAL PIPE
- S.D.D. - INDICATES STORM DRAIN DITCH
- REMOVE EXISTING PAVEMENT SHOWN THUS PLACE 1" TOPSOIL, SEED & MULCH GRADE TO DRAIN ABANDON COUNTY INTEREST
- S.S.F. - INDICATES SLOPE SILT FENCE



APPROVED: DEPARTMENT OF PUBLIC WORKS

CHIEF: BUREAU OF ENGINEERING  
*[Signature]* 7-7-93

CHIEF: SURVEY AND DRAFTING DIVISION

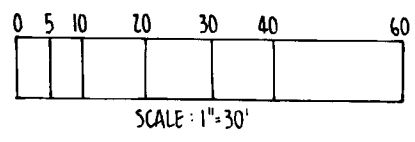
CHIEF: REAL ESTATE SERVICES DIVISION

REVISIONS

*[Signature]* 7-7-93

JEFFERSON D. HOBBS II  
 PROPERTY LINE SURVEYOR  
 MARYLAND REG. No. 362

NOTE: THIS PLAT IS BASED ON A FIELD RUN MONUMENTED BOUNDARY SURVEY PERFORMED ON OR ABOUT FEB. 20, 1992 BY HOWARD COUNTY BUREAU OF ENGINEERING.



HOWARD COUNTY DEPARTMENT OF PUBLIC WORKS

FEE SIMPLE ACQUISITION

KELLY, KESSINGER, COCITA PROPERTIES

TO

HOWARD COUNTY, MARYLAND

PROJECT NAME: PENN SHOP ROAD AT LONG CORNER ROAD INTERSECTION IMPROVEMENT

SCALE: 1" = 30'

SHEET No.: 1

JOB No.: 92005

DATE: 6-7-93 PROJECT No.: T-7063-GG PLAT No.: T-7063-GG-3