

**COORDINATES**

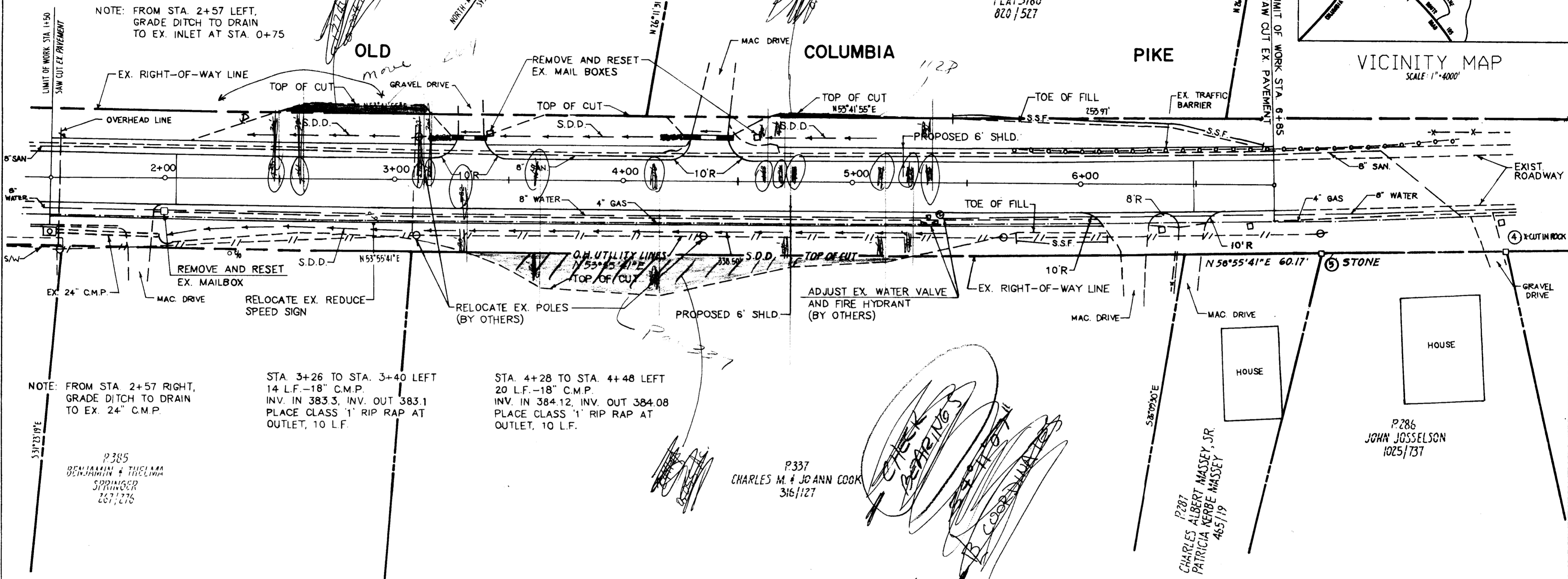
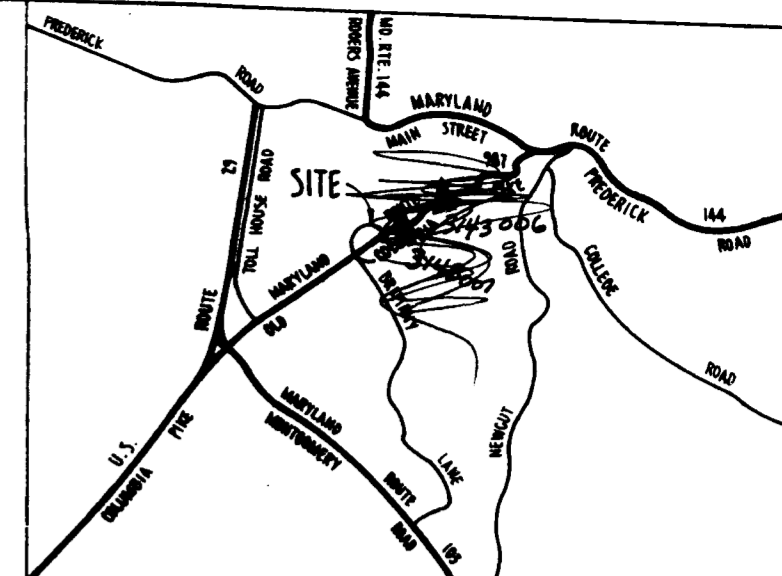
NO.	NORTH	EAST
4	520016.893	853401.786
5	519961.274	853336.661

NOTE: COORDINATES BASED ON NAD 27, MARYLAND COORDINATE SYSTEM AS PROJECTED BY HOWARD COUNTY GEODETIC CONTROL STATIONS NO. 242000 AND NO. 242001

P264  
MARY K. WURTZER  
416/643

NOTE: FROM STA. 2+57 LEFT, GRADE DITCH TO DRAIN TO EX. INLET AT STA. 0+75

NOTE: FROM STA. 5+63 TO STA. 6+85 LEFT REMOVE AND REPLACE EX. TRAFFIC BARRIER W/BEAM 122 L.F.



NOTE: FROM STA. 2+57 RIGHT, GRADE DITCH TO DRAIN TO EX. 24" C.M.P.

STA. 3+26 TO STA. 3+40 LEFT 14 L.F. -18" C.M.P. INV. IN 383.3, INV. OUT 383.1 PLACE CLASS '1' RIP RAP AT OUTLET, 10 L.F.

STA. 4+28 TO STA. 4+48 LEFT 20 L.F. -18" C.M.P. INV. IN 384.12, INV. OUT 384.08 PLACE CLASS '1' RIP RAP AT OUTLET, 10 L.F.

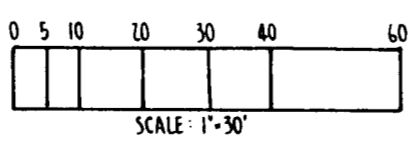
- S.S.F. - INDICATES SLOPE SILT FENCE
- S.D.D. - INDICATES SURFACE DRAIN DITCH
- C.M.P. - INDICATES CORRUGATED METAL PIPE
- INDICATES 1 1/2" BITUMINOUS OVERLAY
- INDICATES REVERTIBLE GRADING & SLOPE EASEMENT

AREA TABULATION  
GRADING & SLOPE EASEMENTS

PARCEL 264	177 SQ. FT.	0.004 AC.±
PARCEL 337	2411 SQ. FT.	0.055 AC.±
PARCEL 1128	72 SQ. FT.	0.002 AC.±
<b>TOTAL</b>	<b>2260 SQ. FT.</b>	<b>0.061 AC.±</b>

NOTE: THIS PLAT IS BASED ON A FIELD RUN MONUMENTED BOUNDARY SURVEY PERFORMED ON OR ABOUT BY HOWARD COUNTY BUREAU OF ENGINEERING.

APPROVED: DEPARTMENT OF PUBLIC WORKS	REVISIONS
CHIEF: BUREAU OF ENGINEERING	
CHIEF: SURVEY AND DRAFTING DIVISION	
CHIEF: REAL ESTATE SERVICES DIVISION	



HOWARD COUNTY DEPARTMENT OF PUBLIC WORKS  
- FEE SIMPLE ACQUISITION -  
REVERTIBLE GRADING AND SLOPE EASEMENTS

HOWARD COUNTY, MARYLAND

PROJECT NAME: OLD COLUMBIA PIKE; INTERSECTION IMPROVEMENT  
SCALE: 1"=30'  
SHEET No.: 1  
JOB No.: 92006  
DATE: \_\_\_\_\_ PROJECT No.: T-7063-66 PLAT No.: \_\_\_\_\_

SPT 7063GG-004