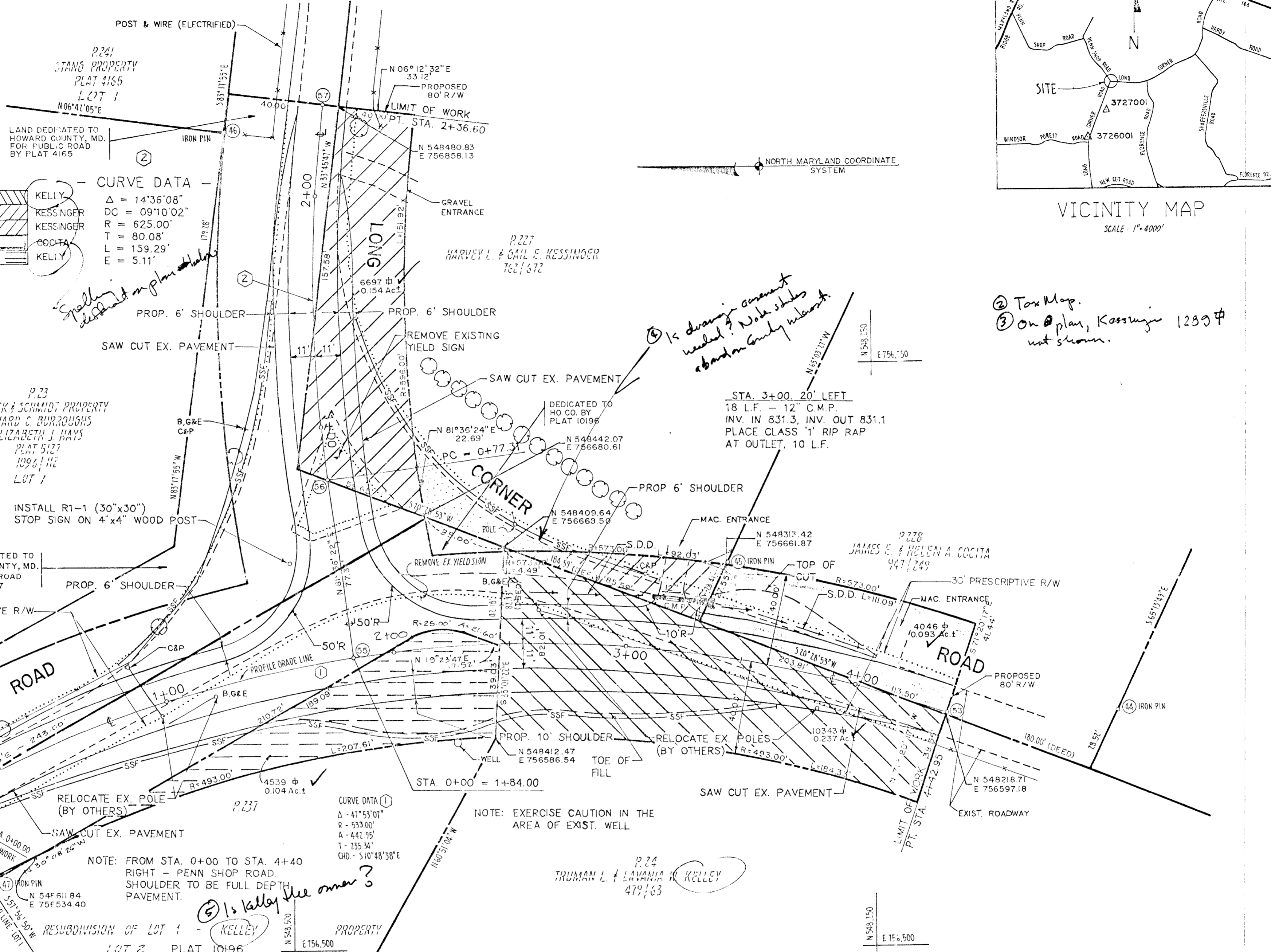


COORDINATES				
NO.	NORTH	EAST	NORTH	EAST
44	548144.10	756599.64	52	548646.80
45	548312.94	756662.67	53	548218.25
46	548530.13	756846.21	55	548473.67
47	548630.54	756513.54	56	548484.96
			57	548487.67
				756697.22
				756858.87

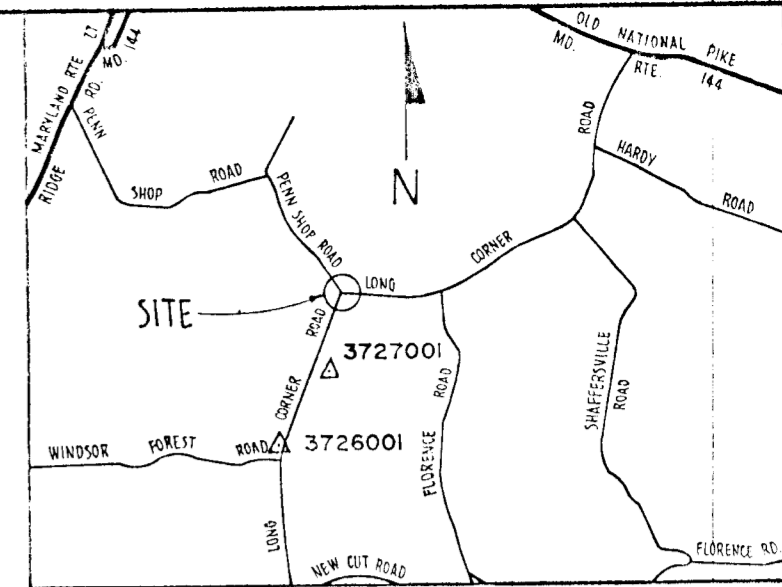
NOTE: COORDINATES BASED ON NAD 83, MARYLAND COORDINATE SYSTEM AS PROJECTED BY HOWARD COUNTY GEODETIC CONTROL STATIONS NO. 3727001 AND NO. 3726001

FEE SIMPLE AREA TABULATION

PARCEL	NO.	AREA	SQ. FT.	ACRES
PARCEL 24	24	10,343	SQ. FT.	0.237 MORE/LESS
PARCEL 217	217	1,289	SQ. FT.	0.030 MORE/LESS
PARCEL 227	227	6,697	SQ. FT.	0.154 MORE/LESS
PARCEL 228	228	4,046	SQ. FT.	0.093 MORE/LESS
PARCEL 237	237	4,539	SQ. FT.	0.104 MORE/LESS
TOTAL		26,914	SQ. FT.	0.618 MORE/LESS



② Tax Map.
③ On @ plan, Kessinger 1289 # not shown.



- DECIDUOUS TREES OR SHRUBS
- INDICATES IRON PIN
- C.M.P. - INDICATES CORRUGATED METAL PIPE
- S.D.D. - INDICATES STORM DRAIN DITCH
- REMOVE EXISTING PAVEMENT SHOWN THUS PLACE 2" TOPSOIL, SEED + MULCH GRADE TO DRAIN ABANDON COUNTY INTEREST
- SSF - INDICATES SLOPE SILT FENCE

INSTALL R1-1 (30"x30") STOP SIGN ON 4"x4" WOOD POST

CURVE DATA
 Δ - 41°53'01"
 R - 533.00'
 A - 442.95'
 T - 135.34'
 CHD - 5'10"48'38"E

NOTE: EXERCISE CAUTION IN THE AREA OF EXIST. WELL

NOTE: FROM STA. 0+00 TO STA. 4+40 RIGHT - PENN SHOP ROAD SHOULDER TO BE FULL DEPTH PAVEMENT.

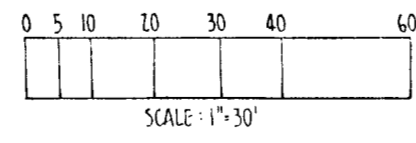
① Is Kelly the owner?

④ Is drainage easement needed? Note shows abandoned County interest.

APPROVED: DEPARTMENT OF PUBLIC WORKS
 CHIEF: BUREAU OF ENGINEERING
 [Signature] 7-293
 CHIEF: SURVEY AND DRAFTING DIVISION
 CHIEF: REAL ESTATE SERVICES DIVISION

REVISIONS
 [Table with 2 columns: No., Description]
 JEFFERSON D. HORRIS II
 PROPERTY LINE SURVEYOR
 MARYLAND REG. No. 362

NOTE: THIS PLAT IS BASED ON A FIELD RUN MONUMENTED BOUNDARY SURVEY PERFORMED ON OR ABOUT FEB. 20, 1992 BY HOWARD COUNTY BUREAU OF ENGINEERING.



HOWARD COUNTY DEPARTMENT OF PUBLIC WORKS
 FEE SIMPLE ACQUISITION
 KELLY, KESSINGER, COCITA PROPERTIES
 TO
 HOWARD COUNTY, MARYLAND
 PROJECT NAME: PENN SHOP ROAD AT LONG CORNER ROAD INTERSECTION IMPROVEMENT
 SCALE: 1" = 30'
 SHEET No.: 1
 DATE: 6-7-93 PROJECT No.: T-7063-66 JOB No.: 92005
 PLAT No.: 1063-66