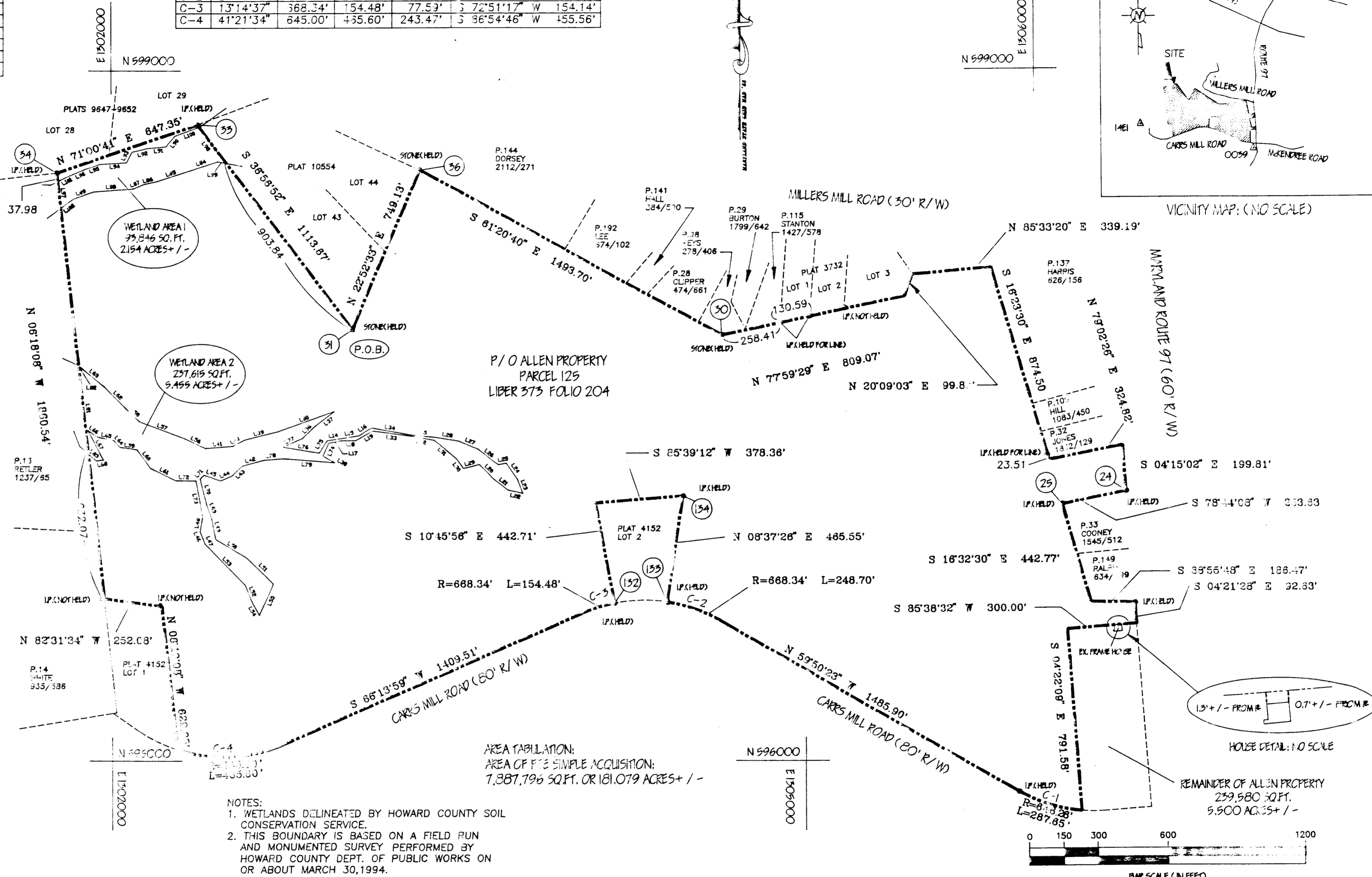


COORDINATES		
NO.	NORTH	EAST
24	597161.841	1306388.245
25	597106.437	1306110.078
30	597849.915	1304643.807
31	597875.993	1303041.844
33	598766.018	1302372.435
34	598555.384	1301760.317
36	598566.208	1303333.057
132	596685.641	1304175.900
133	596689.887	1304400.478
134	597148.712	1304470.503

CURVE TABLE:					
NO.	DELTA	RADIUS	LENGTH	TANGENT	CHORD
C-1	25°30'07"	646.26'	237.65'	146.25'	N 72°35'27" W 235.23'
C-2	21°19'13"	668.34'	248.70'	125.80'	N 70°30'00" W 247.26'
C-3	13°14'37"	368.34'	154.48'	77.53'	S 72°51'17" W 154.14'
C-4	41°21'34"	645.00'	435.60'	243.47'	S 96°54'46" W 455.56'

WETLAND DELINEATION TABLE			
LINE	DIRECTION	E	DISTANCE
L14	N 81°23'09" E		5.17'
L15	N 81°41'36" E		54.43'
L16	N 81°23'09" E		5.17'
L17	N 79°11'41" E		38.48'
L18	N 89°45'42" E		8.26'
L19	N 60°06'34" E		34.41'
L20	S 44°49'07" E		39.46'
L21	S 51°47'07" E		73.57'
L22	S 77°59'22" E		54.41'
L23	N 19°37'11" V		34.19'
L24	N 34°26'01" V		36.18'
L25	S 78°38'11" W		33.50'
L26	N 52°19'26" W		109.81'
L27	N 57°23'37" W		74.32'
L28	N 30°54'39" W		37.83'
L29	S 75°39'19" W		10.11'
L30	N 35°34'49" V		47.31'
L31	N 49°29'52" V		12.10'
L32	N 79°34'26" V		15.62'
L33	N 81°50'22" V		173.27'
L34	S 73°22'30" E		173.00'
L35	S 84°16'40" E		107.14'
L36	N 44°49'19" E		71.16'
L37	N 55°16'59" E		107.75'
L38	N 60°15'26" E		39.10'
L39	S 75°47'31" W		182.86'
L40	S 61°41'04" W		58.89'
L41	S 85°21'53" W		19.27'
L42	S 74°10'56" W		24.33'
L43	S 45°52'51" W		27.55'
L44	S 53°14'46" W		17.31'
L45	N 70°39'44" V		17.31'
L46	S 22°23'12" E		12.22'
L47	S 21°45'16" E		15.54'
L48	N 10°31'51" E		53.15'
L49	N 11°32'28" E		33.55'
L50	S 59°03'08" E		133.49'
L51	S 45°18'29" E		113.39'
L52	N 21°33'31" V		11.31'
L53	N 44°20'25" V		11.66'
L54	S 28°11'51" E		54.72'
L55	N 23°43'15" E		103.33'
L56	N 64°06'15" V		37.31'
L57	N 69°18'45" V		80.37'
L58	N 46°17'41" V		14.52'
L59	S 31°30'54" E		15.77'
L60	S 36°20'36" E		3.76'
L61	S 63°33'41" E		3.81'
L62	N 44°46'30" V		11.11'
L63	N 51°01'44" V		14.77'
L64	N 40°54'56" V		23.00'
L65	N 78°18'11" V		74.38'
L66	N 58°10'21" V		31.45'
L67	S 27°39'08" E		144.26'
L68	S 8°14'10" V		31.59'
L69	N 15°31'15" V		34.12'
L70	N 14°14'46" V		11.41'
L71	N 42°47'39" E		24.29'
L72	S 39°18'41" E		37.37'
L73	S 10°32'20" E		129.33'
L74	S 24°11'11" V		15.27'
L75	S 32°38'35" V		54.37'
L76	N 80°32'09" V		159.23'
L77	N 63°37'14" E		5.71'
L78	N 35°09'54" E		10.11'
L79	S 83°15'32" E		28.21'
L80	N 73°14'31" V		21.23'
L81	S 06°13'39" E		12.74'
L82	N 63°12'56" V		17.31'
L83	N 43°17'44" V		17.31'
L84	S 71°22'55" V		15.27'
L85	S 71°22'55" V		15.27'
L86	S 71°22'55" V		15.27'
L87	S 37°12'16" V		11.31'
L88	S 85°47'01" V		11.31'
L89	S 70°34'19" V		15.78'
L90	S 39°42'42" V		15.27'
L91	S 84°23'15" V		14.41'
L92	S 76°33'48" V		17.31'
L93	S 27°54'58" V		11.31'
L94	S 86°11'53" V		11.31'
L95	S 71°24'57" V		11.31'
L96	S 66°36'40" V		13.18'
L97	S 06°18'08" E		11.31'
L98	S 36°56'52" E		17.31'
L99	N 79°18'33" V		17.31'
L100	S 69°35'08" V		11.31'
L101	S 62°31'51" V		11.31'
L102	S 53°18'28" V		11.31'



- NOTES:
1. WETLANDS DELINEATED BY HOWARD COUNTY SOIL CONSERVATION SERVICE.
 2. THIS BOUNDARY IS BASED ON A FIELD RUN AND MONUMENTED SURVEY PERFORMED BY HOWARD COUNTY DEPT. OF PUBLIC WORKS ON OR ABOUT MARCH 30, 1994.
 3. COORDINATES SHOWN HEREON ARE BASED ON STATE OF MARYLAND COORDINATE SYSTEM AS PROJECTED BY HOWARD COUNTY CONTROL STATIONS 0039 AND 14E1 (SHOWN IN FEET).

APPROVED:	REVISIONS	
_____ DIRECTOR: DEPARTMENT OF PUBLIC WORKS	_____ DATE	
_____ DIRECTOR: DEPARTMENT OF RECREATION AND PARKS	_____ DATE	
_____ CHIEF: REAL ESTATE SERVICES	_____ DATE	

HOWARD COUNTY DEPARTMENT OF PUBLIC WORKS
 FEE SIMPLE ACQUISITION
 ALLEN PROPERTY
 TAX MAP 14 ELECTION DIST. 4
 PARCEL 125 LIBER 373 FOLIO 204

PROJECT NO.: N-3100-C
 PLAT NO.: N-3100-C-1
 DATE: APRIL 15, 1994
 SCALE: 1"=300'
 JOB NO.: 94040
 FIELD BOOK: 236
 C:\DCAD\WG\ALLEN
 COMPUTED BY: AMB DRAWN BY: CAD CHECKED BY: JDH SHEET 1 OF 1

PREPARED BY:
 HOWARD COUNTY DEPT. OF PUBLIC WORKS
 BUREAU OF ENGINEERING
 SURVEY / DRAFTING DIVISION
 3450 COURT HOUSE DRIVE
 ELLICOTT CITY, MD. 21103
 (410) 313-2117