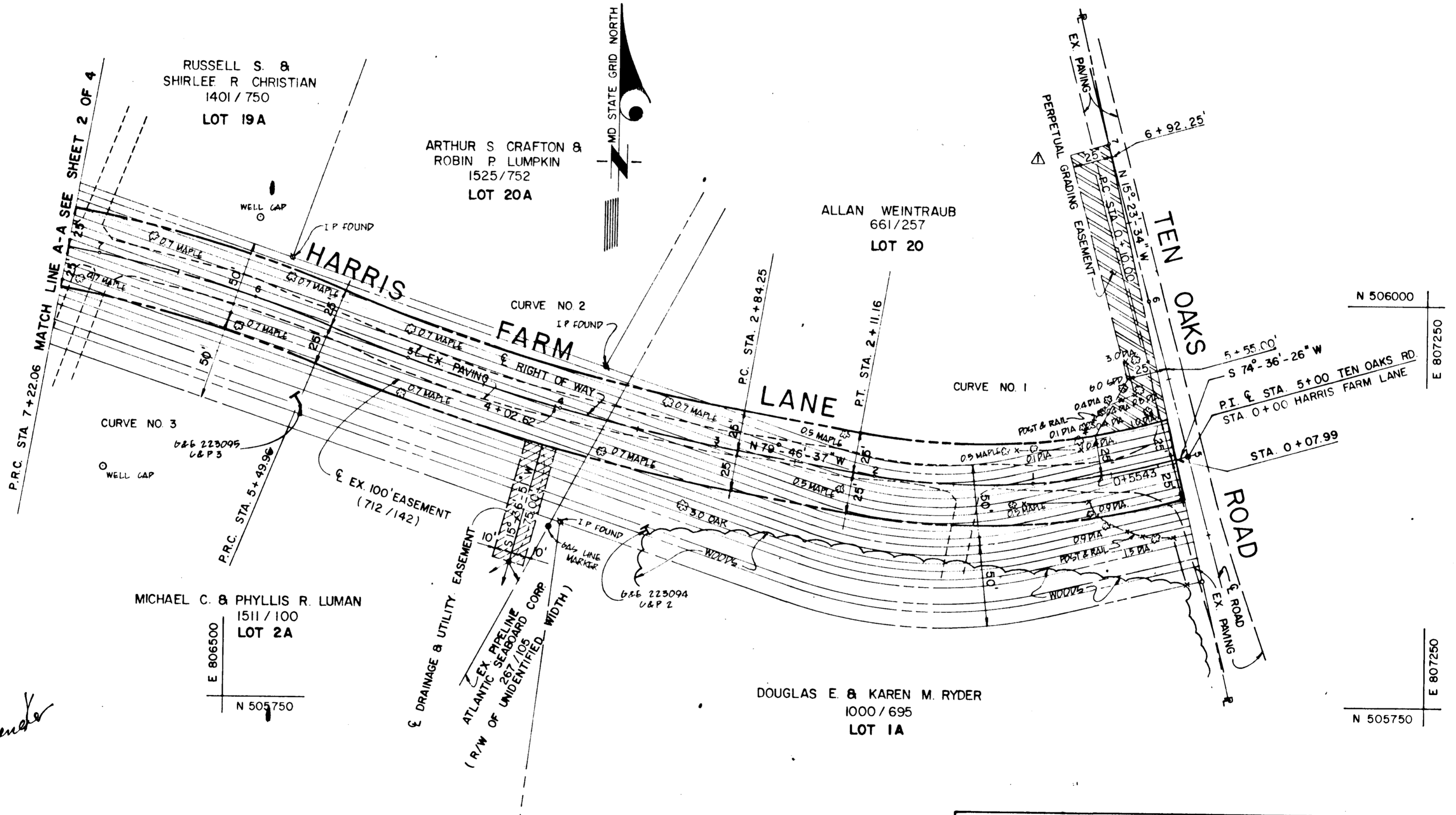


COORDINATE TABLE			CURVE DATA					
STATION	NORTH	EAST	CURVE NO.	$\Delta$	R	L	T	CHORD
0+00	505905.01	807100.84	1	25°-36'-57"	449.94'	201.16'	102.29'	S 87° 24' 55" W 199.49'
0+07.99	505902.89	807093.14	2	12°-06'-40"	1257.01'	265.71'	133.35'	N 73° 43' 17" W 265.21'
PC 0+10.00	505902.36	807091.20	3	12°-16'-37"	803.18'	172.10'	86.38'	N 73° 48' 15" W 171.77'
PI CURVE NO 1	505875.21	806992.58						
PT 2+11.16	505893.36	806891.91						
PC 2+84.25	505906.33	806819.98						
PI CURVE NO 2	505930.00	806688.75						
P.R.C 5+49.96	505957.55	806555.90						
PI CURVE NO 3	506013.50	806485.50						
P.R.C 7+22.06	506028.59	806400.44						

NOTE:  
 COORDINATES SHOWN HEREON ARE BASED ON  
 HOWARD COUNTY GEODETIC CONTROL STATIONS  
 2635004 & 2735001



LEGEND	NO	BY	REVISIONS	DATE
[Symbol] FEE SIMPLE ACQUISITION				
[Symbol] DRAINAGE & UTILITY EASEMENT				
[Symbol] PERPETUAL GRADING EASEMENT				
[Symbol] PERPETUAL EASEMENT TO DISCHARGE FLOW OF WATER UPON EXISTING GROUND				
COMPUTED BY: A.M.D.				
DRAWN BY: Y.P.				
CHECKED BY: W.H. / A.M.D.				

APPROVED: BUREAU OF ENGINEERING	DATE
<i>Michael C. Luman</i>	6-1-87
CHIEF - BUREAU OF ENGINEERING	DATE
<i>Andrew M. Luman</i>	5-19-87
CHIEF - SURVEY & DRAFTING DIV.	DATE
APPROVED: LAND ACQUISITION	
<i>Richard M. Hall</i>	6/1/87
CHIEF - LAND ACQUISITION	DATE

HOWARD COUNTY, MARYLAND  
 DEPARTMENT OF PUBLIC WORKS  
 BUREAU OF ENGINEERING  
 SURVEY AND DRAFTING DIVISION

HARRIS FARM LANE  
 RIGHT OF WAY PROJECT: FIFTH ELECTION DISTRICT, HOWARD COUNTY, MARYLAND  
 PROJECT NO: J-4078-GG  
 DATE: 4-24-87  
 SCALE: 1" = 50'  
 SHEET 1 OF 4  
 DIRECTOR - DEPARTMENT OF PUBLIC WORKS  
 PLAT NO: J-4078-GG-1

SPJ4078 GG - 001

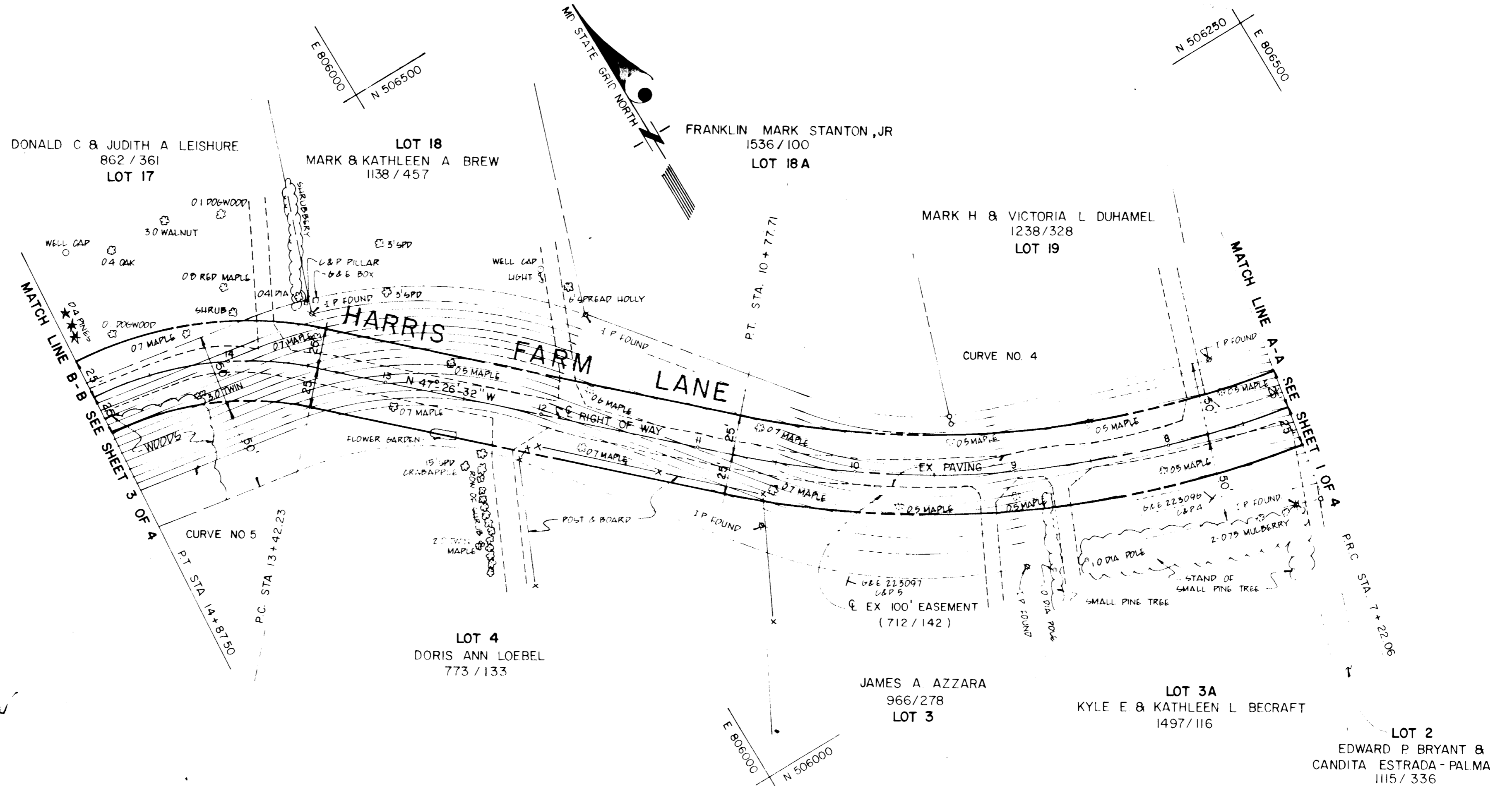
COORDINATE TABLE

STATION	NORTH	EAST	CURVE NO	ANGLE	R	L	T	CHORD
P.R.C 7 + 22.06	506028.59	806400.44	4	32°-30'-02"	626.98'	355.65'	182.75'	N 63°-41'-33"W-350.90'
P.I CURVE NO 4	506060.50	806220.50	5	37°-50'-05"	220.00'	145.27'	75.40'	N 66°-21'-35"W-142.65'
PT 10 + 77.71	506184.10	806085.88						
PC 13 + 42.23	506363.01	805891.04						
P.I CURVE NO 5	506414.00	805835.50						
PT 14 + 87.50	506420.21	805760.36						

CURVE DATA

NOTE:

COORDINATES SHOWN HEREON ARE BASED ON HOWARD COUNTY GEODETIC CONTROL STATIONS 2635004 & 2735001



LEGEND	
	FEE SIMPLE ACQUISITION
COMPUTED BY: A.M.D.	
DRAWN BY: Y.P.	
CHECKED BY: WH / A.M.D.	

REVISIONS	

APPROVED: BUREAU OF ENGINEERING	
CHIEF - BUREAU OF ENGINEERING	DATE
<i>Andrew M. ...</i>	5-19-87
CHIEF - SURVEY & DRAFTING DIV.	DATE
APPROVED: LAND ACQUISITION	
CHIEF - LAND ACQUISITION	DATE

HOWARD COUNTY, MARYLAND  
 DEPARTMENT OF PUBLIC WORKS  
 BUREAU OF ENGINEERING  
 SURVEY AND DRAFTING DIVISION

HARRIS FARM LANE - PRIVATE ROAD  
 FIFTH ELECTION DISTRICT, HOWARD COUNTY, MARYLAND

PROJECT NO. J-4078-GG  
 DATE 4-24-87

SCALE: 1" = 50'  
 SHEET 2 OF 4

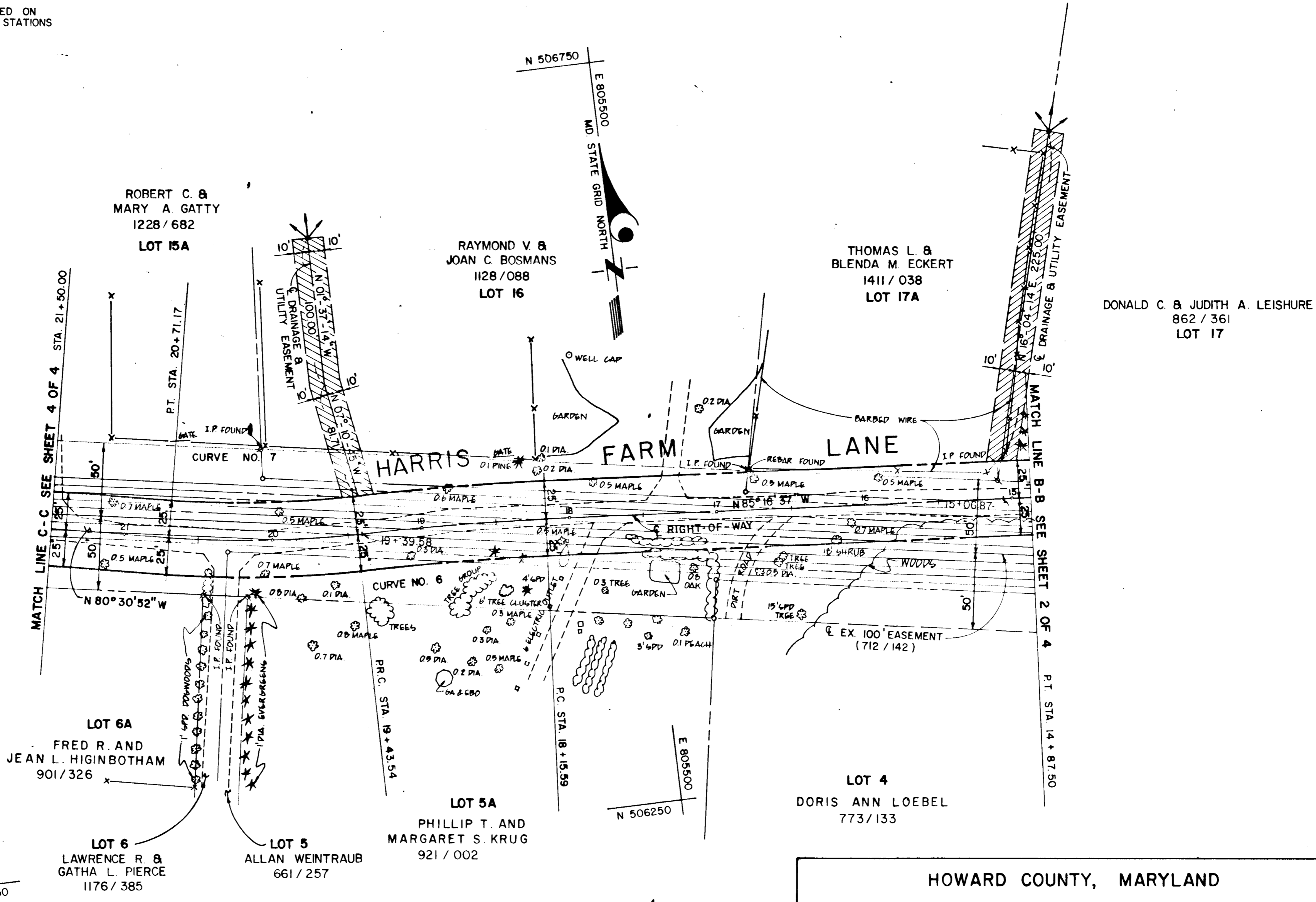
DIRECTOR - DEPARTMENT OF PUBLIC WORKS  
 PLAT NO: J-4078-GG-2

SPJ4078GG-002

COORDINATE TABLE

STATION	NORTH	EAST	CURVE No.	Δ	R	L	T	CHORD
P.T. 14+87.50	506420.21	805760.36	6	4° 03' 06"	1809.33'	127.95'	64.00'	N 87° 18' 10" W - 127.92'
P.C. 18+15.59	506447.23	805433.28	7	10° 44' 25"	680.84'	127.63'	64.00'	N 83° 57' 30" W - 127.44'
P.I. CURVE No. 6	506452.50	805369.50						
P.R.C. 19+43.64	506453.25	805305.50						
P.I. CURVE No. 7	506454.00	805241.50						
P.T. 20+71.27	506466.66	805178.77						

NOTE:  
 COORDINATES SHOWN HEREON ARE BASED ON  
 HOWARD COUNTY GEODETIC CONTROL STATIONS  
 2635004 & 2735001



LEGEND	
	FEE SIMPLE ACQUISITION
	DRAINAGE & UTILITY EASEMENT
	PERPETUAL EASEMENT TO DISCHARGE FLOW OF WATER UPON EXISTING GROUND
COMPUTED BY: A.M.D.	
DRAWN BY: Y.P.	
CHECKED BY: W.M.H. / A.M.D.	

REVISIONS

APPROVED: BUREAU OF ENGINEERING	
CHIEF - BUREAU OF ENGINEERING	DATE
<i>Andrew M. Egan</i>	5-19-87
CHIEF - SURVEY & DRAFTING DIV.	DATE
APPROVED: LAND ACQUISITION	
CHIEF - LAND ACQUISITION	DATE

HOWARD COUNTY, MARYLAND  
 DEPARTMENT OF PUBLIC WORKS  
 BUREAU OF ENGINEERING  
 SURVEY AND DRAFTING DIVISION

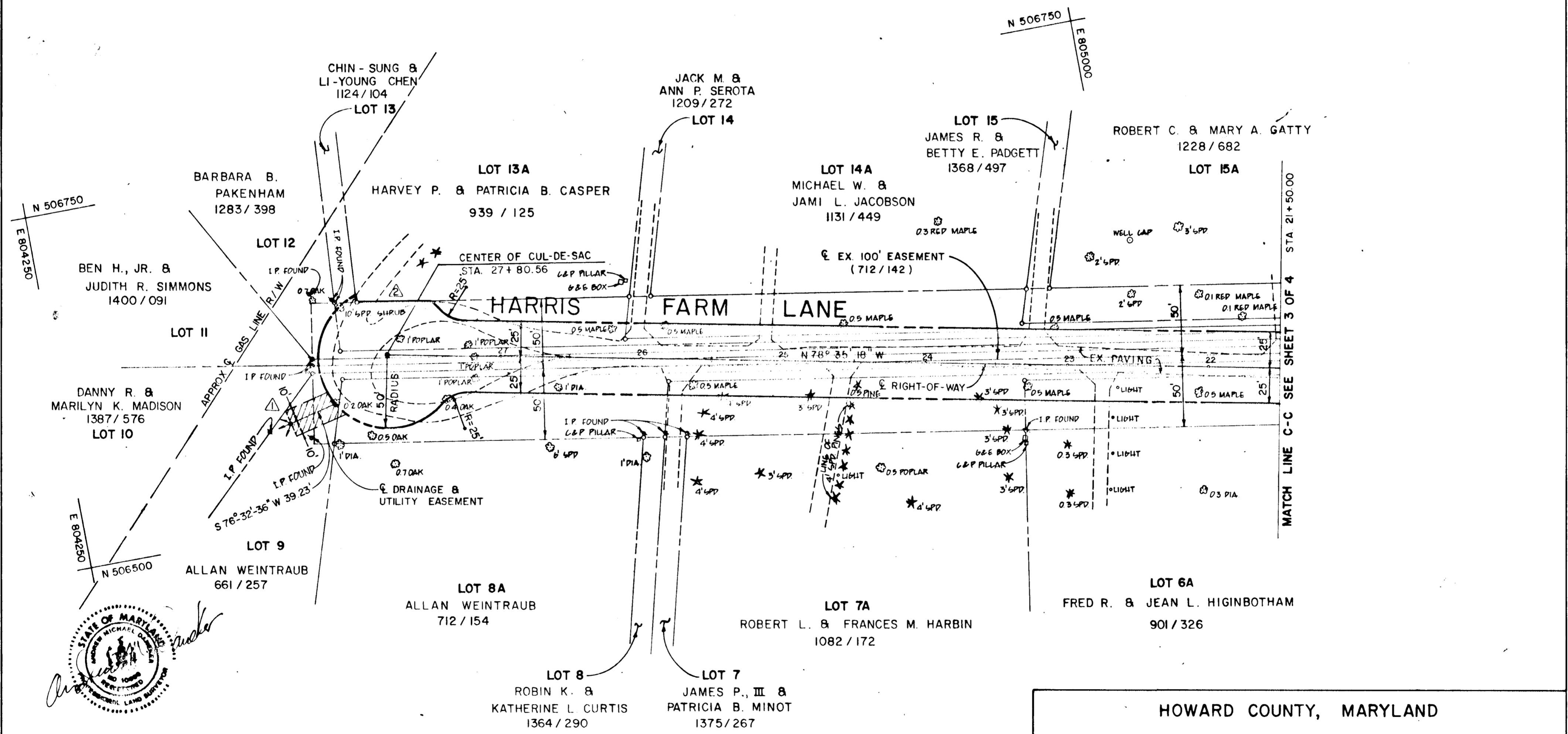
HARRIS FARM LANE - PRIVATE ROAD  
 RIGHT OF WAY PROJECT: FIFTH ELECTION DISTRICT, HOWARD COUNTY, MARYLAND  
 PROJECT NO: J-4078-GG  
 DATE: 4-24-87

SCALE: 1" = 50'  
 SHEET 3 OF 4  
 PLAT NO: J-4078-GG-3

DIRECTOR - DEPARTMENT OF PUBLIC WORKS

COORDINATE TABLE		
STATION	NORTH	EAST
27+80.56	506607.00	804483.50

NOTE: COORDINATES SHOWN HEREON ARE BASED ON HOWARD COUNTY GEODETIC CONTROL STATIONS 2635004 & 2735001



LEGEND	NO	BY	REVISIONS	DATE
FEE SIMPLE ACQUISITION	1	Y.P.	REVISED DRAINAGE & UTILITY EASEMENT	7-22-87
DRAINAGE & UTILITY EASEMENT	2	Y.P.	REDESIGN CUL-DE-SAC AT LOT 13A	8-13-87
PERPETUAL EASEMENT TO DISCHARGE FLOW OF WATER UPON EXISTING GROUND				

APPROVED: BUREAU OF ENGINEERING	
<i>Michael J. Neuman</i>	6-1-87
CHIEF - BUREAU OF ENGINEERING	DATE
<i>Richard M. Hall</i>	5-19-87
CHIEF - SURVEY & DRAFTING DIV.	DATE
APPROVED: LAND ACQUISITION	
<i>Richard M. Hall</i>	6/1/87
CHIEF - LAND ACQUISITION	DATE

HOWARD COUNTY, MARYLAND  
DEPARTMENT OF PUBLIC WORKS  
BUREAU OF ENGINEERING  
SURVEY AND DRAFTING DIVISION

HARRIS FARM LANE  
RIGHT OF WAY PROJECT: FIFTH ELECTION DISTRICT, HOWARD COUNTY, MARYLAND  
PROJECT NO: J-4078-GG  
DATE: 4-24-87  
SCALE: 1" = 50'  
SHEET 4 OF 4  
PLAT NO: J-4078-GG-4

*Michael J. Neuman* 6-1-87  
DIRECTOR - DEPARTMENT OF PUBLIC WORKS

SPJA078GG-004