

PROPERTY COORDINATES		
NO	NORTH	EAST
1	540266.39	798188.69
2	541111.78	798307.37
3	541153.44	798210.33
4	541482.40	798287.59
5	541676.27	797697.01
6	542420.44	797785.93
7	542032.85	799387.85
8	541932.39	799276.13
9	540689.70	799400.48
10	539666.86	799996.01

NO	BEARING	DIST.
A	S66°04'56"E	70.40
B	S68°59'48"E	88.70
C	S61°24'56"E	103.67
D	S69°13'10"E	206.92
E	S65°33'07"E	51.92
F	S73°42'11"E	310.13
G	S82°14'01"E	103.78
H	S78°34'41"E	164.07
I	S74°32'39"E	51.85
J	S75°18'01"E	51.91
K	S81°56'13"E	101.64
L	S83°23'32"E	122.86
M	S84°10'35"E	101.07
N	S89°53'11"E	40.58

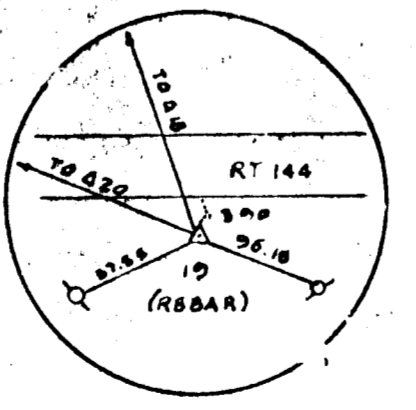
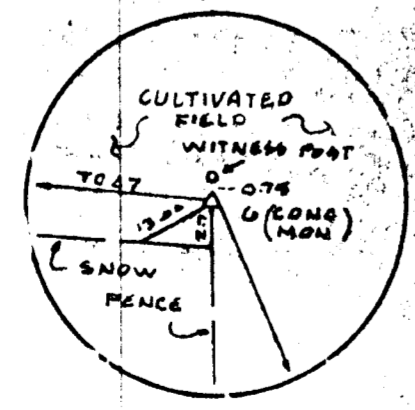
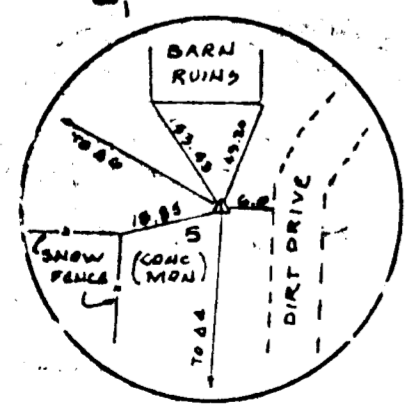
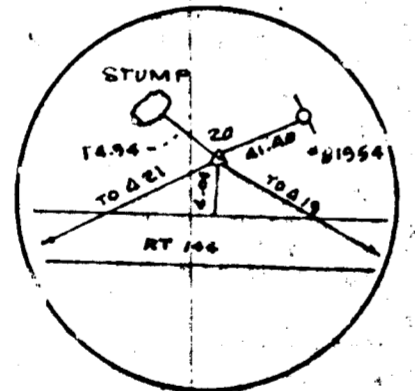
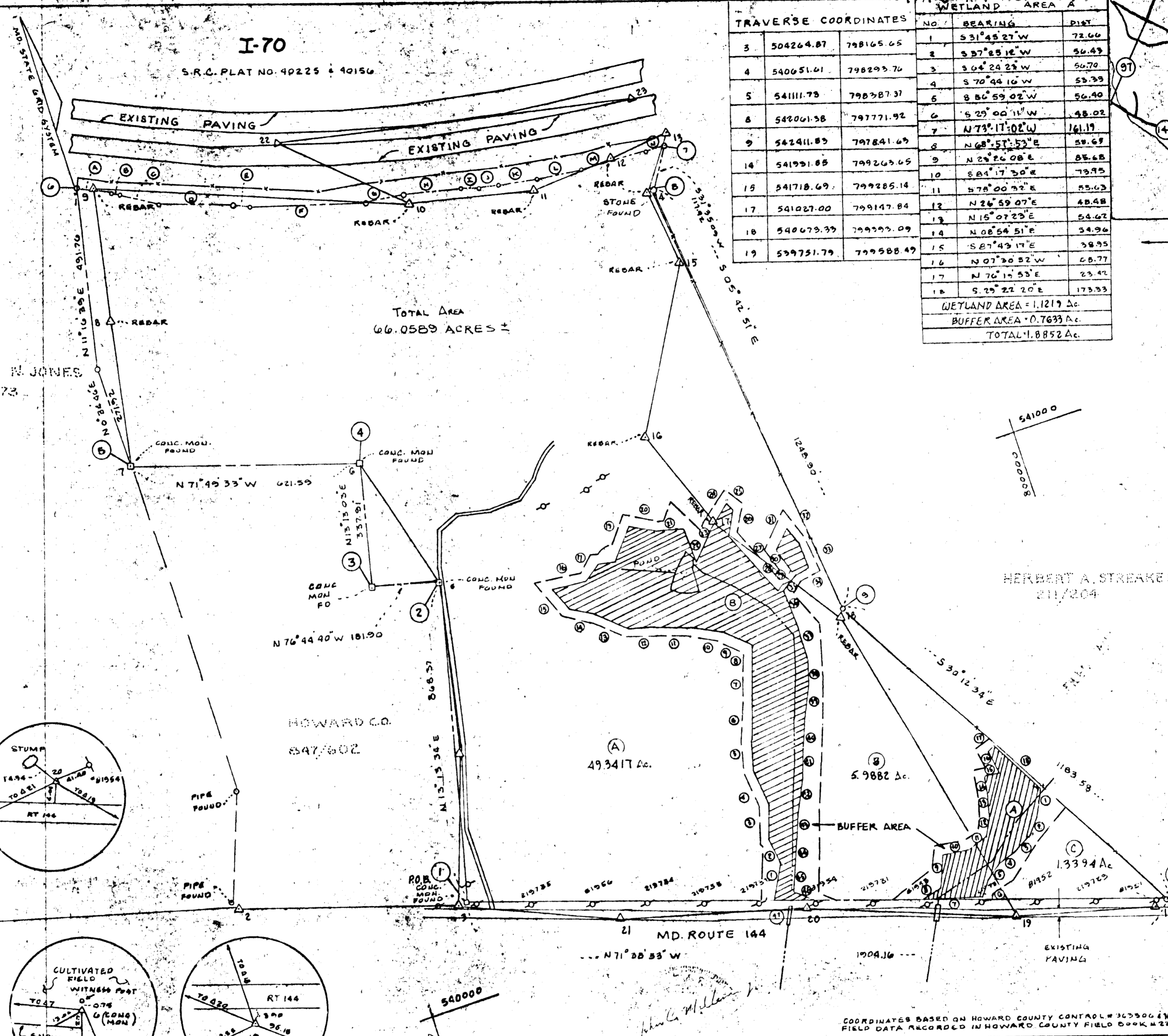
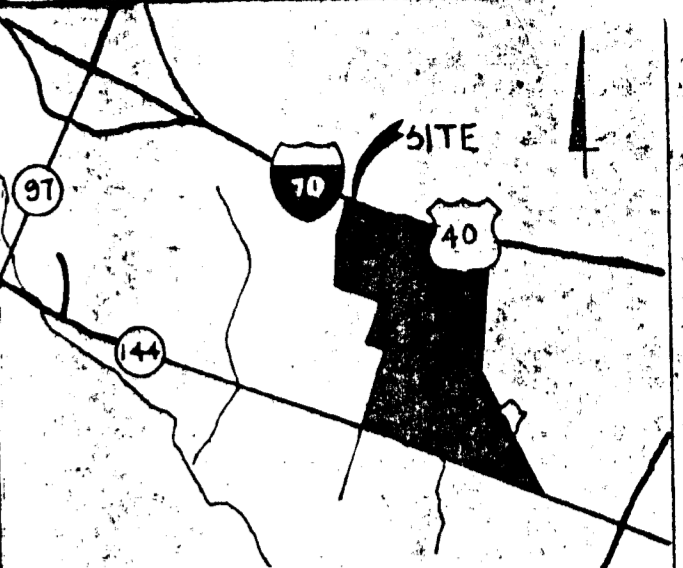
TRAVERSE COORDINATES		
3	504264.87	798165.65
4	540651.01	798293.70
5	541111.78	798307.37
6	542061.38	797771.92
9	542411.83	797841.63
14	541931.85	799263.65
15	541718.69	799285.14
17	541027.00	799147.84
18	540679.33	799393.09
19	539751.79	799588.49

WETLAND AREA A		
NO	BEARING	DIST.
1	S31°45'27"W	72.66
2	S37°45'12"W	56.43
3	S04°24'23"W	50.70
4	S70°44'10"W	53.33
5	S86°59'02"W	50.40
6	S23°00'11"W	48.02
7	N73°17'02"W	161.19
8	N68°51'52"E	59.67
9	N24°26'08"E	85.68
10	S81°17'30"E	73.95
11	S75°00'32"E	53.63
12	N24°59'07"E	48.48
13	N15°07'23"E	54.62
14	N08°54'51"E	54.96
15	S27°43'17"E	38.95
16	N07°30'32"W	68.77
17	N70°15'53"E	23.42
18	S25°22'20"E	173.33

WETLAND AREA = 1.1219 Ac.  
 BUFFER AREA = 0.7633 Ac.  
 TOTAL = 1.8852 Ac.

WETLAND AREA B		
NO	BEARING	DIST.
1	N32°55'11"E	104.10
2	N14°38'52"W	73.31
3	N17°32'37"E	93.60
4	N05°12'01"W	96.93
5	N13°12'46"E	85.84
6	N20°32'57"E	106.03
7	N18°39'05"E	82.79
8	N18°50'10"E	70.05
9	N48°40'33"W	93.04
10	N60°32'45"W	89.22
11	N72°21'07"W	81.37
12	N68°04'21"W	88.75
13	N52°35'52"W	84.57
14	N50°28'54"W	73.41
15	N22°06'42"W	64.40
16	S83°55'45"E	95.37
17	N49°31'29"E	54.60
18	S77°26'23"E	49.57
19	N39°52'52"E	106.04
20	S59°48'14"E	79.26
21	S70°34'24"E	67.36
22	S01°39'12"W	105.51
23	N42°15'58"E	109.84
24	N50°31'18"E	84.98
25	S36°21'25"E	28.72
26	S38°05'20"W	76.09
27	S20°47'06"E	100.45
28	S26°27'14"E	102.73
29	N46°46'42"E	64.58
30	N16°54'49"W	67.26
31	N42°58'41"E	64.58
32	S20°23'07"E	47.11
33	S06°57'26"E	75.17
34	S76°15'28"W	49.28
35	S50°40'15"W	61.03
36	S06°38'09"E	92.87
37	S01°48'40"E	89.38
38	S20°28'14"W	82.94
39	S22°07'04"W	87.97
40	S20°17'00"W	83.19
41	S22°56'05"W	88.87
42	S26°37'47"W	85.75
43	S15°49'42"W	75.93
44	S25°05'15"W	75.45
45	S10°05'53"W	82.55
46	S50°07'27"E	54.82
47	N71°30'48"W	103.66

WETLAND AREA = 4.8170 Ac.  
 BUFFER AREA = 2.7145 Ac.  
 TOTAL = 7.5315 Ac.



LEGEND  
 Δ DENOTES TRAVERSE STATION  
 □ DENOTES CONCRETE MONUMENT  
 ○ DENOTES UTILITY POLE  
 --- DENOTES FENCE LINE  
 ▨ DENOTES WETLAND AREA

COMPUTED BY: PAUL EWELL  
 DRAWN BY: PAUL EWELL

REVISIONS

APPROVED: BUREAU OF ENGINEERING  
 \_\_\_\_\_ DATE: 3-13-90  
 CHIEF - BUREAU OF ENGINEERING

APPROVED: LAND ACQUISITION  
 \_\_\_\_\_ DATE: \_\_\_\_\_  
 CHIEF - LAND ACQUISITION

HOWARD COUNTY, MARYLAND  
 DEPARTMENT OF PUBLIC WORKS  
 FEE SIMPLE ACQUISITION  
 STEPHEN N. JONES, ET AL. PROPERTY

PROJECT NO: C-0182  
 DATE: JANUARY, 1990  
 SCALE: 1" = 200'  
 SHEET 1 OF 1  
 PLAT NO: C-0182-1