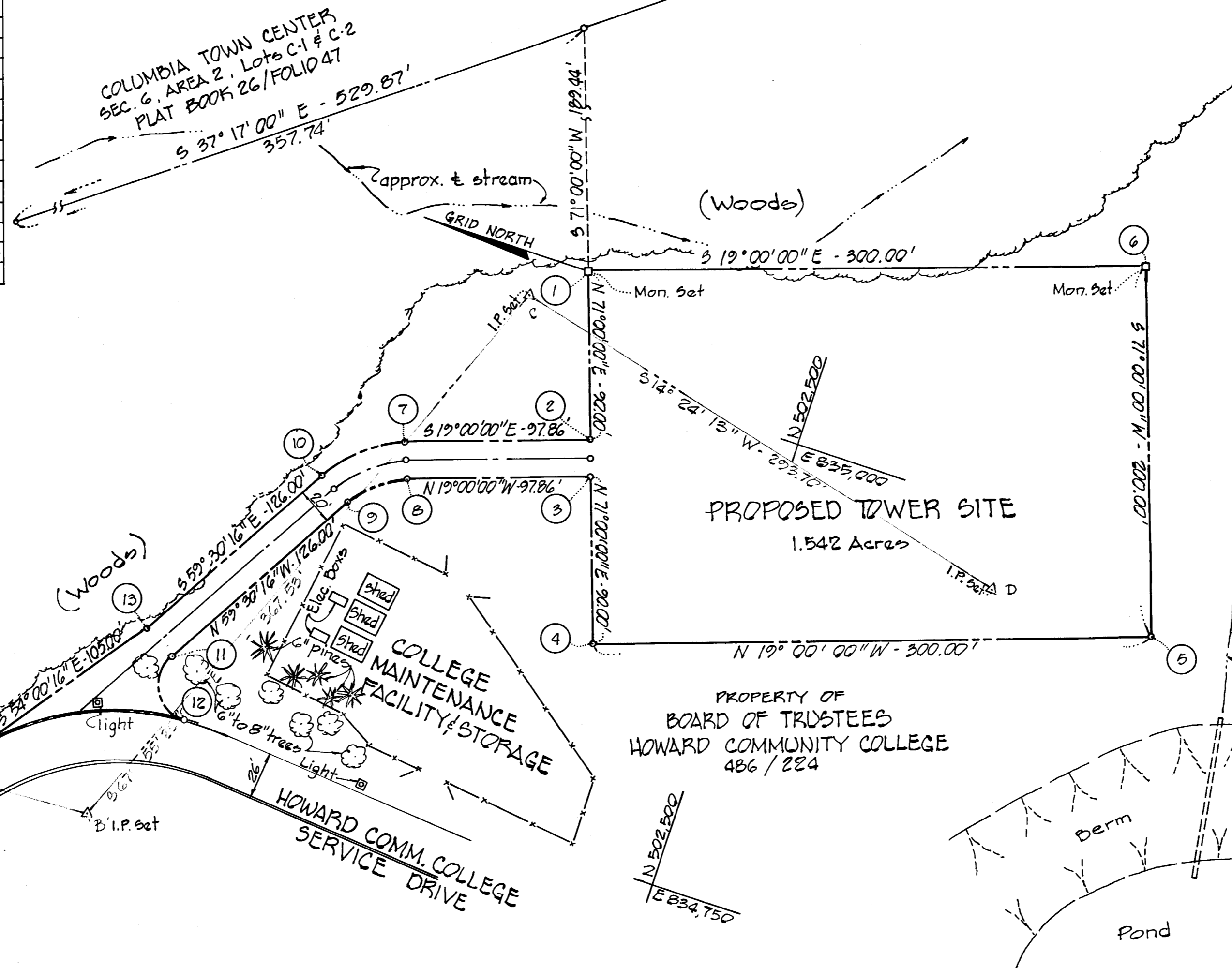
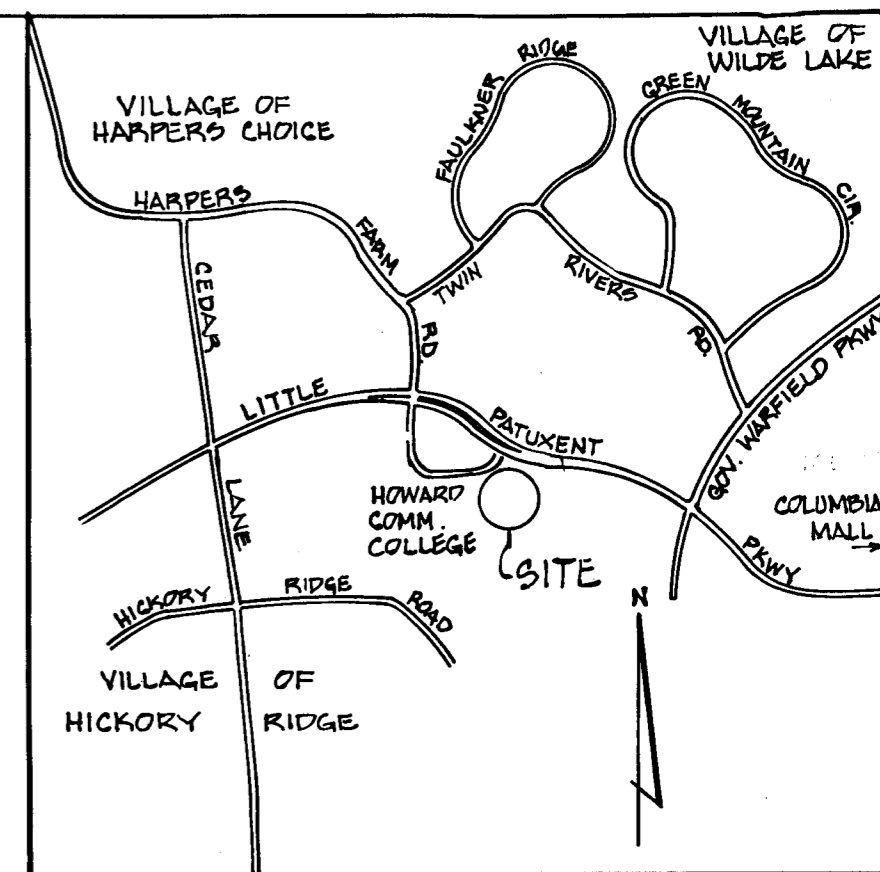


COORDINATE SCHEDULE		
PT.	NORTH	EAST
1	502,636.000	835,252.500
2	502,606.699	834,967.403
3	502,600.188	834,248.492
4	502,570.886	834,863.396
5	502,287.231	834,961.067
6	502,352.345	835,150.171
7	502,699.227	834,935.543
8	502,692.716	834,216.633
9	502,719.526	834,894.724
10	502,736.759	834,904.874
11	502,783.467	834,786.154
12	502,765.709	834,756.012
13	502,800.701	834,796.304
14	502,862.412	834,711.952
2640007	503,064.293	835,098.628
Δ-A	503,039.759	834,678.923
Δ-B	502,799.158	834,690.869
Δ-C	502,661.025	835,031.453
Δ-D	502,376.558	834,958.395

CURVE DATA								
Curve	Rad.	Δ	Length	tan	Ch. Length	Ch. Brg.		
(12) to (14)	131.00'	47° 58' 42"	109.70'	58.30'	106.52'	N 24° 47' 19" W		
(10) to (7)	70.00'	40° 30' 16"	49.49'	25.83'	48.47'	S 39° 15' 15" E		
(8) to (9)	50.00'	40° 30' 16"	35.35'	18.45'	34.63'	N 39° 15' 15" W		
(11) to (12)	20.00'	122° 00' 00"	42.59'	36.08'	34.98'	S 59° 29' 44" W		



AREA TABULATION
 Total No. of Lots 1
 Total Area of Lots 1.542 Ac.
 Total Area of R/W Dedication: N/A
 Total Flood Plain Dedication: N/A
 Total Area of Plat: 1.542 Ac.

- NOTES
- Title ref: Part of 486/224
 - Coordinates shown hereon are based on Howard County Geodetic Control Point Nos. 2640007 & 2640004
 - Concrete Monuments Set
Iron Pins Set

REVISIONS
COMPUTED BY J.D.H.
DRAWN BY MAW
CHECKED BY J.D.H.

APPROVED: For Public water and Public sewerage. HOWARD COUNTY HEALTH DEPARTMENT.

NO SANITARY FACILITIES NECESSARY
 HOWARD COUNTY HEALTH OFFICER DATE

APPROVED: HOWARD COUNTY OFFICE OF PLANNING & ZONING.

PLANNING DIRECTOR DATE

APPROVED: For storm drainage systems, Public Roads, Public Sewer & Public Water. HOWARD COUNTY DEPARTMENT OF PUBLIC WORKS

DIRECTOR DATE

OWNERS STATEMENT

I, _____ as representative acting for the Board of Trustees of the Howard Community College, owners of the property shown and described hereon, hereby adopt this plan of subdivision; and in consideration of the approval of this plat by the office of Planning and Zoning, establish the minimum building restriction lines. All easements or rights-of-way affecting the property, are included in this plan of subdivision. Witness my hand this _____ day of _____ 19__.

NAME - TITLE	DATE	WITNESS
APPROVED - BUREAU OF ENGINEERING		
CHIEF - BUREAU OF ENGINEERING	1-30-85	DATE
CHIEF - CONSTRUCTION INSPECTION/SURVEY DIVISION		DATE
APPROVED LAND ACQUISITION SECTION		
CHIEF - LAND ACQUISITION SECTION	2/21/85	DATE

SURVEYORS CERTIFICATE

I hereby certify that the final plat shown hereon is correct, that it is a minor subdivision of part of the lands conveyed by the Howard Research and Development Corp. to the Board of Trustees of the Howard Community College by deed dated April 18, 1968 as recorded among the land records of Howard County, Md. in Liber 486, Folio 224 and all monuments shown thereon are set as shown in accordance with the Annotated Code of Maryland, as amended 1-11-85 date.

Russell E. Lawman - Prof. L.S. # 3947

RECORDED AS PLAT NO. _____ ON _____ AMONG THE LAND RECORDS OF HOWARD CO.

PLAT OF MINOR SUBDIVISION
 BOARD OF TRUSTEES OF
 HOWARD COMMUNITY COLLEGE
 PLAT FOR

POLICE AND FIRE TRAINING FACILITY
 TOWER SITE
 8TH. ELECTION DISTRICT

DATE DEC. 13, 1984 SCALE 1"=50' SHEET 1 OF 1

HOWARD COUNTY DEPT. OF PUBLIC WORKS
 CONSTRUCTION INSPECTION/SURVEY DIVISION
 11226 ROUTE 216.
 LAUREL, MARYLAND 20707