





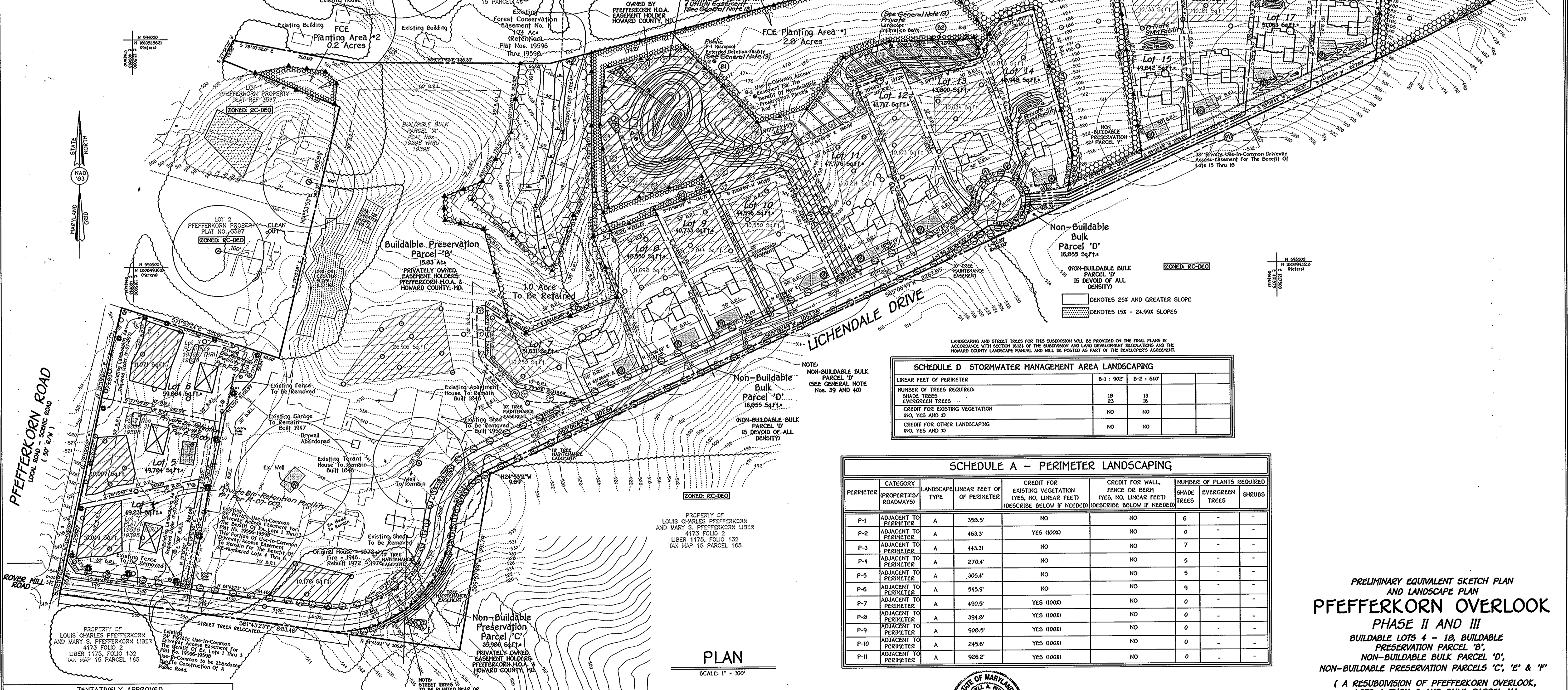
LEGEND	
SYMBOL	DESCRIPTION
(Symbol)	EXISTING TREE LINE
(Symbol)	PASSED PERC HOLES
(Symbol)	FAILED PERC HOLES
(Symbol)	LANDSCAPE PERIMETER
(Symbol)	STREAM BUFFER
(Symbol)	LANDSCAPE PERIMETER
(Symbol)	SILT FENCE
(Symbol)	LIMIT OF DISTURBANCE
(Symbol)	SOIL BORING LOCATION
(Symbol)	FOREST CONSERVATION EASEMENT (RETAINED)
(Symbol)	FOREST CONSERVATION EASEMENT (REFORESTED)
(Symbol)	PROPOSED TREE LINE
(Symbol)	WETLANDS LIMITS
(Symbol)	WETLANDS BUFFER
(Symbol)	WETLANDS AREA
(Symbol)	Public Access, Drainage, SWM & Utility Easement
(Symbol)	Private Drainage, SWM & Utility Easement

CENTERLINE CURVE DATA				
ROAD NAME	STA. TO STA.	RADIUS	LENGTH	DELTA
LICHENDALE DR.	6+01.50 TO 9+70.46	225.00'R	368.96'	93°57'18"
LICHENDALE DR.	9+70.46 TO 11+56.14	175.00R	185.68'	60°47'30"

STREET TREE SCHEDULE				
SYMBOL	QTY.	BOTANICAL AND COMMON NAME	SIZE	COMMENTS
(Symbol)	2419.77 x 2 /10 = 120.98 121 TREES	ACER RUBRUM "OCTOBER GLORY" RED MAPLE	2 1/2"-3" CAL.	40' APART ON PUBLIC R/W
(Symbol)	* SEE NOTE	ACER GINNALA AMUR MAPLE	2 1/2"-3" CAL.	* TO BE SUBSTITUTED FOR RED MAPLES NEAR OR UNDER OVERHEAD WIRES

NOTE: STREET TREE TYPES ARE ONLY A RECOMMENDATION AND MAY BE SUBSTITUTED WITH A COUNTY ACCEPTED EQUIVALENT FROM THE HOWARD COUNTY LANDSCAPE MANUAL. FINANCIAL SURETY FOR THE 121 REQUIRED STREET TREES WILL BE POSTED AS PART OF THE DEVELOPER'S AGREEMENT IN THE AMOUNT OF \$36,300.00 AT FINAL PLAN STAGE.

LANDSCAPING PLANT LIST			
QTY.	KEY	NAME	SIZE
65	(Symbol)	ACER RUBRUM "OCTOBER GLORY" OCTOBER RED MAPLE	2 1/2" - 3" CAL. OR 1.5" OR 1.5" DBH
39	(Symbol)	PIZZA ARMS NORWAY SPRUCE	6'-8" HGT.



SCHEDULE D STORMWATER MANAGEMENT AREA LANDSCAPING			
LINEAR FEET OF PERIMETER	B-1: 90°	B-2: 640'	
NUMBER OF TREES REQUIRED:			
SHADE TREES	18	13	
EVERGREEN TREES	23	16	
CREDIT FOR EXISTING VEGETATION (NO, YES AND X)	NO	NO	
CREDIT FOR OTHER LANDSCAPING (NO, YES AND X)	NO	NO	

SCHEDULE A - PERIMETER LANDSCAPING						
PERIMETER	CATEGORY (PROPERTIES/ROADWAYS)	LANDSCAPE TYPE	LINEAR FEET OF PERIMETER	CREDIT FOR EXISTING VEGETATION (YES, NO, LINEAR FEET) (DESCRIBE BELOW IF NEEDED)	CREDIT FOR WALL, FENCE OR BERM (YES, NO, LINEAR FEET) (DESCRIBE BELOW IF NEEDED)	NUMBER OF PLANTS REQUIRED: SHADE TREES, EVERGREEN TREES, SHRUBS
P-1	ADJACENT TO PERIMETER	A	358.5'	NO	NO	6 - - -
P-2	ADJACENT TO PERIMETER	A	463.3'	YES (100%)	NO	0 - - -
P-3	ADJACENT TO PERIMETER	A	443.31'	NO	NO	7 - - -
P-4	ADJACENT TO PERIMETER	A	270.4'	NO	NO	5 - - -
P-5	ADJACENT TO PERIMETER	A	305.4'	NO	NO	5 - - -
P-6	ADJACENT TO PERIMETER	A	545.9'	NO	NO	9 - - -
P-7	ADJACENT TO PERIMETER	A	490.5'	YES (100%)	NO	0 - - -
P-8	ADJACENT TO PERIMETER	A	394.8'	YES (100%)	NO	0 - - -
P-9	ADJACENT TO PERIMETER	A	908.5'	YES (100%)	NO	0 - - -
P-10	ADJACENT TO PERIMETER	A	245.6'	YES (100%)	NO	0 - - -
P-11	ADJACENT TO PERIMETER	A	926.2'	YES (100%)	NO	0 - - -

PRELIMINARY EQUIVALENT SKETCH PLAN AND LANDSCAPE PLAN  
**PFEFFERKORN OVERLOOK**  
 PHASE II AND III  
 BUILDABLE LOTS 4 - 10, BUILDABLE PRESERVATION PARCEL 'B', NON-BUILDABLE BULK PARCEL 'D', NON-BUILDABLE PRESERVATION PARCELS 'C', 'E' & 'F'  
 (A RESUBDIVISION OF PFEFFERKORN OVERLOOK, LOTS 1 THRU 3 AND BULK PARCEL 'A' PLAT NUMBERS 19596 THRU 19598)

TENTATIVELY APPROVED  
 DEPARTMENT OF PLANNING AND ZONING  
 HOWARD COUNTY

*Mark D'Angelo*  
 PLANNING DIRECTOR

8/20/08  
 DATE

**FISHER, COLLINS & CARTER, INC.**  
 CIVIL ENGINEERING CONSULTANTS & LAND SURVEYORS  
 CENTENNIAL SQUARE OFFICE PARK - 10272 BALTIMORE NATIONAL PARK  
 ELKTON CITY, MARYLAND 21922  
 (410) 431-2000

**Owner And Developer**  
 JAMES W. PFEFFERKORN, ETAL  
 2797 PFEFFERKORN ROAD  
 WEST FRIENDSHIP, MARYLAND 21794-9415  
 410-489-0211

APPROVED FOR PRIVATE WATER AND PRIVATE SEWERAGE SYSTEMS,  
 HOWARD COUNTY HEALTH DEPARTMENT.

*Richard J. Quinn*  
 COUNTY HEALTH OFFICER

8/5/08  
 DATE

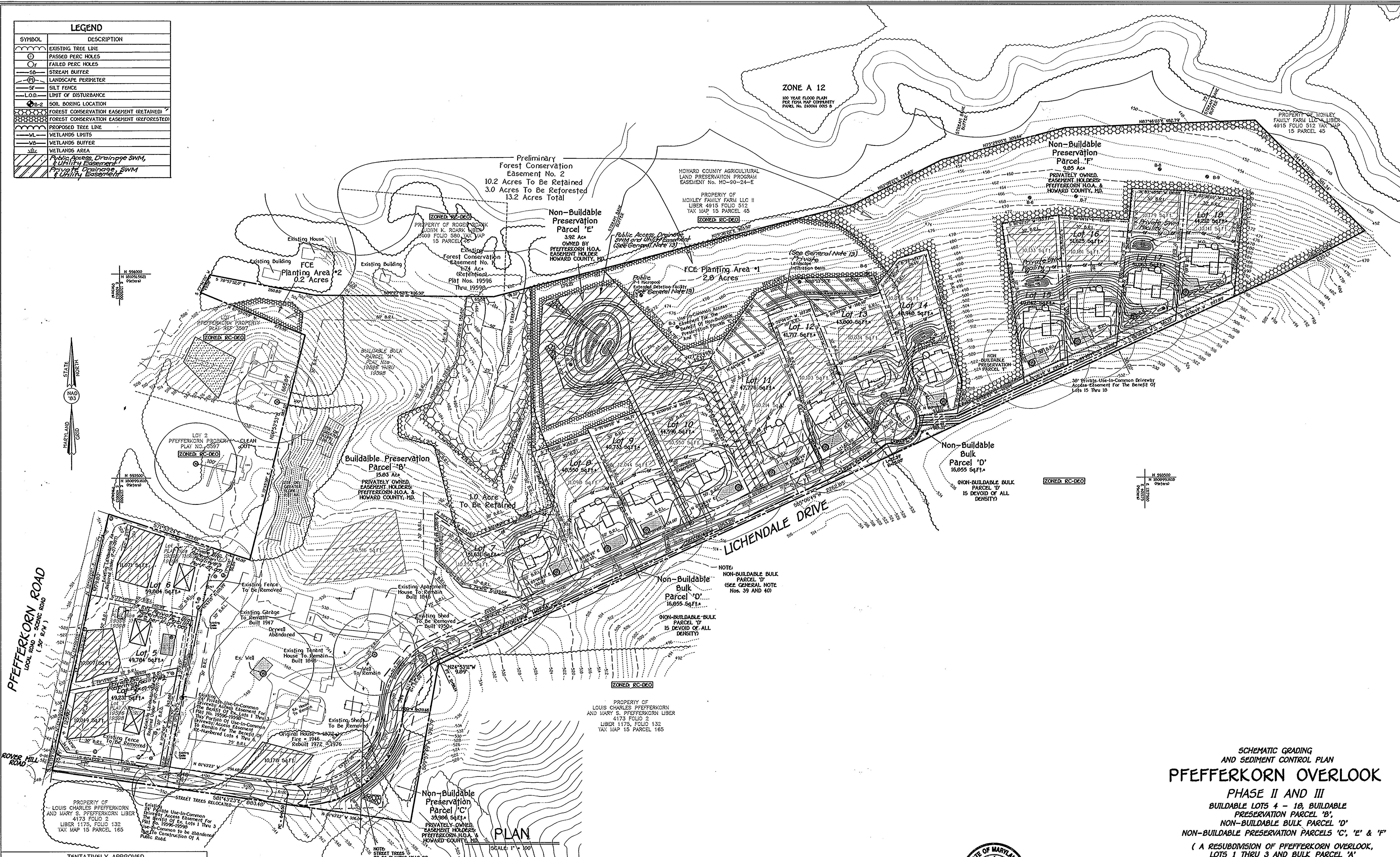
STATE OF MARYLAND  
 PROFESSIONAL ENGINEER

*Terrill A. Fisher, P.E.*  
 TERRILL A. FISHER, P.E. 9757

7/23/08  
 DATE



LEGEND	
SYMBOL	DESCRIPTION
	EXISTING TREE LINE
	PASSED PERC HOLES
	FAILED PERC HOLES
	STREAM BUFFER
	LANDSCAPE PERIMETER
	SILT FENCE
	LIMIT OF DISTURBANCE
	SOIL BORING LOCATION
	FOREST CONSERVATION EASEMENT (RETAINED)
	FOREST CONSERVATION EASEMENT (REFORESTED)
	PROPOSED TREE LINE
	WETLANDS LIMITS
	WETLANDS BUFFER
	WETLANDS AREA
	Public Access, Drainage SWM, & Utility Easement
	Private Drainage, SWM & Utility Easement



**SCHEMATIC GRADING  
AND SEDIMENT CONTROL PLAN**  
**PFEFFERKORN OVERLOOK**  
**PHASE II AND III**  
**BUILDABLE LOTS 4 - 13, BUILDABLE  
PRESERVATION PARCEL 'B',  
NON-BUILDABLE BULK PARCEL 'D'**  
**NON-BUILDABLE PRESERVATION PARCELS 'C', 'E' & 'F'**  
 (A RESUBDIVISION OF PFEFFERKORN OVERLOOK,  
LOTS 1 THRU 3 AND BULK PARCEL 'A'  
PLAT NUMBERS 19596 THRU 19598)

TENTATIVELY APPROVED  
DEPARTMENT OF PLANNING AND ZONING  
HOWARD COUNTY

**FISHER, COLLINS & CARTER, INC.**  
 CIVIL ENGINEERING CONSULTANTS & LAND SURVEYORS  
 CENTRAL SOURCE OFFICE PARK 3022 BALTIMORE NATIONAL PIKE  
 ELKTON CITY, MARYLAND 21821  
 (410) 461-2899

**Owner And Developer**  
 JAMES W. PFEFFERKORN, ETAL  
 2797 PFEFFERKORN ROAD  
 WEST FRIENDSHIP, MARYLAND 21794-9415  
 410-489-0211

APPROVED FOR PRIVATE WATER AND PRIVATE SEWERAGE SYSTEMS,  
 HOWARD COUNTY HEALTH DEPARTMENT.  
*Michael J. Cain*  
 COUNTY HEALTH OFFICER  
 8/1/08  
 DATE



7/22/08  
DATE

ZONING: RC-DEO  
 TAX MAP NO. 15 GRID NO. 14 PARCEL NO. 164  
 THIRD ELECTION DISTRICT HOWARD COUNTY, MARYLAND  
 DATE: JULY 23, 2008

F-07-007 SHEET 3 OF 4

SP-08-009

1310003(05/04)dwg(05/04)-3001 Support Plan Lots 5-13.dwg, 7/22/2008 9:00:29 AM, 1:1



