

GENERAL NOTES

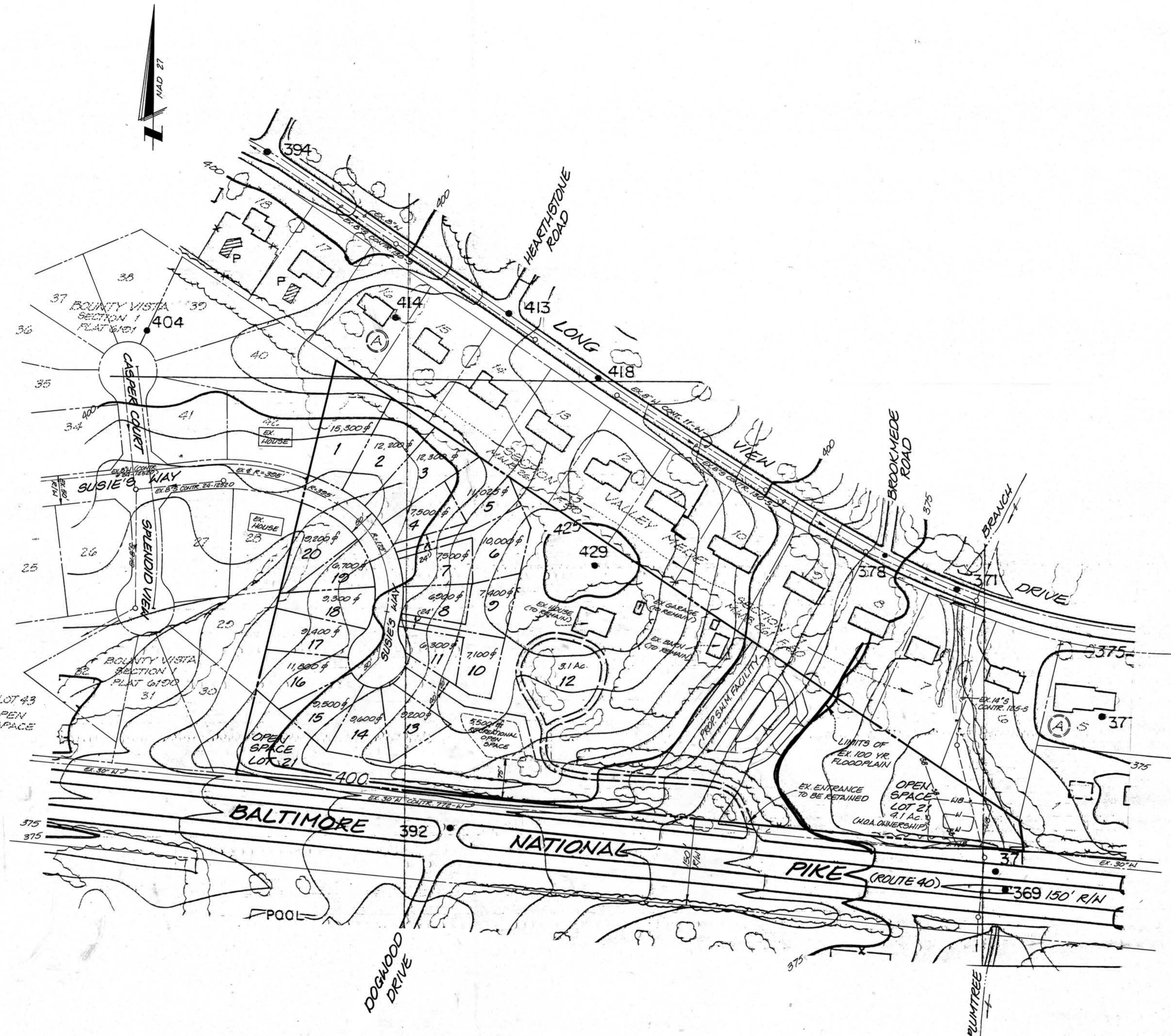
- Existing Zoning: R-ED per 10/93 Comprehensive Rezoning
 - Site Analysis: Gross Area 11.9 Ac.
 - Steep Slopes 0.2 Ac. (per regs. & DPZ policy)
 - Floodplain Area 1.6 Ac.
 - Net Area 10.1 Ac.
 - Open Space Area 4.1 Ac.
 - Area of Lots 1-20 7.2 Ac.
 - Area of New Road R/W 0.6 Ac.
 - Buildable Lots Proposed: 20
Buildable Lots Allowed: 20 (2 per Net Ac.)
Open Space Lots Proposed: 1
 - Open Space Required: 3.0 Ac. (25%)
Open Space Provided: 4.1 Ac. (34%)
Rec. Open Space Required: 5000 sf. (250 sf/lot)
Rec. Open Space Provided: 5500 sf. (within O.S. Lot 21)
 - Public W&S to be utilized. Site is in an existing service area. Ex. W&S shown per County 600' scale index sheets.
 - Site requires posting due to existing houses on Susie's Way.
 - Topography was obtained from County 200' scale drawings. Contour Interval = 5ft. Ex. utility information is from plans.
 - Floodplain shown for Plumtree Branch per HCDPW records.
 - Noise study to be provided at Preliminary Plan. Sufficient room has been set aside for barn.
 - Site shown on Soils Map # 15.
 - No previous file numbers known.
 - Housing Allocations Requested: 19 (existing house is on lot 12)
 - School Region: North
 - This plan is in conformance with the latest Howard County Standards (except as allowed under Vol. 3 - Sect. 1.2.3.b).
- PROPOSED STORM WATER MANAGEMENT
- Quantity Control: 2 & 10 year detention
Quality Control: Sediment Forebay & Wetland Marsh
Hazard Class: A
Ownership: Home Owners Assoc. (HOA)
Maintenance: Structural by HCDPW
Landscape by HOA

LEGEND:

---	---	100 YR. FLOODPLAIN
---	---	LIMITS OF WETLAND
---	---	25' WETLAND BUFFER
---	---	STREAM
---	---	75' STREAM BANK BUFFER

APPROVED PLANNING BOARD OF HOWARD COUNTY
DATE 2-1-95
TENTATIVELY APPROVED DEPT. OF PLANNING AND ZONING OF HOWARD COUNTY
PLANNING DIRECTOR DATE

FOR SOILS, SLOPES & OTHER ENVIRONMENTAL INFORMATION, SEE FOREST STAND DELINEATION PLAN ATTACHED.



GW GUTSCHICK LITTLE & WEBER, P.A.
CIVIL ENGINEERS; SURVEYORS, PLANNERS, LANDSCAPE ARCHITECTS
3909 NATIONAL DRIVE - SUITE 250 - BURTONSVILLE OFFICE PARK - BURTONSVILLE, MD. 20866
TELEPHONE: (301)421-4024 NO. VA. (301)989-2524 BALTO. (301)880-1820 FAX (301)421-4186

DATE	REVISION	BY	APP'R.

PREPARED FOR:
BRICKHOUSE ON THE PIKE, LLC.
% LANDSOURCE DEVELOPMENT CORP
10480 LITTLE PATUMENT PKWY, SUITE 500
COLUMBIA, MARYLAND 21044
ATTN.: CREIGTON L. CATHCART
PHONE: (410) 740-5674

SKETCH PLAN
BRICKHOUSE PROPERTY
2302 ELECTION DISTRICT
HOWARD COUNTY, MARYLAND

DES. CKG	SCALE 1" = 100'	ZONING R-ED	G.L.W. FILE NO. JAD62
DRN. HLC	DATE SEPT. 1994	TAX MAP: 24 PARCEL: 810	SHEET 1 OF 1
CHK. CKG			

S.95.02