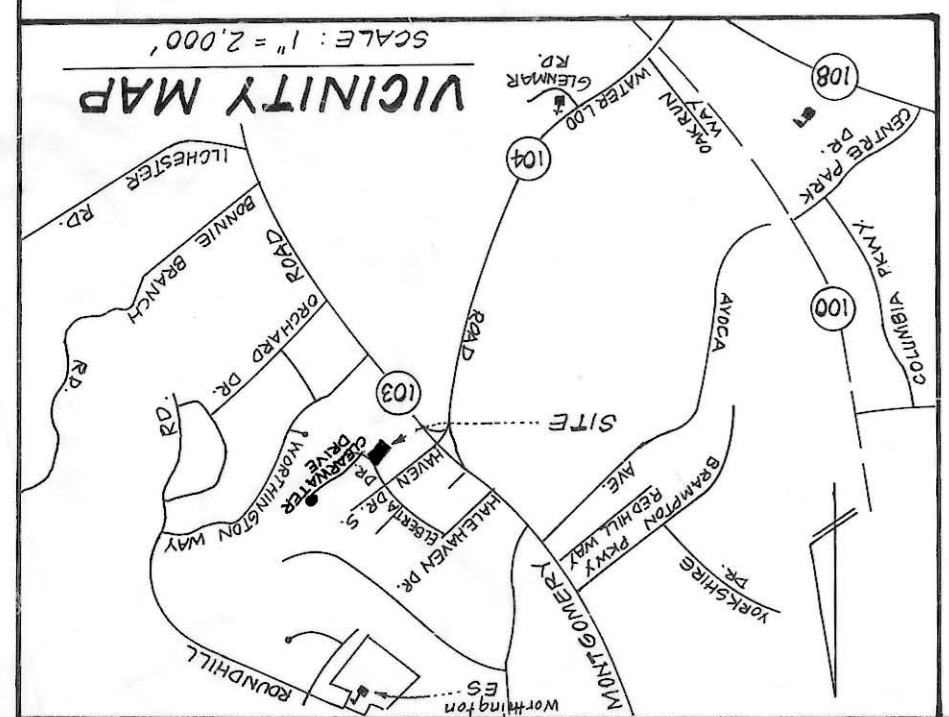
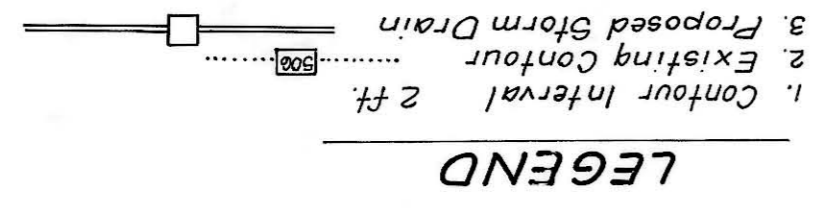
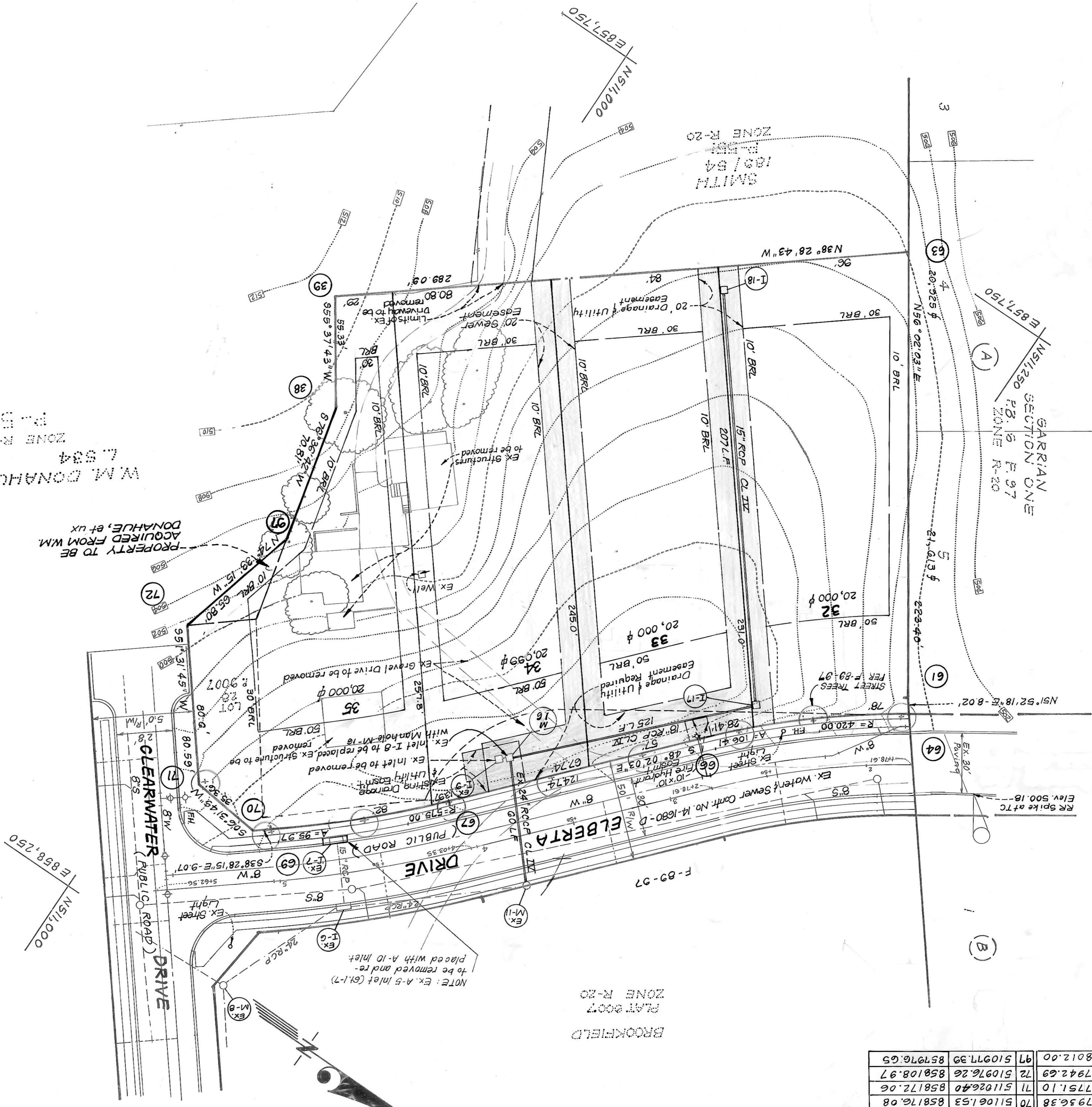


N ^o	North	East	N ^o	North	East
38	510974.39	857976.05	67	511138.45	858104.75
39	510946.15	857930.98	68	511068.63	858170.44
61	511297.28	857956.38	70	511061.53	858176.08
63	511172.47	857751.10	71	511026.40	858172.06
64	511302.23	857942.69	72	510976.26	858108.97
66	511221.86	858012.00	97	510971.39	857976.65

COORDINATE TABLE



SITE ANALYSIS:

R-20

- Zone: R-20
- Unit Type Proposed: Single Family Detached
- Tract Area: 1.839 ± ac
- No. of Lots Proposed: 4
- Area of Residential Lots: 1.839 ± ac
- Roadway Dedication: 0
- Open Space Required: 0.1103 ac
- Open Space Provided: 0
- Minimum Lot Size: 20,000 sq

GENERAL NOTES:

- Public Water & Sewer Systems to be utilized.
- Property shown is located on Tax Map # 31 Parcel # 551
- Soils Map # 20.
- Topography was compiled from field survey.
- Settlement & Erosion Control Devices to be provided with the submission of the site development plan.
- Installation of Traffic Control Devices shall be in accordance with the latest edition of the Manual of Uniform Control Devices.
- All existing structures to be removed.
- Based on a Wetland Assessment conducted by Environmental Systems Analysts, Inc., Annapolis, MD, dated November 26, 1983, no wetlands exist on this Parcel.
- Stormwater Management has been provided for in previously approved facility. See Plan F-89-97.
- For street profiles and cross sections see approved plan F-89-97.
- All Roads are public and existing.
- Street trees shall be provided in accordance with Section 16.131.
- All utilities shown as existing were compiled from available records and field survey.
- Waiver of Preliminary Plan and Open Space Requirements has been requested W.P.-90-94 [] Approved [] Denied

DESIGNED	SCALE	DATE
SKETCH PLAN	1" = 30'	Aug. 1990
CYH	1" = 30'	
DRWN		
VLM		
CHECKED		
JLS		
FILE NO.		
89-133-P		

FOR: CHATEAU BUILDERS, INC. #100
885 Columbia 100 Hwy
Columbia, Maryland 21045

7135 MINISTREL WAY • COLUMBIA, MD 21045 • (301) 381-7500 - BALTO. • (301) 621-8100 - WASH.

ENGINEERS • PLANNERS • SURVEYORS

CLARK • FINEBROCK & SACKETT, INC.



DEPT. OF PLANNING AND ZONING OF HOWARD COUNTY
Joseph S. Smith
 12/21/90