

SOILS LEGEND

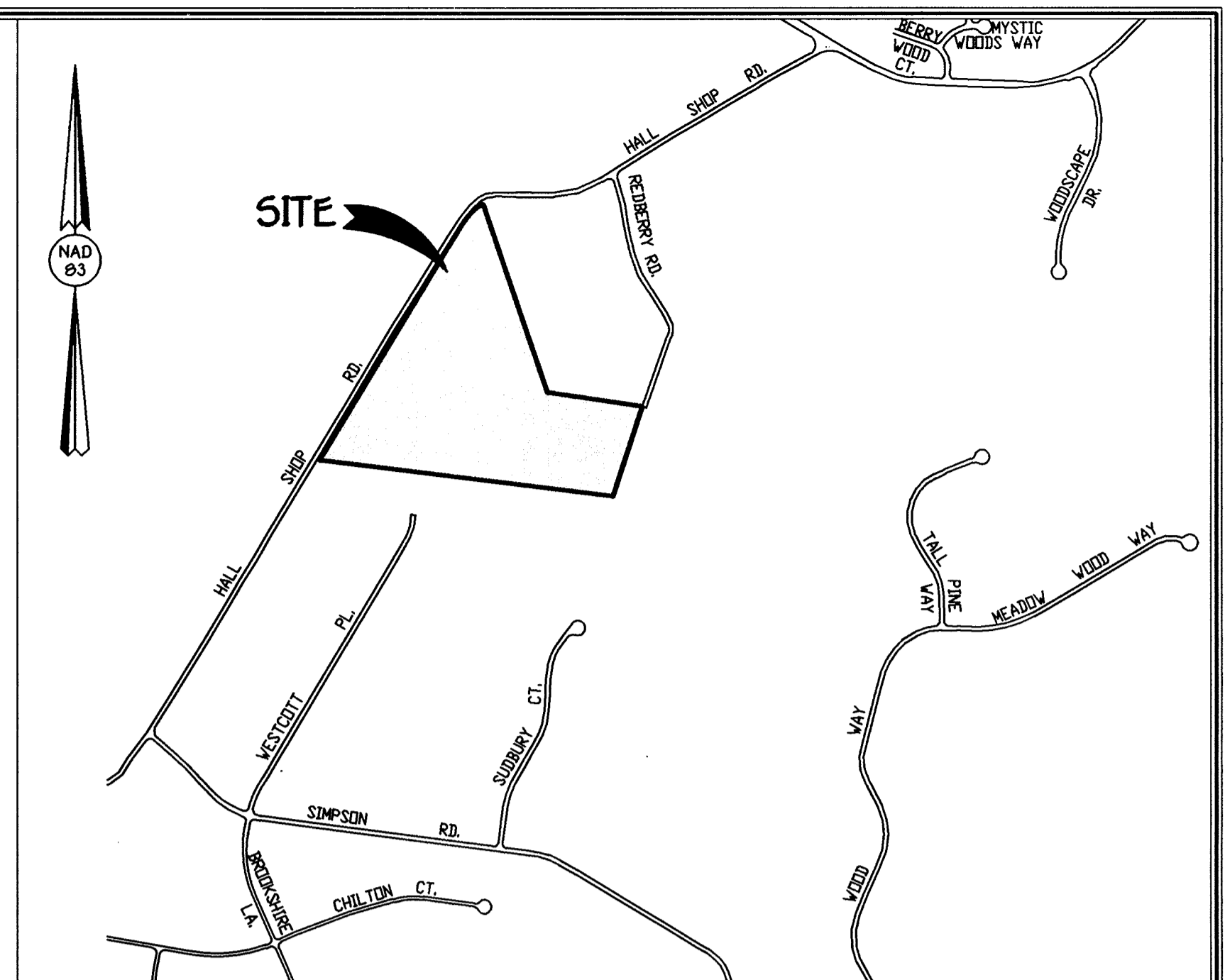
SOIL	NAME	CLASS
**Ba	Baile silt loam	D
CgB2	Chester gravelly silt loam, 3 to 8 percent slopes, moderately eroded	B
CgC2	Chester gravelly silt loam, 8 to 15 percent slopes, moderately eroded	B
ChA	Chester silt loam, 0 to 3 percent slopes	B
ChB2	Chester silt loam, 3 to 8 percent slopes, moderately eroded	B
EkB2	Elk oak silt loam, 3 to 8 percent slopes, moderately eroded	B
GnA	Glenville silt loam, 0 to 3 percent slopes	C
GnB2	Glenville silt loam, 3 to 8 percent slopes, moderately eroded	C
MgB2	Manor gravelly loam, 3 to 8 percent slopes, moderately eroded	B
MgC2	Manor gravelly loam, 8 to 15 percent slopes, moderately eroded	B
MgC3	Manor silty clay loam, 8 to 15 percent slopes, severely eroded	B
MIB2	Manor loam, 3 to 8 percent slopes, moderately eroded	B
MI	Manor loam, 25 to 45 percent slopes	B
MID3	Manor loam, 15 to 25 percent slopes, severely eroded	B

NOTES:
 * Hydric soils and/or contains hydric inclusions
 ** May contain hydric inclusions
 † Generally only within 100-year floodplain areas

SOILS MAP No. 28

WETLAND DATA

WETLAND SYSTEM	COWARDIN CLASSIFICATION	DOMINANT VEGETATION	ACREAGE
A	PEM1A1/R3UB1	JUNCUS EFFUSUS, POLYGONUM SAGITTATUM, ASCLEPIA INCARNATA, FESTUCA ARUNDINACEA, IMPATIENS CAPENSIS, SALIX NIGRA	0.1
B	PFO1A-PEM1A1	ACER RUBRUM, LINDERA BENZOIN, ALNUS SERRULATA, FRAXINUS PENNSYLVANICA, SALIX NIGRA / JUNCUS EFFUSUS, IMPATIENS CAPENSIS, POLYGONUM SAGITTATUM	0.26



VICINITY MAP
SCALE: 1" = 1200'

FOREST STAND DATA

KEY	COMMUNITY TYPE	ACREAGE (NTA)	DOMINANT VEGETATION	GENERAL CONDITION	PRIORITY ACREAGE
F1	EARLY SUCCESSIONAL	*5.7	ROBINIA PSEUDO-ACACIA, PRUNUS SEROTINA, ACER RUBRUM, LIRIODENDRON TULIPIFERA, NYSSA SYRATICA, LINDERA BENZOIN, ROSA MULTIFLORA	POOR	14+ STREAM/BUFFERS
F1v				FAIR	

SEE ACCOMPANYING REPORT FOR COMPLETE STAND DESCRIPTION
 * THIS AREA EXCLUDES 0.8 ACRES OF FOREST FLOODPLAIN

NOTES:

- NO RARE, THREATENED OR ENDANGERED SPECIES WERE OBSERVED ON THE PROPERTY.
- SURROUNDING LAND USE IS MIXED LOW DENSITY RESIDENTIAL DEVELOPMENT AND AGRICULTURE.
- WETLAND AND FOREST LIMITS SHOWN ON THIS PLAN ARE BASED ON FIELD DELINEATION.
- THERE IS AN EXISTING FLOODPLAIN LOCATED ON SITE AREA- 1.31 AC. OF WHICH 0.8 ACRES ARE FORESTED.

TENTATIVELY APPROVED
 DEPT. OF PLANNING AND ZONING OF
 HOWARD COUNTY

John P. Canoles 3/2/01
 DEPT. PLANNING SUPERVISOR DATE

LEGEND

- EXISTING CONTOURS
- SOILS
- TREE LINE
- WETLANDS
- PERENNIAL STREAM CHANNEL
- WETLAND/STREAM BUFFER
- SPECIMEN TREE (SEE REPORT)

**WETLAND & FOREST STAND DELINEATION
 HALL SHOP MANOR
 LOTS 1 THRU 21 AND
 BUILDABLE PRESERVATION PARCEL 'A'
 (IGLEHART PROPERTY)**

TAX MAP No. 41 PARCEL No. 138
 FIFTH ELECTION DISTRICT
 HOWARD COUNTY, MARYLAND
 DATE: JANUARY 30, 2001
 SHEET 2 OF 2

PLAN
 SCALE: 1" = 100'

OWNER
 MILTON IGLEHART, ET. AL.
 12501 ROUTE 216
 HIGHLAND, MARYLAND 20777

DEVELOPER
 LAND DESIGN AND DEVELOPMENT, INC.
 8000 MAIN STREET
 ELLICOTT CITY, MARYLAND 21042

FISHER, COLLINS & CARTER, INC.
 CIVIL ENGINEERING CONSULTANTS & LAND SURVEYORS
 CENTENNIAL SQUARE OFFICE PARK - 10272 BALTIMORE NATIONAL FREE
 ELLICOTT CITY, MARYLAND 21042
 4100 481 - 2050

Eco-Science Professionals, Inc.
 CONSULTING ECOLOGISTS

MD DNR Qualified Professional
 USACOE Wetland Delimitator
 Certification # WDCPS000000448
JOHN P. CANOLES

K:\Drawings\3\30710 Iglehart Property Sketch 12-30-00\30710 FOREST STAND DELINEATION.dwg Tue Jan 30 11:53:43 2001 \\mak