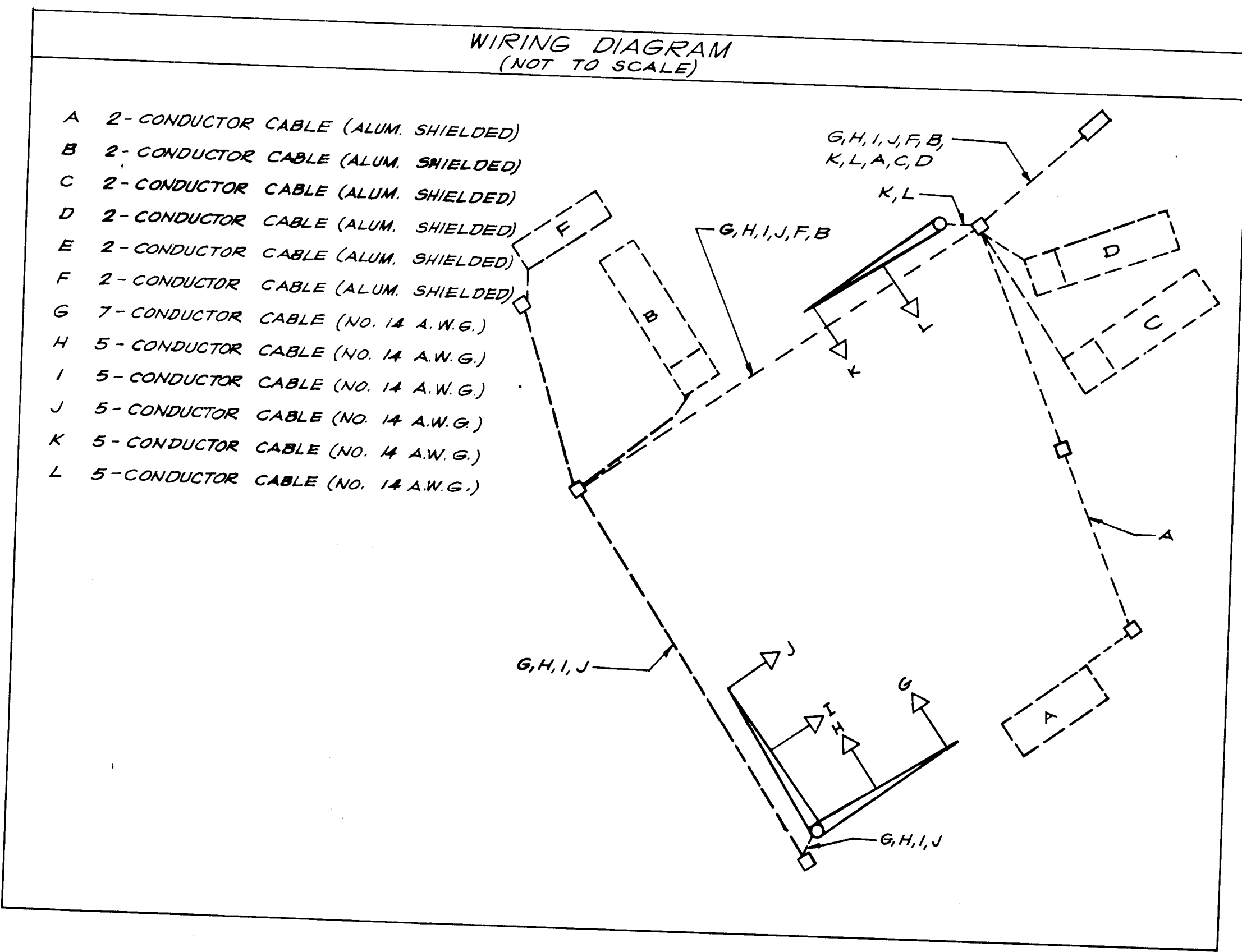
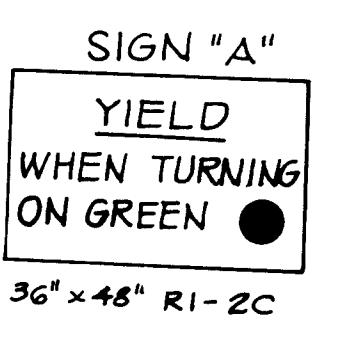
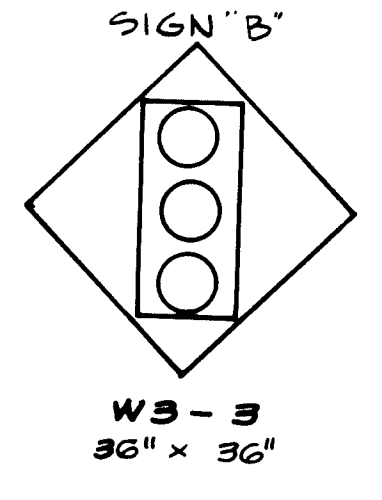


OAKLAND MILLS ROAD

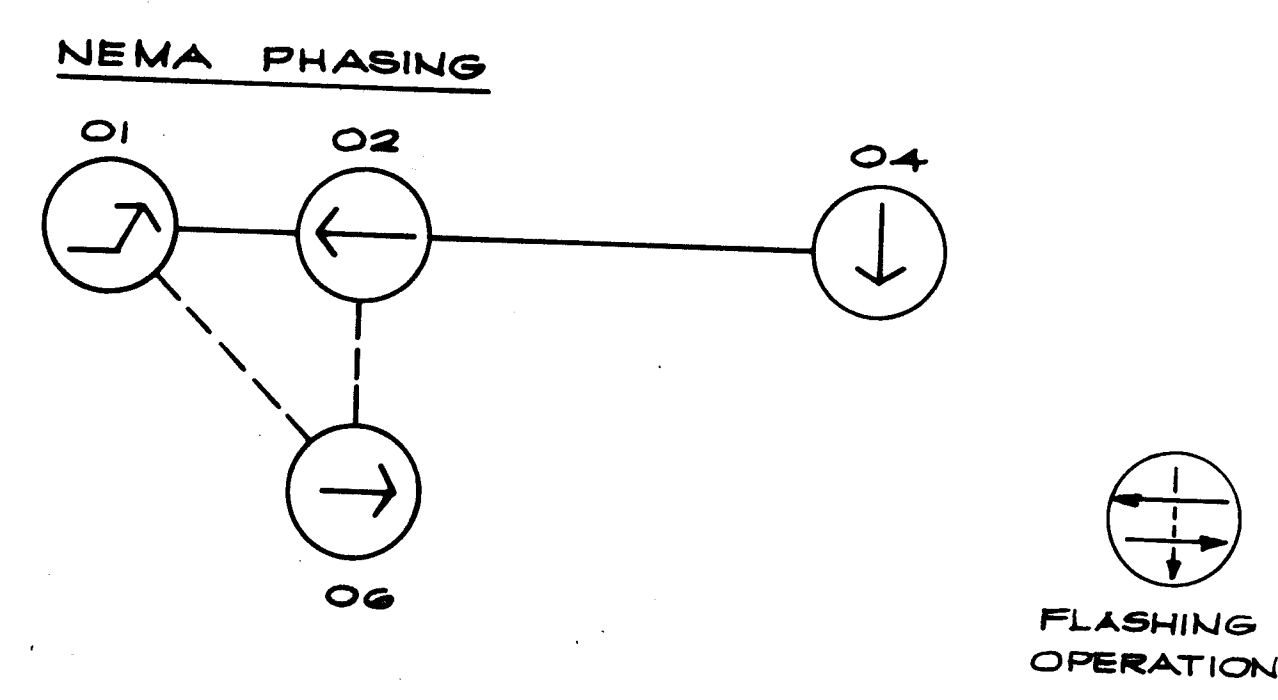
CHRIST EPISCOPAL CHURCH

ROAD

DOBBIN ROAD



PHASE, SEQUENCE & TIMING DIAGRAM	TRAFFIC SIGNAL HEADS						MIN. GREEN	PASSAGE	YELLOW	RED CLEARANCE	MAX. I	MAX. II	SECONDS PER ACTUATION	TIME TO REDUCTION	TIME BEFORE REDUCTION	MIN. GAP	RECALL	MEMORY	
	(R)	(Y)	(G)	(R)	(Y)	(G)													
1	(R)	(Y)	(G)	(R)	(Y)	(G)													
2	(R)	(Y)	(G)	(R)	(Y)	(G)													
3	(R)	(Y)	(G)	(R)	(Y)	(G)													
4	(R)	(Y)	(G)	(R)	(Y)	(G)													
5	(R)	(Y)	(G)	(R)	(Y)	(G)													
6	(R)	(Y)	(G)	(R)	(Y)	(G)													
MIN. GREEN							15	3											
PASSAGE								4											
YELLOW									4										
RED CLEARANCE										35	25	1.5	15	20	3.0	ON	LOCK		
MAX. I																			
MAX. II																			
SECONDS PER ACTUATION																			
TIME TO REDUCTION																			
TIME BEFORE REDUCTION																			
MIN. GAP																			
RECALL																	OFF	NON LOCK	
MEMORY																		OFF	NON LOCK
FLASH OP.	FL/Y	FL/Y	FL/R	FL/R	FL/Y	FL/Y													



1. PHASES ASSOCIATED BY A SOLID LINE WILL NOT OPERATE CONCURRENTLY.
2. PHASES ASSOCIATED BY A DASHED LINE MAY OPERATE CONCURRENTLY.

- LEGEND**
- EXISTING PROPOSED
 - SIGNAL HEAD
 - HANDBOX
 - LOOP DETECTOR
 - CONTROL CABINET W/METER BOX
 - SIGNAL POLE W/MAST ARM
 - CONDUIT

SCALE: 1" = 30'

DEPARTMENT OF PUBLIC WORKS
HOWARD COUNTY, MARYLAND

Director of Public Works
2-27-87

Chief, Bureau of Engineering
2/26/87

ARI ENGINEERING
8150 Leesburg Pike Suite 503
Vienna, Virginia 22180
(703) 442-0202



DES: P.A.P.	
DRN: A.C.M.	
CHK: R.H.P.	
DATE:	
BY NO.	
REVISION	
DATE	

TRAFFIC SIGNAL PLAN
OAKLAND MILLS ROAD
AT DOBBIN ROAD
TF 253

OAKLAND MILLS ROAD
INTERSECTION IMPROVEMENT
CAPITAL PROJECT NO. T-7038
ELECTION DISTRICT NO. 5
HOWARD COUNTY, MARYLAND

SCALE AS SHOWN
SHEET 2 OF 4