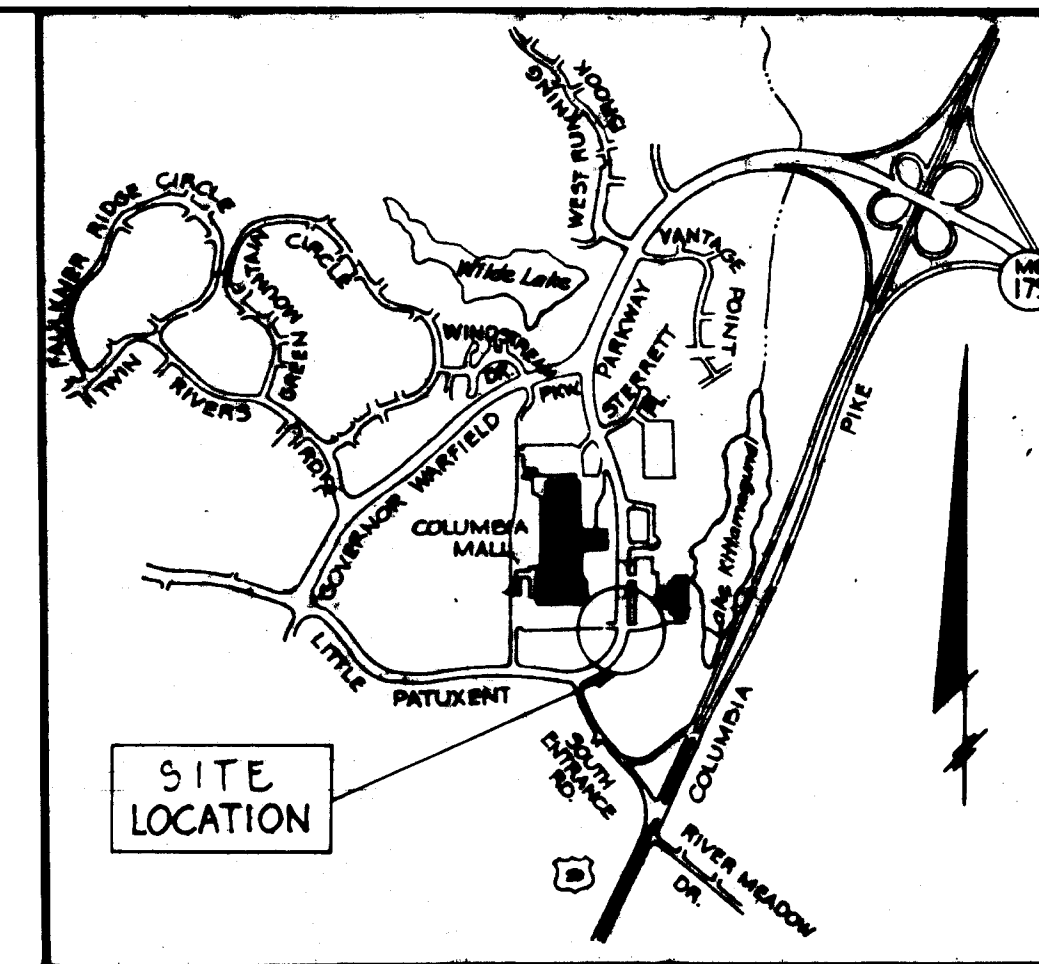
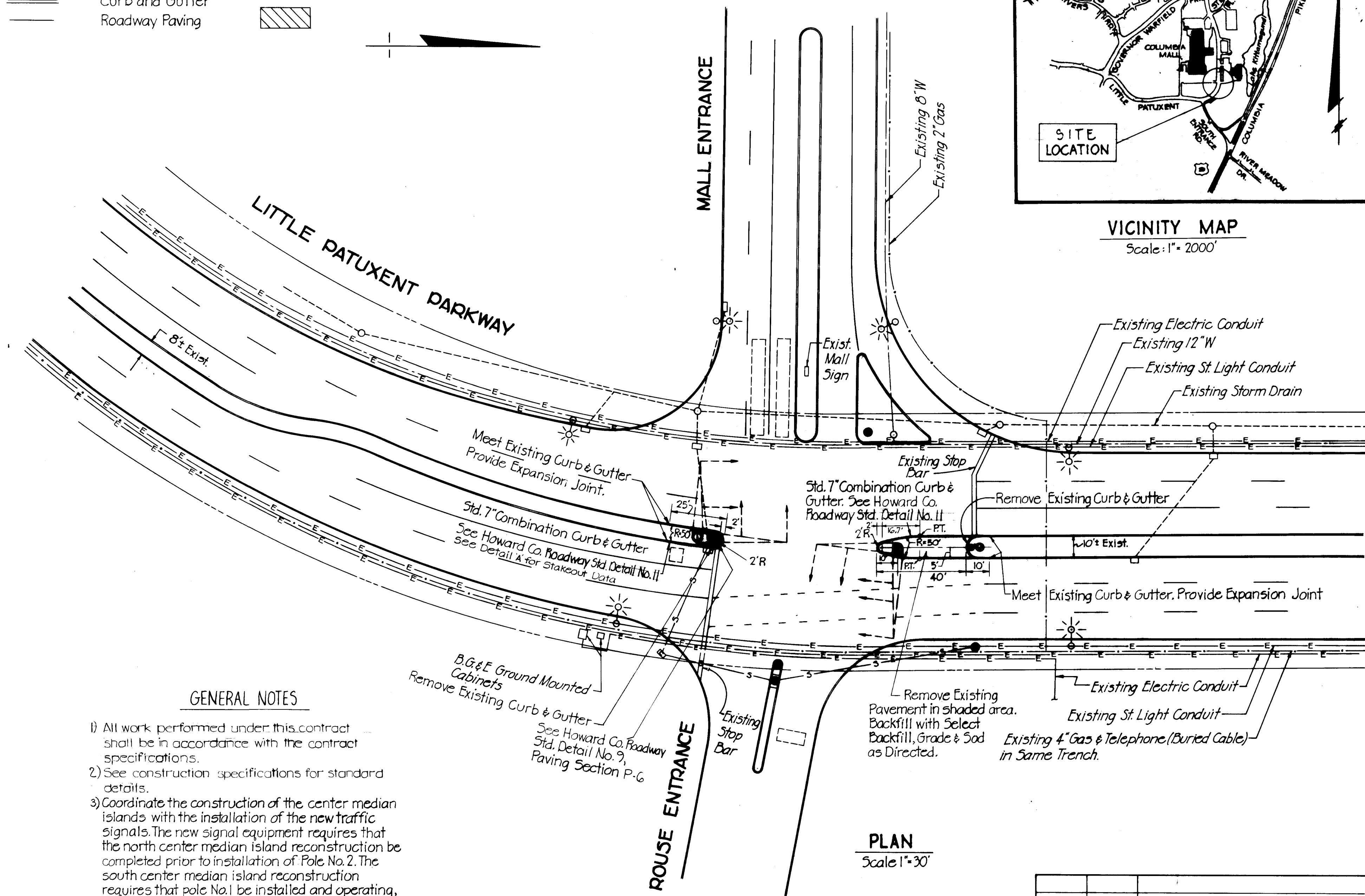


PAVING SYMBOLS

EXISTING	PROPOSED

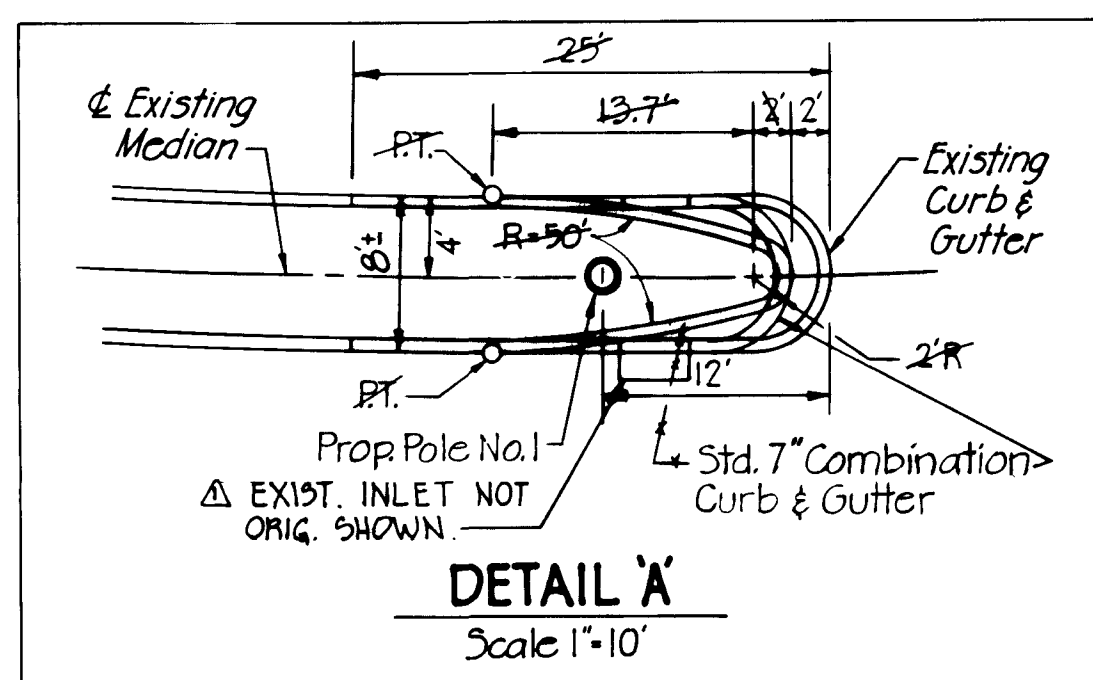


VICINITY MAP  
Scale: 1" = 2000'



GENERAL NOTES

- All work performed under this contract shall be in accordance with the contract specifications.
- See construction specifications for standard details.
- Coordinate the construction of the center median islands with the installation of the new traffic signals. The new signal equipment requires that the north center median island reconstruction be completed prior to installation of Pole No. 2. The south center median island reconstruction requires that pole No. 1 be installed and operating, since the existing signal pole will have to be removed.



QUANTITY SCHEDULE	
Removal of Existing Curb & Gutter	81 L.F.
Removal of Existing Pavement	53 S.Y.
Std. 7" Combination Curb & Gutter	150 L.F.
Bituminous Concrete Surface	2 Ton
Bituminous Concrete Base	11 Ton
8" Crusher Run Sub-Base	25 S.Y.
Select Backfill	15 C.Y.
Topsoil	2 C.Y.
Sod	36 S.Y.

Rev. No.	Rev. Date	Revision Description
Δ 6-20-82		AS BUILT REVISIONS
Owner and Developer		
DEPARTMENT OF PUBLIC WORKS HOWARD COUNTY, MARYLAND		
Project Area		
LITTLE PATUXENT PARKWAY AT INTERSECTION OF ROUSE & MALL ENTRANCE		
Project Title		
INTERSECTION GEOMETRIC MODIFICATIONS CAPITAL PROJECT NO. T-6-7003		

Approved: *Elizabeth Anderson-Cava* 12/16/80  
Chief, Division of Roads, Bridges & Storm Drainage  
Date

Approved: *James S. Branker* 12-16-80  
Chief, Division of Traffic Engineering  
Date

Approved: DEPARTMENT OF PUBLIC WORKS  
*Henry F. Nemejny* 12-16-80  
DIRECTOR OF PUBLIC WORKS  
Date

Approved: *William S. Ryan* 12-16-80  
Chief - Bureau of Engineering  
Date

Designed: D. Cheng Scale: As Noted  
Drawn: T. Stalker Date: Dec. 1980  
Checked: K. Evans Sheet: 4 of 10

Prepared By  
THE WILSON T. BALLARD CO.  
CONSULTING ENGINEERS  
OWINGS MILLS, MARYLAND

AS BUILT 6-20-82