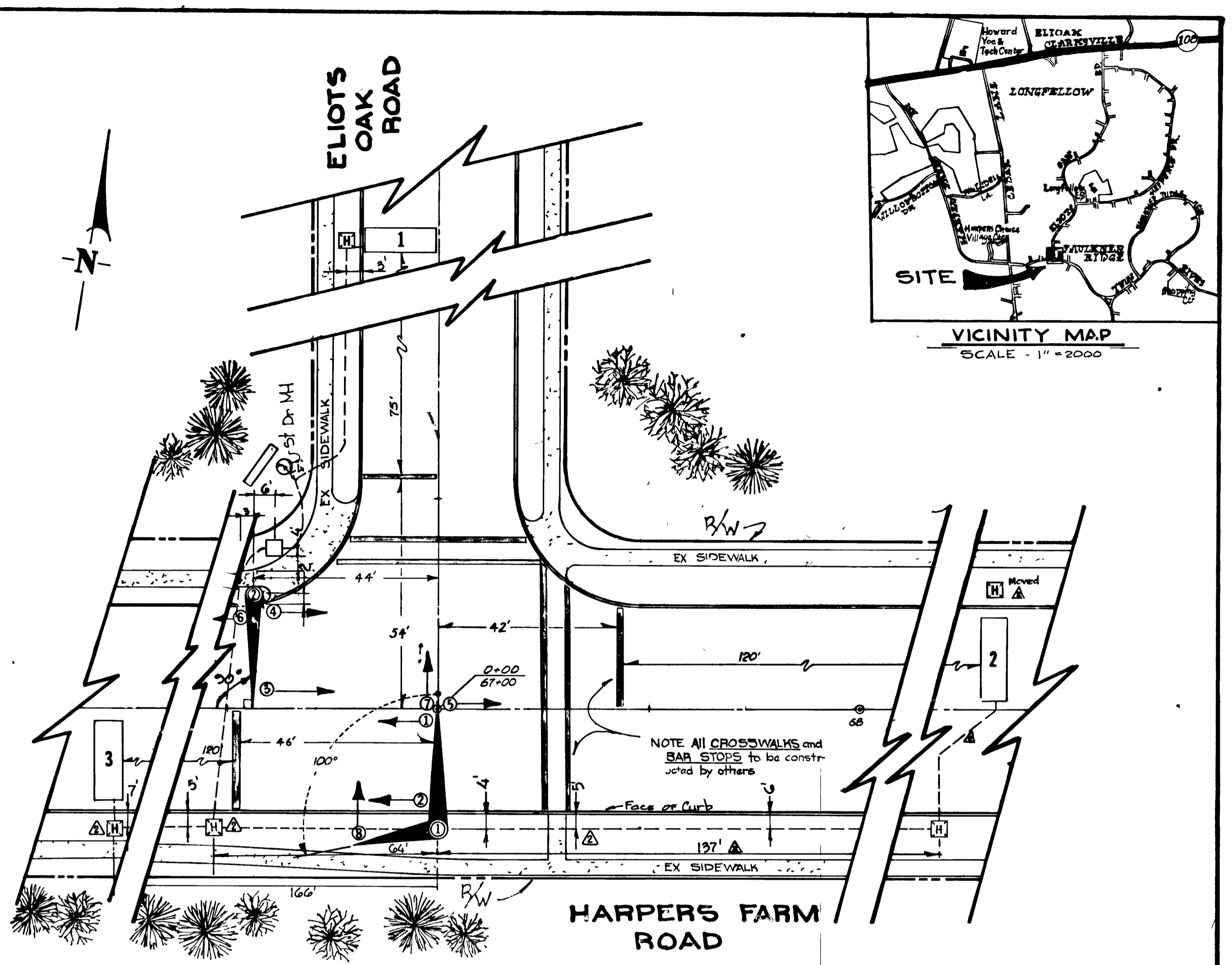


PHASE AND SEQUENCE DIAGRAM	TRAFFIC SIGNAL HEADS		
	1,2,3,4,5,6	7,8	
		(R) 12" (A) (G) 8"	(R) 12" (A) (G) 8"
<b>PHASE A</b>	<b>G</b>	<b>R</b>	
<b>PHASE A CLEARANCE</b>	<b>A</b>	<b>R</b>	
<b>PHASE B</b>	<b>R</b>	<b>G</b>	
<b>PHASE B CLEARANCE</b>	<b>R</b>	<b>A</b>	
<b>FLASH (F)</b>	<b>F/A</b>	<b>F/R</b>	

\* F/ - FLASH;  
- - - FREE MOVEMENT  
- - - YIELD PRIOR TO MOVEMENT

- ### GENERAL NOTES
- 1 Pole # 1 & 2 are to be installed in place of the existing luminaire supports numbered 431 & 426
  - 2 The contractor is not responsible for providing highway markings.
  - 3 The timing of the signal system shall be furnished by the Traffic Engineer (ref 10 03 general specification-)
  - 4 The contractor shall conduct all backfill and cleanup operations as noted in the specifications (ref 22-07 & 22-08) or as directed by the Traffic Engineer
  - 5 The contractor shall comply with all provisions contained within the General Specifications for Installation and Equipment of Traffic Signals for Howard County Department of Public Works, October 1974
  - 6 The existing luminaires shall be removed by the Baltimore Gas & Electric Co. Arrangement for removal shall be the responsibility of Howard County. The existing poles shall be removed by the contractor and delivered to a location specified by the Traffic Engineer.
  - 7 The Contractor shall, after furnishing and installing the two (2) 250 watt Hg luminaires, notify the Baltimore Gas & Electric Co., Mr. Walter W. Kimmel
  - 8 The two (2) luminaires shall not be supplied by the metered power source for the traffic signal system



### EQUIPMENT LIST

- #### A CONTROLLER
- 1 Fully actuated two (2) phase solid state controller expandable to three (3) phase fully actuated with all red pedestrian phase push button actuated
  - 2 All red clearance interval for phase A & phase B
  - 3 Memory and recall for each phase
  - 4 Conflict monitor with solid state signal loading switches
  - 5 Standard police panel (ref 29 35 general specifications) without manual override feature
  - 6 Two (2) loop detector amplifiers
  - 7 Minimum acceptable adjustment range
    - a) Major & minor street initial period and unit extension 2-30
    - b) Major & minor street extension 10-60
    - c) Vehicle clearance interval & all red clearance interval up to 10
- 8 Base mounted control cabinet large enough to accommodate the ultimate three (3) phases. The cabinet shall be finished bronze.

#### B DETECTORS - VEHICLE LOOP

Location in accordance	Phase	Detector N° (see plan)	Dimensions
A		2 & 3	6' x 18'
B		1	6' x 12'

#### C. SIGNAL HEADS STANDARD CAP VISORS

N° (see plan)	Size of indication
Traffic } 1,2,3,4,5,6	12" red, 8" amber, 8" green
signals } 7,8	12" red, 8" amber, 8" green

- #### D POLES
- | N° (see plan) | Description   |
|---------------|---|
| 1             | Combination monolover with two (2) arms 28ft/18ft with 100° angle at separation of luminaire support 28ft arm supports 4-12" signal heads 18ft arm supports 1-12" signal head |
| 2             | Combination monolover with one (1) arm 28ft of luminaire support 28ft arm supports 3-12" signal heads   |
- Pole Finish - Zinc chromate prime coat with exterior bronze finish to be applied in the field
- Note - The luminaires for poles 1 & 2 shall be 250 watt mercury vapor. The contractor shall furnish and install the two (2) luminaires & all related hardware. The luminaires & hardware provided shall be consistent with standard BGE specifications and the following:
- a) It shall be for use with 250 watt Hg Vapor lamp
  - b) It shall have long semi cut off with Type 3 distribution with clear lamp
  - c) It shall be equipped with 120 240V regulated out put ballast connected for 120 v operation with locking type receptacle for photo electric controls
  - d) It shall have a 2" slip fitter mounting and bronze exterior finish

- #### SYMBOLS
- → Signal Head
  - = Vehicle Loop Detector
  - = Hand Box (Junction Box)
  - = Meter Box
  - = Control Cabinet
  - ⊙ = Proposed Steel Pole

PLAN  
SCALE 1"=20'

APPROVED: *William A. Altman* 2/17/75  
DIR. OF PUBLIC WORKS

APPROVED: *W. M. ...* 2/5/75  
CHIEF BUREAU OF HIGHWAYS

APPROVED: *W. O. ...* 2-13-75  
CHIEF BUREAU OF ENGINEERING

APPROVED: *James E. ...*  
CHIEF DIV OF TRAFFIC ENG.

△	As Built	3-2-76
△	Added General Note # 7 & 8	2-5-75
REV. NO	DESCRIPTION	DATE
TRAFFIC SIGNAL CONSTRUCTION PLAN AND EQUIPMENT LIST HOWARD COUNTY MARYLAND		
PROJECT AREA		
HARPER'S FARM ROAD AT ELIOTS OAK ROAD		
SCALE AS SHOWN	DES. K. PAREZO	
DATE OCT 17 1974	DRWN. J. D. H.	
SHEET 1 of 1	CHKD. M. WILHELM	
NO. T-75-10	APPR. J. RIDDLE	