

OWEN BROWN RIDGE RECREATION FACILITIES COLUMBIA, MARYLAND

GENERAL NOTES

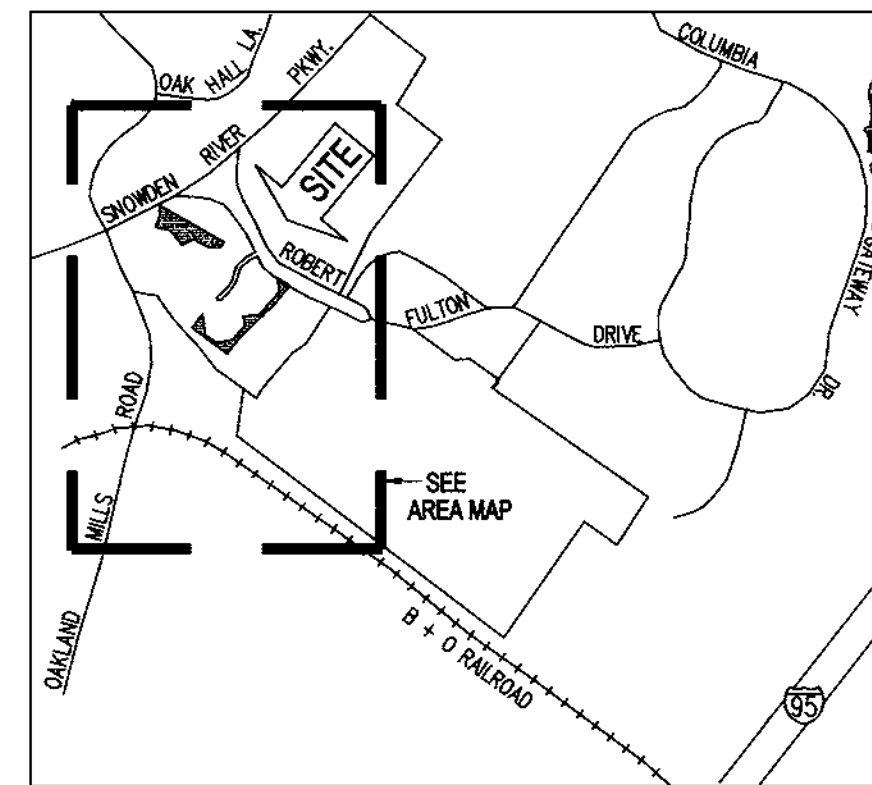
- TOPOGRAPHY ON THESE DRAWINGS ARE BASED ON FIELD RUN SURVEY BY THE RBA GROUP, INC. IN DECEMBER 1997. THE INFORMATION SHOWN OR NOT SHOWN HEREON DOES NOT RELIEVE THE CONTRACTOR OF RESPONSIBILITY FOR PROPER COMPLETION OF GRADING.
- ALL WORK SHALL BE IN ACCORDANCE WITH THE LATEST HOWARD COUNTY STANDARDS AND SPECIFICATIONS.
- DEVIATIONS FROM THESE PLANS AND SPECIFICATIONS WITHOUT PRIOR WRITTEN CONSENT OF THE ENGINEER MAY CAUSE THE WORK TO BE UNACCEPTABLE.
- THE LOCATION OF EXISTING UTILITIES SHOWN ON THESE PLANS ARE FROM THE BEST AVAILABLE INFORMATION. THE CONTRACTOR SHALL TAKE PRECAUTIONS TO PROTECT EXISTING UTILITIES AND MAINTAIN UNINTERRUPTED SERVICE. ANY DAMAGE INCURRED DUE TO CONTRACTOR'S ACTIONS SHALL BE REPAIRED IMMEDIATELY AT THE CONTRACTOR'S EXPENSE.
- THE CONTRACTOR SHALL VERIFY THE LOCATIONS OF ALL UTILITIES WITHIN THE LIMITS OF CONSTRUCTION AND MAINTAIN MINIMUM COVER IN ACCORDANCE WITH THE HOWARD COUNTY DESIGN MANUAL.
 - MIN. COVER OVER WATER MAINS: 3.5'
 - MIN. COVER OVER SANITARY LINES: 2.5' ABOVE INVERT
 - MIN. COVER OVER STORM DRAIN: 18"
 - MIN. COVER OVER GAS LINES: (AS PER BGE REQUIREMENTS)
 - MIN. COVER OVER ELECTRIC LINES: (AS PER BGE REQUIREMENTS)
- THE CONTRACTOR SHALL NOTIFY MISS UTILITY AT 1-800-257-7777 AT LEAST 48 HOURS PRIOR TO ANY EXCAVATION WORK. CONTRACTOR SHALL SUPPLEMENT UTILITY MARKINGS WITH THOSE OF A PRIVATE COMPANY HIRED AND PAID FOR BY THE CONTRACTOR TO INSURE THAT ALL EXISTING UTILITIES ARE CLEARING MARKED PRIOR TO EXCAVATION.
- FAILURE TO MENTION SPECIFICALLY ANY WORK WHICH WOULD NORMALLY BE REQUIRED TO COMPLETE THE PROJECT SHALL NOT RELIEVE THE CONTRACTOR OF HIS RESPONSIBILITY TO PERFORM SUCH WORK.
- FOREST CONSERVATION EASEMENTS AND WETLAND LIMITS WERE DERIVED FROM THE RESPECTIVE RECORD PLATS ESTABLISHED UNDER SUBDIVISION PLANS F-95-138.
- STORMWATER MANAGEMENT OF QUANTITY AND QUALITY FOR THESE SITES IS PROVIDED BY AN EXISTING REGIONAL FACILITY (F-92-1001).
- THE CONTRACTOR SHALL CONTACT THE BUREAU OF ENGINEERING, CONSTRUCTION INSPECTION DIVISION AT (410) 313-1880 48 HOURS IN ADVANCE OF THE COMMENCEMENT OF WORK.
- PRIOR TO THE START OF CONSTRUCTION, THE CONTRACTOR SHALL STAKE OUT ALL CONSTRUCTION AND VERIFY ALL OFFSETS, SETBACKS, EXISTING UTILITY LOCATIONS (HORIZONTAL AND VERTICAL) AND DIMENSIONS.
- THE PAVEMENT DETAILS SHOWN ON THESE PLANS REFLECT THE HOWARD COUNTY MINIMUM STANDARD PAVEMENT SECTIONS AND ARE NOT BASED ON SITE SPECIFIC CONDITIONS. PRIOR TO PAVING, THE FINAL PAVEMENT SECTIONS SHALL BE DETERMINED BY A QUALIFIED GEOTECHNICAL ENGINEER BASED ON IN-SITU TESTING OF THE FINISHED SUBGRADE. ANY PAVEMENT SECTION DETERMINED BY THE GEOTECHNICAL ENGINEER THAT IS LESS THAN THE HOWARD COUNTY MINIMUM STANDARD SHALL FIRST BE APPROVED BY THE HOWARD COUNTY DEPARTMENT OF PUBLIC WORKS. THE TESTING AND GEOTECHNICAL ENGINEER SHALL BE PROVIDED BY THE OWNER.
- ALL FILL SHALL BE ROLLED TO A MINIMUM DEGREE OF COMPACTION TO 95% WITH A MOISTURE CONTENT WITHIN 3% OF OPTIMUM BETWEEN 0 AND 3% OF OPTIMUM AS DETERMINED BY ASTM-D-698. FILL UNDER PAVED AREAS, SHALL BE COMPACTED TO 98% PER ASTM-D-698.
- ALL TREES 12" IN DIAMETER OR GREATER SHALL REMAIN PROTECTED AND UNDAMAGED AT ALL TIMES UNLESS OTHERWISE INDICATED. AN ATTEMPT WILL BE MADE TO PROTECT ALL OTHER TREES THROUGH FIELD ADJUSTMENTS TO THE LAYOUT.
- THE DEVELOPER IS RESPONSIBLE FOR THE ACQUISITION OF ALL EASEMENTS, RIGHTS, OR RIGHTS-OF-WAYS THAT MAY BE REQUIRED TO COMPLETE THE WORK SHOWN HEREON.
- CONTRACTOR IS SOLELY RESPONSIBLE FOR CONSTRUCTION MEANS, METHODS, TECHNIQUES AND SAFETY PRECAUTIONS AND PROGRAMS.
- THE CONTRACTOR SHALL IMPLEMENT AND MAINTAIN SEDIMENT AND EROSION CONTROL MEASURES AND NOTIFY THE HOWARD COUNTY DEPARTMENT OF INSPECTIONS, SEDIMENT CONTROL DIVISION PRIOR TO THE START OF ANY CONSTRUCTION (410) 313-1855. SEE SHEET 5 FOR ADDITIONAL NOTES.
- ALL PROPOSED IMPROVEMENTS WILL BE MAINTAINED BY THE COLUMBIA ASSOCIATION.
- PREVIOUS COUNTY FILE NUMBERS: F-95-138, F-92-1001, SDP 98-13, SP 95-01, SP 95-09.
- ADJUSTMENTS TO THE SEQUENCE OF CONSTRUCTION MUST BE APPROVED BY THE HOWARD COUNTY CONSTRUCTION AND INSPECTION DIVISION PRIOR TO SUCH ADJUSTMENTS.
- ADJUSTMENTS TO THE SEQUENCE OF CONSTRUCTION MUST BE APPROVED BY THE HOWARD COUNTY CONSTRUCTION AND INSPECTION DIVISION PRIOR TO SUCH ADJUSTMENTS.
- ANY DAMAGE TO THE COUNTY'S RIGHT-OF-WAY SHALL BE CORRECTED IMMEDIATELY AT THE CONTRACTOR'S EXPENSE IN ACCORDANCE WITH HOWARD COUNTY SPECIFICATIONS AND STANDARDS.

BENCH MARK

- PIN WITH PLASTIC CAP
ELEV. 358.42
PROPERTY CORNER 2584
PLAT 11958
- 2599
ELEV. 379.79
PROPERTY CORNER 2599
PLAT 11957

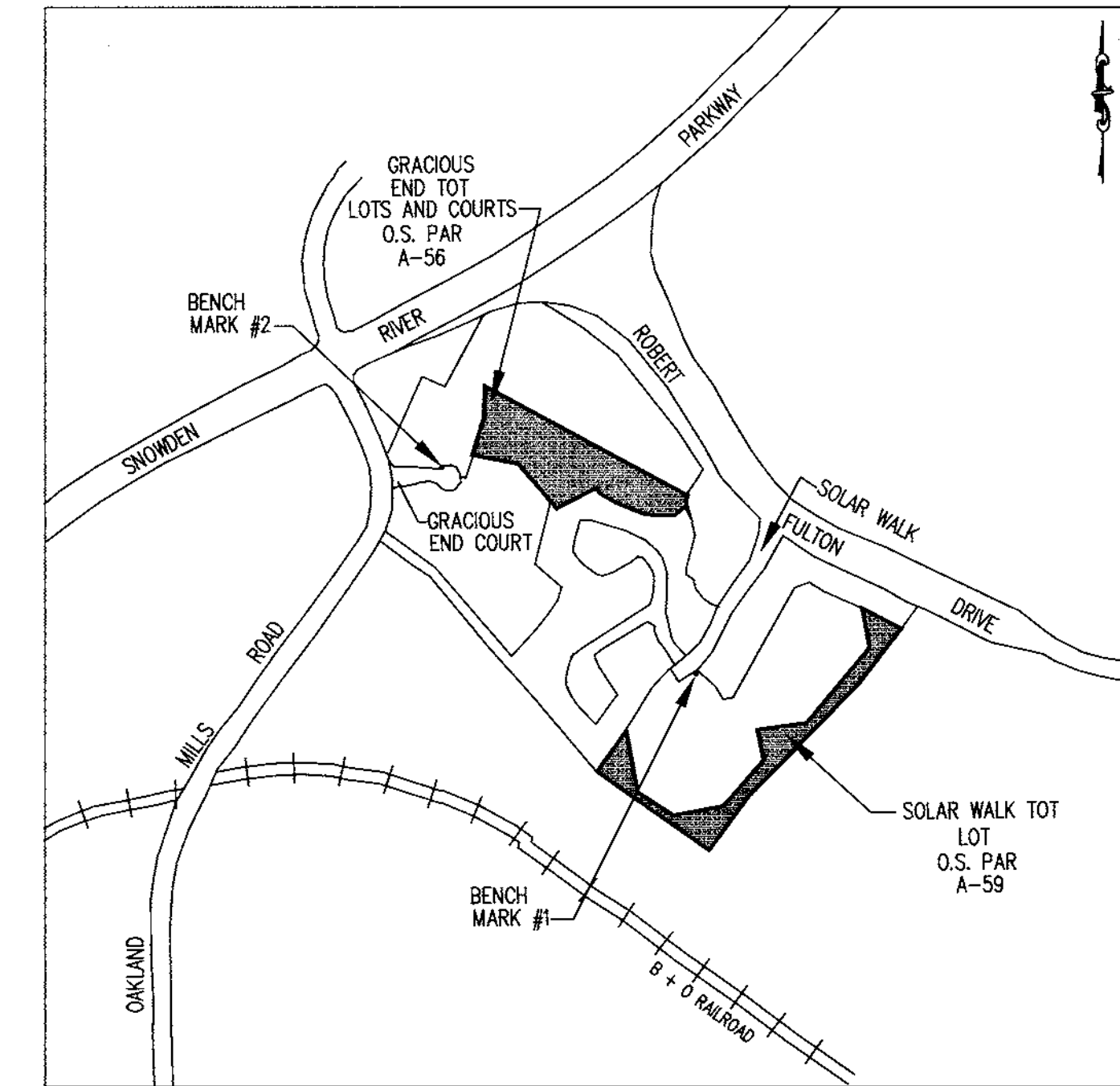
GATEWAY COMMERCE CENTER OPEN SPACE PARCELS A-56 AND A-59

VICINITY MAP



COLUMBIA, MARYLAND
SCALE: 1"=2000'

AREA MAP



COLUMBIA, MARYLAND
SCALE: 1"=600'

SITE DEVELOPMENT PLANS

PREPARED FOR :

COLUMBIA ASSOCIATION
10221 WINCOPIN CIRCLE SUITE 100
COLUMBIA, MD 21044 - 3410

PREPARED BY :

The **RBA** GROUP
ENGINEERS • ARCHITECTS • PLANNERS

7164 COLUMBIA GATEWAY DRIVE
SUITE 205
COLUMBIA, MARYLAND 21046
(410) 312-0966

SITE ANALYSIS

- TOTAL AREA OF PARCELS
 - A-56 332,081 S.F. OR 7.6235 AC.
 - A-59 110,690 S.F. OR 2.5411 AC.
- PROPOSED USE: A-56 TOT LOTS AND ATHLETIC COURTS.
A-59: TOT LOT
- TOTAL LIMITS OF DISTURBANCE:
 - A-56 34,532 S.F.
 - A-59 11,391 S.F.

INDEX

NO.	TITLE	REFERENCE
1	TITLE SHEET	C-1
2	GRACIOUS END TOT LOTS AND COURTS PLAN	C-2
3	SOLAR WALK TOT LOT PLAN	C-3
4	PROFILES AND DETAILS	C-4
5	SITE DETAILS AND EROSION CONTROL NOTES AND DETAILS	C-5
6	EROSION CONTROL DETAILS	C-6
7	DRAINAGE AREA MAP	C-7

ADDRESS CHART	
LOT/PARCEL #	STREET ADDRESS
A-56	9105 Gracious End Court
A-59	7240 Calm Sunset

PERMIT INFORMATION CHART					
SUBDIVISION NAME		SECTION/AREA	LOT/PARCEL #		
GATEWAY COMMERCE CENTER		N/A	A-56 A-59		
PLAT NO.	BLOCK NO.	ZONING	TAX MAP	ELECTION DIST.	CENSUS TRACT
11957 11959	5	RA-15	42	6th	6067.03
WATER CODE			SEWER CODE		
E06			4900000		

APPROVED: DEPARTMENT OF PLANNING AND ZONING	
<i>[Signature]</i> CHIEF, DEVELOPMENT ENGINEERING DIVISION	8/20/99 DATE
<i>[Signature]</i> CHIEF, DIVISION OF LAND DEVELOPMENT	8/23/99 DATE
<i>[Signature]</i> DIRECTOR	8/26/99 DATE

REVISIONS

NO.	DATE	DESCRIPTION
12/21/98	COUNTY COMMENTS	



DATE:	01/27/98
JOB NUMBER:	M12063.00
FILE NUMBER:	2063COV
PLOTTED:	8/04/99
DRAWN BY:	RJ

TITLE SHEET
SHEET C-1
1 of 7

SITE DEVELOPMENT PLANS FOR:
OWEN BROWN RIDGE RECREATION FACILITIES
 COLUMBIA GATEWAY COMMERCE CENTER
 OPEN SPACE PARCELS
 A-56 AND A-59
 HOWARD COUNTY, MARYLAND

PLANS PREPARED FOR:
COLUMBIA ASSOCIATION
 10221 WINCOPIN CIRCLE, SUITE 100
 COLUMBIA, MD 21044-3410
 (410) 381-0383

The RBA Group
ENGINEERS • ARCHITECTS • PLANNERS
7164 Columbia Gateway Drive
Suite 205 Columbia, MD 21046
Phone (410) 312-0966 Fax 312-0967

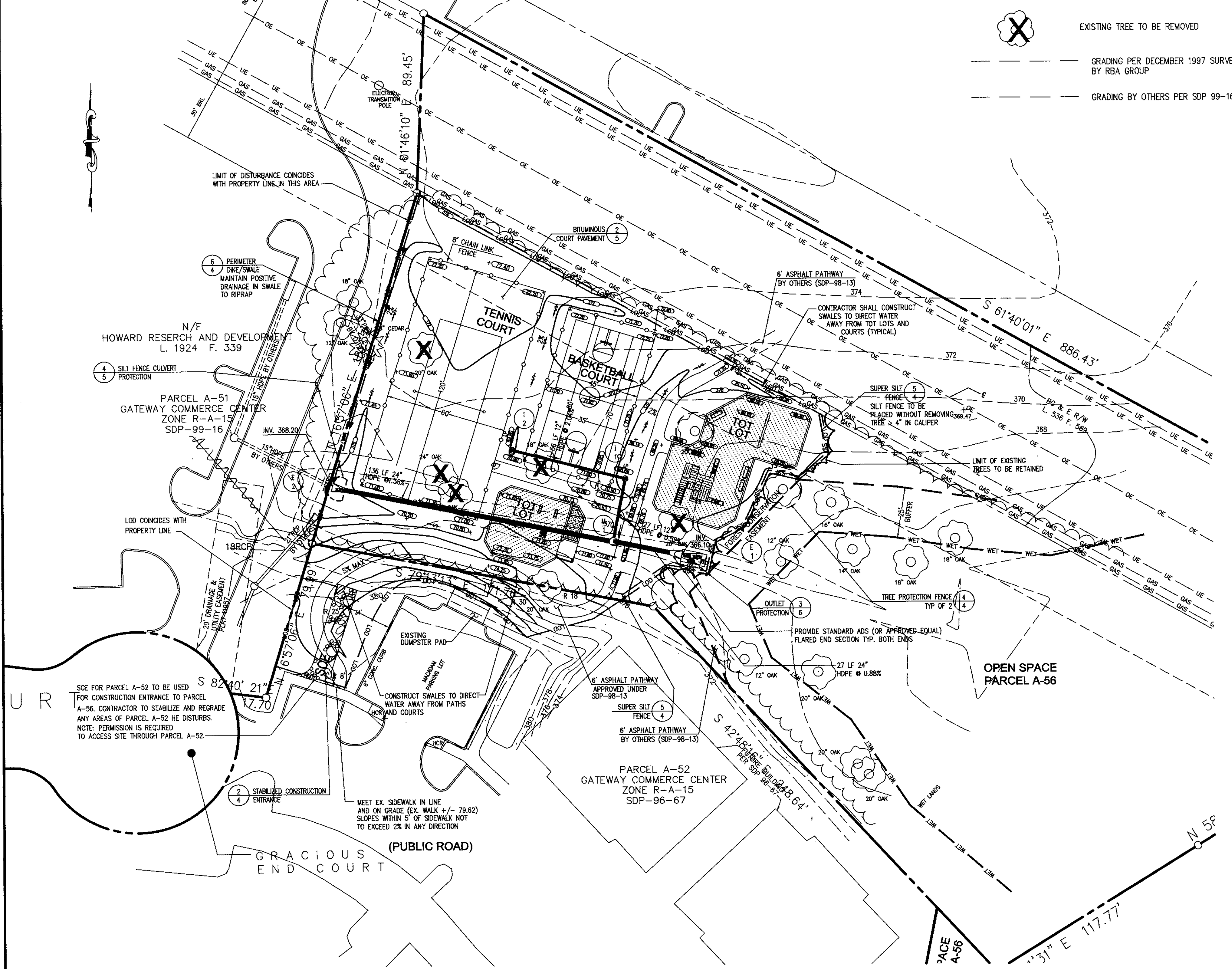
SITE ANALYSIS

TOTAL AREA OF PARCEL A-56 = 332,081 S.F. (7.6235 AC)
 DISTURBED AREA = 34,532 S.F.
 IMPERVIOUS AREA = 12,660 S.F.
 PERVIOUS AREA = 21,872 S.F.
 CUBIC YARD CUT = 187
 CUBIC YARD FILL = 1447
 PERVIOUS AREA TO BE STABILIZED WITH SEED = 20,897 S.F.
 ZONING R-A-15

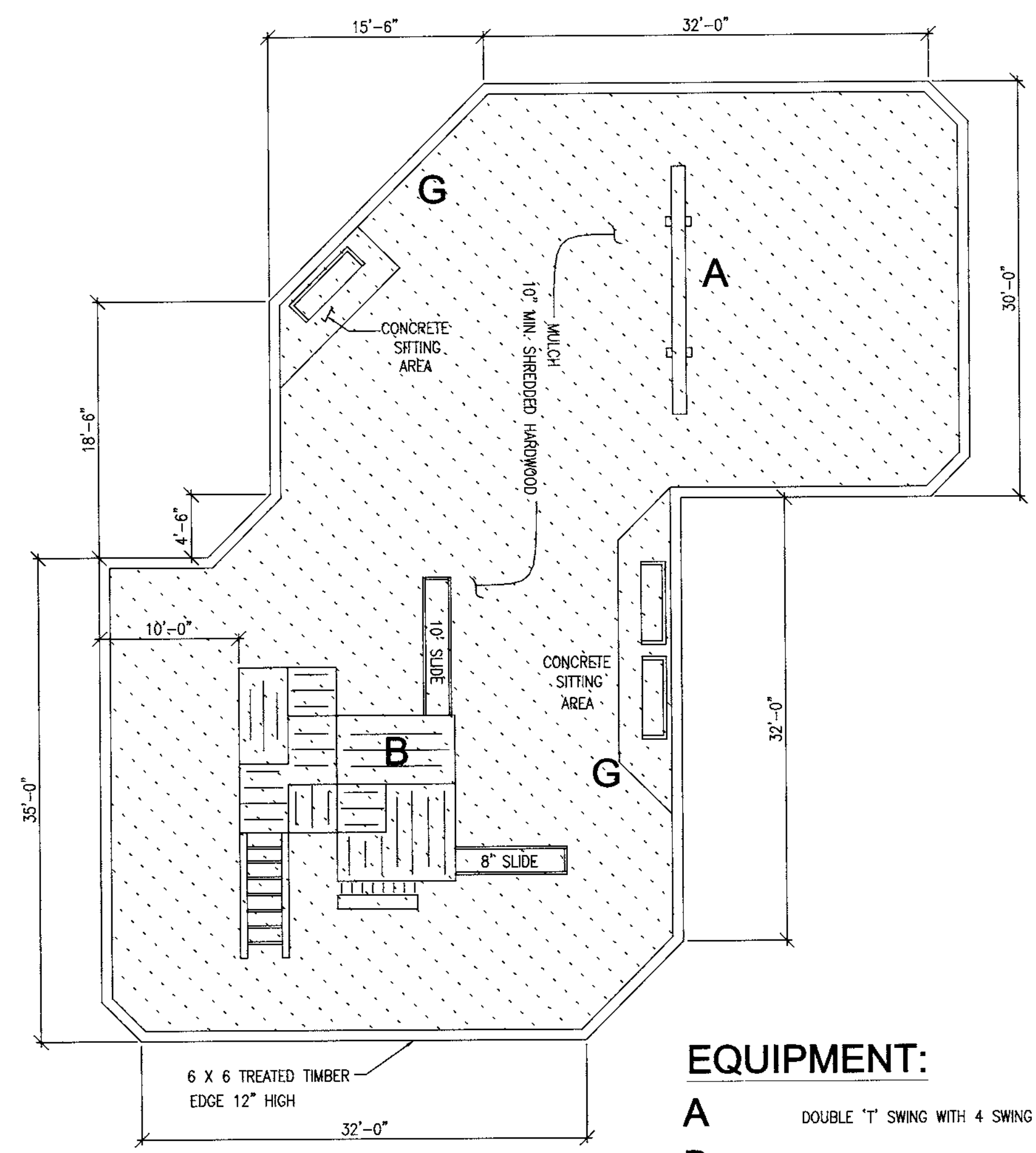
NOTES: THERE ARE NO STREAMS OR STREAM BUFFERS WITHIN THE WORK AREA.

LEGEND

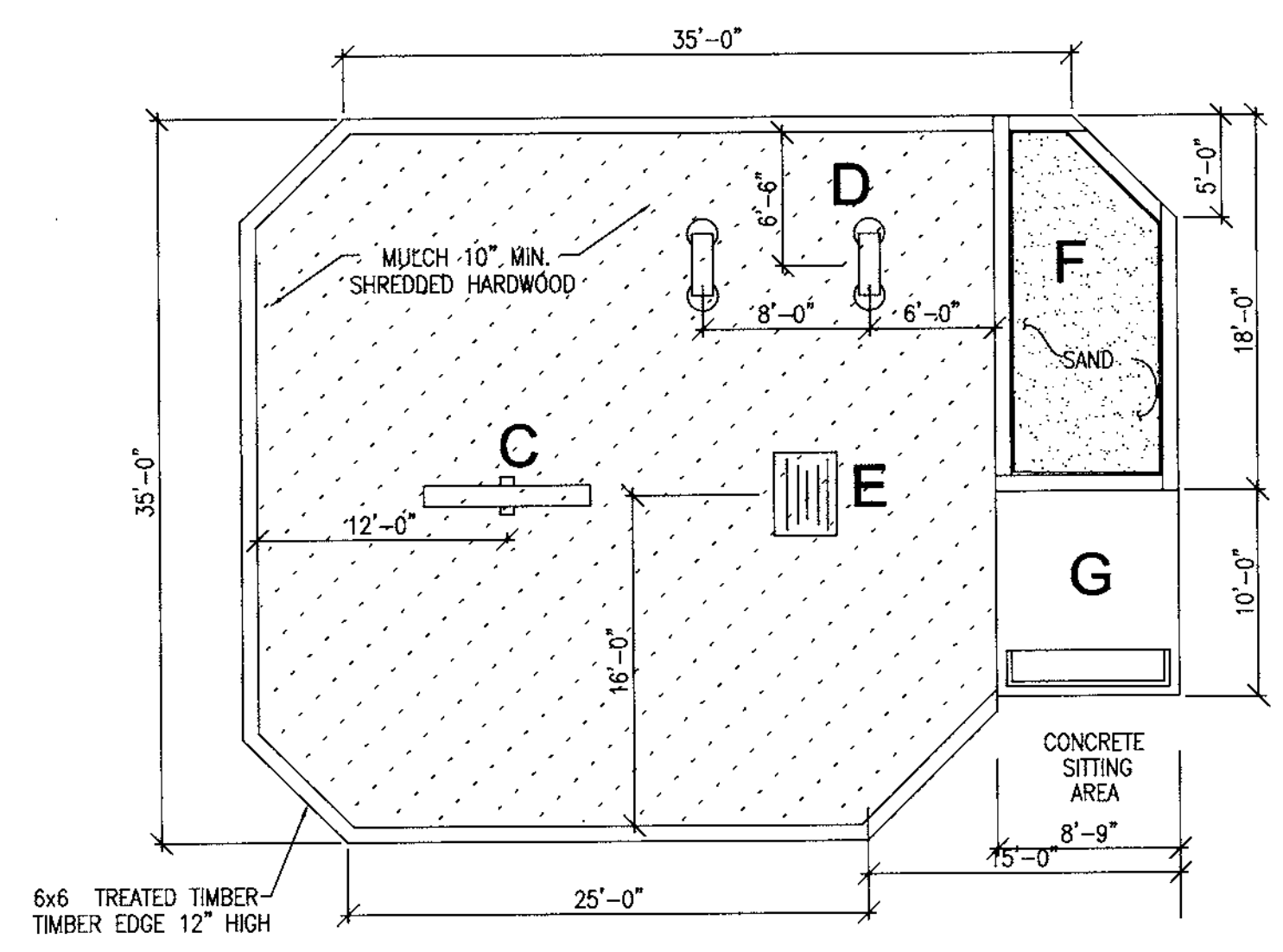
- OE — OE — OVERHEAD ELECTRIC TRANSMISSION LINES
- UE — UE — UNDERGROUND ELECTRIC CABLE
- GAS — GAS — UNDERGROUND GAS MAIN
- WET — WET — LIMIT OF WETLAND
- LOD — LOD — LIMIT OF DISTURBANCE
- SSF — SSF — SUPER SILT FENCE
- — — — — LIMIT OF FOREST CONSERVATION EASEMENT
- (Cloud symbol) — — — — — EXISTING TREE LINE
- (X symbol) — — — — — EXISTING TREE TO BE REMOVED
- (Dashed line) — — — — — GRADING PER DECEMBER 1997 SURVEY BY RBA GROUP
- (Dotted line) — — — — — GRADING BY OTHERS PER SDP 99-16



SITE PLAN
SCALE: 1" = 30'-0"



- EQUIPMENT:**
- A DOUBLE 'T' SWING WITH 4 SWING SEATS
 - B FORT 700 WITH 8' & 10' SLIDES
 - C 'T' SWING WITH 2 INFANT SEATS
 - D (2) SWING SEATS
 - E CRAWL - THROUGH TUBE
 - F SANDBOX
 - G (4) BENCHES



EQUIPMENT LAYOUT PLAN
SCALE: 1/8" = 1'-0"

REVIEWED FOR HOWARD COUNTY S.C.D. AND MEETS TECHNICAL REQUIREMENTS.

John P. Robinson 8/17/99
 DATE

THIS DEVELOPMENT PLAN IS APPROVED FOR SOIL EROSION AND SEDIMENT CONTROL BY THE HOWARD SOIL CONSERVATION DISTRICT.

John P. Robinson 8/17/99
 APPROVED

CERTIFICATION BY THE ENGINEER

I HEREBY CERTIFY THAT THIS PLAN FOR SEDIMENT AND EROSION CONTROL REPRESENTS A PRACTICAL AND WORKABLE PLAN BASED ON MY PERSONAL KNOWLEDGE OF THE SITE CONDITIONS AND THAT IT WAS PREPARED IN ACCORDANCE WITH THE REQUIREMENTS OF THE HOWARD SOIL CONSERVATION DISTRICT.

Mark H. Madlock 8-9-99
 NAME DATE

CERTIFICATION BY THE DEVELOPER/BUILDER

I/WE CERTIFY THAT ALL DEVELOPMENT AND CONSTRUCTION WILL BE DONE ACCORDING TO THIS PLAN OF DEVELOPMENT AND PLAN FOR SEDIMENT AND EROSION CONTROL AND THAT ALL RESPONSIBLE PERSONNEL INVOLVED IN THE CONSTRUCTION PROJECT WILL HAVE A CERTIFICATE OF ATTENDANCE AT A DEPARTMENT OF THE ENVIRONMENT APPROVED TRAINING PROGRAM FOR THE CONTROL OF SEDIMENT AND EROSION BEFORE BEGINNING THE PROJECT. I ALSO AUTHORIZE PERIODIC ON-SITE INSPECTION BY THE HOWARD SOIL CONSERVATION DISTRICT OR THEIR AUTHORIZED AGENTS, AS ARE DEEMED NECESSARY.

John P. Robinson 8/11/99
 NAME DATE

SITE DEVELOPMENT PLANS FOR:
OWEN BROWN RIDGE RECREATION FACILITIES
 COLUMBIA GATEWAY COMMERCE CENTER
 OPEN SPACE PARCELS
 A-56 AND A-59
 HOWARD COUNTY, MARYLAND

PLANS PREPARED FOR:
COLUMBIA ASSOCIATION
 10221 WINCOPIN CIRCLE, SUITE 100
 COLUMBIA, MD 21044-3410
 (410) 381-0383

RBA-Group
 ENGINEERS & ARCHITECTS • PLANNERS
 Suite 206, Columbia Gateway Drive
 Columbia, Maryland 21044
 Phone (410) 381-0383, Fax (410) 381-0387

REVISIONS
 12/21/98 COUNTY AND BCE
 COMMENTS



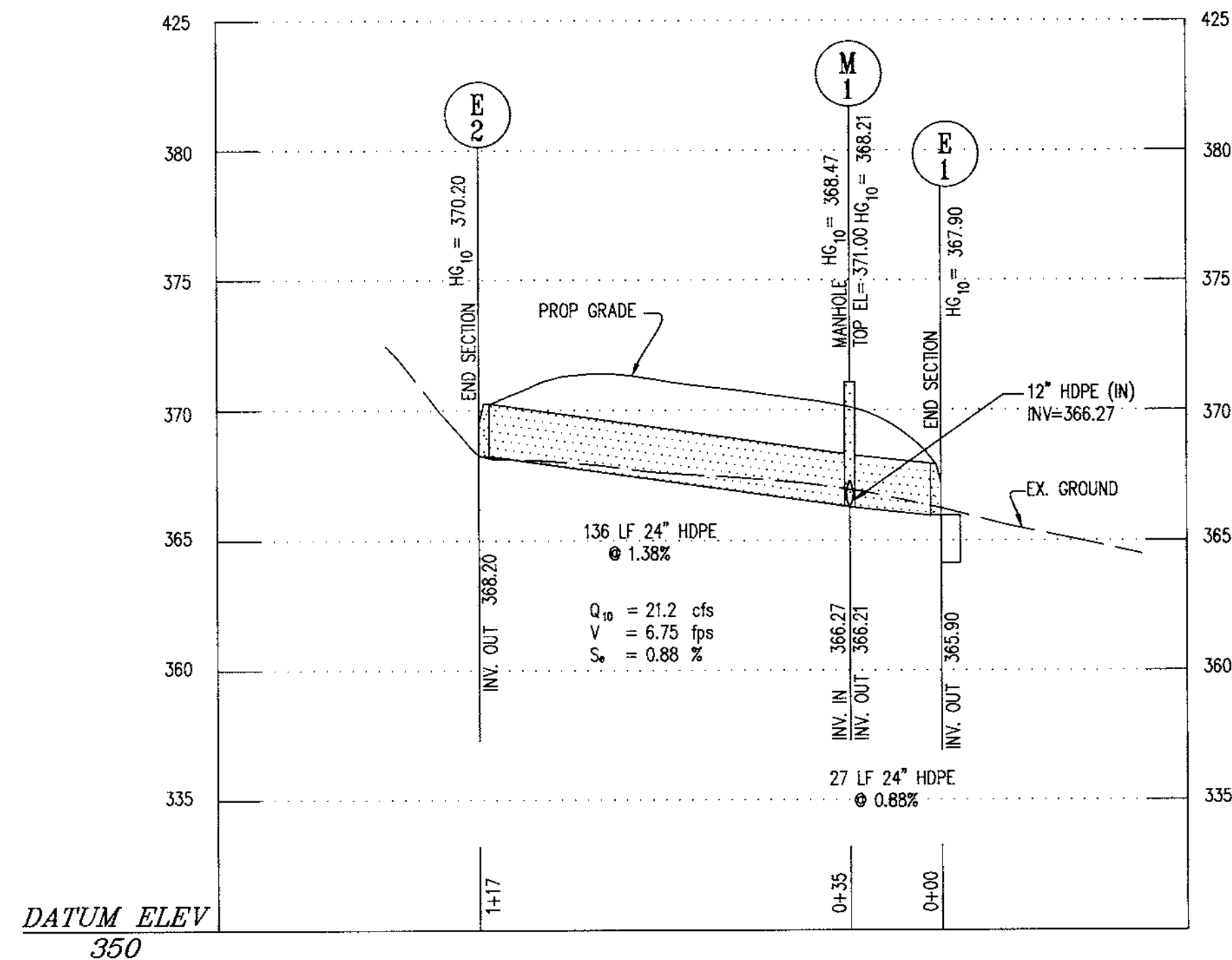
DATE: 01/27/98
 JOB NUMBER: M2063.00
 FILE NUMBER: M2063B.04
 PLOTTED: 08/04/99
 DRAWN BY: RJ
GRACIOUS END TOT LOTS AND COURTS PLAN
 SHEET C-2
 2 of 7

APPROVED: DEPARTMENT OF PLANNING AND ZONING

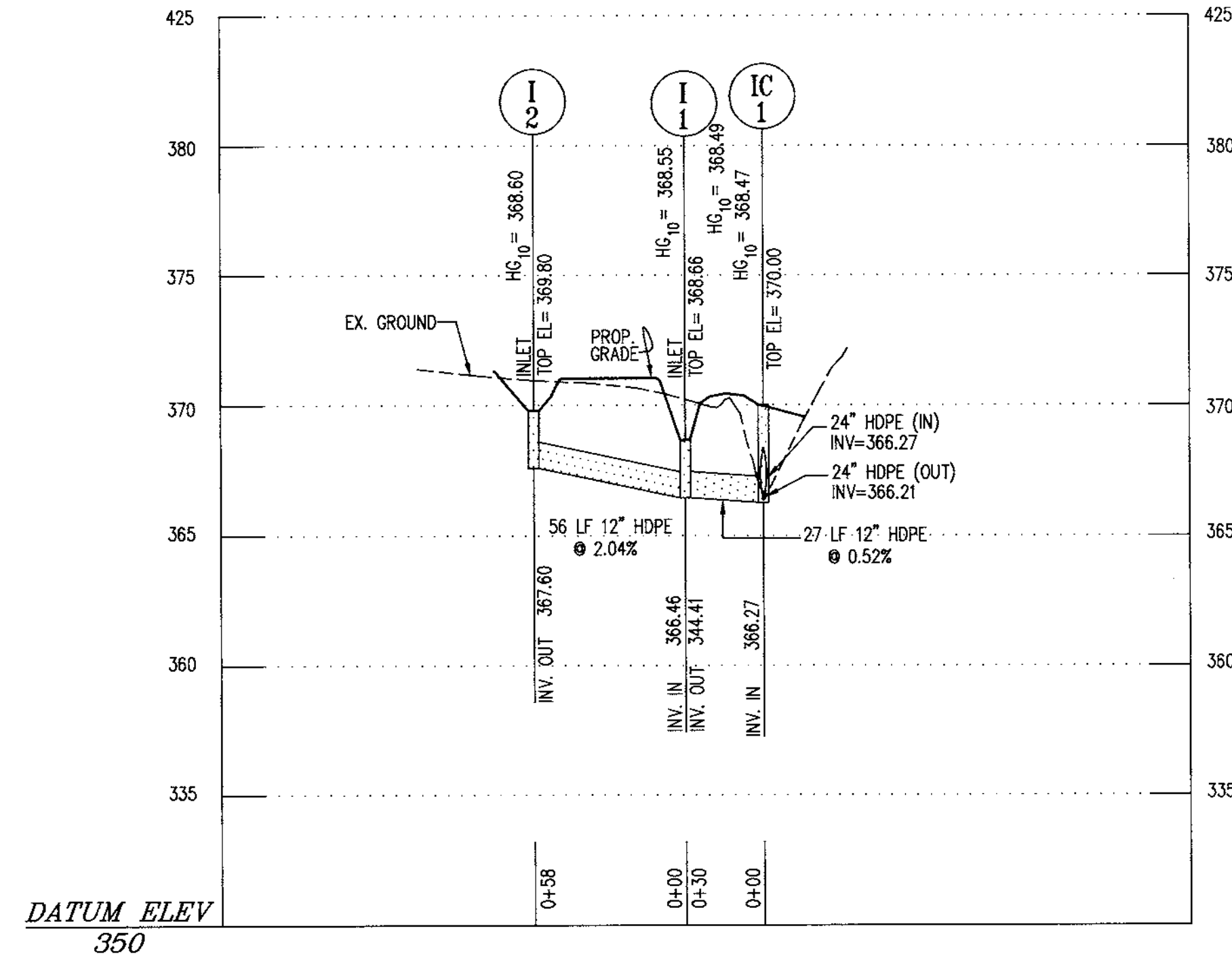
David J. Williams 8/20/99
 CHIEF, DEVELOPMENT ENGINEERING DIVISION MJK DATE

Condy K. Rucker 8/24/99
 CHIEF, DIVISION OF LAND DEVELOPMENT DATE

Paul R. Rucker 8/24/99
 DIRECTOR DATE



1 STORM DRAIN PROFILE
 SCALE: 1" = 50' HORIZ.
 1" = 5' VERT.



2 STORM DRAIN PROFILE
 SCALE: 1" = 50' HORIZ.
 1" = 5' VERT.

PIPE SCHEDULE		
SIZE	TYPE	LINEAR FOOTAGE
12"	HDPE	83 LF
24"	HDPE	163 LF

NOTES

- 1) ALL HDPE PIPE SHALL BE FITTED WITH GASKETS FOR MANUFACTURER'S SPECIFICATION TO PROVIDE WATERTIGHT SEALS.
- 2) ALL PIPE SHALL BE PROVIDED BY ADVANCED DRAINAGE SYSTEM OR EQUAL.

STRUCTURE SCHEDULE						
NUMBER	TYPE	LOCATION		TOP ELEVATION		REMARKS
		STATION	OFFSET	UPPER	LOWER	
I-1	YARD INLET	SEE	PLAN	368.66	368.66	HOWARD COUNTY DPW STD. SD-4.14
I-2	YARD INLET	SEE	PLAN	369.80	369.80	HOWARD COUNTY DPW STD. SD-4.14
M-1	SHALLOW MANHOLE	SEE	PLAN	371.00	371.00	HOWARD COUNTY DPW STD. G-5.05
E-1	END SECTION	SEE	PLAN	INV =	365.90	ADS END SECTION
E-2	END SECTION	SEE	PLAN	INV =	368.20	ADS END SECTION

NOTES

- 1) ALL STRUCTURES ARE HOWARD COUNTY STANDARDS UNLESS NOTED OTHERWISE.
- 2) ELEVATIONS GIVEN ARE TO TOP OF GRATE FOR GRATE INLETS AND TOP OF LID FOR MANHOLES.
- 3) END SECTIONS TO BE SUPPLIED BY ADS OR EQUIVALENT PIPE MANUFACTURER TO BE COMPATIBLE WITH ADS PIPE.

DATUM ELEV
350

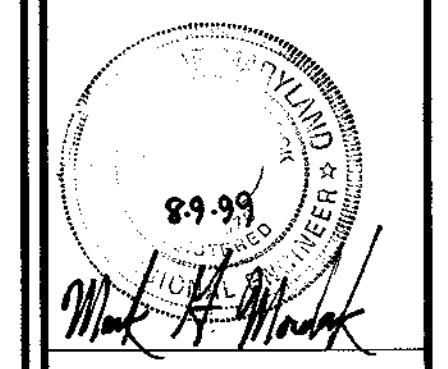
DATUM ELEV
350

SITE DEVELOPMENT PLANS FOR:
OWEN BROWN RIDGE
RECREATION FACILITIES
 COLUMBIA GATEWAY COMMERCE CENTER
 OPEN SPACE PARCELS
 A-56 AND A-59
 HOWARD COUNTY, MARYLAND

PLANS PREPARED FOR:
COLUMBIA ASSOCIATION
 10221 WINCOPIN CIRCLE, SUITE 100
 COLUMBIA, MD 21044-3410
 (410) 381-0383

RBA-
 Group
 ENGINEERS • ARCHITECTS • PLANNERS
 5010
 Suite 505, Columbia, Maryland 21046
 Phone (410) 312-9966, Fax 312-0887

REVISIONS	
12/21/98	COUNTY AND BGE COMMENTS



APPROVED: DEPARTMENT OF PLANNING AND ZONING

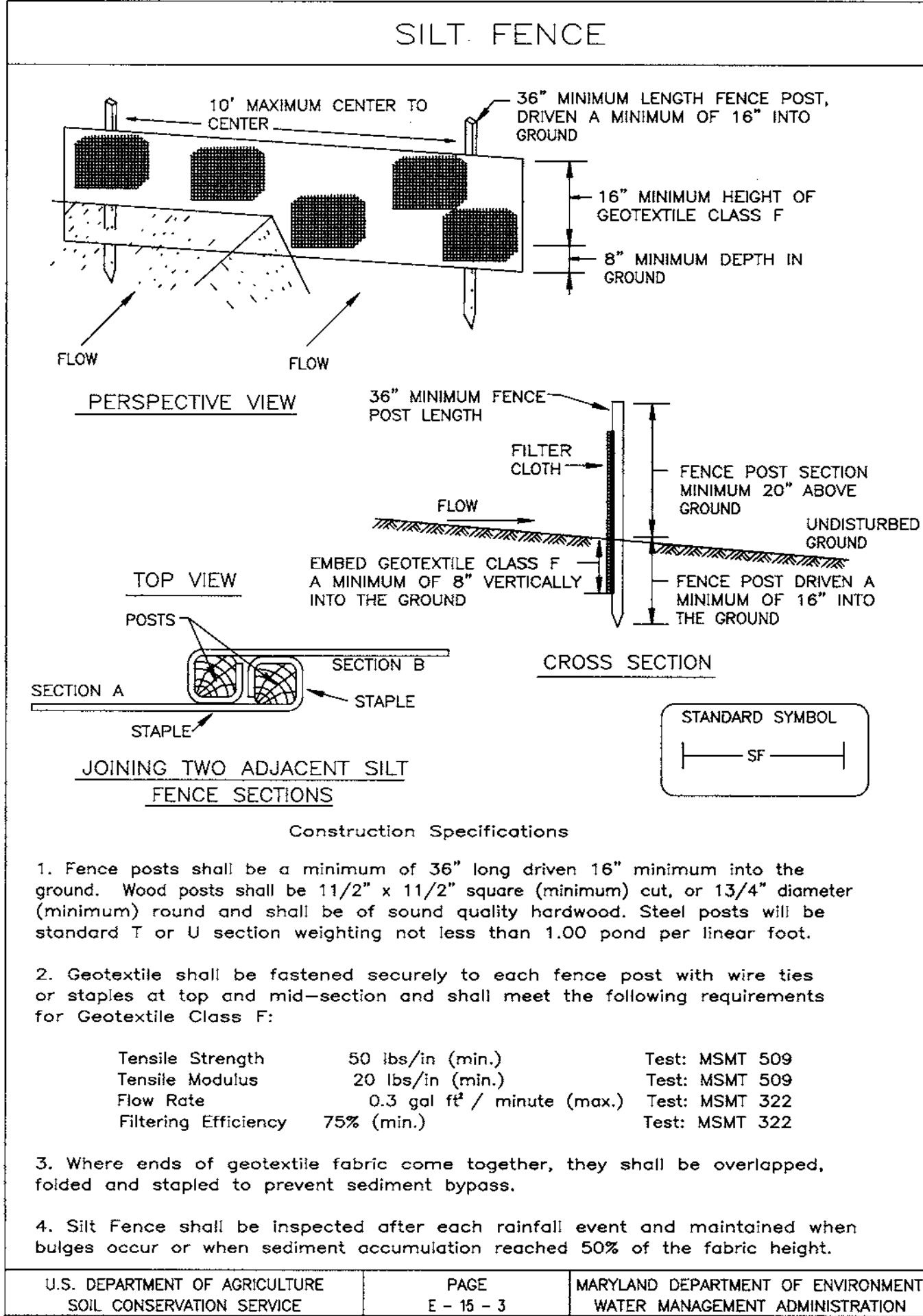
Mark A. Mank 8/24/99
 CHIEF, DEVELOPMENT ENGINEERING DIVISION MKZ DATE

Cinda Hammit 8/24/99
 CHIEF, DIVISION OF LAND DEVELOPMENT DATE

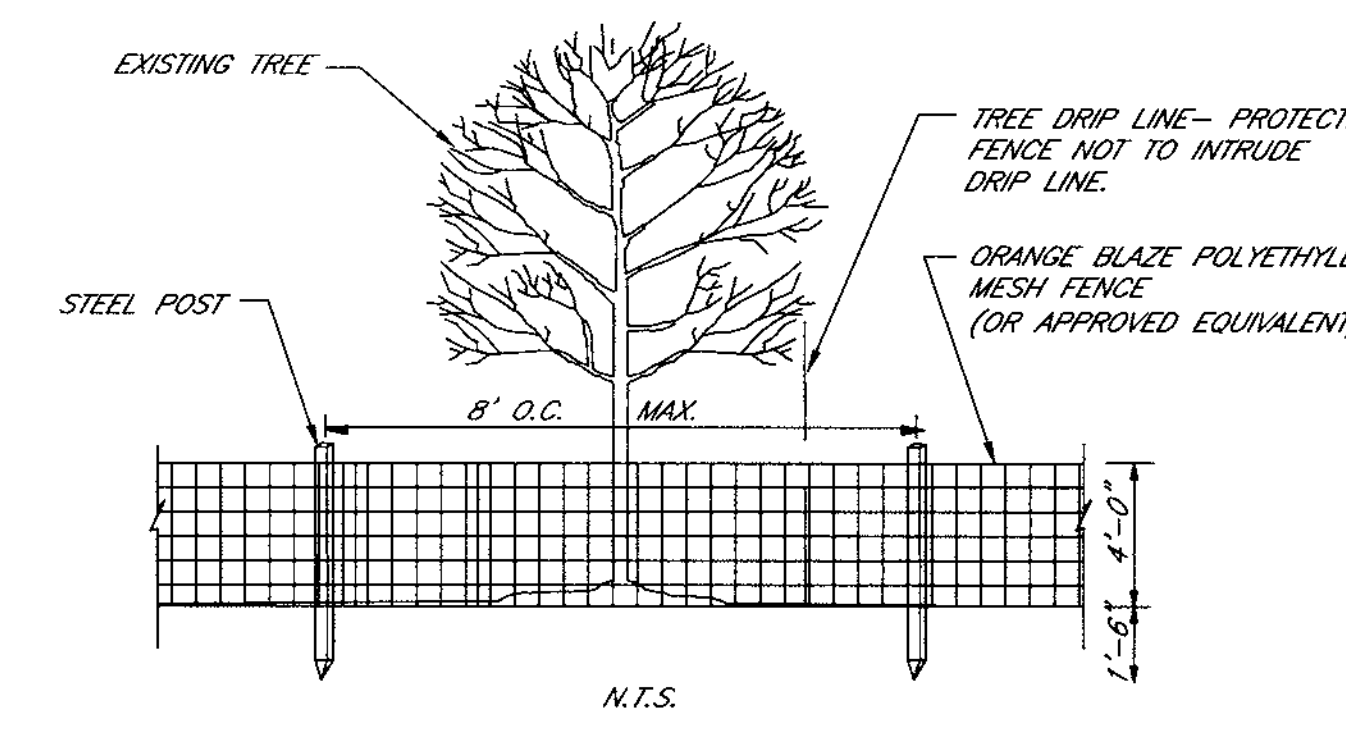
David Smith 8/26/99
 DIRECTOR DATE

DATE: 12/18/98
 JOB NUMBER: M2141.00
 FILE NUMBER: 2063PROF
 PLOTTED: 8/04/99
 DRAWN BY: RJ

PROFILES AND DETAILS
 SHEET C-4
 4 of 7



1 **SILT FENCE**
SCALE: NTS



4 **TREE PROTECTION FENCE**
SCALE: NTS

REVIEWED FOR HOWARD COUNTY S.C.D. AND MEETS TECHNICAL REQUIREMENTS.

Chief Simmons 8/17/99
SIGNATURE - U.S. NATURAL RESOURCES CONSERVATION SERVICE DATE

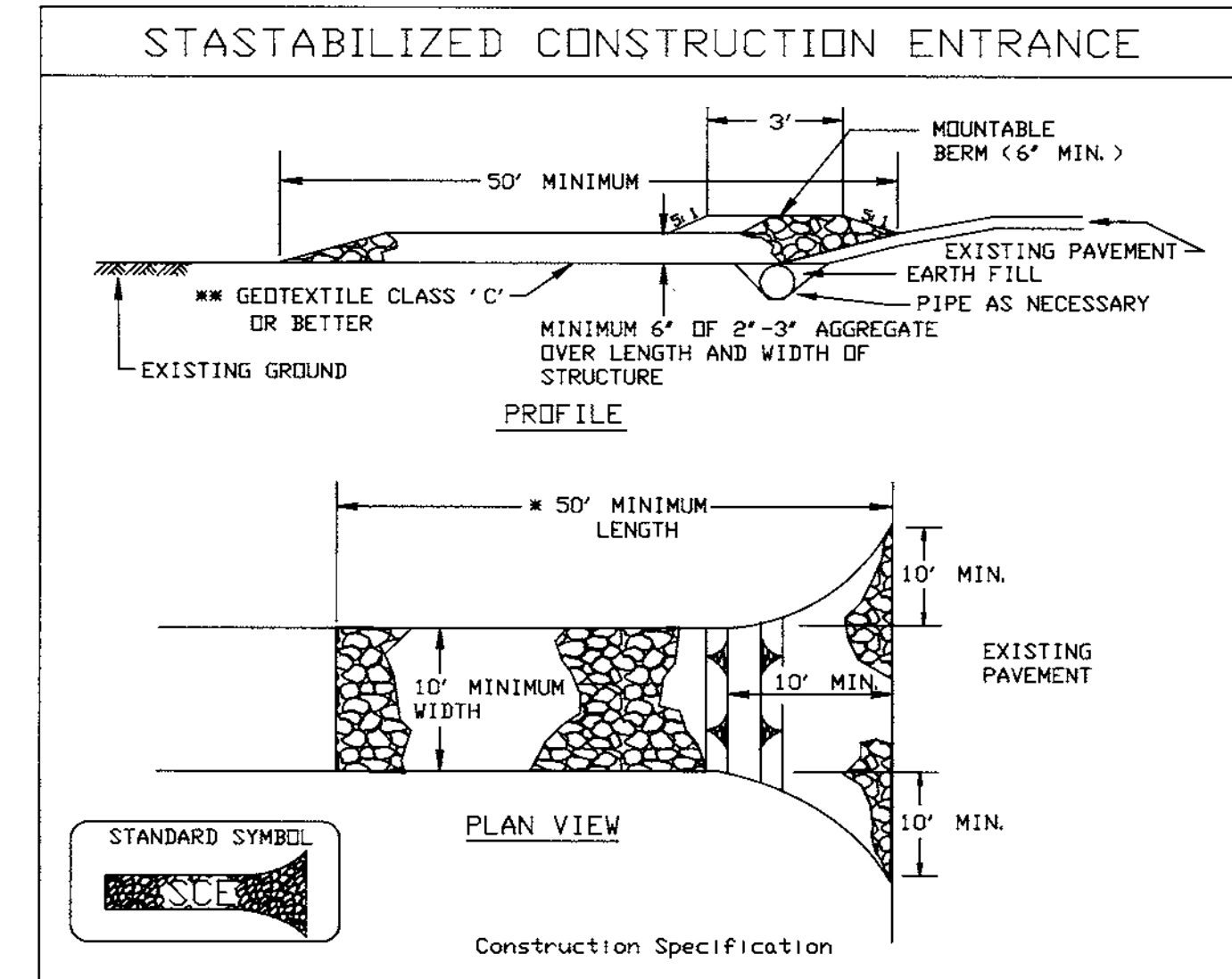
THIS DEVELOPMENT PLAN IS APPROVED FOR SOIL EROSION AND SEDIMENT CONTROL BY THE HOWARD SOIL CONSERVATION DISTRICT.

John R. Robertson 8/17/99
APPROVED DATE

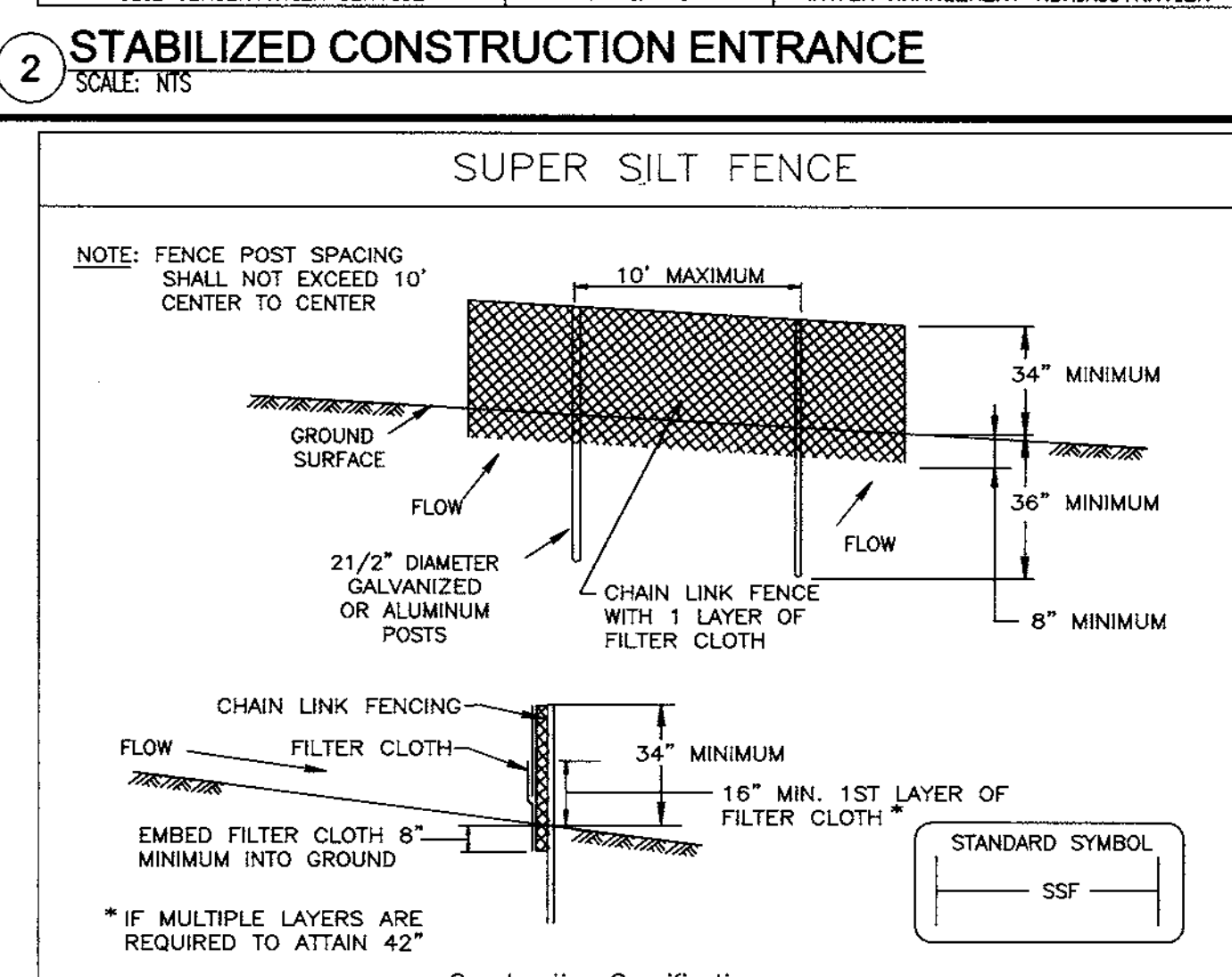
CERTIFICATION BY THE ENGINEER

I HEREBY CERTIFY THAT THIS PLAN FOR SEDIMENT AND EROSION CONTROL REPRESENTS A PRACTICAL AND WORKABLE PLAN BASED ON MY PERSONAL KNOWLEDGE OF THE SITE CONDITIONS AND THAT IT WAS PREPARED IN ACCORDANCE WITH THE REQUIREMENTS OF THE HOWARD SOIL CONSERVATION DISTRICT.

Mark H. Monok 8/19/99
NAME DATE



2 **STABILIZED CONSTRUCTION ENTRANCE**
SCALE: NTS

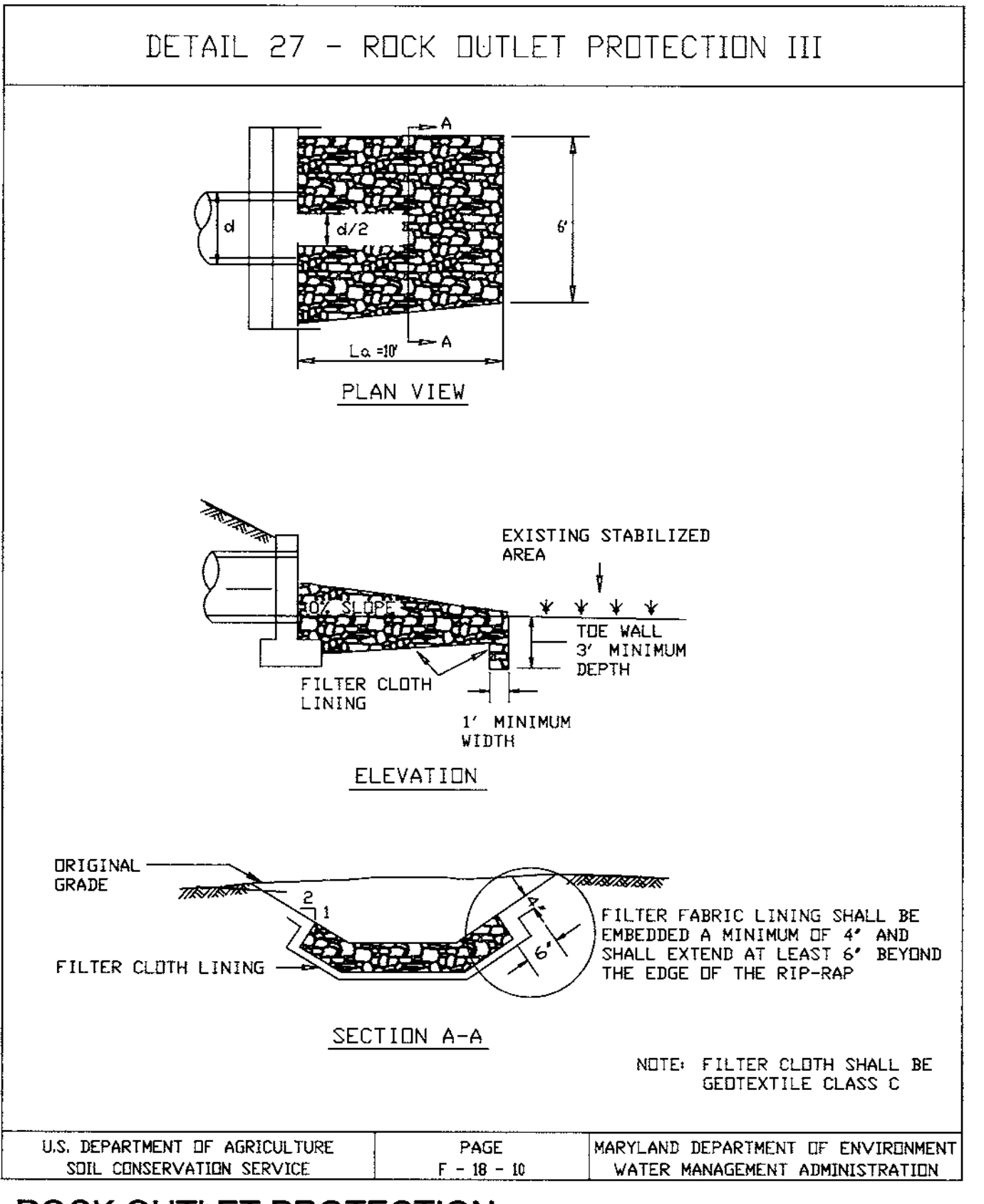


5 **SUPER SILT FENCE**
SCALE: NTS

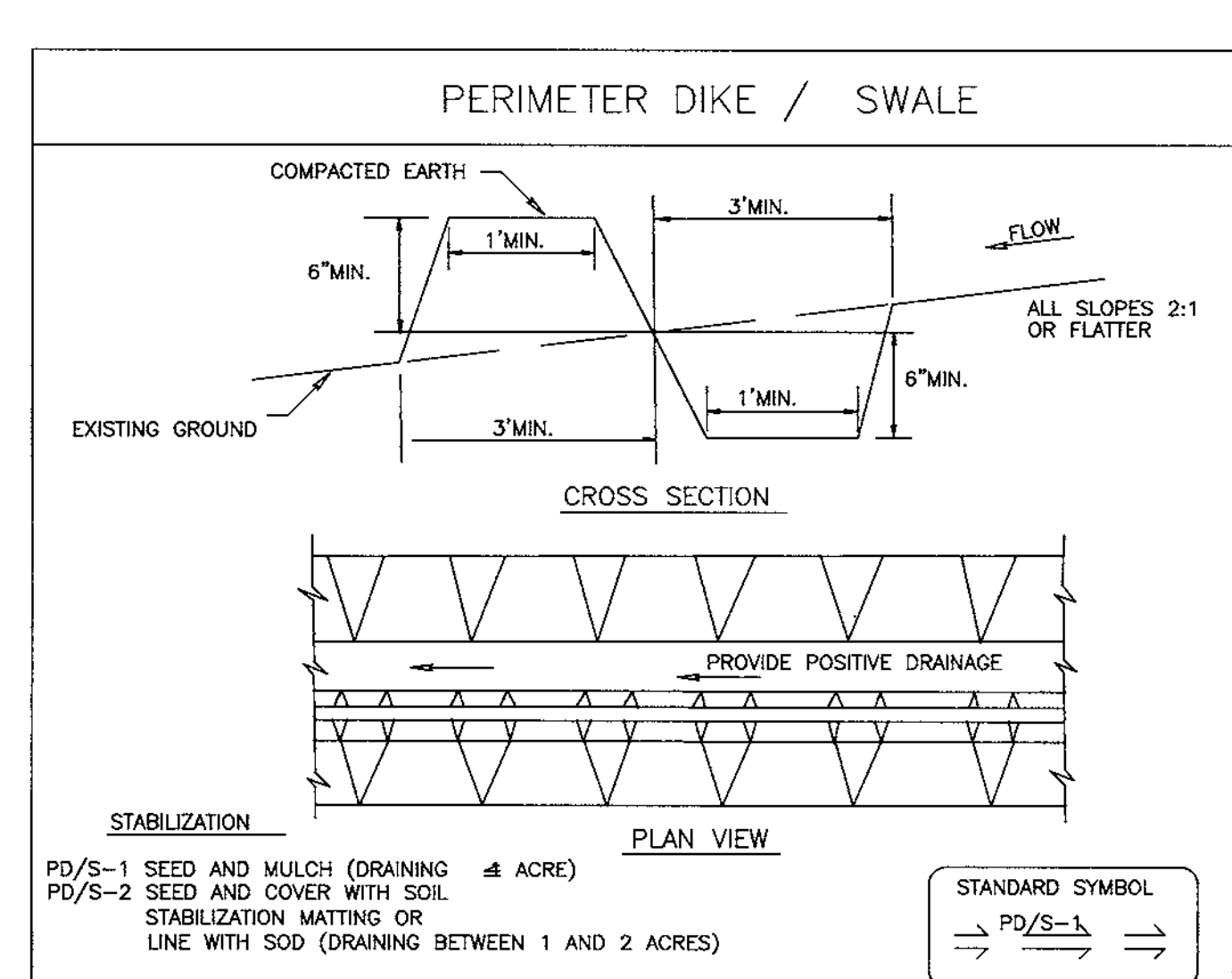
CERTIFICATION BY THE DEVELOPER/BUILDER

I/WE CERTIFY THAT ALL DEVELOPMENT AND CONSTRUCTION WILL BE DONE ACCORDING TO THIS PLAN OF DEVELOPMENT AND PLAN FOR SEDIMENT AND EROSION CONTROL AND THAT ALL RESPONSIBLE PERSONNEL INVOLVED IN THE CONSTRUCTION PROJECT WILL HAVE A CERTIFICATE OF ATTENDANCE AT A DEPARTMENT OF THE ENVIRONMENT APPROVED TRAINING PROGRAM FOR THE CONTROL OF SEDIMENT AND EROSION BEFORE BEGINNING THE PROJECT. I ALSO AUTHORIZE PERIODIC ON-SITE INSPECTION BY THE HOWARD SOIL CONSERVATION DISTRICT OR THEIR AUTHORIZED AGENTS, AS ARE DEEMED NECESSARY.

D. G. H. B. S. 8/19/99
NAME DATE



3 **ROCK OUTLET PROTECTION**
SCALE: NTS

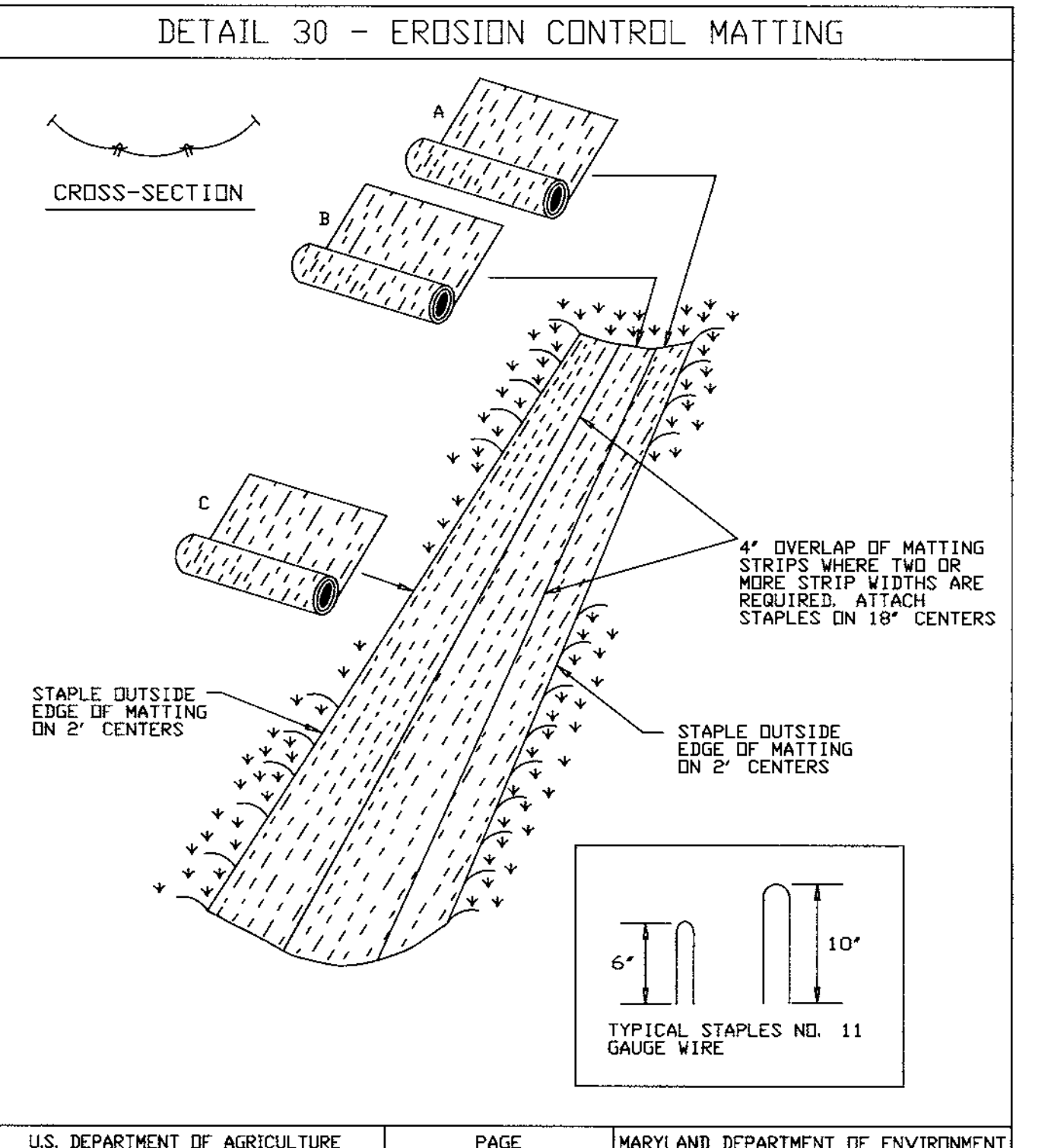
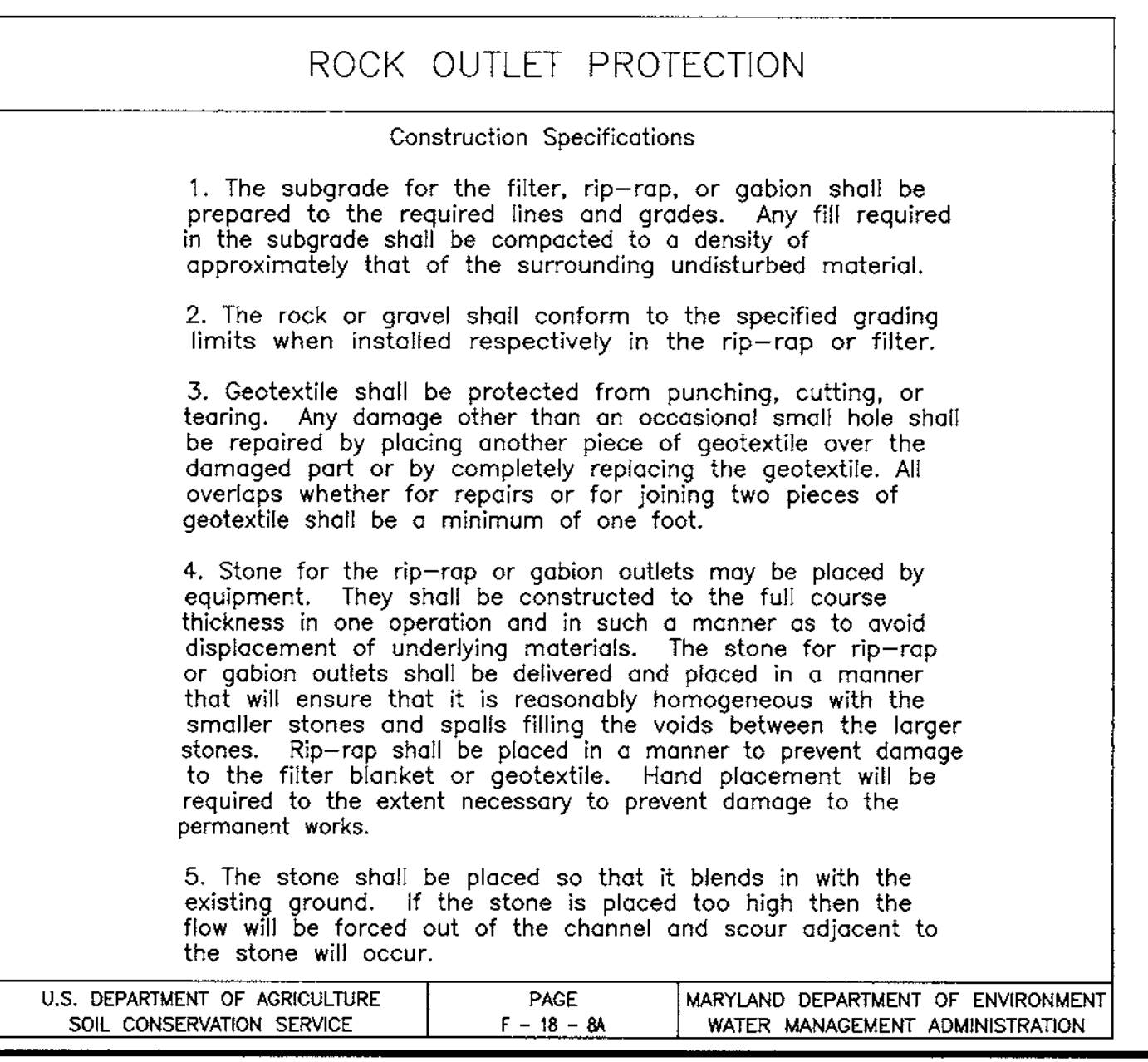


6 **PERIMETER DIKE/SWALE**
SCALE: NTS

CERTIFICATION BY THE ENGINEER

I HEREBY CERTIFY THAT THIS PLAN FOR SEDIMENT AND EROSION CONTROL REPRESENTS A PRACTICAL AND WORKABLE PLAN BASED ON MY PERSONAL KNOWLEDGE OF THE SITE CONDITIONS AND THAT IT WAS PREPARED IN ACCORDANCE WITH THE REQUIREMENTS OF THE HOWARD SOIL CONSERVATION DISTRICT.

Mark H. Monok 8/19/99
NAME DATE



7 **EROSION CONTROL MATTING**
SCALE: NTS

CERTIFICATION BY THE ENGINEER

I HEREBY CERTIFY THAT THIS PLAN FOR SEDIMENT AND EROSION CONTROL REPRESENTS A PRACTICAL AND WORKABLE PLAN BASED ON MY PERSONAL KNOWLEDGE OF THE SITE CONDITIONS AND THAT IT WAS PREPARED IN ACCORDANCE WITH THE REQUIREMENTS OF THE HOWARD SOIL CONSERVATION DISTRICT.

Chief Simmons 8/20/99
SIGNATURE - U.S. NATURAL RESOURCES CONSERVATION SERVICE DATE

THIS DEVELOPMENT PLAN IS APPROVED FOR SOIL EROSION AND SEDIMENT CONTROL BY THE HOWARD SOIL CONSERVATION DISTRICT.

John R. Robertson 8/20/99
APPROVED DATE

SITE DEVELOPMENT PLANS FOR:
OWEN BROWN RIDGE RECREATION FACILITIES
 COLUMBIA GATEWAY COMMERCE CENTER
 OPEN SPACE PARCELS
 A-56 AND A-59
 HOWARD COUNTY, MARYLAND

PLANS PREPARED FOR:
COLUMBIA ASSOCIATION
 10221 WINCOPIN CIRCLE, SUITE 100
 COLUMBIA, MD 21044-3410
 (410) 381-0383

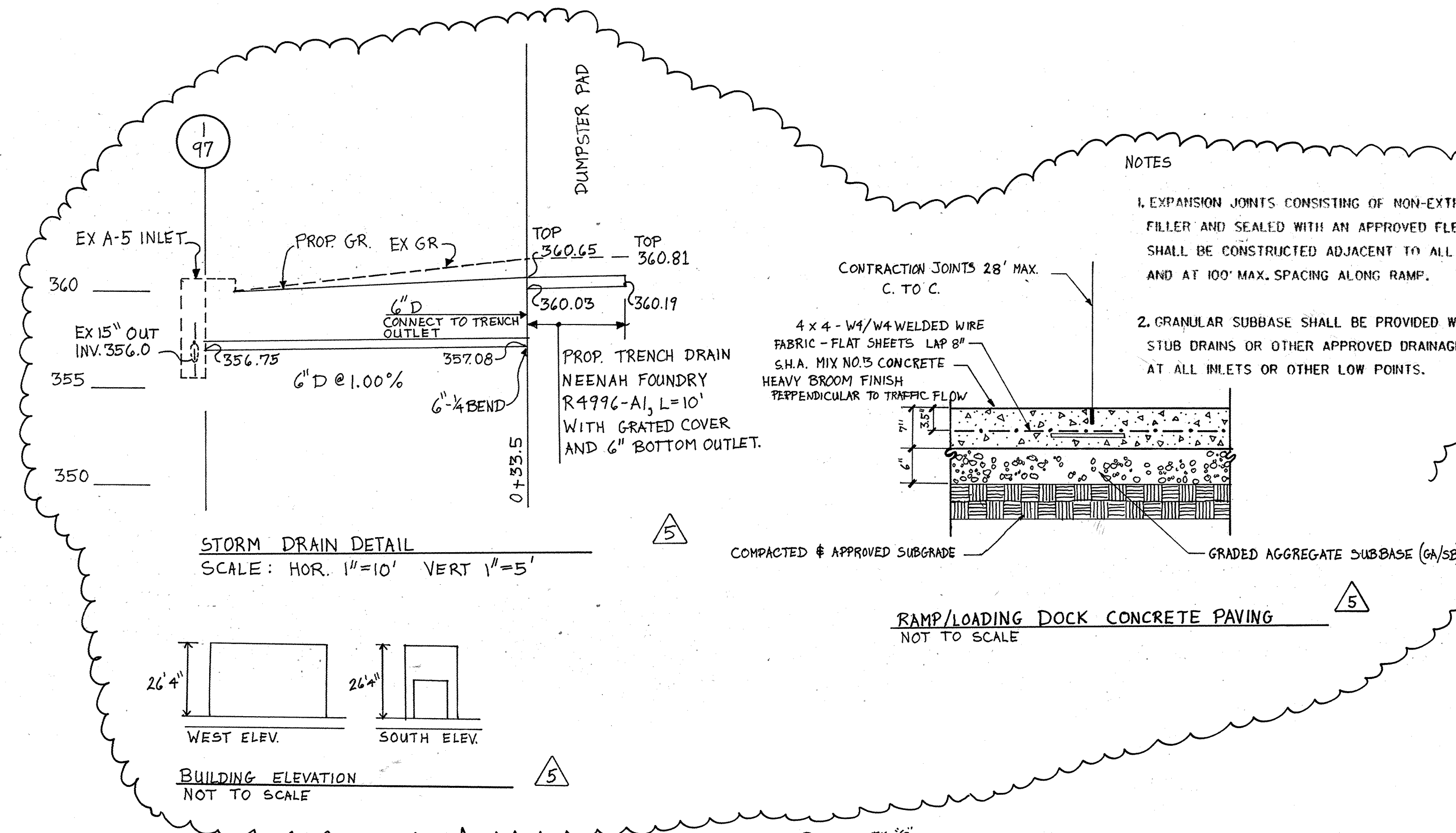
RBA-Group
 ENGINEERS • ARCHITECTS • PLANNERS
 Suite 206, Columbia, Maryland 21046
 Phone (410) 312-0986, Fax 312-0987

REVISIONS

DATE: 01/27/98
 JOB NUMBER: M2063.00
 FILE NUMBER: 2063SEDD
 PLOTTED: 8/04/98
 DRAWN BY: RJ
EROSION CONTROL DETAILS
 SHEET C-6
 6 of 7

LEGEND

- EX. CONTOUR
- EX. WATER
- EX. SANITARY SEWER
- EX. STORM DRAIN
- EX. GAS
- EX. EDGE OF ROAD
- PROP. CONTOUR
- PROP. UTILITIES
- 6" STANDARD COMB. C&G
- 6" REV. COMB. C&G
- CONC. LIGHT POLE ISLAND
- CONCRETE
- EX. CURB TO BE REMOVED



NOTES

- EXPANSION JOINTS CONSISTING OF NON-EXTRUDING JOINT FILLER AND SEALED WITH AN APPROVED FLEXIBLE SEALER, SHALL BE CONSTRUCTED ADJACENT TO ALL FIXED FEATURES AND AT 100' MAX. SPACING ALONG RAMP.
- GRANULAR SUBBASE SHALL BE PROVIDED WITH PERFORATED STUB DRAINS OR OTHER APPROVED DRAINAGE PROVISIONS AT ALL INLETS OR OTHER LOW POINTS.

COLUMBIA MALL INC.
LOT 42 Col. TC 2/1
ZONED NT
EXISTING MALL
UPPER LEVEL = 377.60
LOWER LEVEL = 361.60

LOT 28
Col. TC 2/1
ZONED NT
SEARS ROEBUCK & CO.
ELEV. = 361.3

Col. TC 2/1
LOT 10
ZONED NT
JC PENNEY
ELEV. = 361.6

6-7-99
Date

Professional Engr. No. 10953

APPROVED
PLANNING BOARD
OF HOWARD COUNTY
DATE July 2, 1998

APPROVED: HOWARD COUNTY DEPT. OF PLANNING & ZONING

Michael Daneman 7/12/99
CHIEF, DEVELOPMENT ENGINEERING DIVISION MK DATE

David Hoppitt 7/16/99
CHIEF, DIVISION OF LAND DEVELOPMENT DATE

James S. Spiller 7/13/99
DIRECTOR DATE

Date	No.	Revision Description
9-18-00	3	ADD 240 SF OF RETAIL
5-18-00	1	ADD 598 SF OF RETAIL & DUMPSTER

THE MALL IN COLUMBIA
REVISED PHASE III
TOWN CENTER
SECTION 2 AREA 1
HOWARD COUNTY, MD
LOTS 42, 44

OWNER /DEVELOPER:
THE HOWARD RESEARCH & DEVELOPMENT CORP.
COLUMBIA MALL, INC.
10275 LITTLE PATUXENT PARKWAY
COLUMBIA, MARYLAND 21044

DMW
Duff-McCune-Walker, Inc.
200 East Pennsylvania Avenue
Towson, Maryland 21286
(410) 296-3333
Fax 296-4705

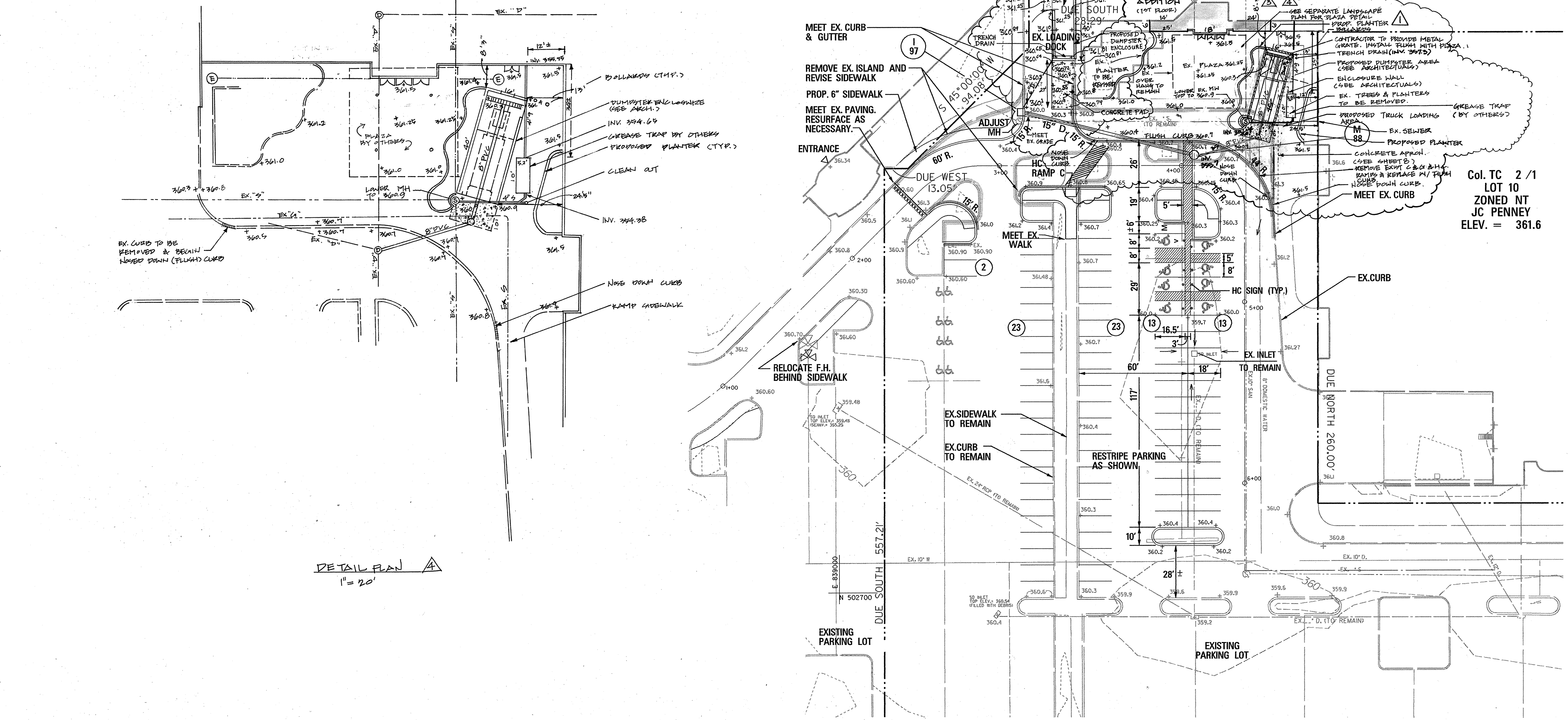
A Team of Land Planners,
Landscape Architects,
Engineers, Surveyors &
Environmental Professionals

TITLE

**SITE DEVELOPMENT PLAN
SOUTH MALL ENTRANCE**

Des By MJP Scale 1"=30' Proj. No. 95019B
Dm By FJZ Date 6-4-99
Chk By JWR Approved

July 9, 2004	5	DUMPSTER PAD ENCLOSURE AND GRADING
Oct. 6, 2000	4	REV. DUMPSTER ENCL., ADD GREASE TRAP & DETAIL



DETAIL PLAN
1"=20'