

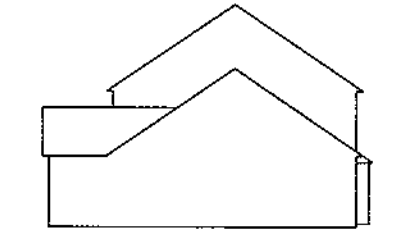
MATCHLINE SEE SHEET 4

MATCHLINE SEE SHEET 3

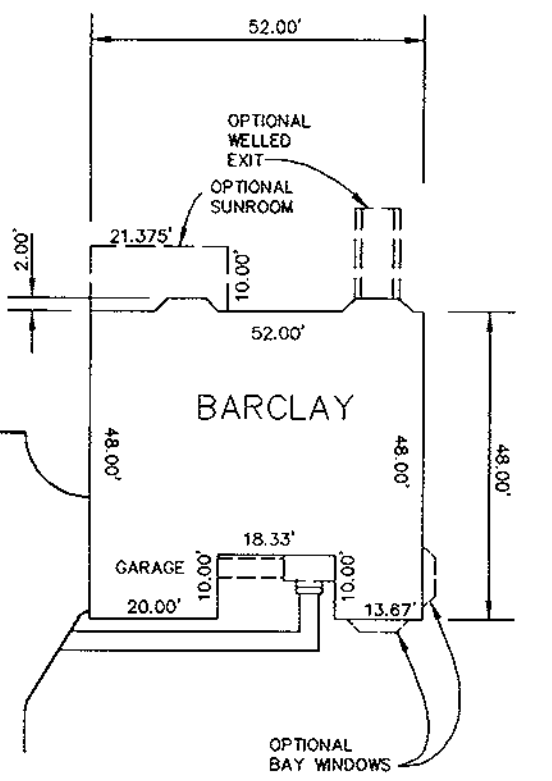
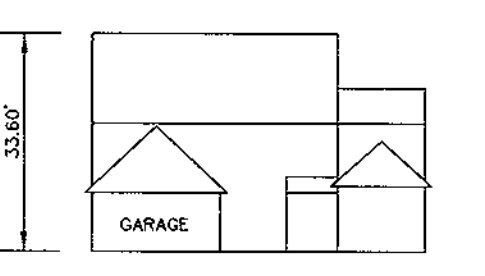
MATCHLINE SEE SHEET 3



SIDE VIEW



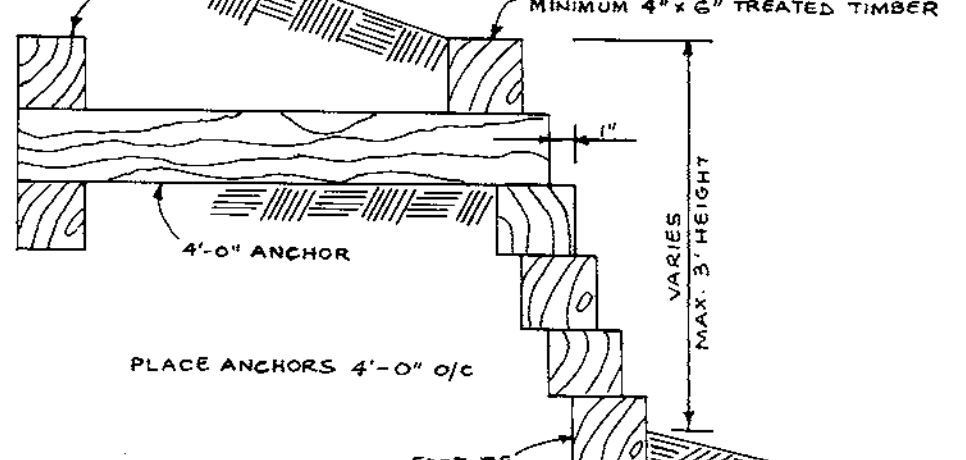
FRONT VIEW



HOUSE TYPE

8-13-99 DATE NO. 100
 REVISION: ADDED RETAINING WALL TO LOT 114

NOTE: SEE SHEET 8 OF 8 FOR MORE HOUSE TYPES.



RETAINING WALL DETAIL

APPROVED: HOWARD COUNTY DEPARTMENT OF PLANNING AND ZONING.

Mark J. Taylor 7/14/98
 DIRECTOR DATE

Richard Blund 7/2/98
 CHIEF, DEVELOPMENT ENGINEERING DIVISION DATE

Richard Blund 7/14/98
 CHIEF, DIVISION OF LAND DEVELOPMENT DATE

8/98 REVISED HOUSE TYPE LOT 128

OWNER / DEVELOPER
 WILBEN LIMITED PARTNERSHIP
 C/O ANDREW L. ISAACSON
 5450 WHITELY PARK
 TERRACE #410
 BETHESDA, MD 20814

PROJECT
 CLARKS GLEN
 SECTION 2 AREA 1
 LOTS 99-157

AREA
 TAX MAP NO. 35 PARCEL 205
 5th ELECTION DISTRICT
 HOWARD COUNTY, MARYLAND

TITLE
SITE DEVELOPMENT PLAN

RIEMER MUEGGE & ASSOCIATES, INC.
 ENGINEERING • ENVIRONMENTAL SERVICES • PLANNING • SURVEYING
 8818 Centre Park Drive, Columbia, Maryland 21045
 tel 410.997.8900 fax 410.997.9282

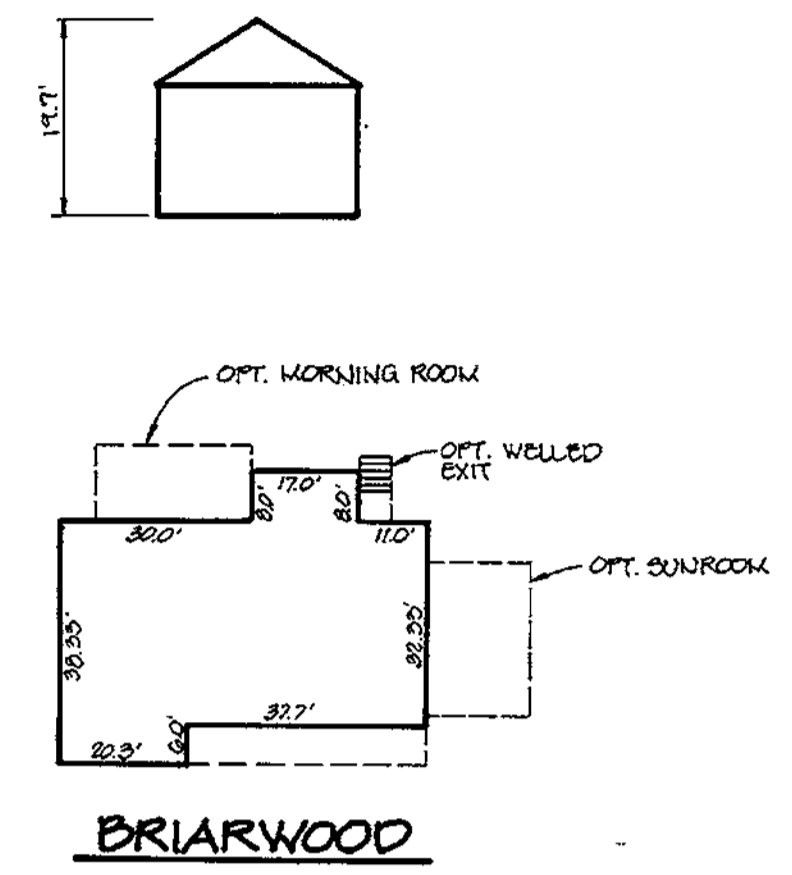
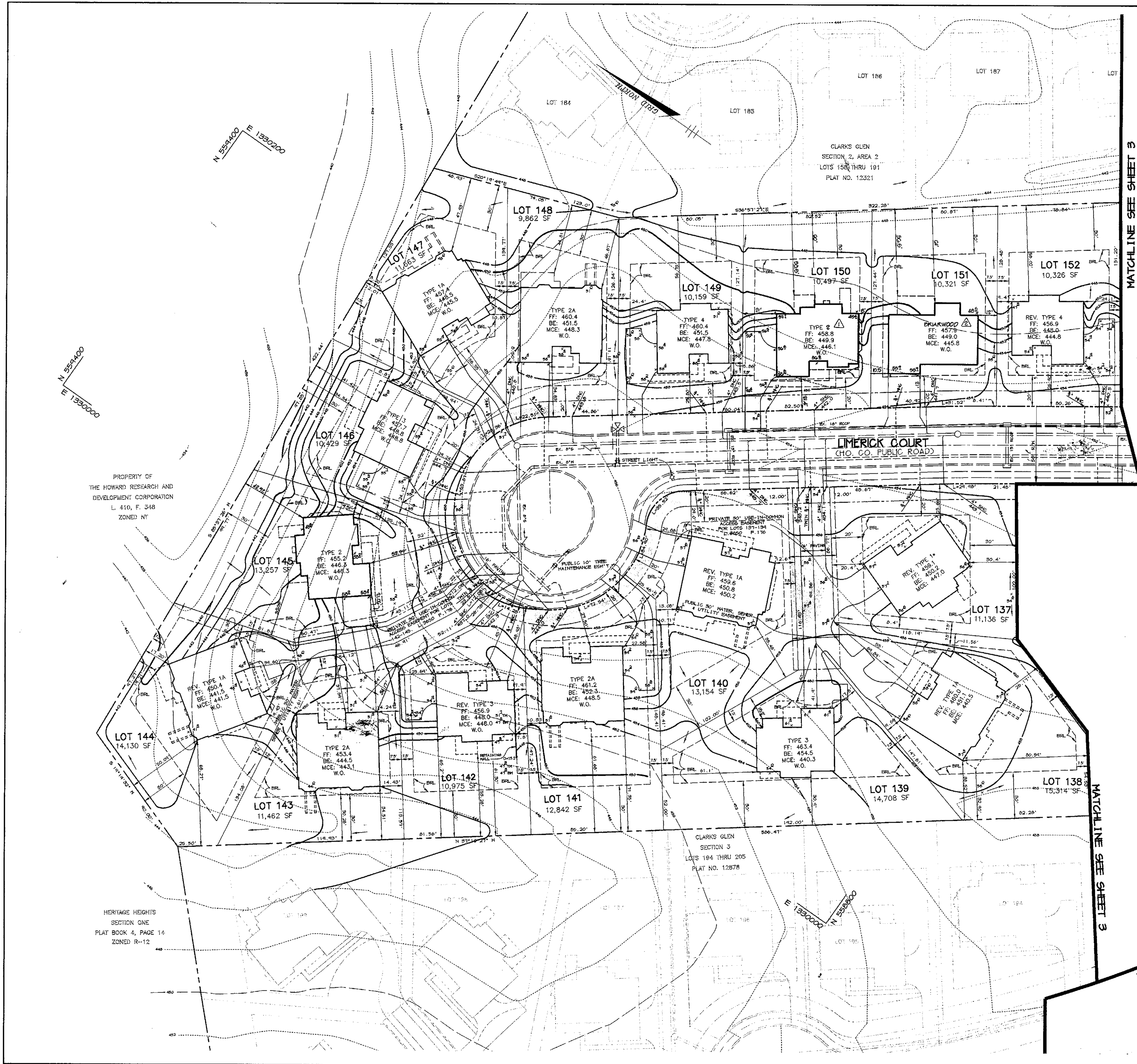
DATE: JUNE 10, 1998

DESIGNED BY: BLW
 DRAWN BY: BLW
 PROJECT NO: X98212
 SDP2.DWG
 SCALE: 1" = 30'
 DRAWING NO. 2 OF 8



SDP-98-99

PROJECT: X98212 (SDP2) REV. JUN. 10, 1998 RIEMER MUEGGE AND ASSOCIATES, INC.



PROPERTY OF
THE HOWARD RESEARCH AND
DEVELOPMENT CORPORATION
L. 410, F. 348
ZONED NT

HERITAGE HEIGHTS
SECTION ONE
PLAT BOOK 4, PAGE 14
ZONED R-12

APPROVED : HOWARD COUNTY DEPARTMENT OF PLANNING AND ZONING.	
<i>Mark J. ...</i> DIRECTOR	7/14/98 DATE
<i>Chris ...</i> CHIEF, DEVELOPMENT ENGINEERING DIVISION	7/2/98 DATE
<i>Richard ...</i> CHIEF, DIVISION OF LAND DEVELOPMENT	7/1/98 DATE
REV. HOUSE TYPE LOT 151	
REV. GENERAL BLOCK FOR LOT 150 TO TYPE 2	
DATE NO.	REVISION
OWNER / DEVELOPER WILBEN LIMITED PARTNERSHIP C/O ANDREW L. ISAACSON 5450 WHITELEY PARK TERRACE #410 BETHESDA, MD 20814	
PROJECT CLARKS GLEN SECTION 2 AREA 1 LOTS 99-157	
AREA TAX MAP NO. 35 PARCEL 205 5th ELECTION DISTRICT HOWARD COUNTY, MARYLAND	
TITLE SITE DEVELOPMENT PLAN	
RIEMER MUEGGE & ASSOCIATES, INC. ENGINEERING • ENVIRONMENTAL SERVICES • PLANNING • SURVEYING 8818 Centre Park Drive, Columbia, Maryland 21045 tel 410.997.8900 fax 410.997.9282	
	DESIGNED BY : BLN
	DRAWN BY : BLN
	PROJECT NO : X93212 SDP4.DWG
	DATE : JUNE 10, 1998
SCALE : 1" = 30'	
DRAWING NO. 4 OF 5	

M:\PROJECT\93212\SDP4 Rev Jun 10 09:11:06 1998 RIEMER MUEGGE AND ASSOCIATES, INC.

TEMPORARY SEEDING NOTES

Apply to graded or cleared areas likely to be redistributed...

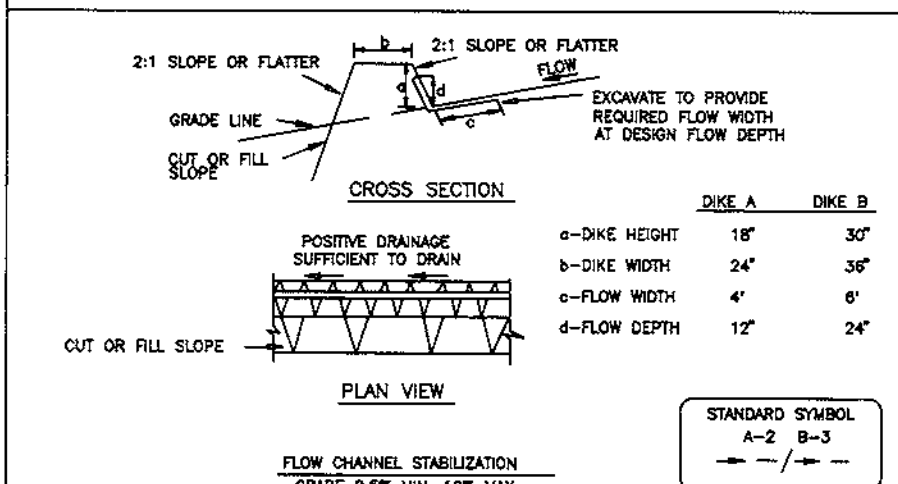
STANDARD SEDIMENT CONTROL NOTES

A MINIMUM OF 48 HOURS NOTICE MUST BE GIVEN TO THE HOWARD COUNTY...

PERMANENT SEEDING NOTES

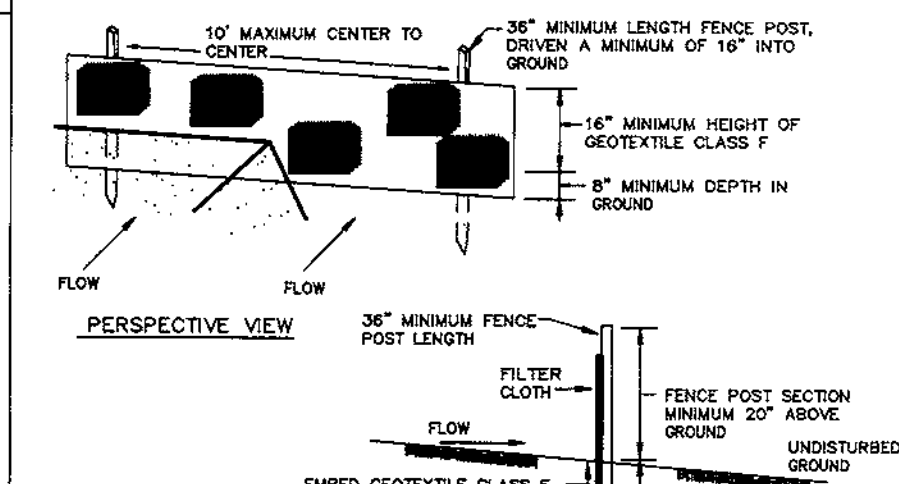
Apply to graded or cleared areas not subject to immediate further...

DETAIL 1 - EARTH DIKE



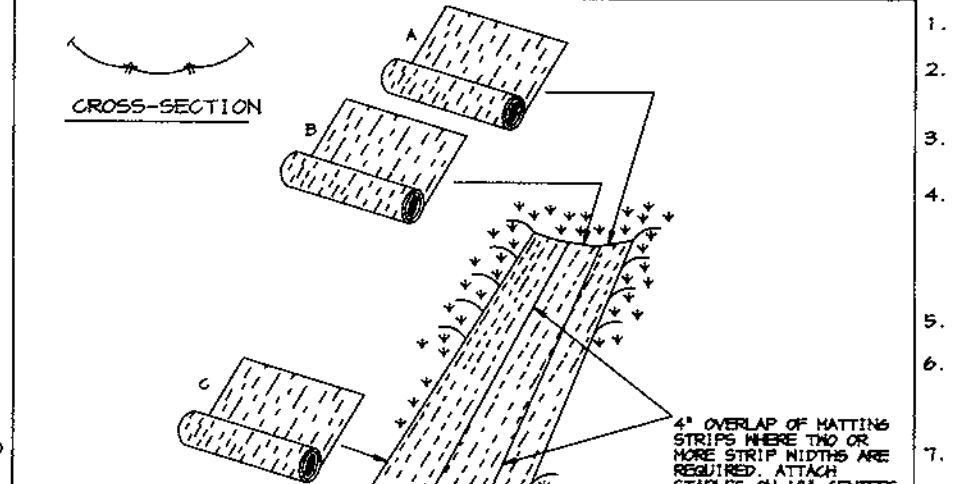
Construction Specifications: 1. Seed and cover with straw mulch. 2. Seed and cover with Erosion Control Matting...

DETAIL 22 - SILT FENCE



Construction Specifications: 1. Fence posts shall be a minimum of 2\"/>

DETAIL 30 - EROSION CONTROL MATTING



Construction Specifications: 1. Begin the matting by placing the top end of the matting in a narrow trench...

SEQUENCE OF CONSTRUCTION

- 1. OBTAIN GRADING PERMITS FOR SINGLE FAMILY HOME CONSTRUCTION. 2. INSTALL/REPAIR/SHOW/REMOVE SEDIMENT CONTROL DEVICES AS SHOWN...

PLANT MATERIAL LIST table with columns: KEY, QTY, BOTANICAL & COMMON NAME, SIZE, REMARKS

APRON DETAIL CHART table with columns: HOWARD COUNTY STANDARD DETAIL, APPLICABLE LOTS

BY THE DEVELOPER: I/WE CERTIFY THAT ALL DEVELOPMENT AND CONSTRUCTION WILL BE DONE ACCORDING TO THIS PLAN...

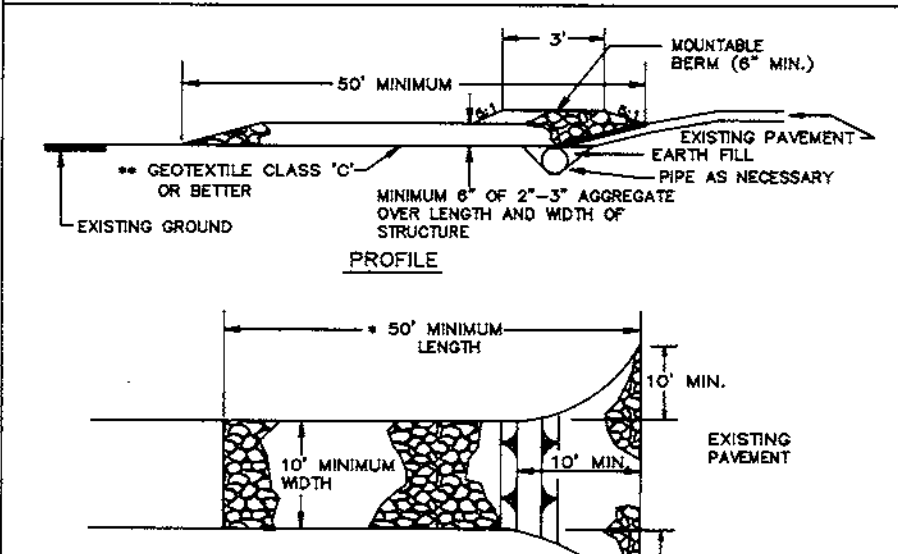
BY THE ENGINEER: I CERTIFY THAT THIS PLAN FOR EROSION AND SEDIMENT CONTROL REPRESENTS A PRACTICAL AND WORKABLE PLAN...

SCHEDULE A PERIMETER LANDSCAPE EDGE

Schedule A Perimeter Landscape Edge table with columns: PERIMETER TYPE, LANDSCAPE TYPE, CREDIT FT FOR EXISTING VEGETATION...

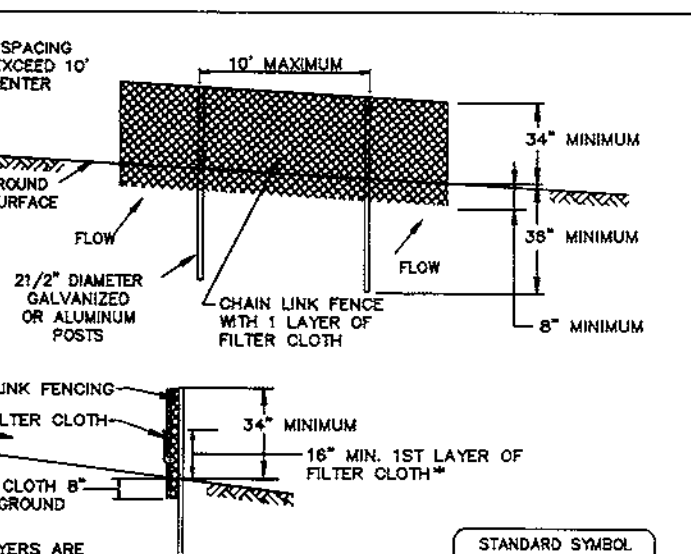
NOTE: THIS PLAN HAS BEEN PREPARED IN ACCORDANCE WITH THE PROVISIONS OF SECTION 16.124 OF THE HOWARD COUNTY CODE...

DETAIL 24 - STABILIZED CONSTRUCTION ENTRANCE



Construction Specifications: 1. Length - minimum of 50' (+30' for single residence lot). 2. Width - 10' minimum...

DETAIL 33 - SUPER SILT FENCE



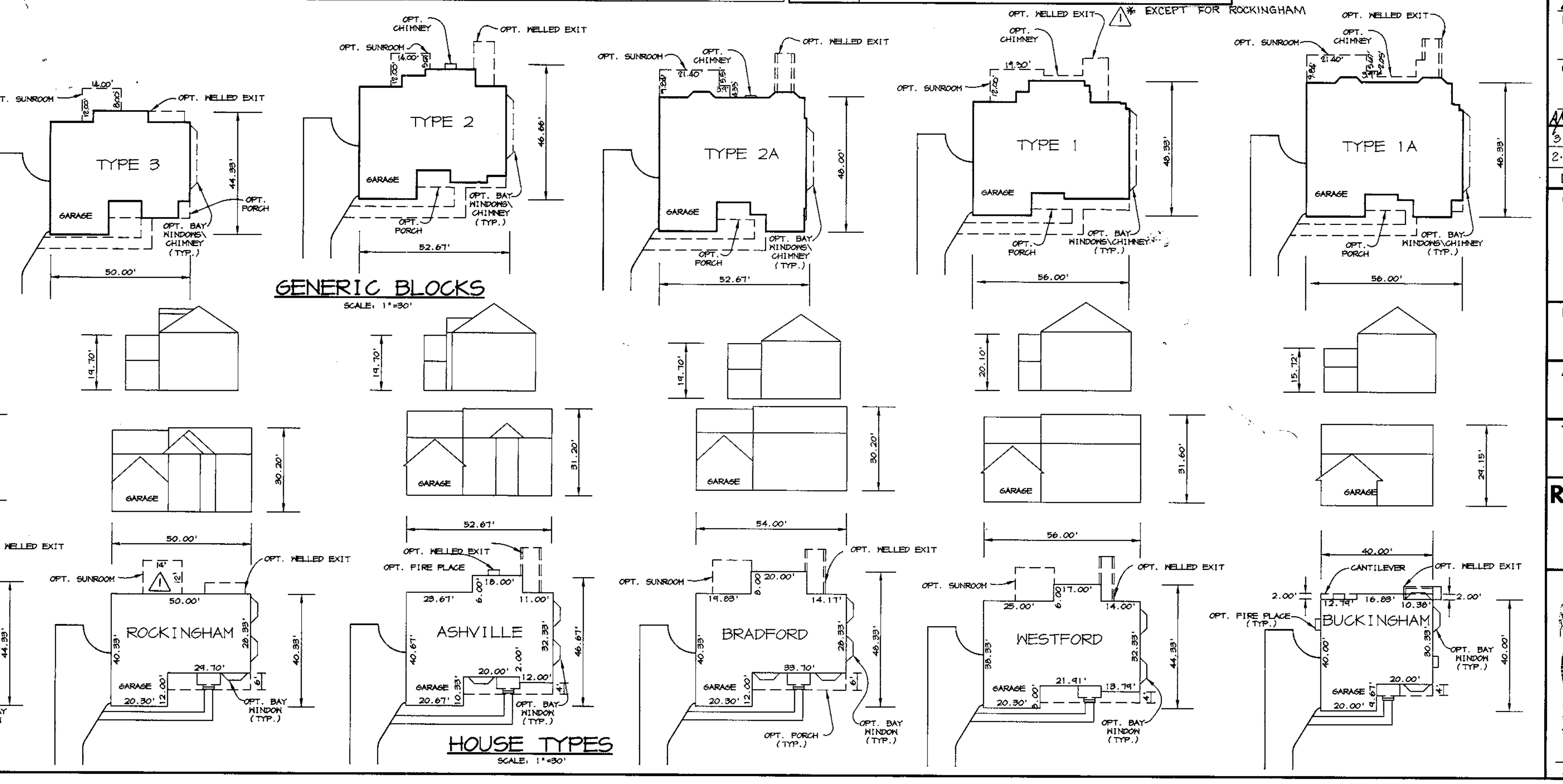
Construction Specifications: 1. Fencing shall be 42\"/>

HOUSE TYPE SUMMARY CHART

House Type Summary Chart table with columns: GENERIC BLOCK, ALL HOUSE TYPES WITH ANY OPTIONS...

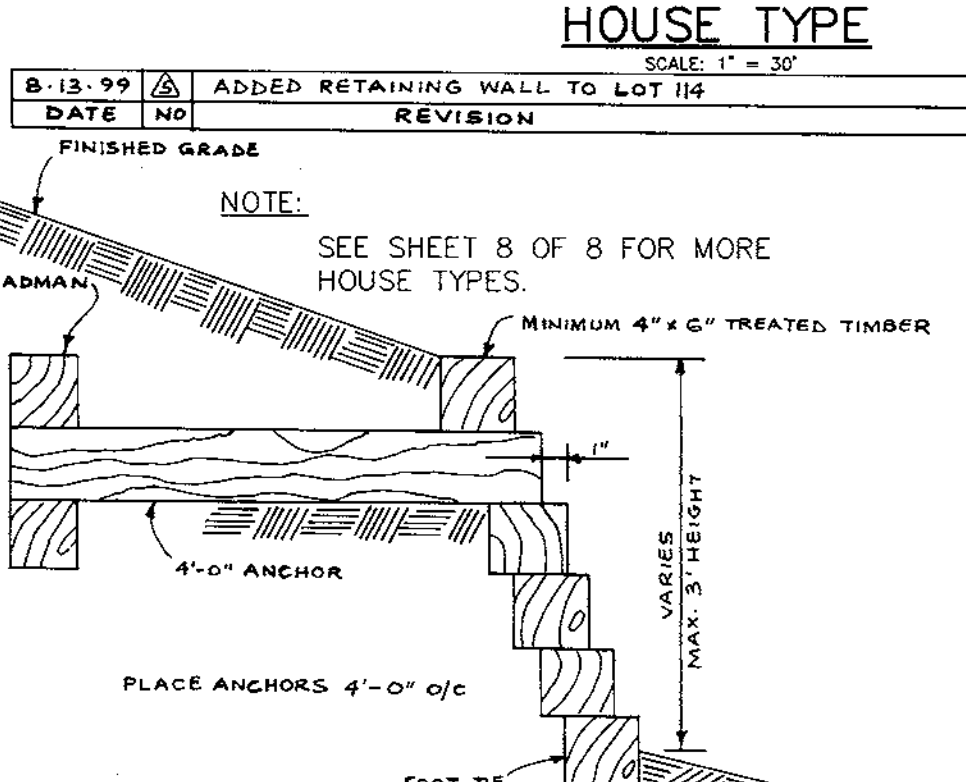
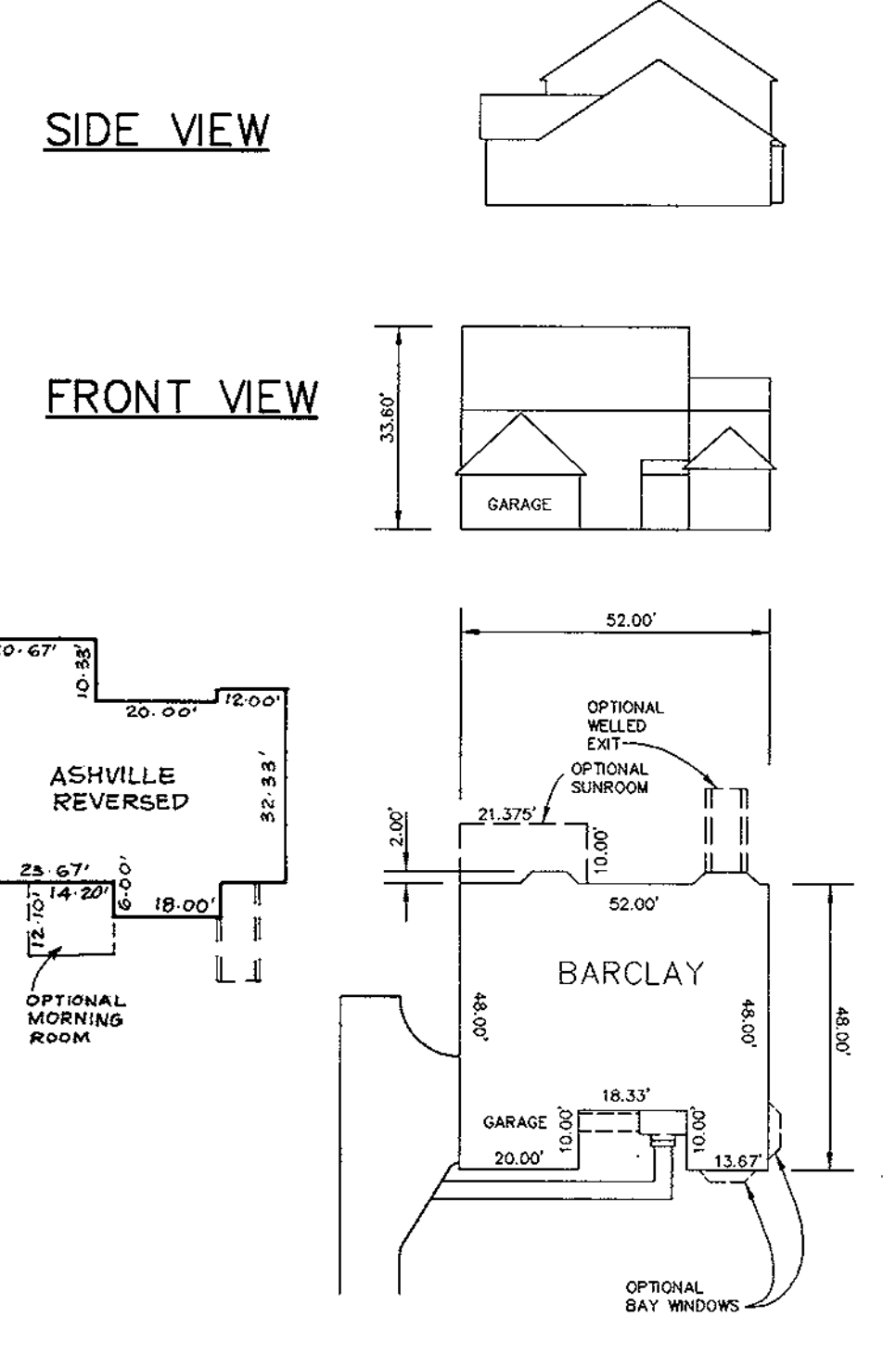
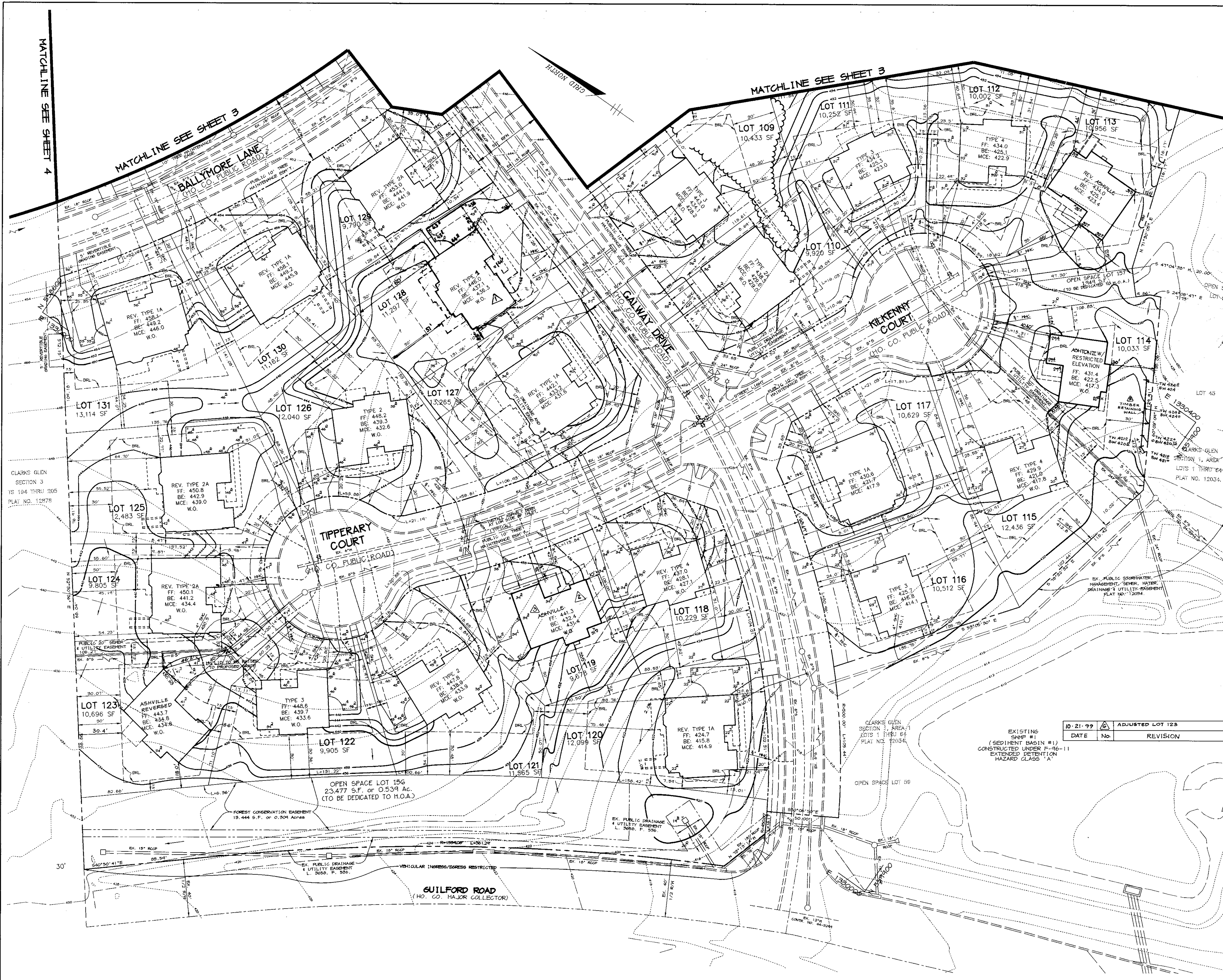
21.0 STANDARD AND SPECIFICATIONS

21.0 STANDARD AND SPECIFICATIONS TOPSOIL Definition: Placement of topsoil over a prepared subsoil prior to establishment of permanent vegetation...



APPROVED: HOWARD COUNTY DEPARTMENT OF PLANNING AND ZONING. DIRECTOR: [Signature] 7/14/98 DATE: 7/14/98...

CLARKS GLEN SECTION 2 AREA 1 LOTS 94-157. LANDSCAPING NOTES AND DETAILS. RIEMER MUEGGE & ASSOCIATES, INC. ENGINEERING • ENVIRONMENTAL SERVICES • PLANNING • SURVEYING



DATE	NO.	REVISION
8-13-99	1	ADDED RETAINING WALL TO LOT 119
4-19-99	2	REV. HOUSE TYPE TO ASHVILLE FOR LOT 110
3-23-99	3	REV. HOUSE TYPE TO ASHVILLE FOR LOT 110
APPROVED: HOWARD COUNTY DEPARTMENT OF PLANNING AND ZONING.		
<i>Mark J. Taylor</i>		7/14/98
DIRECTOR		DATE
<i>Richard Blood</i>		7/2/98
CHIEF, DEVELOPMENT ENGINEERING DIVISION		DATE
<i>Richard Blood</i>		7/14/98
CHIEF, DIVISION OF LAND DEVELOPMENT		DATE
2-3-99	4	LOT 119: REVISED HOUSE TYPE FROM GENERIC BLOCK TO RESIDENTIAL HOUSE TYPE.
8/98	5	REVISED HOUSE TYPE LOT 128
DATE	NO.	REVISION
10-21-99	6	ADJUSTED LOT 123
DATE	NO.	REVISION

OWNER / DEVELOPER
 MILBEN LIMITED PARTNERSHIP
 C/O ANDREW L. ISAACSON
 5450 WHITELEY PARK
 TERRACE #410
 BETHESDA, MD 20814

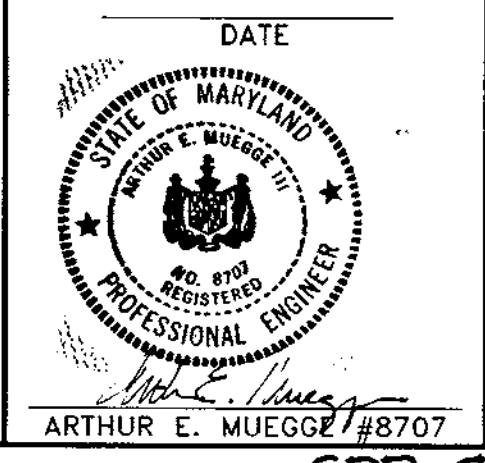
PROJECT
CLARKS GLEN
 SECTION 2 AREA 1
 LOTS 99-157

AREA TAX MAP NO. 35 PARCEL 205
 5th ELECTION DISTRICT
 HOWARD COUNTY, MARYLAND

TITLE
SITE DEVELOPMENT PLAN

RIEMER MUEGGE & ASSOCIATES, INC.
 ENGINEERING • ENVIRONMENTAL SERVICES • PLANNING • SURVEYING
 8818 Centre Park Drive, Columbia, Maryland 21045
 tel 410.997.8900 fax 410.997.9282

DATE	DESIGNED BY: BLW
	DRAWN BY: BLW
	PROJECT NO: X93212
	SDF2.DWG
	DATE: JUNE 10, 1998
	SCALE: 1" = 30'
	DRAWING NO. 2 OF 8



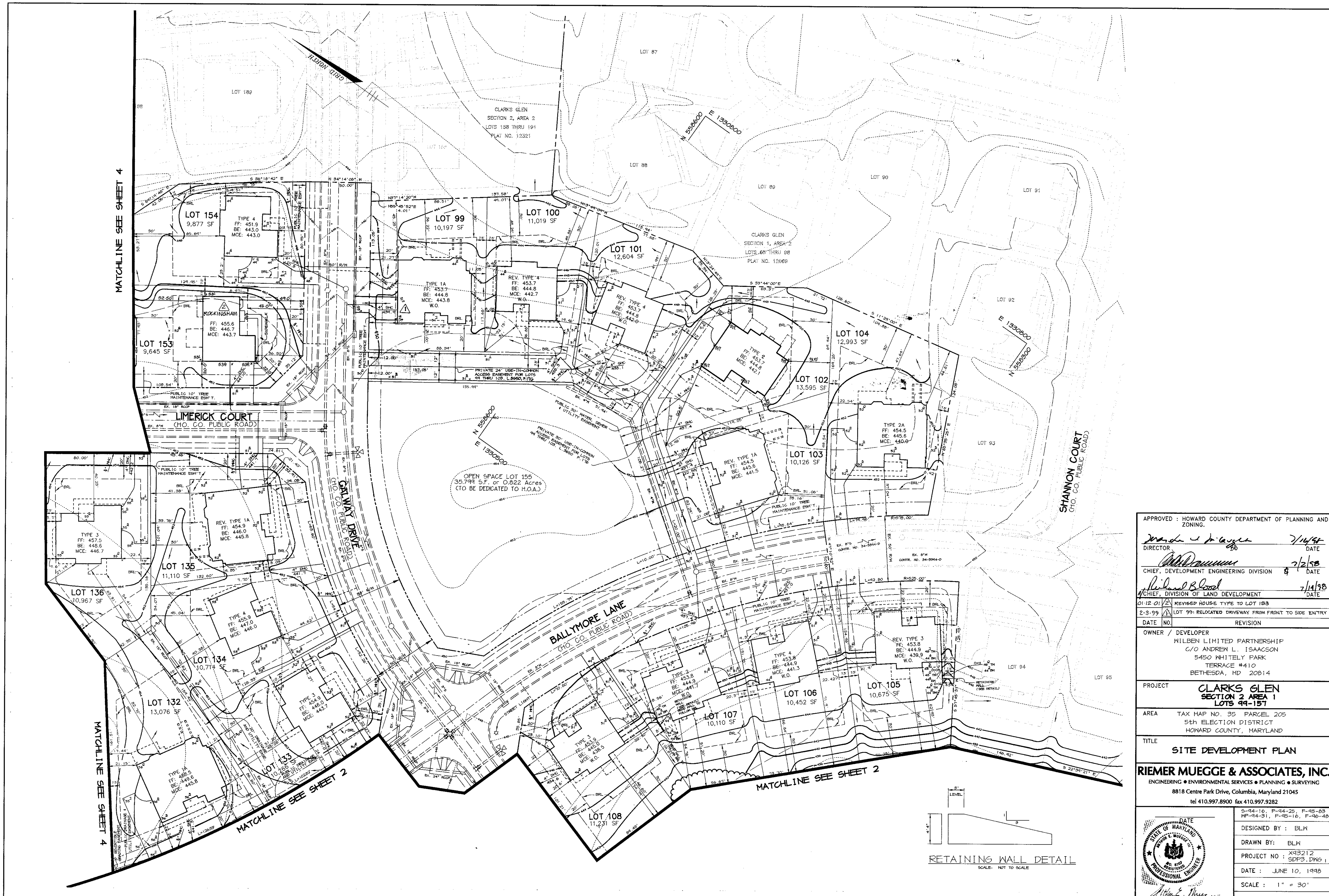
M:\PROJECT\93212\SDP2 Mod Jun 10 09:06:21 1998 RIEMER MUEGGE AND ASSOCIATES, INC.

MATCHLINE SEE SHEET 4

MATCHLINE SEE SHEET 4

MATCHLINE SEE SHEET 2

MATCHLINE SEE SHEET 2



APPROVED : HOWARD COUNTY DEPARTMENT OF PLANNING AND ZONING.

Wanda J. Taylor 7/14/98
DIRECTOR DATE

Richard Blum 7/2/98
CHIEF, DEVELOPMENT ENGINEERING DIVISION DATE

Richard Blum 7/14/98
CHIEF, DIVISION OF LAND DEVELOPMENT DATE

01-12-01 REVISED HOUSE TYPE TO LOT 193
2-3-99 LOT 99: RELOCATED DRIVEWAY FROM FRONT TO SIDE ENTRY

DATE NO. REVISION

OWNER / DEVELOPER
MILBEN LIMITED PARTNERSHIP
C/O ANDREW L. ISAACSON
5450 WHITELY PARK
TERRACE #410
BETHESDA, MD 20814

PROJECT
CLARKS GLEN
SECTION 2 AREA 1
LOTS 99-157

AREA TAX MAP NO. 35 PARCEL 205
5th ELECTION DISTRICT
HOWARD COUNTY, MARYLAND

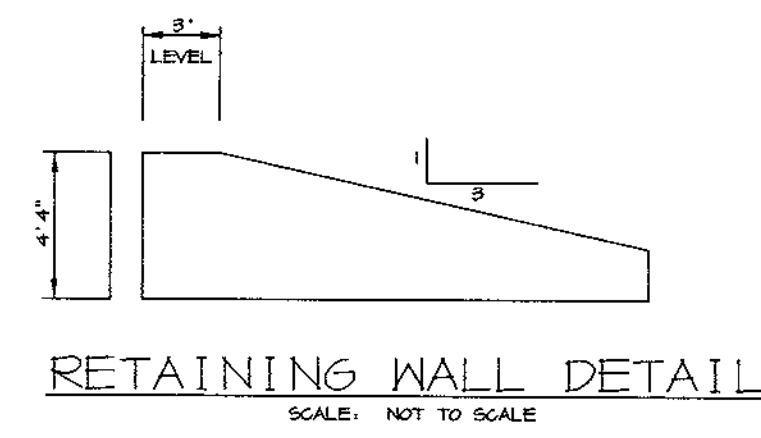
TITLE
SITE DEVELOPMENT PLAN

RIEMER MUEGGE & ASSOCIATES, INC.
ENGINEERING • ENVIRONMENTAL SERVICES • PLANNING • SURVEYING
8818 Centre Park Drive, Columbia, Maryland 21045
tel 410.997.8900 fax 410.997.9282

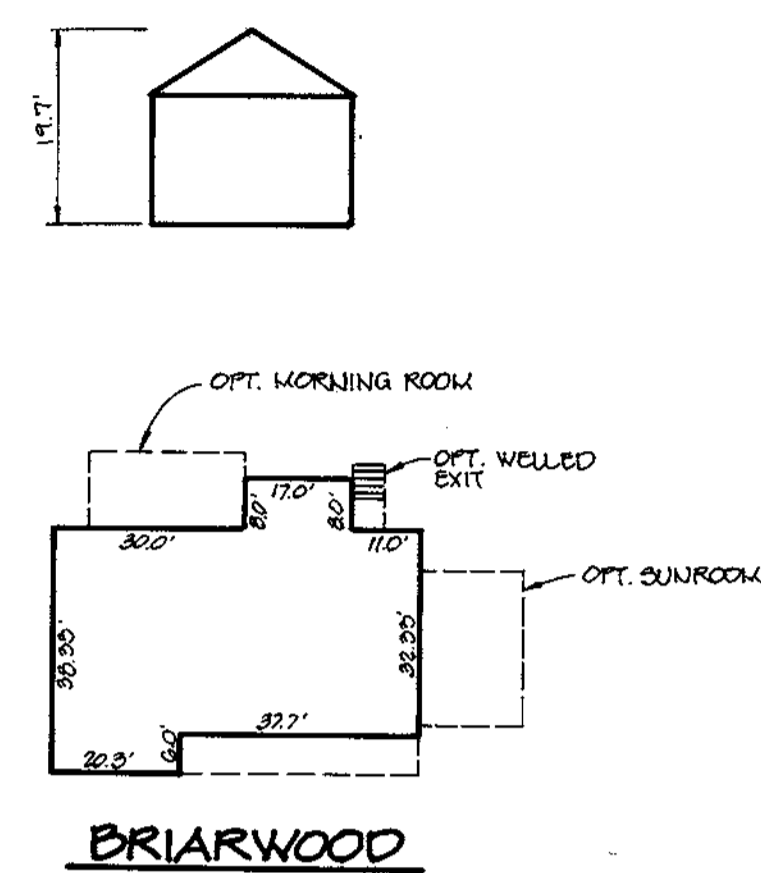
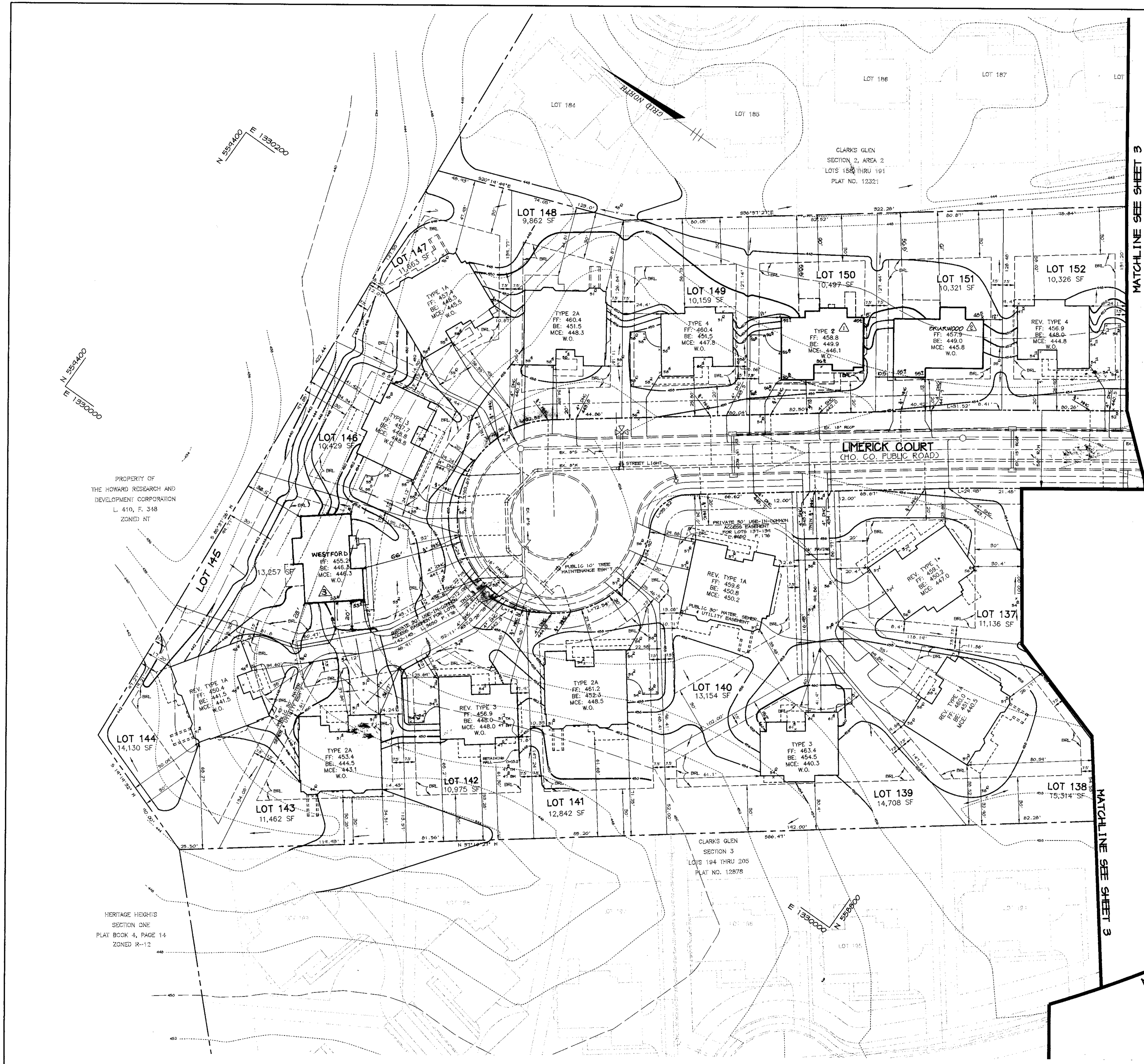
DATE
STATE OF MARYLAND
ARTHUR E. MUEGGE #8707
PROFESSIONAL ENGINEER

S-94-16, P-94-29, F-95-03
NP-94-31, P-95-16, F-96-49

DESIGNED BY : BLN
DRAWN BY : BLN
PROJECT NO : X93212
SDP3.DWG
DATE : JUNE 10, 1998
SCALE : 1" = 30'
DRAWING NO. 3 OF 6



M:\PROJECT\33212\SDP3.dwg Jun 10 09:08:54 1998 RIEMER MUEGGE AND ASSOCIATES, INC.



MATCHLINE SEE SHEET 3

MATCHLINE SEE SHEET 3

MATCHLINE SEE SHEET 2

6-17-99 REV. HOUSE TYPE LOT 145	
APPROVED: HOWARD COUNTY DEPARTMENT OF PLANNING AND ZONING.	
<i>Mark S. P. ...</i> DIRECTOR	7/16/98 DATE
<i>...</i> CHIEF, DEVELOPMENT ENGINEERING DIVISION	7/2/98 DATE
<i>Richard Blood</i> CHIEF, DIVISION OF LAND DEVELOPMENT	7/14/98 DATE
21-00 REV. HOUSE TYPE LOT 151	
22-00 REV. GENERIC BLOCK FOR LOT 150 TO TYPE 2	
DATE NO.	REVISION
OWNER / DEVELOPER WILBEN LIMITED PARTNERSHIP C/O ANDREW L. ISAACSON 5450 WHITELY PARK TERRACE #410 BETHESDA, MD 20814	
PROJECT CLARKS GLEN SECTION 2 AREA 1 LOTS 99-157	
AREA TAX MAP NO. 35 PARCEL 205 5th ELECTION DISTRICT HOWARD COUNTY, MARYLAND	
TITLE SITE DEVELOPMENT PLAN	
RIEMER MUEGGE & ASSOCIATES, INC. ENGINEERING • ENVIRONMENTAL SERVICES • PLANNING • SURVEYING 8818 Centre Park Drive, Columbia, Maryland 21045 tel 410.997.8900 fax 410.997.9282	
	5-94-16, P-94-25, F-95-03 HP-94-31, P-95-16, F-96-08
	DESIGNED BY: ELM
	DRAWN BY: ELM
	PROJECT NO.: X93212 SDP4, DWS
	DATE: JUNE 10, 1998
SCALE: 1" = 30'	DRAWING NO.: 4 OF 8

PROJECT X93212/SDP4 Rev. Jun. 10. 08. 11. 05. 1998 RIEMER MUEGGE AND ASSOCIATES, INC.

PROPERTY OF
THE HOWARD RESEARCH AND
DEVELOPMENT CORPORATION
L. 410, F. 348
ZONED NT

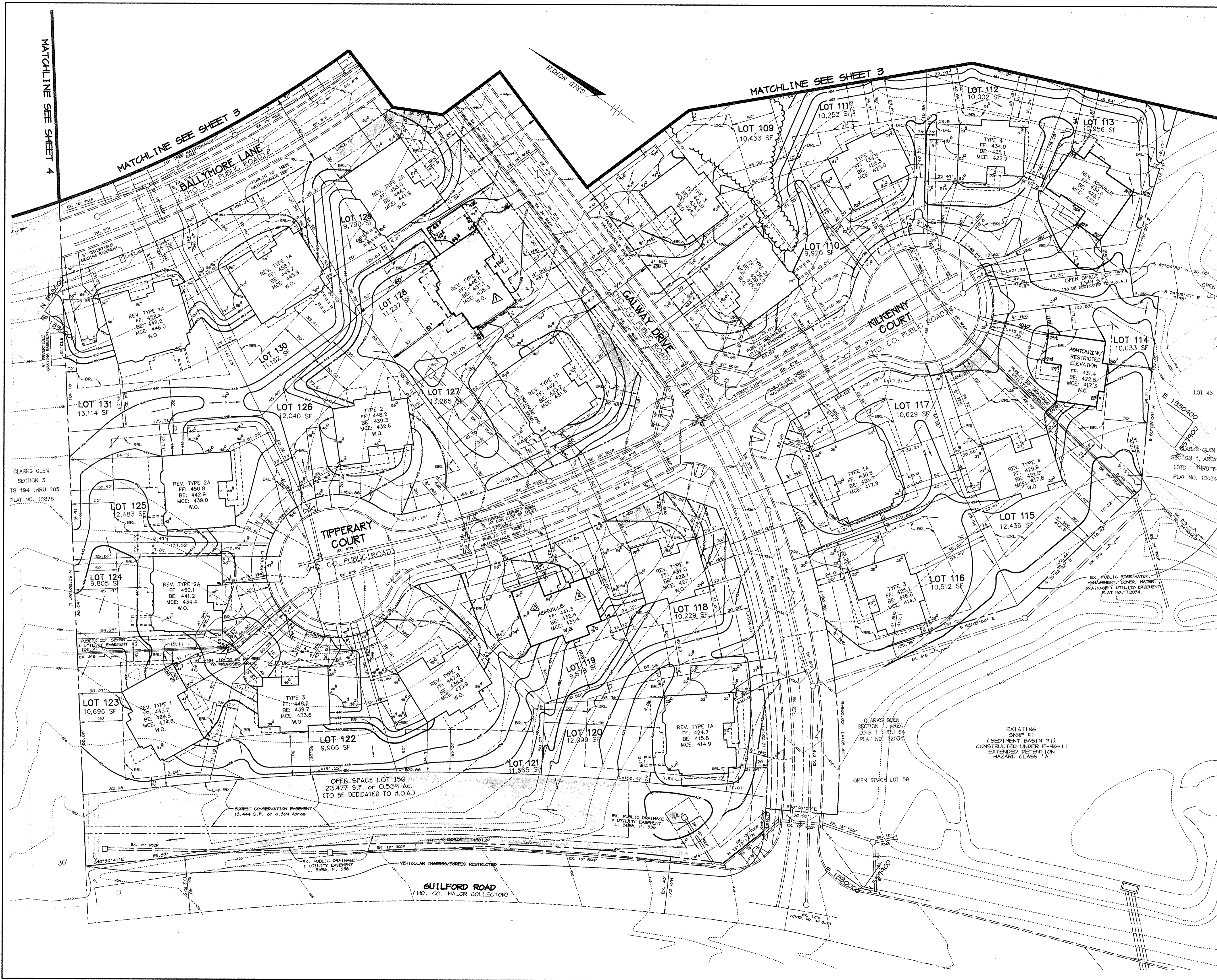
HERITAGE HEIGHTS
SECTION ONE
PLAT BOOK 4, PAGE 14
ZONED R-12

CLARKS GLEN
SECTION 3
LOTS 194 THRU 205
PLAT NO. 12878

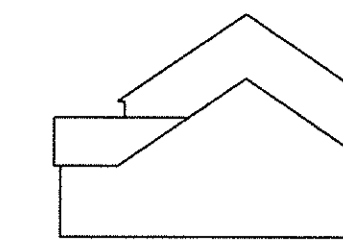
MATCHLINE SEE SHEET 4

MATCHLINE SEE SHEET 3

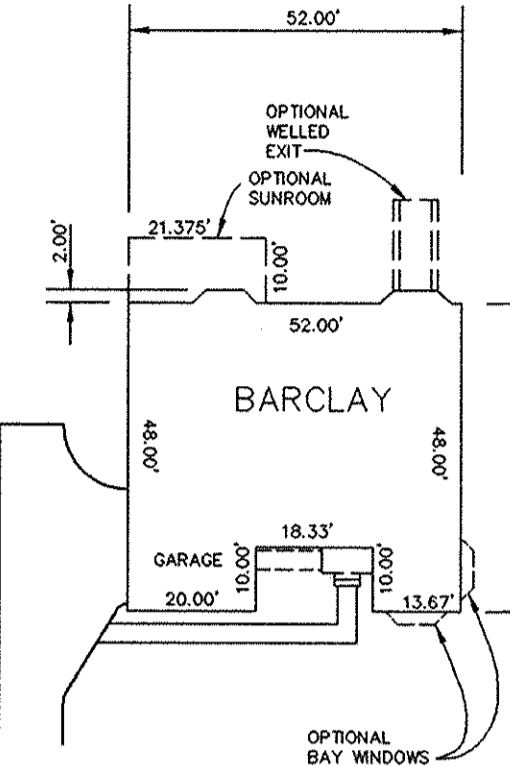
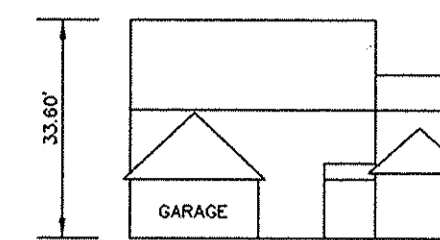
MATCHLINE SEE SHEET 3



SIDE VIEW



FRONT VIEW



HOUSE TYPE
SCALE: 1" = 30'

NOTE:
SEE SHEET 8 OF 8 FOR MORE HOUSE TYPES.

4-18-99 REV. HOUSE TYPE TO ASHVILLE FOR LOT 118
 5-25-99 REV. HOUSE TYPE TO ASHVILLE FOR LOT 110

APPROVED: HOWARD COUNTY DEPARTMENT OF PLANNING AND ZONING.

Mark J. Jangle 7/10/98
 DIRECTOR DATE

Richard Blood 7/12/98
 CHIEF, DEVELOPMENT ENGINEERING DIVISION DATE

Richard Blood 7/14/98
 CHIEF, DIVISION OF LAND DEVELOPMENT DATE

2-3-99 LOT 119: REVISED HOUSE TYPE FROM GENERIC BLOCK TO ROBINHAM HOUSE TYPE
 8/98 REVISED HOUSE TYPE LOT 128
 DATE NO. REVISION

OWNER / DEVELOPER
 MILBEN LIMITED PARTNERSHIP
 C/O ANDREW L. ISAACSON
 5450 NHITELY PARK
 TERRACE #410
 BETHESDA, MD 20814

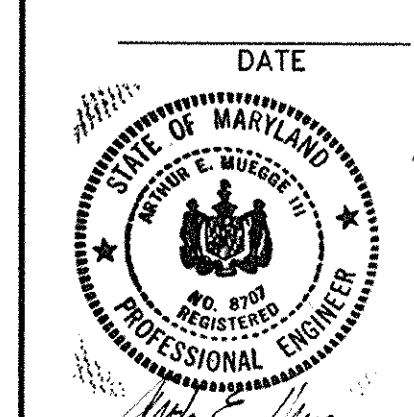
PROJECT
CLARKS GLEN
 SECTION 2 AREA 1
 LOTS 99-157

AREA TAX MAP NO. 35 PARCEL 205
 5th ELECTION DISTRICT
 HOWARD COUNTY, MARYLAND

TITLE
SITE DEVELOPMENT PLAN

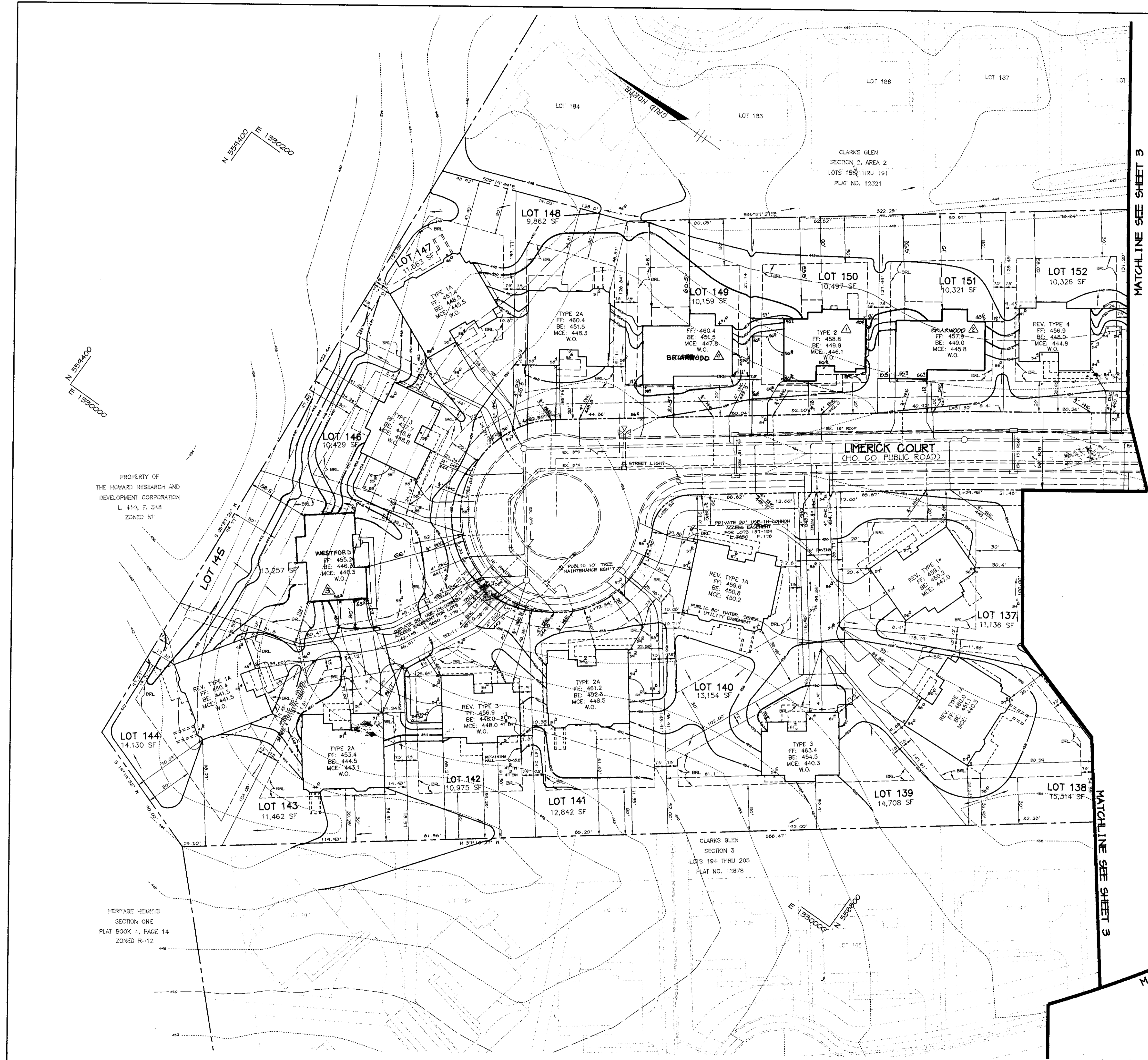
RIEMER MUEGGE & ASSOCIATES, INC.
 ENGINEERING • ENVIRONMENTAL SERVICES • PLANNING • SURVEYING
 8818 Centre Park Drive, Columbia, Maryland 21045
 tel 410.997.8900 fax 410.997.9282

DATE	S-94-16, P-94-25, F-95-03 NP-94-31, P-95-16, F-96-08
DESIGNED BY :	BLN
DRAWN BY :	BLN
PROJECT NO :	X43212 SDP2.DWG
DATE :	JUNE 10, 1998
SCALE :	1" = 30'
DRAWING NO. :	2 OF 8



ARTHUR E. MUEGGE #8707

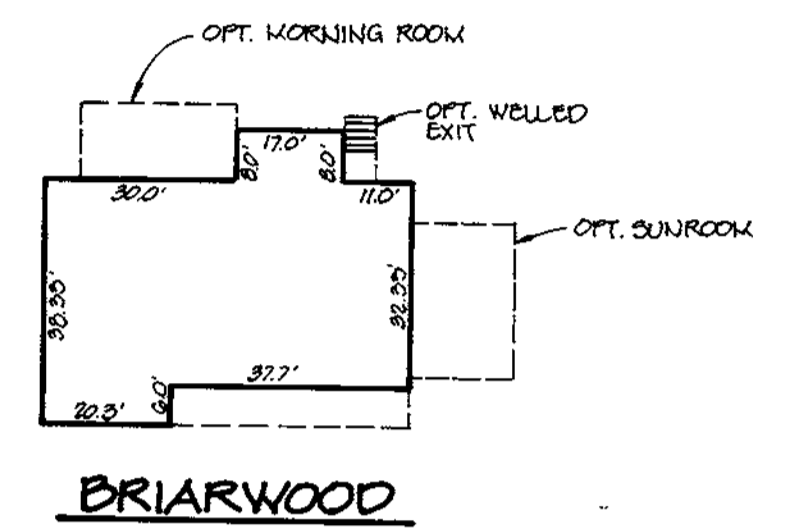
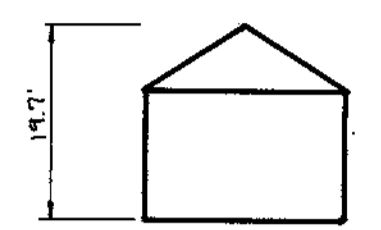
SDP-98-99



MATCHLINE SEE SHEET 3

MATCHLINE SEE SHEET 3

MATCHLINE SEE SHEET 2



7-01-99	REV. HOUSE TYPE LOT 149
6-17-99	REV. HOUSE TYPE LOT 145
APPROVED : HOWARD COUNTY DEPARTMENT OF PLANNING AND ZONING.	
<i>Mark J. Taylor</i>	7/1/98
DIRECTOR	DATE
<i>John P. ...</i>	7/2/98
CHIEF, DEVELOPMENT ENGINEERING DIVISION	DATE
<i>Richard Blood</i>	7/1/98
CHIEF, DIVISION OF LAND DEVELOPMENT	DATE
5-21-00	REV. HOUSE TYPE LOT 151
5-23-00	REV. GENERIC BLOCK FOR LOT 150 TO TYPE 2
DATE NO.	REVISION

OWNER / DEVELOPER	NILBEN LIMITED PARTNERSHIP C/O ANDREW L. ISAACSON 5450 WHITELY PARK TERRACE #410 BETHESDA, MD 20814
PROJECT	CLARKS GLEN SECTION 2 AREA 1 LOTS 99-157
AREA	TAX MAP NO. 35 PARCEL 205 5th ELECTION DISTRICT HOWARD COUNTY, MARYLAND
TITLE	SITE DEVELOPMENT PLAN

RIEMER MUEGGE & ASSOCIATES, INC.
ENGINEERING • ENVIRONMENTAL SERVICES • PLANNING • SURVEYING
8818 Centre Park Drive, Columbia, Maryland 21045
tel 410.997.8900 fax 410.997.9282

	DESIGNED BY : BLN
	DRAWN BY : BLN
	PROJECT NO : X93212 SDP4.DWG
	DATE : JUNE 10, 1998
	SCALE : 1" = 30'

DRAWING NO. 4 OF 8
SDP-98-99

M:\PROJECT\X93212\SDP4 Rev JUN 10 09 11 06 1998 RIEMER MUEGGE AND ASSOCIATES, INC.

PROPERTY OF
THE HOWARD RESEARCH AND
DEVELOPMENT CORPORATION
L 410, F. 348
ZONED NT

HERITAGE HEIGHTS
SECTION ONE
PLAT BOOK 4, PAGE 14
ZONED R-12