

PERMANENT SEEDING NOTES

APPLY TO GRADED OR CLEARED AREAS NOT SUBJECT TO IMMEDIATE FURTHER DISTURBANCE WHERE A PERMANENT LONG-LIVED VEGETATIVE COVER IS NEEDED.

SEEDING PREPARATION: Loosen upper three inches of soil by raking, slaking or other acceptable means before seeding, if not previously loosened.

SOIL AMENDMENTS: In lieu of soil test recommendations, use one of the following schedules:

1) Fertilizer-Apply 2 tons per acre dolomitic limestone (92 lbs./1000 sq.ft.) and 600 lbs. per acre 10-10-10 fertilizer (14 lbs./1000 sq.ft.) before seeding.

2) Acceptable-Apply 2 tons per acre dolomitic limestone (92 lbs./1000 sq.ft.) and 1000 lbs. per acre 10-10-10 fertilizer (23 lbs./1000 sq.ft.) before seeding.

3) Seeding: For periods March 1 thru April 30, and August 1 thru October 15, seed with 60 lbs. per acre (14 lbs./1000 sq.ft.) of Kentucky 31 Tall Fescue.

4) Seeding: For periods March 1 thru April 30, and August 1 thru October 15, seed with 2 1/2 tons per acre (70 to 80 lbs./1000 sq.ft.) of urea.

5) Seeding: For periods March 1 thru April 30, and August 1 thru October 15, seed with 2 1/2 tons per acre (70 to 80 lbs./1000 sq.ft.) of urea.

6) Seeding: For periods March 1 thru April 30, and August 1 thru October 15, seed with 2 1/2 tons per acre (70 to 80 lbs./1000 sq.ft.) of urea.

7) Seeding: For periods March 1 thru April 30, and August 1 thru October 15, seed with 2 1/2 tons per acre (70 to 80 lbs./1000 sq.ft.) of urea.

8) Seeding: For periods March 1 thru April 30, and August 1 thru October 15, seed with 2 1/2 tons per acre (70 to 80 lbs./1000 sq.ft.) of urea.

9) Seeding: For periods March 1 thru April 30, and August 1 thru October 15, seed with 2 1/2 tons per acre (70 to 80 lbs./1000 sq.ft.) of urea.

10) Seeding: For periods March 1 thru April 30, and August 1 thru October 15, seed with 2 1/2 tons per acre (70 to 80 lbs./1000 sq.ft.) of urea.

11) Seeding: For periods March 1 thru April 30, and August 1 thru October 15, seed with 2 1/2 tons per acre (70 to 80 lbs./1000 sq.ft.) of urea.

12) Seeding: For periods March 1 thru April 30, and August 1 thru October 15, seed with 2 1/2 tons per acre (70 to 80 lbs./1000 sq.ft.) of urea.

13) Seeding: For periods March 1 thru April 30, and August 1 thru October 15, seed with 2 1/2 tons per acre (70 to 80 lbs./1000 sq.ft.) of urea.

14) Seeding: For periods March 1 thru April 30, and August 1 thru October 15, seed with 2 1/2 tons per acre (70 to 80 lbs./1000 sq.ft.) of urea.

15) Seeding: For periods March 1 thru April 30, and August 1 thru October 15, seed with 2 1/2 tons per acre (70 to 80 lbs./1000 sq.ft.) of urea.

16) Seeding: For periods March 1 thru April 30, and August 1 thru October 15, seed with 2 1/2 tons per acre (70 to 80 lbs./1000 sq.ft.) of urea.

17) Seeding: For periods March 1 thru April 30, and August 1 thru October 15, seed with 2 1/2 tons per acre (70 to 80 lbs./1000 sq.ft.) of urea.

18) Seeding: For periods March 1 thru April 30, and August 1 thru October 15, seed with 2 1/2 tons per acre (70 to 80 lbs./1000 sq.ft.) of urea.

19) Seeding: For periods March 1 thru April 30, and August 1 thru October 15, seed with 2 1/2 tons per acre (70 to 80 lbs./1000 sq.ft.) of urea.

20) Seeding: For periods March 1 thru April 30, and August 1 thru October 15, seed with 2 1/2 tons per acre (70 to 80 lbs./1000 sq.ft.) of urea.

21.0 STANDARDS AND SPECIFICATIONS FOR TOPSOIL

Definition: For sites having disturbed areas over 5 acres, on soil meeting topsoil specifications, shall test results indicating texture and lime amendments required to bring the soil into compliance with the following:

1. A minimum of 48 hours notice must be given to the Howard County Department of Inspection, Planning and Zoning, and the Soil Conservation District prior to the start of any construction.

2. All vegetative and structural protection are to be installed in accordance with the 1984 MARYLAND STANDARDS AND SPECIFICATIONS FOR SOIL EROSION AND SEDIMENT CONTROL.

3. Following initial soil disturbance or re-disturbance, permanent or temporary stabilization shall be completed within:

a) 1 calendar day for all permanent sediment control structures, unless otherwise specified.

b) 14 days for all other disturbed or graded areas on the project.

4. All sediment traps/basins shown must be fenced and warning signs placed in accordance with the 1984 MARYLAND STANDARDS AND SPECIFICATIONS FOR SOIL EROSION AND SEDIMENT CONTROL.

5. All sediment control structures are to remain in place and are to be maintained in operative condition until permission for their removal has been obtained from the Howard County Sediment Control Inspector.

6. All sediment control structures are to remain in place and are to be maintained in operative condition until permission for their removal has been obtained from the Howard County Sediment Control Inspector.

7. All sediment control structures are to remain in place and are to be maintained in operative condition until permission for their removal has been obtained from the Howard County Sediment Control Inspector.

8. All sediment control structures are to remain in place and are to be maintained in operative condition until permission for their removal has been obtained from the Howard County Sediment Control Inspector.

9. All sediment control structures are to remain in place and are to be maintained in operative condition until permission for their removal has been obtained from the Howard County Sediment Control Inspector.

10. All sediment control structures are to remain in place and are to be maintained in operative condition until permission for their removal has been obtained from the Howard County Sediment Control Inspector.

11. All sediment control structures are to remain in place and are to be maintained in operative condition until permission for their removal has been obtained from the Howard County Sediment Control Inspector.

12. All sediment control structures are to remain in place and are to be maintained in operative condition until permission for their removal has been obtained from the Howard County Sediment Control Inspector.

13. All sediment control structures are to remain in place and are to be maintained in operative condition until permission for their removal has been obtained from the Howard County Sediment Control Inspector.

14. All sediment control structures are to remain in place and are to be maintained in operative condition until permission for their removal has been obtained from the Howard County Sediment Control Inspector.

15. All sediment control structures are to remain in place and are to be maintained in operative condition until permission for their removal has been obtained from the Howard County Sediment Control Inspector.

16. All sediment control structures are to remain in place and are to be maintained in operative condition until permission for their removal has been obtained from the Howard County Sediment Control Inspector.

17. All sediment control structures are to remain in place and are to be maintained in operative condition until permission for their removal has been obtained from the Howard County Sediment Control Inspector.

18. All sediment control structures are to remain in place and are to be maintained in operative condition until permission for their removal has been obtained from the Howard County Sediment Control Inspector.

19. All sediment control structures are to remain in place and are to be maintained in operative condition until permission for their removal has been obtained from the Howard County Sediment Control Inspector.

20. All sediment control structures are to remain in place and are to be maintained in operative condition until permission for their removal has been obtained from the Howard County Sediment Control Inspector.

SEDIMENT AND EROSION CONTROL NOTES

1. A minimum of 48 hours notice must be given to the Howard County Department of Inspection, Planning and Zoning, and the Soil Conservation District prior to the start of any construction.

2. All vegetative and structural protection are to be installed in accordance with the 1984 MARYLAND STANDARDS AND SPECIFICATIONS FOR SOIL EROSION AND SEDIMENT CONTROL.

3. Following initial soil disturbance or re-disturbance, permanent or temporary stabilization shall be completed within:

a) 1 calendar day for all permanent sediment control structures, unless otherwise specified.

b) 14 days for all other disturbed or graded areas on the project.

4. All sediment traps/basins shown must be fenced and warning signs placed in accordance with the 1984 MARYLAND STANDARDS AND SPECIFICATIONS FOR SOIL EROSION AND SEDIMENT CONTROL.

5. All sediment control structures are to remain in place and are to be maintained in operative condition until permission for their removal has been obtained from the Howard County Sediment Control Inspector.

6. All sediment control structures are to remain in place and are to be maintained in operative condition until permission for their removal has been obtained from the Howard County Sediment Control Inspector.

7. All sediment control structures are to remain in place and are to be maintained in operative condition until permission for their removal has been obtained from the Howard County Sediment Control Inspector.

8. All sediment control structures are to remain in place and are to be maintained in operative condition until permission for their removal has been obtained from the Howard County Sediment Control Inspector.

9. All sediment control structures are to remain in place and are to be maintained in operative condition until permission for their removal has been obtained from the Howard County Sediment Control Inspector.

10. All sediment control structures are to remain in place and are to be maintained in operative condition until permission for their removal has been obtained from the Howard County Sediment Control Inspector.

11. All sediment control structures are to remain in place and are to be maintained in operative condition until permission for their removal has been obtained from the Howard County Sediment Control Inspector.

12. All sediment control structures are to remain in place and are to be maintained in operative condition until permission for their removal has been obtained from the Howard County Sediment Control Inspector.

13. All sediment control structures are to remain in place and are to be maintained in operative condition until permission for their removal has been obtained from the Howard County Sediment Control Inspector.

14. All sediment control structures are to remain in place and are to be maintained in operative condition until permission for their removal has been obtained from the Howard County Sediment Control Inspector.

15. All sediment control structures are to remain in place and are to be maintained in operative condition until permission for their removal has been obtained from the Howard County Sediment Control Inspector.

16. All sediment control structures are to remain in place and are to be maintained in operative condition until permission for their removal has been obtained from the Howard County Sediment Control Inspector.

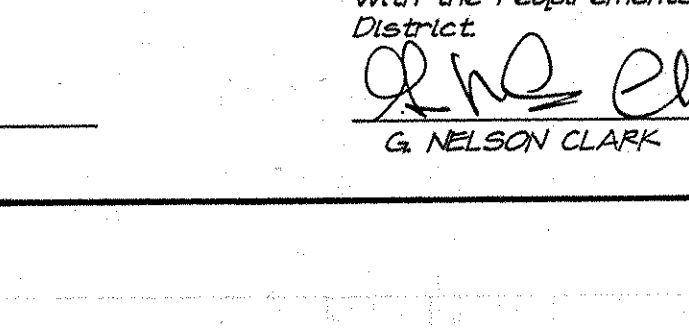
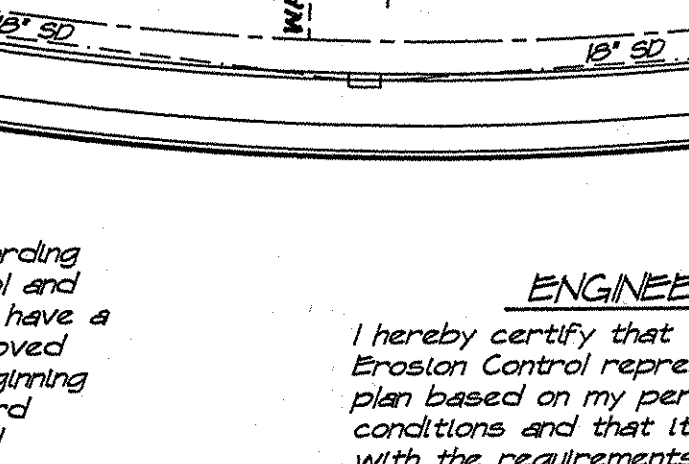
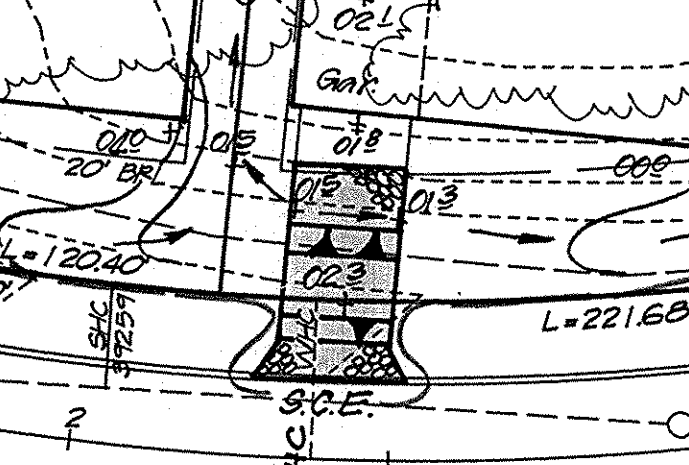
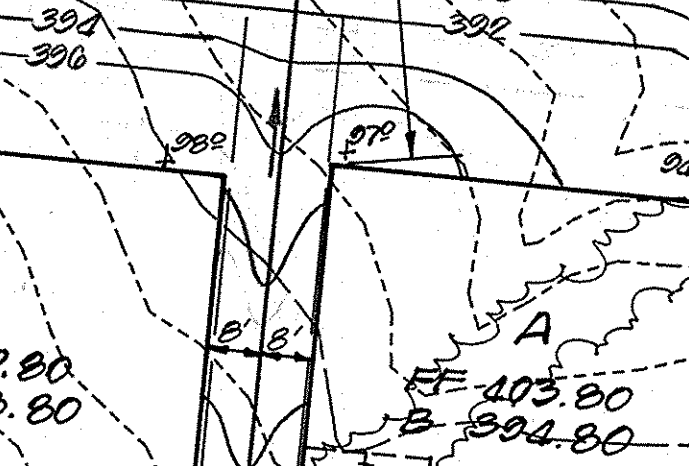
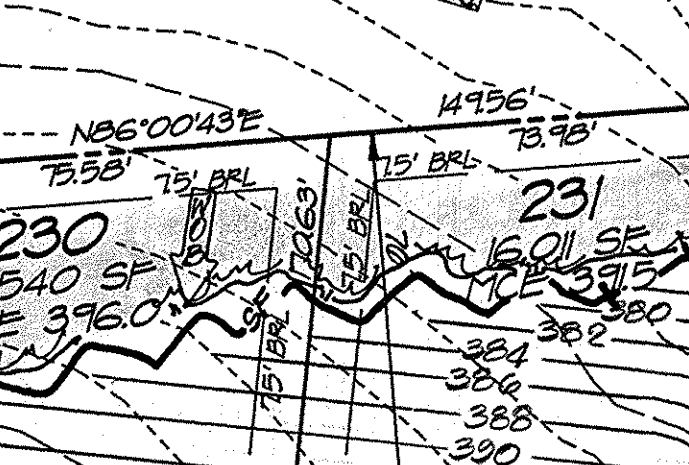
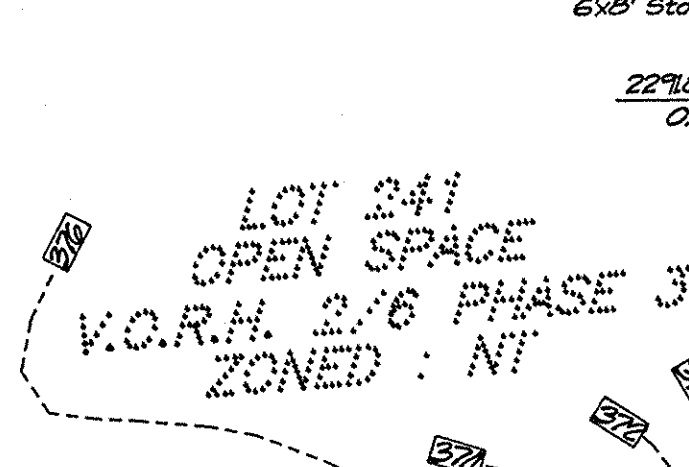
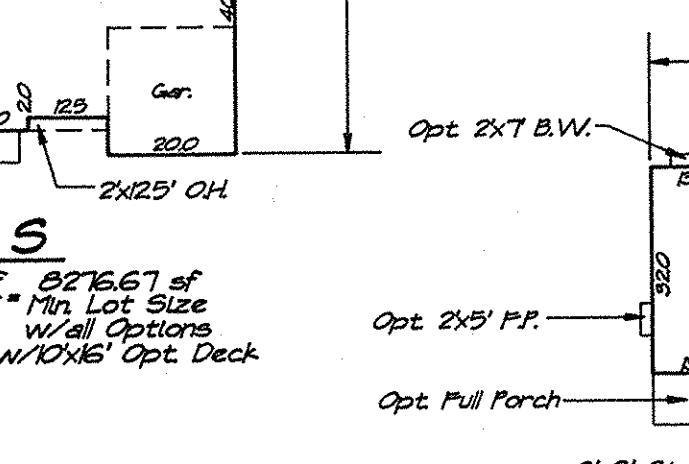
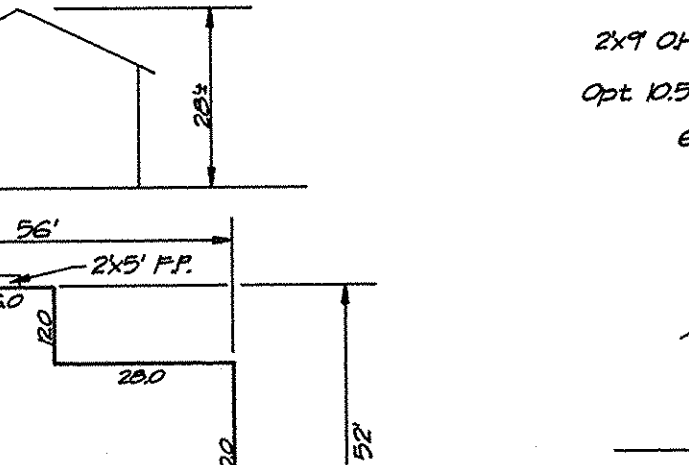
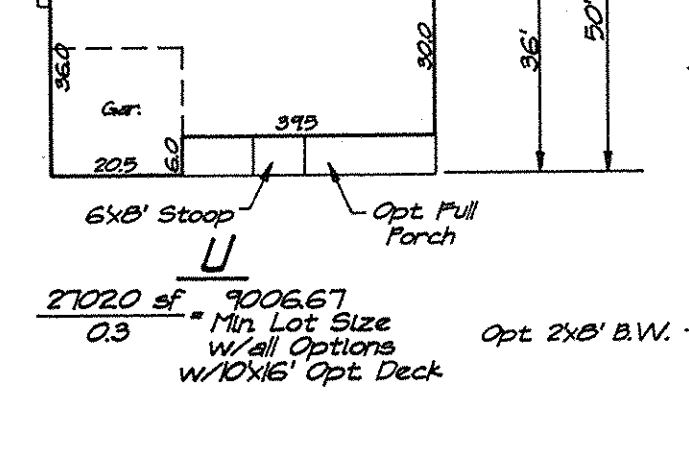
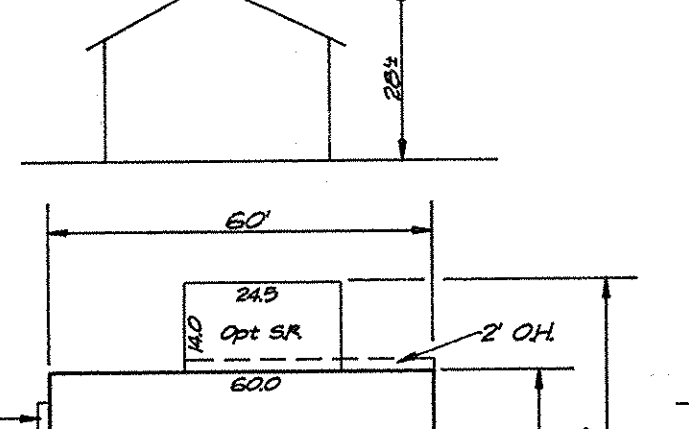
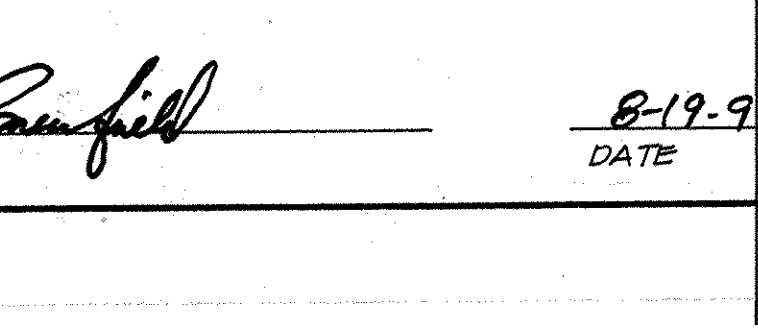
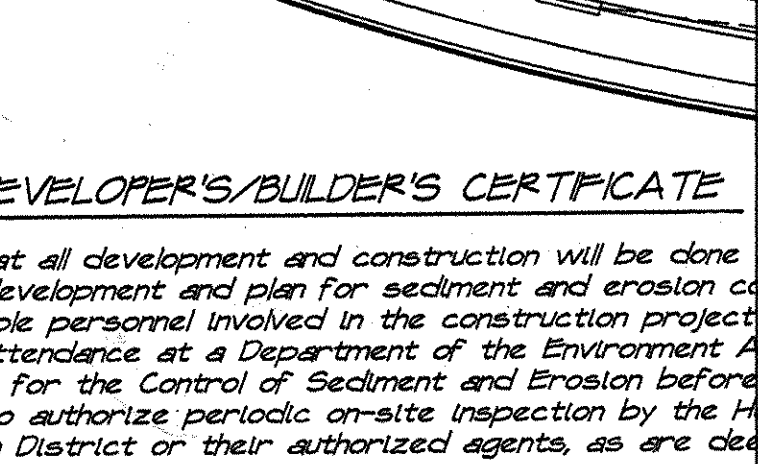
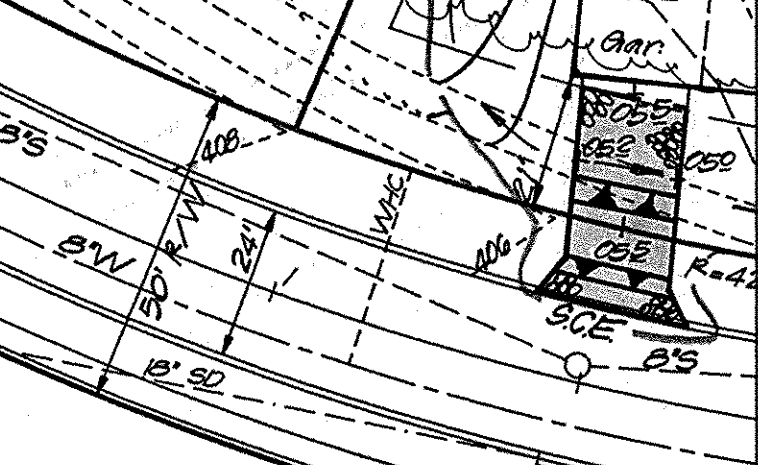
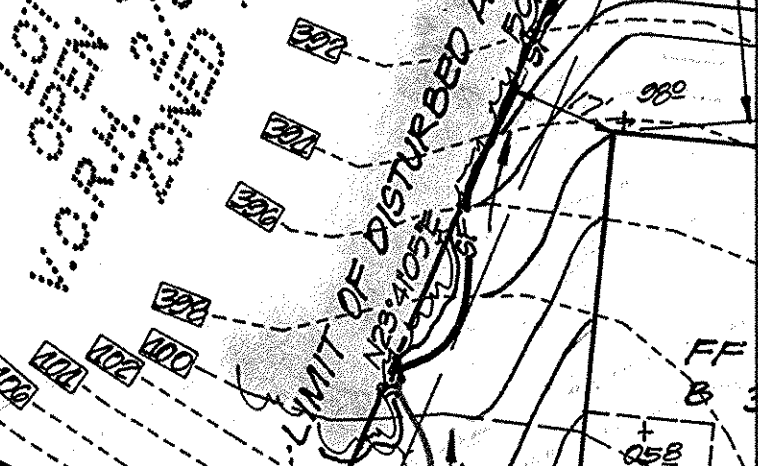
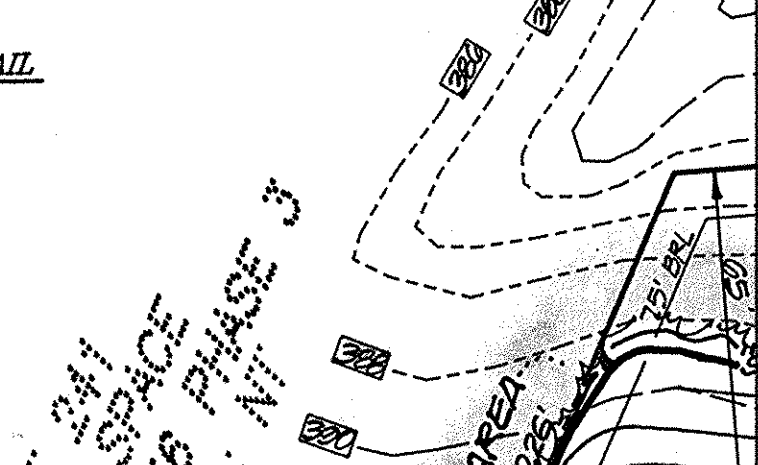
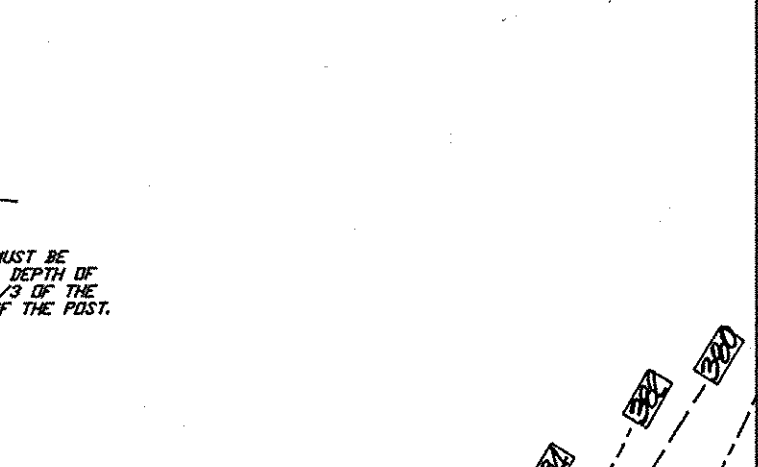
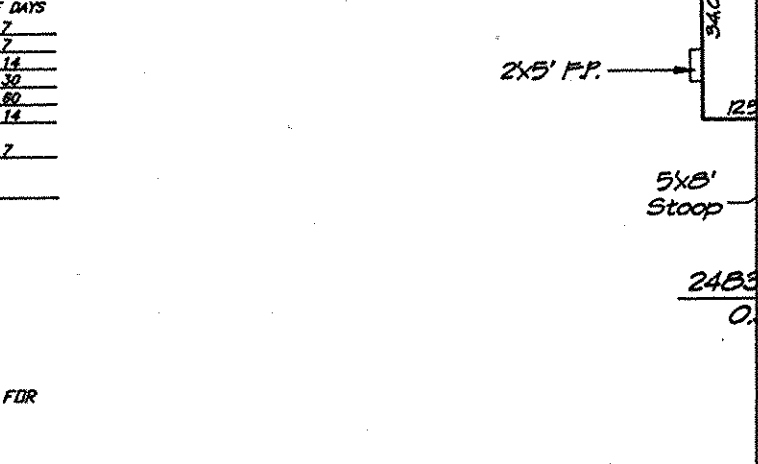
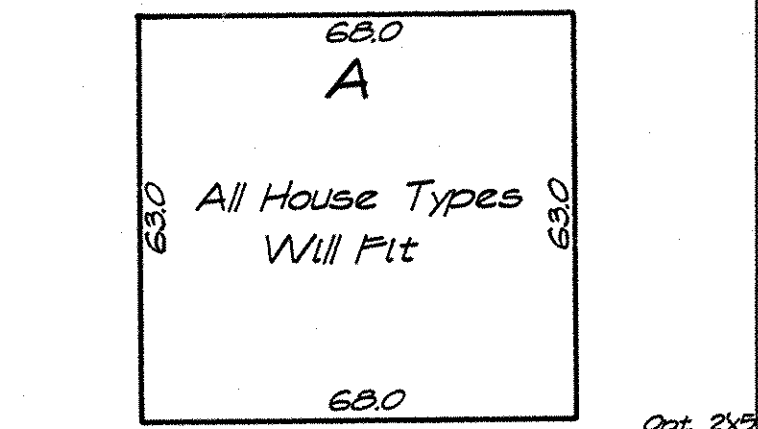
17. All sediment control structures are to remain in place and are to be maintained in operative condition until permission for their removal has been obtained from the Howard County Sediment Control Inspector.

18. All sediment control structures are to remain in place and are to be maintained in operative condition until permission for their removal has been obtained from the Howard County Sediment Control Inspector.

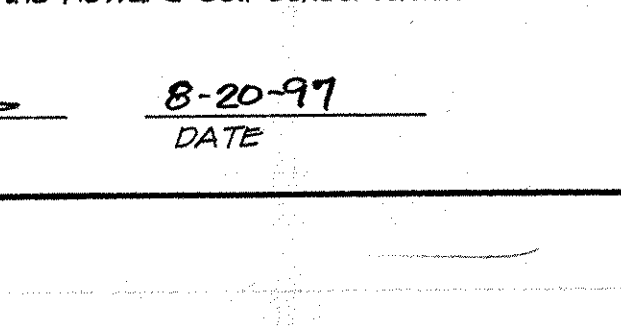
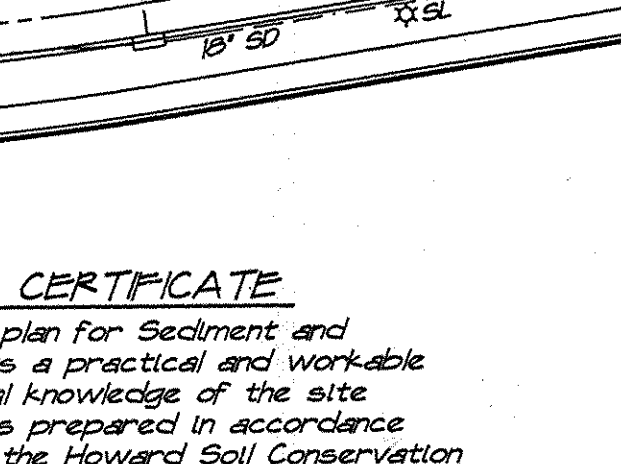
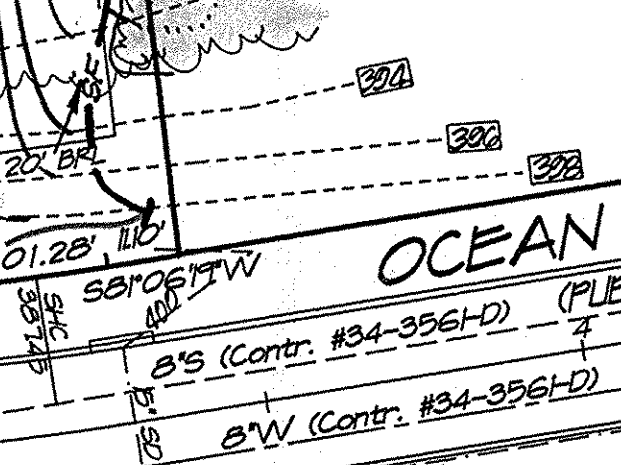
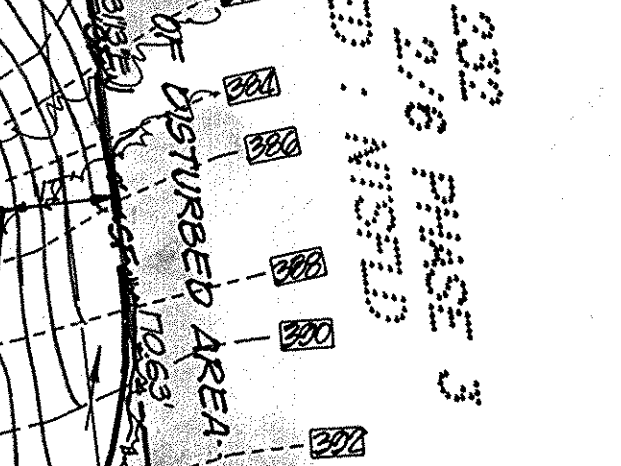
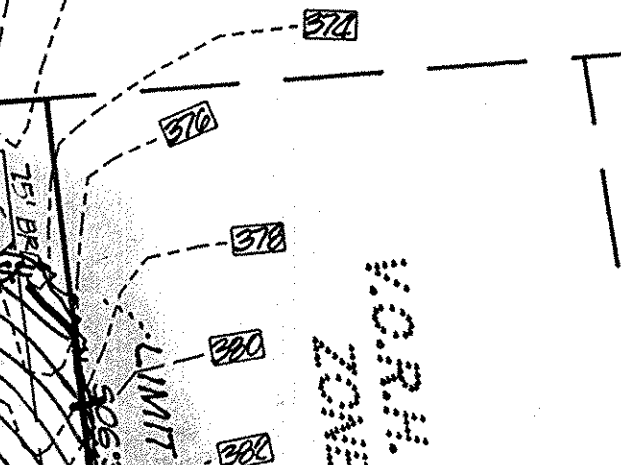
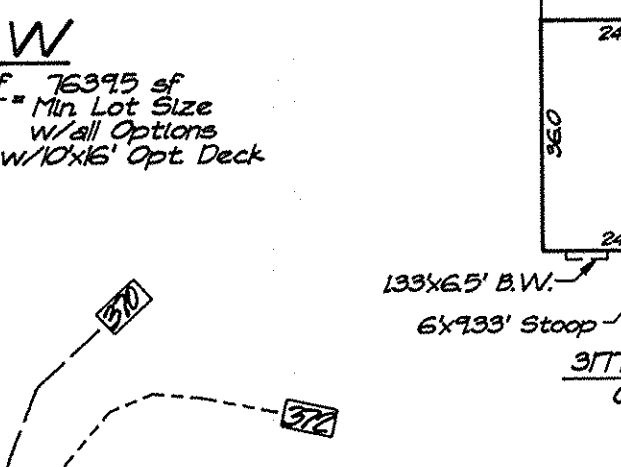
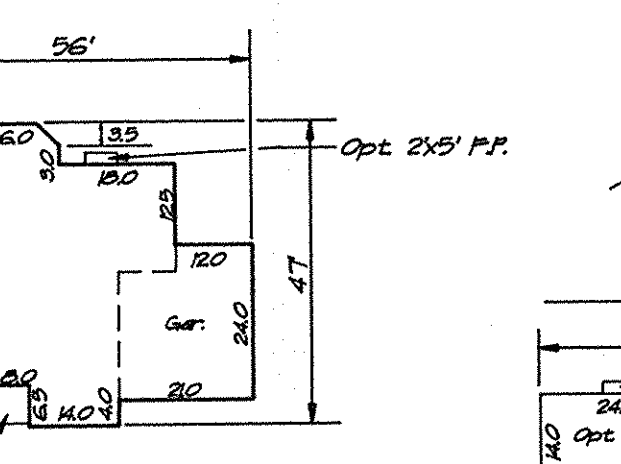
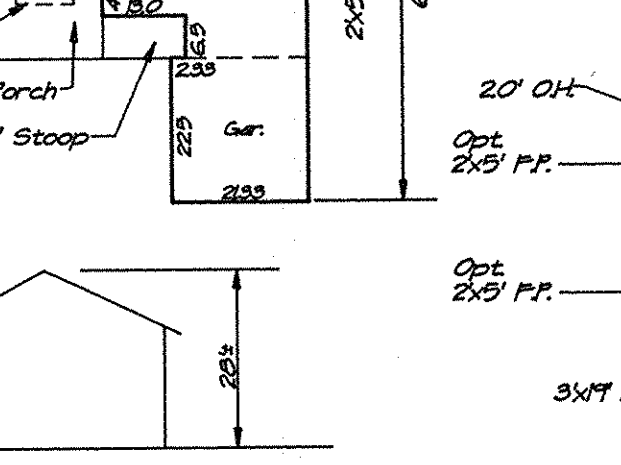
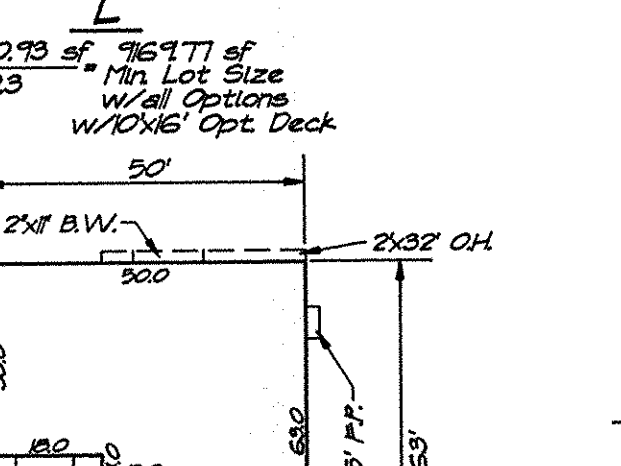
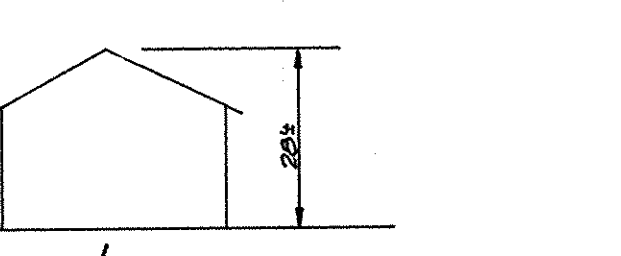
19. All sediment control structures are to remain in place and are to be maintained in operative condition until permission for their removal has been obtained from the Howard County Sediment Control Inspector.

20. All sediment control structures are to remain in place and are to be maintained in operative condition until permission for their removal has been obtained from the Howard County Sediment Control Inspector.

21. All sediment control structures are to remain in place and are to be maintained in operative condition until permission for their removal has been obtained from the Howard County Sediment Control Inspector.

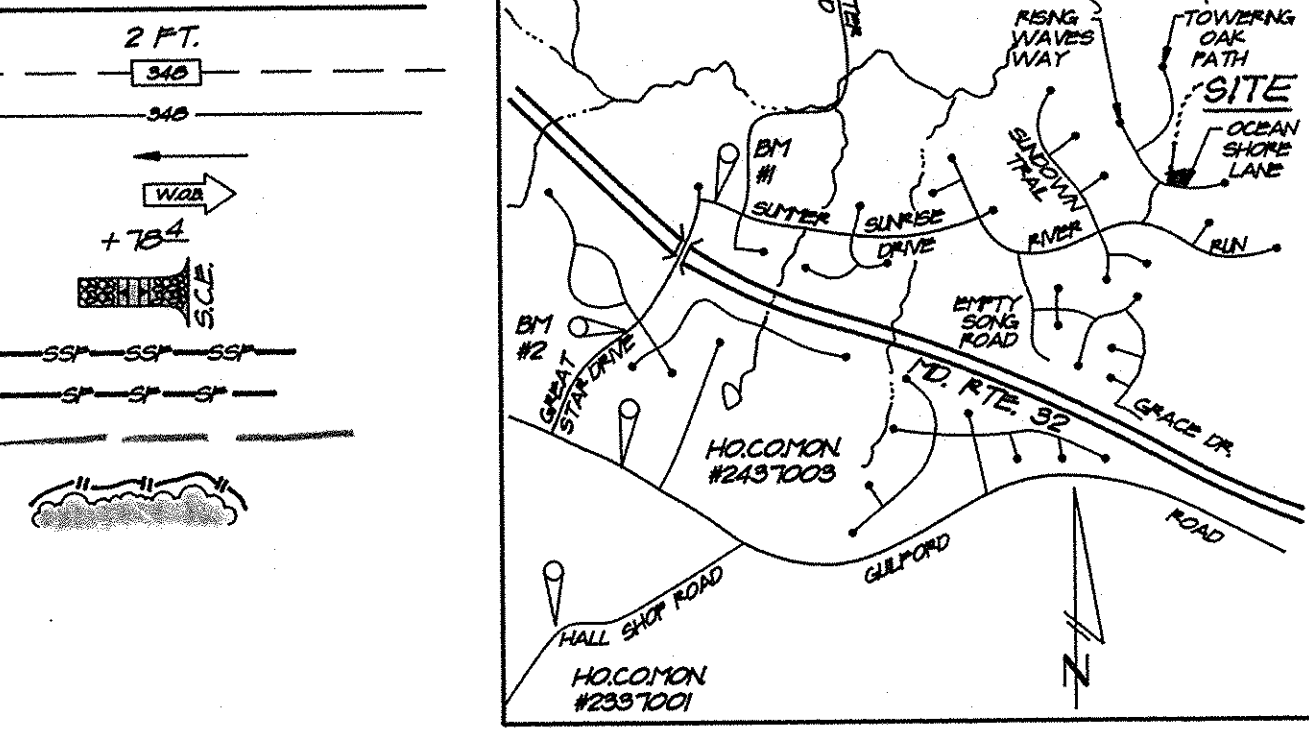
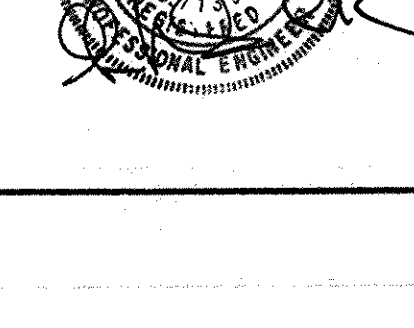
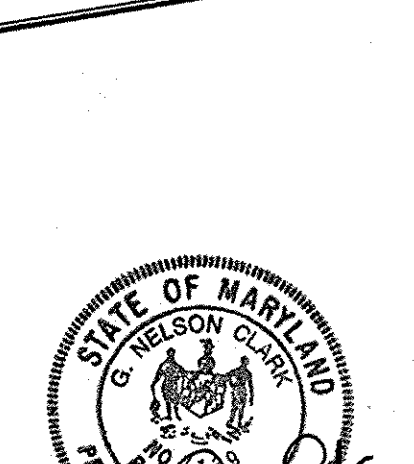
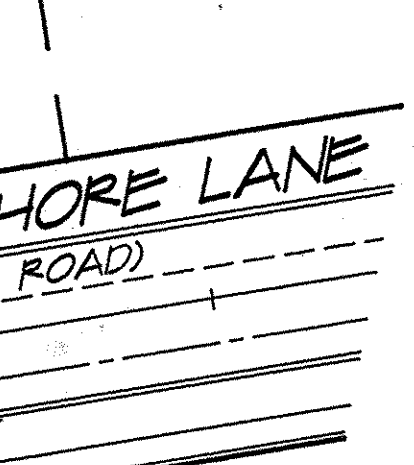
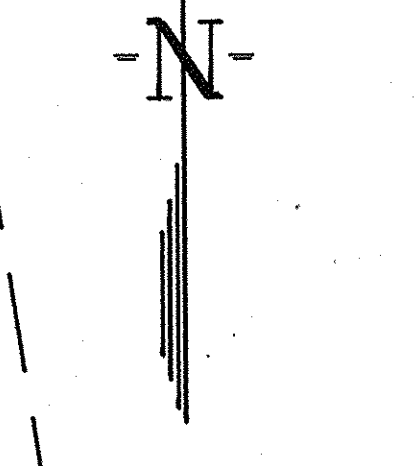
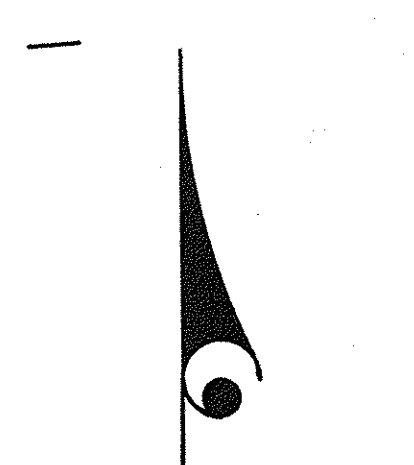
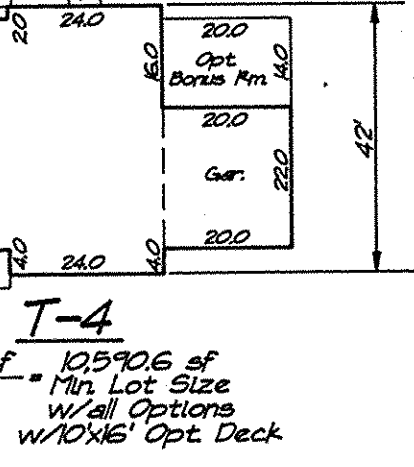
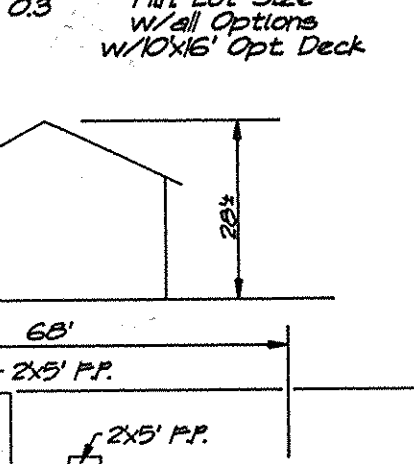
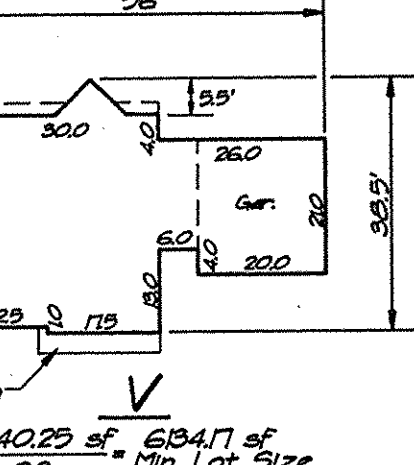
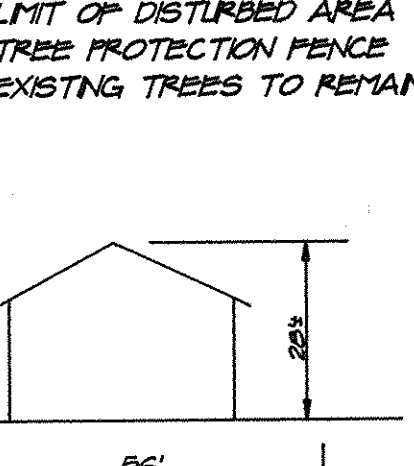


ADDRESS CHART table with columns: LOT NUMBER, STREET ADDRESS



LEGEND

CONTOUR INTERVAL EXISTING CONTOUR PROPOSED CONTOUR DIRECTION OF DRAINAGE WALK OUT BASINMENT SPOT ELEVATION STABILIZED CONSTRUCTION ENTRANCE SUPER SILT FENCE Silt Fence LIMIT OF DISTURBED AREA TREE PROTECTION FENCE EXISTING TREES TO REMAIN



VICINITY MAP Scale: 1:2000'

GENERAL NOTES:

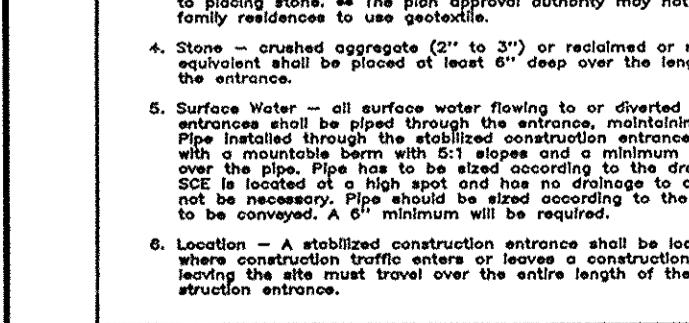
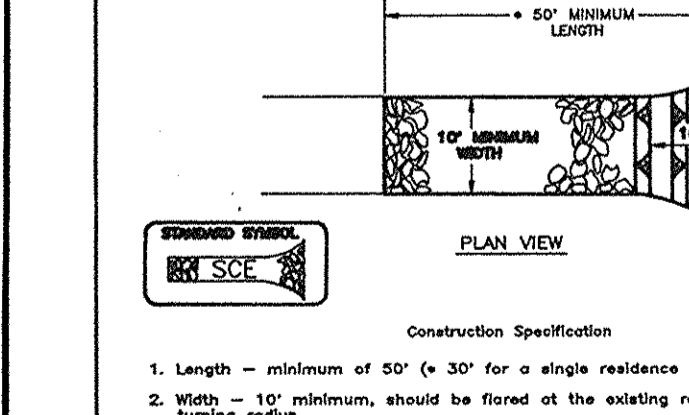
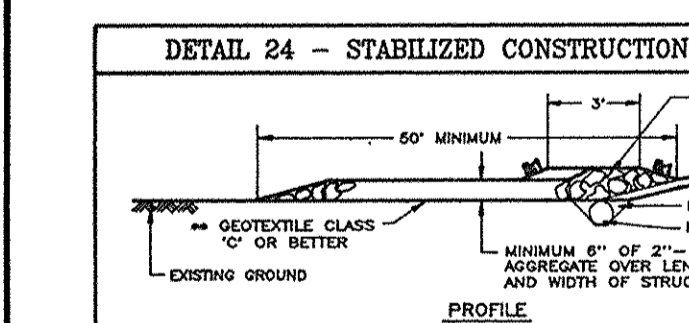
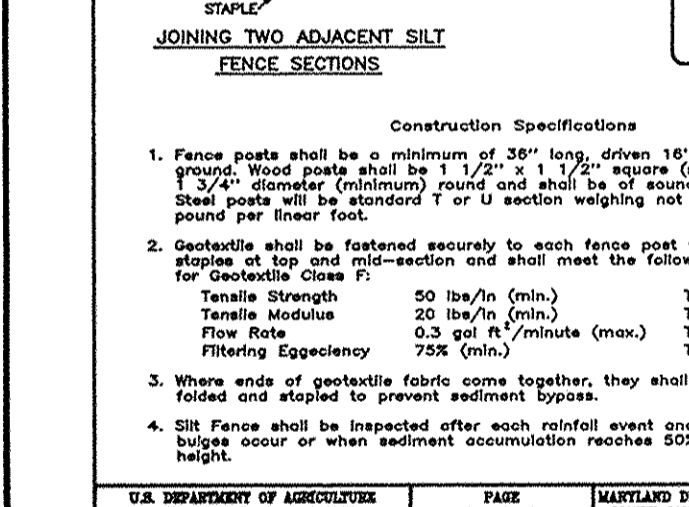
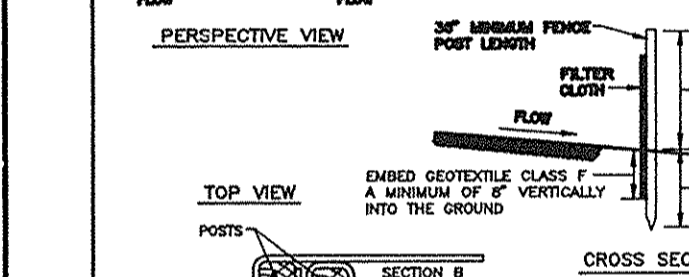
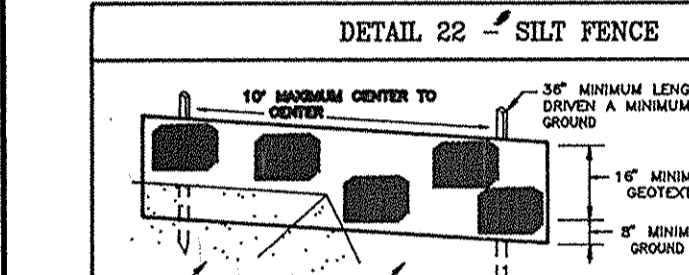
- 1. Subject property is zoned: N.T.S.P.L.D. per 10-18-93 Comprehensive Zoning Plan.
2. The total area included in this submission is: 0.72 Acres.
3. The total number of lots included in this submission is: 2.
4. Improvement to property: Single Family Detached.
5. The maximum lot coverage permitted is: 30%.
6. Department of Planning and Zoning reference file numbers are: S-7-03, P-7-11, P-7-12, P-7-13, P-7-14, P-7-15, P-7-16, P-7-17, P-7-18, P-7-19, P-7-20, P-7-21, P-7-22, P-7-23, P-7-24, P-7-25, P-7-26, P-7-27, P-7-28, P-7-29, P-7-30, P-7-31, P-7-32, P-7-33, P-7-34, P-7-35, P-7-36, P-7-37, P-7-38, P-7-39, P-7-40, P-7-41, P-7-42, P-7-43, P-7-44, P-7-45, P-7-46, P-7-47, P-7-48, P-7-49, P-7-50, P-7-51, P-7-52, P-7-53, P-7-54, P-7-55, P-7-56, P-7-57, P-7-58, P-7-59, P-7-60, P-7-61, P-7-62, P-7-63, P-7-64, P-7-65, P-7-66, P-7-67, P-7-68, P-7-69, P-7-70, P-7-71, P-7-72, P-7-73, P-7-74, P-7-75, P-7-76, P-7-77, P-7-78, P-7-79, P-7-80, P-7-81, P-7-82, P-7-83, P-7-84, P-7-85, P-7-86, P-7-87, P-7-88, P-7-89, P-7-90, P-7-91, P-7-92, P-7-93, P-7-94, P-7-95, P-7-96, P-7-97, P-7-98, P-7-99, P-7-100, P-7-101, P-7-102, P-7-103, P-7-104, P-7-105, P-7-106, P-7-107, P-7-108, P-7-109, P-7-110, P-7-111, P-7-112, P-7-113, P-7-114, P-7-115, P-7-116, P-7-117, P-7-118, P-7-119, P-7-120, P-7-121, P-7-122, P-7-123, P-7-124, P-7-125, P-7-126, P-7-127, P-7-128, P-7-129, P-7-130, P-7-131, P-7-132, P-7-133, P-7-134, P-7-135, P-7-136, P-7-137, P-7-138, P-7-139, P-7-140, P-7-141, P-7-142, P-7-143, P-7-144, P-7-145, P-7-146, P-7-147, P-7-148, P-7-149, P-7-150, P-7-151, P-7-152, P-7-153, P-7-154, P-7-155, P-7-156, P-7-157, P-7-158, P-7-159, P-7-160, P-7-161, P-7-162, P-7-163, P-7-164, P-7-165, P-7-166, P-7-167, P-7-168, P-7-169, P-7-170, P-7-171, P-7-172, P-7-173, P-7-174, P-7-175, P-7-176, P-7-177, P-7-178, P-7-179, P-7-180, P-7-181, P-7-182, P-7-183, P-7-184, P-7-185, P-7-186, P-7-187, P-7-188, P-7-189, P-7-190, P-7-191, P-7-192, P-7-193, P-7-194, P-7-195, P-7-196, P-7-197, P-7-198, P-7-199, P-7-200, P-7-201, P-7-202, P-7-203, P-7-204, P-7-205, P-7-206, P-7-207, P-7-208, P-7-209, P-7-210, P-7-211, P-7-212, P-7-213, P-7-214, P-7-215, P-7-216, P-7-217, P-7-218, P-7-219, P-7-220, P-7-221, P-7-222, P-7-223, P-7-224, P-7-225, P-7-226, P-7-227, P-7-228, P-7-229, P-7-230, P-7-231, P-7-232, P-7-233, P-7-234, P-7-235, P-7-236, P-7-237, P-7-238, P-7-239, P-7-240, P-7-241, P-7-242, P-7-243, P-7-244, P-7-245, P-7-246, P-7-247, P-7-248, P-7-249, P-7-250, P-7-251, P-7-252, P-7-253, P-7-254, P-7-255, P-7-256, P-7-257, P-7-258, P-7-259, P-7-260, P-7-261, P-7-262, P-7-263, P-7-264, P-7-265, P-7-266, P-7-267, P-7-268, P-7-269, P-7-270, P-7-271, P-7-272, P-7-273, P-7-274, P-7-275, P-7-276, P-7-277, P-7-278, P-7-279, P-7-280, P-7-281, P-7-282, P-7-283, P-7-284, P-7-285, P-7-286, P-7-287, P-7-288, P-7-289, P-7-290, P-7-291, P-7-292, P-7-293, P-7-294, P-7-295, P-7-296, P-7-297, P-7-298, P-7-299, P-7-300, P-7-301, P-7-302, P-7-303, P-7-304, P-7-305, P-7-306, P-7-307, P-7-308, P-7-309, P-7-310, P-7-311, P-7-312, P-7-313, P-7-314, P-7-315, P-7-316, P-7-317, P-7-318, P-7-319, P-7-320, P-7-321, P-7-322, P-7-323, P-7-324, P-7-325, P-7-326, P-7-327, P-7-328, P-7-329, P-7-330, P-7-331, P-7-332, P-7-333, P-7-334, P-7-335, P-7-336, P-7-337, P-7-338, P-7-339, P-7-340, P-7-341, P-7-342, P-7-343, P-7-344, P-7-345, P-7-346, P-7-347, P-7-348, P-7-349, P-7-350, P-7-351, P-7-352, P-7-353, P-7-354, P-7-355, P-7-356, P-7-357, P-7-358, P-7-359, P-7-360, P-7-361, P-7-362, P-7-363, P-7-364, P-7-365, P-7-366, P-7-367, P-7-368, P-7-369, P-7-370, P-7-371, P-7-372, P-7-373, P-7-374, P-7-375, P-7-376, P-7-377, P-7-378, P-7-379, P-7-380, P-7-381, P-7-382, P-7-383, P-7-384, P-7-385, P-7-386, P-7-387, P-7-388, P-7-389, P-7-390, P-7-391, P-7-392, P-7-393, P-7-394, P-7-395, P-7-396, P-7-397, P-7-398, P-7-399, P-7-400, P-7-401, P-7-402, P-7-403, P-7-404, P-7-405, P-7-406, P-7-407, P-7-408, P-7-409, P-7-410, P-7-411, P-7-412, P-7-413, P-7-414, P-7-415, P-7-416, P-7-417, P-7-418, P-7-419, P-7-420, P-7-421, P-7-422, P-7-423, P-7-424, P-7-425, P-7-426, P-7-427, P-7-428, P-7-429, P-7-430, P-7-431, P-7-432, P-7-433, P-7-434, P-7-435, P-7-436, P-7-437, P-7-438, P-7-439, P-7-440, P-7-441, P-7-442, P-7-443, P-7-444, P-7-445, P-7-446, P-7-447, P-7-448, P-7-449, P-7-450, P-7-451, P-7-452, P-7-453, P-7-454, P-7-455, P-7-456, P-7-457, P-7-458, P-7-459, P-7-460, P-7-461, P-7-462, P-7-463, P-7-464, P-7-465, P-7-466, P-7-467, P-7-468, P-7-469, P-7-470, P-7-471, P-7-472, P-7-473, P-7-474, P-7-475, P-7-476, P-7-477, P-7-478, P-7-479, P-7-480, P-7-481, P-7-482, P-7-483, P-7-484, P-7-485, P-7-486, P-7-487, P-7-488, P-7-489, P-7-490, P-7-491, P-7-492, P-7-493, P-7-494, P-7-495, P-7-496, P-7-497, P-7-498, P-7-499, P-7-500, P-7-501, P-7-502, P-7-503, P-7-504, P-7-505, P-7-506, P-7-507, P-7-508, P-7-509, P-7-510, P-7-511, P-7-512, P-7-513, P-7-514, P-7-515, P-7-516, P-7-517, P-7-518, P-7-519, P-7-520, P-7-521, P-7-522, P-7-523, P-7-524, P-7-525, P-7-526, P-7-527, P-7-528, P-7-529, P-7-530, P-7-531, P-7-532, P-7-533, P-7-534, P-7-535, P-7-536, P-7-537, P-7-538, P-7-539, P-7-540, P-7-541, P-7-542, P-7-543, P-7-544, P-7-545, P



**PERMANENT SEEDING NOTES**  
 APPLY TO GRADED OR CLEARED AREAS NOT SUBJECT TO IMMEDIATE FURTHER DISTURBANCE WHERE A PERMANENT LONG-LIVED VEGETATIVE COVER IS DESIRED.  
 SEEDING PREPARATION: Loosen upper three inches of soil by raking, digging or other acceptable means before seeding, if not previously loosened.  
 SOIL AMENDMENTS: In lieu of soil test recommendations, use one of the following schedules:  
 1) Pre-seeding Apply 2 tons per acre dolomitic limestone (82 lbs./1000 sq ft) and 600 lbs per acre 10-10-10 fertilizer (14 lbs./1000 sq ft) before seeding. Harrow or disc into upper three inches of soil. At the time of seeding, apply 600 lbs. per acre 33-0-0 ureamitic fertilizer (9 lbs/1000 sq ft).  
 2) Acceptable Apply 2 tons per acre dolomitic limestone (82 lbs./1000 sq ft) and apply 1000 lbs per acre 10-10-10 fertilizer (23 lbs/1000 sq ft) before seeding. Harrow or disc into upper three inches of soil.  
 SEEDING: For periods March 1 thru April 30, and August 1 thru October 15, seed with 60 lbs per acre (14 lbs/1000 sq ft) Kentucky 31 Tall Fescue. For the period May 1 thru July 31, seed with 60 lbs per acre Kentucky 31 Tall Fescue per acre and 2 lbs. per acre (0.5 lbs/1000 sq ft) of vernalis grass. For the period of October 1 thru February 28, provide seed by applying 2 tons per acre of well composted straw mulch and seed as soon as possible in the spring. Option (2) seed with 60 lbs/acre Kentucky 31 Tall Fescue and mulch with 2 tons/acre well composted straw.  
 MAINTENANCE: Apply 1 1/2 to 2 tons per acre (70 to 90 lbs/1000 sq ft) of ureamitic small grain straw immediately after seeding. Annual mulch immediately after application using mulch anchoring tool or 2 1/4 gallons per acre (5 gal/1000 sq ft) of emulsified asphalt on all areas. On slopes 3 feet or higher, use 340 gallons per acre (8 gal/1000 sq ft) of anchoring agent.  
 MAINTENANCE: Inspect for needed areas and make needed repairs, replacements and reseedings.

**TEMPORARY SEEDING NOTES**  
 SEEDING PREPARATION: Loosen upper three inches of soil by raking, digging or other acceptable means before seeding, if not previously loosened.  
 SOIL AMENDMENTS: Apply 600 lbs. per acre 10-10-10 fertilizer (14 lbs./1000 sq ft).  
 SEEDING: For periods March 1 thru April 30 and from August 1 thru November 15, seed with 2 1/2 tons per acre of annual ryegrass (52 lbs./1000 sq ft). For the period May 1 thru August 14, seed with 3 lbs. per acre of vernalis grass (0.75 lbs/1000 sq ft). For the period November 1 thru February 28, provide seed by applying 2 tons per acre of well composted straw mulch and seed as soon as possible in the spring, or use seed.  
 MAINTENANCE: Apply 1 1/2 to 2 tons per acre (70 to 90 lbs/1000 sq ft) of ureamitic small grain straw immediately after seeding. Annual mulch immediately after application using mulch anchoring tool or 2 1/4 gallons per acre (5 gal/1000 sq ft) of emulsified asphalt on all areas. On slopes 3 feet or higher, use 340 gallons per acre (8 gal/1000 sq ft) of anchoring agent.

**21.0 STANDARDS AND SPECIFICATIONS FOR TOPSOIL**  
 Definition: Placement of topsoil over a prepared subsoil prior to establishment of permanent vegetation.  
 Purpose: To provide a suitable soil medium for plantable growth. Soil of concern here is the moisture content, the nutrient levels, low pH, materials toxic to plants, and/or unacceptable soil structure.  
 Conditions Where Practice Applies: This practice is limited to areas having 2:1 or flatter slopes where:  
 a. The texture of the exposed subsoil/parent material is not adequate to produce vegetative growth.  
 b. The soil material is so shallow that the rooting zone is not deep enough to support plants or furnish continuing supplies of moisture and plant nutrients.  
 c. The original soil to be vegetated contains materials toxic to plant growth.  
 d. The soil is so acidic that treatment with limestone is not feasible.  
 e. For the purpose of these Standards and Specifications, areas having slopes steeper than 2:1 require special consideration and design for appropriate stabilization. Areas having slopes steeper than 2:1 shall have the appropriate stabilization shown on the plans.  
 Construction and Material Specifications:  
 1. Topsoil salvaged from the existing site may be used as provided if it meets the standards set forth in these specifications. Typically, the depth of topsoil to be salvaged for a given soil type can be found in the representative soil profile section in the Soil Survey published by USDA-NRCS in cooperation with Maryland Agricultural Experiment Station.  
 2. Topsoil Specifications - Soil to be used as topsoil must meet the following:  
 a. Topsoil shall be of loam, sandy loam, clay loam, all loam, sandy clay loam, loamy sand. Other soils may be salvaged for a given soil type only if approved and approved by the appropriate approval authority. Regardless, topsoil shall not be a mixture of contrasting textures. Topsoil shall not be a mixture of contrasting textures of colors, stones, slag, coarse fragments, gravel, silt, roots, twigs, or other material larger than 1/4" and 1/2" in diameter.  
 b. Topsoil must be free of plants or plant parts such as Bermuda grass, cockspur, Johnsongrass, johnny, thistle, or others as specified.  
 c. Where the subsoil is either highly acidic or composed of heavy clays, ground limestone shall be applied at the rate of 4-8 tons/acre (200-400 pounds per 1,000 square feet) prior to the placement of topsoil. Lime shall be distributed uniformly over designated areas and worked into the soil in accordance with tillage operations as described in the following procedures.  
 d. For sites having disturbed areas under 5 acres:  
 1. Place topsoil (if required) and apply soil amendments as specified in the 20.0 Vegetative Stabilization - Section 1 - Vegetative Stabilization Methods and Materials.  
 2. For sites having disturbed areas under 5 acres:  
 a. Place topsoil (if required) and apply soil amendments as specified in the 20.0 Vegetative Stabilization - Section 1 - Vegetative Stabilization Methods and Materials.

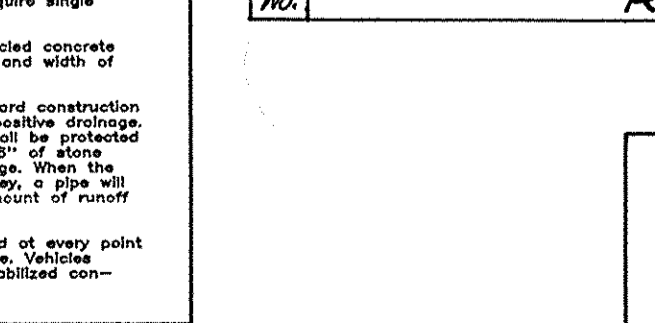
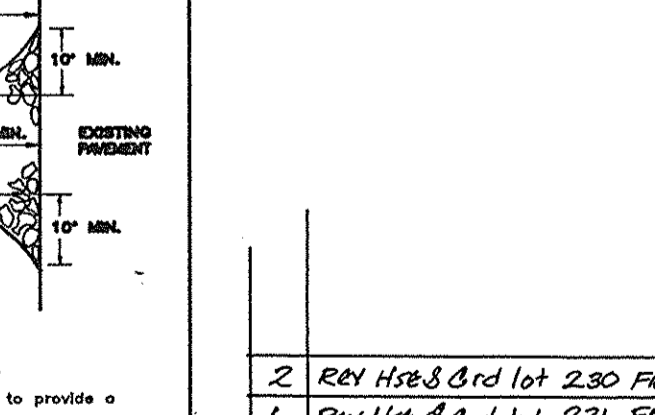
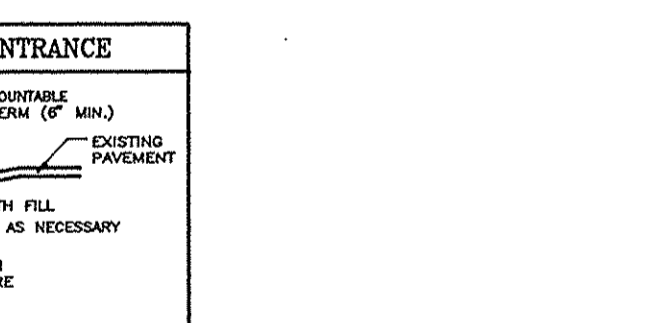
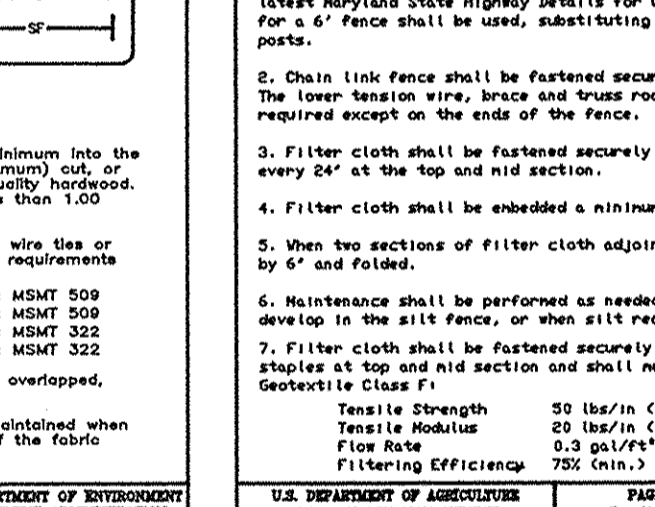
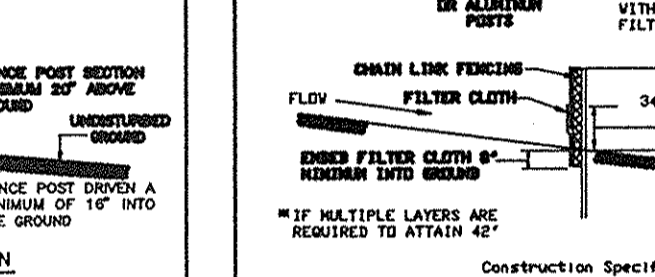
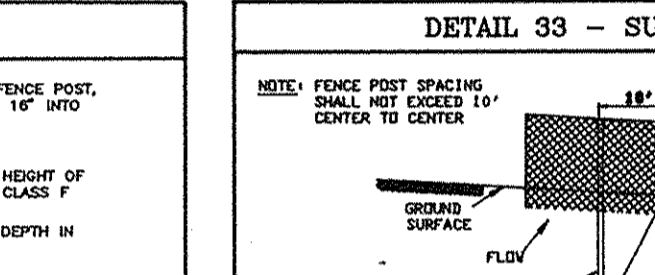


**REVISIONS**

NO.	REVISIONS	DATE
1	REV H&S 3rd lot 230 FROM BOX TO STERLING	4-6-99
2	REV H&S 3rd lot 231 FROM BOX TO NEWBURY II	4-6-99

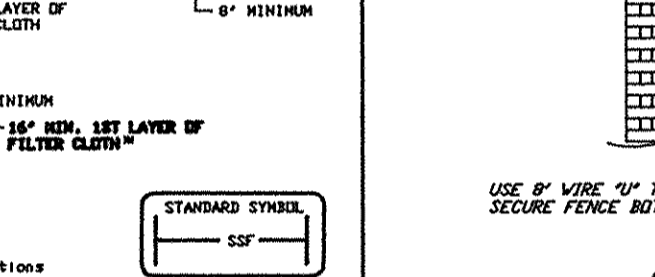
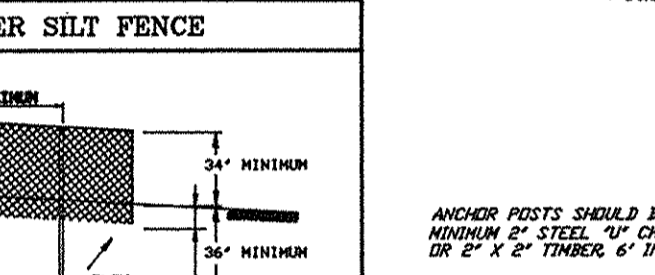
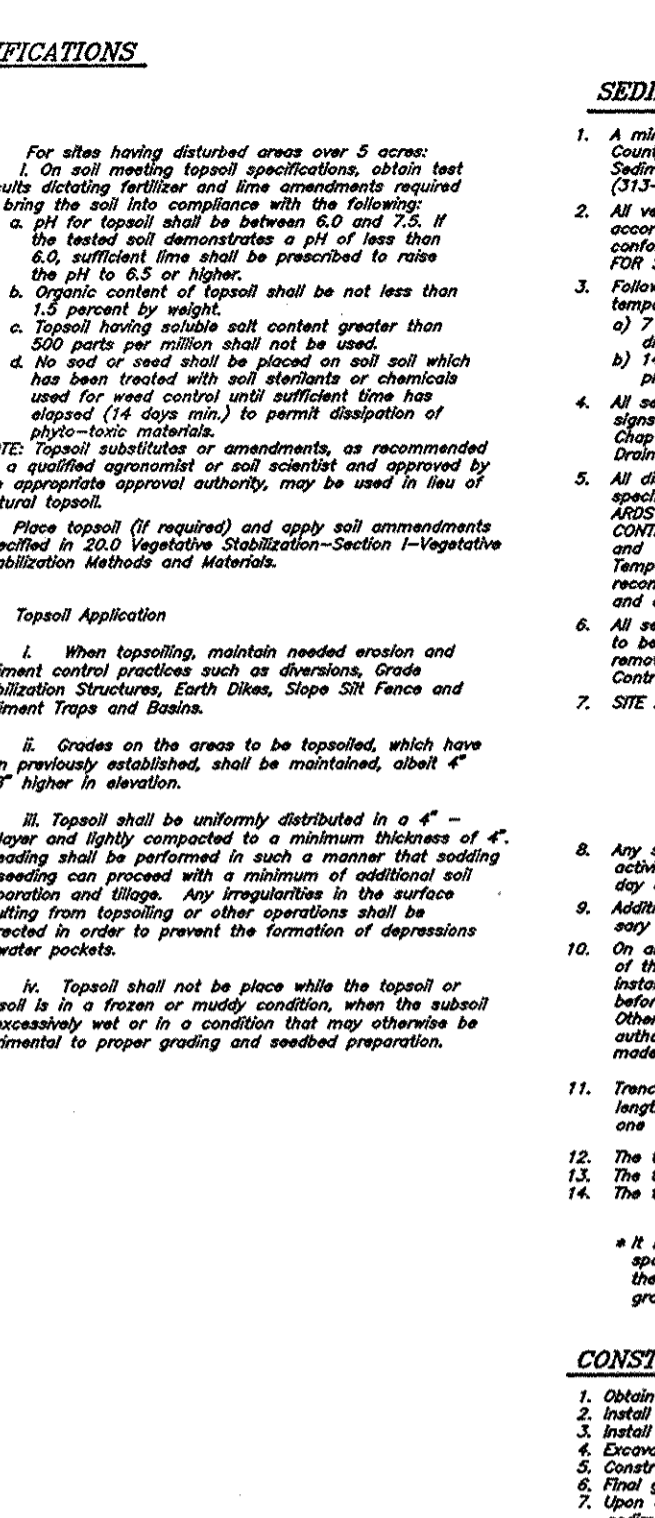
Reviewed For: HOWARD S.C.D. and meets Technical Requirements  
 Signature: [Signature] Date: 10/15/97  
 Signature: [Signature] Date: 10/12/97  
 Signature: [Signature] Date: 10/12/97

**SEDIMENT AND EROSION CONTROL NOTES**  
 1. A minimum of 48 hours notice must be given to the Howard County Department of Inspections, Licensing and Permits, Sediment Control Division prior to the start of any construction (21.0) of the HOWARD COUNTY DESIGN MANUAL, SECTION 1.  
 2. All vegetative and structural practices are to be installed according to the 1994 MARYLAND STANDARDS AND SPECIFICATIONS FOR SOIL EROSION AND SEDIMENT CONTROL and revisions therein.  
 3. Following initial site disturbance or re-disturbance, permanent or temporary stabilization shall be completed within:  
 a. 7 calendar days for all other disturbed or graded areas on the project site.  
 b. 14 days for all other disturbed or graded areas on the project site.  
 4. All sediment control structures must be located and working areas posted around their perimeter in accordance with Vol. 1, Section 1.1 of the HOWARD COUNTY DESIGN MANUAL, SECTION 1.  
 5. All sediment control structures must be installed within the three (3) day period after disturbance or re-disturbance of the site.  
 6. All sediment control structures are to be installed in accordance with the 1994 MARYLAND STANDARDS AND SPECIFICATIONS FOR SOIL EROSION AND SEDIMENT CONTROL for permanent seedings, soil temporary seeding and mulching (20.0) and the 1994 MARYLAND STANDARDS AND SPECIFICATIONS FOR SOIL EROSION AND SEDIMENT CONTROL for permanent seedings, soil temporary seeding and mulching (20.0).  
 7. Temporary stabilization with mulch can only be used when recommended seeding details do not allow for proper germination and establishment of grasses.  
 8. All sediment control structures are to remain in place and are to be maintained in operative condition with permission for their removal has been obtained from the Howard County Sediment Control Inspector.  
 9. SITE ANALYSIS:  
 Total Area of Site: 0.72 Acres  
 Area Disturbed: 1.00 Acres  
 Area to be vegetatively stabilized: 0.28 Acres  
 Total Fill: 200,000 CY  
 Other Fills/Borrow Areas: 200,000 CY  
 10. All disturbed areas must be stabilized within the three (3) day period after disturbance or re-disturbance of the site.  
 11. Any sediment control practice which is disturbed by grading activity for placement of utilities must be repaired on the same day of disturbance.  
 12. Additional sediment control must be provided, if deemed necessary by the Howard County DWS Sediment Control Inspector.  
 13. On all sites with disturbed areas in excess of 2 acres, approval of the inspection agency shall be required. Upon completion of installation of perimeter erosion and sediment controls, but before proceeding with any other earth disturbance or grading, the sediment control inspector of the site and it's grading permit number at the time of construction.  
 14. The total amount of silt fence = 2875 LF  
 The total amount of earth dikes = 457 LF  
 The total amount of earth dikes = 457 LF  
 The total amount of earth dikes = 457 LF  
 \* Daily construction of houses on site: N/A



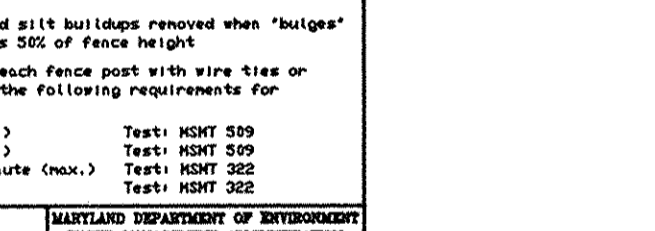
**DEVELOPERS/BUILDERS CERTIFICATE**  
 We certify that all development and construction will be done according to this plan of development and plan for sediment and erosion control and that all responsible personnel involved in the construction project will have a Certificate of Attendance at a Department of the Environment Approved Training Program for the Control of Sediment and Erosion before beginning the project. I also authorize periodic on-site inspection by the Howard County Sediment Control Division or their authorized agents, as are deemed necessary.  
 Signature: [Signature] Date: 8-19-97  
 Signature: [Signature] Date: 8-20-97

**ENGINEER'S CERTIFICATE**  
 I hereby certify that this plan for Sediment and Erosion Control represents a practical and workable plan based on my personal knowledge of the site conditions and that it was prepared in accordance with the requirements of the Howard Soil Conservation District.  
 Signature: [Signature] Date: 8-20-97  
 Signature: [Signature] Date: 8-20-97



**GENERAL NOTES:**

- Subject property is zoned N.T.S.P.L.D. per 10-13-93 Comprehensive Zoning Plan.
- The total area included in this submission is 0.72 Acres.
- The total number of lots included in this submission is 2.
- Improvement to property: Single Family Detached.
- The maximum lot coverage permitted is: 30X.
- Department of Planning and Zoning reference file numbers are: S-7-03, P-75-17, P-76-93, P-76-93, S-76-12, F-97-125.
- Utilities shown as existing are taken from approved Water and Sewer plans Contract # 34-356-H, approved Road Construction plans P-76-93.
- Any damage to county owned rights-of-way shall be corrected at the developer's expense.
- All roadways are public and existing.
- The existing topography was taken from Road Construction Plans P-76-93 prepared by Riemer, Muegge & Associates, Inc. on August 7, 1996.
- The coordinates shown hereon are based upon the Howard County Geocentric Control which is based upon the Maryland State Plane Coordinate System - Howard County Monument Nos. 2337001 and 2437003.
- The contractor shall notify the Department of Public Works/Division of Construction Inspection at (410) 313-1850 at least twenty-four (24) hours prior to the start of work.
- The contractor shall notify 'Miss Utility' at 1-800-257-TTTT at least 48 hours prior to any excavation work.
- For driveway entrance details, refer to Ho. Co. Design Manual Volume IV details R-6-03.
- Stormwater Management is provided per: P-97-125, Stormwater Management Quantity Control is provided by the Maryland Route 32 Stream Crossings. Water Quality is provided by publicly owned Bioretention Areas.
- In accordance with PDP-Phase 209 Part VI, bay windows or chimneys not more than 10 feet in width may project not more than 4 feet into any setbacks; porches and decks may project not more than 3 feet into the front or rear setbacks.
- SHC elevations shown are located at the property line.



**OWNER / DEVELOPER**  
 THE HOWARD RESEARCH AND DEVELOPMENT CORP.  
 10275 LITTLE PATENT PARKWAY  
 COLUMBIA, MARYLAND 21044

**SPECIAL NOTES:**  
 This plan is for house siting and lot grading only. Improvements shown within the rights-of-way on this S.D.P. are not to be used for construction. For construction see approved Road Construction Plans P-76-93 and/or approved Water and Sewer Plans Contract #34-356-H.

SUBMISSION NAME	SECTION/AREA	LOTS/PARCELS
COLUMBIA VILLAGE OF RIVER HILL	TWO/50X	230 & 231
PLAT NO.	BLOCK NO.	ZONE
12835	B	NTSPLD
TAX MAP NO.	ELECTION DIST.	CENSUS TRACT
6053	5TH	6053
WATER CODE	SEWER CODE	
H-12	6652500	

