

SHEET INDEX	
No.	DESCRIPTION
1	TITLE SHEET
2	SITE DEVELOPMENT PLAN
3	GRADING AND SEDIMENT CONTROL PLAN
4	LANDSCAPE PLAN
5	SEDIMENT CONTROL DETAILS
6	NOTES AND DETAILS

# SITE DEVELOPMENT PLAN

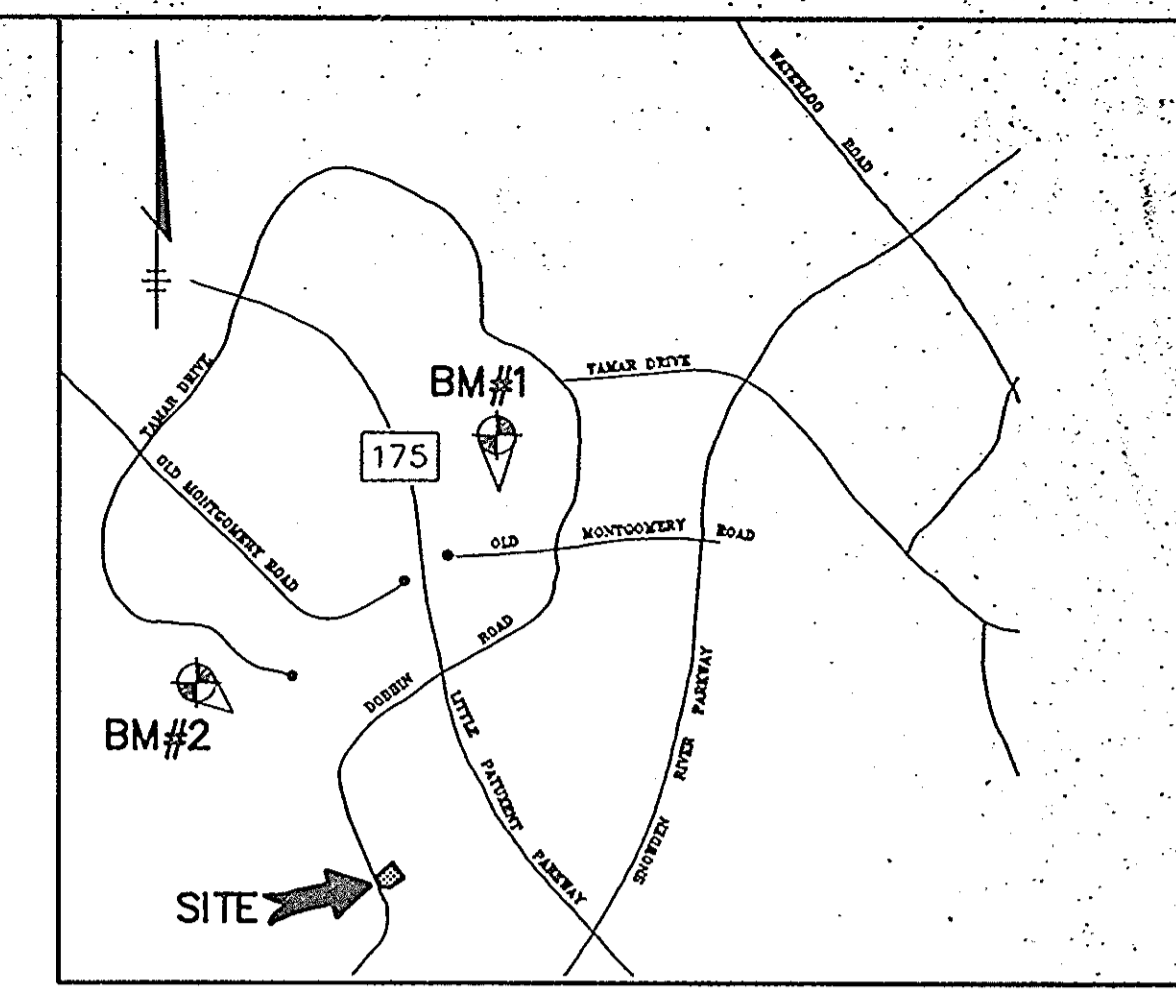
# BLOCKBUSTER VIDEO

## DOBBIN ROAD COMMERCIAL CENTER

### SECTION 1, AREA 1, PARCEL 396-B

### 6th ELECTION DISTRICT

### HOWARD COUNTY, MARYLAND

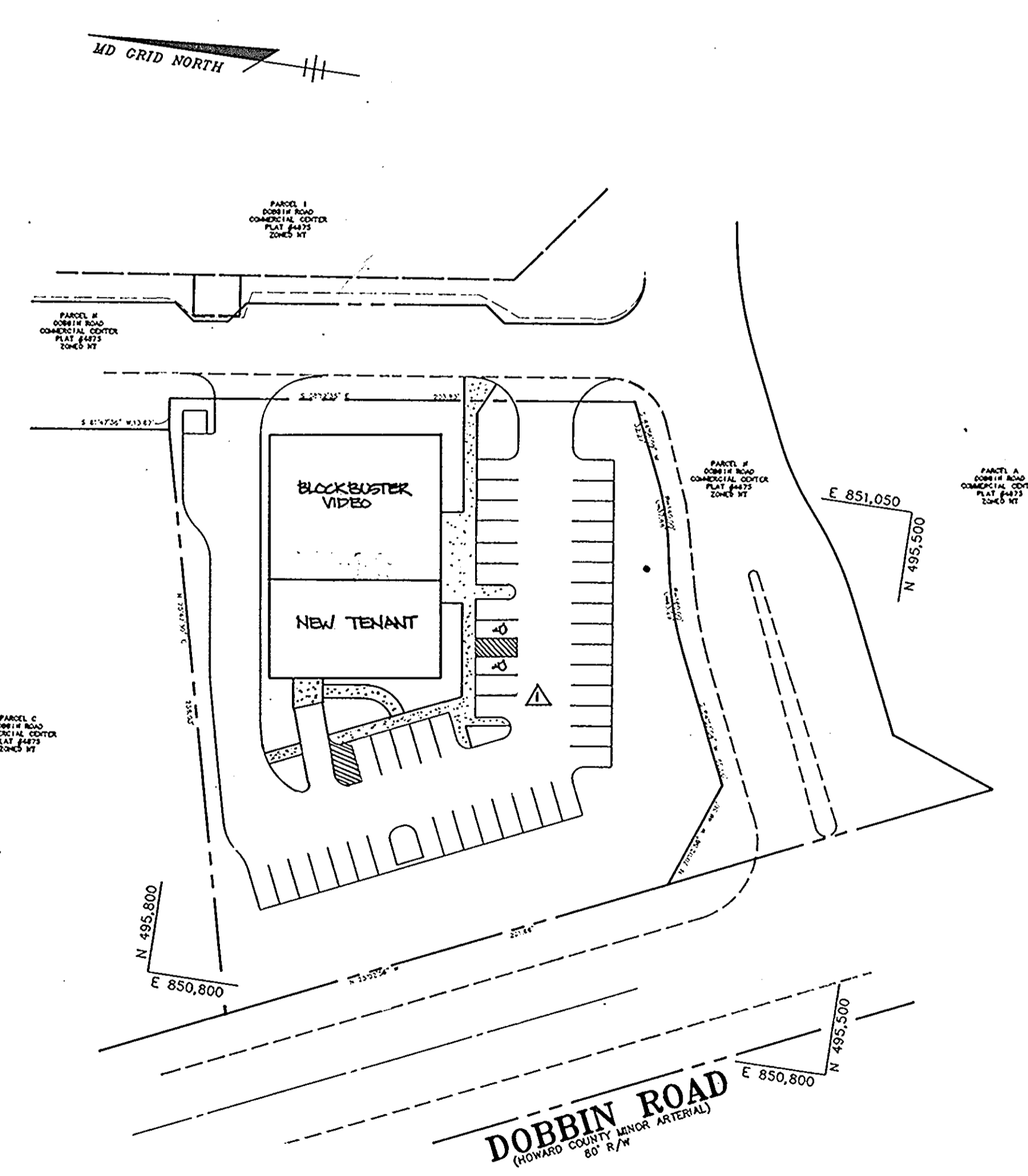


VICINITY MAP  
SCALE: 1"=2000'

#### GENERAL NOTES

- ALL CONSTRUCTION SHALL BE IN ACCORDANCE WITH THE LATEST STANDARDS AND SPECIFICATIONS OF HOWARD COUNTY PLUS M.S.A. STANDARDS AND SPECIFICATIONS IF APPLICABLE.
- APPROXIMATE LOCATION OF EXISTING UTILITIES ARE SHOWN FROM BEST AVAILABLE INFORMATION. THE CONTRACTOR SHALL TAKE ALL NECESSARY PRECAUTIONS TO PROTECT THE EXISTING UTILITIES AND MAINTAIN UNINTERRUPTED SERVICE. ANY DAMAGE INCURRED DUE TO CONTRACTOR'S OPERATION SHALL BE REPAIRED IMMEDIATELY AT THE CONTRACTOR'S EXPENSE.
- THE CONTRACTOR SHALL TEST PIT EXISTING UTILITIES AT LEAST (3) DAYS BEFORE STARTING WORK SHOWN ON THESE DRAWINGS TO VERIFY THEIR LOCATION AND ELEVATION. THE CONTRACTOR SHALL NOTIFY THE ENGINEER IMMEDIATELY IF LOCATION OF UTILITIES IS OTHER THAN SHOWN.
- THE CONTRACTOR SHALL NOTIFY THE DEPARTMENT OF PUBLIC WORKS/CONSTRUCTION INSPECTION DIVISION AT (410) 313-1860 AT LEAST FIVE (5) WORKING DAYS PRIOR TO THE START OF WORK.
- CONTRACTOR TO NOTIFY THE FOLLOWING UTILITIES OR AGENCIES AT LEAST FIVE DAYS BEFORE STARTING WORK SHOWN ON THESE DRAWINGS.
 

MISS UTILITY	1-800-257-7777
GAP TELEPHONE COMPANY	725-9976
HOWARD COUNTY BUREAU OF UTILITIES	313-4909
AT&T CABLE LOCATION DIVISION	393-2553
BALTIMORE GAS & ELECTRIC COMPANY	653-0123
STATE HIGHWAY ADMINISTRATION	531-5533
- TRAFFIC CONTROL DEVICES, MARKINGS AND SIGNING SHALL BE IN ACCORDANCE WITH THE LATEST EDITION OF THE MANUAL ON UNIFORM TRAFFIC CONTROL DEVICES (MUTCD). ALL STREET AND REGULATORY SIGNS SHALL BE IN PLACE PRIOR TO THE PLACEMENT OF ANY ASPHALT.
- WATER PUBLIC - CONTRACT NO. 24-0951-D-C000140  
SEWER PUBLIC - CONTRACT NO. 24-0951-D-C000140
- TOPO AND EXISTING UTILITIES SHOWN TAKEN FROM FIELD RUN SURVEY DATED SEPT. 1990, BY RIEMER MUEGGE AND ASSOCIATES, INC. AND AS-BUILT DRAWINGS.
- VERTICAL CONTROL ESTABLISHED USING NO. 00 MONUMENT HORIZONTAL CONTROL ESTABLISHED FROM MARYLAND STATE COORDINATE SYSTEM.
- PREVIOUS COUNTY FILE NO: F-81-36, FDP-132-A-1, SDP-01-40
- ALL PLAN DIMENSIONS ARE TO FACE UNLESS OTHERWISE NOTED.
- THE DEVELOPER IS RESPONSIBLE FOR THE ACQUISITION OF ALL EASEMENTS, RIGHTS AND/OR RIGHTS-OF-WAY THAT MAY BE REQUIRED FOR THE SEDIMENT AND EROSION CONTROL PRACTICES, STORMWATER MANAGEMENT PRACTICES AND THE DISBURSE OF STORMWATER ONTO OR ADJACENT OR DOWNSTREAM PROPERTIES INVOLVED IN THIS PLAN. HE IS ALSO RESPONSIBLE FOR THE ACQUISITION OF ALL EASEMENTS, RIGHTS AND/OR WORK ON ADJACENT PROPERTIES INVOLVED IN THIS PLAN.
- THE PAVEMENT DETAILS SHOWN ON THESE PLANS REFLECT THE HOWARD COUNTY MINIMUM STANDARD PAVEMENT SECTIONS AND ARE NOT BASED ON SITE SPECIFIC CONDITIONS. PRIOR TO PAVING, THE FINAL PAVEMENT SECTIONS SHALL BE DETERMINED BY A QUALIFIED GEOTECHNICAL ENGINEER, BASED ON IN-SITU TESTING OF THE FINISHED SUBGRADE. ANY PAVEMENT SECTION DETERMINED BY THE GEOTECHNICAL ENGINEER THAT IS LESS THAN THE HOWARD COUNTY MINIMUM STANDARD, SHALL FIRST BE APPROVED BY THE HOWARD COUNTY DEPARTMENT OF PUBLIC WORKS. THE TESTING AND GEOTECHNICAL ENGINEER SHALL BE PROVIDED BY THE OWNER.
- ALL ELEVATIONS SHOWN ARE BASED ON U.S.C. AND O.S. MEAN SEA LEVEL DATUM, 1929.
- ANY DAMAGE TO THE COUNTY'S RIGHT-OF-WAY SHALL BE CORRECTED AT THE DEVELOPER'S EXPENSE.
- STORMWATER MANAGEMENT FOR THIS SITE IS PROVIDED UNDER SDP-01-40. EXISTING FACILITY IS A PUBLIC OUTSTREET DIRECTIONAL MANHOLE.
- THERE ARE NO WETLANDS OR FLOODPLAIN ON SITE.



#### SITE ANALYSIS

AREA OF PROPERTY: 1.178 Ac. OR 51314 S.F.  
 PRESENT ZONING: NI (EMPLOYMENT CENTER) PER FDP-132-A-III  
 PROPOSED USE: VIDEO RENTAL AND SALES  
 BUILDING AREA: 0.18 AC. (8075 S.F.)  
 BUILDING COVERAGE (% OF SITE): 16.0%  
 OPEN SPACE REQUIRED (% OF SITE): 0  
 OPEN SPACE PROVIDED (% OF SITE): 44.0% OR 0.52 AC. (22691 S.F.)  
 PARKING:  
 PARKING REQUIRED: 5 SP./1000 S.F. PER FDP-132-A-III  
 41 SP.  
 PARKING PROVIDED: 46 SP. (INCLUDING 2 HC SPACES)  $\Delta$   
 PARKING AREA: 0.47 AC. (20521 S.F.)  
 PARKING COVERAGE (% OF SITE): 40.0%

APPROVED: FOR PUBLIC WATER AND PUBLIC SEWERAGE SYSTEMS, HOWARD COUNTY HEALTH DEPARTMENT.

N/A COUNTY HEALTH OFFICER DATE

APPROVED: HOWARD COUNTY DEPARTMENT OF PLANNING AND ZONING.

*Frank J. Drayton* 7/29/94  
 DIRECTOR (Acting) DATE  
*Richard Blosser* 7/29/94  
 CHIEF, DIVISION OF LAND DEVELOPMENT AND RESEARCH DATE

APPROVED: FOR PUBLIC WATER, PUBLIC SEWERAGE, STORM DRAINAGE SYSTEMS AND PUBLIC ROADS.

*Oliver M. Terjan* 7/28/94  
 DIRECTOR, ASST. DATE  
*Elizabeth Anderson Galia* 7/28/94  
 CHIEF, BUREAU OF ENGINEERING & SURVEYING DATE

4/2/03 REVISION: PARKING, BLDG USE, SEWERLINE, LOADING DATE NO. REVISION

OWNER: THE HOWARD RESEARCH AND DEVELOPMENT CORPORATION  
 THE ROUSE BUILDINGS  
 10275 LITTLE PATENT PIKE  
 COLUMBIA, MARYLAND 21044  
 410-592-6000  
 DEVELOPER: MANEKIN CORPORATION  
 785 COLUMBIA GARDWAY DR.  
 COLUMBIA, MARYLAND 21046  
 410-750-4100

PROJECT: BLOCKBUSTER VIDEO

AREA: DOBBIN ROAD COMMERCIAL CENTER, 1/1 PARCEL "B"  
 TAX MAP 36 PARCEL 396-B  
 6th ELECTION DISTRICT  
 HOWARD COUNTY, MARYLAND

TITLE: TITLE SHEET

RIEMER MUEGGE & ASSOCIATES, INC.  
 Planners • Engineers • Surveyors  
 8818 Centre Park Drive • Suite 200 • Columbia, Md. 21045  
 410-997-8900 FAX: 410-997-9282

7-12-94 DATE  
 DESIGNED BY: J.C.O.  
 DRAWN BY: J.C.O.  
 PROJECT NO: 98200  
 DATE: JULY 12, 1994  
 SCALE: AS SHOWN  
 DRAWING NO. 1 OF 6  
 JAYKANT D. PAREKH #19148

APPROVED  
 PLANNING BOARD  
 OF HOWARD COUNTY  
 DATE: 5-26-94

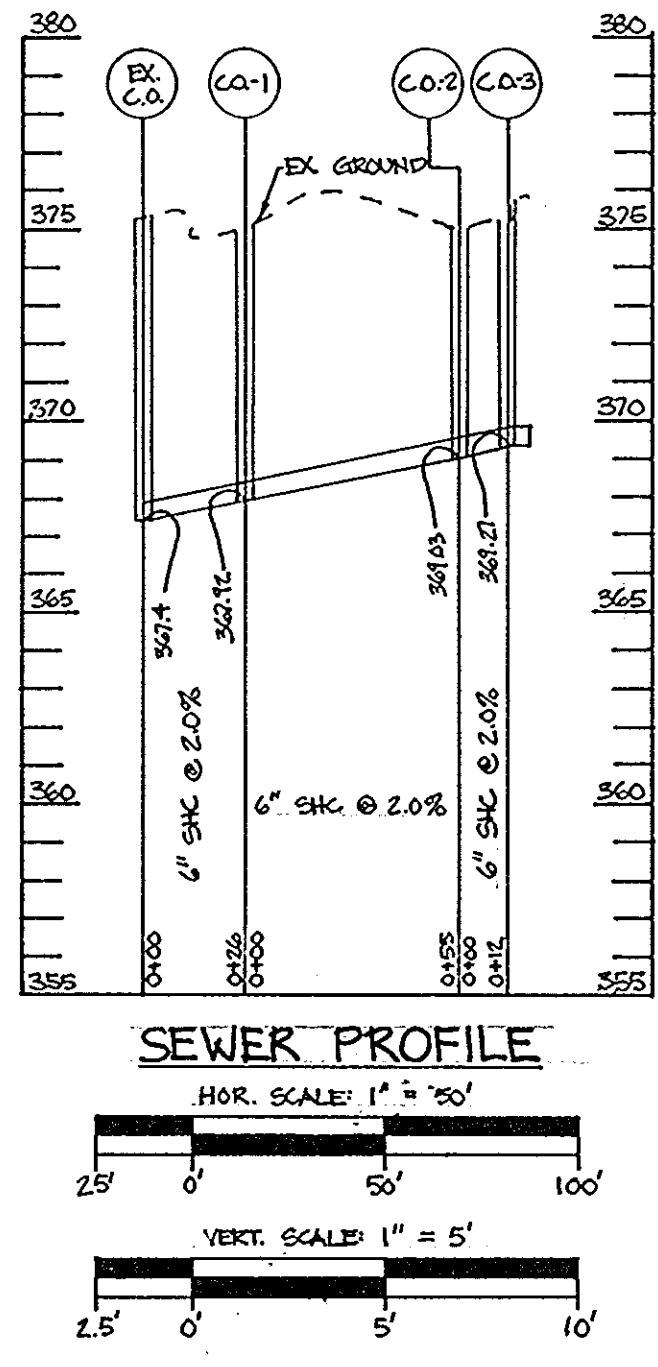
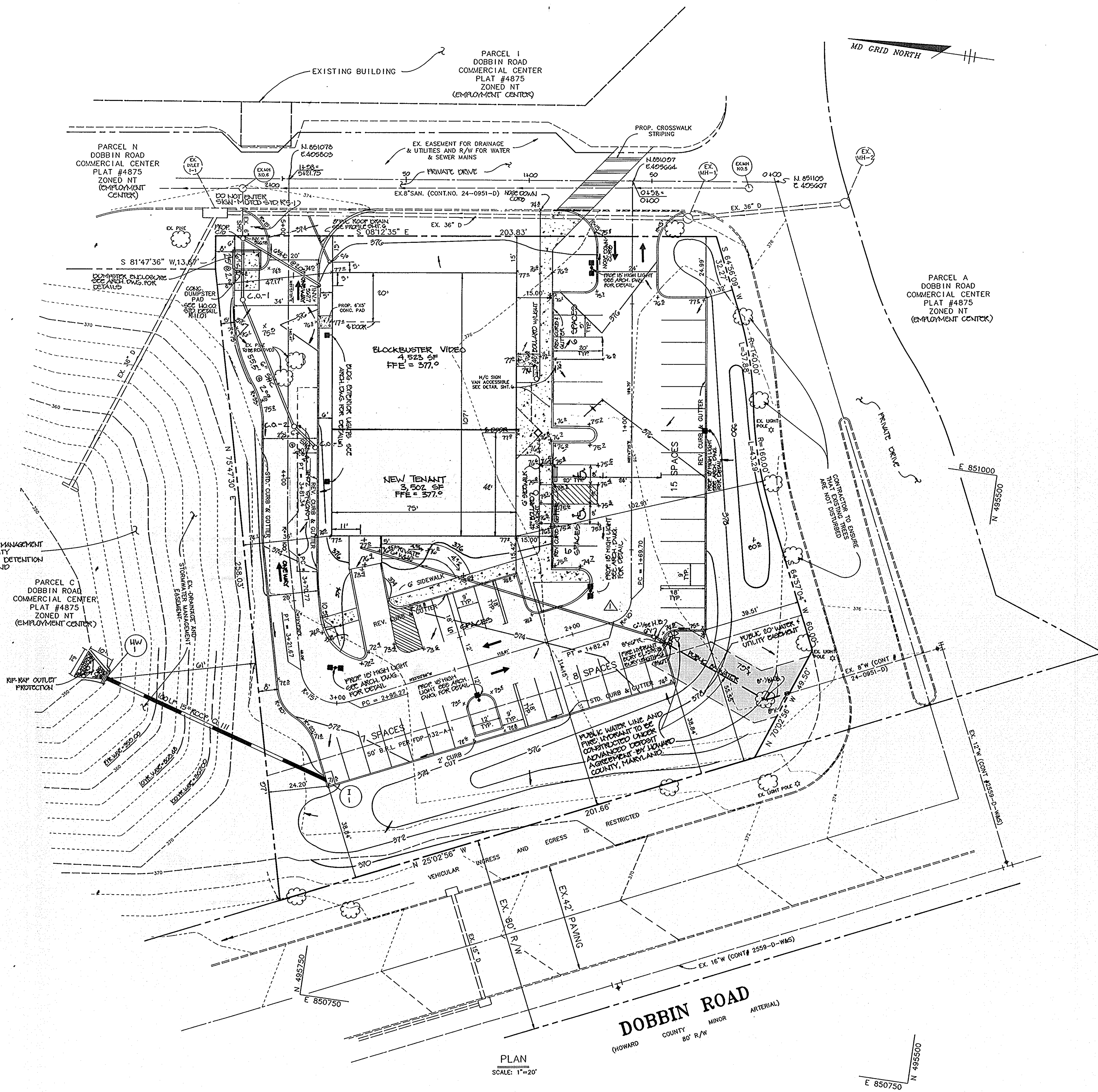
#### ADDRESS CHART

PARCEL NUMBER	STREET ADDRESS
8	6505 DOBBIN ROAD

SECTION NAME - DOBBIN ROAD COMMERCIAL CENTER	SECT./AREA - 1/1	PARCEL - PARCEL 396-B
PLAT # - 4875	BLOCK # - 12	LOT - 36
ENCLOSURE - NT	TAX MAP NO. - 36	BLK. DIST. - 6th
WATER CODE - E-06	SEWER CODE - 00000000	CENSUS TRACT - 8067-03

PLAN  
 SCALE: 1"=50'

ELEVATION  
 NOT TO SCALE



**LEGEND**

- P-2 PAVING
- CONCRETE
- DRAINAGE FLOW

NOTE: ALL RADII ARE 5' UNLESS OTHERWISE NOTED

\* INDICATES TRANSITION FROM STANDARD TO REVERSE CURB & GUTTER

APPROVED: FOR PUBLIC WATER AND PUBLIC SEWERAGE SYSTEMS, HOWARD COUNTY HEALTH DEPARTMENT.

*N/A*  
COUNTY HEALTH OFFICER DATE

APPROVED: HOWARD COUNTY DEPARTMENT OF PLANNING AND ZONING.

*Dante J. DeAngelis* 7/23/94  
DIRECTOR DATE

*J. Richard Blood* 7/23/94  
CHIEF, DIVISION OF LAND DEVELOPMENT AND RESEARCH DATE

APPROVED: FOR PUBLIC WATER, PUBLIC SEWERAGE, STORM DRAINAGE SYSTEMS AND PUBLIC ROADS.

*Oliver M. Torgerson* 7/23/94  
DIRECTOR DATE

*Elizabeth Anderson-Celia* 7/23/94  
CHIEF, BUREAU OF ENGINEERING DATE

4/2/08	1	REMOVED PARKING, BLDG USE, SEWER LINE, LOADING
DATE	NO.	REVISION

OWNER: THE HOWARD RESEARCH AND DEVELOPMENT CORPORATION  
7165 COLUMBIA GATEWAY DRIVE  
COLUMBIA, MARYLAND 21044  
410-592-6000

DEVELOPER: MANDKIN CORPORATION  
7165 COLUMBIA GATEWAY DRIVE  
COLUMBIA, MARYLAND 21046  
410-250-1400

PROJECT: **BLOCKBUSTER VIDEO**

AREA: DOBBIN ROAD COMMERCIAL CENTER 1/1 PARCEL "B"  
TAX MAP 36 PARCEL 206-B  
6th ELECTION DISTRICT  
HOWARD COUNTY, MARYLAND

TITLE: **SITE DEVELOPMENT PLAN**

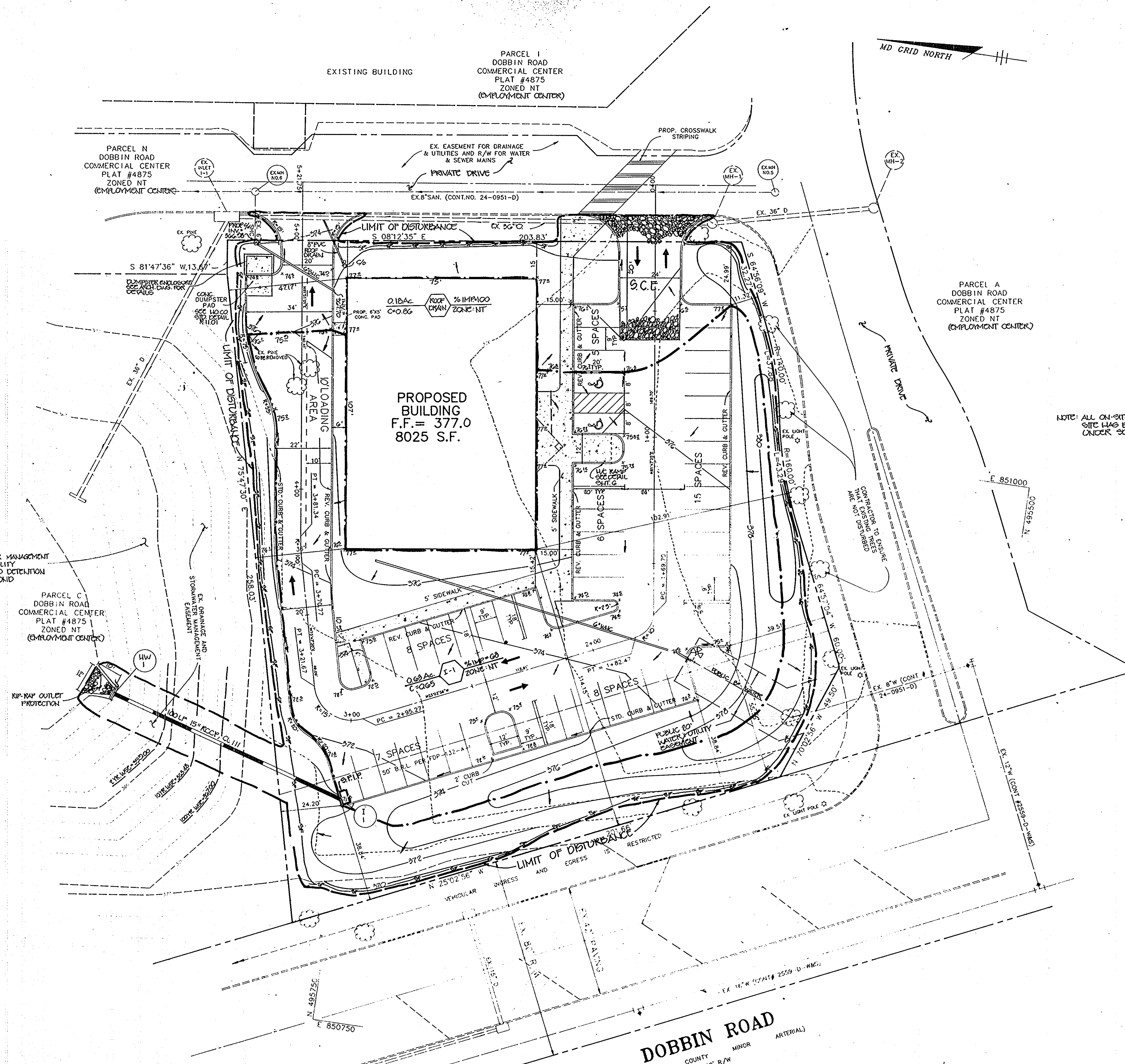
**RIEMER MUEGGE & ASSOCIATES, INC.**  
Planners Engineers Surveyors  
8818 Centre Park Drive • Suite 200 • Columbia, Md. 21045  
410-997-8900 FAX: 410-997-9282

APPROVED  
PLANNING BOARD  
OF HOWARD COUNTY  
DATE: **5-26-94**

7-12-94 DATE	F-81-38 FDP-132-A-1
DESIGNED BY: J.C.O./DKP	
DRAWN BY: J.C.O.	
PROJECT NO: 98200	
DATE: JULY 12, 1994	
SCALE: AS SHOWN	
DRAWING NO. 2 OF 6	

*J. Farrell*  
JAYKANT D. PAREKH # 19148

PLAN  
SCALE: 1"=20'



PROPOSED BUILDING  
F.F. = 377.0  
8025 S.F.

NOTE: ALL ON-SITE SOILS ARE 'C' SOILS. THIS SITE HAS BEEN PREVIOUSLY GRADED UNDER SOP-91-40.

- LEGEND**
- P-2 PAVING
  - CONCRETE
  - DRAINAGE FLOW
  - STONE HURD INLET PROTECTION
  - GILT FENCE
  - LIMIT OF DISTURBANCE
  - S.C.E.
  - STABILIZED CONSTRUCTION ENTRANCE
  - DRAINAGE DIVIDE
- NOTE: ALL RADII ARE 5' UNLESS OTHERWISE NOTED
- \* INDICATES TRANSITION FROM STANDARD TO REVERSE CURB & GUTTER

PLAN  
SCALE: 1"=20'

**DOBBIN ROAD**  
(HOWARD COUNTY MINOR ARTERIAL)  
80' R/W

**APPROVED**  
PLANNING BOARD  
OF HOWARD COUNTY  
DATE **5-26-94**

BY THE DEVELOPER :

I/WE CERTIFY THAT ALL DEVELOPMENT AND CONSTRUCTION WILL BE DONE ACCORDING TO THIS PLAN, AND THAT ANY RESPONSIBLE PERSONNEL INVOLVED IN THE CONSTRUCTION PROJECT WILL HAVE A CERTIFICATE OF ATTENDANCE AT A DEPARTMENT OF THE ENVIRONMENT APPROVED TRAINING PROGRAM FOR THE CONTROL OF SEDIMENT AND EROSION BEFORE BEGINNING THE PROJECT. I ALSO AUTHORIZE PERIODIC ON-SITE INSPECTIONS BY THE HOWARD SOIL CONSERVATION DISTRICT.

*R. Coffey* DEVELOPER **6/16/94** DATE

BY THE ENGINEER :

I CERTIFY THAT THIS PLAN FOR EROSION AND SEDIMENT CONTROL REPRESENTS A PRACTICAL AND WORKABLE PLAN BASED ON MY PERSONAL KNOWLEDGE OF THE SITE CONDITIONS AND THAT IT WAS PREPARED IN ACCORDANCE WITH THE REQUIREMENTS OF THE HOWARD SOIL CONSERVATION DISTRICT.

*J. Farrell* ENGINEER **6-15-94** DATE  
JAYKANT D. PAREKH

THESE PLANS HAVE BEEN REVIEWED FOR THE HOWARD SOIL CONSERVATION DISTRICT AND MEET THE TECHNICAL REQUIREMENTS FOR SOIL EROSION AND SEDIMENT CONTROL.

*Patricia Engle* U.S. SOIL CONSERVATION SERVICE **7/14/94** DATE

THIS DEVELOPMENT PLAN IS APPROVED FOR SOIL EROSION AND SEDIMENT CONTROL BY THE HOWARD SOIL CONSERVATION DISTRICT.

*John P. Robertson* HOWARD SOIL CONSERVATION DISTRICT **7/14/94** DATE

APPROVED : FOR PUBLIC WATER AND PUBLIC SEWERAGE SYSTEMS, HOWARD COUNTY HEALTH DEPARTMENT.

*N/A* COUNTY HEALTH OFFICER DATE

APPROVED : HOWARD COUNTY DEPARTMENT OF PLANNING AND ZONING.

*Wanda J. DeLong* DIRECTOR **7/25/94** DATE

*Richard Blood* CHIEF, DIVISION OF LAND DEVELOPMENT AND RESEARCH **7/25/94** DATE

APPROVED : FOR PUBLIC WATER, PUBLIC SEWERAGE, STORM DRAINAGE SYSTEMS AND PUBLIC ROADS.

*Olaf M. Jensen* DIRECTOR, *Heena* **7/28/94** DATE

*Elizabeth Anderson-Cole* CHIEF, BUREAU OF ENGINEERING **7/28/94** DATE

DATE	NO.	REVISION

OWNER: THE HOWARD RESEARCH AND DEVELOPMENT CORPORATION THE ROUSE BUILDING 10275 LITTLE PATRICK BLVD. COLUMBIA, MARYLAND 21044 410-582-1000

DEVELOPER: MANKINI CORPORATION 7165 COLUMBIA GATEWAY DRIVE COLUMBIA, MARYLAND 21046 410-290-1100

PROJECT **BLOCKBUSTER VIDEO**

AREA DOBBIN ROAD COMMERCIAL CENTER W/ PARCEL "B" TAX MAP 36 PARCEL 300-B 6th ELECTION DISTRICT HOWARD COUNTY, MARYLAND

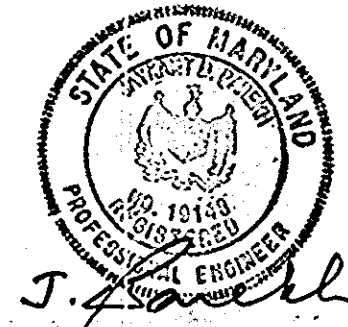
TITLE **SEDIMENT CONTROL PLAN & DRAINAGE AREA MAP**

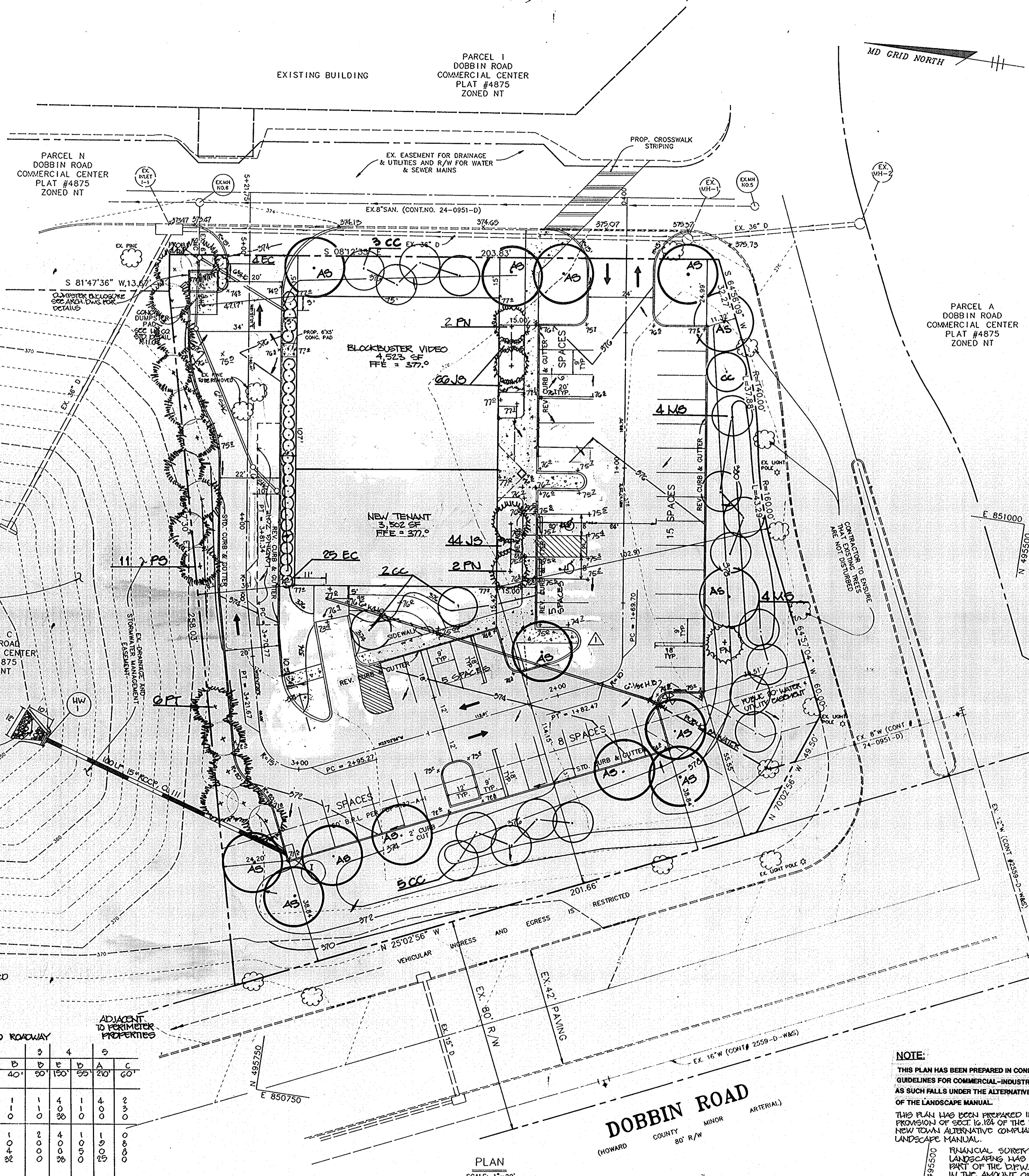
**RIEMER MUEGGE & ASSOCIATES, INC.**  
Planners • Engineers • Surveyors  
8818 Centre Park Drive • Suite 200 • Columbia, Md. 21045  
410-997-8900 FAX: 410-997-9282

**7-12-94** DATE  
**5-26-94** DATE

DESIGNED BY: J.C.O./D.R.F.  
DRAWN BY: J.C.O.  
PROJECT NO: 98200  
DATE: JULY 12, 1994  
SCALE: AS SHOWN  
DRAWING NO. 3 OF 6

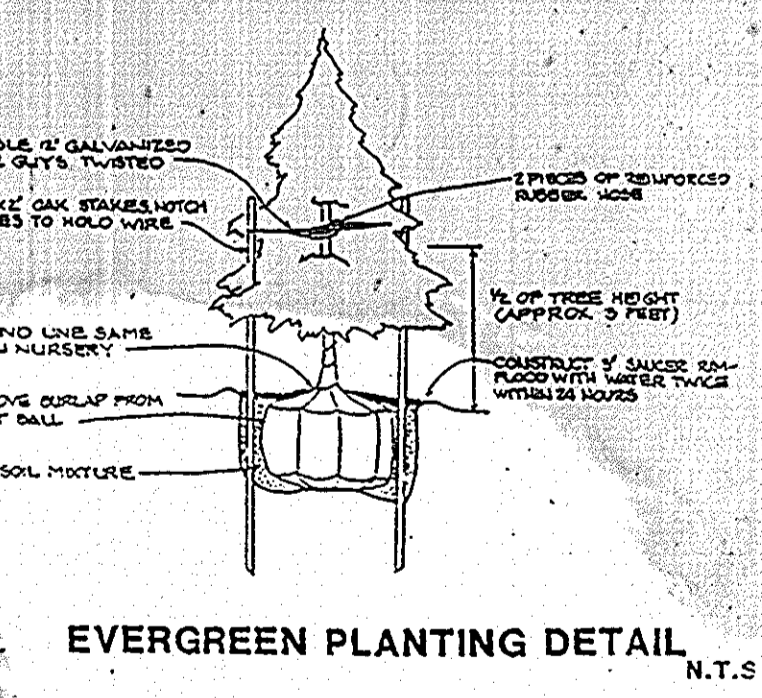
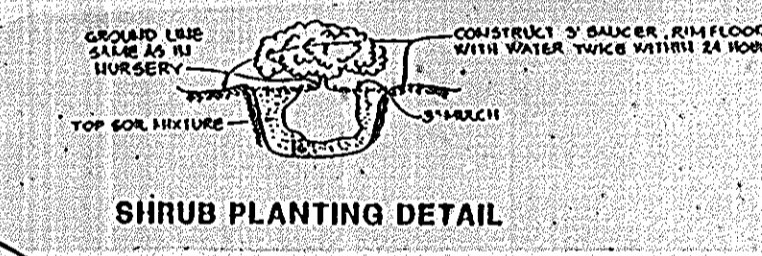
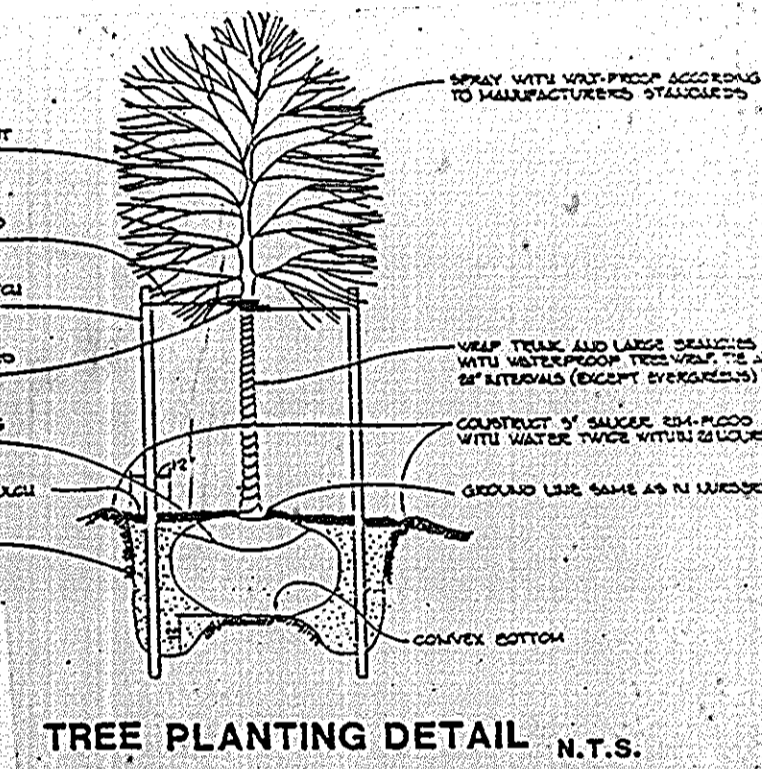
JAYKANT D. PAREKH # 19148





**PLANT LIST**

KEY	QTY	NAME	SIZE	REMARKS
AS	14	ACER SACCHARUM 'LEGACY' SUGAR MAPLE	2 1/2"-3" CAL. 12'-14' HT.	B & B
CC	12	CRATAEGUS CRUSGALLI 'INERMIS' THORNLESS HAWTHORN	2 1/2"-3" CAL. 10'-12' HT.	B & B
EC	20	KUONYHOUS ALTIUS 'COMPACTA' COMPACT WINGED BUONIMOUS	30"-36" HT.	3' O.C.
JS	110	JUNIPERUS CHINENSIS VAR. SARGENTII SARGENT JUNIPER	24"-30" SPRD.	3' O.C.
MS	8	MALUS SARGENTII SARGENT CRABAPPLE	2"-2 1/2" CAL. 6'-8' HT.	B & B
PN	5	PRUNUS CERASIFERA 'NEWPORT' NEWPORT FLOWERING PLUM	2 1/2"-3" CAL. 10'-12' HT.	B & B
PS	11	PINUS STROBUS WHITE PINE	2"-2 1/2" CAL. 6'-8' HT.	B & B Natural
PT	9	PINUS THUNBERGII JAPANESE BLACK PINE	2"-2 1/2" CAL. 6'-8' HT.	B & B Full/dense



APPROVED: FOR PUBLIC WATER AND PUBLIC SEWERAGE SYSTEMS, HOWARD COUNTY HEALTH DEPARTMENT.

DATE: \_\_\_\_\_

APPROVED: FOR HOWARD COUNTY DEPARTMENT OF PLANNING AND ZONING.

*Mark S. Doughty* 7/29/94  
DIRECTOR DATE

*Richard Blood* 7/28/94  
CHIEF, DIVISION OF LAND DEVELOPMENT AND RESEARCH DATE

APPROVED: FOR PUBLIC WATER, PUBLIC SEWERAGE, STORM DRAINAGE SYSTEMS AND PUBLIC ROADS.

*Oliver M. Payne* 7/29/94  
DIRECTOR, Acting DATE

*Elizabeth Anderson Calca* 7/28/94  
CHIEF, BUREAU OF ENGINEERING DATE

4/2/98	REVISED PARKING, BUILDING, SEWER LINE, LOADING
DATE NO.	REVISION

OWNER:	DEVELOPER:
THE HOWARD RESEARCH AND DEVELOPMENT CORPORATION THE ROOSE BUILDING 10275 LITTLE PATRIMENT PKWY. COLUMBIA, MARYLAND 21044 410-592-6000	MANIKIN CORPORATION 7165 COLUMBIA GATEWAY DRIVE COLUMBIA, MARYLAND 21046 410-250-1400

PROJECT: **BLOCKBUSTER VIDEO**

AREA: DOBBIN ROAD COMMERCIAL CENTER VI PARCEL "B"  
TAX MAP 36 PARCEL 306-B  
8TH ELECTION DISTRICT  
HOWARD COUNTY, MARYLAND

**LANDSCAPE PLAN**

**RIEMER MUEGGE & ASSOCIATES, INC.**  
Planners • Engineers • Surveyors  
8818 Centre Park Drive • Suite 200 • Columbia, Md. 21045  
410-997-8900 FAX: 410-997-9282

7-12-94 DATE  
F-81-36 FDP-132-A-1  
DESIGNED BY: J.C.O./DRP  
DRAWN BY: Z.K.  
PROJECT NO.: 98200  
DATE: JULY 12, 1994  
SCALE: AS SHOWN  
DRAWING NO. 4 OF 6

**NOTE:**  
THIS PLAN HAS BEEN PREPARED IN CONFORMANCE WITH 'NEWTOWN GUIDELINES FOR COMMERCIAL-INDUSTRIAL DEVELOPMENT' AND AS SUCH FALLS UNDER THE ALTERNATIVE COMPLIANCE PROVISION OF THE LANDSCAPE MANUAL.  
THIS PLAN HAS BEEN PREPARED IN ACCORDANCE WITH THE PROVISIONS OF SECTION 16.124 OF THE HOWARD COUNTY CODE AND THE NEW TOWN ALTERNATIVE COMPLIANCE PROVISIONS OF THE LANDSCAPE MANUAL.  
FINANCIAL SURETY FOR THE REQUIRED LANDSCAPING HAS BEEN FORWARDED AS PART OF THE DEW DEVELOPER'S AGREEMENT IN THE AMOUNT OF \$ 2800.00.

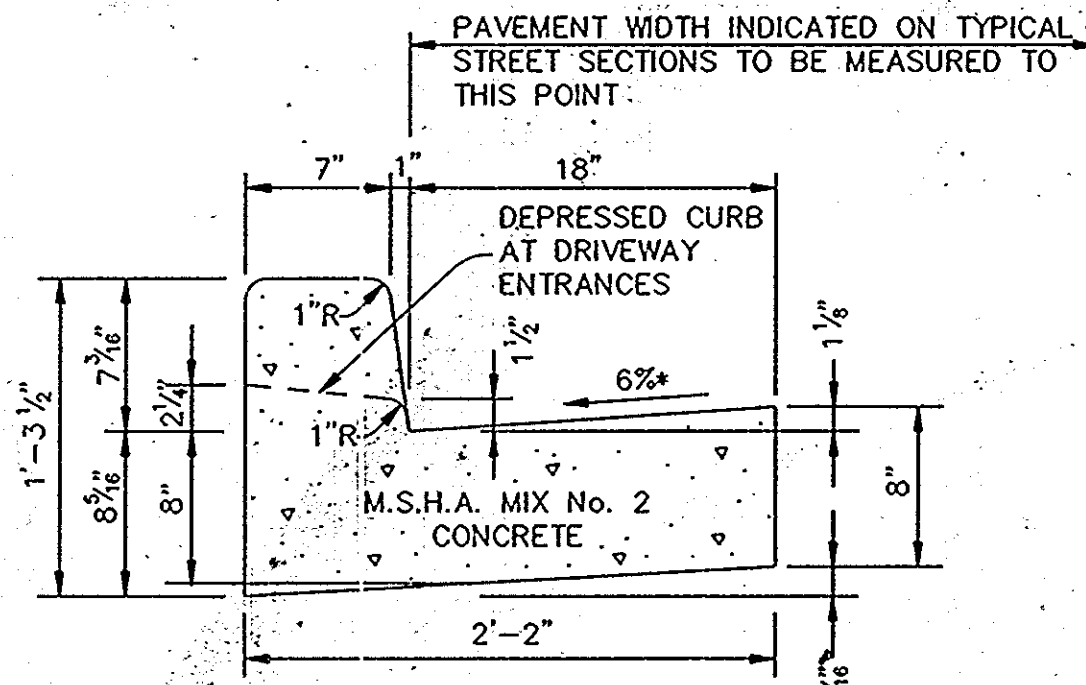
APPROVED  
PLANNING BOARD  
OF HOWARD COUNTY  
DATE: 5-26-94

CATEGORY	ADJACENT TO ROADWAY				ADJACENT TO PERIMETER PROPERTIES			
	1	2	3	4	5	6	7	8
PERIMETER EDGE								
LANDSCAPE TYPE	E	D	C	B	A	D	C	B
LINEAR FEET OF ROADWAY FRONTAGE/PERIMETER	40'	120'	125'	40'	50'	150'	210'	60'
NUMBER OF PLANTS REQUIRED								
SHADE TREES	1	2	3	1	1	4	1	2
EVERGREEN TREES	0	0	0	0	0	0	0	0
FLOWERING TREES	0	0	0	0	0	0	0	0
SHRUBS	10	0	0	0	0	0	0	0
NUMBER OF PLANTS PROVIDED								
SHADE TREES	1	2	3	1	1	4	1	2
EVERGREEN TREES	0	0	0	0	0	0	0	0
FLOWERING TREES	0	0	0	0	0	0	0	0
SHRUBS	10	0	0	0	0	0	0	0

**DOBBIN ROAD**  
MINOR ARTERIAL  
80' R/W  
HOWARD COUNTY

PLAN  
SCALE: 1"=20'

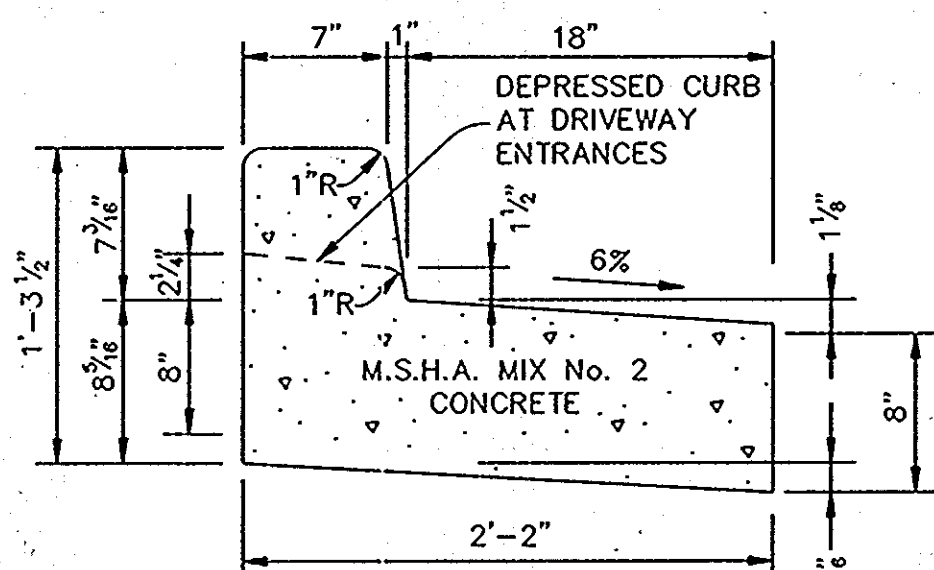




HOWARD COUNTY DESIGN MANUAL, VOLUME IV, STANDARD SPECIFICATIONS AND DETAILS FOR CONSTRUCTION (DRAWING R-3.01).

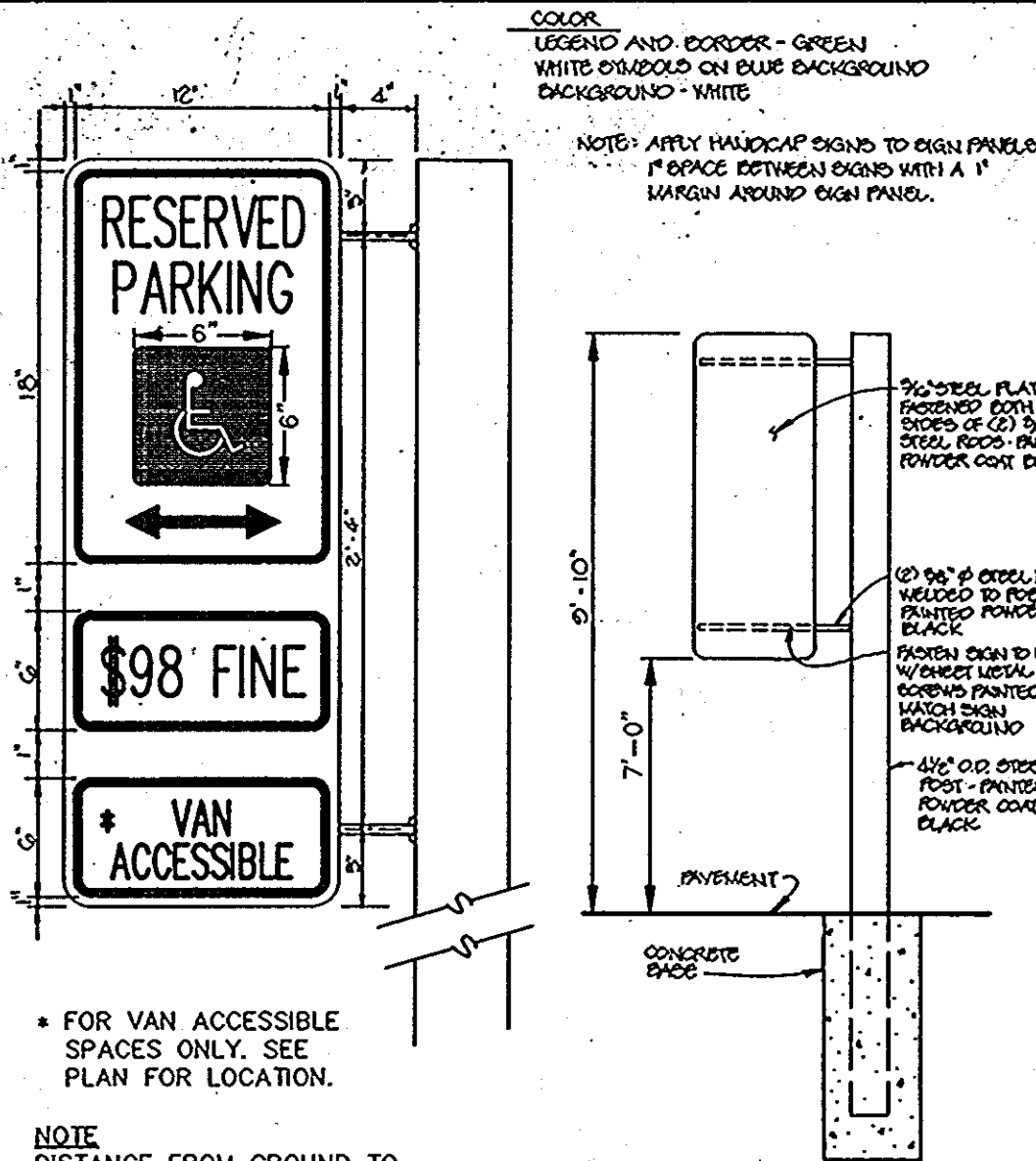
**STANDARD 7" COMBINATION CURB AND GUTTER**

NO SCALE



**REVERSE 7" COMBINATION CURB AND GUTTER**

NO SCALE

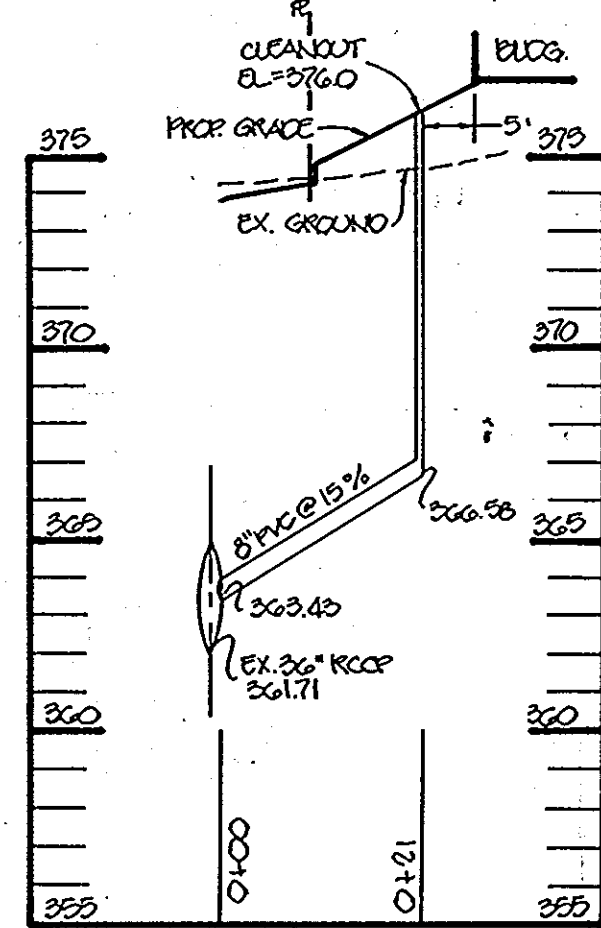


FOR VAN ACCESSIBLE SPACES ONLY. SEE PLAN FOR LOCATION.

NOTE: DISTANCE FROM GROUND TO BOTTOM OF SIGN TO BE 7'.

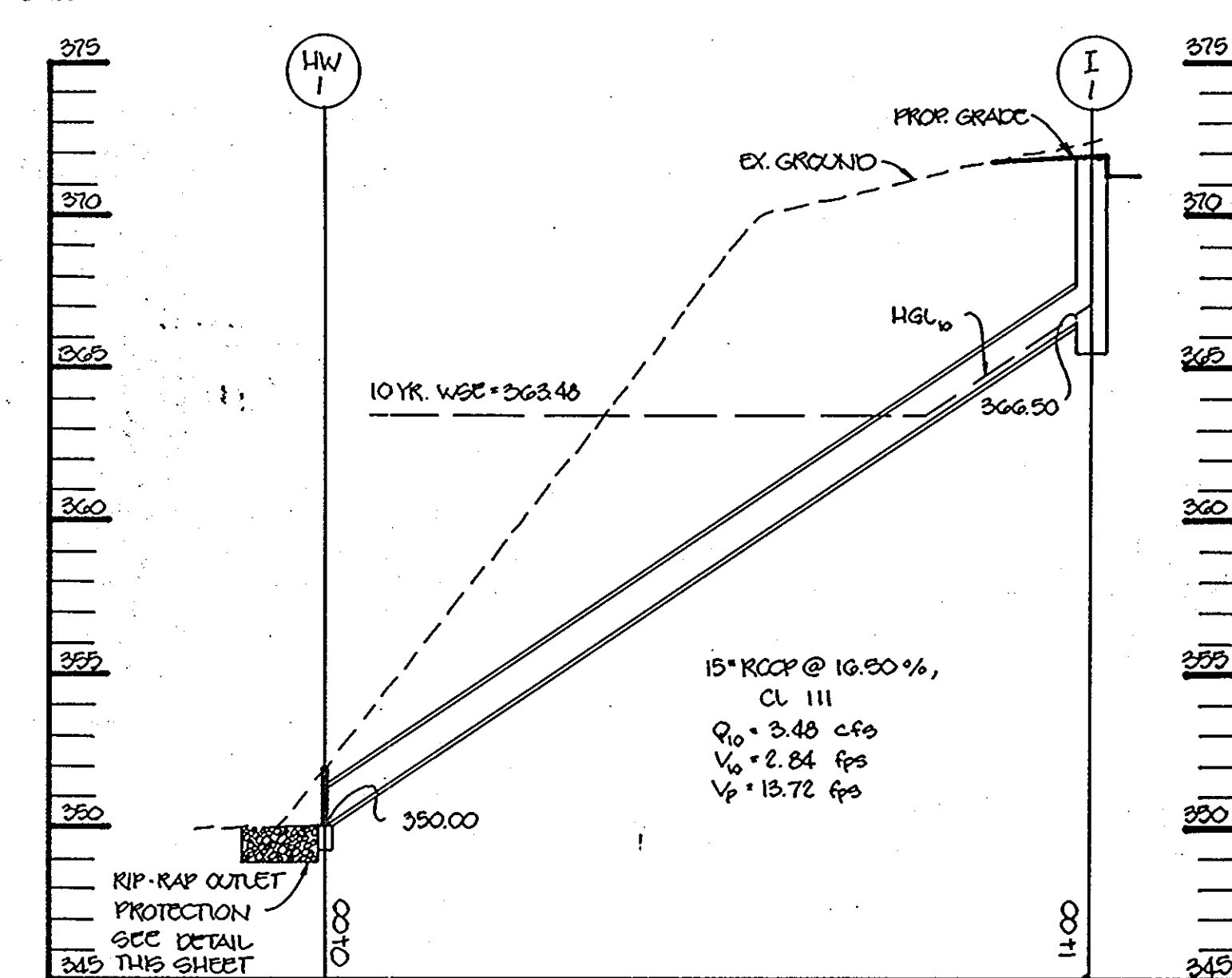
**HANDICAP SIGN DETAIL**

NO SCALE



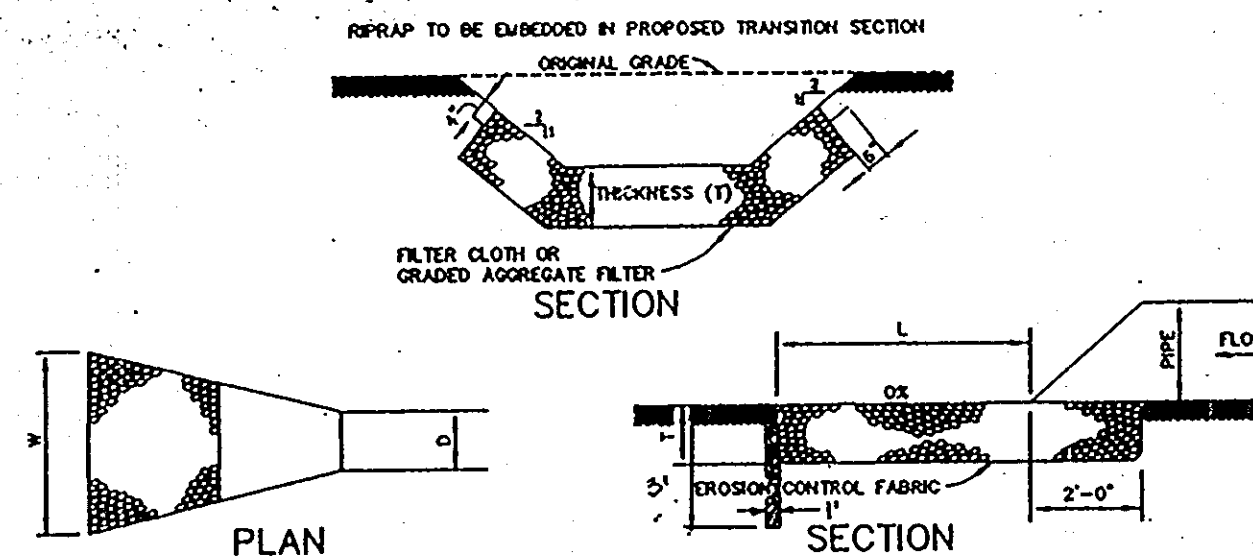
**ROOF DRAIN PROFILE**

SCALE: HOR: 1"=20' VERT: 1"=5'



**STORM DRAIN PROFILE**

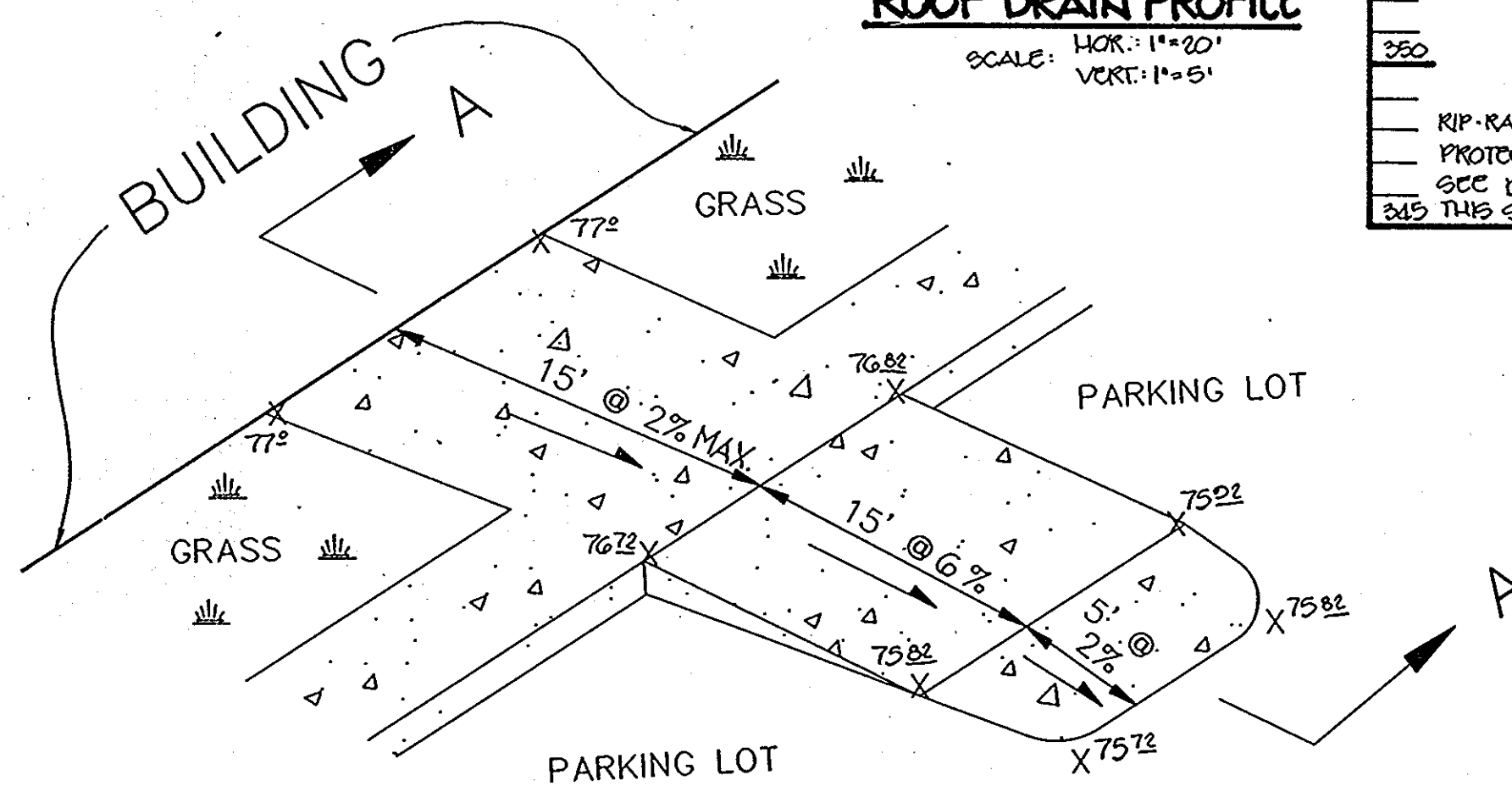
SCALE: HOR: 1"=20' VERT: 1"=5'



STRUCTURE	MEDIUM STONE DIA.	LENGTH (L)	WIDTH (W)	THICKNESS (T)
HW-1	8"	10'	12'	1.2'

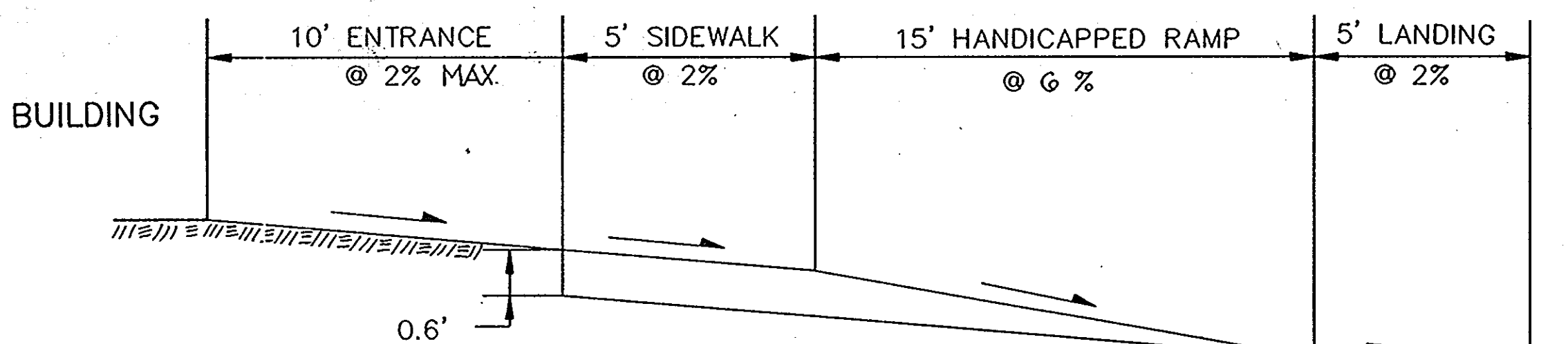
**RIPRAP OUTLET PROTECTION DETAIL**

NO SCALE



**HANDICAPPED RAMP DETAIL**

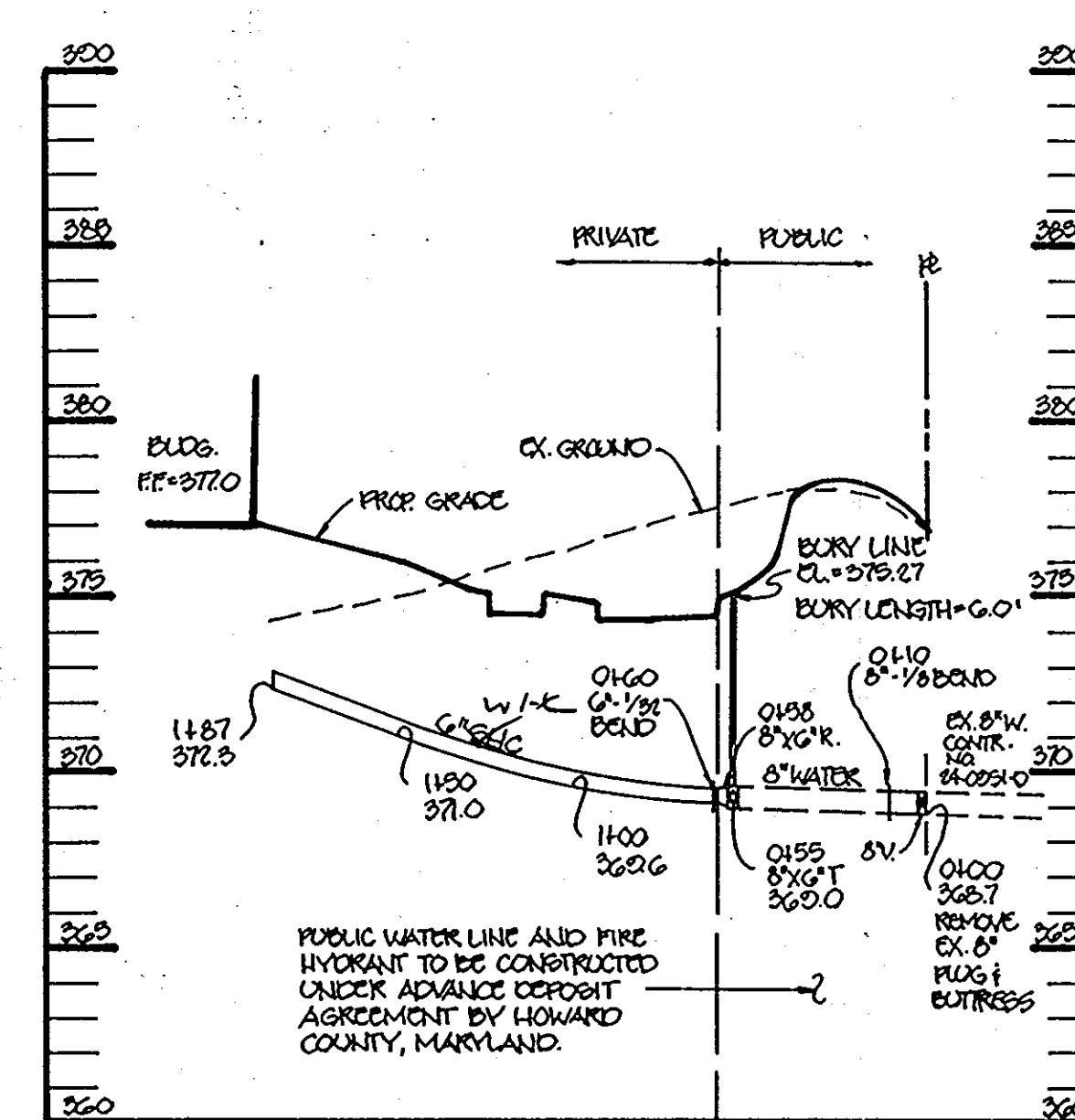
NO SCALE



**SECTION A-A**

NO SCALE

STRUCTURE	TYPE	LOCATION	SCHEDULE		TOP ELEV.	HO. CO. STD. DETAIL
			IN	OUT		
I-1	TYPE - S	SEE PLAN	-	366.50	371.00	SD 4.54
HW-1	TYPE - C	SEE PLAN	-	350.00	352.00	SD 5.21



**6" WHC PROFILE**

SCALE: HOR: 1"=50' VERT: 1"=5'

APPROVED: FOR PUBLIC WATER AND PUBLIC SEWERAGE SYSTEMS, HOWARD COUNTY HEALTH DEPARTMENT.

APPROVED: HOWARD COUNTY DEPARTMENT OF PLANNING AND ZONING.

APPROVED: FOR PUBLIC WATER, PUBLIC SEWERAGE, STORM DRAINAGE SYSTEMS AND PUBLIC ROADS.

APPROVED: FOR PUBLIC WATER AND PUBLIC SEWERAGE SYSTEMS, HOWARD COUNTY HEALTH DEPARTMENT.

DATE NO REVISION

OWNER: THE HOWARD RESEARCH AND DEVELOPMENT CORPORATION  
 DEVELOPER: MANDEKIN CORPORATION

PROJECT: BLOCKBUSTER VIDEO

AREA: DUBBIN ROAD COMMERCIAL CENTER, 1/11 PARCEL "B" TAX MAP 38 PARCEL 306-15 6th ELECTION DISTRICT HOWARD COUNTY, MARYLAND

TITLE: NOTES & DETAILS

RIEMER MUEGGE & ASSOCIATES, INC.  
 Planners • Engineers • Surveyors  
 8818 Centre Park Drive • Suite 200 • Columbia, Md. 21045  
 410-997-8900 FAX: 410-997-9282

APPROVED  
 PLANNING BOARD  
 OF HOWARD COUNTY  
 DATE: 5-26-94

7.12.94  
 DATE  
 F-81-36 FDP-132-A-1  
 SDP-01-40  
 DESIGNED BY: J.C.O.  
 DRAWN BY: J.C.O.  
 PROJECT NO: 98200  
 DATE: JULY 12, 1994  
 SCALE: AS SHOWN  
 DRAWING NO. 6 OF 6

JAYKANT D. PAREKH #19148