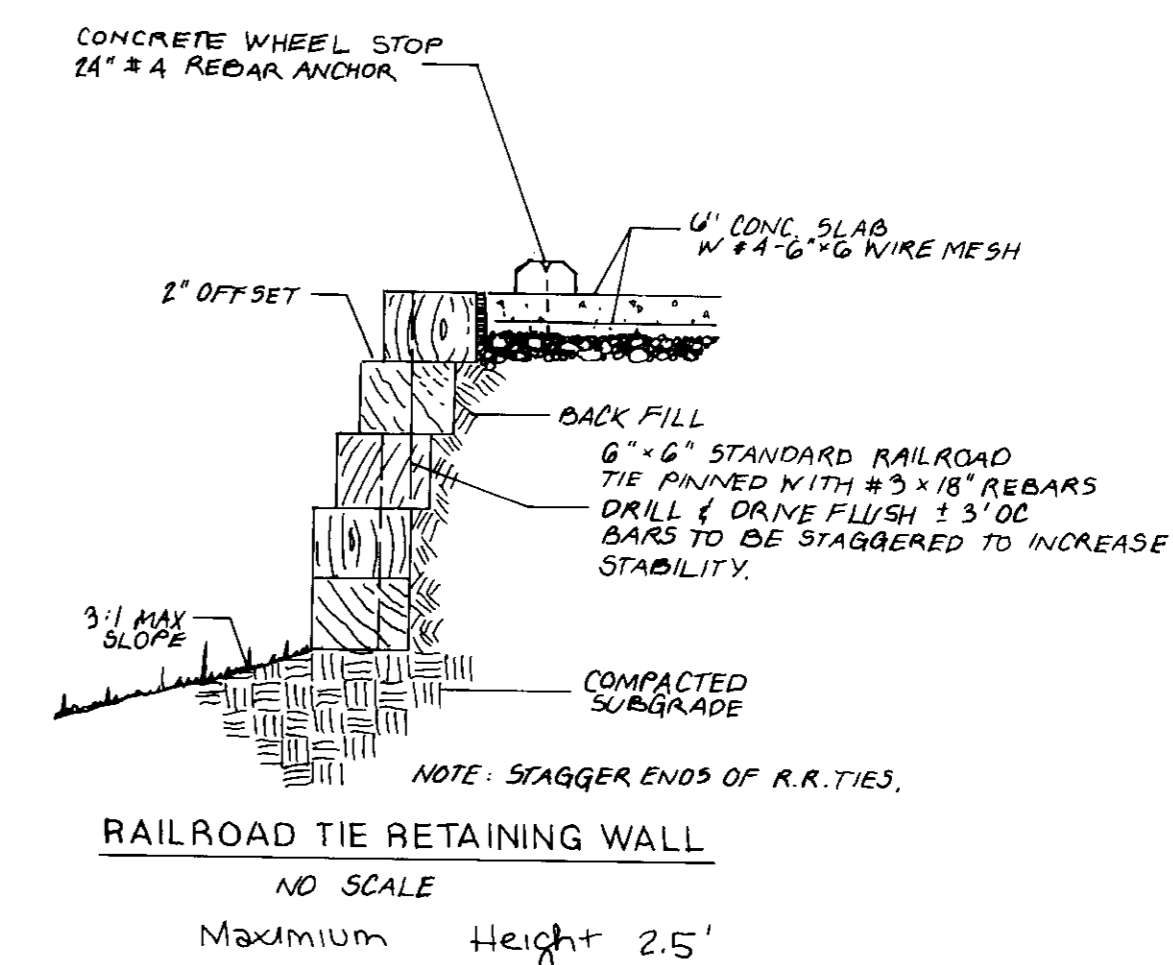
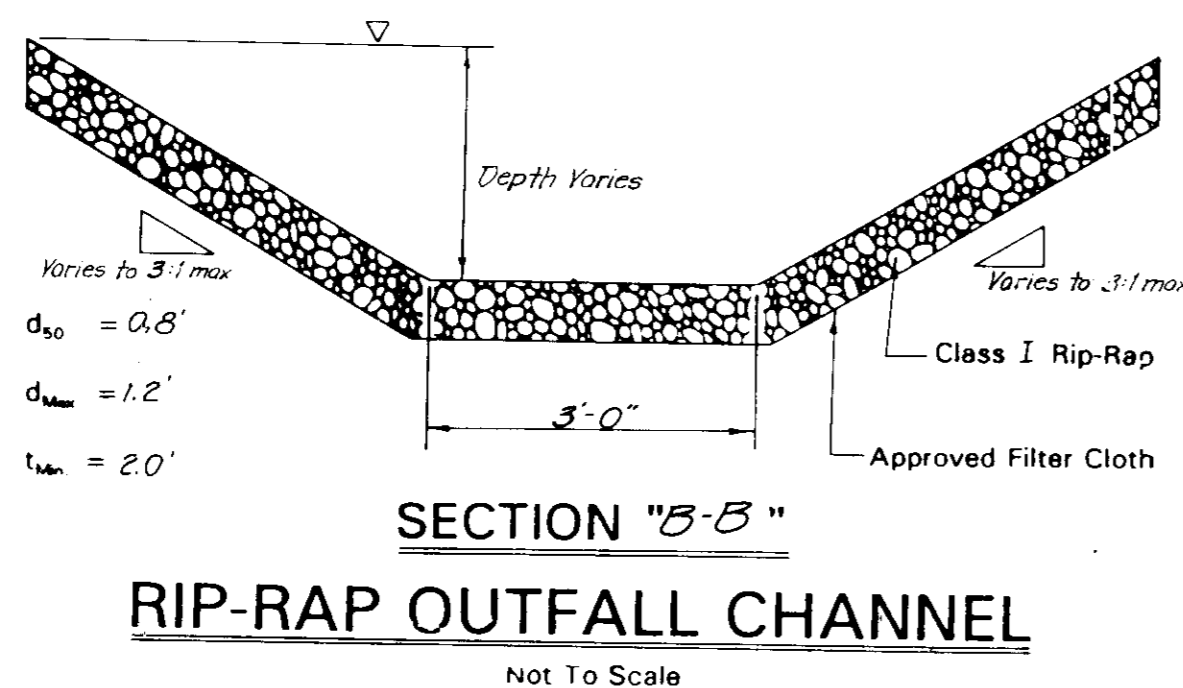
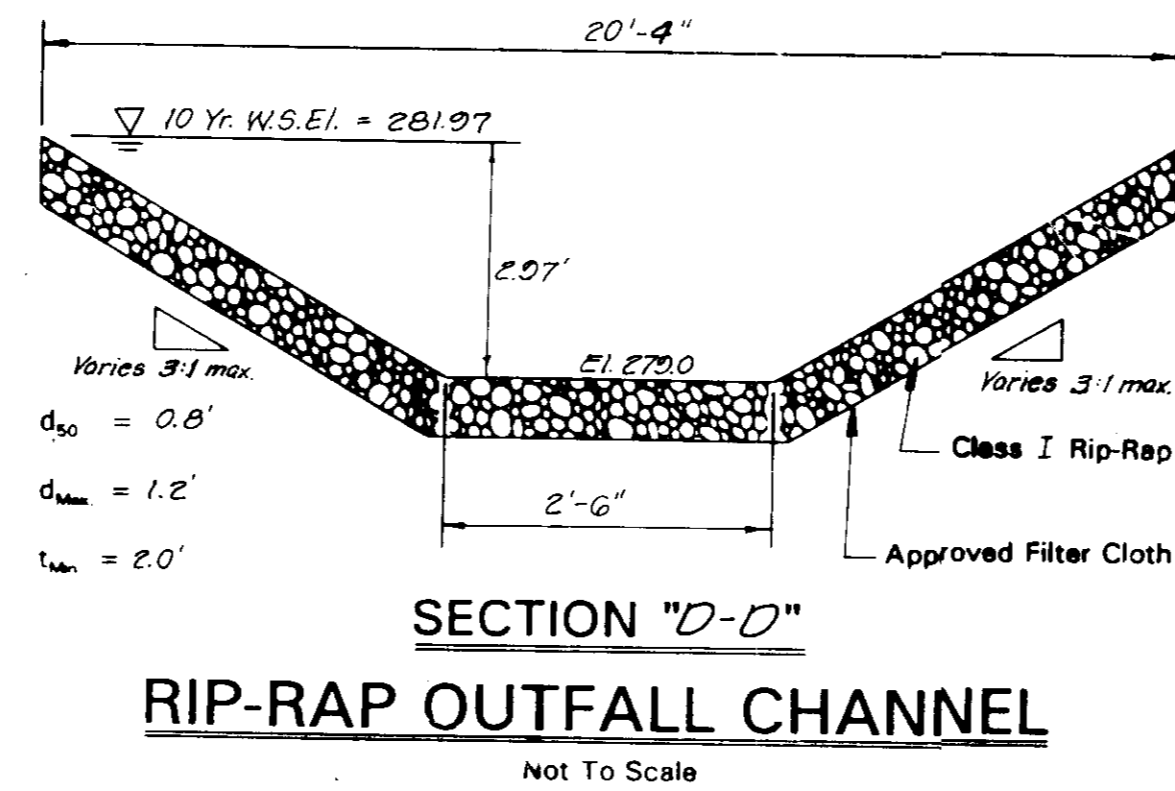
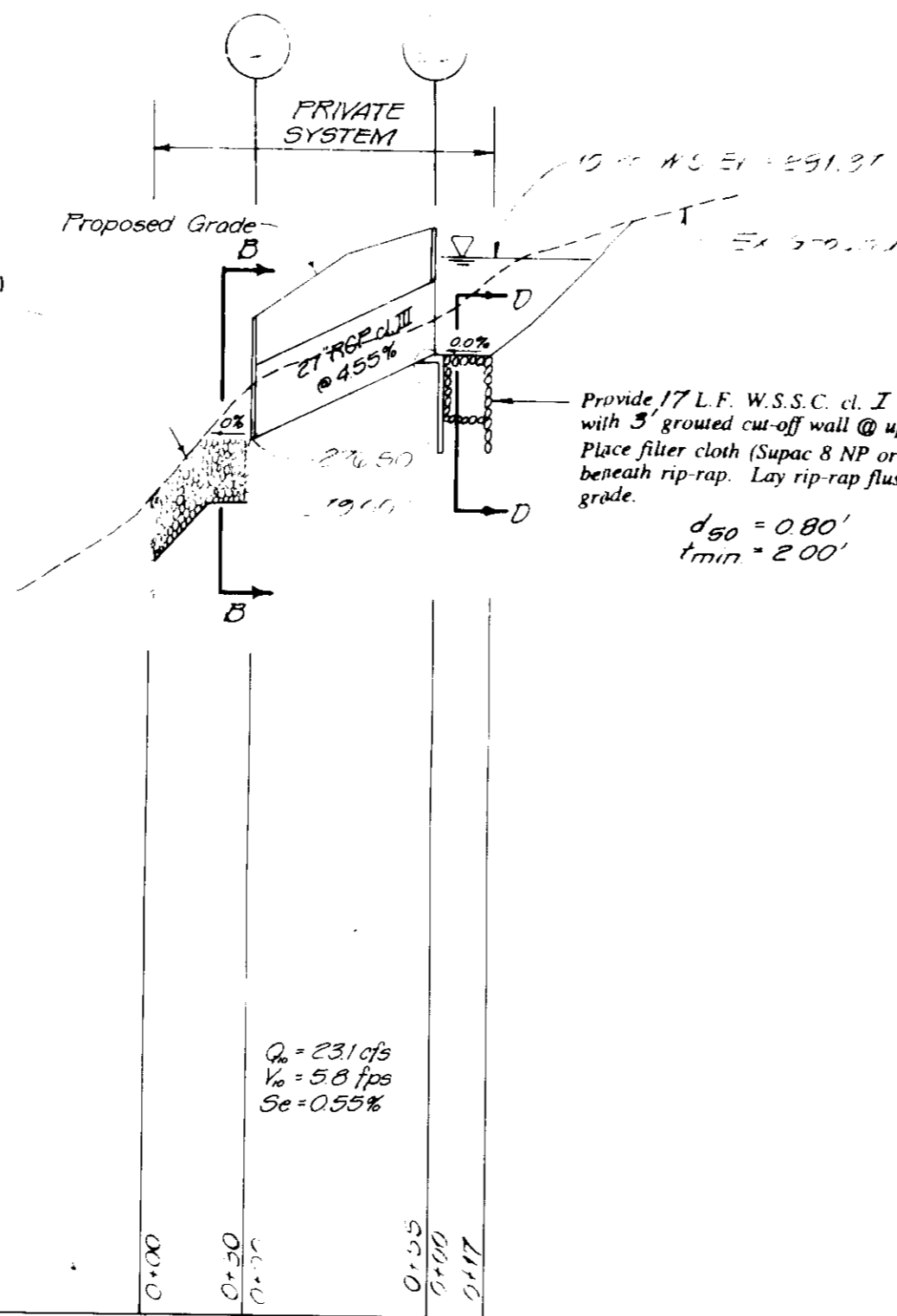


James M. Boyer, P.E., S.E. 8/2/93
Joseph Kettle 8/3/93
Gina Swannick 8/30/93
Laura P. ...
Paul M. ... 8/26/93

GENERAL STORM DRAIN NOTES

- All storm drains shall be constructed in accordance with the Howard County standard specifications and details for construction.
- Type of structure refers to the latest Howard County standard specifications and details for construction.
- Information concerning underground utilities was obtained from available records, but the contractor must determine the exact location and elevation of the mains by digging test pits by hand at all utility crossings well in advance of trenching. If clearances are less than shown on this plan or twelve (12) inches, whichever is less, contact the Howard County Department of Public Works and the inspecting engineer before proceeding with construction.
- Remove all unsuitable material and backfill with compacted bank run gravel to provide firm bearing for storm drain pipe.
- Call "Miss Utility" at 1-800-257-7777 forty-eight (48) hours prior to beginning excavation to determine the location of existing facilities.
- The "Miss Utility" Verification Number (ticket number) must be updated every ten (10) days.
- Contractor shall be responsible for any damage within the public right-of-way during on-site development.
- The contractor or developer shall contact the construction inspection division 24 hours in advance of commencement of work at (410) 313-1880.

Provide 30 L.F. W.S.S.C. cl. I ungrouted rip-rap with 3' grouted cut-off wall @ downstream end. Lay in accordance with D.E.R. st'd. SD/35.0 Place filter cloth (Supac 8 NP or approved equal) beneath rip-rap. Lay rip-rap flush with proposed grade. $d_{50} = 0.80'$ $t_{min} = 2.00'$



No.	TYPE	WIDTH DIAM.	INV. ELEV.	TOP ELEV.		STANDARD DETAIL
				UPPER	LOWER	
H-20	Type A Headwall for 27" R.C.P.		278.00	282.75		HO.CO. SFD No. SD 5.11
EN-8	Type C Endwall for 27" R.C.P.		275.50	280.00		HO.CO. SFD No. SD 5.21
REMARKS: * Construct endwall using dimensions associated with 30" diam. pipe.						

FROM	TO	SIZE	TYPE	LENGTH
TOTAL				55'
REMARKS:				

STORMWATER MANAGEMENT PLAN

**MARYLAND CHURCH OF GOD
CHRISTIAN RETREAT CENTER**
 PARCEL LTD. LIDER 740 FOLIO 323 TAX MAP 41
 57' ELECTION D. ST. R107
 HOWARD COUNTY, MARYLAND

OWNER APPLICANT
 MARYLAND CHURCH OF GOD STATE HEADQUARTERS
 1340 LONG VIEW ROAD
 CALUMDIA, MARYLAND
 21044
 ATTN: BILLY J. ONEIL

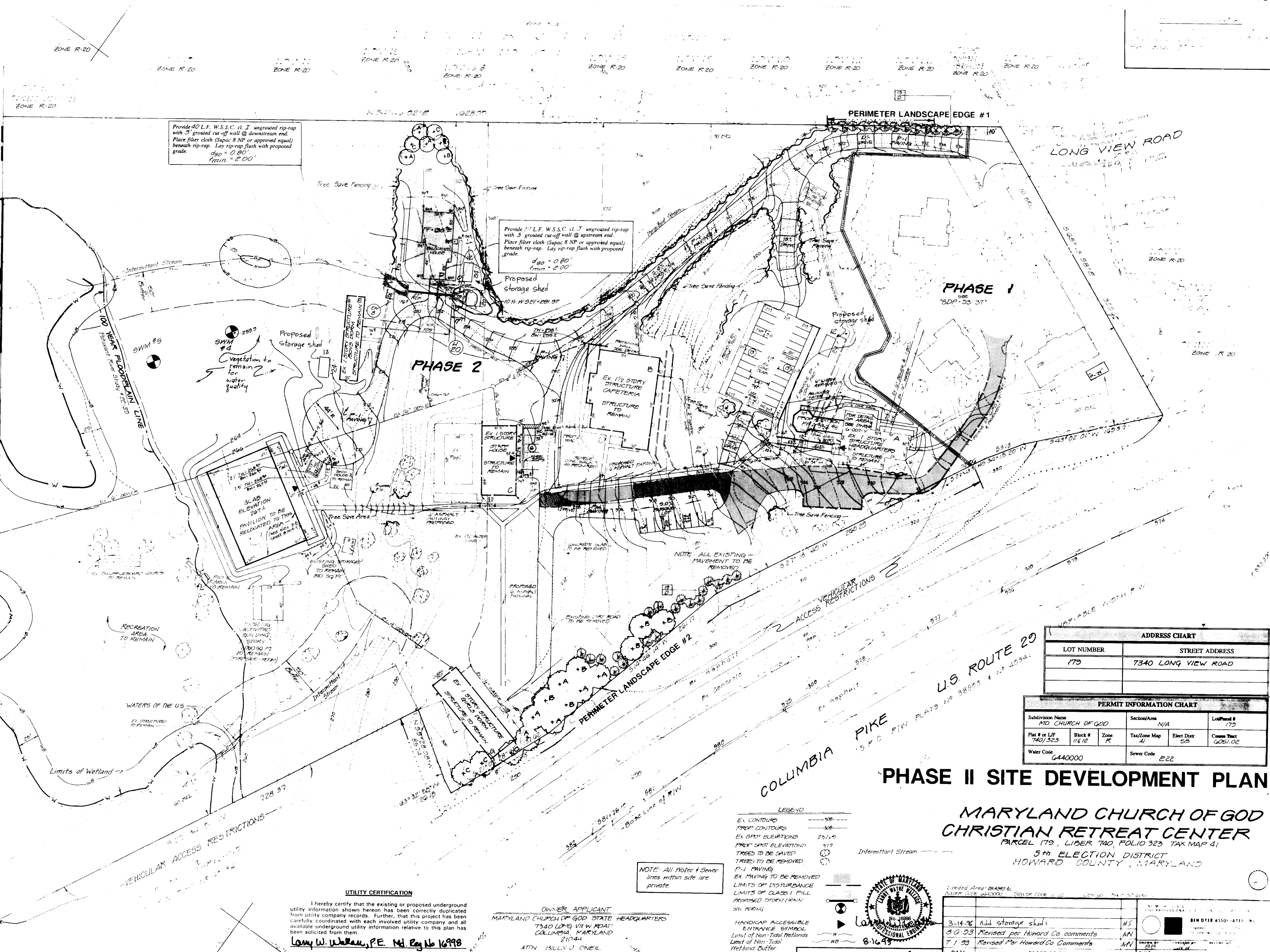
SHEET NO 2 of 6

DATE	DESCRIPTION	BY
8-5-93	Revised per Howard County comments	MN
7-14-93	Revised per Howard County comments	MAN
8-16-93	As Shown	J-92020
	REVISIONS	May, 1993

APPROVED FOR PUBLIC WATER AND PUBLIC SEWERAGE SYSTEMS
 HOWARD COUNTY HEALTH DEPARTMENT
 APPROVED FOR PUBLIC WATER AND PUBLIC SEWERAGE SYSTEMS
 HOWARD COUNTY DEPARTMENT OF PLANNING AND ZONING
 APPROVED FOR PUBLIC WATER AND SEWERAGE, STORM DRAIN SYSTEMS
 AND PUBLIC ROADS
 HOWARD COUNTY DEPARTMENT OF PUBLIC WORKS

- GENERAL NOTES**
- Boundary and topography prepared by Ben Dyer Associates, Inc.
 - A special exception was applied for and approved by Howard County Board of Appeals, Case #BA 92-27 E, N & V dated September 25, 1992.
 - Total site area: 1,238,581 sq. ft. or 28.4339 acres
 - Floodplain area: 494,928 sq. ft. or 11.361 acres
 - This site is served by public water and sewer.
 - Property is zoned R-R and has setbacks of:
 Front 75 feet from public street right-of-way
 Side 30 feet &
 Rear 60 feet from public street right-of-way
 - Parking Required: Case #BA 92-27 E, N & V provision of 45 spaces on-site to meet parking requirements for retreat facilities and administrative offices; and two spaces for each residence.
 - Parking provided: 53 standard spaces
 - Proposed use/improvements:
 Relocated Pavilion - Church services and functions
 Relocated House - Caretakers residence
 Addition to Main Building - Offices
 Removing gravel drives and replacing with P-1 paving
 - Lot coverage permitted: 20%
 - Proposed lot coverage: 41,820 sq. ft. or 5.6%
 - Legal description: Liber 740 of Folio 323
 - Footings to rest on virgin soil where possible. All fill within the building to be Class I structural fill (95% of maximum dry density as determined by the modified Proctor procedure ASTM D-1557-70). All fill under pavement to be Class II structural fill (minimum 90% compaction). All landscape areas to be Class III.
 - Minimum grade on other than paving - 2% (1-1/2% in drainage swales)
 Maximum slopes - 3:1
 - All grades shall slope away from the buildings at a minimum rate of 4% (5" in 10') to a maximum rate of 33% (36" in 10') to a point 10' from the front face or back face of building and 4' from the side face of building.
 - Handrails shall be required only when the stairway or ramp constructions services to provide a change of elevation from one level to another in excess three or 22" in vertical heights.
 - All structures shall be fully sprinklered in accordance with NFPA standards.
 - No encroachments are proposed within 100-year floodplain limits.
 - Building Coverage: Remaining Proposed Subtotal
 Phase I 0 sf. 8,000 sf. 8,000 sf.
 Phase II 44,000 sf. 871 sf. 44,871 sf.
 TOTAL 52,871 sf.
 - Phase II: Limit of Submission: 17.9 Ac.
 Total Area: 26.25 Ac.
 - Phase I was approved under SDP 93-37.

NOTE: On August 3, 1993, the Site Development Plan, SDP-93-109, was granted a waiver from Section 6.116(a)(2)(ii) to permit the removal of vegetative cover and grading within the 50 ft. intermittent stream buffer to construct a drainage system and widen and pave existing gravel driveways. Waiver petition file number (WP-84-02).



Provide 40 L.F. W.S.S.C. cl. I ungrouted rip-rap with 3' grouted cut-off wall @ downstream end. Place filter cloth (Supac 8 NP or approved equal) beneath rip-rap. Lay rip-rap flush with proposed grade.
 Slope = 0.80'
 Min. = 2.00'

Provide 17 L.F. W.S.S.C. cl. I ungrouted rip-rap with 3' grouted cut-off wall @ upstream end. Place filter cloth (Supac 8 NP or approved equal) beneath rip-rap. Lay rip-rap flush with proposed grade.
 Slope = 0.80'
 Min. = 2.00'

SWM #2
 Vegetation to remain for water quality

NOTE: All Water & Sewer lines within site are private.

UTILITY CERTIFICATION

I hereby certify that the existing or proposed underground utility information shown hereon has been correctly duplicated from utility company records. Further, that this project has been carefully coordinated with each involved utility company and all available underground utility information relative to this plan has been solicited from them.

Larry W. Walker, P.E. Md. Reg. No. 16998

OWNER APPLICANT
 MARYLAND CHURCH OF GOD STATE HEADQUARTERS
 7340 LONG VIEW ROAD
 COLUMBIA, MARYLAND 21044
 ATTN: BILLY J. ONEIL

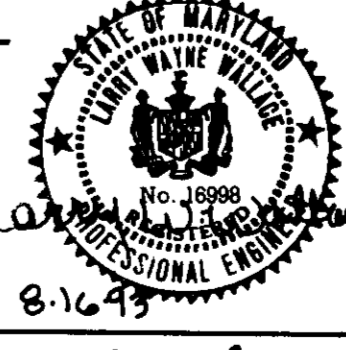
- LEGEND**
- EX. CONTOURS
 - PROP. CONTOURS
 - EX. SPOT ELEVATIONS
 - PROP. SPOT ELEVATIONS
 - TREES TO BE SAVED
 - TREES TO BE REMOVED
 - P-1 PAVING
 - EX. PAVING TO BE REMOVED
 - LIMITS OF DISTURBANCE
 - LIMITS OF CLASS I FILL
 - PROPOSED STORM DRAIN
 - SOIL BORING
 - HANDICAP ACCESSIBLE ENTRANCE SYMBOL
 - Limit of Non-Tidal Wetlands
 - Wetland Buffer

ADDRESS CHART	
LOT NUMBER	STREET ADDRESS
179	7340 LONG VIEW ROAD

PERMIT INFORMATION CHART				
Subdivision Name	Section/Arm	Lot/Parcel #	Water Code	Sewer Code
MD CHURCH OF GOD	N/A	179	6440000	E22
Plot # of L.P.	Block #	Zone	Tax/Zone Map	Elect. Dist.
740/323	116/12	R	41	59
Water Code		Sewer Code		
6440000		E22		

PHASE II SITE DEVELOPMENT PLAN

**MARYLAND CHURCH OF GOD
 CHRISTIAN RETREAT CENTER**
 PARCEL 179, LIBER 740, FOLIO 323 TAX MAP 41
 5th ELECTION DISTRICT
 HOWARD COUNTY, MARYLAND

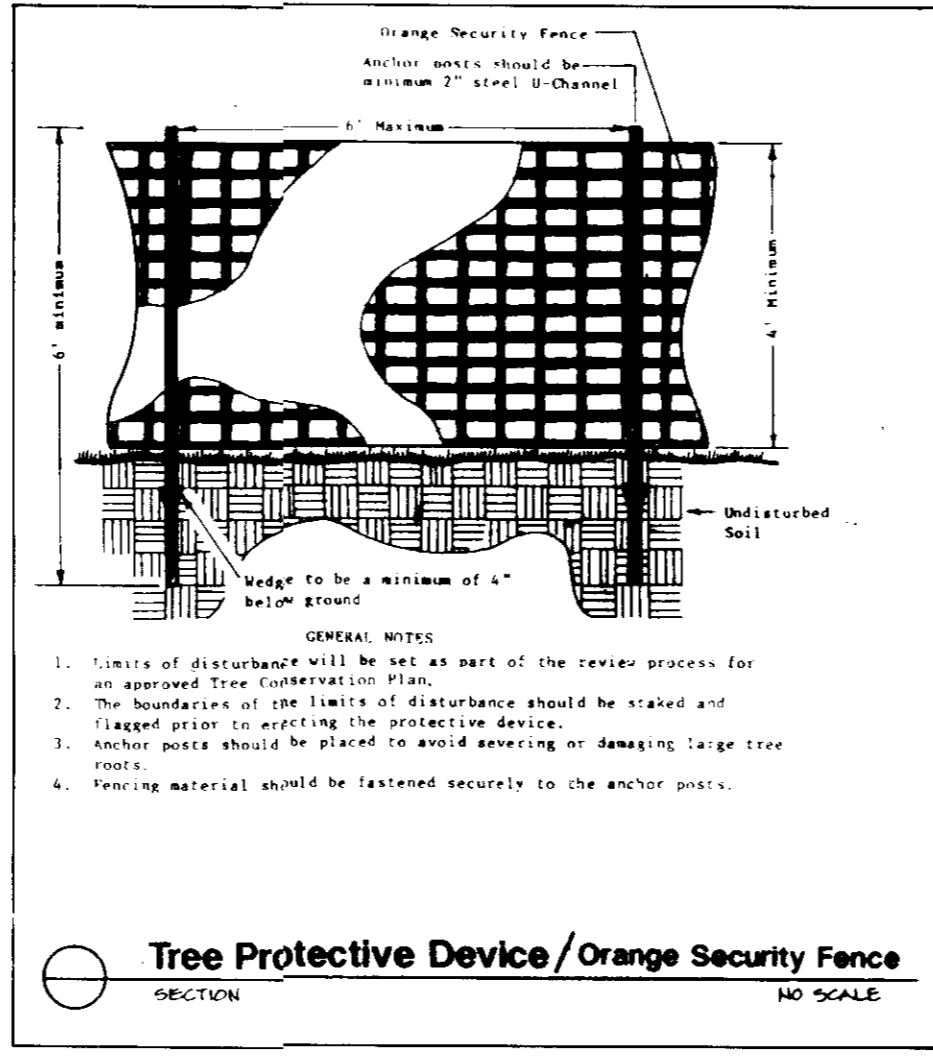
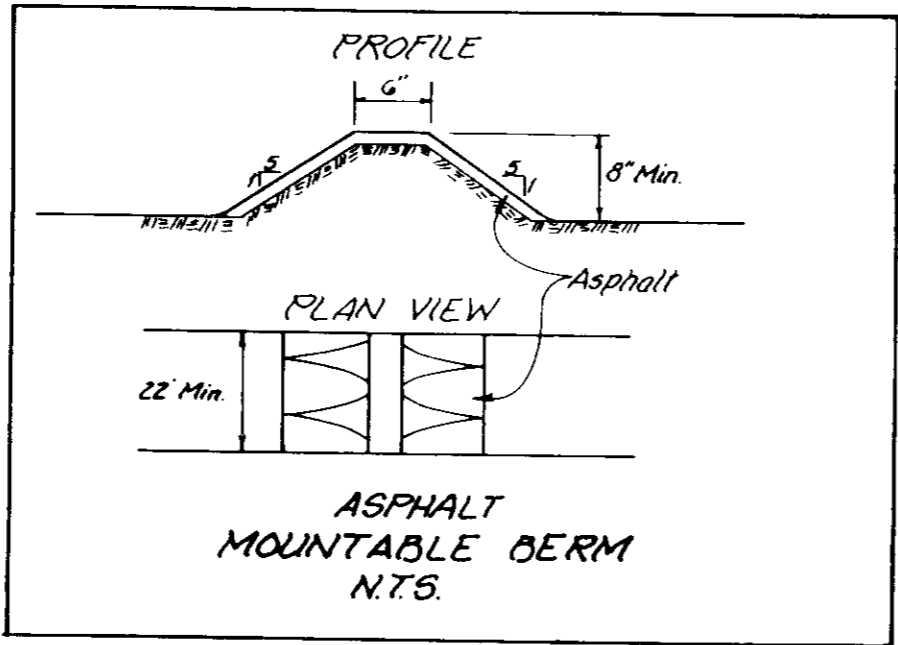
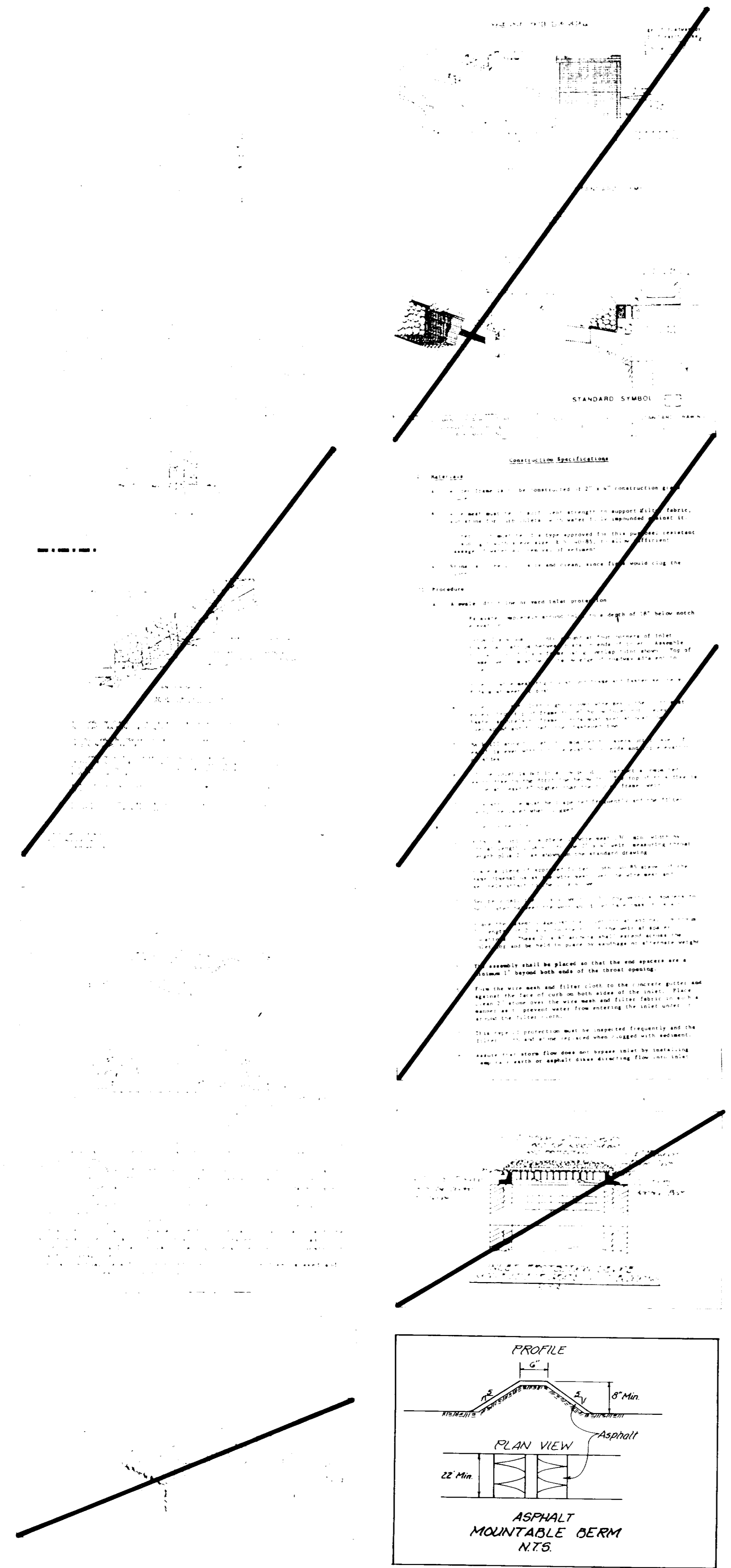


DATE	DESCRIPTION	BY
3-14-93	Add storage sheds	MS
8-6-93	Revised per Howard Co comments	MN
7-1-93	Revised Per Howard Co Comments	MN

SHEET NO. 1 of 6

SDP-93-109

By the Developer:
 "I certify that all development and construction will be done according to this plan, and that any responsible personnel involved in the construction project will have a Certificate of Attendance at a Department of the Environment Approved Training Program for the Control of Sediment and Erosion before beginning the project. I also authorize periodic onsite inspection by the Howard Soil Conservation District."
Carly J. Oriel 8/10/93
 Signature of Developer Date
 By the Engineer:
 "I certify that this plan for erosion and sediment control represents a practical and workable plan based on my personal knowledge of the site conditions and that it was prepared in accordance with the requirements of the Howard Soil Conservation District."
 Larry W. Dallow 8-16-93
 Signature of Engineer Date
 Printed name below signature
LARRY W. DALLOW
 Reviewed for HOWARD SOIL CONSERVATION DISTRICT
 U.S. SOIL CONSERVATION SERVICE
 THIS DEVELOPMENT PLAN IS APPROVED FOR SOIL EROSION AND SEDIMENT CONTROL BY THE HOWARD SOIL CONSERVATION DISTRICT
Robert K. ... 8/20/93
 Howard S.C.D. Date



OPERATION SPECIFICATIONS

MATERIAL

1. All erosion control structures shall be constructed of 12" x 12" x 12" concrete blocks.

2. All erosion control structures shall be constructed of 12" x 12" x 12" concrete blocks.

3. All erosion control structures shall be constructed of 12" x 12" x 12" concrete blocks.

4. All erosion control structures shall be constructed of 12" x 12" x 12" concrete blocks.

5. All erosion control structures shall be constructed of 12" x 12" x 12" concrete blocks.

6. All erosion control structures shall be constructed of 12" x 12" x 12" concrete blocks.

7. All erosion control structures shall be constructed of 12" x 12" x 12" concrete blocks.

8. All erosion control structures shall be constructed of 12" x 12" x 12" concrete blocks.

9. All erosion control structures shall be constructed of 12" x 12" x 12" concrete blocks.

10. All erosion control structures shall be constructed of 12" x 12" x 12" concrete blocks.

11. All erosion control structures shall be constructed of 12" x 12" x 12" concrete blocks.

12. All erosion control structures shall be constructed of 12" x 12" x 12" concrete blocks.

13. All erosion control structures shall be constructed of 12" x 12" x 12" concrete blocks.

14. All erosion control structures shall be constructed of 12" x 12" x 12" concrete blocks.

15. All erosion control structures shall be constructed of 12" x 12" x 12" concrete blocks.

16. All erosion control structures shall be constructed of 12" x 12" x 12" concrete blocks.

17. All erosion control structures shall be constructed of 12" x 12" x 12" concrete blocks.

18. All erosion control structures shall be constructed of 12" x 12" x 12" concrete blocks.

19. All erosion control structures shall be constructed of 12" x 12" x 12" concrete blocks.

20. All erosion control structures shall be constructed of 12" x 12" x 12" concrete blocks.

21. All erosion control structures shall be constructed of 12" x 12" x 12" concrete blocks.

22. All erosion control structures shall be constructed of 12" x 12" x 12" concrete blocks.

23. All erosion control structures shall be constructed of 12" x 12" x 12" concrete blocks.

24. All erosion control structures shall be constructed of 12" x 12" x 12" concrete blocks.

25. All erosion control structures shall be constructed of 12" x 12" x 12" concrete blocks.

26. All erosion control structures shall be constructed of 12" x 12" x 12" concrete blocks.

27. All erosion control structures shall be constructed of 12" x 12" x 12" concrete blocks.

28. All erosion control structures shall be constructed of 12" x 12" x 12" concrete blocks.

29. All erosion control structures shall be constructed of 12" x 12" x 12" concrete blocks.

30. All erosion control structures shall be constructed of 12" x 12" x 12" concrete blocks.

31. All erosion control structures shall be constructed of 12" x 12" x 12" concrete blocks.

32. All erosion control structures shall be constructed of 12" x 12" x 12" concrete blocks.

33. All erosion control structures shall be constructed of 12" x 12" x 12" concrete blocks.

34. All erosion control structures shall be constructed of 12" x 12" x 12" concrete blocks.

35. All erosion control structures shall be constructed of 12" x 12" x 12" concrete blocks.

36. All erosion control structures shall be constructed of 12" x 12" x 12" concrete blocks.

37. All erosion control structures shall be constructed of 12" x 12" x 12" concrete blocks.

38. All erosion control structures shall be constructed of 12" x 12" x 12" concrete blocks.

39. All erosion control structures shall be constructed of 12" x 12" x 12" concrete blocks.

40. All erosion control structures shall be constructed of 12" x 12" x 12" concrete blocks.

41. All erosion control structures shall be constructed of 12" x 12" x 12" concrete blocks.

42. All erosion control structures shall be constructed of 12" x 12" x 12" concrete blocks.

43. All erosion control structures shall be constructed of 12" x 12" x 12" concrete blocks.

44. All erosion control structures shall be constructed of 12" x 12" x 12" concrete blocks.

45. All erosion control structures shall be constructed of 12" x 12" x 12" concrete blocks.

46. All erosion control structures shall be constructed of 12" x 12" x 12" concrete blocks.

47. All erosion control structures shall be constructed of 12" x 12" x 12" concrete blocks.

48. All erosion control structures shall be constructed of 12" x 12" x 12" concrete blocks.

49. All erosion control structures shall be constructed of 12" x 12" x 12" concrete blocks.

50. All erosion control structures shall be constructed of 12" x 12" x 12" concrete blocks.

51. All erosion control structures shall be constructed of 12" x 12" x 12" concrete blocks.

52. All erosion control structures shall be constructed of 12" x 12" x 12" concrete blocks.

53. All erosion control structures shall be constructed of 12" x 12" x 12" concrete blocks.

54. All erosion control structures shall be constructed of 12" x 12" x 12" concrete blocks.

55. All erosion control structures shall be constructed of 12" x 12" x 12" concrete blocks.

56. All erosion control structures shall be constructed of 12" x 12" x 12" concrete blocks.

57. All erosion control structures shall be constructed of 12" x 12" x 12" concrete blocks.

58. All erosion control structures shall be constructed of 12" x 12" x 12" concrete blocks.

59. All erosion control structures shall be constructed of 12" x 12" x 12" concrete blocks.

60. All erosion control structures shall be constructed of 12" x 12" x 12" concrete blocks.

61. All erosion control structures shall be constructed of 12" x 12" x 12" concrete blocks.

62. All erosion control structures shall be constructed of 12" x 12" x 12" concrete blocks.

63. All erosion control structures shall be constructed of 12" x 12" x 12" concrete blocks.

64. All erosion control structures shall be constructed of 12" x 12" x 12" concrete blocks.

65. All erosion control structures shall be constructed of 12" x 12" x 12" concrete blocks.

66. All erosion control structures shall be constructed of 12" x 12" x 12" concrete blocks.

67. All erosion control structures shall be constructed of 12" x 12" x 12" concrete blocks.

68. All erosion control structures shall be constructed of 12" x 12" x 12" concrete blocks.

69. All erosion control structures shall be constructed of 12" x 12" x 12" concrete blocks.

70. All erosion control structures shall be constructed of 12" x 12" x 12" concrete blocks.

71. All erosion control structures shall be constructed of 12" x 12" x 12" concrete blocks.

72. All erosion control structures shall be constructed of 12" x 12" x 12" concrete blocks.

73. All erosion control structures shall be constructed of 12" x 12" x 12" concrete blocks.

74. All erosion control structures shall be constructed of 12" x 12" x 12" concrete blocks.

75. All erosion control structures shall be constructed of 12" x 12" x 12" concrete blocks.

76. All erosion control structures shall be constructed of 12" x 12" x 12" concrete blocks.

77. All erosion control structures shall be constructed of 12" x 12" x 12" concrete blocks.

78. All erosion control structures shall be constructed of 12" x 12" x 12" concrete blocks.

79. All erosion control structures shall be constructed of 12" x 12" x 12" concrete blocks.

80. All erosion control structures shall be constructed of 12" x 12" x 12" concrete blocks.

81. All erosion control structures shall be constructed of 12" x 12" x 12" concrete blocks.

82. All erosion control structures shall be constructed of 12" x 12" x 12" concrete blocks.

83. All erosion control structures shall be constructed of 12" x 12" x 12" concrete blocks.

84. All erosion control structures shall be constructed of 12" x 12" x 12" concrete blocks.

85. All erosion control structures shall be constructed of 12" x 12" x 12" concrete blocks.

86. All erosion control structures shall be constructed of 12" x 12" x 12" concrete blocks.

87. All erosion control structures shall be constructed of 12" x 12" x 12" concrete blocks.

88. All erosion control structures shall be constructed of 12" x 12" x 12" concrete blocks.

89. All erosion control structures shall be constructed of 12" x 12" x 12" concrete blocks.

90. All erosion control structures shall be constructed of 12" x 12" x 12" concrete blocks.

91. All erosion control structures shall be constructed of 12" x 12" x 12" concrete blocks.

92. All erosion control structures shall be constructed of 12" x 12" x 12" concrete blocks.

93. All erosion control structures shall be constructed of 12" x 12" x 12" concrete blocks.

94. All erosion control structures shall be constructed of 12" x 12" x 12" concrete blocks.

95. All erosion control structures shall be constructed of 12" x 12" x 12" concrete blocks.

96. All erosion control structures shall be constructed of 12" x 12" x 12" concrete blocks.

97. All erosion control structures shall be constructed of 12" x 12" x 12" concrete blocks.

98. All erosion control structures shall be constructed of 12" x 12" x 12" concrete blocks.

99. All erosion control structures shall be constructed of 12" x 12" x 12" concrete blocks.

100. All erosion control structures shall be constructed of 12" x 12" x 12" concrete blocks.

SEDIMENT CONTROL NOTES

1. A minimum of 24 hours notice must be given to the Howard County Office of Inspection and Permits prior to the start of any construction (592 2437).

2. All vegetative and structural practices are to be installed according to the provisions of this plan and are to be in conformance with the 1983 MARYLAND STANDARDS AND SPECIFICATIONS FOR SOIL EROSION AND SEDIMENT CONTROL.

3. Following initial soil disturbance or redistribution, permanent or temporary stabilization shall be completed within 30 calendar days for all perimeter sediment control structures, dikes, perimeter slopes and all slopes greater than 3:1, or 14 days for all other disturbed or planted areas on the project site.

4. A sediment trap/basin shown must be fenced and warning signs posted around their perimeter in accordance with Vol. 1, Chapter 12, of the HOWARD COUNTY DESIGN MANUAL, Storm Drainage.

5. A disturbed area must be stabilized within the time period specified above in accordance with the 1983 MARYLAND STANDARDS AND SPECIFICATIONS FOR SOIL EROSION AND SEDIMENT CONTROL for permanent seedings (Sec. 51) and (Sec. 54), temporary seeding (Sec. 51) and mulching (Sec. 52). Temporary stabilization with mulch alone can only be done when recommended seeding dates do not allow for proper germination and establishment of grasses.

6. All sediment control structures are to remain in place and are to be maintained in operative condition until permission for their removal has been obtained from the Howard County Sediment Control Inspector.

7. Site Analysis

Total Area of Site	2343 Acres
Area Disturbed	11 Acres
Area to be seeded or paved	33 Acres
Area to be vegetatively stabilized	33 Acres
Total C _v	0 Cu yds
Total S _v	0 Cu yds
Waste/water/ borrow area location	NA

8. A sediment control practice which is disturbed by grading activity for placement of utilities must be repaired on the same day of disturbance.

9. Additional sediment controls must be provided, if deemed necessary by the Howard County DPW sediment control inspector.

10. On all sites with disturbed areas in excess of 2 acres, approval of the inspection agency shall be required upon completion of installation of perimeter erosion and sediment controls, but before proceeding with any other earth disturbance or grading. Other building or grading inspection approvals may not be authorized until this initial approval by the inspection agency is made.

PERMANENT SEEDING NOTES

1. Apply to graded or cleared areas not subject to immediate further disturbance where a permanent long-lived vegetative cover is needed.

2. Seed Preparation: Loosen upper three inches of soil by raking, disking or other acceptable means before seeding, if not previously loosened.

3. Seed Application: In lieu of soil test recommendations, use one of the following schedules:

4. Fertilizer: Apply 2 tons per acre dolomitic limestone (82 lbs/1000 sq ft) or urea and 600 lbs per acre 10-10-10 fertilizer (14 lbs/1000 sq ft) before seeding. Harrow or disk into upper three inches of soil. At time of seeding, apply 400 lbs per acre 30-0-0 urea/ammonia fertilizer (19 lbs/1000 sq ft).

5. Mulch: Apply 2 tons per acre dolomitic limestone (82 lbs/1000 sq ft) and 1000 lbs per acre 10-10-10 fertilizer (123 lbs/1000 sq ft) before seeding. Harrow or disk into upper three inches of soil.

6. Seeding: For the periods March 1 thru April 30, and August 1 thru October 15, seed with 60 lbs per acre Kentucky 31 Tall Fescue. For the period May 1 thru July 31, seed with 15 lbs per acre Kentucky 31 Tall Fescue per acre and 2 lbs per acre 00-00-1000 sq ft of seedling mix. During the period of October 16 thru February 28, protect site by: Option (1) 2 tons per acre of well anchored straw mulch and seed as soon as possible in the spring. Option (2) Use soil in this area seed with 60 lbs/acre Kentucky 31 Tall Fescue and mulch with 2 tons/acre well anchored straw.

7. Mulching: Apply 1 1/2 to 2 tons per acre 170 to 90 lbs/1000 sq ft of untreated small grain straw immediately after seeding. Anchor mulch immediately after application using mulch anchoring tool or 18 gal per acre 15 gal/1000 sq ft of emulsified asphalt on flat areas. On slopes 3:1 or higher use 145 gal per acre 18 gal/1000 sq ft for anchoring.

8. Maintenance: Inspect all seeded areas and make needed repairs, replacements and reseedings.

TEMPORARY SEEDING NOTES

1. Apply to cleared or graded areas likely to be redistributed where a short-term vegetative cover is needed.

2. Seed Preparation: Loosen upper three inches of soil by raking, disking or other acceptable means before seeding, if not previously loosened.

3. Seed Application: Apply 60 lbs per acre 10-10-10 fertilizer (14 lbs/1000 sq ft) before seeding. For periods March 1 thru April 30 and from August 15 thru October 15, seed with 12 lbs per acre of annual ryegrass (12 lbs/1000 sq ft). For the period May 1 thru August 14, seed with 15 lbs per acre of annual ryegrass (15 lbs/1000 sq ft). For the period November 15 thru February 28, protect site by: Option (1) 2 tons per acre of well anchored straw mulch and seed as soon as possible in the spring. Option (2) Use soil in this area seed with 60 lbs/acre Kentucky 31 Tall Fescue and mulch with 2 tons/acre well anchored straw.

4. Mulching: Apply 1 1/2 to 2 tons per acre 170 to 90 lbs/1000 sq ft of untreated small grain straw immediately after seeding. Anchor mulch immediately after application using mulch anchoring tool or 18 gal per acre 15 gal/1000 sq ft of emulsified asphalt on flat areas. On slopes 3:1 or higher use 145 gal per acre 18 gal/1000 sq ft for anchoring.

5. Maintenance: Inspect all seeded areas and make needed repairs, replacements and reseedings.

APPROVED: FOR PUBLIC WATER AND PUBLIC SEWERAGE SYSTEMS,
 HOWARD COUNTY HEALTH DEPARTMENT.
Joyce M. ... 8/27/93
 COUNTY HEALTH OFFICER DATE

APPROVED: HOWARD COUNTY OFFICE OF PLANNING & ZONING
James ... 8/31/93
 DIRECTOR DATE

APPROVED: FOR PUBLIC WATER AND SEWERAGE,
 STORM DRAINAGE SYSTEM AND PUBLIC ROADS,
 HOWARD COUNTY DEPARTMENT OF PUBLIC WORKS
James ... 8/27/93
 DIRECTOR DATE

APPROVED: *Robert ...* 8/26/93
 CHIEF, BUREAU OF ENGINEERING DATE

SEQUENCE OF CONSTRUCTION

The work necessary for development of this project will be completed in three phases, as indicated on the plan. In order for the sediment controls to function as designed, it will be necessary to follow this plan as closely as possible.

- SEDIMENT CONTROL AREA I**
1. Install the tree save fence at the locations shown on the plan. Install the stabilized construction entrance (SCE) at the access to the project. This SCE will be used and maintained for vehicular traffic during development of this project through all phases. Install the silt fence as shown. **Week 1**
 2. Begin grading Area I. During grading operations, the existing pavilion will be dismantled and stored. Additionally, the existing pavement and concrete curb will be removed as necessary. Remove the existing building structure. **Weeks 1-8**
 3. Begin construction of the proposed addition to the Headquarters Building. This construction does not need to be completed before moving to future phases. Relocate the existing water line to the location shown. **Weeks 1-8**
 4. As site areas are brought to grade, begin installing the parking and drive areas and the concrete sidewalks. **Weeks 6-8**
 5. Stabilize any remaining disturbed areas using permanent vegetative measures. **As Necessary**
 6. As the site becomes stabilized and with written permission of the inspector, remove the sediment controls, except the SCE, in this phase. **Week 8**

- SEDIMENT CONTROL AREA II**
1. Install tree save fence at the locations shown on the plan. Install the stone outlet structure, earth dikes, asphalt mountable berm, a small portion of the earth dike and the silt fence. **Week 8-16**
 2. Begin grading Area II. During grading operations, remove the existing paving, sidewalks, concrete slab and dirt road as shown on the plan. Install the retaining wall next to the cafeteria. **Weeks 8-16**
 3. Install the 2" water house connection as required for service to the relocated house in Phase III. Any sediment control structures disturbed will be repaired or replaced upon completion of that day's work. **Week 10**
 4. As site areas are brought to final grade, begin installing the parking and drive areas and gravel sidewalks. **Weeks 14-16**
 5. Stabilize any remaining disturbed areas using permanent vegetative measures. Install the landscaping adjacent to Columbia Pike at the girls' dormitory building. **As Necessary**
 6. As the site becomes stabilized and with written permission of the sediment control inspector, remove the sediment controls, except the asphalt mountable berm and the SCE, in this phase. Stabilize immediately any disturbed areas left as a result of removal of these structures. **Week 16**

- SEDIMENT CONTROL AREA III**
1. Install the tree save fence at the locations shown on the plan. Grade and install the storm drain system from STR EWB to H20. Complete grading of the sump area at STR H20, install the rip-rap, and stabilize the area immediately. Construct the earth dikes to divert clean runoff flows to the sump area. Install silt fence around the sump area as necessary to protect it. Install the second earth dike as shown to direct runoff flows away from the pavilion construction site. Install the remaining stone outlet structures, earth dikes, and silt fence on the downhill side of the construction area. **Week 16**
 2. Begin grading Area III. During grading operations, the existing 6" sewer line will be relocated away from the pavilion area. Any sediment control structures disturbed will be immediately repaired at the end of that day's work. **Weeks 16-24**
 3. Re-assemble the pavilion when the pad is brought to final grade and the slab has been poured. Complete the relocation of the house. Install the water and sewer house connections to the structures. **Weeks 18-20**
 4. As site areas are brought to grade, begin installing the parking and drive areas and the gravel pathways. **Weeks 20-23**
 5. Stabilize the remaining disturbed areas using permanent vegetative measures. **As Necessary**
 6. As the site becomes stabilized and with written permission of the inspector, begin removing the sediment control devices, including the mountable berm and stabilized construction entrance. Immediately stabilize any disturbed areas resulting from removal of the structure. **Week 24**

TOTAL ESTIMATED TIME OF CONSTRUCTION: 6 MONTHS

SEDIMENT CONTROL PLAN
MARYLAND CHURCH OF GOD
CHRISTIAN RETREAT CENTER
 PARCEL 178 LIBER 140 FOLIO 323 TAX MAP 41
 5th ELECTION DISTRICT
 HOWARD COUNTY, MARYLAND

RECORD REFERENCE: LIBER 299 FOLIO 327 SHEET 6 OF 6

ONE MEIRD PLAZA
 8100 PROFESSIONAL PLCE LANDOVER MARYLAND 20785
BEN DYER ASSOCIATES, INC.
 Engineers, Surveyors / Planners
 TELEPHONE (301) 458-9200

DESIGNED BY: *Ben Dyer* DATE: 7-20-90
 CHECKED BY: *Ben Dyer* DATE: 7-20-90
 DRAWN BY: *Ben Dyer* DATE: 7-20-90
 DATE: July, 1993
 SCALE: As Shown
 SHEET NO: 40003-Y
 PROJECT NO: SDP-93-109