

Enlarged View Of Existing House
SCALE: 1" = 10'

VEGETATIVE ANALYSIS

LEGEND	
SYMBOL	TREE
1	12" PINE
2	18" PINE
3	10" TREE
4	8" TREE
5	16" PINE
6	6" SASSAFRAS
7	12" PINE
8	3" SASSAFRAS
9	10" WILLOW
10	3' WIDE HEDGE
11	12" WILLOW
12	8" MAPLE
13	10" MAPLE

PARKING TABULATION

	REQUIRED	PROVIDED
REPAIR FACILITY (1 PER 500 SQ. FT.) 3840 SQ. FT.	8	10
OFFICE SPACE (7 PER 10 EMPLOYEES) 2 EMPLOYEES M.C. EMPLOYEES	2 (1)	4 (2)
TOTAL	10	14

APPROVED: FOR PUBLIC WATER AND PUBLIC SEWERAGE SYSTEMS.
HOWARD COUNTY HEALTH DEPARTMENT

James M. ... 4/23/92
COUNTY HEALTH OFFICER DATE

APPROVED: HOWARD COUNTY DEPARTMENT OF PLANNING & ZONING

... 4/27/92
DIRECTOR DATE

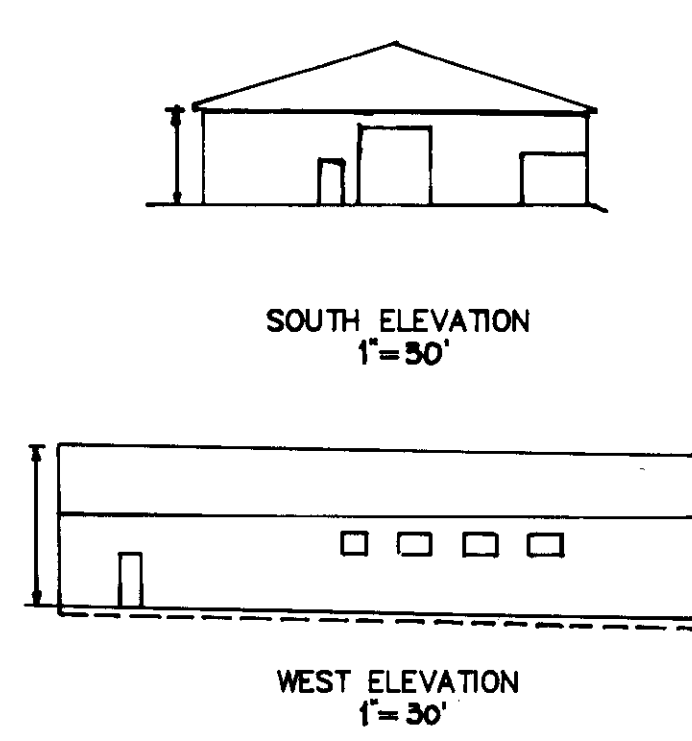
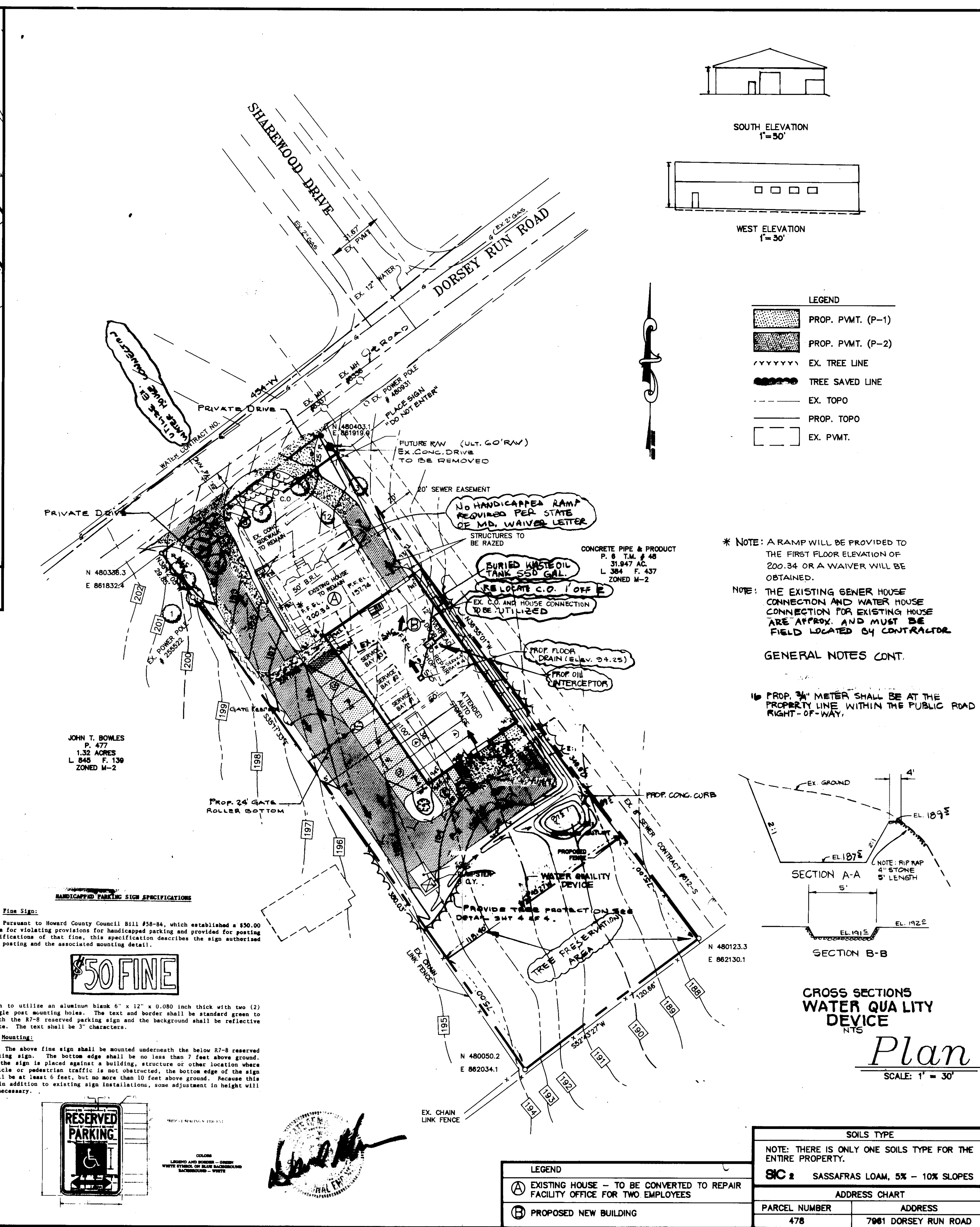
APPROVED: FOR PUBLIC WATER AND SEWERAGE, STORM DRAINAGE SYSTEMS AND PUBLIC ROADS.
HOWARD COUNTY DEPARTMENT OF PUBLIC WORKS.

... 4/21/92
DIRECTOR DATE

APPROVED: 4-15-92
CHIEF BUREAU OF ENGINEERING

APPROVAL STAMP

NO.	DATE	REVISION	BY
1	4/10/92	REV. SEWER & WATER SYSTEMS	DW
2	12/16/92	REV. WASTE OIL TANK (6000 GAL)	DM
3	2/19/93	REV. LOCATION OF WATER QUALITY DEVICE	DW



LEGEND

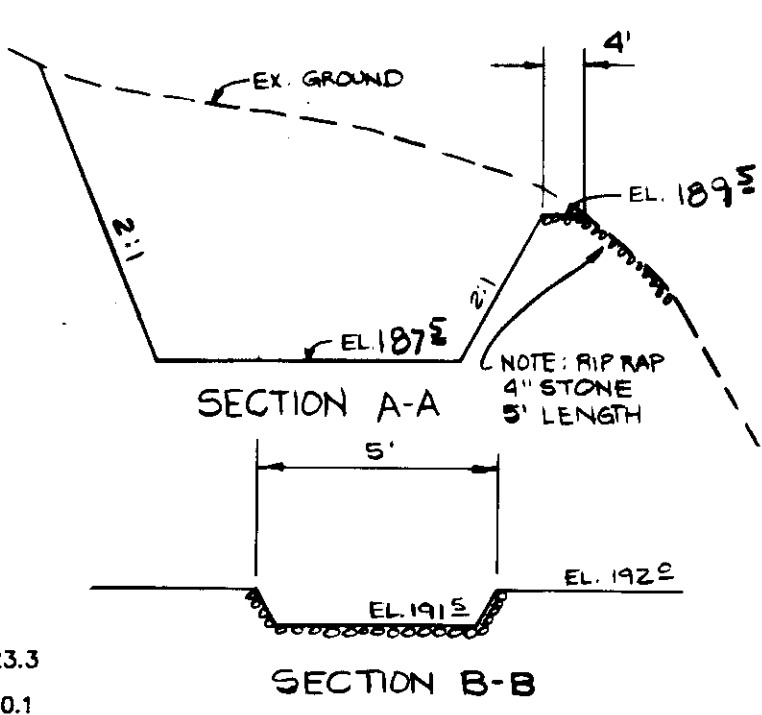
- PROP. PVMT. (P-1)
- PROP. PVMT. (P-2)
- EX. TREE LINE
- TREE SAVED LINE
- EX. TOPO
- PROP. TOPO
- EX. PVMT.

* NOTE: A RAMP WILL BE PROVIDED TO THE FIRST FLOOR ELEVATION OF 200.34 OR A WAIVER WILL BE OBTAINED.

NOTE: THE EXISTING GENER HOUSE CONNECTION AND WATER HOUSE CONNECTION FOR EXISTING HOUSE ARE APPROX. AND MUST BE FIELD LOCATED BY CONTRACTOR.

GENERAL NOTES CONT.

16. PROP. 3/4" METER SHALL BE AT THE PROPERTY LINE WITHIN THE PUBLIC ROAD RIGHT-OF-WAY.



CROSS SECTIONS WATER QUALITY DEVICE
NTS
Plan
SCALE: 1" = 30'

SOILS TYPE

NOTE: THERE IS ONLY ONE SOILS TYPE FOR THE ENTIRE PROPERTY.

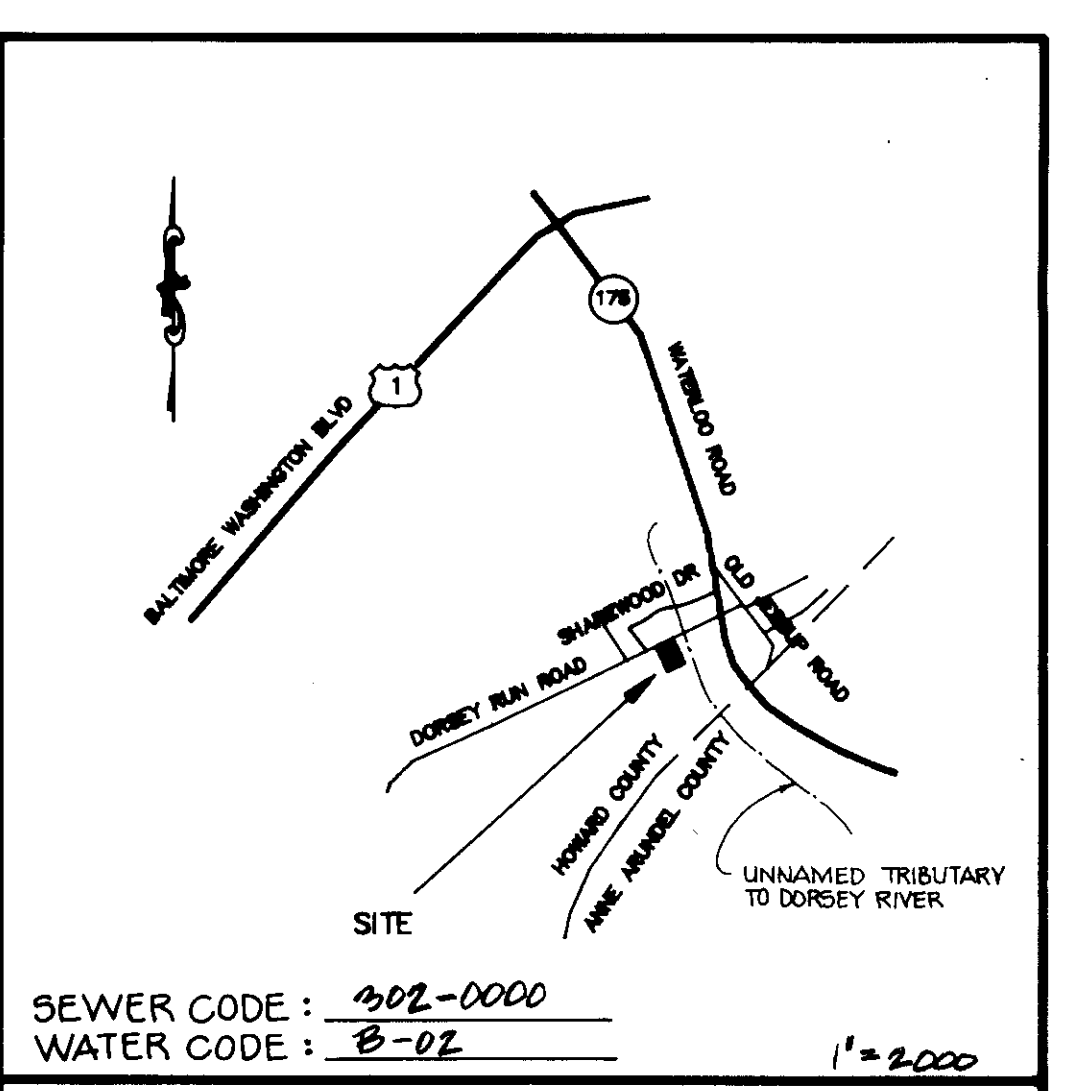
SIC: SASSAFRAS LOAM, 5% - 10% SLOPES

LEGEND

- (A) EXISTING HOUSE - TO BE CONVERTED TO REPAIR FACILITY OFFICE FOR TWO EMPLOYEES
- (B) PROPOSED NEW BUILDING

ADDRESS CHART

PARCEL NUMBER	ADDRESS
478	7901 DORSEY RUN ROAD



VICINITY MAP
GENERAL NOTES

- All construction shall be in accordance with the latest standards and specifications of Howard County plus MSHA standards and specifications if applicable.
- The contractor shall notify the Department of Public Works/Bureau of Construction Inspection at 301-792-7272 at least (5) working days prior to the start of work.
- The contractor shall notify "Miss Utility" at 1-800-257-7777 at least 48 hours prior to any excavation work.
- Total area of site is 0.927 acres or 40,372 S.F.
- Traffic control devices, markings, and signing shall be in accordance with the latest edition of the manual on Uniform Traffic Control Devices (MUTCD). All street and regulatory signs shall be in place prior to the placement of any asphalt.
- All plan dimensions are to the face of curb unless otherwise noted.
- Topo and boundary survey performed by Harris Sarge Metz Inc. March, 1991. The contour interval was 1 foot existing and 12 foot proposed. The horizontal and vertical control are based upon Howard County Geodetic Control stations 2144022 and 204407.
- Water and sewer are public contract No. 612-8.
- THE FEE-IN-LIEU OF SWM WAS APPROVED MARCH 17, 1992.
- A wetland investigation was performed on June 28, 1991 and no wetlands were found on the site.
- Existing utilities were located when possible during the field run topo process. Otherwise County As-Builts were used.
- The proposed garage will have a wash room.
- Repair facility to have sloping floors to an interior catch basin connected to a premanufactured oil interceptor connecting to a sanitary sewer line. A separate waste oil tank will be provided.
- The proposed facility will be used for car repair and storage. The existing house will be used as office and warehouse space.
- Total square footage for the garage = 6000 S.F.
Square footage devoted to repair = 3840 S.F.
Square footage devoted to car storage = 2160 S.F.

PREPARED BY:
AMERICAN ENGINEERING, INC.
CIVIL ENGINEERING CONSULTANTS
AND LAND PLANNER

671-A MAIN STREET LAUREL, MD. 20707
BALT. (301) 880-3038
WASH. (301) 963-1221

OWNER / DEVELOPER

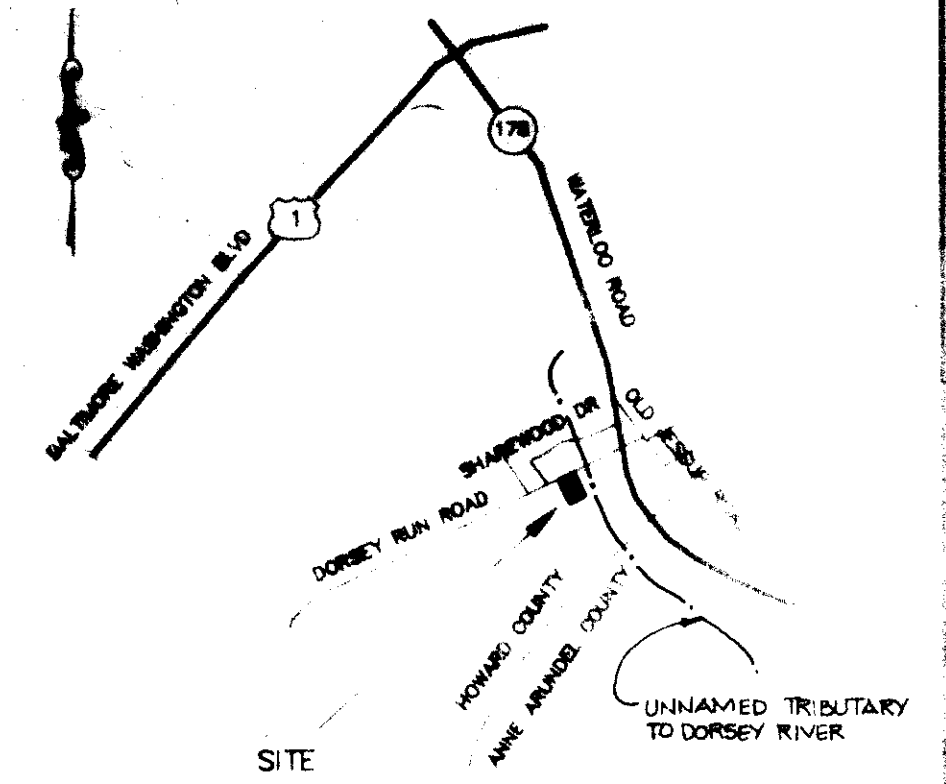
Mr. Zygmunt Siwek
German Auto Service
7909 Dorsey Road
Jessup, MD 20794

SUBDIVISION NAME	SIWEK PROPERTY	SECT./AREA	1/1	LOT/PARCEL#	478
PLAT# OR L/F	242 / 538	BLOCK#	M-2	TAX/ZONE MAP	43
ELEC. DIST.	#0	CENSUS TR.	6080.1		
WATER CODE	B-02	SEWER CODE	302-0000		

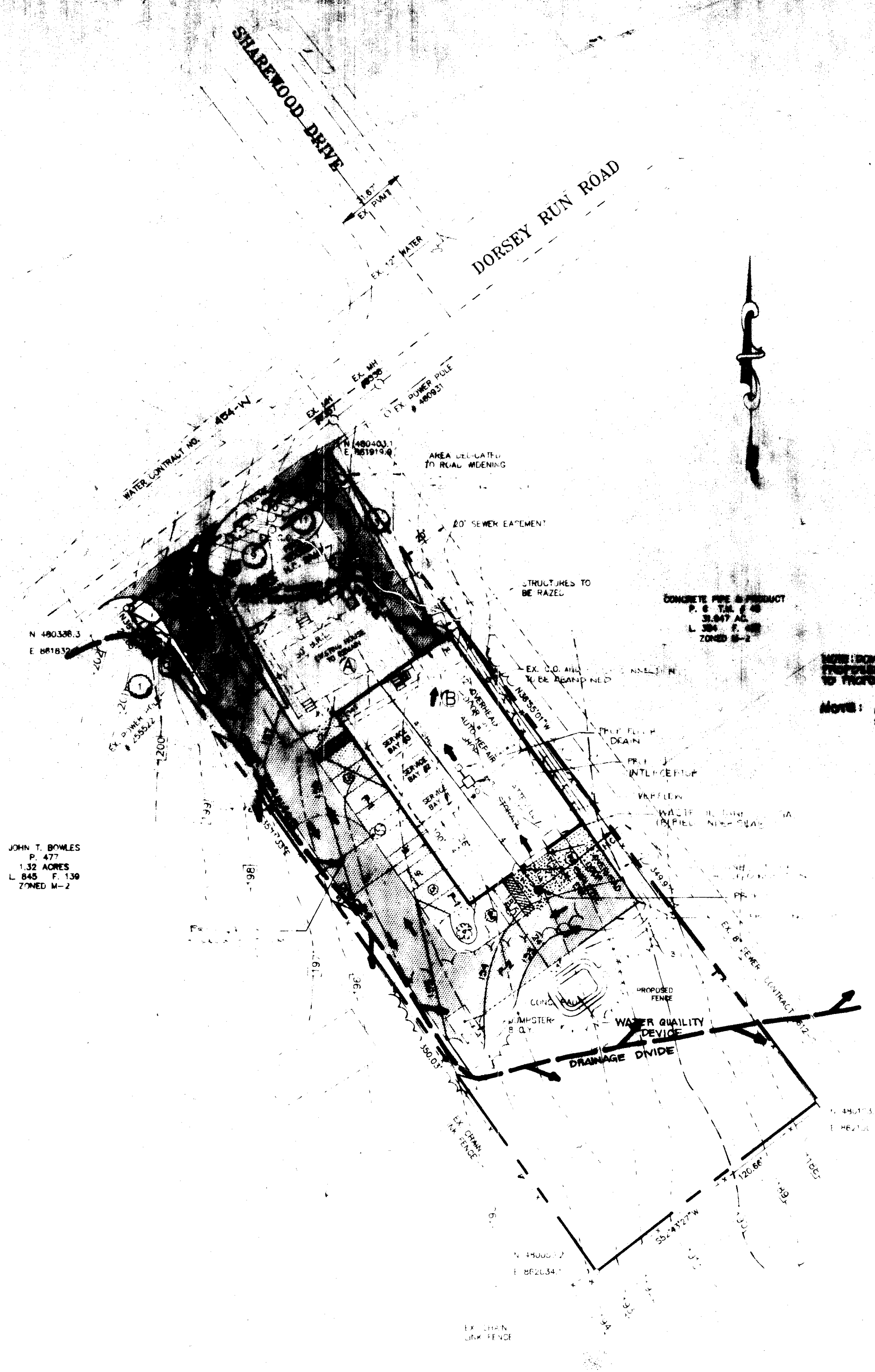
GERMAN AUTO SERVICE

SITE DEVELOPMENT PLAN
SDP-92-23

DRAWN BY:	W.D.F.	DATE:	9-15-91
CHECKED BY:	D.C.W.	FILE:	SIWEK
JOB NO.:	91112	SHEET	1 OF 4



VICINITY MAP
SCALE: 1" = 2000'



NOTE: DOWNSPUTS FROM EX. HOUSE & TRAPPED SEWERS WILL BE DIRECTED TO THROUGH WATER QUALITY DEVICE.
NOTE: A FEE IN LIEU WILL BE PAID. SWIM IS NOT PROVIDED

JOHN T. BOWLES
P. 477
1.32 ACRES
L. 845 F. 130
77MED M-2

C = 0.72
I = 6.60
A = 0.72 AC

NOTE: SEE COMPUTATION PACKAGE SUBMITTED 2-24-92.

Plan
SCALE: 1" = 30'



PREPARED BY
AMERICAN ENGINEERING, INC.
CIVIL ENGINEERING CONSULTANTS
AND LAND SURVEYORS

871-A MAIN STREET LAUREL, MD 20707 BALTO. LIGHTS BLDG. WASH. DC 20004

OWNER / DEVELOPER
Mr. Zygmunt Siewek
German Auto Service
913 Dorsey Run Rd
Jessup, MD 20794

SUBDIVISION NAME: SIEWEK PROPERTY SECT: 4 TRACED: 1

PLAT# OR L/P: 247 / 538 BLOCK#: M-2 ZONE: 4 TAX ZONE: MAP 4 JURISDICTION: 4B

WATER CODE: SEWER CODE:

GERMAN AUTO SERVICE

DRAINAGE AREA MAP
SDF 19-23

DRAWN BY: W.D.F. DATE: FILE: SHEET: 3 OF 4

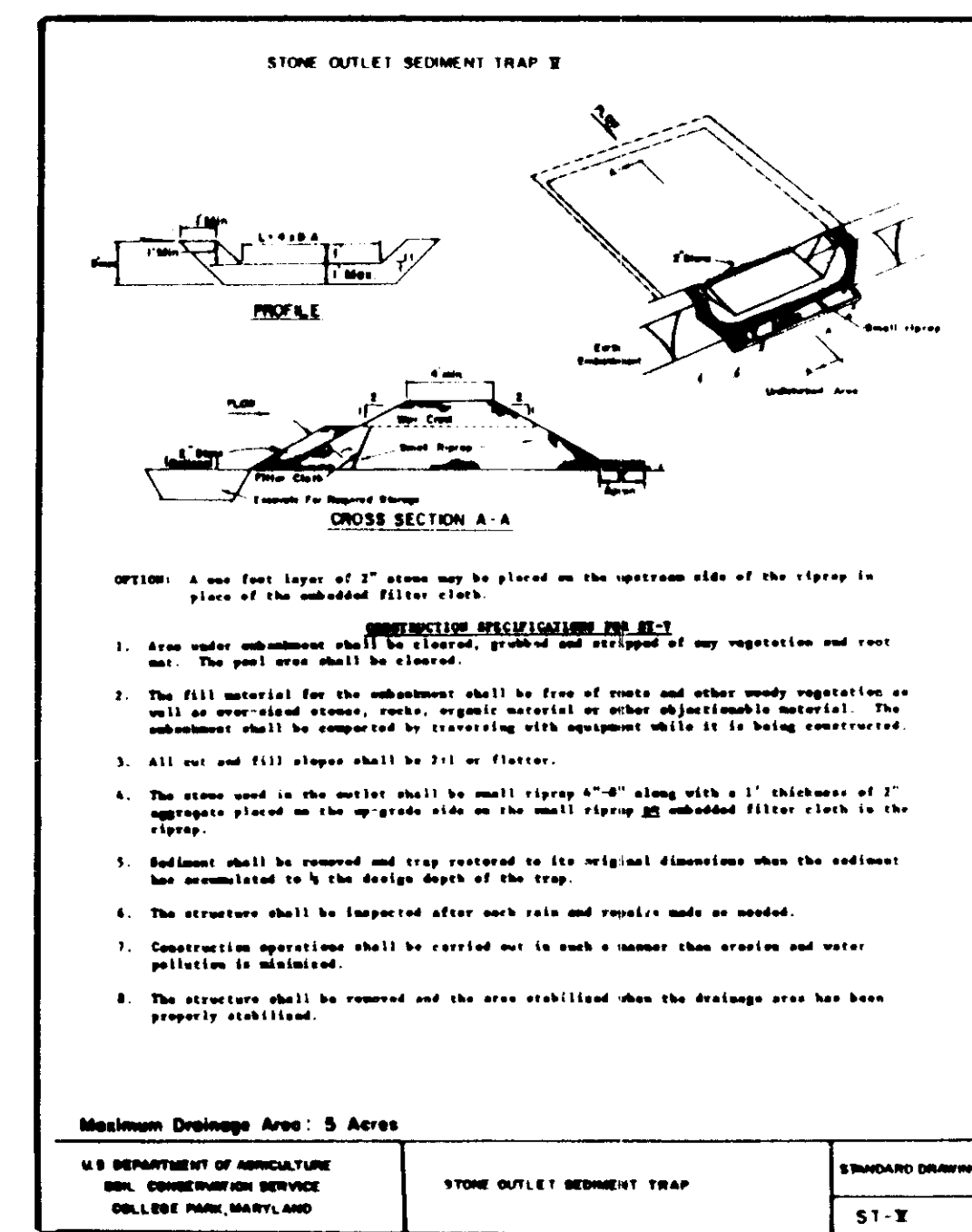
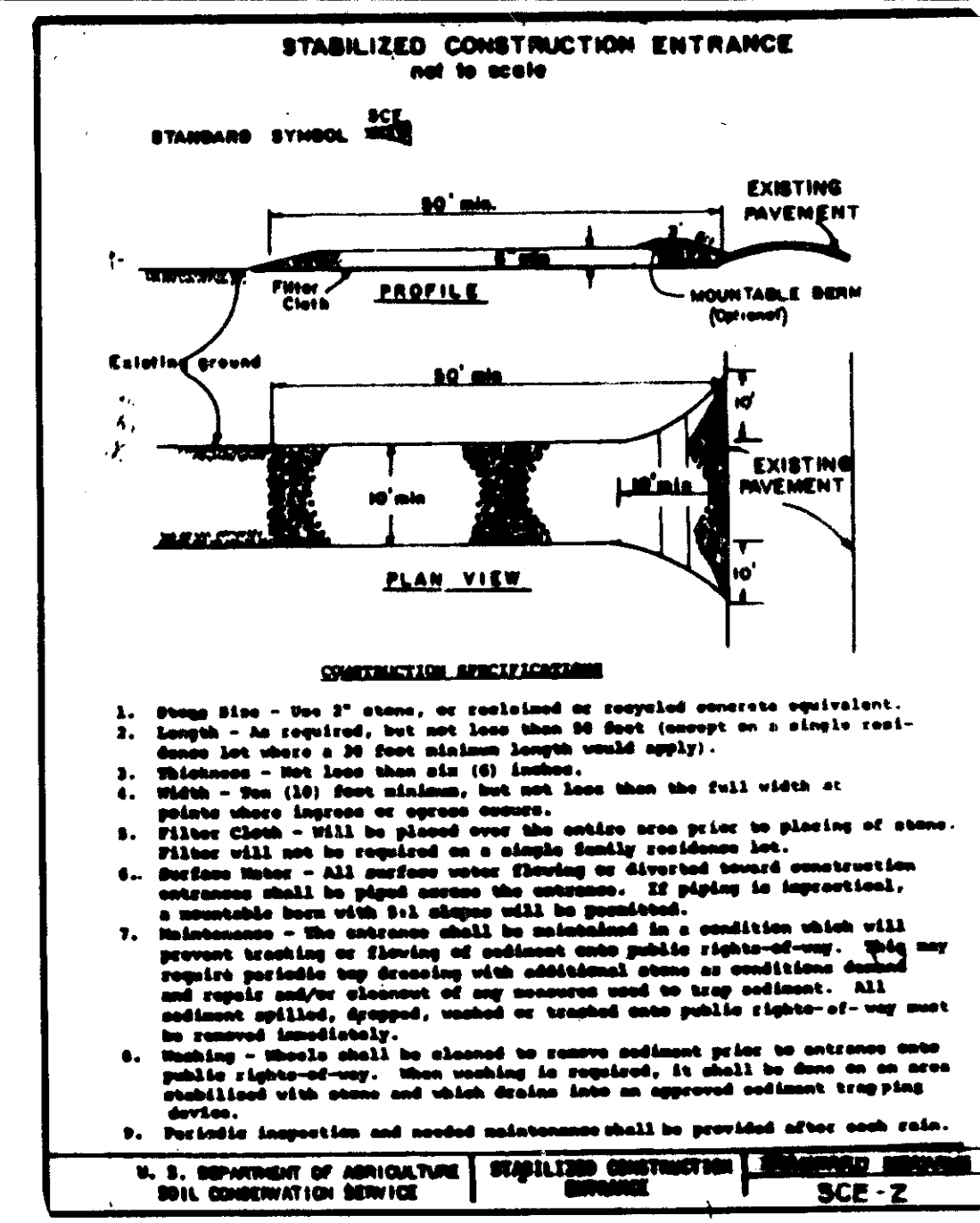
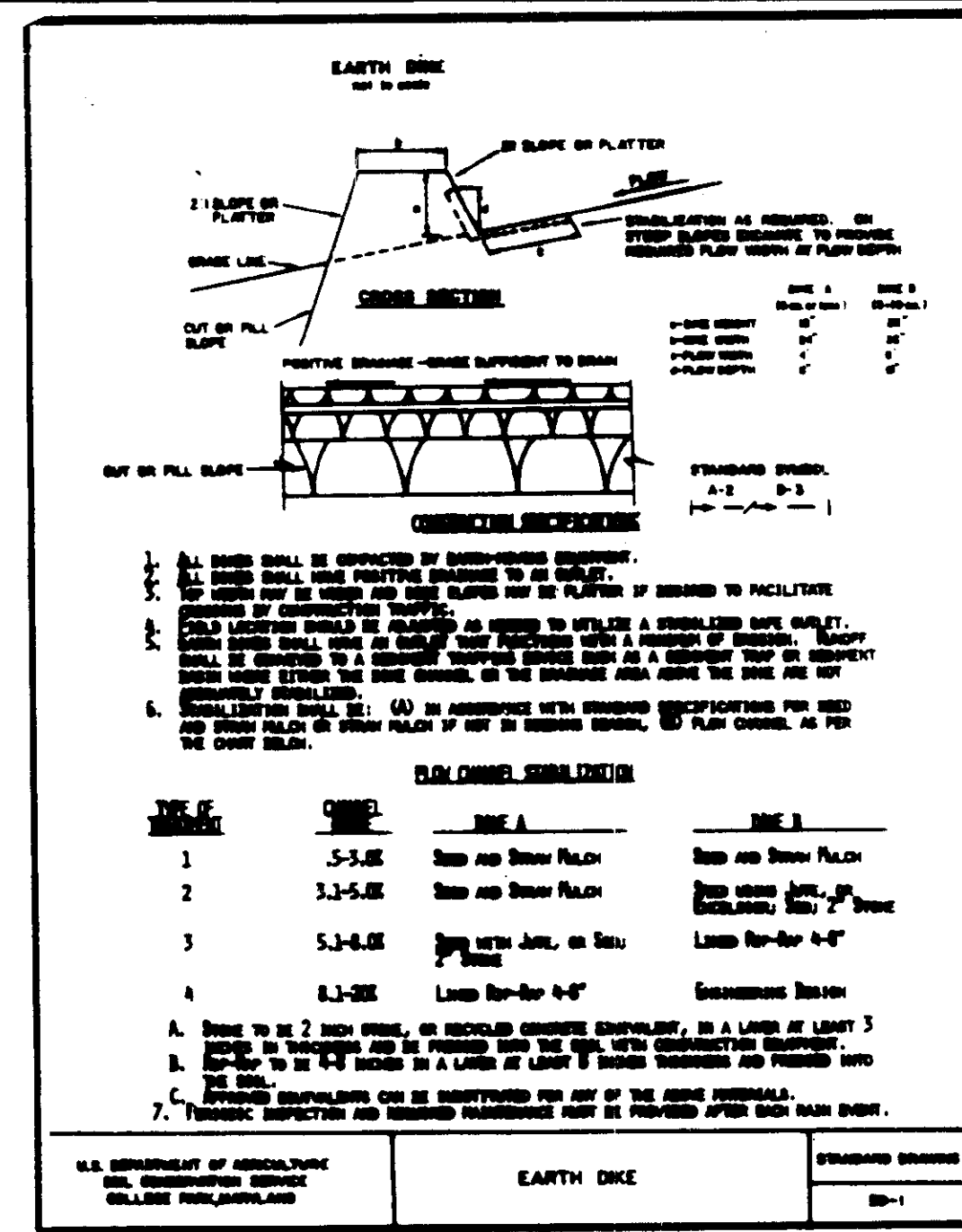
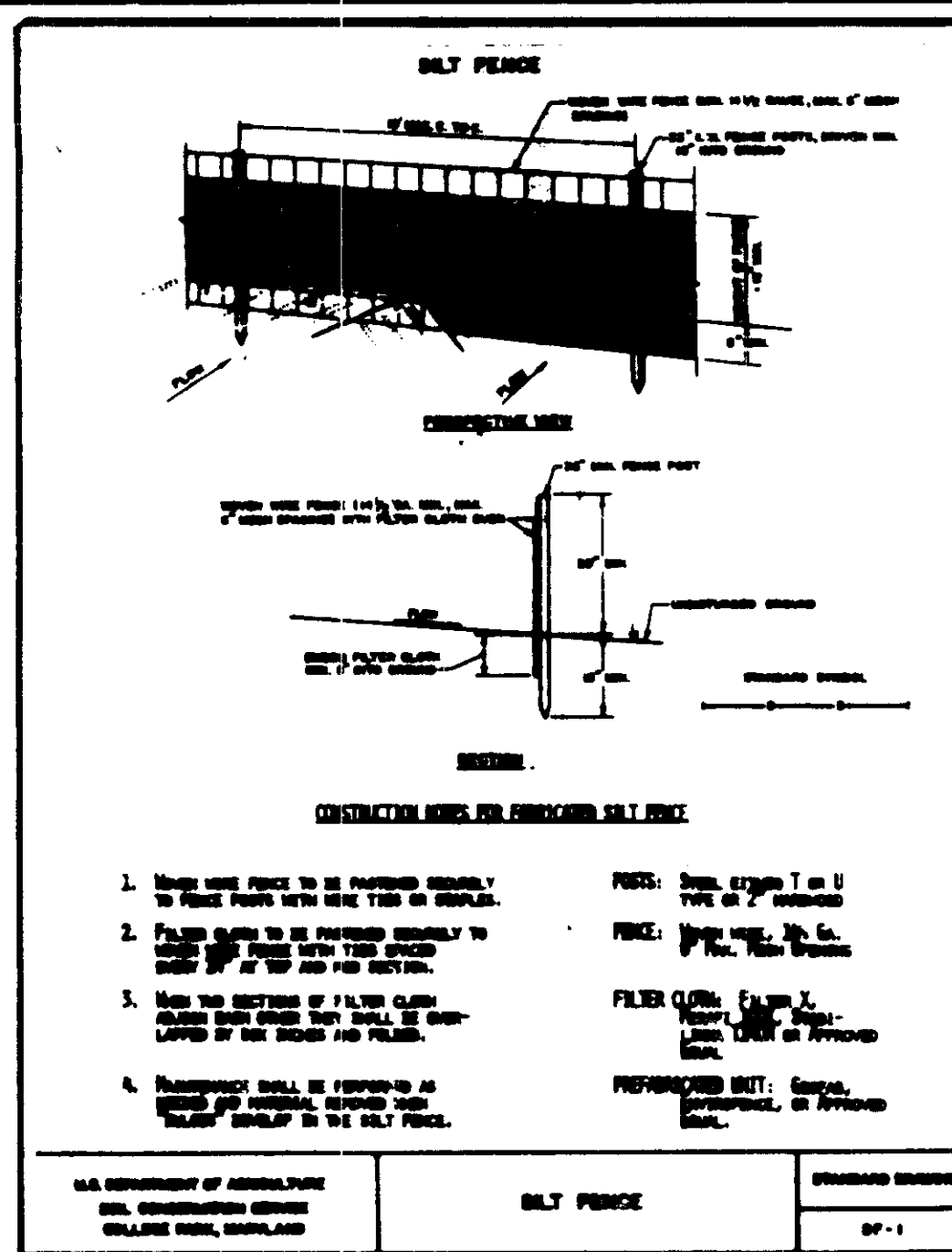
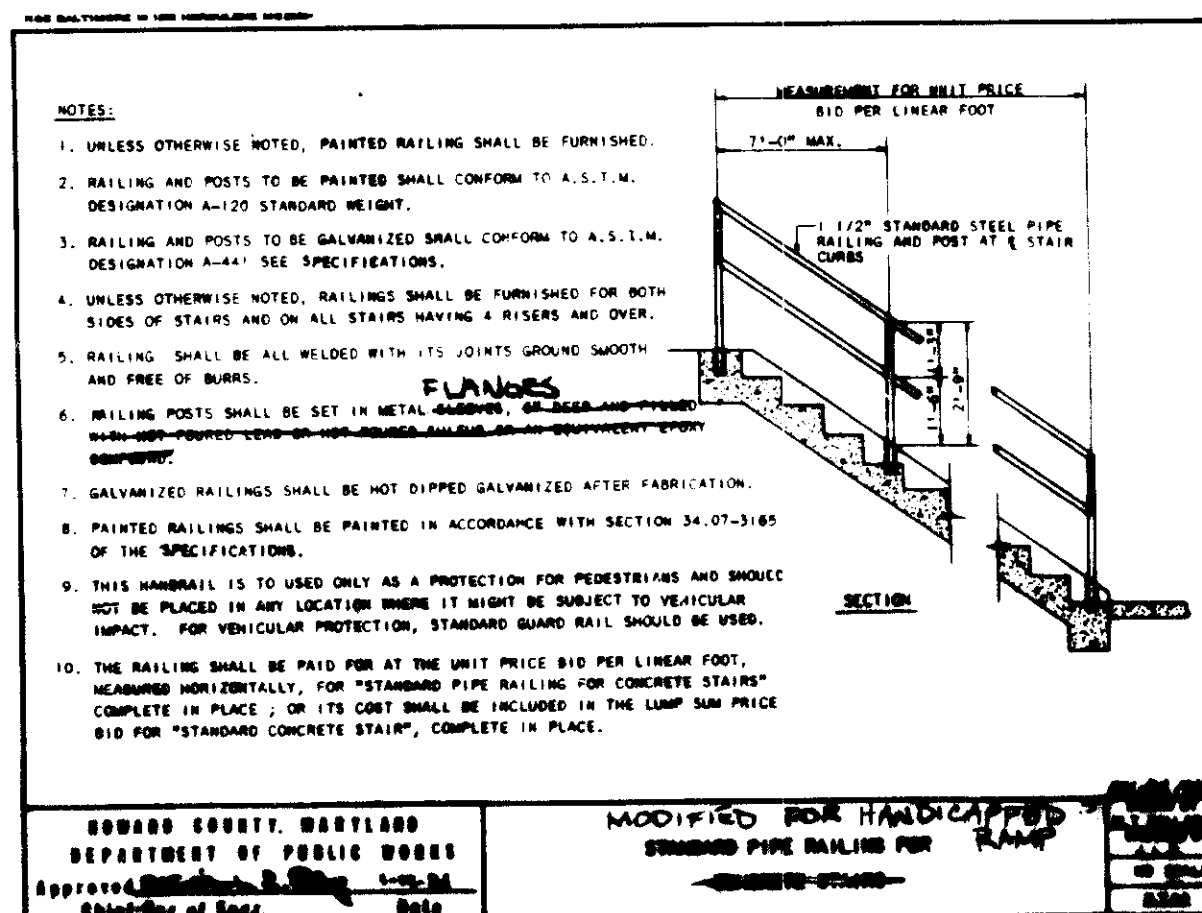
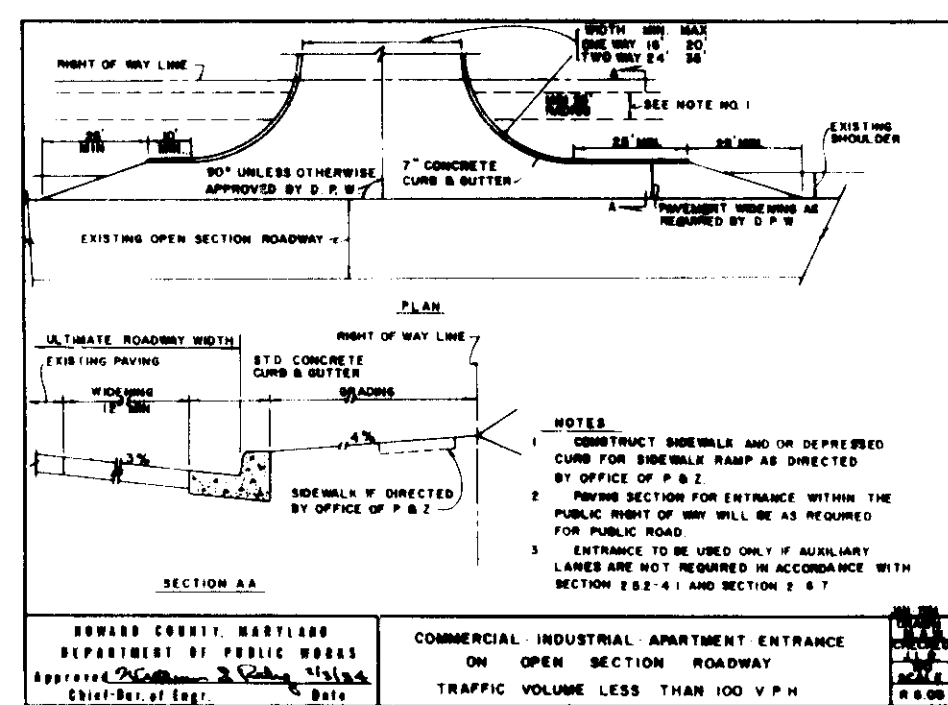
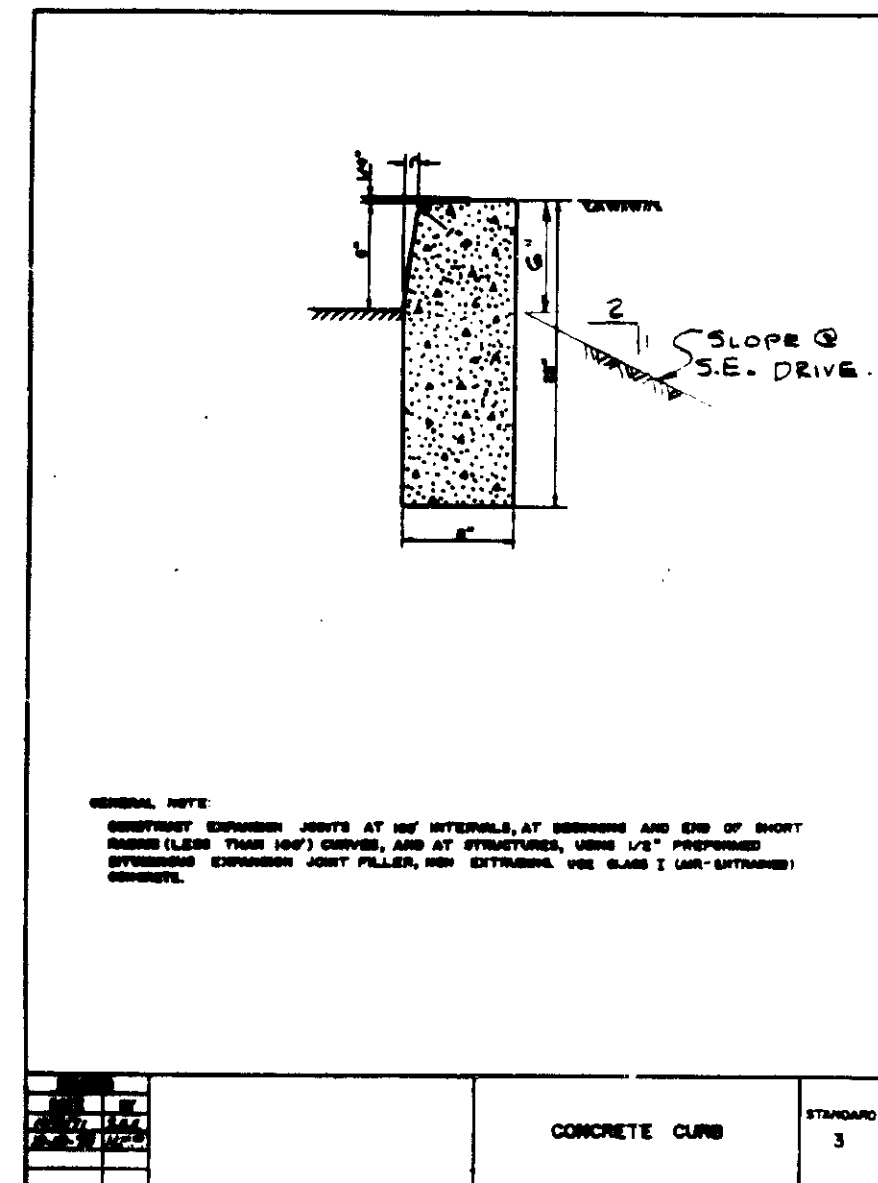
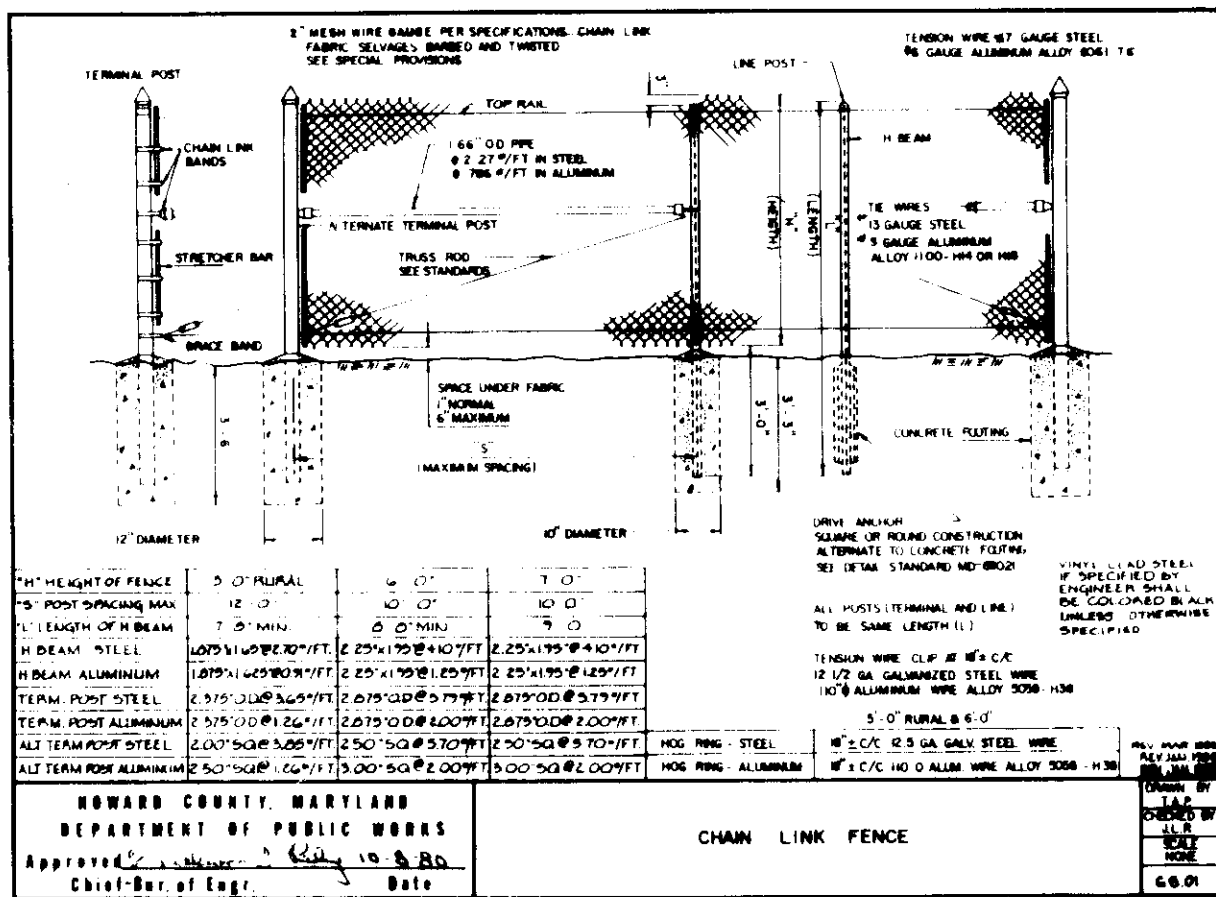
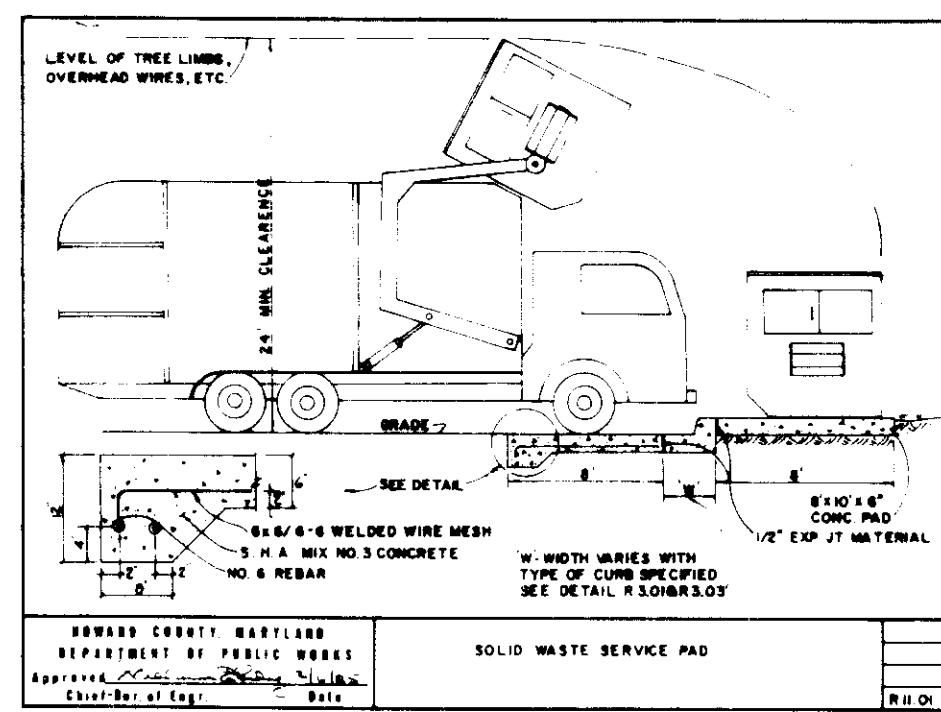
CHECKED BY: D.C.W. DATE: FILE: SHEET: 3 OF 4

JOB NO.: 9112

4/22/92
4/27/92
4/21/92
4-15-92

OFF-SITE DRAINAGE AREA MAP
SCALE: 1" = 200'

SECTION NUMBER	ROAD AND STREET CLASSIFICATION	PAVING MATERIALS	GRAVEL AND BASE ALTERNATES
P-1	APARTMENT AND COMMERCIAL INDUSTRIAL ZONES WITH HEAVY TRAFFIC	1. 1 1/2" BIT. CONC. SURFACE 2. 1 1/2" BIT. CONC. BASE 3. 1 1/2" BIT. CONC. CURB	1. 1 1/2" BIT. CONC. SURFACE 2. 1 1/2" BIT. CONC. BASE 3. 1 1/2" BIT. CONC. CURB
P-2	RESIDENTIAL ZONES LOCAL AND COLLECTOR STREETS	1. 1 1/2" BIT. CONC. SURFACE 2. 1 1/2" BIT. CONC. BASE 3. 1 1/2" BIT. CONC. CURB	1. 1 1/2" BIT. CONC. SURFACE 2. 1 1/2" BIT. CONC. BASE 3. 1 1/2" BIT. CONC. CURB
P-3	RESIDENTIAL ZONES LOCAL AND COLLECTOR STREETS	1. 1 1/2" BIT. CONC. SURFACE 2. 1 1/2" BIT. CONC. BASE 3. 1 1/2" BIT. CONC. CURB	1. 1 1/2" BIT. CONC. SURFACE 2. 1 1/2" BIT. CONC. BASE 3. 1 1/2" BIT. CONC. CURB
P-4	COMMERCIAL INDUSTRIAL ZONES	1. 1 1/2" BIT. CONC. SURFACE 2. 1 1/2" BIT. CONC. BASE 3. 1 1/2" BIT. CONC. CURB	1. 1 1/2" BIT. CONC. SURFACE 2. 1 1/2" BIT. CONC. BASE 3. 1 1/2" BIT. CONC. CURB



HOWARD
 JOHN M. SIKELIS 4/1/92
 J. H. HIGGINS 4/1/92
 STATE OF MARYLAND
 DEPARTMENT OF AGRICULTURE
 DIVISION OF COMMUNITY PLANNING & ZONING

PREPARED BY:
AMERICAN ENGINEERING, INC.
 CIVIL ENGINEERING CONSULTANTS
 AND LAND PLANNER
 871-A MAIN STREET LAUREL, MD. 20707
 BALT. (301) 880-3038
 WASH. (301) 963-1221

OWNER / DEVELOPER
 Mr. Zygmunt Siwek
 German Auto Service
 7909 Dorsey Road
 Jessup, MD 20794

SUBDIVISION NAME	SIWEK PROPERTY	SECT./AREA	1/1	LOT/PARCEL	478
PLAT/ L/F	242 / 538	BLOCK/ ZONE	M-2	ELEC. DIST.	43
WATER CODE		SEWER CODE		CENSUS TR.	8080.1

GERMAN AUTO SERVICE

DETAIL SHEET
 SDP-92-23

DRAWN BY:	W.D.F.	DATE:	9-15-91
CHECKED BY:	D.C.W.	FILE:	SIWEK
SHEET NO.:	91112	SHEET	4 OF 4

APPROVED: FOR PUBLIC WATER AND PUBLIC SEWERAGE SYSTEMS.
 HOWARD COUNTY HEALTH DEPARTMENT
 Joyce M. [Signature] 4/23/92
 COUNTY HEALTH OFFICER

APPROVED: HOWARD COUNTY DEPARTMENT OF PLANNING & ZONING
 [Signature] 4/27/92
 DIRECTOR
 [Signature] 4/27/92
 CHIEF, DIVISION OF COMMUNITY PLANNING & ZONING

APPROVED: FOR PUBLIC WATER AND SEWERAGE STORM DRAINAGE SYSTEMS AND PUBLIC ROADS.
 HOWARD COUNTY DEPARTMENT OF PUBLIC WORKS
 [Signature] 4-15-92
 DIRECTOR
 [Signature] 4-15-92
 CHIEF BUREAU OF ENGINEERING

