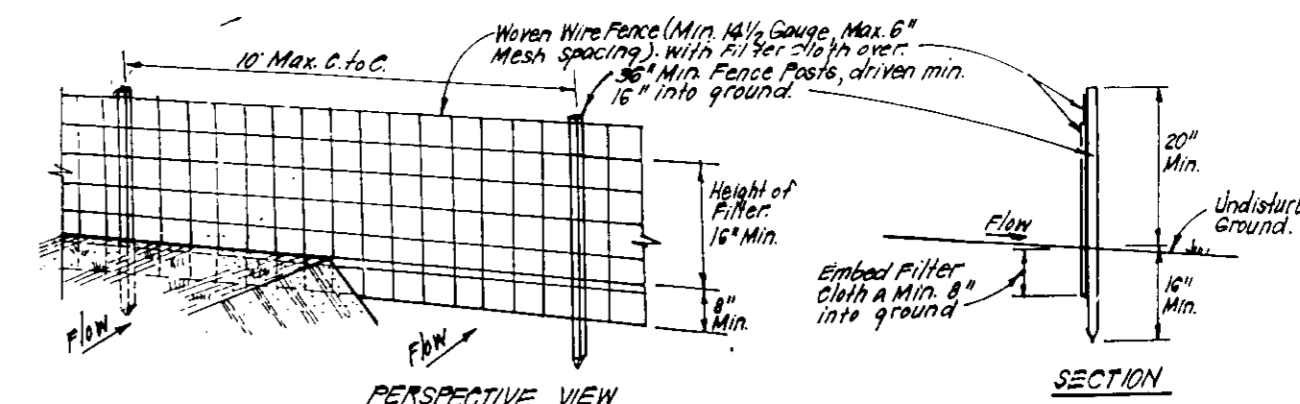


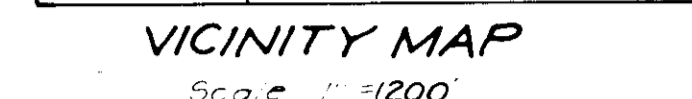
NOTE: STABILIZE SLOPE IMMEDIATELY WITH SEED & MULCH.

NOTE: FOR TRAP NO. 1 INFORMATION SEE SHEET 4 OF 4.



CONSTRUCTION SPECIFICATIONS:
 1. Weave wire fence to be fastened securely to fence posts with wire ties or staples.
 2. Filter cloth to be fastened securely to weave wire fence with ties spaced every 36" in top and mid sections.
 3. When 2 sections of filter cloth adjoin each other they shall be overlapped by 6" and "stapled".
 4. Maintenance shall be performed as needed and material removed when "bulges" develop in Silt Fence.

POST: 1" Steel, either Type II Type or 2" Hardwood
 FENCE: Weave Wire, 14 1/2 Gauge, 2" Max. Mesh Opening
 FILTER CLOTH: Filter, Miral's, 600, Stabilized, T100N or Approx. equal
 PREFABRICATED UNIT: Geotex, Envirofence, Geoprotect, equal.



VICINITY MAP
 Scale: 1" = 4200'

LEGEND

- Existing Drainage Divide
- Proposed Drainage Divide
- Contour Interval
- Existing Contour
- Proposed Contour
- Spot Elevation
- Direction of Drainage
- Walk out Basement
- Silt Fence
- Earth Dike
- Stabilized Construction Entrance

DEVELOPER'S/BUILDER'S CERTIFICATE

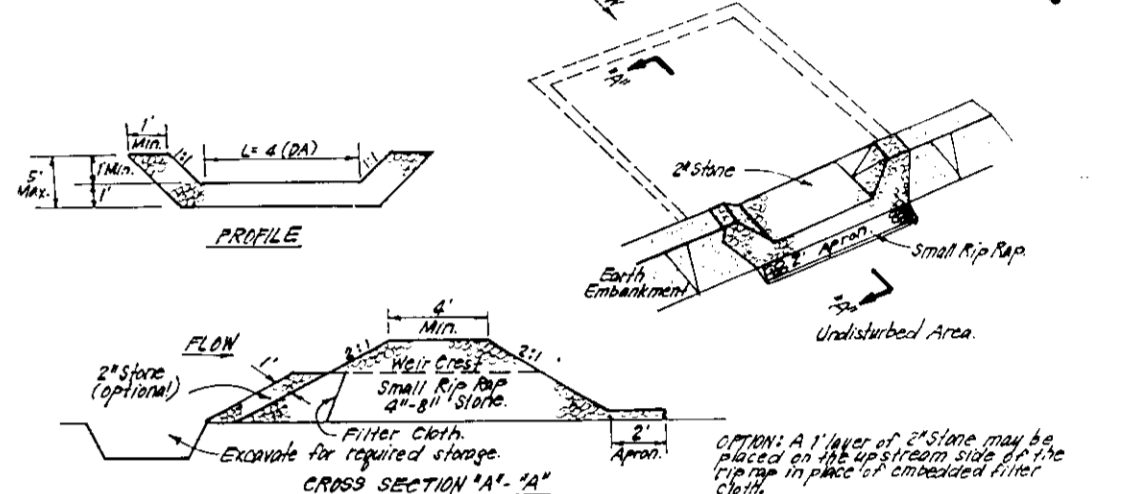
"I/We certify that all development and construction will be done according to this plan of development and plan for erosion and sediment control and that all responsible personnel involved in the construction project will have a Certificate of Attendance at a Department of the Environment Approved Training Program for the Control of Sediment and Erosion before beginning the project. I also authorize periodic on-site inspection by the Howard Soil Conservation District or their authorized agents, as are deemed necessary."

Robert Cooper
 Signature Date 3-7-91

Reviewed for HOWARD COUNTY S.C.D. Name and meets Technical Requirements
 Signature Date 3/11/91
 U.S. Soil Conservation Service

THIS DEVELOPMENT PLAN IS APPROVED FOR SOIL EROSION AND SEDIMENT CONTROL BY THE HOWARD SOIL CONSERVATION DISTRICT.

John L. Robertson 3/11/91
 Approved



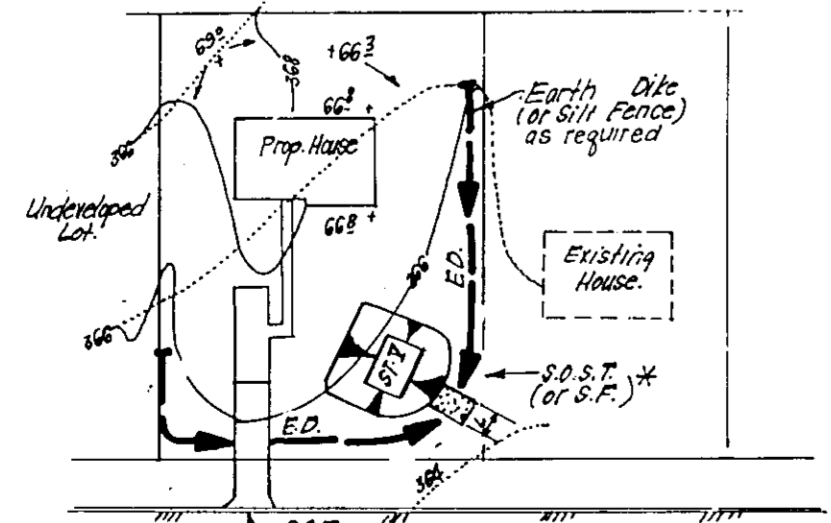
CONSTRUCTION SPECIFICATIONS:
 1. Any under embankment shall be cleared, grubbed and stripped of any vegetation and root mat. The 12" stone shall be placed on a 4" sand and gravel bedding as well as specified.
 2. The 12" stone shall be placed on a 4" sand and gravel bedding as well as specified.
 3. The 12" stone shall be placed on a 4" sand and gravel bedding as well as specified.
 4. The 12" stone shall be placed on a 4" sand and gravel bedding as well as specified.
 5. The 12" stone shall be placed on a 4" sand and gravel bedding as well as specified.
 6. The 12" stone shall be placed on a 4" sand and gravel bedding as well as specified.
 7. The 12" stone shall be placed on a 4" sand and gravel bedding as well as specified.
 8. The 12" stone shall be placed on a 4" sand and gravel bedding as well as specified.
 9. The 12" stone shall be placed on a 4" sand and gravel bedding as well as specified.
 10. The 12" stone shall be placed on a 4" sand and gravel bedding as well as specified.

ENGINEER'S CERTIFICATE

I hereby certify that this plan for Erosion and Sediment Control represents a practical and workable plan based on my personal knowledge of the site conditions and that it was prepared in accordance with the requirements of the Howard Soil Conservation District.

G. Nelson Clark 2-26-91
 Date

APPROVED: FOR PUBLIC WATER AND PUBLIC SEWERAGE SYSTEMS, HOWARD COUNTY HEALTH DEPARTMENT: 3/24/91
 COUNTY HEALTH OFFICER DATE
 APPROVED: HOWARD COUNTY DEPT. OF PLANNING & ZONING: 3/27/91
 DIRECTOR DATE
 CHIEF DIVISION OF COMMUNITY PLANNING AND LAND DEVELOPMENT: 3/27/91
 APPROVED: FOR PUBLIC WATER AND PUBLIC SEWERAGE, STORM DRAINAGE SYSTEMS AND PUBLIC ROADS, HOWARD COUNTY DEPARTMENT OF PUBLIC WORKS: 3/22/91
 DIRECTOR DATE
 CHIEF BUREAU OF ENGINEERING: 3-21-91
 DATE



* NOTE: Single lot detail can not be utilized if any two lots sharing common property lines are to be disturbed at the same time or on any lots sharing a sediment trap.
 A 4" stone outlet sediment trap must be as given or greater.

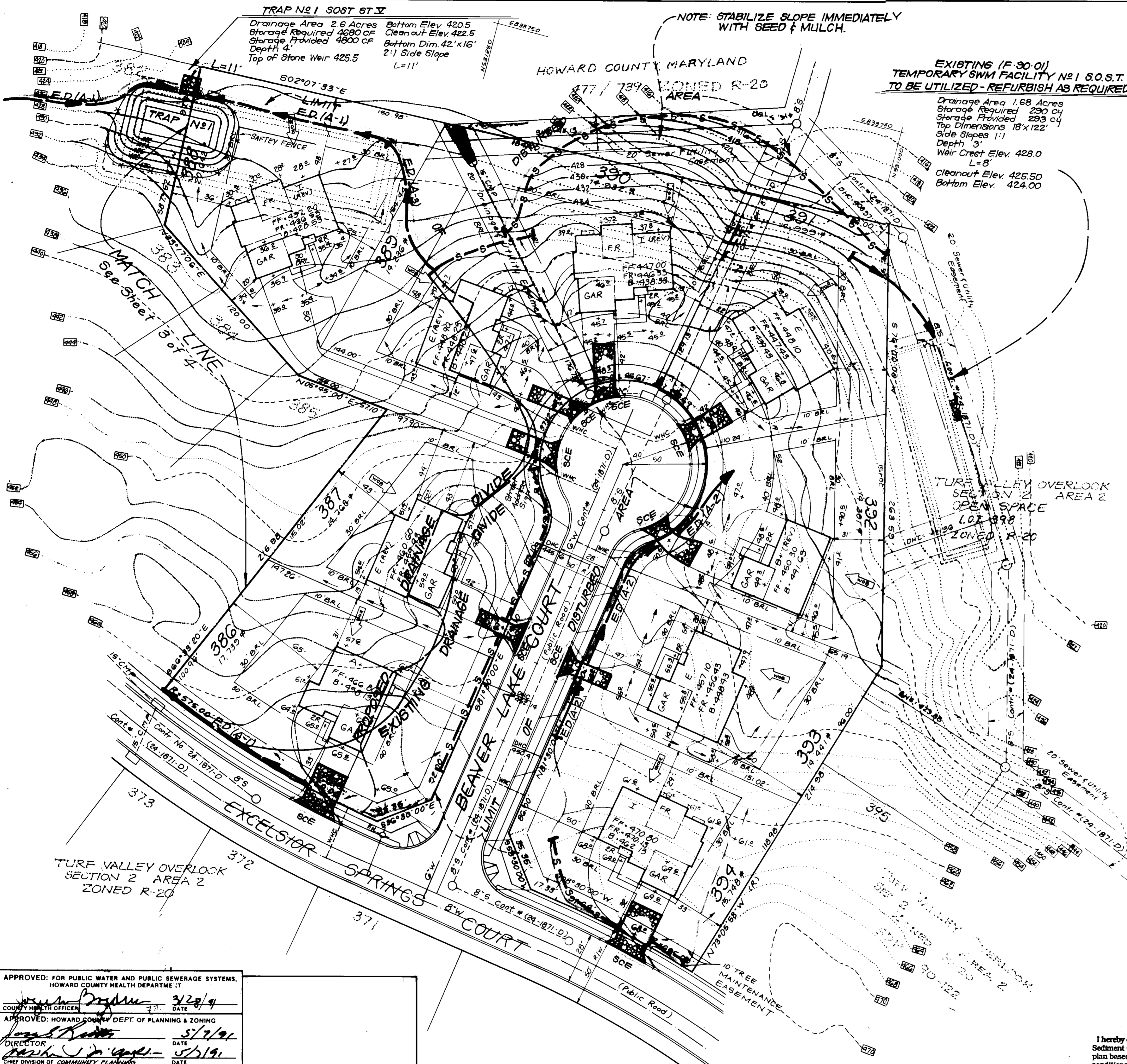
CLARK • FINEFROCK & SACKETT, INC.
 ENGINEERS • PLANNERS • SURVEYORS
 7135 MINSTREL WAY • COLUMBIA, MD. 21045 • (301) 381-7500 - BALTO. • (301) 621-8100 - WASH.

DESIGNED: KIWM
 DRAWN: BAL
 CHECKED: KIWM
 DATE: March 1991

SEDIMENT & EROSION CONTROL PLAN
 LOTS 372 thru 394
TURF VALLEY OVERLOOK
 SECTION 2 AREA 2
 2ND ELECTION DISTRICT
 HOWARD COUNTY MARYLAND

FOR: R.C. GOODIER BUILDERS, INC.
 11207 McFee Way
 Ellicott City, Md. 21043

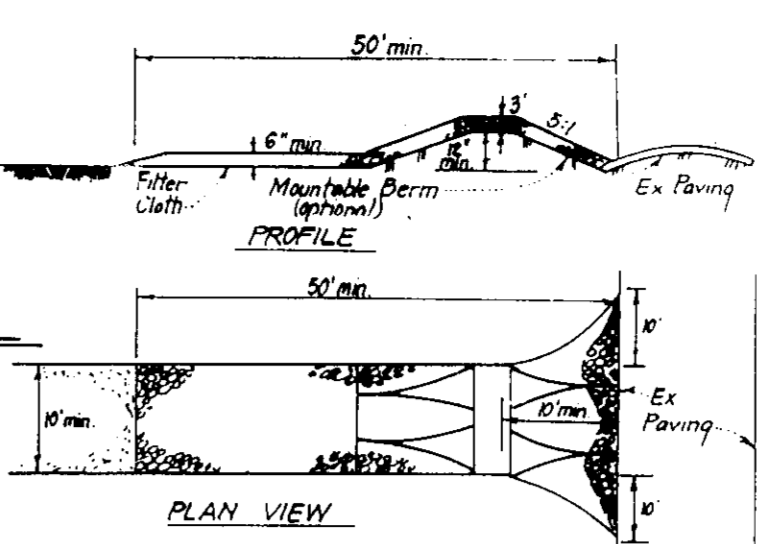
SCALE: 1" = 30'
 DRAWING: 3 OF 4
 JOB NO.: 89-126
 FILE NO.: 89-126 SE



NOTE: STABILIZE SLOPE IMMEDIATELY WITH SEED & MULCH.

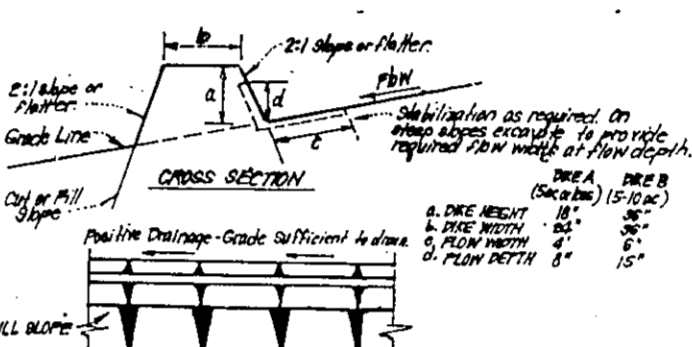
EXISTING (F-30-01) TEMPORARY SWM FACILITY NO 1 S.O.S.T. TO BE UTILIZED - REFURBISH AS REQUIRED

Drainage Area 1.68 Acres
Storage Required 230 cu
Storage Provided 293 cu
Top Dimensions 18'x122'
Slope Slopes 1:1
Depth 3'
Weir Crest Elev. 428.0
L=8'
Cleanout Elev. 425.50
Bottom Elev. 424.00



- CONSTRUCTION SPECIFICATIONS:
- Stone size - Use 2" stone, or equivalent or recycled concrete equivalent.
 - Lengths - As required, but not less than 50 feet (exception on single residence lot where a 30 foot minimum length would apply).
 - Thickness - Not less than six (6) inches.
 - Width - Ten (10) foot minimum, but not less than the full width of points where ingress or egress occurs.
 - Filter Cloth - Will be placed over the entire area prior to placing of stone. Filter will not be required on a single family residence lot.
 - Surface Water - All surface water flowing or diverted toward construction entrances shall be piped across the entrance. If piping is impractical, a minimum 6" curb with 5:1 slopes will be permitted.
 - Maintenance - The entrance shall be maintained in a condition which will prevent tracking or blowing of sediment into public rights-of-way. This may require periodic top dressing with additional stone as conditions demand and repair and/or cleanup of any materials used to trap sediment. All sediment applied, dropped, washed for tracked onto public rights-of-way, must be removed immediately.
 - Working - Workers shall be obligated to remove sediment prior to entrance into public rights-of-way. When working is required, it shall be done on an area stabilized with stone and which drains into an approved sediment trapping device.
 - Periodic inspection and needed maintenance shall be provided after each rain.

STABILIZED CONSTRUCTION ENTRANCE (SCE)



DEVELOPER'S/BUILDER'S CERTIFICATE

"I/We certify that all development and construction will be done according to this plan of development and plan for erosion and sediment control and that all responsible personnel involved in the construction project will have a Program for the Control of Erosion and Sediment before beginning the project. I also authorize periodic on-site inspection by the Howard Soil Conservation District or their authorized agents, as are deemed necessary."

Robert Cookin
Signature

3-7-91
Date

TYPE OF DISTURBANCE	CHANGELINE STABILIZATION	DATE
1. 2-15-91	2. 2-15-91	3. 2-15-91
4. 2-15-91	5. 2-15-91	6. 2-15-91
7. 2-15-91	8. 2-15-91	9. 2-15-91
10. 2-15-91	11. 2-15-91	12. 2-15-91
13. 2-15-91	14. 2-15-91	15. 2-15-91
16. 2-15-91	17. 2-15-91	18. 2-15-91
19. 2-15-91	20. 2-15-91	21. 2-15-91
22. 2-15-91	23. 2-15-91	24. 2-15-91
25. 2-15-91	26. 2-15-91	27. 2-15-91
28. 2-15-91	29. 2-15-91	30. 2-15-91
31. 2-15-91	32. 2-15-91	33. 2-15-91
34. 2-15-91	35. 2-15-91	36. 2-15-91
37. 2-15-91	38. 2-15-91	39. 2-15-91
40. 2-15-91	41. 2-15-91	42. 2-15-91
43. 2-15-91	44. 2-15-91	45. 2-15-91
46. 2-15-91	47. 2-15-91	48. 2-15-91
49. 2-15-91	50. 2-15-91	51. 2-15-91
52. 2-15-91	53. 2-15-91	54. 2-15-91
55. 2-15-91	56. 2-15-91	57. 2-15-91
58. 2-15-91	59. 2-15-91	60. 2-15-91
61. 2-15-91	62. 2-15-91	63. 2-15-91
64. 2-15-91	65. 2-15-91	66. 2-15-91
67. 2-15-91	68. 2-15-91	69. 2-15-91
70. 2-15-91	71. 2-15-91	72. 2-15-91
73. 2-15-91	74. 2-15-91	75. 2-15-91
76. 2-15-91	77. 2-15-91	78. 2-15-91
79. 2-15-91	80. 2-15-91	81. 2-15-91
82. 2-15-91	83. 2-15-91	84. 2-15-91
85. 2-15-91	86. 2-15-91	87. 2-15-91
88. 2-15-91	89. 2-15-91	90. 2-15-91
91. 2-15-91	92. 2-15-91	93. 2-15-91
94. 2-15-91	95. 2-15-91	96. 2-15-91
97. 2-15-91	98. 2-15-91	99. 2-15-91
100. 2-15-91	101. 2-15-91	102. 2-15-91
103. 2-15-91	104. 2-15-91	105. 2-15-91
106. 2-15-91	107. 2-15-91	108. 2-15-91
109. 2-15-91	110. 2-15-91	111. 2-15-91
112. 2-15-91	113. 2-15-91	114. 2-15-91
115. 2-15-91	116. 2-15-91	117. 2-15-91
118. 2-15-91	119. 2-15-91	120. 2-15-91
121. 2-15-91	122. 2-15-91	123. 2-15-91
124. 2-15-91	125. 2-15-91	126. 2-15-91
127. 2-15-91	128. 2-15-91	129. 2-15-91
130. 2-15-91	131. 2-15-91	132. 2-15-91
133. 2-15-91	134. 2-15-91	135. 2-15-91
136. 2-15-91	137. 2-15-91	138. 2-15-91
139. 2-15-91	140. 2-15-91	141. 2-15-91
142. 2-15-91	143. 2-15-91	144. 2-15-91
145. 2-15-91	146. 2-15-91	147. 2-15-91
148. 2-15-91	149. 2-15-91	150. 2-15-91
151. 2-15-91	152. 2-15-91	153. 2-15-91
154. 2-15-91	155. 2-15-91	156. 2-15-91
157. 2-15-91	158. 2-15-91	159. 2-15-91
160. 2-15-91	161. 2-15-91	162. 2-15-91
163. 2-15-91	164. 2-15-91	165. 2-15-91
166. 2-15-91	167. 2-15-91	168. 2-15-91
169. 2-15-91	170. 2-15-91	171. 2-15-91
172. 2-15-91	173. 2-15-91	174. 2-15-91
175. 2-15-91	176. 2-15-91	177. 2-15-91
178. 2-15-91	179. 2-15-91	180. 2-15-91
181. 2-15-91	182. 2-15-91	183. 2-15-91
184. 2-15-91	185. 2-15-91	186. 2-15-91
187. 2-15-91	188. 2-15-91	189. 2-15-91
190. 2-15-91	191. 2-15-91	192. 2-15-91
193. 2-15-91	194. 2-15-91	195. 2-15-91
196. 2-15-91	197. 2-15-91	198. 2-15-91
199. 2-15-91	200. 2-15-91	201. 2-15-91
202. 2-15-91	203. 2-15-91	204. 2-15-91
205. 2-15-91	206. 2-15-91	207. 2-15-91
208. 2-15-91	209. 2-15-91	210. 2-15-91
211. 2-15-91	212. 2-15-91	213. 2-15-91
214. 2-15-91	215. 2-15-91	216. 2-15-91
217. 2-15-91	218. 2-15-91	219. 2-15-91
220. 2-15-91	221. 2-15-91	222. 2-15-91
223. 2-15-91	224. 2-15-91	225. 2-15-91
226. 2-15-91	227. 2-15-91	228. 2-15-91
229. 2-15-91	230. 2-15-91	231. 2-15-91
232. 2-15-91	233. 2-15-91	234. 2-15-91
235. 2-15-91	236. 2-15-91	237. 2-15-91
238. 2-15-91	239. 2-15-91	240. 2-15-91
241. 2-15-91	242. 2-15-91	243. 2-15-91
244. 2-15-91	245. 2-15-91	246. 2-15-91
247. 2-15-91	248. 2-15-91	249. 2-15-91
250. 2-15-91	251. 2-15-91	252. 2-15-91
253. 2-15-91	254. 2-15-91	255. 2-15-91
256. 2-15-91	257. 2-15-91	258. 2-15-91
259. 2-15-91	260. 2-15-91	261. 2-15-91
262. 2-15-91	263. 2-15-91	264. 2-15-91
265. 2-15-91	266. 2-15-91	267. 2-15-91
268. 2-15-91	269. 2-15-91	270. 2-15-91
271. 2-15-91	272. 2-15-91	273. 2-15-91
274. 2-15-91	275. 2-15-91	276. 2-15-91
277. 2-15-91	278. 2-15-91	279. 2-15-91
280. 2-15-91	281. 2-15-91	282. 2-15-91
283. 2-15-91	284. 2-15-91	285. 2-15-91
286. 2-15-91	287. 2-15-91	288. 2-15-91
289. 2-15-91	290. 2-15-91	291. 2-15-91
292. 2-15-91	293. 2-15-91	294. 2-15-91
295. 2-15-91	296. 2-15-91	297. 2-15-91
298. 2-15-91	299. 2-15-91	300. 2-15-91
301. 2-15-91	302. 2-15-91	303. 2-15-91
304. 2-15-91	305. 2-15-91	306. 2-15-91
307. 2-15-91	308. 2-15-91	309. 2-15-91
310. 2-15-91	311. 2-15-91	312. 2-15-91
313. 2-15-91	314. 2-15-91	315. 2-15-91
316. 2-15-91	317. 2-15-91	318. 2-15-91
319. 2-15-91	320. 2-15-91	321. 2-15-91
322. 2-15-91	323. 2-15-91	324. 2-15-91
325. 2-15-91	326. 2-15-91	327. 2-15-91
328. 2-15-91	329. 2-15-91	330. 2-15-91
331. 2-15-91	332. 2-15-91	333. 2-15-91
334. 2-15-91	335. 2-15-91	336. 2-15-91
337. 2-15-91	338. 2-15-91	339. 2-15-91
340. 2-15-91	341. 2-15-91	342. 2-15-91
343. 2-15-91	344. 2-15-91	345. 2-15-91
346. 2-15-91	347. 2-15-91	348. 2-15-91
349. 2-15-91	350. 2-15-91	351. 2-15-91
352. 2-15-91	353. 2-15-91	354. 2-15-91
355. 2-15-91	356. 2-15-91	357. 2-15-91
358. 2-15-91	359. 2-15-91	360. 2-15-91
361. 2-15-91	362. 2-15-91	363. 2-15-91
364. 2-15-91	365. 2-15-91	366. 2-15-91
367. 2-15-91	368. 2-15-91	369. 2-15-91
370. 2-15-91	371. 2-15-91	372. 2-15-91
373. 2-15-91	374. 2-15-91	375. 2-15-91
376. 2-15-91	377. 2-15-91	378. 2-15-91
379. 2-15-91	380. 2-15-91	381. 2-15-91
382. 2-15-91	383. 2-15-91	384. 2-15-91
385. 2-15-91	386. 2-15-91	387. 2-15-91
388. 2-15-91	389. 2-15-91	390. 2-15-91
391. 2-15-91	392. 2-15-91	393. 2-15-91
394. 2-15-91	395. 2-15-91	396. 2-15-91
397. 2-15-91	398. 2-15-91	399. 2-15-91
400. 2-15-91	401. 2-15-91	402. 2-15-91
403. 2-15-91	404. 2-15-91	405. 2-15-91
406. 2-15-91	407. 2-15-91	408. 2-15-91
409. 2-15-91	410. 2-15-91	411. 2-15-91
412. 2-15-91	413. 2-15-91	414. 2-15-91
415. 2-15-91	416. 2-15-91	417. 2-15-91
418. 2-15-91	419. 2-15-91	420. 2-15-91
421. 2-15-91	422. 2-15-91	423. 2-15-91
424. 2-15-91	425. 2-15-91	426. 2-15-91
427. 2-15-91	428. 2-15-91	429. 2-15-91
430. 2-15-91	431. 2-15-91	432. 2-15-91
433. 2-15-91	434. 2-15-91	435. 2-15-91
436. 2-15-91	437. 2-15-91	438. 2-15-91
439. 2-15-91	440. 2-15-91	441. 2-15-91
442. 2-15-91	443. 2-15-91	444. 2-15-91
445. 2-15-91	446. 2-15-91	447. 2-15-91
448. 2-15-91	449. 2-15-91	450. 2-15-91
451. 2-15-91	452. 2-15-91	453. 2-15-91
454. 2-15-91	455. 2-15-91	456. 2-15-91
457. 2-15-91	458. 2-15-91	459. 2-15-91
460. 2-15-91	461. 2-15-91	462. 2-15-91
463. 2-15-91	464. 2-15-91	465. 2-15-91
466. 2-15-91	467. 2-15-91	468. 2-15-91
469. 2-15-91	470. 2-15-91	471. 2-15-91
472. 2-15-91	473. 2-15-91	474. 2-15-91
475. 2-15-91	476. 2-15-91	477. 2-15-91
478. 2-15-91	479. 2-15-91	480. 2-15-91
481. 2-15-91	482. 2-15-91	483. 2-15-91
484. 2-15-91	485. 2-15-91	486. 2-15-91
487. 2-15-91	488. 2-15-91	489. 2-15-91
490. 2-15-91	491. 2-15-91	492. 2-15-91
493. 2-15-91	494. 2-15-91	495. 2-15-91
496. 2-15-91	497. 2-15-91	498. 2-15-91
499. 2-15-91	500. 2-15-91	501. 2-15-91
502. 2-15-91	503. 2-15-91	504. 2-15-91
505. 2-15-91	506. 2-15-91	507. 2-15-91
508. 2-15-91	509. 2-15-91	510. 2-15-91
511. 2-15-91	512. 2-15-91	513. 2-15-91
514. 2-15-91	515. 2-15-91	516. 2-15-91
517. 2-15-91	518. 2-15-91	519. 2-15-91
520. 2-15-91	521. 2-15-91	522. 2-15-91
523. 2-15-91	524. 2-15-91	525. 2-15-91
526. 2-15-91	527. 2-15-91	528. 2-15-91
529. 2-15-91	530. 2-15-91	531. 2-15-91
532. 2-15-91	533. 2-15-91	534. 2-15-91
535. 2-15-91	536. 2-15-91	537. 2-15-91
538. 2-15-91	539. 2-15-91	540. 2-15-91
541. 2-15-91	542. 2-15-91	543. 2-15-91
544. 2-15-91	545. 2-15-91	546. 2-15-91
547. 2-15-91	548. 2-15-91	549. 2-15-91
550. 2-15-91	551. 2-15-91	552. 2-15-91
553. 2-15-91	554. 2-15-91	555. 2-15-91
556. 2-15-91	557. 2-15-91	558. 2-15-