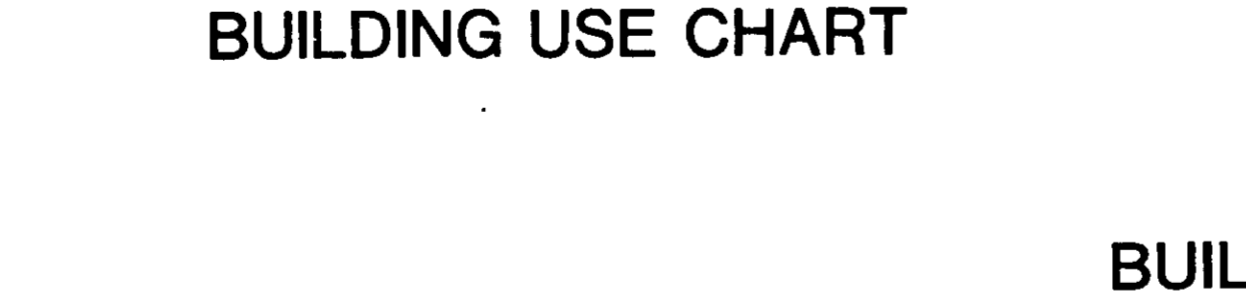


SPACE	A	B	C	D	E	TOTAL	% OF TOTAL	SQ. FT.
5 x 5	30	16	-	-	-	46	9.5	1,150
5 x 10	26	2	-	-	-	28	20.3	4,300
7.5 x 10	48	-	-	-	-	48	10	3,600
10 x 10	40	49	8	-	-	97	20.1	9,700
10 x 15	30	14	-	26	22	92	19.1	13,800
10 x 20	28	21	28	-	-	77	16	15,400
10 x 30	-	24	-	-	-	24	5.0	7,200
TOTAL	272	126	36	26	22	482	100	55,750



SOIL CONSERVATION SERVICE
NATURAL
CONSTRUCTION SPECIFICATIONS
FOR
PODS

These specifications are appropriate to pods within the scope of the Standard for practice 379.

I. **SITE PREPARATION**
Areas designated for borrow areas, embankment, and structural works shall be cleared, grubbed and stripped of topsoil. All trees, vegetation, roots and other objectionable material shall be removed. Channel banks and shore banks shall be at no steeper than 1:1.
Areas to be opened by the pod or otherwise will be cleared of all trees, brush, logs, stumps, rocks and other objectionable material unless otherwise designated on the plans. Trees, brush and stumps shall be cut approximately level with the ground surface.
All cleared and grubbed material shall be disposed of outside and below the limits of the dam and reservoir as directed by the owner or his representative. When specified, a sufficient quantity of topsoil will be deposited in a suitable location for use on the embankment and other designated areas.

II. **EMBRANKMENT**
The fill material shall be taken from approved designated borrow areas or areas. It shall be free of roots, stumps, wood, rubbish, oversize stones, frames or other objectionable materials. The embankment shall be constructed to an elevation which provides for anticipated settlement to the design elevation. The fill height all along the length of the embankment shall be increased above the design elevation (including freshets) as shown on the plans.

III. **STRUCTURAL MATERIALS**
The fill material shall be of the type and quality conforming to that specified for the adjoining fill material. The fill shall be placed in lifts of uniform thickness. All exposed surfaces of the embankment, spillway, spill and borrow areas, and borrow shall be stabilized by seeding, liming, fertilizing and mulching (if required) in accordance with the negative treatment specifications or as shown on the accompanying drawings.

VI. **STABILIZATION**
All borrow areas shall be graded to provide proper drainage and left in a slightly condition. All exposed surfaces of the embankment, spillway, spill and borrow areas, and borrow shall be stabilized by seeding, liming, fertilizing and mulching (if required) in accordance with the negative treatment specifications or as shown on the accompanying drawings.

VII. **EROSION AND SEDIMENT CONTROL**
Construction operations will be carried out in such a manner that erosion will be controlled and water and air pollution minimized. State and local laws concerning pollution abatement will be followed. Construction plans shall detail erosion and sediment control measures to be employed during the construction process.

THOMAS D. HARRIS, JR.
DIRECTOR
DEAP TELEPHONE NUMBER
OFFICE OF PLANNING & ZONING OF HOWARD COUNTY
GEORGE HOWARD BUILDING
3430 COUNTY HOUSE DRIVE, ELICOTT CITY, MARYLAND 21843-6888

DIVISION OF LAND DEVELOPMENT AND ZONING ADMINISTRATION
JOHN W. HARRIS, JR., CHIEF
DIVISION OF COMPREHENSIVE AND TRANSPORTATION PLANNING
JAN 15 1987
RECEIVED
PUBLIC STORAGE, INC.
S. E. REGION

January 8, 1987

RE: Residential - Security uses in M-1 & M-2 Districts

Dear Mr. Geertz:

In response to your letter of December 2, 1986, regarding the above referenced matter, review of Section 118.C.1 of the Howard County Zoning Regulations and the Planning Director's interpretation of December 12, 1986, accessory uses, permits a manager's dwelling unit apartment within the building housing the manager's office. The apartment is considered an accessory use for warehouses.

Should you have any questions regarding the above, please contact our office, 992-2352, at your convenience. A staff member familiar with this subject and correspondence will be available to assist you. Any problems with the processing of this matter or correspondence relevant to this subject should be directed to the signer.

Very truly yours,
John W. Harris, Jr., Chief
Division of Land Development and Zoning Administration

APPROVED: FOR PUBLIC WATER AND PUBLIC SEWERAGE SYSTEMS.
HOWARD COUNTY HEALTH DEPARTMENT

APPROVED: FOR PUBLIC WATER AND PUBLIC SEWERAGE, STORM DRAINAGE SYSTEMS AND PUBLIC ROADS
HOWARD COUNTY DEPARTMENT OF PUBLIC WORKS

APPROVED: FOR PUBLIC WATER AND PUBLIC SEWERAGE SYSTEMS AND PUBLIC ROADS
HOWARD COUNTY DEPARTMENT OF PUBLIC WORKS

APPROVED: FOR PUBLIC WATER AND PUBLIC SEWERAGE SYSTEMS AND PUBLIC ROADS
HOWARD COUNTY DEPARTMENT OF PUBLIC WORKS

APPROVED: FOR PUBLIC WATER AND PUBLIC SEWERAGE SYSTEMS AND PUBLIC ROADS
HOWARD COUNTY DEPARTMENT OF PUBLIC WORKS

SITE PLAN DETAILS

OWNER: INSTITUTIONAL REALTY FUND NO. 2, 1015 GRANDVIEW AVENUE, GLENDALE, CALIFORNIA 91201-5050

PROJECT: PUBLIC STORAGE, INC., OLD WATERLOO ROAD PSI NO. 0611

LOCATION: 1ST ELECTION DISTRICT, HOWARD COUNTY, MARYLAND, TAX MAP 43, PARCEL 123, C.M.P. 1244, FOLIO 889

DEVELOPER/CONTRACT PURCHASER: PUBLIC STORAGE, INC., 4707 EISENHOWER AVENUE, ALEXANDRIA, VIRGINIA 22304

IMPROVEMENTS: DATE MARCH 1987, SCALE AS SHOWN, SHT. 2 OF 7

PROJECT: 87064.00, date: 3/87, illustration: RND, scale: AS, approval: SHOWN, PEB

4: SEE INDEX ON SHT. 10711, SUB. TO I.C. OPFZ
3: REVISED PER COUNTY COMMENTS
2: REVISED PER COUNTY COMMENTS
1: REVISED PER COUNTY COMMENTS
0: FIRST SUBMITTAL TO COUNTY

DATE: 4-1-90, 5-26-90, 6-26-90, 7-16-90, 8-16-90, 9-16-90, 10-16-90, 11-16-90, 12-16-90

DESIGNATION: DESIGN, REVISIONS

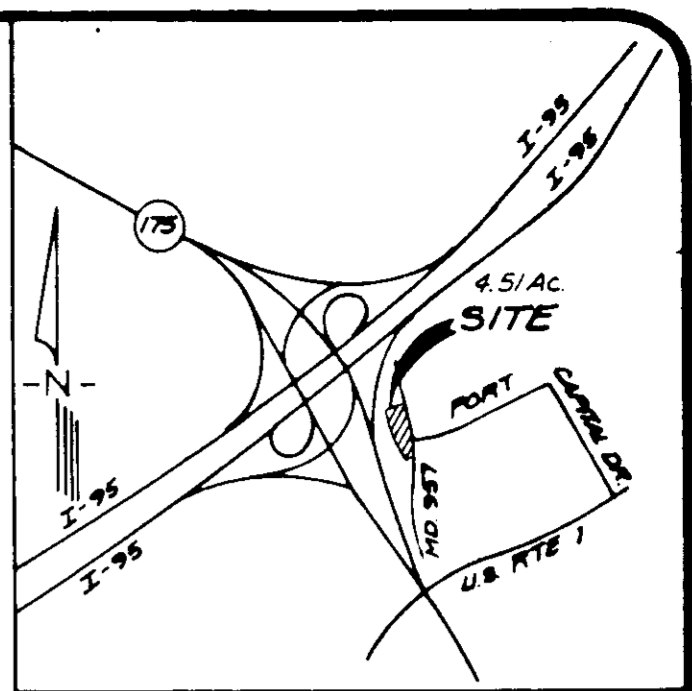
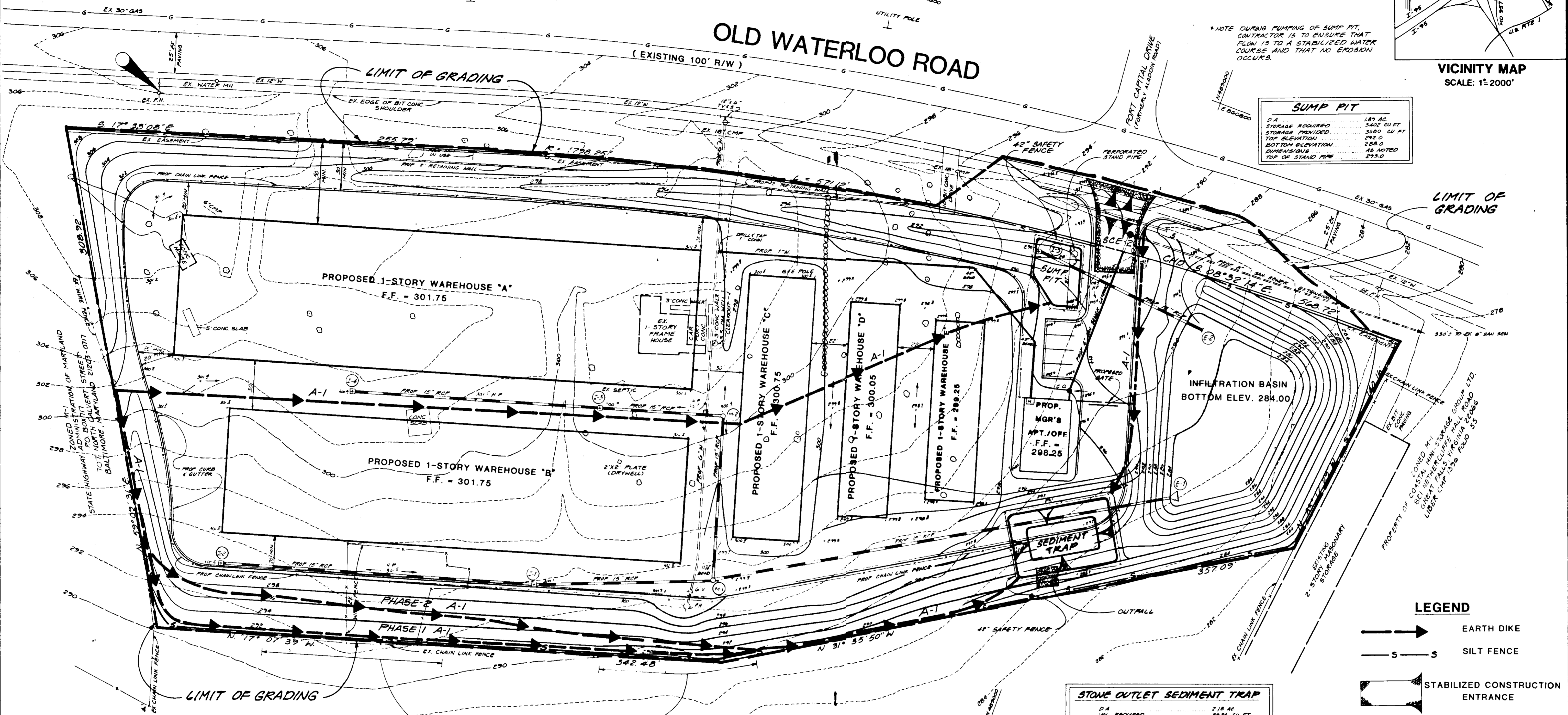
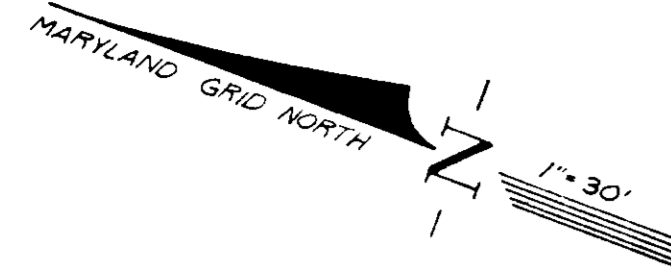
PUBLIC STORAGE INC.
OLD WATERLOO ROAD PSI NO. 0611
1ST ELECTION DISTRICT HOWARD COUNTY, MARYLAND
SITE PLAN DETAILS

kamber engineering, inc.
civil, environmental, surveying, leeburg, va, (703) 777-9822

2 of 11

SDP-90-94 SDP-87-190

BENCH MARK
NO. 1X - CUT TOP ROADSIDE BOMMET
DOLY OF FIRE HYDRANT -
ELEVATION 306.85



VICINITY MAP
SCALE: 1" = 2000'

SUMP PIT

D.A.	180 AC
STORAGE REQUIRED	3400 CU FT
STORAGE PROVIDED	3500 CU FT
TOP ELEVATION	292.0
BOTTOM ELEVATION	288.0
DIMENSIONS	AS NOTED
TOP OF STAND PIPE	293.0

STONE OUTLET SEDIMENT TRAP

D.A.	2.18 AC
VOL. REQUIRED	3928 CU FT
VOL. PROVIDED	4207 CU FT
EMBANK. ELEV.	288.0
WATER ELEVATION	287.0
BOTTOM ELEVATION	285.5
BOTTOM DIMENSIONS	20' x 41'
WATER LENGTH	18'
TYPE	6" x 2" STONE OUTLET

- LEGEND**
- EARTH DIKE
 - SILT FENCE
 - STABILIZED CONSTRUCTION ENTRANCE
 - LIMIT OF GRADING

These plans have been reviewed for the Howard Soil Conservation District and meet the technical requirements for small pond construction, soil erosion, and sediment control.

Approved: *[Signature]* 5/1/90
Soil Conservation Service

These plans for small pond construction, soil erosion and sediment control meet the requirements of the Howard Soil Conservation District.

Approved: *[Signature]* 5/1/90
Howard Soil Conservation District

POSITIVE DRAINAGE IS TO BE MAINTAINED AT ALL TIMES IN THESE AREAS.

ZONED M-1
PROPERTY OF STATE HIGHWAY ADMINISTRATION
OF MARYLAND
P.O. BOX 717
707 NORTH CALVERT STREET
BALTIMORE, MARYLAND 21203-0717

PLAN SCALE: 1" = 30'

PLAN FOR SEDIMENT CONTROL CONSTRUCTION ONLY
SEE SITE PLAN (SHEET 1 of 7) FOR SITE CONSTRUCTION DETAILS

APPROVED: FOR PUBLIC WATER AND PUBLIC SEWERAGE SYSTEMS
HOWARD COUNTY HEALTH DEPARTMENT

[Signature] 6-26-90
DATE

APPROVED: HOWARD COUNTY DEPT. OF PLANNING & ZONING

[Signature] 7/26/90
DATE

APPROVED: FOR PUBLIC WATER AND PUBLIC SEWERAGE
STORM DRAINAGE SYSTEMS AND PUBLIC WORKS
HOWARD COUNTY DEPARTMENT OF PUBLIC WORKS

[Signature] 6/26/90
DATE

By the Developer:

"I certify that all development and/or construction will be done according to these plans, and that any responsible personnel involved in the construction project will have a Certificate of Attendance at a Department of Natural Resources Approved Training Program for the Control of Sediment and Erosion before beginning the project. I will provide the Howard Soil Conservation District with an "as-built" plan of the pond within 30 days of completion."

Signature of Developer: _____ Date: _____
Print name below signature

By the Engineer:

"I certify that this plan for pond construction, erosion and sediment control represents a practical and workable plan based on my personal knowledge of the site conditions. This plan was prepared in accordance with the requirements of the Howard Soil Conservation District. I have notified the developer that he must provide the Howard Soil Conservation District with an "as-built" plan of the pond within 30 days of completion."

Signature of Engineer: *[Signature]* 4/3/90
Print name below signature: *Stuart W. Sibold*

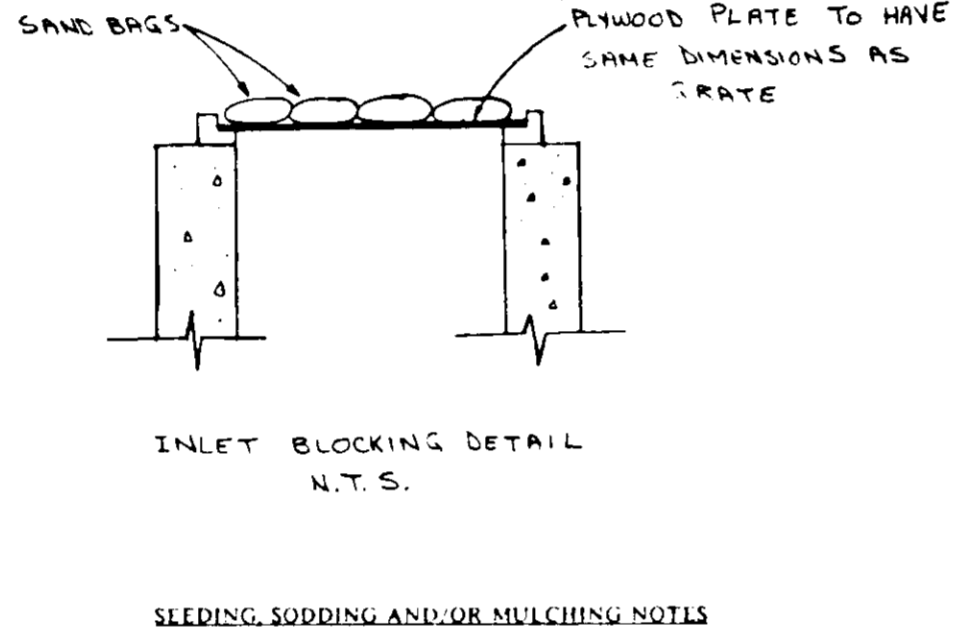
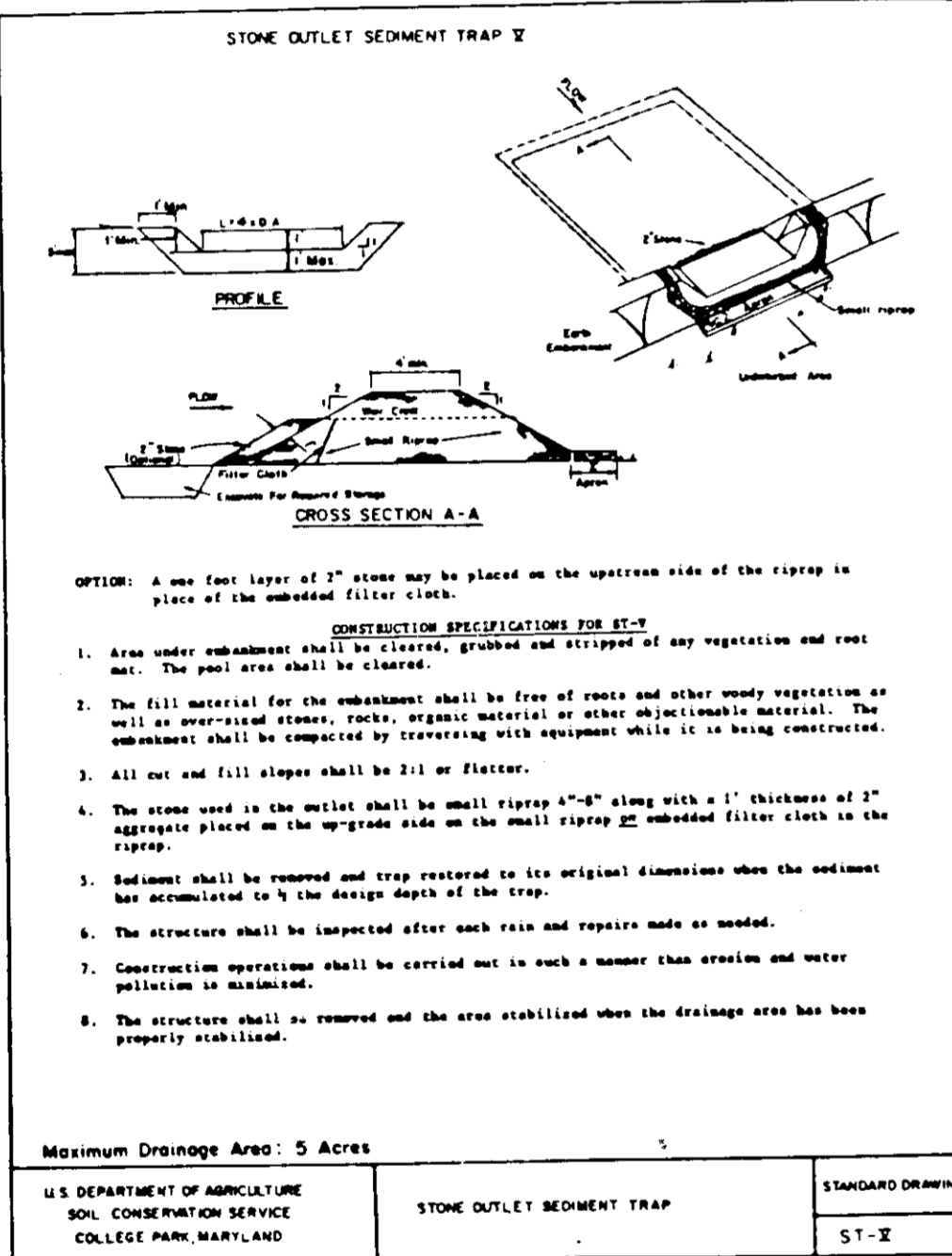
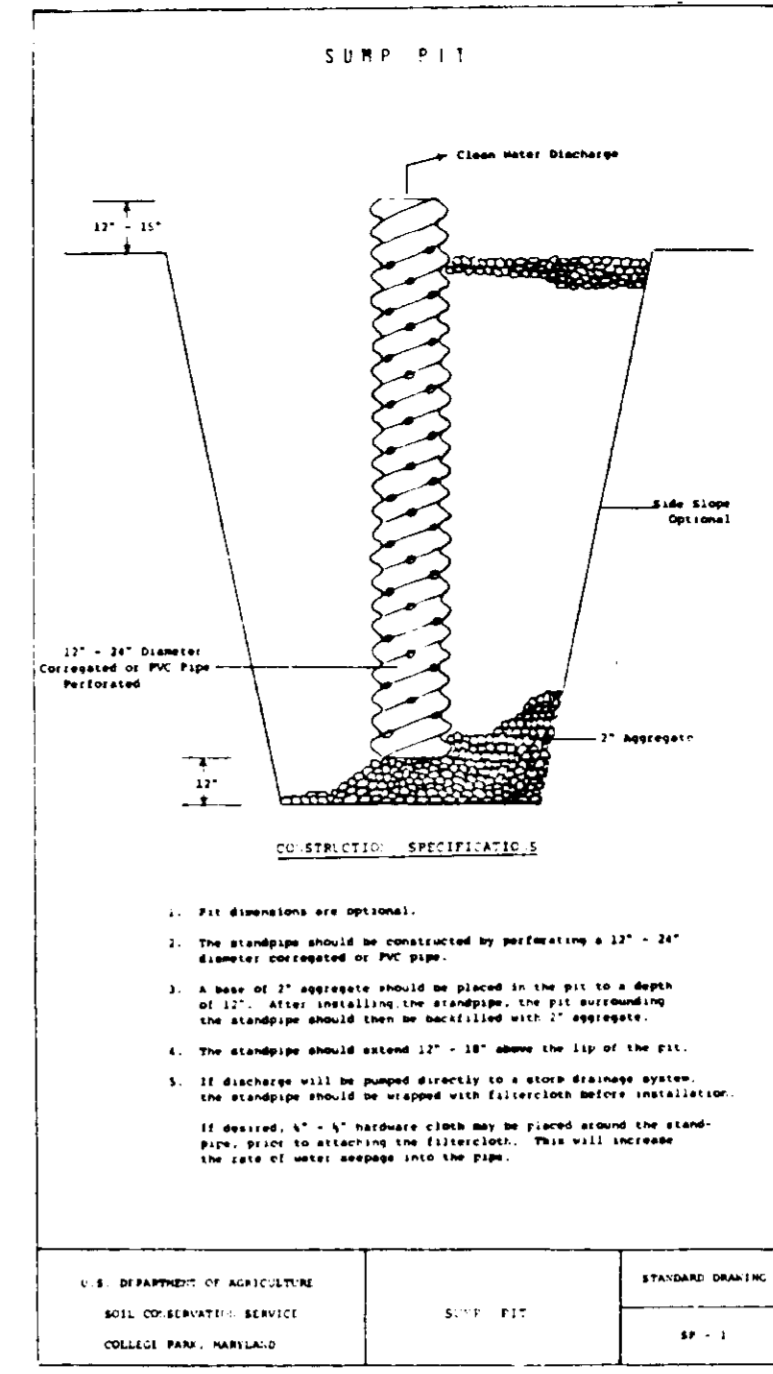
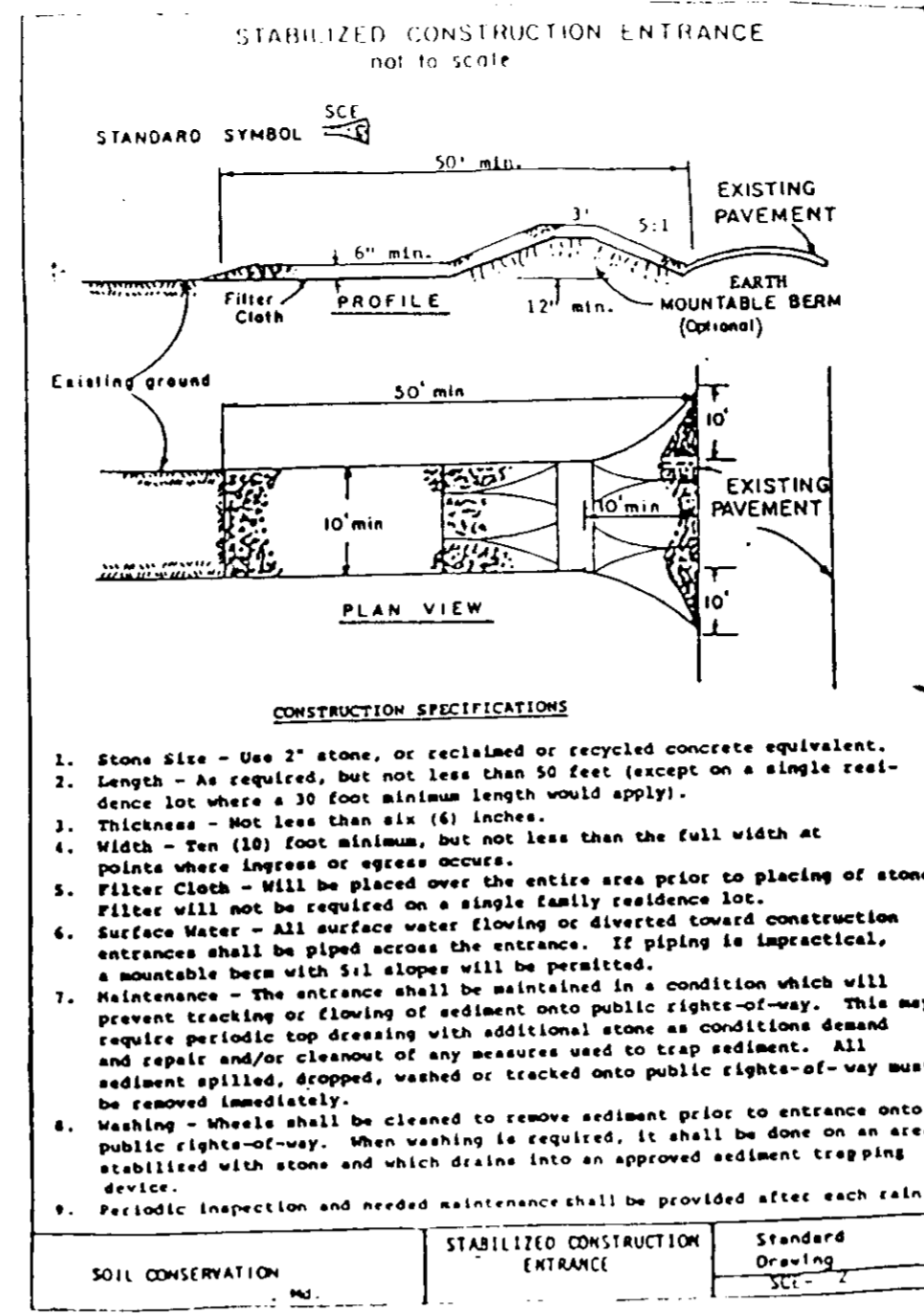
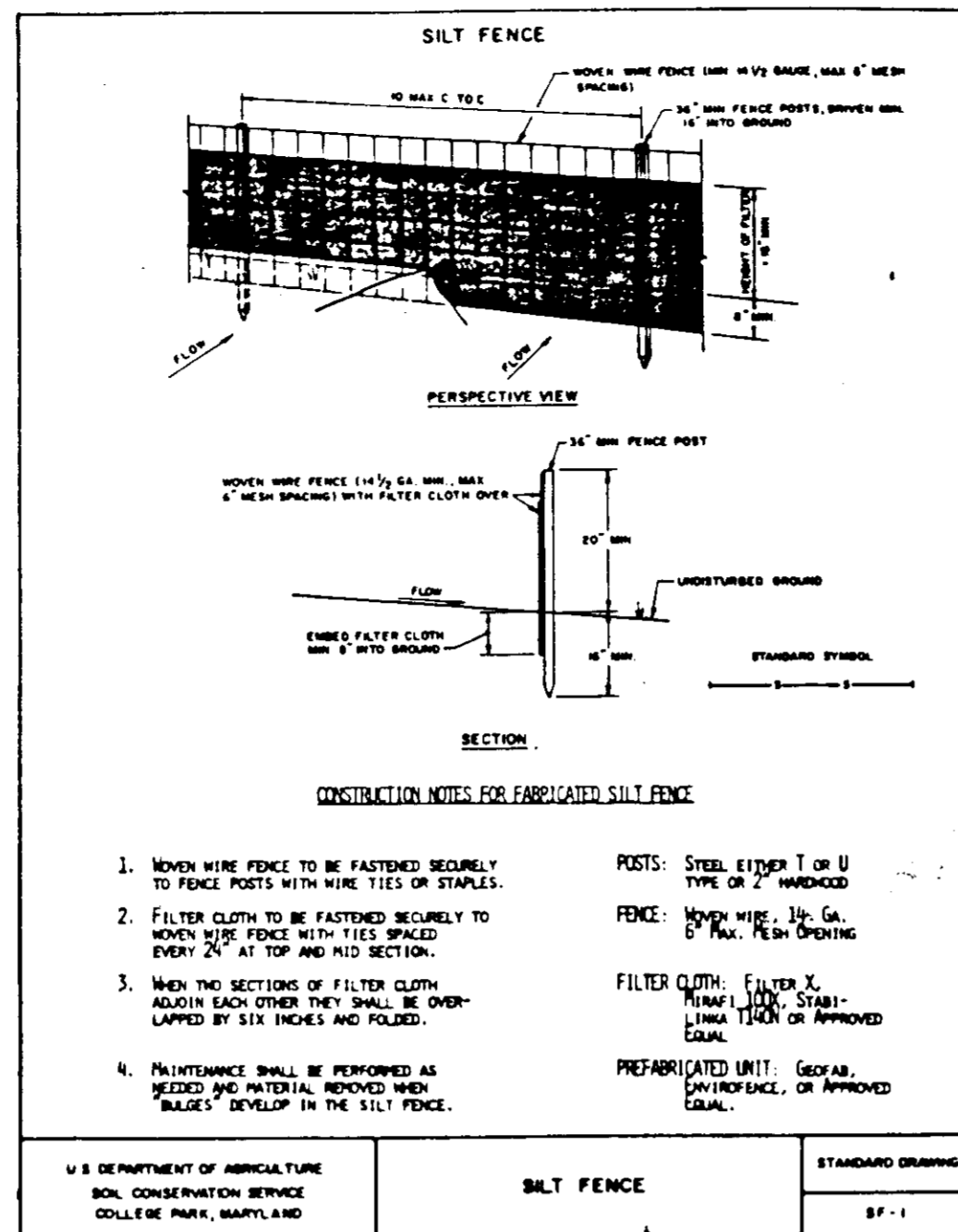
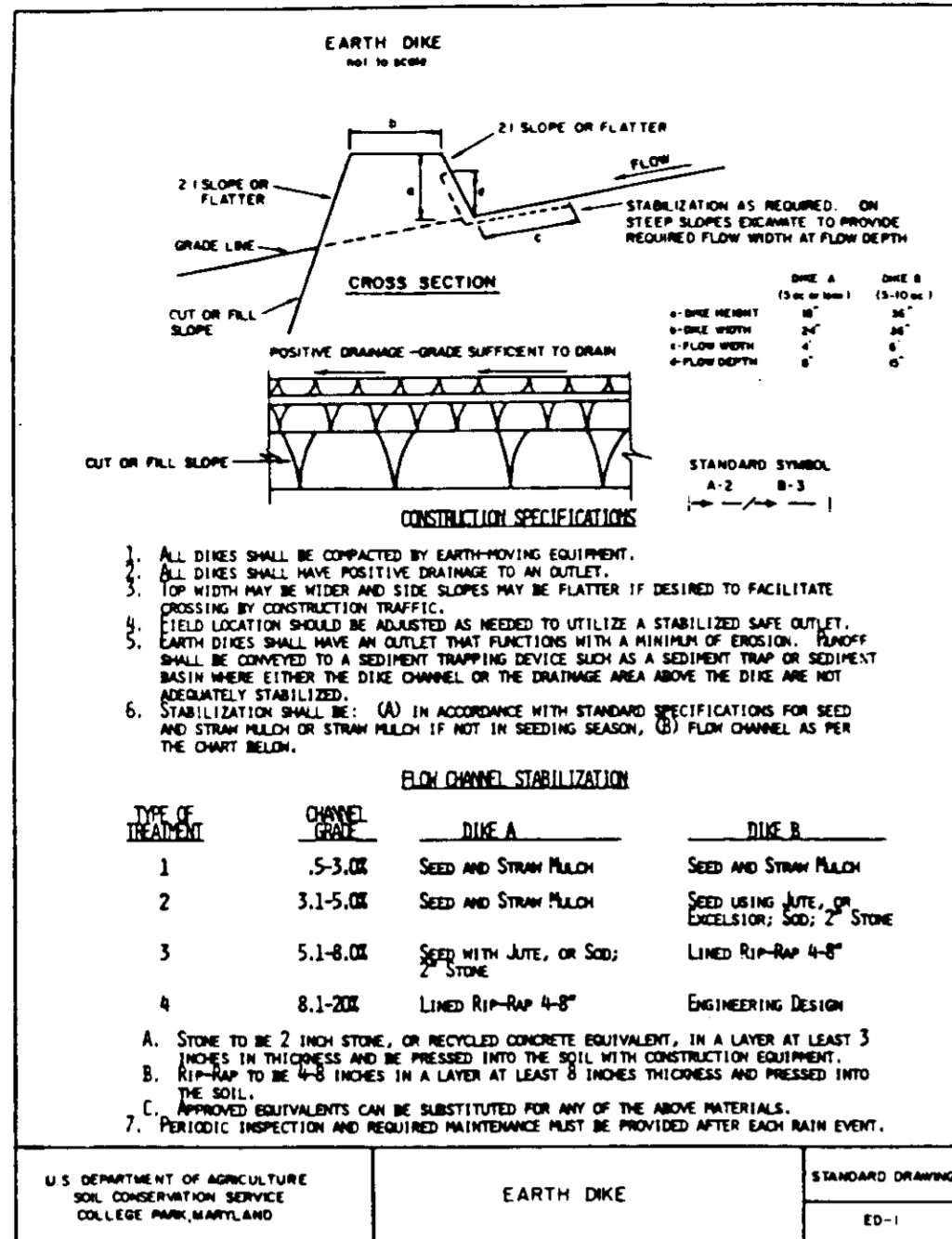
OWNER INTERNATIONAL REALTY FUND NO 2 1050 GRANDVIEW AVENUE GLENDALE, CALIFORNIA 91201-5050	PROJECT PUBLIC STORAGE INC. OLD WATERLOO ROAD PSI No. 0611
DEVELOPER/CONTRACT PURCHASER PUBLIC STORAGE, INC. 4707 EISENHOWER AVENUE ALEXANDRIA, VIRGINIA 22304	LOCATION 1 ST ELECTION DISTRICT, HOWARD COUNTY, MARYLAND TAX MAP 45, PARCEL 183 C.M.P. 1244 FOLIO 822
TITLE SEDIMENT & EROSION CONTROL PLAN	IMPROVEMENTS
DATE MARCH 1987	SCALE 1" = 30'
SHEET 4 OF 7	

Project	0611	Date	3/87
Revision	1	By	JAR/RMD
Revision	2	By	LEH/MSI
Revision	3	By	JAR/RMD
Revision	4	By	JAR/RMD
Revision	5	By	JAR/RMD
Revision	6	By	JAR/RMD
Revision	7	By	JAR/RMD
Revision	8	By	JAR/RMD
Revision	9	By	JAR/RMD
Revision	10	By	JAR/RMD
Revision	11	By	JAR/RMD
Revision	12	By	JAR/RMD
Revision	13	By	JAR/RMD
Revision	14	By	JAR/RMD
Revision	15	By	JAR/RMD
Revision	16	By	JAR/RMD
Revision	17	By	JAR/RMD
Revision	18	By	JAR/RMD
Revision	19	By	JAR/RMD
Revision	20	By	JAR/RMD
Revision	21	By	JAR/RMD
Revision	22	By	JAR/RMD
Revision	23	By	JAR/RMD
Revision	24	By	JAR/RMD
Revision	25	By	JAR/RMD
Revision	26	By	JAR/RMD
Revision	27	By	JAR/RMD
Revision	28	By	JAR/RMD
Revision	29	By	JAR/RMD
Revision	30	By	JAR/RMD
Revision	31	By	JAR/RMD
Revision	32	By	JAR/RMD
Revision	33	By	JAR/RMD
Revision	34	By	JAR/RMD
Revision	35	By	JAR/RMD
Revision	36	By	JAR/RMD
Revision	37	By	JAR/RMD
Revision	38	By	JAR/RMD
Revision	39	By	JAR/RMD
Revision	40	By	JAR/RMD
Revision	41	By	JAR/RMD
Revision	42	By	JAR/RMD
Revision	43	By	JAR/RMD
Revision	44	By	JAR/RMD
Revision	45	By	JAR/RMD
Revision	46	By	JAR/RMD
Revision	47	By	JAR/RMD
Revision	48	By	JAR/RMD
Revision	49	By	JAR/RMD
Revision	50	By	JAR/RMD
Revision	51	By	JAR/RMD
Revision	52	By	JAR/RMD
Revision	53	By	JAR/RMD
Revision	54	By	JAR/RMD
Revision	55	By	JAR/RMD
Revision	56	By	JAR/RMD
Revision	57	By	JAR/RMD
Revision	58	By	JAR/RMD
Revision	59	By	JAR/RMD
Revision	60	By	JAR/RMD
Revision	61	By	JAR/RMD
Revision	62	By	JAR/RMD
Revision	63	By	JAR/RMD
Revision	64	By	JAR/RMD
Revision	65	By	JAR/RMD
Revision	66	By	JAR/RMD
Revision	67	By	JAR/RMD
Revision	68	By	JAR/RMD
Revision	69	By	JAR/RMD
Revision	70	By	JAR/RMD
Revision	71	By	JAR/RMD
Revision	72	By	JAR/RMD
Revision	73	By	JAR/RMD
Revision	74	By	JAR/RMD
Revision	75	By	JAR/RMD
Revision	76	By	JAR/RMD
Revision	77	By	JAR/RMD
Revision	78	By	JAR/RMD
Revision	79	By	JAR/RMD
Revision	80	By	JAR/RMD
Revision	81	By	JAR/RMD
Revision	82	By	JAR/RMD
Revision	83	By	JAR/RMD
Revision	84	By	JAR/RMD
Revision	85	By	JAR/RMD
Revision	86	By	JAR/RMD
Revision	87	By	JAR/RMD
Revision	88	By	JAR/RMD
Revision	89	By	JAR/RMD
Revision	90	By	JAR/RMD
Revision	91	By	JAR/RMD
Revision	92	By	JAR/RMD
Revision	93	By	JAR/RMD
Revision	94	By	JAR/RMD
Revision	95	By	JAR/RMD
Revision	96	By	JAR/RMD
Revision	97	By	JAR/RMD
Revision	98	By	JAR/RMD
Revision	99	By	JAR/RMD
Revision	100	By	JAR/RMD

4	SEE INDEX ON SHEET 10111 SUB. TO HC OF P/L Z	4/4/90	DATE
5	REVISED PER COUNTY COMMENTS	3/2/91	DATE
6	REVISED PER COUNTY COMMENTS	6/2/91	DATE
7	REVISED PER COUNTY COMMENTS	8/1/91	DATE
8	REVISED PER COUNTY COMMENTS	9/1/91	DATE
9	REVISED PER COUNTY COMMENTS	10/1/91	DATE
10	REVISED PER COUNTY COMMENTS	11/1/91	DATE
11	REVISED PER COUNTY COMMENTS	12/1/91	DATE
12	REVISED PER COUNTY COMMENTS	1/1/92	DATE
13	REVISED PER COUNTY COMMENTS	2/1/92	DATE
14	REVISED PER COUNTY COMMENTS	3/1/92	DATE
15	REVISED PER COUNTY COMMENTS	4/1/92	DATE
16	REVISED PER COUNTY COMMENTS	5/1/92	DATE
17	REVISED PER COUNTY COMMENTS	6/1/92	DATE
18	REVISED PER COUNTY COMMENTS	7/1/92	DATE
19	REVISED PER COUNTY COMMENTS	8/1/92	DATE
20	REVISED PER COUNTY COMMENTS	9/1/92	DATE
21	REVISED PER COUNTY COMMENTS	10/1/92	DATE
22	REVISED PER COUNTY COMMENTS	11/1/92	DATE
23	REVISED PER COUNTY COMMENTS	12/1/92	DATE
24	REVISED PER COUNTY COMMENTS	1/1/93	DATE
25	REVISED PER COUNTY COMMENTS	2/1/93	DATE
26	REVISED PER COUNTY COMMENTS	3/1/93	DATE
27	REVISED PER COUNTY COMMENTS	4/1/93	DATE
28	REVISED PER COUNTY COMMENTS	5/1/93	DATE
29	REVISED PER COUNTY COMMENTS	6/1/93	DATE
30	REVISED PER COUNTY COMMENTS	7/1/93	DATE
31	REVISED PER COUNTY COMMENTS	8/1/93	DATE
32	REVISED PER COUNTY COMMENTS	9/1/93	DATE
33	REVISED PER COUNTY COMMENTS	10/1/93	DATE
34	REVISED PER COUNTY COMMENTS	11/1/93	DATE
35	REVISED PER COUNTY COMMENTS	12/1/93	DATE
36	REVISED PER COUNTY COMMENTS	1/1/94	DATE
37	REVISED PER COUNTY COMMENTS	2/1/94	DATE
38	REVISED PER COUNTY COMMENTS	3/1/94	DATE
39	REVISED PER COUNTY COMMENTS	4/1/94	DATE
40	REVISED PER COUNTY COMMENTS	5/1/94	DATE
41	REVISED PER COUNTY COMMENTS	6/1/94	DATE
42	REVISED PER COUNTY COMMENTS	7/1/94	DATE
43	REVISED PER COUNTY COMMENTS	8/1/94	DATE
44	REVISED PER COUNTY COMMENTS	9/1/94	DATE
45	REVISED PER COUNTY COMMENTS	10/1/94	DATE
46	REVISED PER COUNTY COMMENTS	11/1/94	DATE
47	REVISED PER COUNTY COMMENTS	12/1/94	DATE
48	REVISED PER COUNTY COMMENTS	1/1/95	DATE
49	REVISED PER COUNTY COMMENTS	2/1/95	DATE
50	REVISED PER COUNTY COMMENTS	3/1/95	DATE
51	REVISED PER COUNTY COMMENTS	4/1/95	DATE
52	REVISED PER COUNTY COMMENTS	5/1/95	DATE
53	REVISED PER COUNTY COMMENTS	6/1/95	DATE
54	REVISED PER COUNTY COMMENTS	7/1/95	DATE
55	REVISED PER COUNTY COMMENTS	8/1/95	DATE
56	REVISED PER COUNTY COMMENTS	9/1/95	DATE
57	REVISED PER COUNTY COMMENTS	10/1/95	DATE
58	REVISED PER COUNTY COMMENTS	11/1/95	DATE
59	REVISED PER COUNTY COMMENTS	12/1/95	DATE
60	REVISED PER COUNTY COMMENTS	1/1/96	DATE
61	REVISED PER COUNTY COMMENTS	2/1/96	DATE
62	REVISED PER COUNTY COMMENTS	3/1/96	DATE
63	REVISED PER COUNTY COMMENTS	4/1/96	DATE
64	REVISED PER COUNTY COMMENTS	5/1/96	DATE
65	REVISED PER COUNTY COMMENTS	6/1/96	DATE
66	REVISED PER COUNTY COMMENTS	7/1/96	DATE
67	REVISED PER COUNTY COMMENTS	8/1/96	DATE
68	REVISED PER COUNTY COMMENTS	9/1/96	DATE
69	REVISED PER COUNTY COMMENTS	10/1/96	DATE
70	REVISED PER COUNTY COMMENTS	11/1/96	DATE
71	REVISED PER COUNTY COMMENTS	12/1/96	DATE
72	REVISED PER COUNTY COMMENTS	1/1/97	DATE
73	REVISED PER COUNTY COMMENTS	2/1/97	DATE
74	REVISED PER COUNTY COMMENTS	3/1/97	DATE
75	REVISED PER COUNTY COMMENTS	4/1/97	DATE
76	REVISED PER COUNTY COMMENTS	5/1/97	DATE
77	REVISED PER COUNTY COMMENTS	6/1/97	DATE
78	REVISED PER COUNTY COMMENTS	7/1/97	DATE
79	REVISED PER COUNTY COMMENTS	8/1/97	DATE
80	REVISED PER COUNTY COMMENTS	9/1/97	DATE
81	REVISED PER COUNTY COMMENTS	10/1/97	DATE
82	REVISED PER COUNTY COMMENTS	11/1/97	DATE
83	REVISED PER COUNTY COMMENTS	12/1/97	DATE
84	REVISED PER COUNTY COMMENTS	1/1/98	DATE
85	REVISED PER COUNTY COMMENTS	2/1/98	DATE
86	REVISED PER COUNTY COMMENTS	3/1/98	DATE
87	REVISED PER COUNTY COMMENTS	4/1/98	DATE
88	REVISED PER COUNTY COMMENTS	5/1/98	DATE
89	REVISED PER COUNTY COMMENTS	6/1/98	DATE
90	REVISED PER COUNTY COMMENTS	7/1/98	DATE
91	REVISED PER COUNTY COMMENTS	8/1/98	DATE
92	REVISED PER COUNTY COMMENTS	9/1/98	DATE
93	REVISED PER COUNTY COMMENTS	10/1/98	DATE
94	REVISED PER COUNTY COMMENTS	11/1/98	DATE
95	REVISED PER COUNTY COMMENTS	12/1/98	DATE
96	REVISED PER COUNTY COMMENTS	1/1/99	DATE
97	REVISED PER COUNTY COMMENTS	2/1/99	DATE
98	REVISED PER COUNTY COMMENTS	3/1/99	DATE
99	REVISED PER COUNTY COMMENTS	4/1/99	DATE
100	REVISED PER COUNTY COMMENTS	5/1/99	DATE

PUBLIC STORAGE INC.
OLD WATERLOO ROAD PSI No. 0611
1ST ELECTION DISTRICT HOWARD COUNTY, MARYLAND
SEDIMENT AND EROSION CONTROL PLAN

kamber engineering, inc.
107 Chestnut Street
Baltimore, Maryland 21202
(301) 840-1030



SEDIMENT CONTROL NOTES

- A minimum of 24 hours notice of inspection and permits must be given to the Howard County Office of Inspection and Permits (992-2437) prior to the start of any construction.
- All vegetative and structural practices are to be installed according to the provisions of this plan and are to be in conformance with the 1983 MARYLAND STANDARDS AND SPECIFICATIONS FOR SOIL EROSION AND SEDIMENT CONTROL.
- Following initial soil disturbance or re-disturbance, permanent or temporary stabilization shall be completed within: a) 7 calendar days for all perimeter sediment control structures, dikes, perimeter slopes and all slopes greater than 3:1, b) 14 days as to all other disturbed or graded areas on the project site.
- All sediment traps/basins shown must be fenced and warning signs posted around their perimeter in accordance with Vol. 1, Chapter 12, of the HOWARD COUNTY DESIGN MANUAL, Storm Drainage.
- All disturbed areas must be stabilized within the time period specified above in accordance with the 1983 MARYLAND STANDARDS AND SPECIFICATIONS FOR SOIL EROSION AND SEDIMENT CONTROL for permanent seedings (Sec. 51) and sod (Sec. 54), temporary seeding (Sec. 50) and mulching (Sec. 52.) Temporary stabilization with mulch alone can only be done when recommended seeding dates do not allow for proper germination and establishment of grasses.
- All sediment control structures are to remain in place and are to be maintained in operative condition until permission for their removal has been obtained from the Howard County Sediment Control Inspector.

Total Area of Site	4.51 Acres
Area Disturbed	4.75 Acres
Area to be roofed or paved	2.34 Acres
Area to be vegetatively stabilized	1.37 Acres
Total Cut	826 Cu. yds
Total Fill	7343 Cu. yds
Offsite waste/borrow area location	

SEQUENCE OF CONSTRUCTION

- OBTAIN GRADING PERMIT.
- CLEAR AND GRUB ONLY THE AREA NECESSARY FOR CONSTRUCTION OF THE STABILIZED CONSTRUCTION ENTRANCE. CONSTRUCT ENTRANCE.
- CLEAR AND GRUB AREAS NECESSARY FOR THE INSTALLATION OF THE SEDIMENT CONTROL DEVICES INCLUDING PHASE 1 EARTH DIKE ALONG WESTERN PROPERTY LINE, EARTH DIKE NORTH OF PROPOSED INFILTRATION BASIN, SILT FENCES, SUMP PIT #1, AND SEDIMENT TRAP #1.
- CONSTRUCT SEDIMENT CONTROL DEVICES AND STABILIZE IMMEDIATELY.
- CLEAR AND GRUB REMAINDER OF SITE.
- REMOVE EXISTING ONE-STORY HOUSE AND OTHER EXISTING STRUCTURES.
- INSTALL EARTH DIKE ALONG CENTER OF SITE.
- FINAL GRADE SITE INCLUDING THE SWALE ALONG THE EASTERN PROPERTY LINE. ADJUST EXISTING GRADES IN SWALE TO MAINTAIN POSITIVE DRAINAGE TO SUMP PIT #1. STABILIZE SWALE IMMEDIATELY.
- INSTALL PHASE 2 EARTH DIKE.
- REMOVE PHASE 1 EARTH DIKE AND INSTALL SILT FENCE ALONG WESTERN PROPERTY LINE.
- STABILIZE ANY AREAS NOT TO BE PAVED PER STANDARDS AND SPECIFICATIONS FOR PERMANENT SEEDING.
- INSTALL WATER AND SEWER SYSTEM.
- INSTALL STORM DRAIN SYSTEM FROM INLET I-4 TO MANHOLE M-1 AND FROM INLET I-2 TO MANHOLE M-1, PROVIDING AN 18" STUB FOR THE FUTURE CONNECTION OF AN 18" RCP FROM MANHOLE M-1 TO OUTFALL E-1 IN THE INFILTRATION BASIN.
- PROVIDE INLET BLOCKING FOR INLETS I-1 TO I-4.
- INSTALL CURB AND GUTTER, EXCEPT FOR AREAS SOUTH OF MANHOLE M-1 AND ANY AREAS NECESSARY TO PROVIDE ACCESS TO SITE.
- REMOVE EARTH DIKE AT CENTER OF SITE.
- BEGIN BUILDING CONSTRUCTION WITH BUILDINGS AT NORTH END OF SITE AND INSTALL BASE COURSE PAVING WHEN CONSTRUCTION HAS PROCEEDED SUFFICIENTLY TO PERMIT SAID INSTALLATION.
- CLEAR AND GRUB THE AREA NECESSARY FOR CONSTRUCTION OF THE INFILTRATION BASIN. CONSTRUCT BASIN.
- FINE GRADE AREA AROUND INFILTRATION BASIN AND STABILIZE IMMEDIATELY.
- AS RESPECTIVE DRAINAGE AREAS BECOME STABILIZED REDUCE CAPACITY OF SUMP PIT #1 AND SEDIMENT TRAP #1 ACCORDINGLY.
- INSTALL 18" RCP FROM MANHOLE M-1 TO OUTFALL E-1 IN INFILTRATION BASIN WHEN CAPACITY OF SEDIMENT TRAP #1 IS SUFFICIENTLY REDUCED TO PERMIT CONSTRUCTION.
- REMOVE INLET BLOCKING ONCE STORM DRAIN SYSTEM INCLUDING INFILTRATION BASIN IS OPERATIONAL.
- COMPLETE INSTALLATION OF CURB AND GUTTER AND BASE COURSE PAVING.
- ONCE DRAINAGE AREAS TO RESPECTIVE SEDIMENT CONTROL DEVICES ARE COMPLETELY STABILIZED AND UPON APPROVAL FROM SEDIMENT CONTROL INSPECTOR, REMOVE SEDIMENT CONTROL DEVICES EXCLUDING EARTH DIKE NORTH OF INFILTRATION BASIN.
- FOLLOWING REMOVAL OF SUMP PIT #1, INSTALL INLET I-5 AND 18" RCP OUTLET INTO INFILTRATION BASIN.
- FINALIZE GRADING IN SWALE IN VICINITY OF INLET I-5 AND STABILIZE COMPLETELY.
- REMOVE STABILIZED CONSTRUCTION ENTRANCE AND CONSTRUCT MSHA ACCESS.
- REMOVE EARTH DIKE NORTH OF INFILTRATION BASIN.
- COMPLETE CONSTRUCTION OF BUILDINGS AND STABILIZE ANY REMAINING DISTURBED AREAS PER STANDARDS AND SPECIFICATIONS FOR PERMANENT SEEDING.

These plans have been reviewed for the Howard Soil Conservation District and meet the technical requirements for small pond construction, soil erosion and sediment control.

These plans for small pond construction, soil erosion and sediment control meet the requirements of the Howard Soil Conservation District.

5/1/90
 [Signature] Date
 [Signature] Date

APPROVED: FOR PUBLIC WATER AND PUBLIC SEWERAGE SYSTEMS
 HOWARD COUNTY HEALTH DEPARTMENT
 [Signature] DATE 6/26/90
 [Signature] DATE 7/26/90
 [Signature] DATE 8/1/90

APPROVED: FOR PUBLIC WATER AND PUBLIC SEWERAGE
 FROM DRAINAGE SYSTEMS AND PUBLIC ROADS
 HOWARD COUNTY DEPARTMENT OF PUBLIC WORKS
 [Signature] DATE 6/26/90
 [Signature] DATE

By the Developer:
 "I certify that all development and/or construction will be done according to these plans, and that any responsible personnel involved in the construction project will have a Certificate of Attendance at a Department of Natural Resources Approved Training Program for the Control of Sediment and Erosion before beginning the project. I will provide the Howard Soil Conservation District with an "as-built" plan of the pond within 30 days of completion."
 [Signature] Date

By the Engineer:
 "I certify that this plan for pond construction, erosion and sediment control represents a practical and workable plan based on my personal knowledge of the site conditions. This plan was prepared in accordance with the requirements of the Howard Soil Conservation District. I have notified the developer that he must provide the Howard Soil Conservation District with an "as-built" plan of the pond within 30 days of completion."
 [Signature] DATE 4/3/90
 [Signature]

OWNER: INTERNATIONAL REALTY FUND NO 2, 1050 GRANDVIEW AVENUE, GLENDALE, CALIFORNIA 91201-5050

PROJECT: PUBLIC STORAGE INC., OLD WATERLOO ROAD PSI No. 0611

LOCATION: 16TH ELECTION DISTRICT, HOWARD COUNTY, MARYLAND, TAX MAP 48, PARCEL 128, C.M.P. 1244 FOLIO 808

DEVELOPER/CONTRACT PURCHASER: PUBLIC STORAGE, INC., 4707 EISENHOWER AVENUE, ALEXANDRIA, VIRGINIA 22304

PROJECT: SEDIMENT & EROSION CONTROL DETAILS

DATE: MARCH 1987 SCALE: 1" = 60' SHEET 5 OF 7

project: 87084.00 date: 3/87
 illustration: RND MSI
 scale: NO approval: PEB

4/1/90 SEE INDEX ON SHEET 10111 SUBS TO HC DP-12
 5/2/90 REVISED PER COUNTY COMMENTS
 6/26/90 REVISED PER COUNTY COMMENTS
 8/1/90 FIRST SUBMITTAL TO COUNTY

public storage inc.
 1050 GRANDVIEW AVENUE
 GLENDALE, CALIFORNIA 91201-5050
 (703) 777-9822

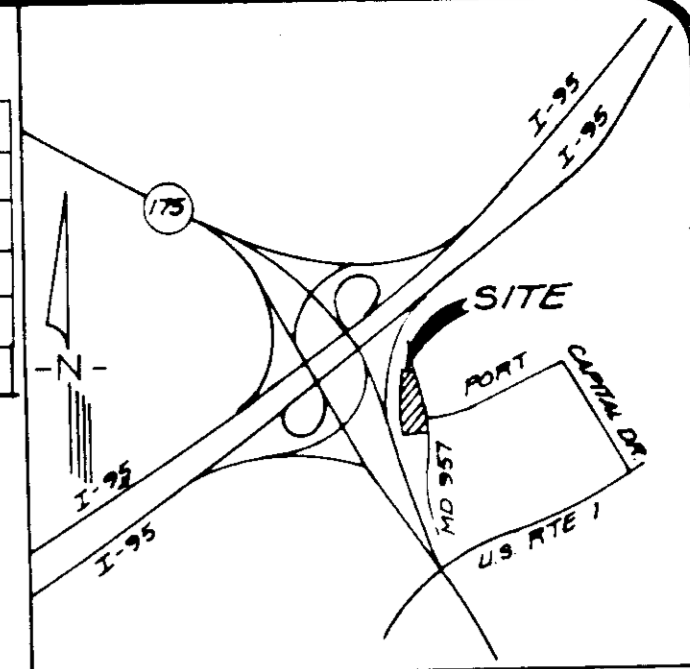
kamber engineering, inc.
 environmental
 4707 EISENHOWER AVENUE
 ALEXANDRIA, VIRGINIA 22304
 (301) 640-1030

5 of 11

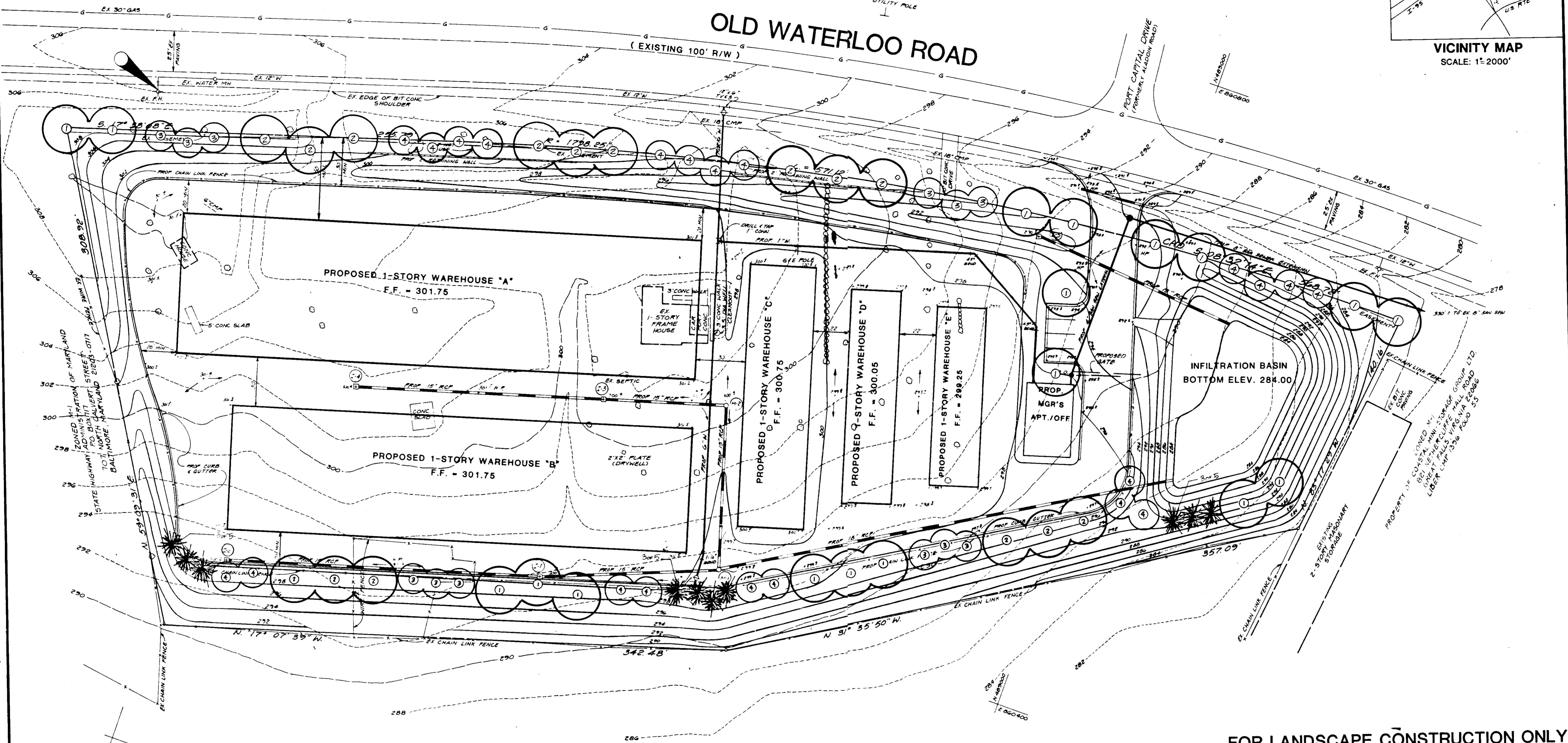
BENCH MARK
NO. 14 - CUT TOP ROADSIDE BOWMET
BOLT OF FIRE HYDRANT -
ELEVATION 306.25

PLANT SCHEDULE

QUANT.	KEY	BOTANICAL NAME	COMMON NAME	SIZE	REMARKS
10	1	PLATANUS ACERIFOLIA 'BLOODGOOD'	LONDON PLANETREE	2 1/2" CAL	B+B
15	2	ACER PLATANOIDES 'SUMMERGLADE'	NORWAY MAPLE	2 1/2" CAL	B+B
12	3	PYRUS CALLERYANA 'BRADFORD'	BRADFORD PEAR	2 1/2" CAL	B+B
21	4	PRUNUS SERRULATA 'KWAHZZAN'	KWANZAN CHERRY	2 1/2" CAL	B+B
9	5	PINUS STROBUS	WHITE PINE	6" HT	B+B



VICINITY MAP
SCALE: 1" = 2000'



APPENDIX B - PLANTING SPECIFICATIONS AND MATERIALS

- I. GUARANTEE
 - A. Guarantee plant material to remain alive and be in health, vigorous condition for a period of one (1) year after completion and acceptance of project by the owner.
- II. MATERIALS
 - A. Plants: Provide plants typical of their species or variety, with normal, densely-developed branches and vigorous, fibrous root systems. Provide only sound, healthy, vigorous plants free from defects, disfiguring marks, wounds, insect damage, frost cracks, abrasions of the bark, plant diseases, insect eggs, borers, and other forms of infestation.
 - (1) Dig balled and burlapped plants with firm, natural balls of earth of sufficient diameter and depth to encompass the fibrous and feeding root system necessary for full recovery of the plant.
 - (2) Bare-root plants: Dig with adequate fibrous roots, covered with a uniformly thick coating of mulch by being patted immediately after they are dug, or patted in moist straw or peat moss.
 - (3) Container-grown stock: Grown in a container for sufficient length of time for the root system to have developed to hold its soil together, firm and whole.
 - (4) The height of the trees, measured from the crown of the roots to the top of the top branch, shall not be less than the minimum size designated in the plant list.
 - B. Topsoil for Planting Beds: will be provided by the Landscape Contractor.
 - C. Peat Moss: Brown to black in color, weed and seed free granulated peat or baled peat, containing not more than 3% moisture on a dry basis.

- III. MATERIALS - (Continued)
 - D. Fertilizer: plant fertilizer Type "0", Commercial type approved by the owner's representative, containing 12% nitrogen, 12% phosphate acid, and 12% potash by weight. One-fourth of nitrogen in the form of nitrates, 1/2 in form of ammonia salt, and 1/2 in form of organic nitrogen. Existing topsoil shall be tested and type and quality of fertilization provided as required. Plant Fertilizer Type "0": Approved acid-base fertilizer, for example, Holly-Tone.
 - E. Mulch: 4 mesh old well rotted shredded native hardwood sawdust, not larger than 1/2" in length and 3/8" width, free of woodchips and sawdust.
 - (1) Stakes for Staking: hardwood, 2"x2"x8'-0" long.
 - (2) Guying/Staking Wire: Number 10 or 12 gauge galvanized, or soft steel ungalvanized wire.
 - (3) Tree Wraps: Standard waterproof tree wrapping paper, 2 1/2" wide, made of 2 layers of green quilt paper weighing not less than 30 pounds per ream, cemented together with asphaltic or tar-like tree wrap.
 - (4) Twine: Two ply jute material.
- IV. INSTALLATION
 - A. Set plant material in the planting pit to proper grade and alignment. Set plants upright, plumb, and facing to give the best appearance or relationship to existing or proposed structures. See plant schedule for above the finish grade. Excavate the pit with planting material. Do not use frozen or muddy material for backfilling.
 - B. Dig balled and burlapped plants into pits, burlap and mulch material around trunk and soil. Do not use sawdust.

- III. INSTALLATION - (Continued)
 - C. Space ground cover plants in accordance with indicated dimensions. Adjust spacing as necessary to evenly fill planting bed indicated quantity of plants.
 - D. Mulching: Mulch tree and shrub planting pits and shrub beds with required mulching material, 3" deep immediately after planting. Thoroughly water mulched areas.
 - E. Staking: Stake all trees immediately after installation, and prior to acceptance.
- IV. DRAINAGE
 - (1) Final grade areas to be seeded, mowed, and level, tilling in fertilizer and lime as recommended by soil test. Patch for proper drainage (see site engineering plans).
 - (2) See also with a mixture of 50% Baron Kentucky Bluegrass, 30% Jamestown Clover, and 20% Orchard Grass. Seed at a rate of 4 pounds per 1000 square feet, or prepared seed beds. Water with salt free.
- V. CLEANING
 - (1) Construction debris shall be removed from the site and disposed of in accordance with applicable regulations.

FOR LANDSCAPE CONSTRUCTION ONLY

THE LAND PLANNING & DESIGN GROUP, INC.
15861 CRABBS BRANCH WAY
ROCKVILLE, MARYLAND 20855
(301)840-9855
LAND PLANNING & ZONING · SITE PLANNING · LANDSCAPE ARCHITECTURE

Handwritten signature: Stuart W. Spalding

OWNER INTERNATIONAL REALTY FUND NO. 2 1050 GRANDVIEW AVENUE GLENDALE, CALIFORNIA 91201-5050	PROJECT PUBLIC STORAGE INC. 0611 OLD WATERLOO ROAD PSI No. 0611 1ST ELECTION DISTRICT, HOWARD COUNTY, MARYLAND
DEVELOPER/CONTRACT PURCHASER PUBLIC STORAGE INC. 4707 EISENHOWER AVENUE ALEXANDRIA, VIRGINIA 22304	LOCATION 1ST ELECTION DISTRICT, HOWARD COUNTY, MARYLAND TAX MAP 48, PARCEL 123 C.M.P. 1844 FOLIO 888
TITLE LANDSCAPE PLAN	
IMPROVEMENTS	
DATE MARCH 1987	SCALE 1" = 30'

APPROVED: FOR PUBLIC WATER AND PUBLIC SEWERAGE SYSTEMS HOWARD COUNTY HEALTH DEPARTMENT <i>John J. ...</i> 6-26-91	DATE
COUNTY HEALTH OFFICER	DATE
AFFECTED: HOWARD COUNTY DEPT. OF PLANNING & ZONING <i>W.C. ...</i> 7/26/90	DATE
DIRECTOR	DATE
CHIEF DIVISION OF LAND DEVELOPMENT AND ZONING ADMINISTRATION <i>...</i> 7/3/90	DATE
APPROVED: FOR PUBLIC WATER AND PUBLIC SEWERAGE STORM DRAINAGE SYSTEMS AND PUBLIC ROADS HOWARD COUNTY DEPARTMENT OF PUBLIC WORKS <i>...</i> 6/20/90	DATE
DIRECTOR	DATE
CHIEF BUREAU OF ENGINEERING <i>...</i>	DATE

DATE	BY
3/87	MSI/JCS
87084.00	PEB

NO.	DATE	DESCRIPTION
1	9/22/87	ADD: PLANS, COUNTY COMMISSIONS
2	12/22/87	REVISED PER COUNTY COMMISSIONS
3	1/19/88	REVISED PER COUNTY COMMISSIONS
4	4/19/90	SITE INDEX ON SHIT. (OF 1); SUB. TO H.C. P. 12
5	8/21/92	FIRST SUBMITTAL TO COUNTY COMMISSIONS
6	8/21/92	DATE

PUBLIC STORAGE INC.
OLD WATERLOO ROAD PSI No. 0611
1ST ELECTION DISTRICT HOWARD COUNTY, MARYLAND
LANDSCAPE PLAN

kamber engineering, inc.
101 Chestnut Street
Baltimore, Maryland 20877
(301) 840-1030

SDP 90.94

NOTIFY "MISS UTILITY" AT
1-800-257-7777
FOR UTILITY LOCATION
48 HOURS PRIOR TO ANY
CONSTRUCTION OR EXCAVATION

SOIL CONSERVATION SERVICE
MARYLAND
CONSTRUCTION SPECIFICATIONS
FOR
PONDS

These specifications are appropriate for ponds within the scope of the Standard for practice 378.

I. SITE PREPARATION

Areas designated for borrow areas, embankment, and structural works shall be cleared, grubbed and stripped of topsoil. All trees, vegetation, roots and other objectionable material shall be removed. Channel banks and sharp breaks shall be sloped to no steeper than 1:1.

Areas to be covered by the pond or reservoir will be cleared of all trees, brush, logs, fences, rubbish, wood, rubbish, oversize stones, frozen or other objectionable materials. The embankment shall be constructed to an elevation which provides for anticipated settlement to the design elevation. The fill height at all along the length of the embankment shall be increased above the design elevation (including embankment) as shown on the plans.

All cleared and grubbed material shall be disposed of outside and below the limits of the dam and reservoir as directed by the owner or his representative. When specified, a sufficient quantity of topsoil will be stockpiled in a suitable location for use on the embankment and other designated areas.

II. EARTH FILL

Material

The fill material shall be taken from approved designated borrow area or areas. It shall be free of roots, stumps, wood, rubbish, oversize stones, frozen or other objectionable materials. The fill shall be placed in horizontal layers not to exceed four inches in thickness and compacted by hand tampers or other compaction equipment. The material needs to fill completely all spaces under and adjacent to the pipe. At no time during the backfilling operation shall driven equipment be allowed to operate closer than four feet, measured horizontally, to any part of a structure. Under no circumstances shall equipment be driven over any part of a concrete structure or pipe unless there is a compacted fill of twenty-four inches or greater over the structure or pipe.

Where a minimum required density is specified, each layer of fill shall be compacted as necessary to obtain that density and is to be certified by the Engineer.

Compaction

The movement of the hauling and spreading equipment over the fill shall be controlled so that the entire surface of each lift shall be traversed by not less than one tread track of the equipment or compaction shall be achieved by a minimum of four complete passes of a tractor, roller, rubber tires or vibratory roller. Fill material shall contain sufficient moisture such that the required degree of compaction can be obtained with the equipment used.

Where a minimum required density is specified, each layer of fill shall be compacted as necessary to obtain that density and is to be certified by the Engineer.

III. STRUCTURAL BACKFILL

Backfill material shall be of the type and quality conforming to that specified for the adjoining fill material. The fill shall be placed in horizontal layers not to exceed four inches in thickness and compacted by hand tampers or other compaction equipment. The material needs to fill completely all spaces under and adjacent to the pipe. At no time during the backfilling operation shall driven equipment be allowed to operate closer than four feet, measured horizontally, to any part of a structure. Under no circumstances shall equipment be driven over any part of a concrete structure or pipe unless there is a compacted fill of twenty-four inches or greater over the structure or pipe.

IV. PIPE CONDUITS

All pipes shall be circular in cross section.

A. Corrugated Metal Pipe

1. Materials - (Steel Pipe) - This pipe and its appurtenances shall be galvanized and fully bituminous coated and shall conform to the requirements of AASHTO Specification M-190 Type A with watertight coupling bands. Any bituminous coating damaged or otherwise removed shall be replaced with cold applied bituminous coating compound. Steel pipes with polymeric coatings shall have a minimum coating thickness of 0.01 inch (10 mil) on both sides of the pipe. The following coatings are commercially available: Nexon, Plast-Coat, Silar-Klad, and Bach-Cor-Lap. Coated corrugated steel pipe shall meet the requirements of AASHTO M-245 and M-246.

Materials - (Aluminized Steel Pipe) - This pipe and its appurtenances shall conform to the requirements of AASHTO Specification M-274-791 with watertight coupling bands or flanges.

Materials - (Aluminum Pipe) - This pipe and its appurtenances shall conform to the requirements of AASHTO Specification M-195 or M-211 with watertight coupling bands or flanges. Coupling bands, anti-seep collars, end sections, etc. must be composed of the same material as the pipe. Metals must be insulated from dissimilar materials with use of rubber or plastic insulating materials at least 24 mils in thickness. Aluminum surfaces that are to be in contact with concrete shall be painted with one coat of zinc chromate primer. Hot dip galvanized bolts may be used for connections. The pH of the surrounding soils shall be less than 9 and greater than 4.

2. Connections - All connections with pipes must be completely watertight. The drain pipe or barrel connection to the riser shall be welded all around when the pipe and riser are metal. Watertight coupling bands or flanges shall be used at all joints. Anti-seep collars shall be connected to the pipe in such a manner as to the completely watertight. Disipie bands are not considered to be watertight.

3. Bedding - The pipe shall be firmly and uniformly bedded throughout its entire length. Where rock or soft, spongy or other unstable soil is encountered, all such material shall be removed and replaced with suitable earth compacted to provide adequate support.

4. Laying pipe - The pipe shall be placed with inside circumferential lap pointing downstream and with the longitudinal lap at the sides.

5. Backfilling shall conform to structural backfill as shown above.

6. Other details (anti-seep collars, valves, etc.) shall be as shown on the drawings.

B. Reinforced Concrete Pipe

1. Materials - Reinforced concrete pipe shall have a rubber gasket joint and shall equal or exceed ASTM Specification C-351. An approved equivalent is AWA Specification C-351.

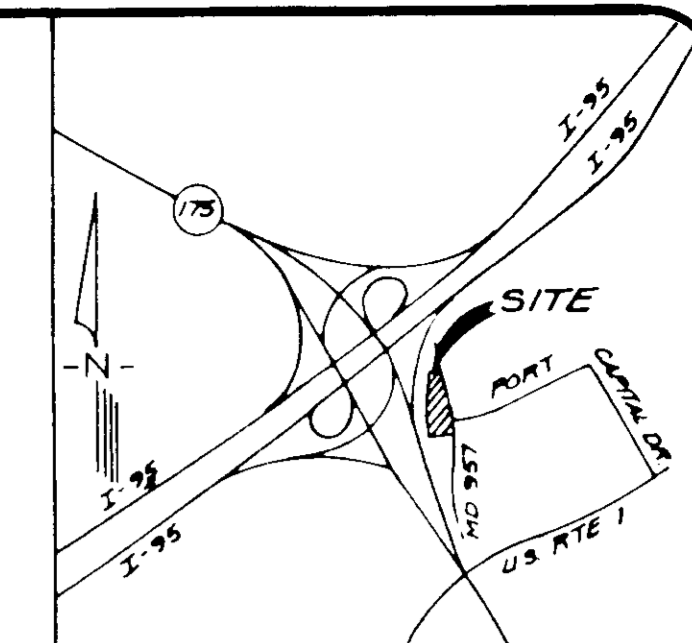
2. Bedding - All reinforced concrete pipe conduits shall be laid in a concrete bedding for their entire length. This bedding shall consist of high slump concrete placed under the pipe and up the sides of the pipe at least 1/2 of its outside diameter with a minimum thickness of 3" or as shown on the drawings.

3. Laying pipe - Bell and spigot pipe shall be placed with the bell end upstream. Joints shall be made in accordance with the recommendations of the manufacturer of the material. After the joints are sealed for the entire line, the bedding shall be placed so that all spaces under the pipe are filled. Care shall be exercised to prevent any deviation from the original line and grade of the pipe.

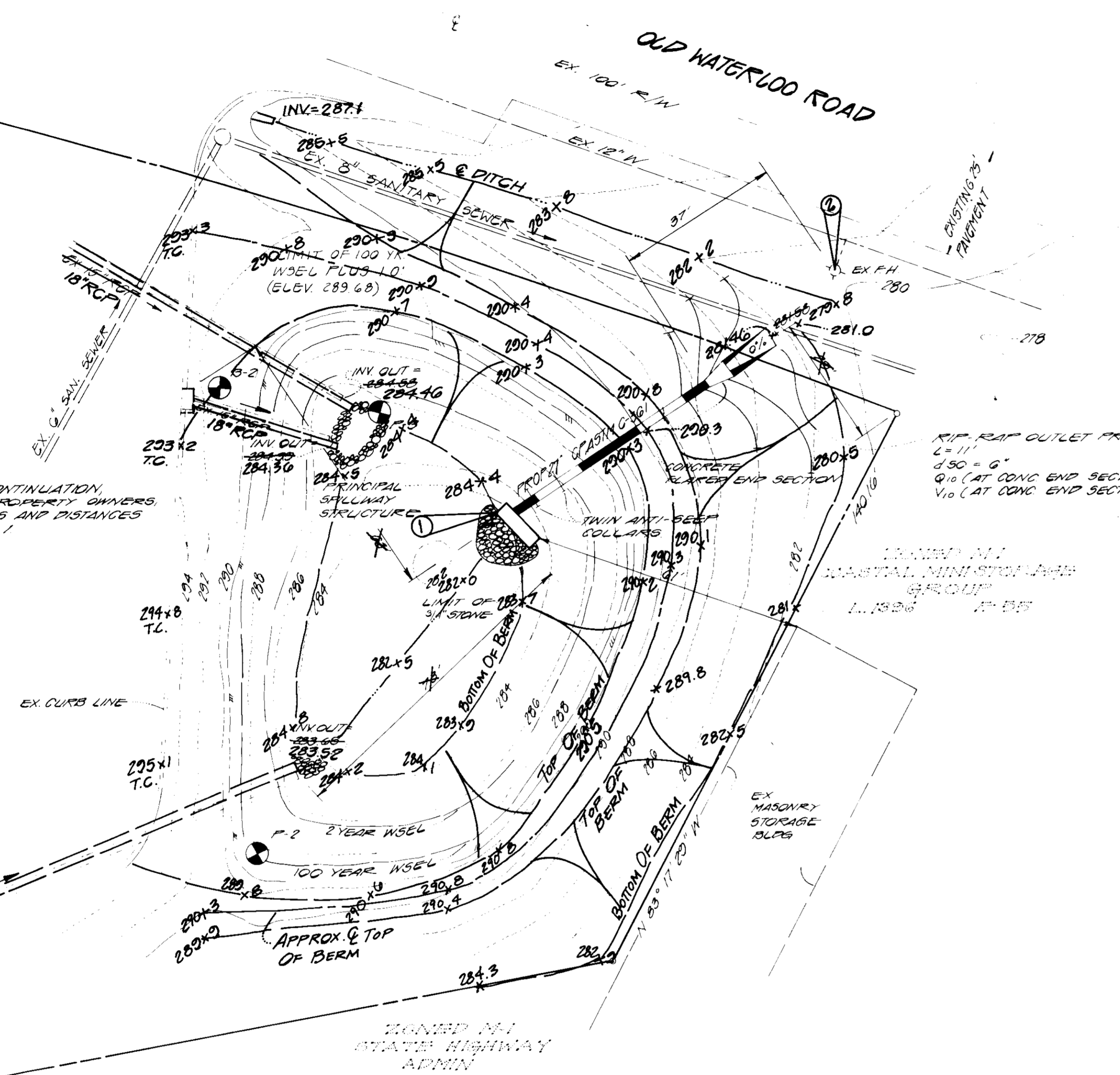
4. Backfilling shall conform to structural backfill as shown above.

5. Other details (anti-seep collars, valves, etc.) shall be as shown on the drawings.

6. For pipes of other materials, specific specifications shall be shown on the drawings.



VICINITY MAP
SCALE: 1"=2000'



PLAN VIEW
SCALE: 1"=20'

BENCH MARK # 1
"L" TOP OF SWM RISER
@ NW COR.
ELEV. = 280.6

BENCH MARK # 2
BONNET BOLT OVER STEAMER
CONN. ON FIRE HYDRANT
ELEV. = 283.86

THESE PLANS HAVE BEEN REVIEWED FOR THE HOWARD SOIL CONSERVATION DISTRICT AND MEET THE TECHNICAL REQUIREMENTS FOR SOIL CONSERVATION DISTRICT. SOIL EROSION AND SEDIMENT CONTROL.
[Signature] DATE 5/1/90
SOIL CONSERVATION SERVICE

THESE PLANS FOR SMALL POND CONSTRUCTION, SOIL EROSION AND SEDIMENT CONTROL, MEET THE REQUIREMENTS OF THE HOWARD SOIL CONSERVATION DISTRICT.
[Signature] DATE 5/1/90
SOIL CONSERVATION SERVICE

APPROVED: FOR PUBLIC WATER AND PUBLIC SEWERAGE SYSTEMS, HOWARD COUNTY HEALTH DEPARTMENT.
[Signature] DATE 6/26/91

APPROVED: HOWARD COUNTY DEPT. OF PLANNING & ZONING
[Signature] DATE 7/26/90
DIRECTOR

APPROVED: FOR PUBLIC WATER AND PUBLIC SEWERAGE, STORM DRAINAGE SYSTEMS AND PUBLIC ROADS, HOWARD COUNTY DEPARTMENT OF PUBLIC WORKS
[Signature] DATE 6/20/90
DIRECTOR



[Signature]
Suzanne Schrepfer

OWNER Institutional Realty Fund No. 2 1015 Grandview Avenue Glendale, California 91201-5050	PROJECT PUBLIC STORAGE INC. OLD WATERLOO ROAD PSI NO. 0611
DEVELOPER/CONTRACT PURCHASER PUBLIC STORAGE, INC. 4707 EISENHOWER AVENUE ALEXANDRIA, VIRGINIA 22304	TITLE STORMWATER MANAGEMENT PLAN
LOCATION 1ST ELECTION DISTRICT, HOWARD COUNTY, MARYLAND TAX MAP 43, PARCEL 123 C.M.P. 1244 FOLIO 608	REVISIONS TO EX. SWM BASIN
DATE OCT 1989	SCALE A6 SHOWN
SHEET 8 OF 11	

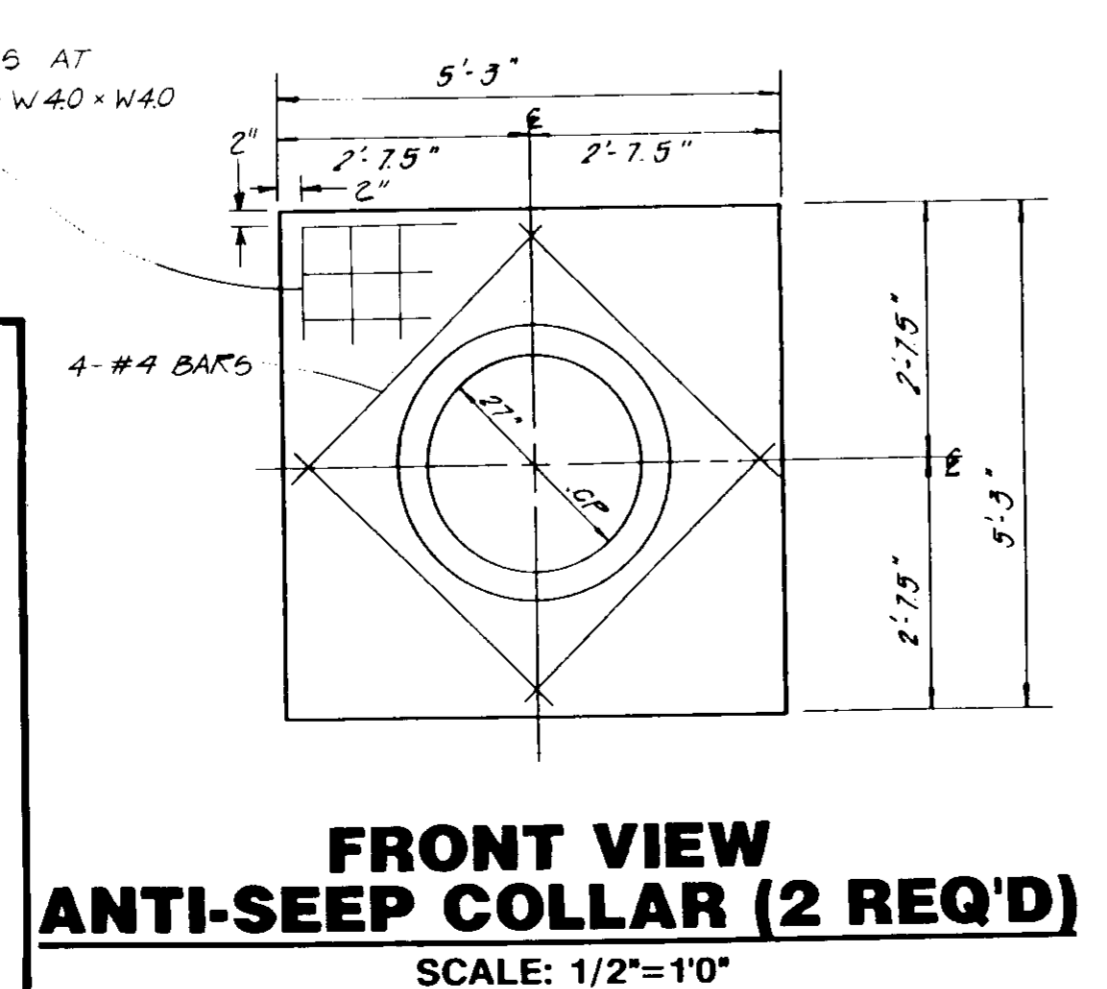
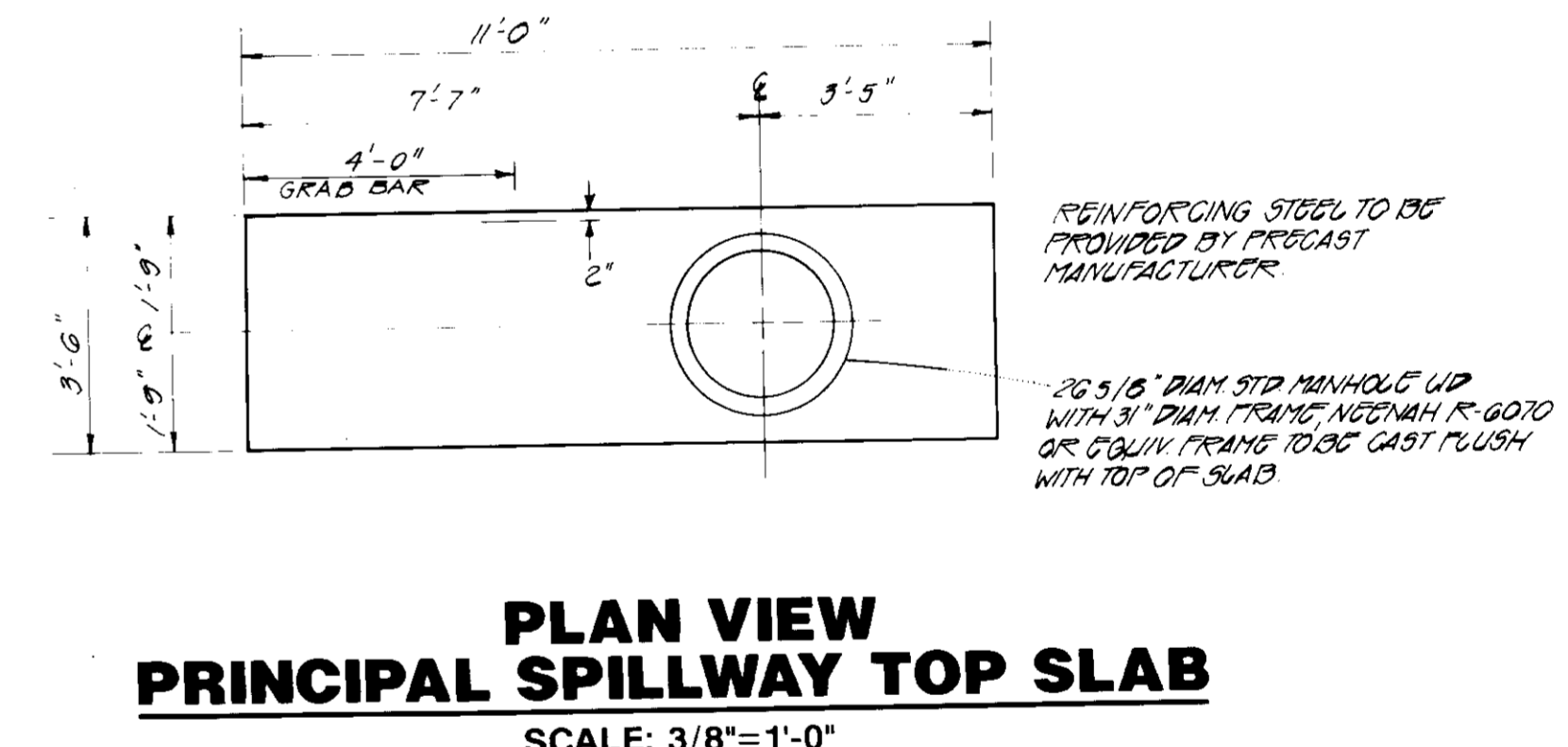
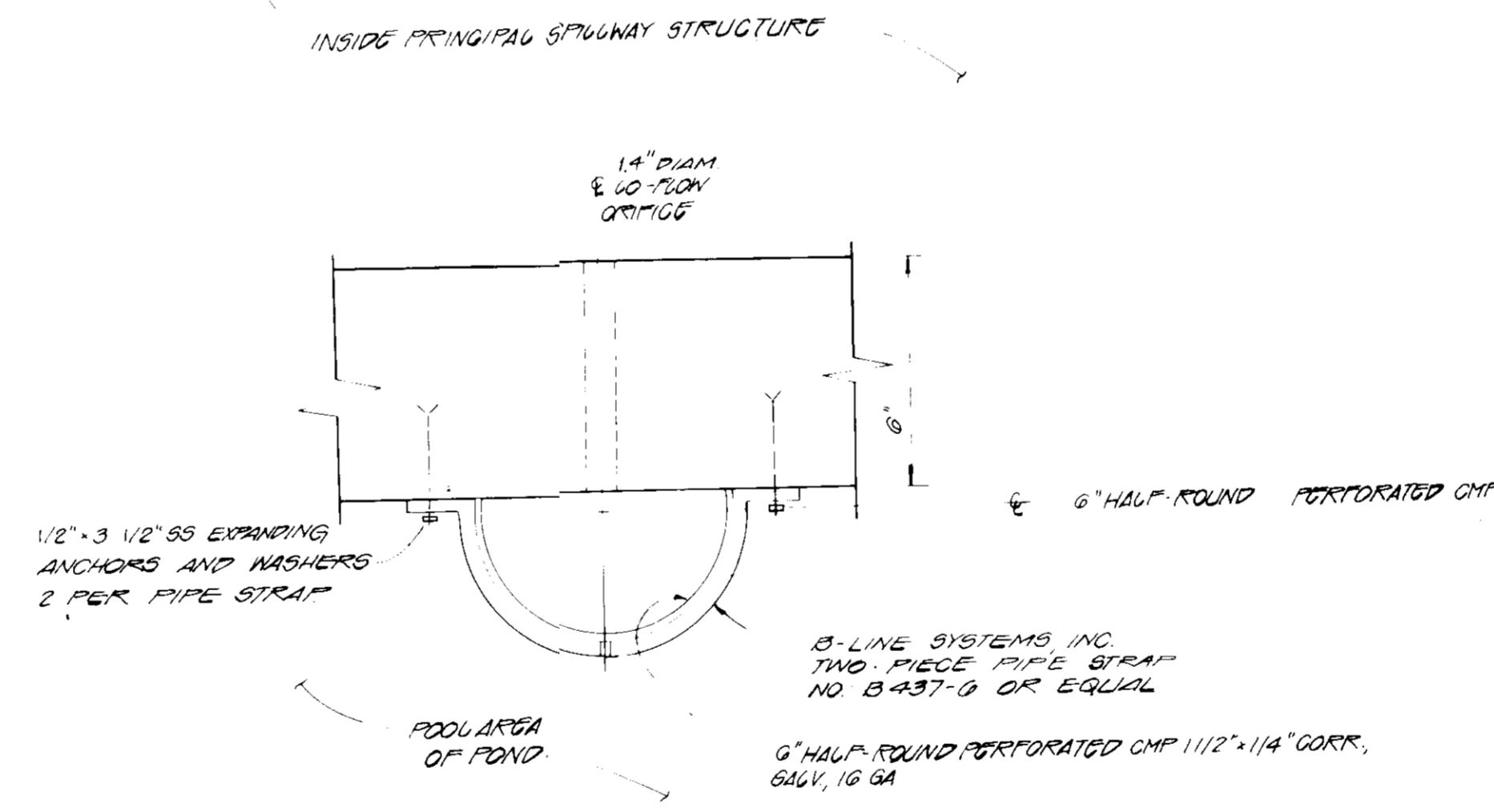
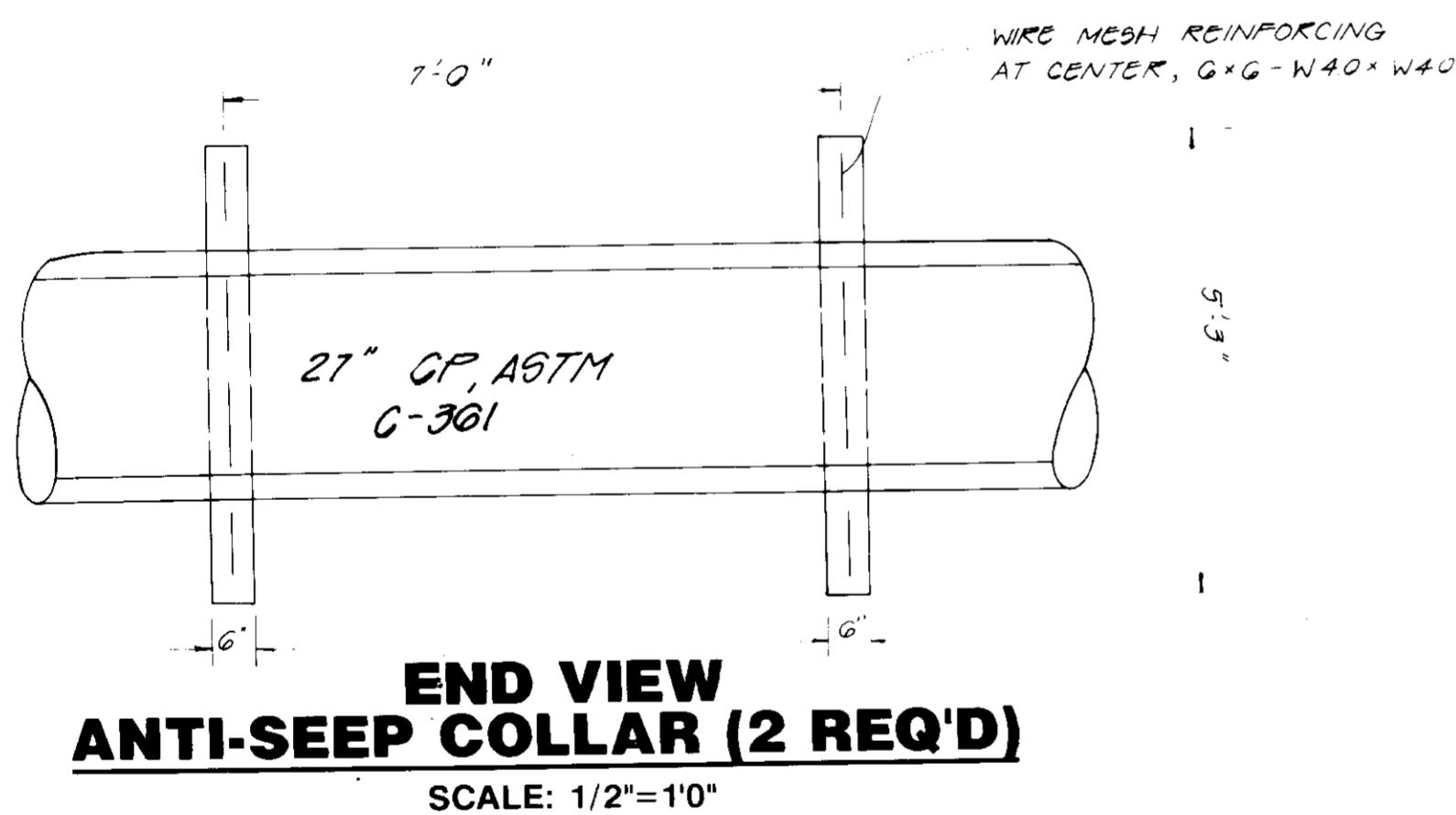
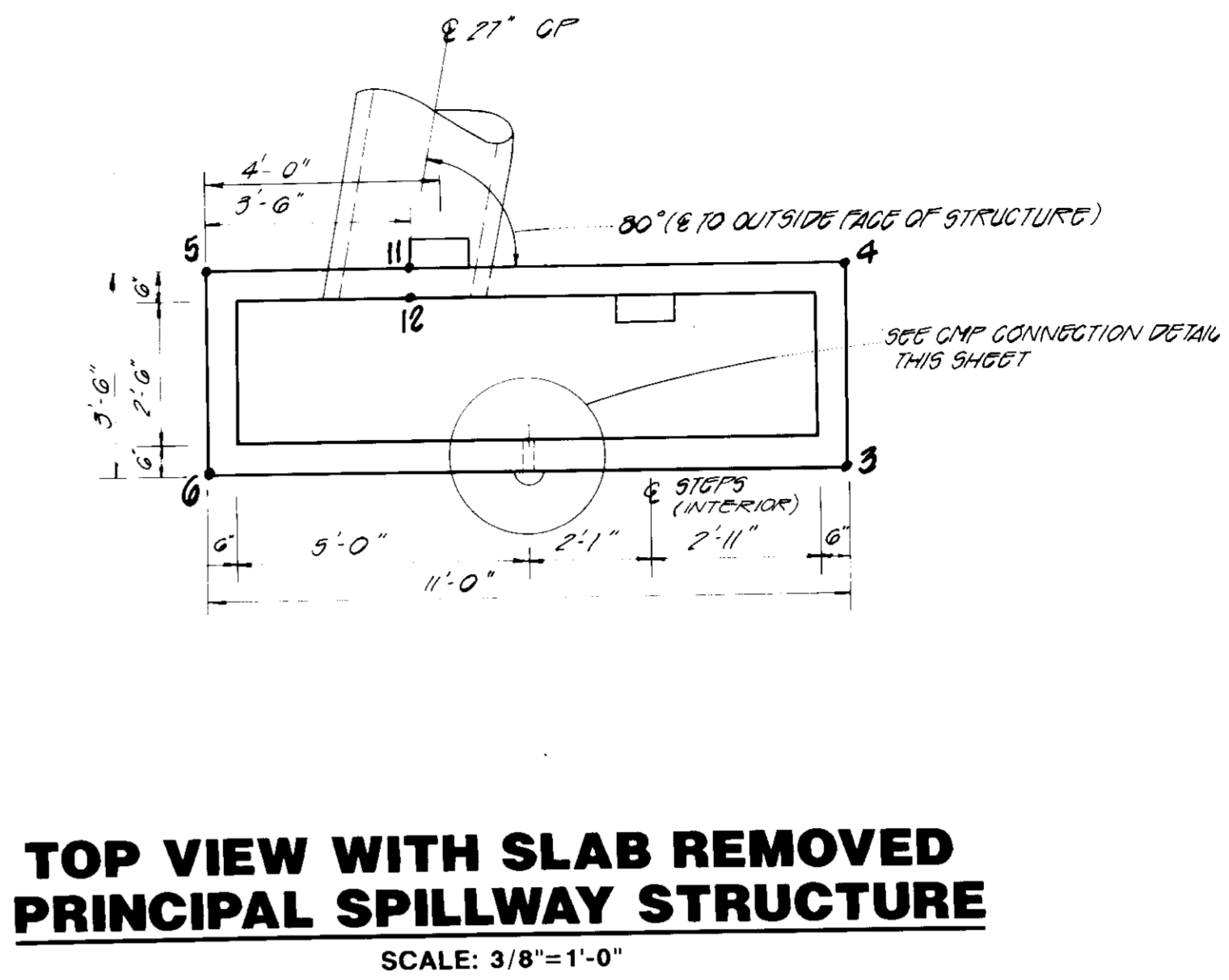
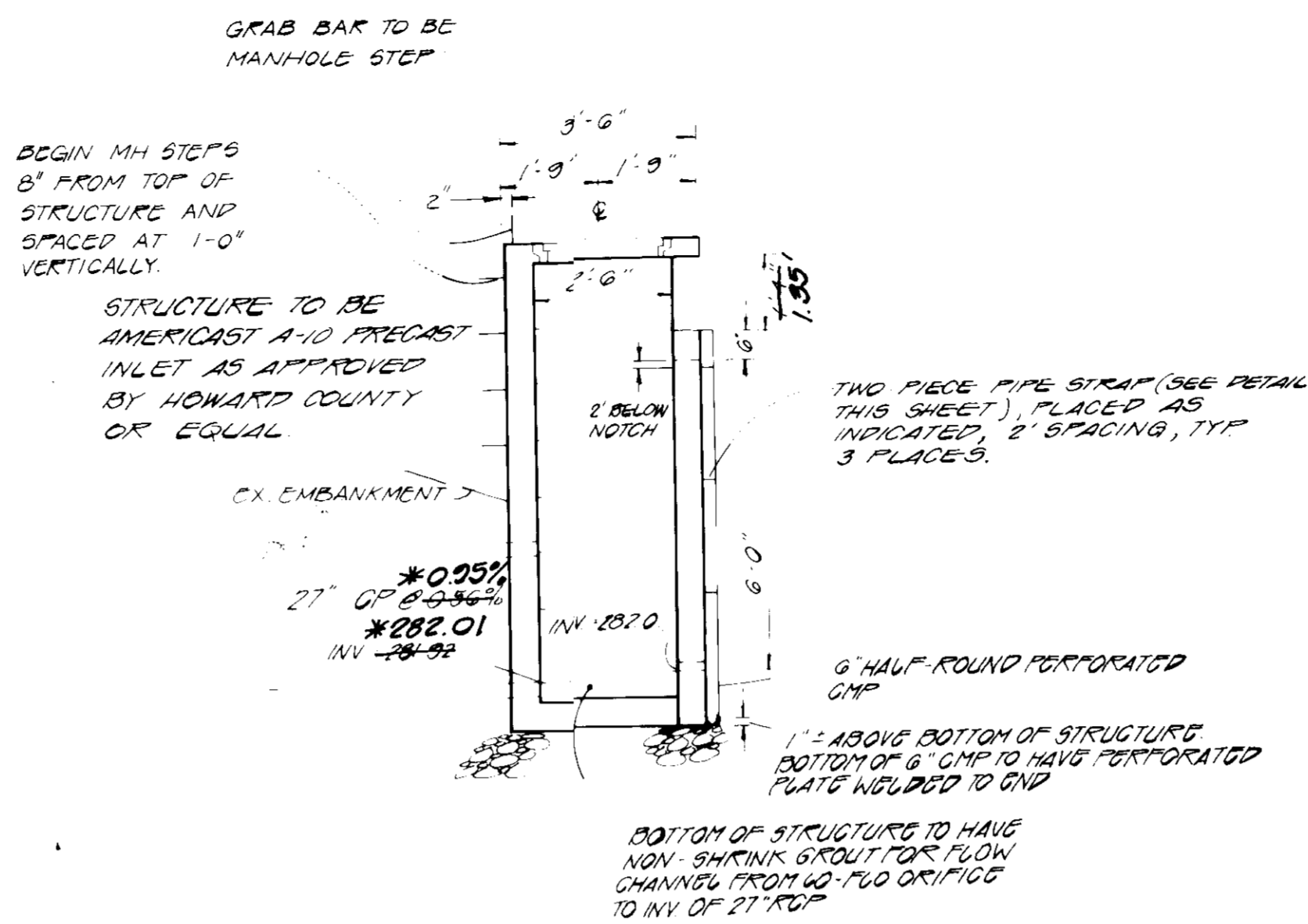
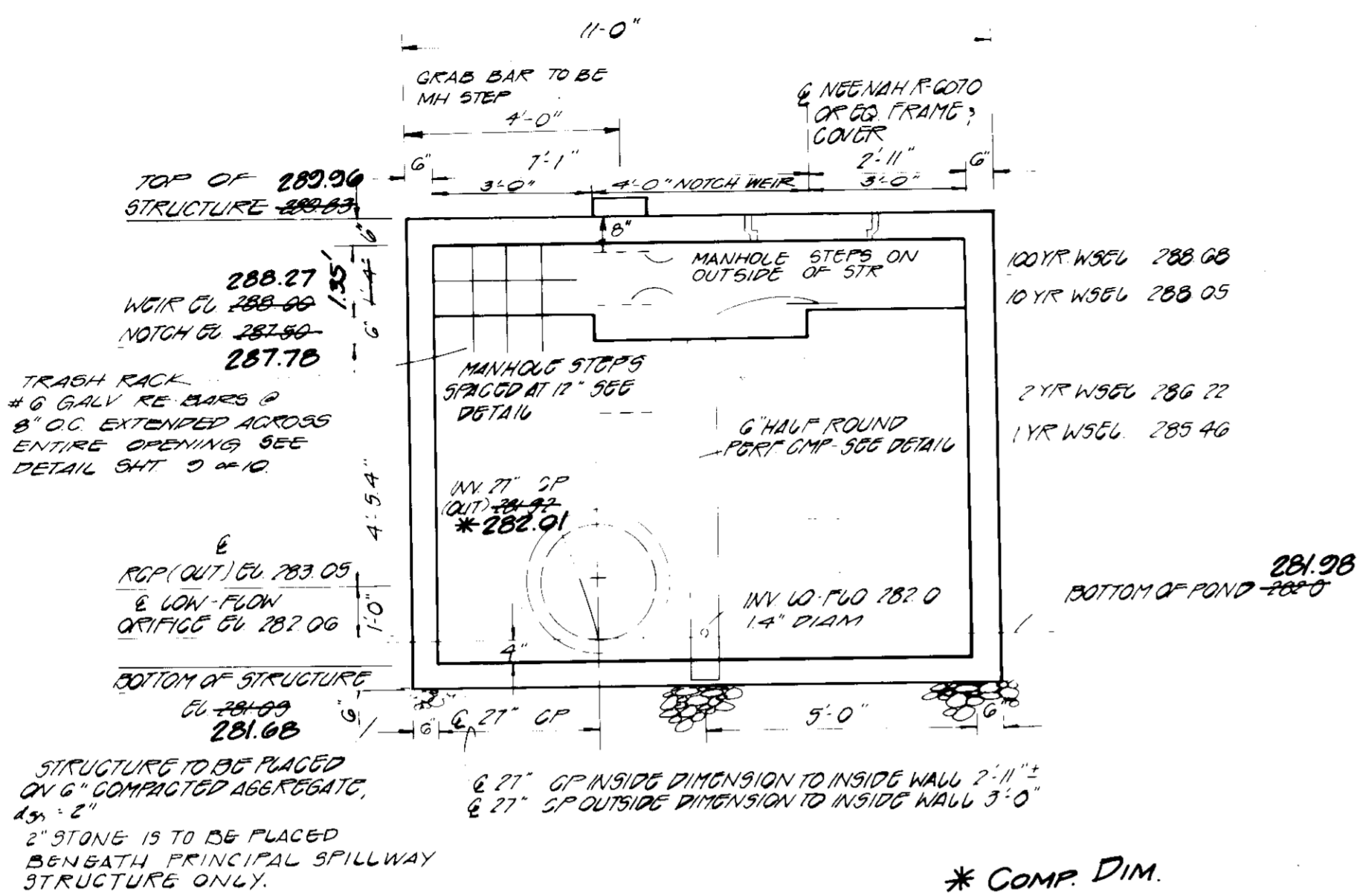
DATE	90117-02	DATE	OCT-89
DESIGN	LEH	APPROVAL	SWS
CHECK	LEB	APPROVAL	AS
REVISIONS		APPROVAL	SHOWN

NO.	DATE	DESCRIPTION
1	10/1/89	AS SHOWN

PUBLIC STORAGE INC
OLD WATERLOO ROAD PSI NO. 0611
1ST ELECTION DISTRICT HOWARD COUNTY, MARYLAND
STORMWATER MANAGEMENT PLAN

kamber engineering
ENVIRONMENTAL
414 W. 37TH ST. DALLAS, TEXAS 75219
(214) 841-0300

SDP-90-94



THESE PLANS HAVE BEEN REVIEWED FOR THE HOWARD SOIL CONSERVATION DISTRICT AND MEET THE TECHNICAL REQUIREMENTS FOR SMALL CONSTRUCTION, SOIL EROSION AND SEDIMENT CONTROL.

DATE: 5-1-90

DATE: 5/1/90

APPROVED: FOR PUBLIC WATER AND PUBLIC SEWERAGE SYSTEMS, HOWARD COUNTY HEALTH DEPARTMENT

DATE: 6-26-90

APPROVED: HOWARD COUNTY DEPT. OF PLANNING & ZONING

DATE: 7/26/90

DATE: 7/13/90

APPROVED: FOR PUBLIC WATER AND PUBLIC SEWERAGE, STORM DRAINAGE SYSTEMS AND PUBLIC ROADS, HOWARD COUNTY DEPARTMENT OF PUBLIC WORKS

DATE: 8/20/90

DATE: 8/20/90

OWNER Institutional Realty Fund No. 2 1015 Grandview Avenue Glendale, California 91201-5050	PROJECT PUBLIC STORAGE INC. OLD WATERLOO ROAD PSI No. 0611
	LOCATION 1ST ELECTION DISTRICT, HOWARD COUNTY, MARYLAND TAX MAP 43, PARCEL 123 C.M.P. 1244 FOLIO 588
DEVELOPER/CONTRACT PURCHASER PUBLIC STORAGE, INC. 4707 EISENHOWER AVENUE ALEXANDRIA, VIRGINIA 22304	TITLE STORMWATER MANAGEMENT PLAN
IMPROVEMENTS	
DATE: OCT 1989	SCALE: AS SHOWN
SHT. 10 OF 11	

DATE	06-01-89
PROJECT	90117-02
ILLUSTRATION	LEFT
SCALE	AS SHOWN
APPROVAL	SHOWN

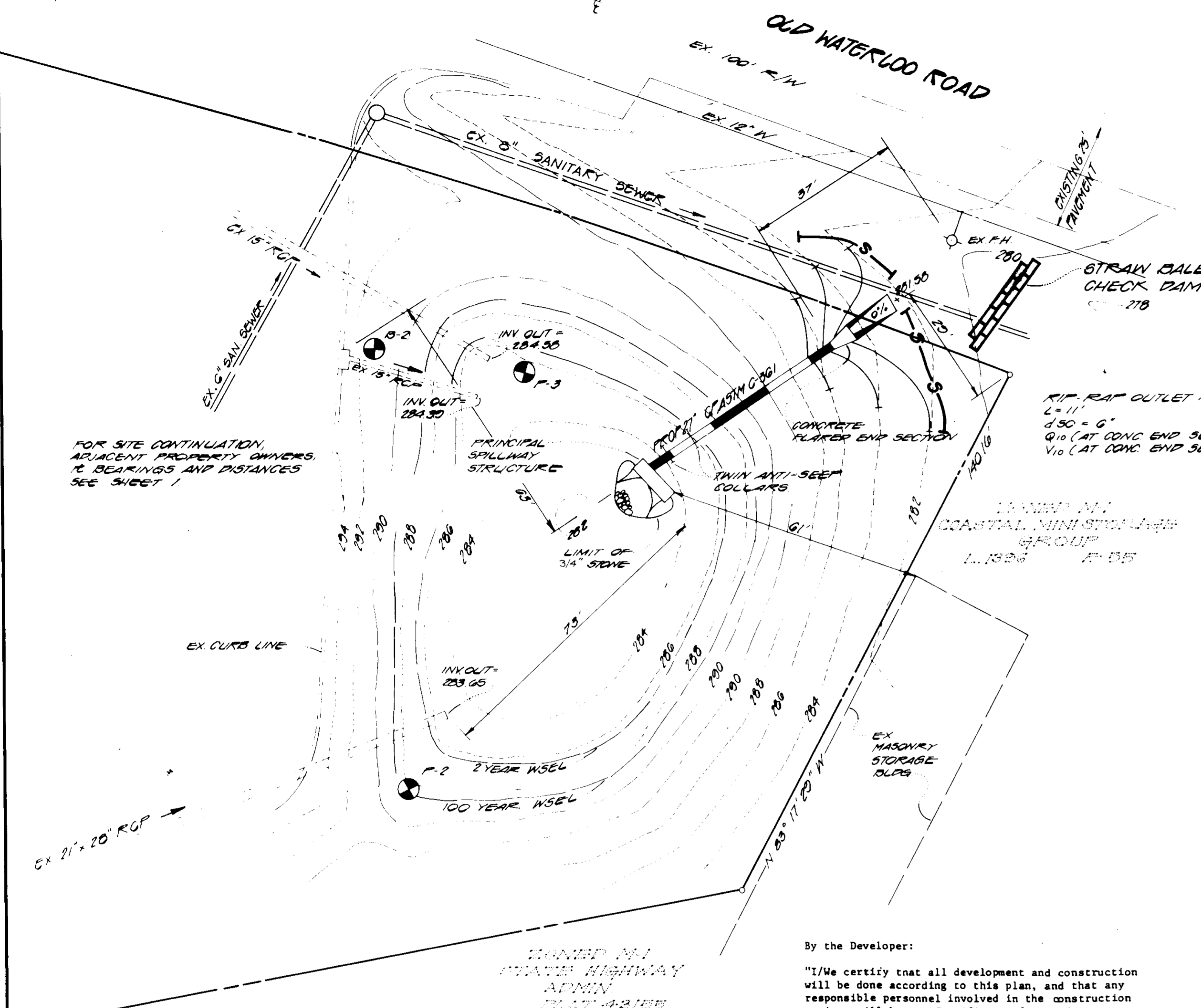
DATE	06-27-89
PROJECT	90117-02
ILLUSTRATION	LEFT
SCALE	AS SHOWN
APPROVAL	SHOWN

AS BUILT

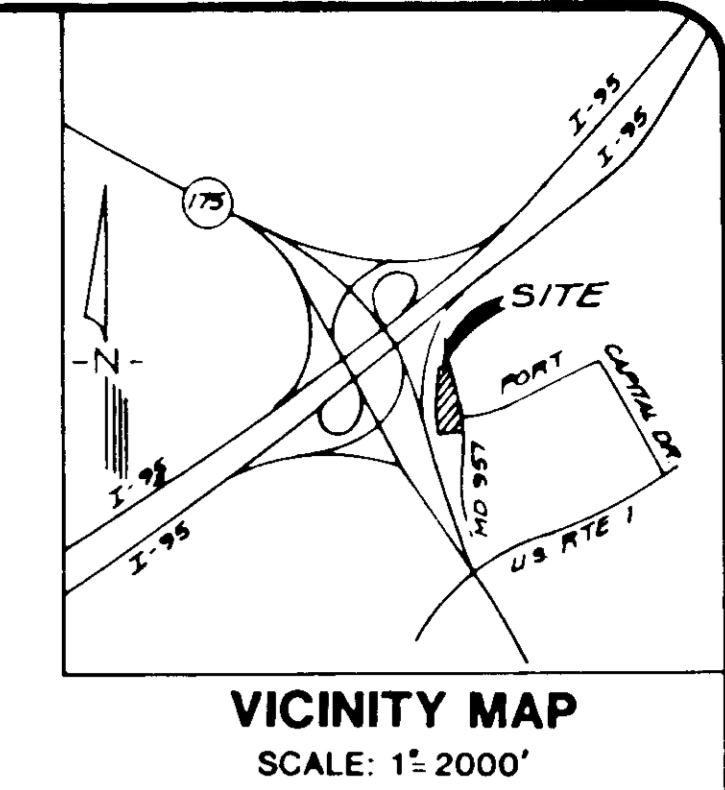
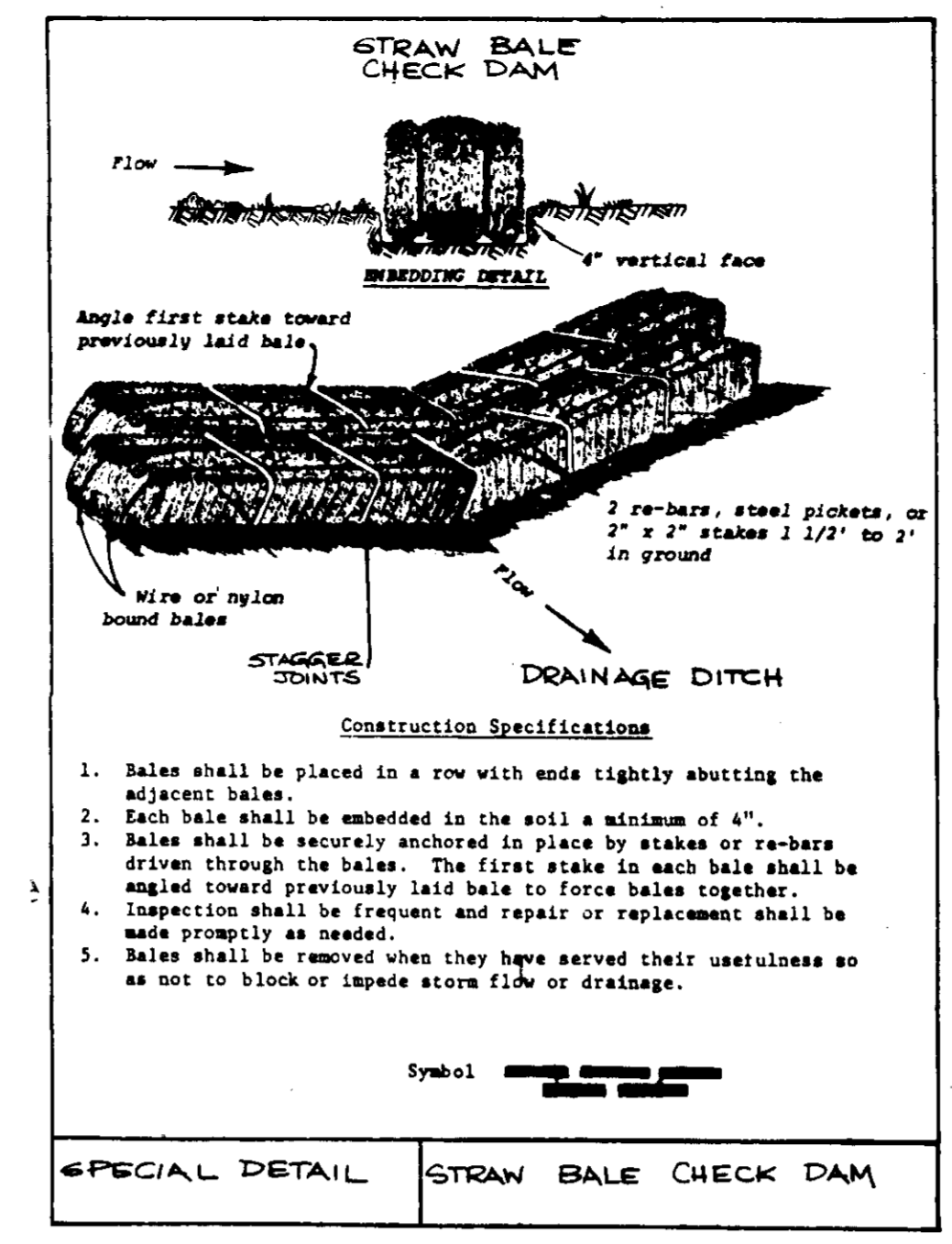
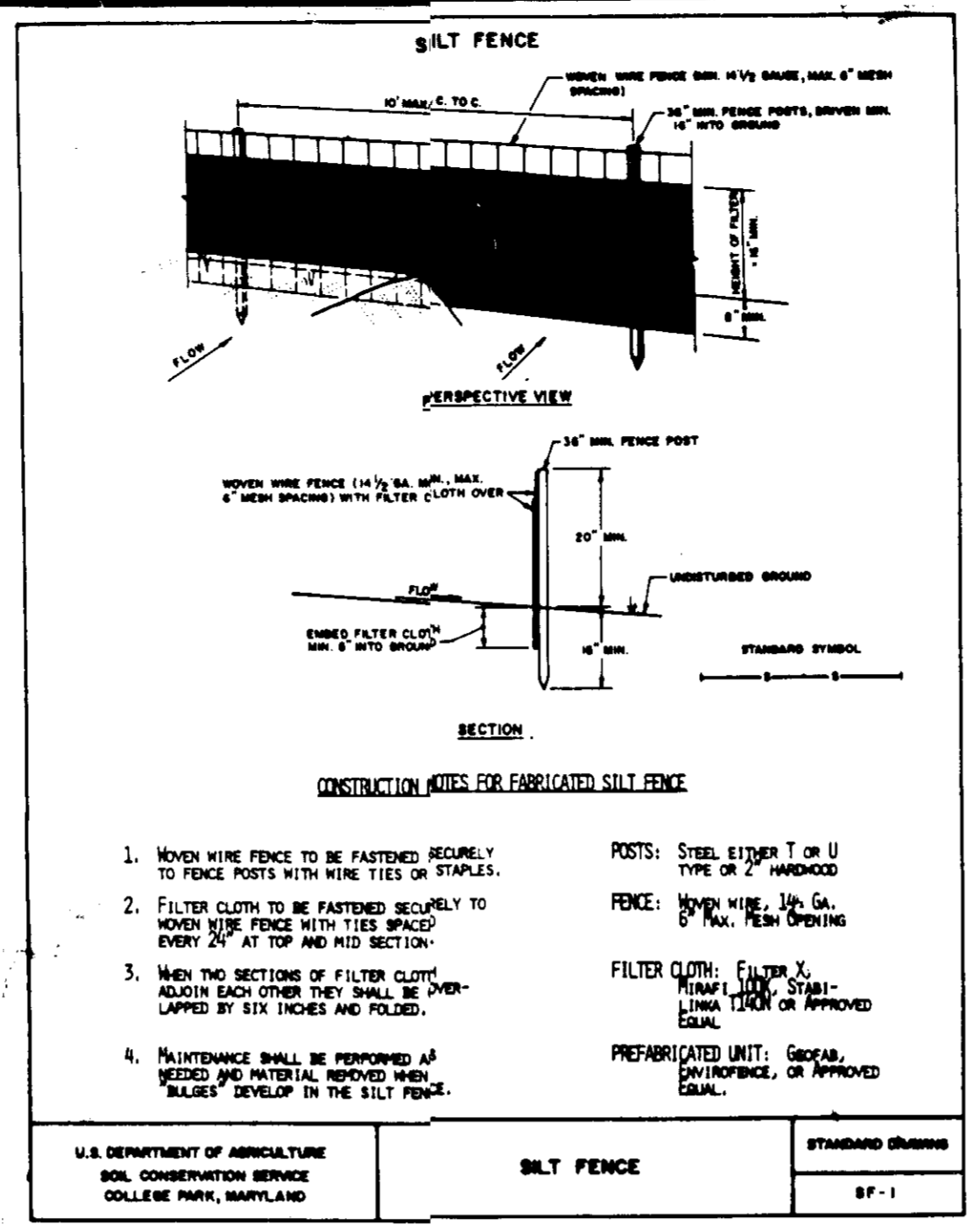
PUBLIC STORAGE INC.
OLD WATERLOO ROAD PSI No. 0611
1ST ELECTION DISTRICT HOWARD COUNTY, MARYLAND
STORMWATER MANAGEMENT PLAN

kamber engineering
environmental
818 w diamond ave
gathersburg md 20878
(301) 840-1030

NOTIFY "MISS UTILITY" AT
1-800-257-7777
FOR UTILITY LOCATION
48 HOURS PRIOR TO ANY
CONSTRUCTION OR EXCAVATION



PLAN VIEW
SCALE: 1"=20'



SEDIMENT CONTROL NOTES

- A minimum of 24 hours notice must be given to the Howard County Office of Inspection and Permits prior to the start of any construction. (992-2437)
- All vegetative and structural practices are to be installed according to the provisions of this plan and are to be in accordance with the 1983 MARYLAND STANDARDS AND SPECIFICATIONS FOR SOIL EROSION AND SEDIMENT CONTROL.
- Following initial soil disturbance or redistribution, permanent or temporary stabilization shall be completed within: a) 7 calendar days for all perimeter sediment control structures, dikes, perimeter slopes and all slopes greater than 2:1, b) 14 days as to all other disturbed or graded areas on the project site.
- All sediment traps/basins shown must be fenced and warning signs posted around chain perimeter in accordance with Vol. 1, Chapter 12, of the HOWARD COUNTY DESIGN MANUAL, Storm Drainage.
- All disturbed areas must be stabilized within the time period specified above in accordance with the 1983 MARYLAND STANDARDS AND SPECIFICATIONS FOR SOIL EROSION AND SEDIMENT CONTROL for permanent seedings (Sec. 33) and (Sec. 34), temporary seeding (Sec. 30) and mulching (Sec. 32.) Temporary stabilization with mulch alone can only be done when recommended seeding rates do not allow for proper germination and establishment of grasses.
- All sediment control structures are to remain in place and are to be maintained in operative condition until permission for their removal has been obtained from the Howard County Sediment Control Inspector.
- Site Analysis:
Total Area of Site: 4.5 Acres
Area Disturbed: 2.5 Acres
Area to be roofed or paved: N/A Acres
Area to be vegetatively stabilized: 2.0 Acres
Total Cut: 200 Cu. Yds
Total Fill: 200 Cu. Yds
Offsite waste/borrow area location: N/A
- Any sediment control practice which is disturbed by grading activity for placement of utilities must be repaired on the same day of disturbance.

SEQUENCE OF CONSTRUCTION

- OBTAIN GRADING PERMIT.
- CLEAR AND GRUB AREA NECESSARY FOR INSTALLATION OF STABILIZED CONSTRUCTION ENTRANCE (SCE). INSTALL SCE.
- REMOVE SECTIONS OF EXISTING CHAIN LINK FENCE AS NECESSARY TO ACCOMPLISH THE PROPOSED CONSTRUCTION.
- INSTALL SILT FENCE AND STRAW BALE CHECK DAM.
- EXCAVATE FOR AND INSTALL PRINCIPAL SPILLWAY STRUCTURE AND 27" RCJ BARREL INCLUDING BEDDING, CRADLE, AND AGGREGATE BASE.
- DO NOT CAP 6-INCH CMP AND DO NOT INSTALL 2" AGGREGATE AT THIS TIME.
- BACKFILL BARREL AND COMPACT PER CONSTRUCTION SPECIFICATIONS.
- INSTALL SOIL/BENTONITE MIXTURE PER MANUFACTURERS SPECIFICATIONS, INCLUDING SCARIFICATION OF EXISTING SOIL, ADDING THE MIXTURE AND OVERLAYING WITH SOIL.
- STABILIZE POND BOTTOM AND SIDES AND ALL DISTURBED AREAS PER APPLICABLE SPECS.
- CONSTRUCT RIP RAP OUTLET PROTECTION.
- CLEAN OUT ALL ACCUMULATED SEDIMENT FROM THE PRINCIPAL SPILLWAY STRUCTURE AND BARREL, ENSURING THAT THE LOW FLOW ORIFICE IS FREE OF ALL OBSTRUCTIONS. WASH ACCUMULATED SEDIMENTS FROM FILTER CLOTH AROUND 6-INCH CMP.
- REPLACE FILTER CLOTH IF ANY DETERIORATION OR DAMAGE IS NOTICED.
- INSTALL 2 INCH AGGREGATE AROUND 6 INCH CMP.
- STABILIZE ANY REMAINING DISTURBED AREAS.
- REMOVE ALL SEDIMENT CONTROL DEVICES ONCE RESPECTIVE DRAINAGE AREAS ARE STABILIZE.

By the Developer:
"I/We certify that all development and construction will be done according to this plan, and that any responsible personnel involved in the construction project will have a Certificate of Attendance at a Department of Natural Resources Approved Training Program for the Control of Sediment and Erosion before beginning the project."

Theresa Forde 26 Oct 1989
Signature of Developer
Print name below signature
THESE ARE FOR ME

By the Engineer:
I certify that this plan for erosion and sediment control represents a practical and workable plan based on my personal knowledge of the site conditions and that it was prepared in accordance with the requirements of the Howard Soil Conservation District."

Susan E. Schreyer 4-30-90
Signature of Engineer
Print name below signature
SUSAN E. SCHREYER

THESE PLANS HAVE BEEN REVIEWED FOR THE HOWARD SOIL CONSERVATION DISTRICT AND MEET THE TECHNICAL REQUIREMENTS FOR SMALL POND CONSTRUCTION, SOIL EROSION AND SEDIMENT CONTROL.
DATE: 5-1-90
DATE: 5/1/90

APPROVED: FOR PUBLIC WATER AND PUBLIC SEWERAGE SYSTEMS, HOWARD COUNTY HEALTH DEPARTMENT
DATE: 6-26-90

APPROVED: HOWARD COUNTY, DEPT. OF PLANNING & ZONING
DATE: 7/6/90

APPROVED: FOR PUBLIC WATER AND PUBLIC SEWERAGE, STORM DRAINAGE SYSTEMS AND PUBLIC ROADS, HOWARD COUNTY DEPARTMENT OF PUBLIC WORKS
DATE: 8/20/90

OWNER Institutional Realty Fund No. 2 1015 Grandview Avenue Glendale, California 91201-5050	PROJECT PUBLIC STORAGE INC. OLD WATERLOO ROAD P81 NO. 0611
DEVELOPER/CONTRACT PURCHASER PUBLIC STORAGE, INC. 4707 EISENHOWER AVENUE ALEXANDRIA, VIRGINIA 22304	LOCATION 4TH ELECTION DISTRICT, HOWARD COUNTY, MARYLAND TAX MAP 43, PARCEL 123 C.M.P. 1244 FOLIO 888
TITLE SEDIMENT AND EROSION CONTROL PLAN	
IMPROVEMENTS	
DATE OCT. 1989	SCALE AS SHOWN
SHT. 11 OF 11	

SDP-90-94

DATE	OCT. 89	APPROVAL	SWS
PROJECT	90117.02	DESIGNING	LEH
		CHECKING	LBT
		APPROVAL	AS
		DATE	SHOWN

DATE	4/4/90	DESCRIPTION	REVISIONS
	10/27/89	SEE INDEX ON SHEET 10 OF 11, SUB TO HC OF 1.2	4
		SUBMITTAL TO HOWARD COUNTY DEPT. OF PLANNING & ZONING	0

PUBLIC STORAGE INC
OLD WATERLOO ROAD P81 NO. 0611
1ST ELECTION DISTRICT HOWARD COUNTY, MARYLAND
SEDIMENT & EROSION CONTROL PLAN

kamber engineering
civil • environmental • surveying
818 x 7th Street, Suite 300 • Baltimore, MD 21202
(301) 841-1030