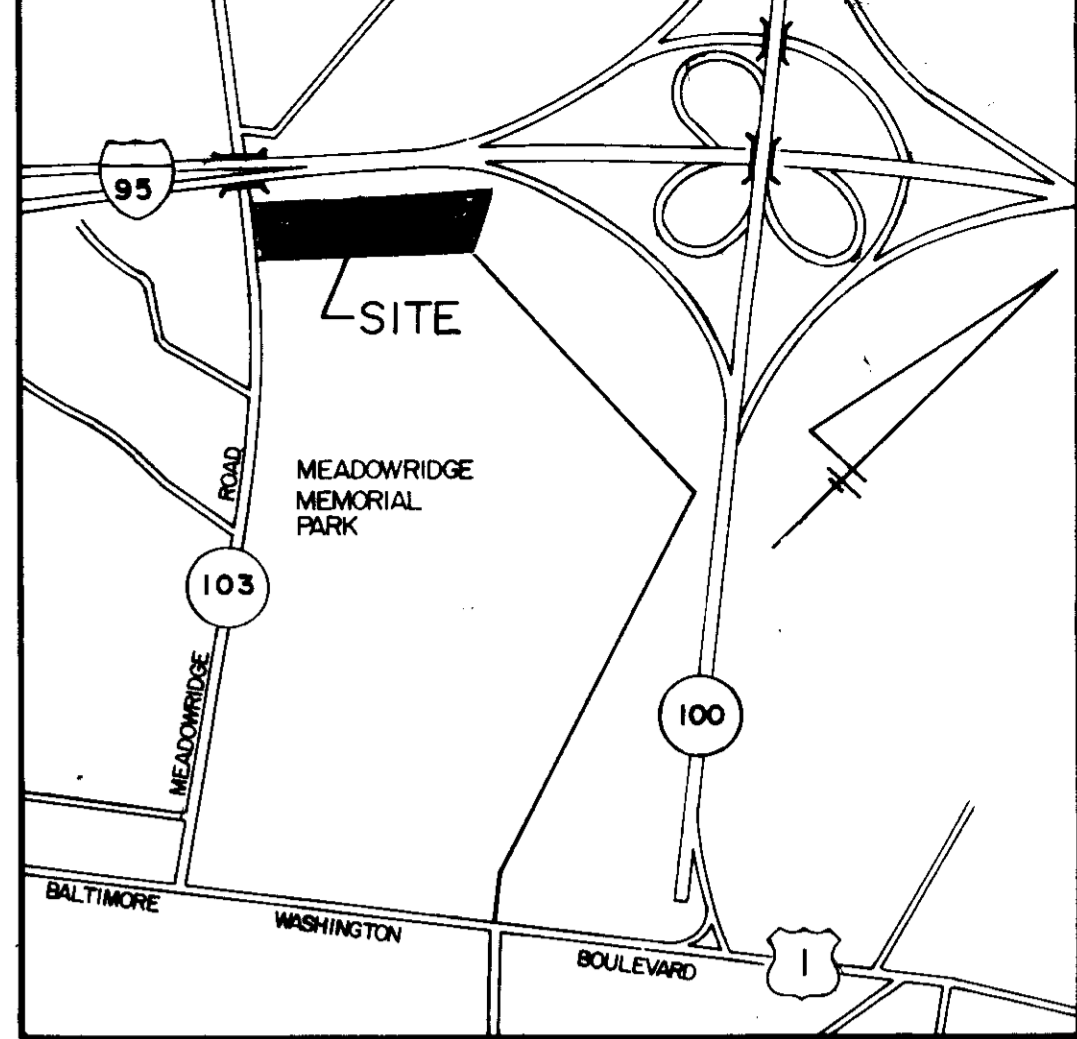
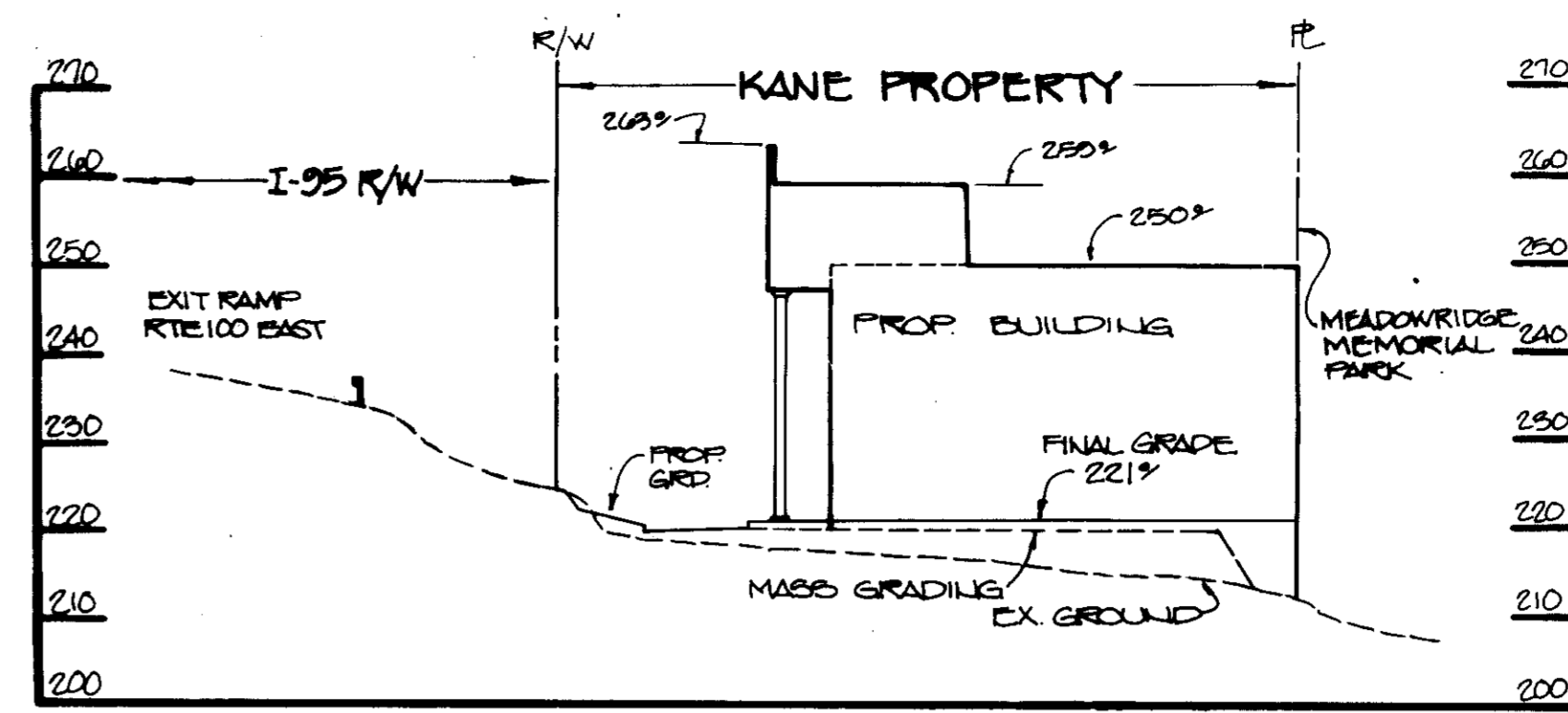


SHEET INDEX	
1	TITLE/ PLAN
2	PLAN/ DETAILS
3	STORM DRAIN PROFILES
4	STORM DRAIN PROFILES
5	UTILITY PROFILES
6	DRAINAGE AREA MAPS/ DETAILS
7	SEDIMENT CONTROL PLAN
8	SEDIMENT CONTROL PLAN
9	SEDIMENT CONTROL DETAILS
10	LANDSCAPE PLAN
11	LANDSCAPE PLAN

STRUCTURE SCHEDULE						
No.	TYPE	TOP ELEV.	INV. OUT	INV. IN	LOCATION	REMARKS
I-5	S Comb	218.09	219.26	219.36	See Plan	H.C. Std. SD 4.32
I-6	COB-10	224.16	218.68	-	5A 6'-0" x 24' RT	Md. Std. 374.31
M-6	SHALL.MH	221.00	218.23	216.83	See Plan	Md. Std. 383.00
E-3	C' ENDWALL	-	210.00	-	"	H.C. Std. SD 5.21
E-4	STD. E.S.	-	215.00	219.05	"	H.C. Std. SD 5.52
E-6	"	-	214.97	215.00	"	Md. Std. 370.01
S-1	MOD. TYPE 'A' HEADWALL	-	-	219.50	"	SEE DETAIL
S-2	"	-	-	215.25	"	"



I-95 NORTH BOUND LANE

PLAT # 34721

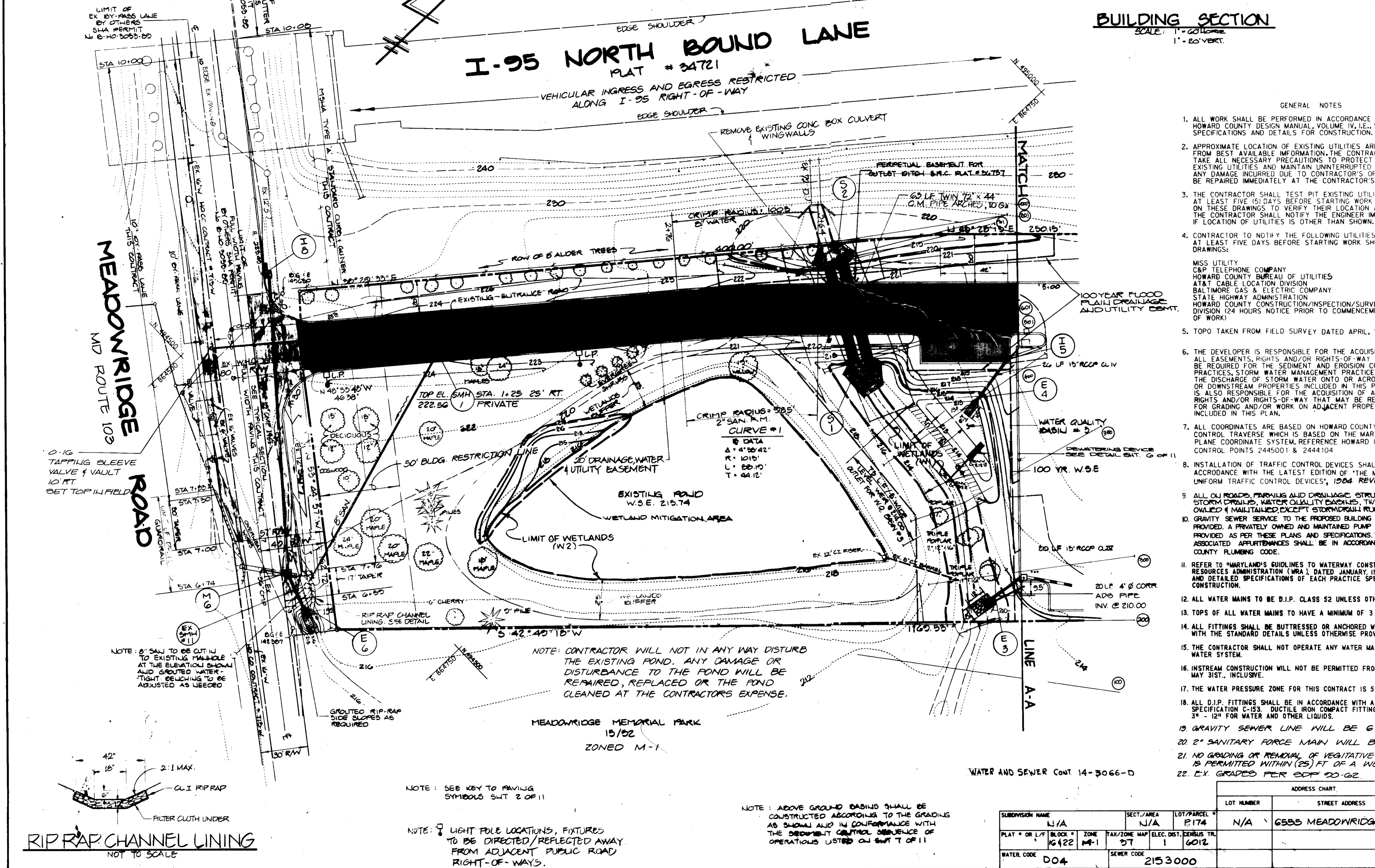
VEHICULAR INGRESS AND EGRESS RESTRICTED ALONG I-95 RIGHT-OF-WAY

BUILDING SECTION
SCALE: 1" = 20' VERT.

VICINITY MAP
SCALE: 1" = 2000'

- GENERAL NOTES**
- ALL WORK SHALL BE PERFORMED IN ACCORDANCE WITH THE HOWARD COUNTY DESIGN MANUAL, VOLUME IV, I.E., STANDARD SPECIFICATIONS AND DETAILS FOR CONSTRUCTION.
 - APPROXIMATE LOCATION OF EXISTING UTILITIES ARE SHOWN FROM BEST AVAILABLE INFORMATION. THE CONTRACTOR SHALL TAKE ALL NECESSARY PRECAUTIONS TO PROTECT THE EXISTING UTILITIES AND MAINTAIN UNINTERRUPTED SERVICE. ANY DAMAGE INCURRED DUE TO CONTRACTOR'S OPERATION SHALL BE REPAIRED IMMEDIATELY AT THE CONTRACTOR'S EXPENSE.
 - THE CONTRACTOR SHALL TEST PIT EXISTING UTILITIES AT LEAST FIVE (5) DAYS BEFORE STARTING WORK SHOWN ON THESE DRAWINGS TO VERIFY THEIR LOCATION AND ELEVATION. THE CONTRACTOR SHALL NOTIFY THE ENGINEER IMMEDIATELY IF LOCATION OF UTILITIES IS OTHER THAN SHOWN.
 - CONTRACTOR TO NOTIFY THE FOLLOWING UTILITIES OR AGENCIES AT LEAST FIVE DAYS BEFORE STARTING WORK SHOWN ON THESE DRAWINGS:
 - MISS UTILITY: 1-800-257-7777
 - C&P TELEPHONE COMPANY: 752-9976
 - HOWARD COUNTY BUREAU OF UTILITIES: 992-2366
 - AT&T CABLE LOCATION DIVISION: 393-3553
 - BALTIMORE GAS & ELECTRIC COMPANY: 885-0123
 - STATE HIGHWAY ADMINISTRATION: 531-5533
 - HOWARD COUNTY CONSTRUCTION INSPECTION/SURVEY DIVISION (24 HOURS NOTICE PRIOR TO COMMENCEMENT OF WORK): 792-7272
 - SOPI TAKEN FROM FIELD SURVEY DATED APRIL, 1989 BY KCL.
 - THE DEVELOPER IS RESPONSIBLE FOR THE ACQUISITION OF ALL EASEMENTS, RIGHTS AND/OR RIGHTS-OF-WAY THAT MAY BE REQUIRED FOR THE SEDIMENT AND EROSION CONTROL PRACTICES, STORM WATER MANAGEMENT PRACTICES AND THE DISCHARGE OF STORM WATER ONTO OR ACROSS ADJACENT OR DOWNSTREAM PROPERTIES INCLUDED IN THIS PLAN. HE IS ALSO RESPONSIBLE FOR THE ACQUISITION OF ALL EASEMENTS, RIGHTS AND/OR RIGHTS-OF-WAY THAT MAY BE REQUIRED FOR GRADING AND/OR WORK ON ADJACENT PROPERTIES INCLUDED IN THIS PLAN.
 - ALL COORDINATES ARE BASED ON HOWARD COUNTY GEODETIC CONTROL TRAVERSE WHICH IS BASED ON THE MARYLAND STATE PLANE COORDINATE SYSTEM. REFERENCE HOWARD COUNTY CONTROL POINTS 2445001 & 2444104.
 - INSTALLATION OF TRAFFIC CONTROL DEVICES SHALL BE IN ACCORDANCE WITH THE LATEST EDITION OF 'THE MANUAL OF UNIFORM TRAFFIC CONTROL DEVICES', 1994 REVISED EDITION.
 - ALL OLD ROADS, PARKING AND DRAINAGE STRUCTURES (INCLUDING STORM DRAINS, WATER QUALITY BASINS, TWIN CULVERTS) SHALL BE PRIVATELY OWNED & MAINTAINED EXCEPT STORM DRAINS 1'-7' TO 5'-0" WHICH WILL BE PUBLIC.
 - GRAVITY SEWER SERVICE TO THE PROPOSED BUILDING CANNOT BE PHYSICALLY PROVIDED. A PRIVATELY OWNED AND MAINTAINED PUMP STATION SHALL BE PROVIDED AS PER THESE PLANS AND SPECIFICATIONS. THE PUMPS AND ASSOCIATED APPURTENANCES SHALL BE IN ACCORDANCE WITH THE HOWARD COUNTY PLUMBING CODE.
 - REFER TO 'MARYLAND'S GUIDELINES TO WATERWAY CONSTRUCTION' BY THE WATER RESOURCES ADMINISTRATION (MRA) DATED JANUARY 1986 FOR STANDARD DETAILS AND DETAILED SPECIFICATIONS OF EACH PRACTICE SPECIFIED HEREIN FOR WATERWAY CONSTRUCTION.
 - ALL WATER MAINS TO BE D.I.P. CLASS 52 UNLESS OTHERWISE NOTED.
 - TOPS OF ALL WATER MAINS TO HAVE A MINIMUM OF 3 1/2" COVER.
 - ALL FITTINGS SHALL BE BUTTRESSED OR ANCHORED WITH CONCRETE IN ACCORDANCE WITH THE STANDARD DETAILS UNLESS OTHERWISE PROVIDED FOR ON THE DRAWINGS.
 - THE CONTRACTOR SHALL NOT OPERATE ANY WATER MAIN VALVES ON THE EXISTING WATER SYSTEM.
 - INSTREAM CONSTRUCTION WILL NOT BE PERMITTED FROM MARCH 1ST THROUGH MAY 31ST, INCLUSIVE.
 - THE WATER PRESSURE ZONE FOR THIS CONTRACT IS 550.
 - ALL D.I.P. FITTINGS SHALL BE IN ACCORDANCE WITH A.W.W.A. SPECIFICATION C-153. DUCTILE IRON COMPACT FITTINGS 3" - 12" FOR WATER AND OTHER LIQUIDS.
 - GRAVITY SEWER LINE WILL BE 6" F.V.C.
 - 2" SANITARY FORCE MAIN WILL BE PVC.
 - NO GRADING OR REMOVAL OF VEGETATIVE COVER IS PERMITTED WITHIN (25) FT OF A WETLAND.
 - EX. GRADES PER SDP 90-62.

NOTE: PRIOR SDP 90-62



Drafting	DATE	REVISIONS

KIDDE CONSULTANTS, INC.
ENGINEERS PLANNERS SURVEYORS
1020 CROWNELL BRIDGE ROAD, BALTIMORE, MARYLAND 21204, 301-321-5500

OWNER / DEVELOPER
CIRCLE K-2 REALTY LTD PARTNERSHIP
4922 ANNAPOLIS ROAD
BALTIMORE, MD 21227

SUBDIVISION NAME	SECT./AREA	LOT/PARCEL #
N/A	N/A	P174
PLAT # OR L/T BLOCK #	ZONE	TAX/ZONE MAP ELEC. DIST. DENOM. TR.
16422	M-1	37 1 6012
WATER CODE	SEWER CODE	
D04	2153000	

SITE DEVELOPMENT PLAN
E. I. KANE INC. HEADQUARTERS
1ST. ELECTION DISTRICT HOWARD COUNTY, MARYLAND

SHEET	DATE	JOB NUMBER
1 OF 11	OCT. 6, 1989	

APPROVED: FOR PUBLIC WATER AND SEWERAGE SYSTEMS, HOWARD COUNTY HEALTH DEPARTMENT
Joseph M. ... 9-6-90
COUNTY HEALTH OFFICER

APPROVED: HOWARD COUNTY DEPT. OF PLANNING AND ZONING
... 10.5.90
DIRECTOR

APPROVED: FOR PUBLIC WATER AND SEWERAGE (PRIVATE) STORM DRAINAGE SYSTEMS AND PRIVATE ROADS, HOWARD COUNTY DEPARTMENT OF PUBLIC WORKS
... 8/15/90
DIRECTOR

APPROVED: MICHAEL BUREAU OF ENGINEERING
... 8/15/90
DATE