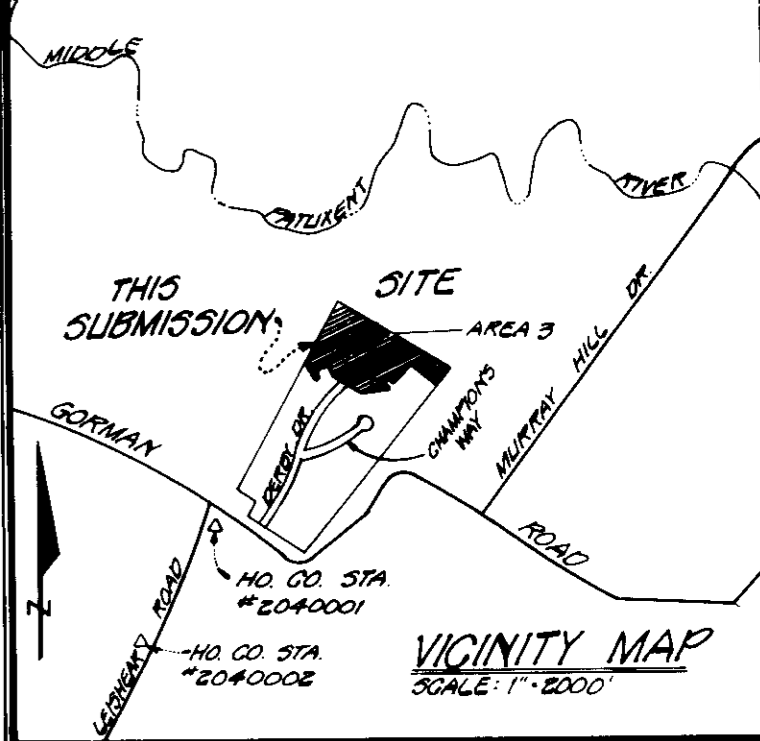
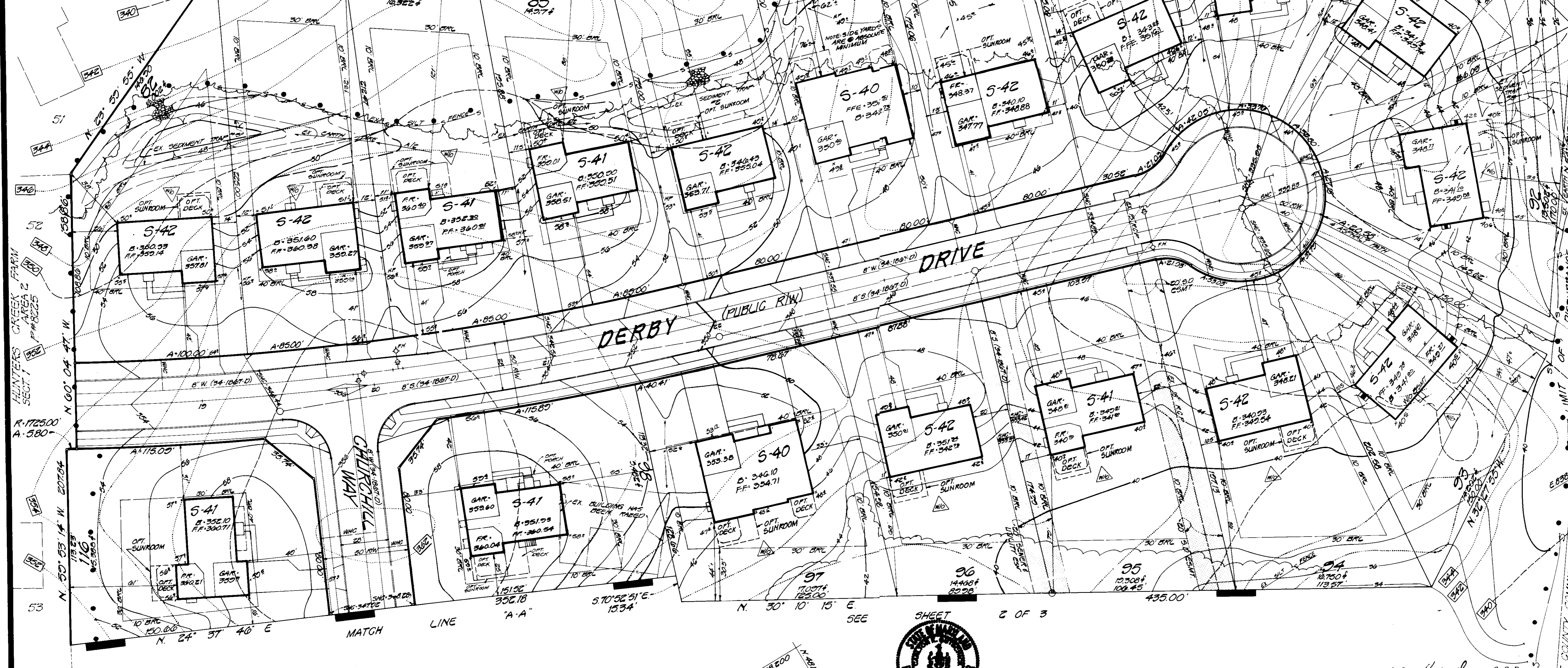


GENERAL NOTES

- The land included is zoned R-20.
- The area covered by this plan is located on Tax Map 42 & 47.
- The total number of lots included in this plan is 35 (plus two open-space lots).
- The total lot area of Hunter's Creek Farm, Section 1 Area 3, is 12.12 Ac.
- All roadways are public.
- Any damage to County owned right-of-way shall be corrected at the Developer's expense.
- Stormwater Management is provided under contract No. P-20-20.
- See sheet No. 3 for apron details.
- For reference please see DPE Files: S-87-21, P-87-61, VP-87-16 and P-20-20.

REQUIREMENT TRAP NO. 2 Sediment Trap
 Drainage Area = 0.6 Ac.
 (Pre-Development) (Post-Development)
 Storage Required = 10(1800) = 1800 cu.ft.
 Storage Depth = 3 feet
 Cleanout Elevation = 342.5
 Inlet Elevation = 340.0
 Inlet Slope = 2%
 Rise Slope = 2%
 Surface Area Elevation = 342.0 (ft. N.S.) = 1800 sq. ft.
 Surface Area Elevation = 340.0 (ft. N.S.) = 1800 sq. ft.
 Volume Provided = 1800(3) = 5400 cu.ft.
 L.O.S. = Limit of Storage



ADDRESS CHART

LOT NO.	STREET ADDRESS
82	10373 DERBY DRIVE
83	10377
84	10381
85	10385
86	10389
87	10393
88	10397
89	10401
90	10405
91	10409
92	10413
93	10417
94	10421
95	10425
96	10429
97	10433
98	10437
99	10441
100	10445
101	10449
102	10453
103	10457
104	10461
105	10465
106	10469
107	10473
108	10477
109	10481
110	10485
111	10489
112	10493
113	10497
114	10501
115	10505
116	10509

REQUIREMENT TRAP NO. 2 Sediment Trap
 Drainage Area = 0.6 Ac.
 (Pre-Development) (Post-Development)
 Storage Required = 26(1800) = 4680 cu.ft.
 Storage Depth = 3 feet
 Cleanout Elevation = 342.5
 Inlet Elevation = 340.0
 Inlet Slope = 2%
 Rise Slope = 2%
 Surface Area Elevation = 342.0 (ft. N.S.) = 1800 sq. ft.
 Surface Area Elevation = 340.0 (ft. N.S.) = 1800 sq. ft.
 Volume Provided = 4680(3) = 14040 cu.ft.
 L.O.S. = Limit of Storage

LEGEND

- EXISTING CONTOUR
- PROPOSED CONTOUR
- WALK-OUT BASEMENT
- EASEMENTS
- LIMIT OF DISTURBANCE
- EX. SILT FENCE
- EX. EARTH DIKE

APPROVED: FOR PUBLIC WATER & PUBLIC SEWERAGE SYSTEMS, HOWARD COUNTY HEALTH DEPARTMENT.
James M. Bopp 4/2/90
 Director

APPROVED: HOWARD COUNTY DEPT. OF PLANNING & ZONING
John J. ... 4/30/90
 Director

APPROVED: FOR PUBLIC WATER & PUBLIC SEWERAGE, STORM DRAINAGE SYSTEMS AND PUBLIC ROADS HOWARD COUNTY DEPARTMENT OF PUBLIC WORKS
James J. ... 4/30/90
 Director

DEVELOPER'S/BUILDER'S CERTIFICATE

"I/We certify that all development and construction will be done according to this plan, and that any responsible personnel involved in the construction project will have a Certificate of Attendance at a Department of Natural Resources Approved Training Program for the Control of Sediment and Erosion before beginning the project. I also authorize periodic on-site inspection by the HSCD."

Michael G. ... 9-12-89
 Signature of Developer/Builder Date

ENGINEER'S CERTIFICATE

"I certify that this plan for erosion and sediment control represents a practical and workable plan based on my personal knowledge of the site conditions and that it was prepared in accordance with the requirements of the Howard Soil Conservation District."

Cliff ... 9-12-89
 Date

Reviewed for *Howard* S.C.D. Name and meets Technical Requirements.
James M. ... 3/19/91
 U.S. Soil Conservation Service Date

THIS DEVELOPMENT PLAN IS APPROVED FOR SOIL EROSION AND SEDIMENT CONTROL BY THE HOWARD SOIL CONSERVATION DISTRICT.
John ... 3/19/91
 Howard S.C.D. Date

BOARD OF COUNTY COMMISSIONERS
 HOWARD COUNTY, MARYLAND
 L 4517 FEB 23

SUBDIVISION NAME	SECTION	LOT/PARCEL #
HUNTERS CREEK FARM	113	82-116/91
PLAT #	TAX MAP #	ELECT. DIST. / CENSUS TR.
8503	19 R20	42147 0 8062
WATER CODE	SEWER CODE	
E15	6340000	

GLW GUTSCHICK LITTLE & WEBER, P.A.
 ENGINEERS, PLANNERS, SURVEYORS
 3909 NATIONAL DRIVE - SUITE 250 - BURTONSVILLE OFFICE PARK - BURTONSVILLE, MD. 20886
 TELEPHONE: (301) 421-4024

DATE	REVISION	BY	APP'R.
7-22-83	REVISED GRADING LOTS 84-97-HK		
4-13-83	RESITE LOTS 90-92-HK [5-7]-23; RESITE LOT 88-HK		
8-22-82	RESITE LOT 83-HK [2-23]-23; RESITE LOT 87-HK		
8-12-81	RESITES ON LOTS 83, 84, & 88		
3-7-81	ADDED OPTIONAL DECK & SUNROOM REVISED HOUSE LOCATIONS LOTS 80-81		

PREPARED FOR:
 CAPITAL HOMES
 10200 GORMAN ROAD
 LAUREL, MARYLAND 20707

SITE DEVELOPMENT PLAN
HUNTERS CREEK FARM
 SECTION 1 AREA 3
 LOTS 82-116
 6TH ELECTION DISTRICT
 HOWARD COUNTY, MARYLAND

SCALE	ZONING	G.L.W. FILE NO.
1"=30'	R-20	86-027
DATE	TAX MAP #	SHEET
JUNE 1989	42147	1 OF 3

DATE	REVISION	DATE	REVISION
8-2-93	REVISED GRADING LOTS 108-117-H		

