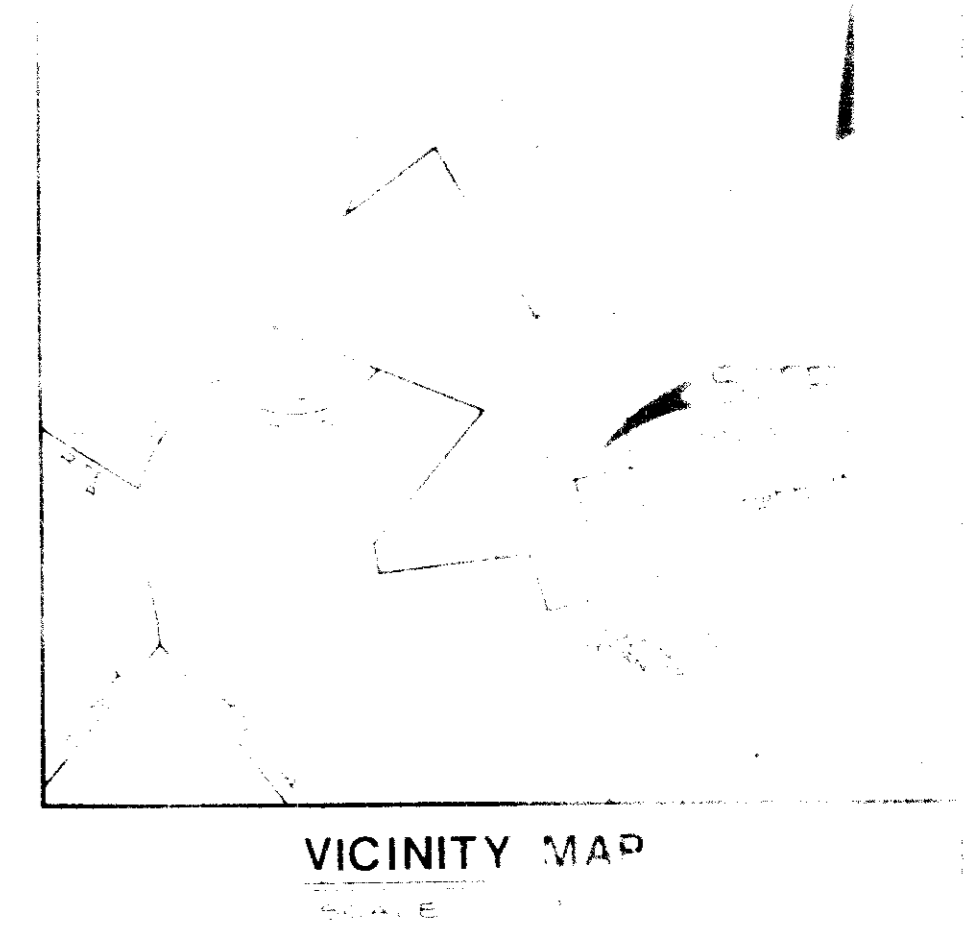
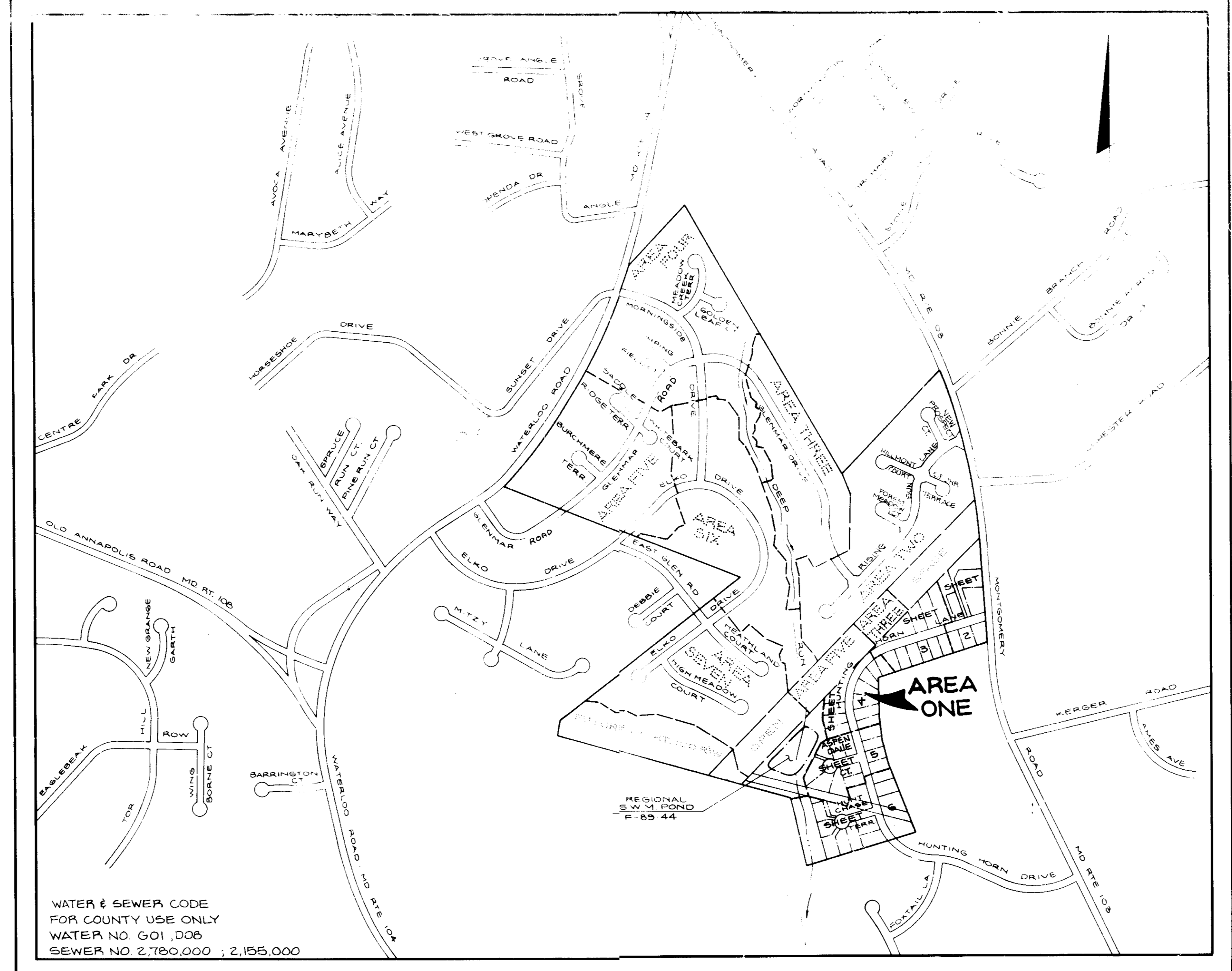


LOT No	ADDRESS
1	2453 HUNTING HORN DRIVE
2	2452
3	2451
4	2450
5	2449
6	2448
7	2447
8	2446
9	2445
10	2444
11	2443
12	2442
13	2441
14	2440
15	2439
16	2438
17	2437
18	2436
19	2435
20	2434
21	2433
22	2432
23	2431
24	2430
25	2429
26	2428
27	2427
28	2426 HUNTING HORN DRIVE
29	2425 HUNT CHASE TERRACE
30	2424
31	2423
32	2422
33	2421
34	2420
35	2419
36	2418
37	2417 HUNT CHASE TERRACE
38	2416 HUNTING HORN DRIVE
39	2415
40	2414 HUNTING HORN DRIVE
41	2413 ASPEN DALE COURT
42	2412
43	2411
44	2410 ASPEN DALE COURT
45	2409 HUNTING HORN DRIVE
46	2408
47	2407
48	2406
49	2405
50	2404
51	2403
52	2402
53	2401
54	2400
55	2399
56	2398
57	2397
58	2396 HUNTING HORN DRIVE



INDEX OF SHEETS	
SHEET No	TITLE SHEET
1	TITLE SHEET
2	SITE DEVELOPMENT PLAN- LOTS 4-6 AND LOTS 54-58
3	SITE DEVELOPMENT PLAN- LOTS 7-12 AND LOTS 41-45
4	SITE DEVELOPMENT PLAN- LOTS 13-19 AND LOTS 46-53
5	SITE DEVELOPMENT PLAN- LOTS 20-23 AND LOTS 54-58
6	SITE DEVELOPMENT PLAN- LOTS 24-37
7	SEDIMENT CONTROL PLAN- LOTS 4-6 AND LOTS 54-58
8	SEDIMENT CONTROL PLAN- LOTS 7-12 AND LOTS 41-45
9	SEDIMENT CONTROL PLAN- LOTS 13-19 AND LOTS 46-53
10	SEDIMENT CONTROL PLAN- LOTS 20-23 AND LOTS 54-58
11	SEDIMENT CONTROL PLAN- LOTS 24-37
12	NOTES AND DETAILS

- GENERAL NOTES
1. Site Area:
    - A. 100' x 100' (10,000 sq. ft.)
    - B. 100' x 100' (10,000 sq. ft.)
    - C. 100' x 100' (10,000 sq. ft.)
    - D. 100' x 100' (10,000 sq. ft.)
  2. Typical Minimum Set Backs:
    - A. Front:
      - 1) Lots 4-6 and 54-58: 50'
      - 2) Lots 7-12 and 41-45: 40'
    - B. Rear: 10'
    - C. Side: 10'
    - D. Corner: 10'
  3. For typical house dimensions, house profiles, and details, see attached sheets and specifications, sheet 2 of 12.
  4. All work shown on these plans shall be done in accordance with the Hazardous Waste Site Remediation Act and the Construction Code.
  5. The contractor and the developer shall coordinate with the County Department of Public Works prior to construction of the work shown on these plans.
  6. The contractor and the developer shall coordinate with the County Department of Public Works prior to construction of the work shown on these plans.
  7. Any work shown on these plans shall be done in accordance with the Hazardous Waste Site Remediation Act and the Construction Code.
  8. The contractor and the developer shall coordinate with the County Department of Public Works prior to construction of the work shown on these plans.
  9. The contractor and the developer shall coordinate with the County Department of Public Works prior to construction of the work shown on these plans.
  10. REFER TO 65-ET-GA-BND 17-87-71 FOR SKETCH AND RECOMMENDED ROAD DIMENSIONS.
  11. THIS SUBDIVISION WAS RECORDED 11/10/89 AMONG THE LAND RECORDS OF HOWARD COUNTY ON PLAT NUMBERS 2001, 2002 & 2003.

# MONTGOMERY MEADOWS SECTION ONE AREA ONE SITE DEVELOPMENT PLAN 1ST ELECTION DISTRICT HOWARD COUNTY, MARYLAND

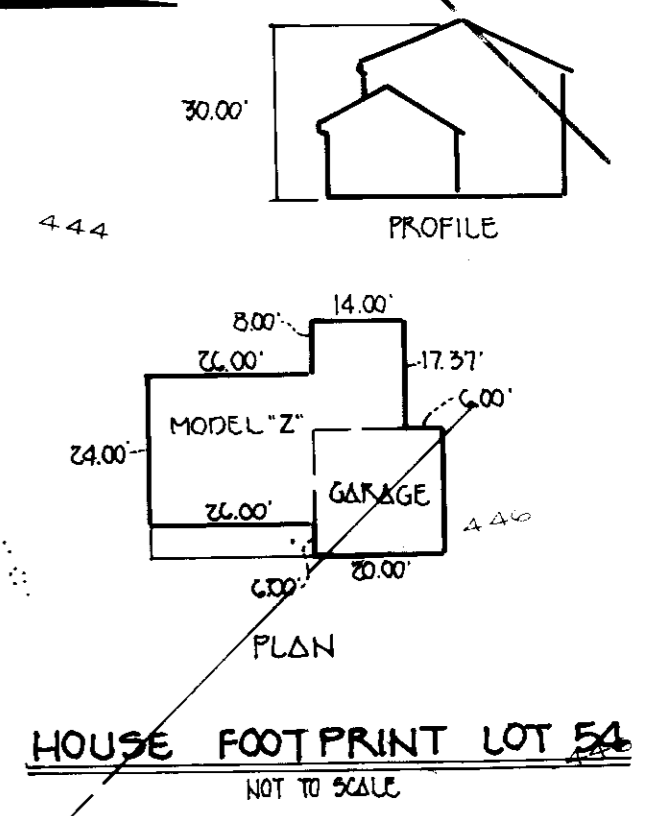
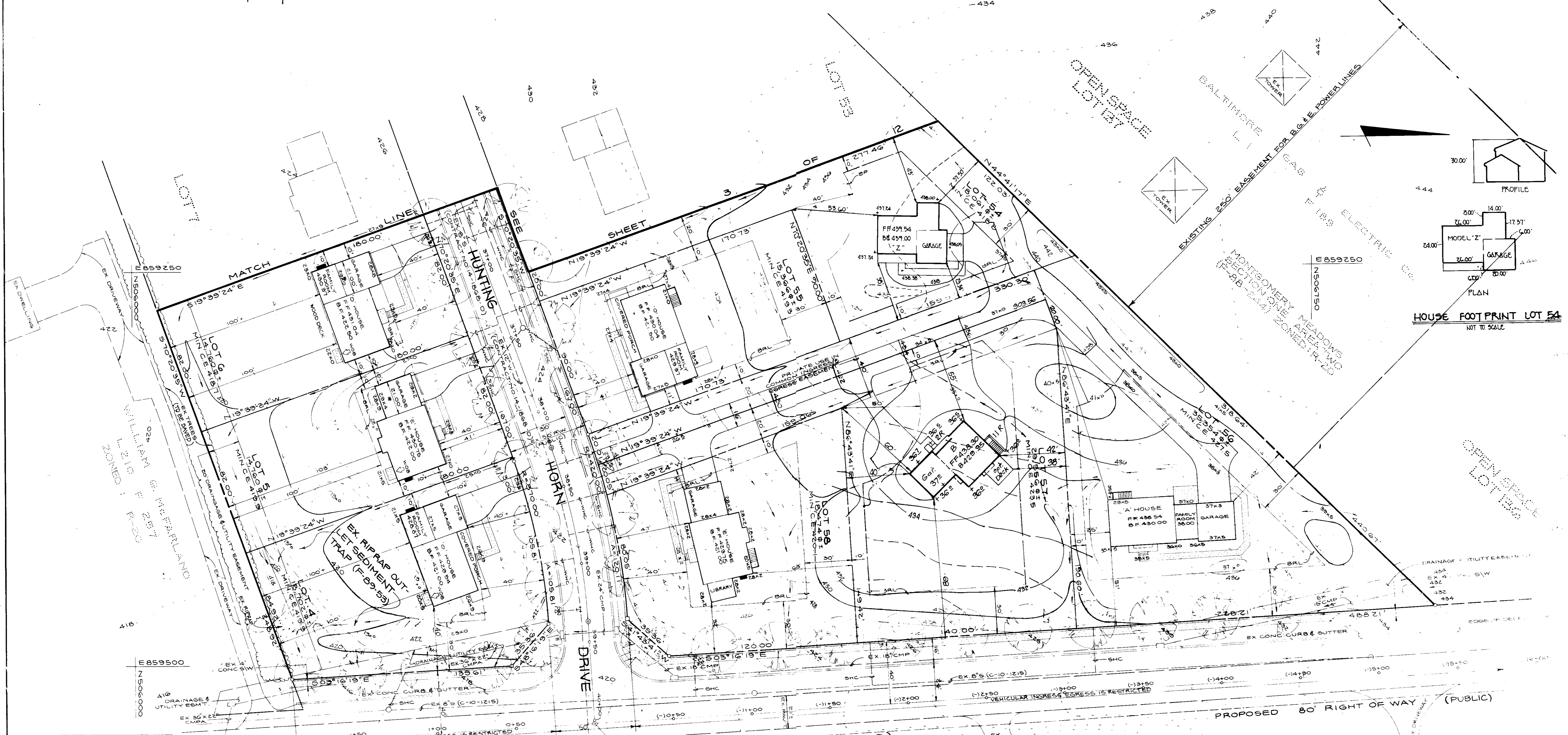
APPROVED  
COMMISSIONER OF PLANNING  
8-22-89  
J.B.



OWNER/DEVELOPER  
**F G Marker**  
Co., Inc.  
Builders & Developers  
SUITE 707, 5900 PRINCESS MARGARET PARKWAY  
LANHAM, MD 20686  
PHONE 455-5588

<p><b>Dewberry &amp; Davis</b> ARCHITECTS, ENGINEERS, PLANNERS, SURVEYORS 3011 KENNEDY BLVD. FARMERS MARKET 21045 301-461-7475 FAX 301-461-7470</p>	<p><i>John W. Jones</i> 10-10-89 DANIEL W. JONES REGISTERED PROFESSIONAL ENGINEER STATE OF MARYLAND LICENSE NO. 10,979</p>	<p>REVIEWED FOR HOWARD SOIL CONSERVATION DISTRICT AND MEETS TECHNICAL REQUIREMENTS. <i>[Signature]</i> 12/17/89 SOIL CONSERVATION SERVICE DISTRICT THIS DEVELOPMENT IS APPROVED FOR EROSION AND SEDIMENT CONTROL BY THE HOWARD SOIL CONSERVATION DISTRICT. <i>[Signature]</i> 12/17/89 HOWARD SOIL CONSERVATION DISTRICT</p>	<p>DEPARTMENT OF PLANNING AND ZONING <i>[Signature]</i> 1-6-90 PLANNING DIRECTOR <i>[Signature]</i> 1/5/90 CHIEF, DIVISION OF COMMUNITY PLANNING AND LAND DEVELOPMENT APPROVED: HOWARD COUNTY HEALTH DEPARTMENT FOR PUBLIC WATER AND SEWERAGE SYSTEMS. <i>[Signature]</i> 1-18-90 HOWARD COUNTY HEALTH DEPARTMENT</p>	<p>TITLE SHEET <b>MONTGOMERY MEADOWS</b> SECTION ONE AREA ONE LOTS 4 THRU 58 TAX MAP 31 P.O. PARCEL 414 1ST ELECTION DISTRICT SCALE: AS SHOWN DATE APPROVED: 8/22/89 SHEET 1 OF 12</p>
---	--	--	---	--

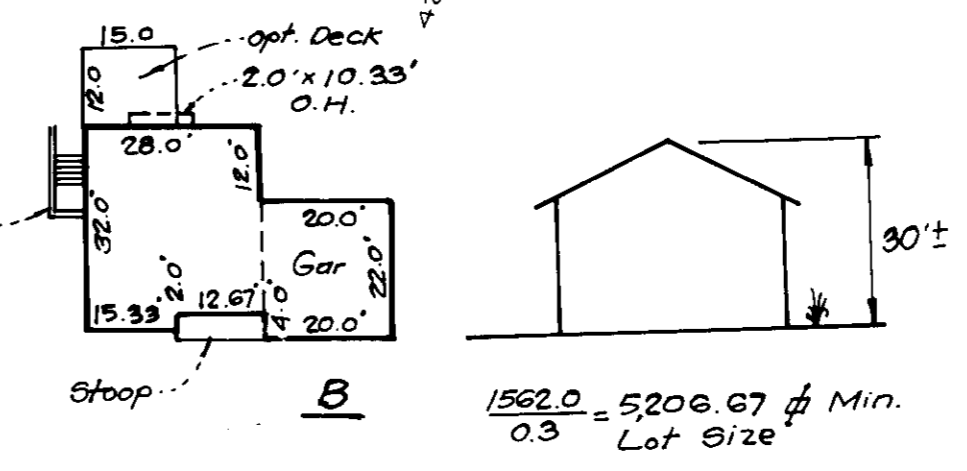
NO	REVISIONS	Date
1	Rev. hse. & grd. lot 57, Add hse typical, By Clark, Finefrock & Sackett, Inc.	10-5-93
2	REV. MOD. & GRD. ON LOT 54	12-11-96



**APPROVED**  
DIVISION of  
COMMUNITY PLANNING  
& LAND DEVELOPMENT  
HOWARD COUNTY,  
MARYLAND  
DATE: **8-22-89**

NOTE: \* DENOTES HOUSES WITH 21'00" WIDE GARAGE

*For Revision to lot 57 by Clark, Finefrock & Sackett, Inc. Dated 10/5/93*

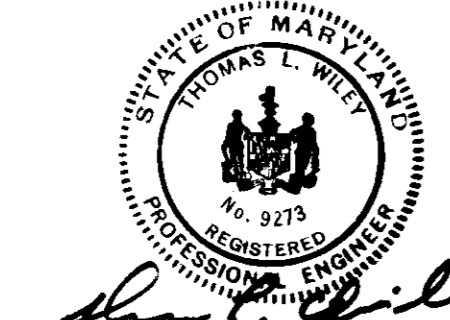


OWNER/DEVELOPER

**J & M Marker**  
Co., Inc.

Builders & Developers  
SUITE 707, 5900 PRINCESS GARDEN PARKWAY  
LANHAM, MD 20708  
PHONE: 459-5599

Dowberry & Davis



*Daniel P. Marker* 10-10-89

*Daniel P. Marker* 10-10-89  
DANIEL MARKER, F.G. MARKER CO. INC.

REVIEWED FOR HOWARD SOIL CONSERVATION DISTRICT AND MEETS TECHNICAL REQUIREMENTS.

*James H. Hester* 10/19/89  
SOIL CONSERVATION SERVICE DATE

THIS DEVELOPMENT IS APPROVED FOR EROSION AND SEDIMENT CONTROL BY THE HOWARD SOIL CONSERVATION DISTRICT.

*John H. Blanton* 12/17/89  
HOWARD SOIL CONSERVATION DISTRICT

APPROVED BY DEPARTMENT OF PLANNING AND ZONING

*W. H. ...* 2-6-90  
PLANNING DIRECTOR DATE

APPROVED BY COMMUNITY PLANNING AND LAND DEVELOPMENT

*James P. ...* 1-18-90  
COMMUNITY PLANNING AND LAND DEVELOPMENT

APPROVED BY DEPARTMENT OF PUBLIC WORKS

*James P. ...* 1-16-90  
PUBLIC WORKS DATE

APPROVED BY DEPARTMENT OF PUBLIC WORKS

*James P. ...* 1-16-90  
PUBLIC WORKS

SITE DEVELOPMENT PLAN

MONTGOMERY MEADOWS

SECTION ONE AREA ONE

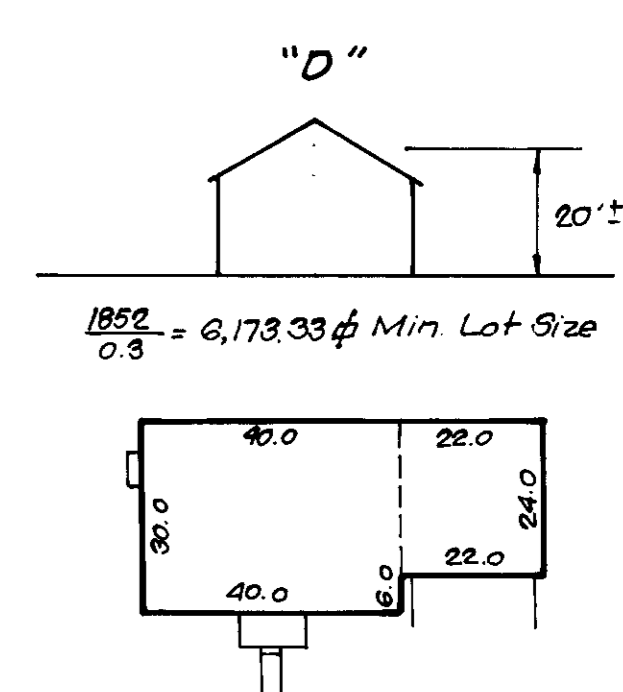
LOTS 4 TO 58

TAX MAP 31 P/O PARCEL 423

1ST ELECTION DISTRICT

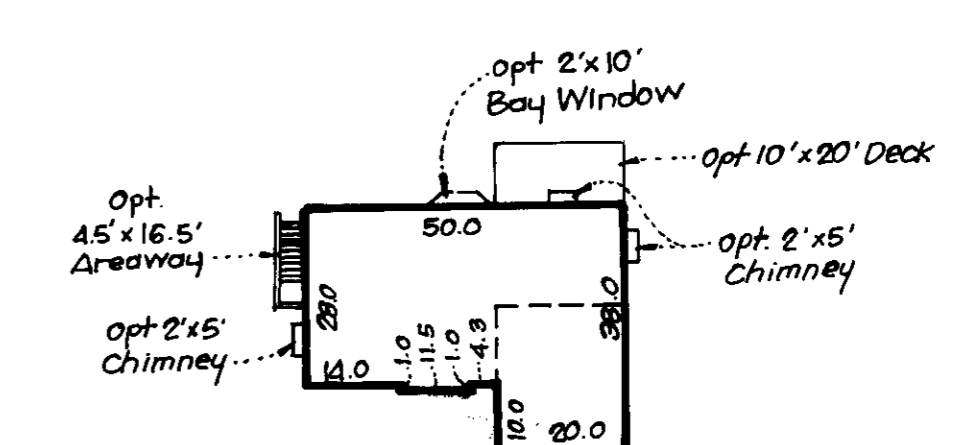
SCALE: 1" = 30' DATE: 8-22-89  
SHEET: 1 OF 1  
DESIGNED: B.O.B. ENGINEER  
S.D.P. - 89-228

MONTGOMERY MEADOWS SECTION ONE AREA TWO (F-88-244) ZONED R-20 OPEN SPACE LOT 1ST



1012 = 6,372 sq Min. Lot Size

1852 = 6,173.33 sq Min. Lot Size



OWNER/DEVELOPER

**D G Marker**  
Co., Inc.

Builders & Developers  
707, 5900 PRINCESS GARDEN PARKWAY  
LANHAM, MD 20705  
PHONE: 459-5586

APPROVED  
DIVISION of  
COMMUNITY PLANNING  
& LAND DEVELOPMENT  
HOWARD COUNTY,  
MARYLAND  
DATE **8-22-89**

FOR REVISION TO LOT 51  
BY LAND DESIGNER, INC.  
*BRUCE D. DUNN*

FOR REVISION TO LOT 52  
BY LAND DESIGNER, INC.  
*ROBERT J. JAGG*

FOR REVISION TO LOTS 7 AND 10  
BY CLARK, FINEFROCK & SACKETT, INC.  
*CLARK, FINEFROCK & SACKETT, INC.*

NO	REVISION	DATE
1	Rev. hse. & grd. lot 9 by CLARK, FINEFROCK & SACKETT, INC.	1-3-92
2	Rev. hse. & grd. lot 8 by CLARK, FINEFROCK & SACKETT, INC.	2-26-92
3	Rev. hse. & grd. lots 7 & 10 by CLARK, FINEFROCK & SACKETT, INC.	3-23-92
4	Rev. hse. Lot 52 by Land Design Engr.	10-23-92
5	Rev. hse. Lot 51 by Land Design Engr.	2-11-93

**Dewberry & Davis**  
ARCHITECTS ENGINEERS PLANNERS SURVEYORS  
3300 N. Ridge Road  
Suite 100  
Elkridge City, Maryland  
21043  
301-461-7478 (local)  
301-461-9970 (toll-free)

ENGINEER'S CERTIFICATE  
I HEREBY CERTIFY THAT THE PLAN, SPECIFICATIONS AND SECTION...  
*Alan L. Kelly*  
10-10-89

DEVELOPER'S CERTIFICATE  
I HEREBY CERTIFY THAT ALL DEVELOPMENT AND CONSTRUCTION...  
*Daniel Marker*  
10-10-89

REVIEWED FOR HOWARD SOIL CONSERVATION DISTRICT AND MEETS TECHNICAL REQUIREMENTS.  
*James H. H...*  
12/19/89

APPROVED: DEPARTMENT OF PLANNING AND ZONING  
PLANNING DIRECTOR  
*James S. ...*  
12/18/89

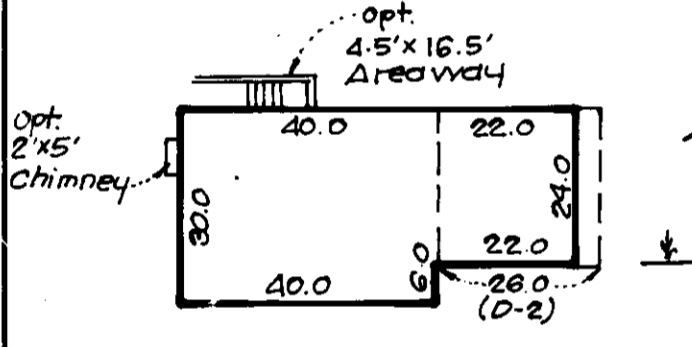
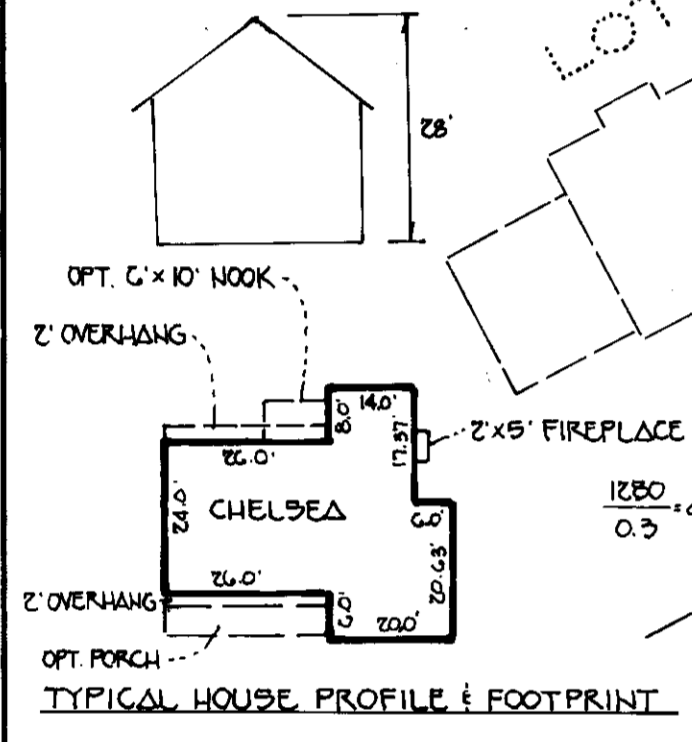
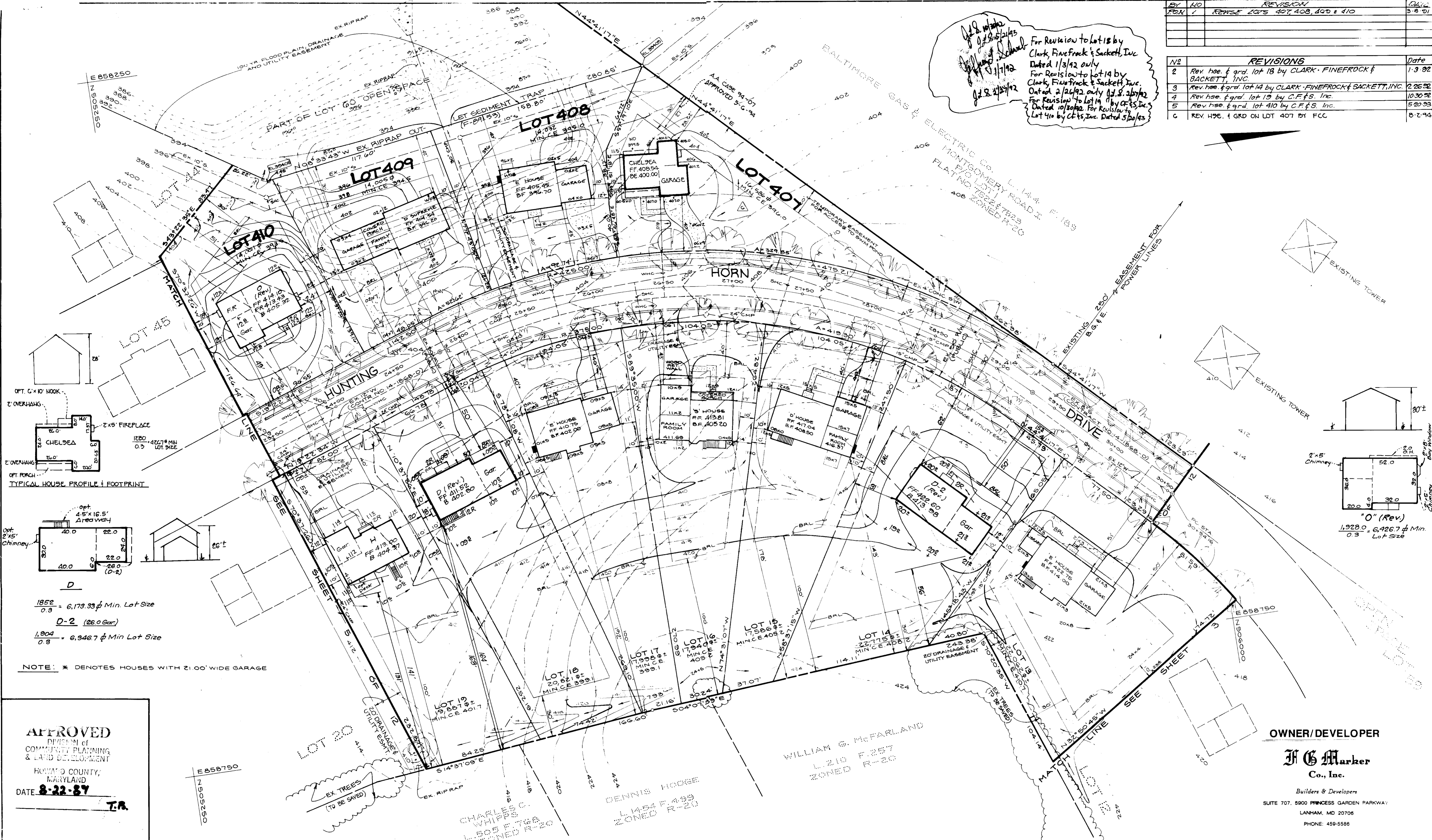
APPROVED: DEPARTMENT OF PUBLIC WORKS  
FOR PUBLIC WATER AND SEWER AND STORM DRAINAGE SYSTEMS AND ROAD.  
*James M. ...*  
1/16/90

SITE DEVELOPMENT PLAN  
MONTGOMERY MEADOWS  
SECTION ONE AREA ONE  
LOTS 4 TO 58  
TAX MAP 31 P/O PARCEL 423  
1ST. ELECTION DISTRICT HOWARD COUNTY MD  
SCALE: 1"=30' DATE APRIL 24, 1989  
SHEET 3 OF 10  
DESIGNED: B.D.B. DRAWN: M.E.S.  
S.D.P. - 89-228

BY	NO	REVISION	DATE
PKM	1	REVISE LOTS 407, 408, 409 & 410	5-8-91

NO	REVISIONS	DATE
2	Rev hse. & grd. lot 18 by CLARK-FINEPROCK & SACKETT, INC.	1-3-92
3	Rev hse. & grd. lot 14 by CLARK-FINEPROCK & SACKETT, INC.	2-26-92
4	Rev hse. & grd. lot 19 by C.F.S. Inc.	10-30-92
5	Rev hse. & grd. lot 410 by C.F.S. Inc.	5-20-93
6	REV. HSE. & GRD ON LOT 407 BY FCC	8-2-94

*John W. ...*  
 For Revision to Lot 18 by  
 Clark, Fineprock & Sackett, Inc.  
 Dated 1/3/92 only  
 For Revision to Lot 14 by  
 Clark, Fineprock & Sackett, Inc.  
 Dated 2/26/92 only (J.S. 2/27/92)  
 For Revision to Lot 19 by C.F.S. Inc.  
 Dated 10/30/92. For Revision to  
 Lot 410 by C.F.S. Inc. Dated 5/20/93



$\frac{1852}{0.3} = 6,173.33 \text{ } \phi \text{ Min. Lot Size}$   
 D-2 (26.0 Gar)  
 $\frac{1,804}{0.3} = 6,346.7 \text{ } \phi \text{ Min Lot Size}$

NOTE: \* DENOTES HOUSES WITH 21.00' WIDE GARAGE

**APPROVED**  
 DIVISION OF  
 COMMUNITY PLANNING  
 & LAND DEVELOPMENT  
 HOWARD COUNTY,  
 MARYLAND  
 DATE **8-22-87**  
 T.R.

**OWNER/DEVELOPER**  
**J G Marker**  
 Co., Inc.  
 Builders & Developers  
 SUITE 707, 5900 PRINCESS GARDEN PARKWAY  
 LANHAM, MD 20706  
 PHONE: 459-5586

**Dewberry & Davis**  
 ARCHITECTS-ENGINEERS-PLANNERS-SURVEYORS  
 3300 N. Ridge Road  
 Suite 100  
 Ellicott City, Maryland  
 21043  
 (301) 461-7478 (MD) (TOLL FREE)  
 (301) 621-4970 (WASH DC)

ENGINEER'S CERTIFICATE  
 I HEREBY CERTIFY THAT THIS PLAN IS A CORRECT AND COMPLETE REPRESENTATION OF THE PROPOSED DEVELOPMENT AND THAT I AM A LICENSED PROFESSIONAL ENGINEER IN THE STATE OF MARYLAND.  
 DATE **10-10-89**  
 [Signature]

DEVELOPER'S CERTIFICATE  
 I HEREBY CERTIFY THAT ALL DEVELOPMENT AND CONSTRUCTION WILL BE DONE IN ACCORDANCE WITH THIS PLAN (IF DEVELOPMENT AND CONSTRUCTION IS REQUIRED) AND THAT ALL RESPONSIBLE PERSONNEL INVOLVED IN THE CONSTRUCTION PROJECT WILL HAVE A SPECIFICATE IN ATTENDANCE AT A DEPARTMENT OF NATURAL RESOURCES APPROVED TRAINING PROGRAM FOR THE CONTROL OF EROSION AND SEDIMENTATION BEFORE BEGINNING THE PROJECT. I ALSO AUTHORIZE PERSONS ON-SITE INSPECTION BY THE HOWARD SOIL CONSERVATION DISTRICT OR THEIR AUTHORIZED AGENTS, AS ARE DEEMED NECESSARY.  
 THIS DEVELOPMENT IS APPROVED FOR EROSION AND SEDIMENT CONTROL BY THE HOWARD SOIL CONSERVATION DISTRICT.  
 DATE **10-10-89**  
 [Signature]

REVIEWED FOR HOWARD SOIL CONSERVATION DISTRICT AND MEETS TECHNICAL REQUIREMENTS.  
 DATE **12/19/89**  
 [Signature]

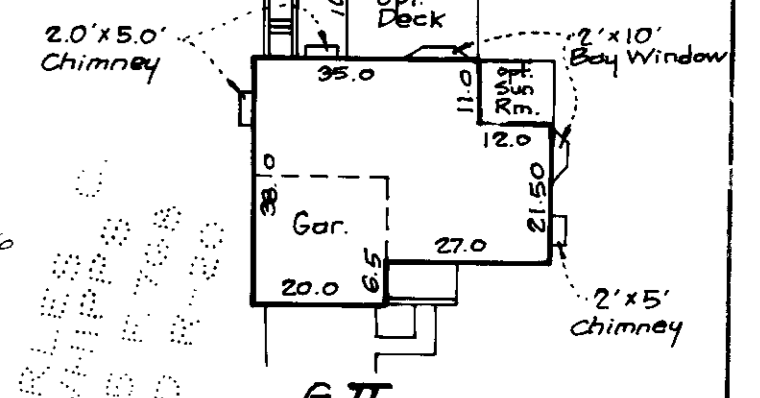
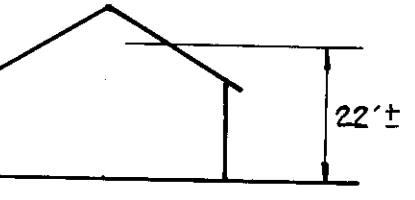
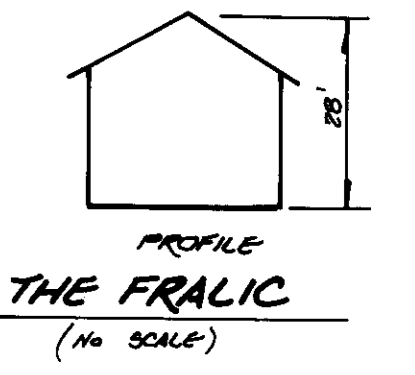
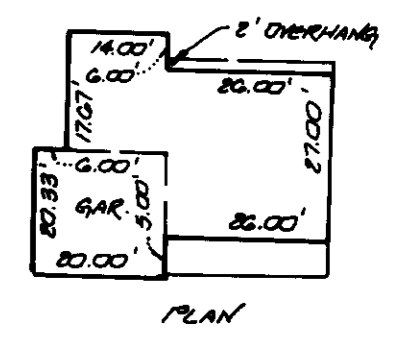
APPROVED: DEPARTMENT OF PLANNING AND ZONING  
 DATE **2-6-90**  
 [Signature]

APPROVED: DEPARTMENT OF PUBLIC WORKS FOR PUBLIC WATER AND SEWER AND STORM DRAINAGE SYSTEMS AND ROADS.  
 DATE **1/16/90**  
 [Signature]

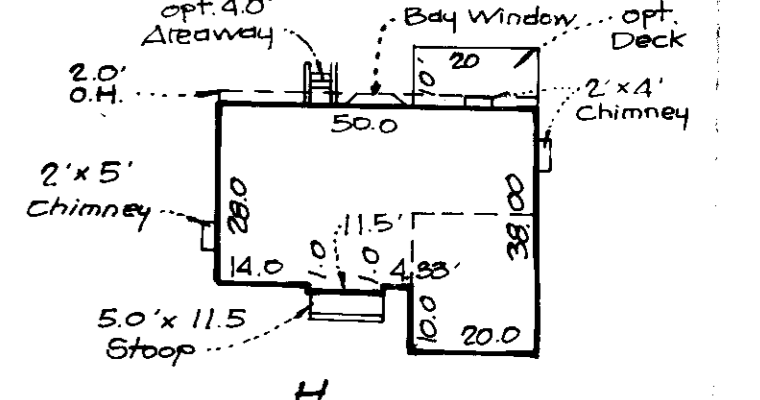
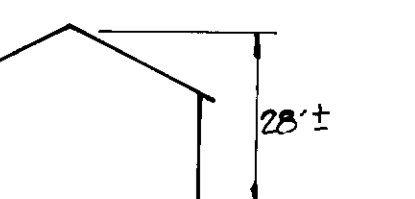
**SITE DEVELOPMENT PLAN**  
**MONTGOMERY MEADOWS**  
 SECTION ONE AREA ONE  
 LOTS 4 TO 58  
 TAX MAP 31 P/O PARCEL 423  
 1ST. ELECTION DISTRICT HOWARD COUNTY, MD  
 SCALE: 1"=30' DATE: APRIL 24, 1989  
 SHEET 4 OF 12  
 DRAWN: [Signature] DESIGNED: B.D.B. (CHECKED) B.D.B. (APPROVED)

BY	NO.	REVISION	DATE
FCR	1	REVISE LOT 4/2	3-8-89
CFB	2	Rev. hse f. grad. lot 20. Add hse. typical	10-20-90
CFB	3	Rev. hse f. grad. lot 41	3-2-92
CFB	4	Rev. hse f. grad. lot 20. Add hse. typical	3-9-93
CFB	5	Rev. hse. grad. and existing topog. lot 412. Add hse. typical	8-18-94
CFB	6	Rev. hse. 17' on lot 22	8-18-94

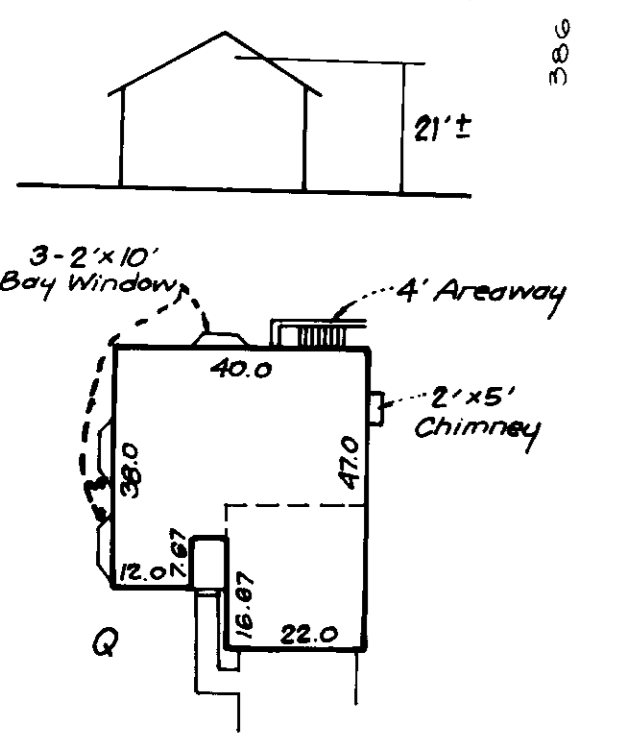
For Revision to Lot 20 by  
CFB, Inc. Dated 10/30/92  
For Revision to Lot 41 by  
CFB, Inc. Dated 3/2/93  
For Revision to Lot 20 by  
CFB, Inc. Dated 3/9/93  
For Revision by CFB, Inc.  
Dated 2/18/94



17515 = 5,838.33 of Min Lot Size



13150 = 6,383.3 of Min Lot Size



**APPROVED**  
DIVISION of  
COMMUNITY PLANNING  
& LAND DEVELOPMENT  
HOWARD COUNTY,  
MARYLAND  
DATE **3-22-89**  
T.P.

NOTE: \* DENOTES HOUSES WITH 21.00' WIDE GARAGE

OWNER/DEVELOPER

**J G Marker**  
Co., Inc.

Builders & Developers  
SUITE 707, 5900 PRINCESS GARDEN PARKWAY  
LANHAM, MD 20706  
PHONE: 455-5588

**Dewberry & Davis**  
ARCHITECTS ENGINEERS PLANNERS SURVEYORS  
5900 Princess Garden Parkway  
Suite 707  
Lanham, MD 20706  
410-461-7275  
410-461-4970

PLANNING ENGINEER'S CERTIFICATE  
I HEREBY CERTIFY THAT THE SUBDIVISION MAP AND SEWER  
MENT CONTROL PLAN AND EROSION CONTROL PLAN  
AND THAT I AM A REGISTERED PROFESSIONAL ENGINEER  
OF THE STATE OF MARYLAND.  
**John A. Kelly** 10-10-89

DEVELOPER'S CERTIFICATE  
I HEREBY CERTIFY THAT THE SUBDIVISION MAP AND SEWER  
MENT CONTROL PLAN AND EROSION CONTROL PLAN  
AND THAT I AM A REGISTERED PROFESSIONAL ENGINEER  
OF THE STATE OF MARYLAND.  
**Daniel Marker, F.G. Marker Co., Inc.** 10-10-89

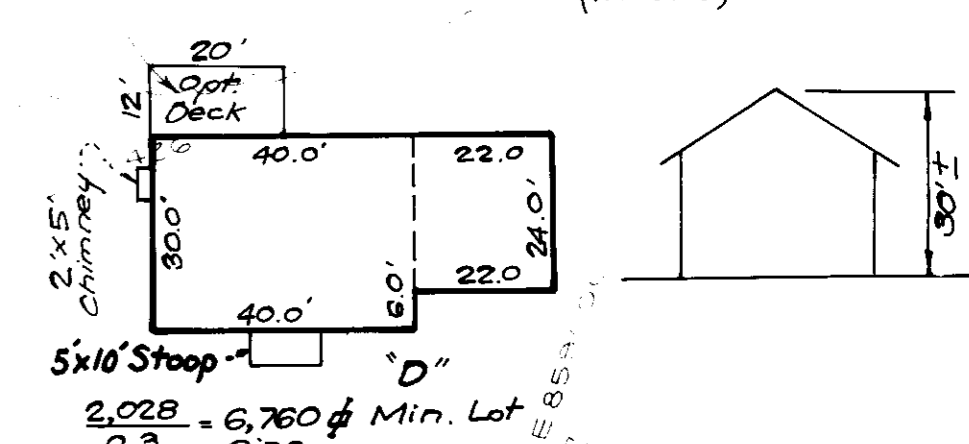
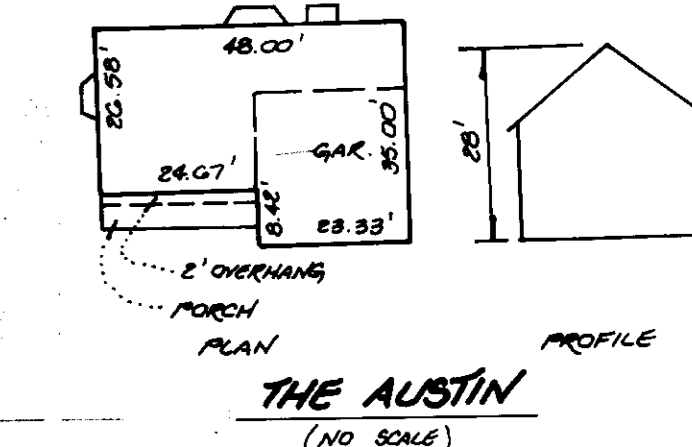
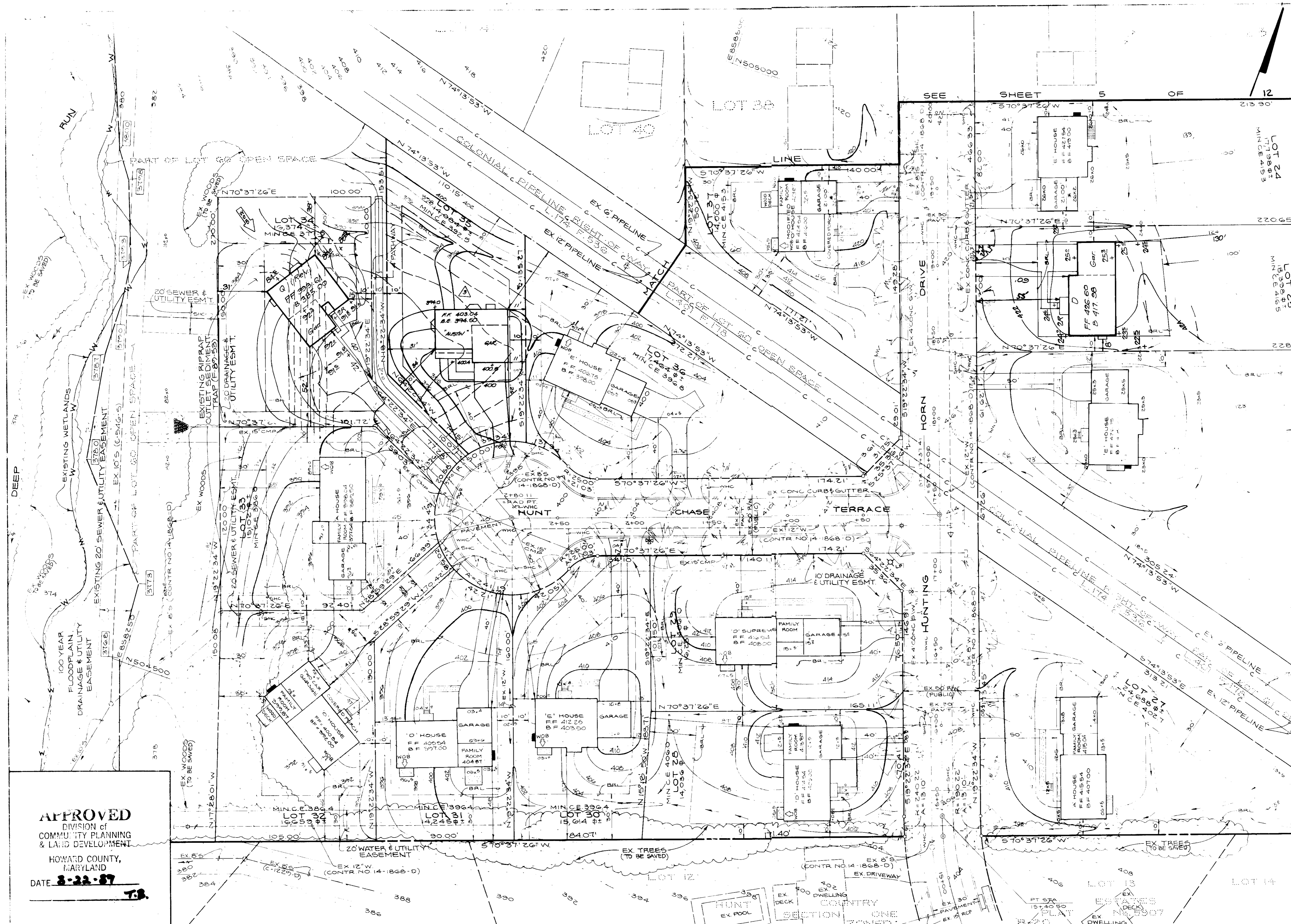
REVIEWED FOR HOWARD SOIL CONSERVATION  
DISTRICT AND MEETS TECHNICAL REQUIREMENTS.  
**James M. Hahn** 12/19/89  
SOIL CONSERVATION SERVICE  
THIS DEVELOPMENT IS APPROVED FOR EROSION  
AND SEDIMENT CONTROL BY THE HOWARD SOIL CON-  
SERVATION DISTRICT.  
**John Pollock** 12/19/89  
HOWARD SOIL CONSERVATION DISTRICT

APPROVED: DEPARTMENT OF PLANNING AND COMMUNITY  
DEVELOPMENT  
**William C. ...** 7-6-90  
DATE  
**James S. ...** 10/19/90  
DATE  
APPROVED: HOWARD COUNTY HEALTH DEPARTMENT FOR  
PUBLIC WATER AND SEWERAGE SYSTEMS.  
**James ...** 1-18-90

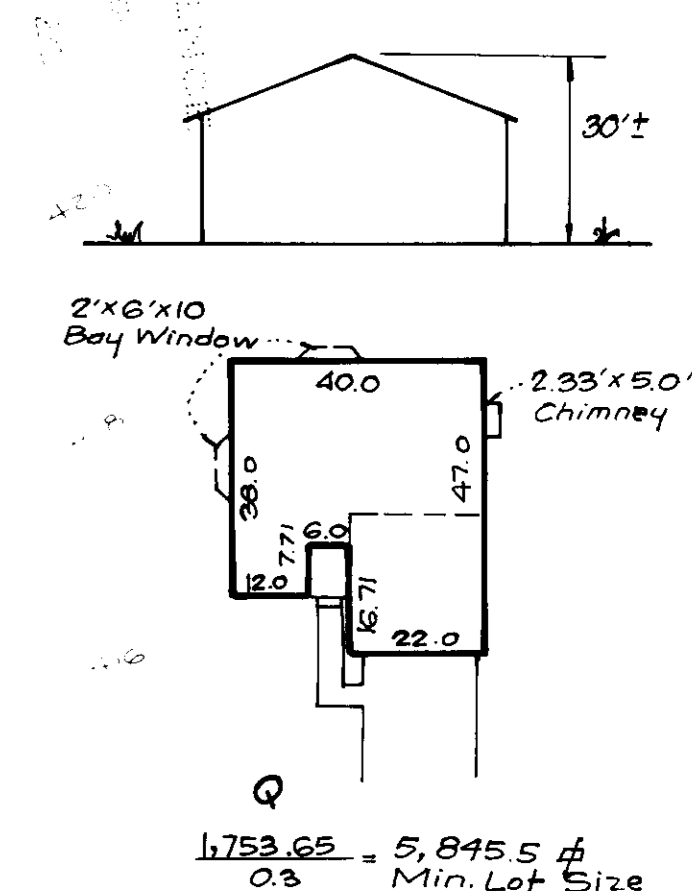
APPROVED: DEPARTMENT OF PUBLIC WORKS  
FOR PUBLIC WATER AND SEWERAGE AND STORM  
DRAINAGE SYSTEMS AND PAVEMENTS.  
**James ...** 1-16-90  
DATE  
**James ...** 1-16-90  
DATE  
SUBDIVISION NAME: MONTGOMERY MEADOWS  
SECTION/AREA: V/1  
LOT NUMBERS: 4-58  
PLAT NO.: 2001, 2002  
BLOCK NO.: 148, 20  
ZONE: R-20  
TAX/ZONE: 3  
ELEC. DIST.: 1ST  
CENSUS TR.: 157  
WATER CODE: SEWER CODE:

SITE DEVELOPMENT PLAN  
**MONTGOMERY MEADOWS**  
SECTION ONE AREA ONE  
LOTS 4 TO 58  
TAX MAP 31 P/O PARCEL 423  
1ST. ELECTION DISTRICT HOWARD COUNTY, MD  
SCALE: 1" = 30' DATE: APRIL 24, 1989  
SHEET 5 OF 12  
DRAWN: WES  
DESIGNED: B.D.B. CHECKED: B.D.B. APPROVED:

REVISIONS		
1	Revise house & grd. lot 34, Add hse. typical by Clark, Finefrock & Sackett, Inc.	6.21.98
2	Rev. hse. & grd. lot 25, Add hse. typical by Clark, Finefrock & Sackett, Inc.	10.21.98
3	REV. HSE. & GRD. ON LOT 35 BY F.C.C.	5.19.98



For Revision to lot 34 by C.F.S., Inc. dated 4/13/93  
For Revision to lot 25 by C.F.S., Inc. dated 10/21/93



**APPROVED**  
DIVISION of  
COMMUNITY PLANNING  
& LAND DEVELOPMENT  
HOWARD COUNTY,  
MARYLAND  
DATE **2-22-89**  
**T.B.**

OWNER/DEVELOPER  
**J G Marker**  
Co., Inc.  
Builders & Townhomes  
SUITE 707, 5900 PRINCESS GARDEN PARKWAY  
LANHAM, MD 20784  
PHONE: 429-6395

**Dewberry & Davis**  
ENGINEERS - ARCHITECTS - SURVEYORS

**Howard County**  
10-10-89

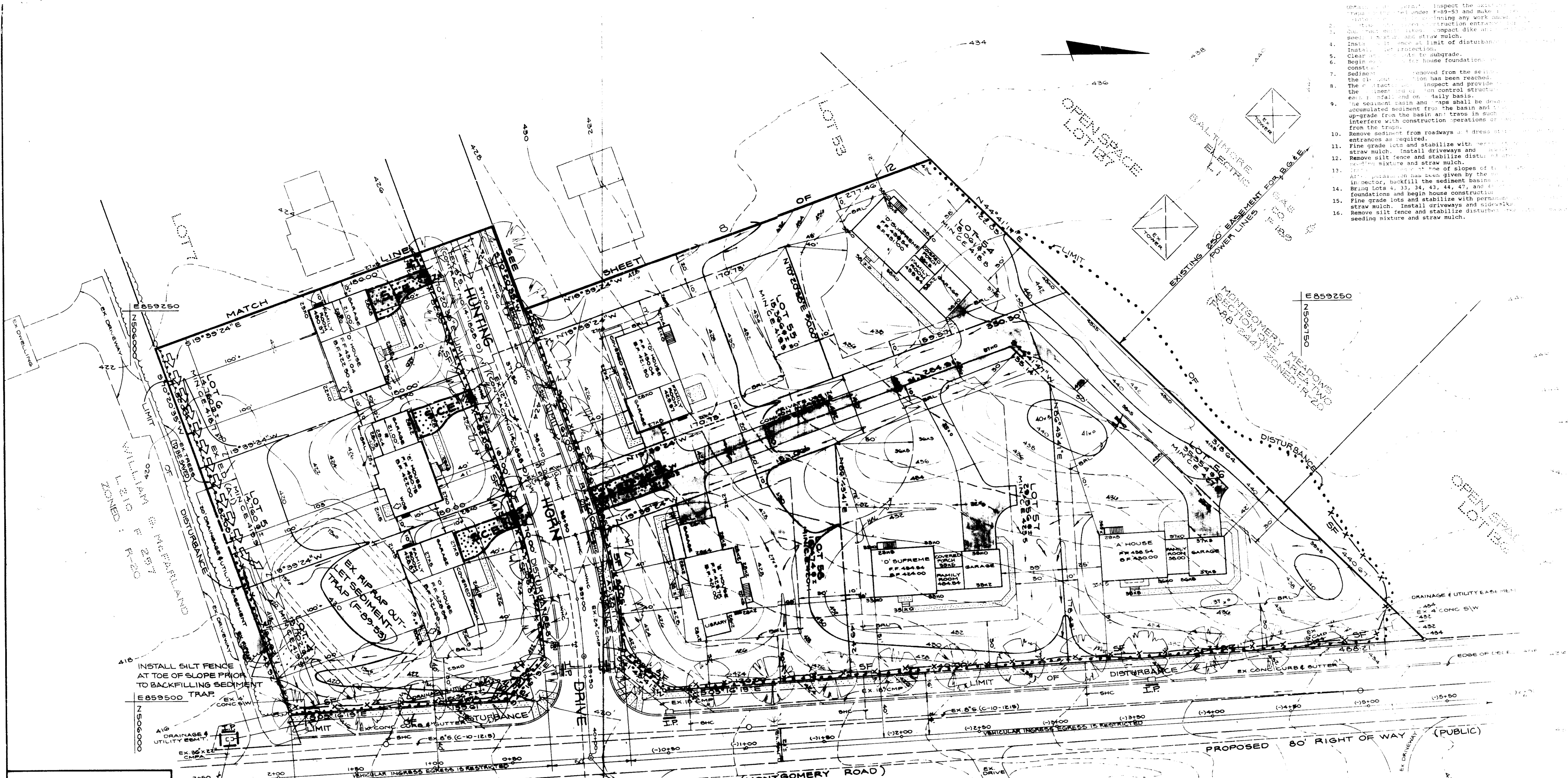
**Daniel Marker**  
DANIEL MARKER, F.G. MARKER CO., INC.  
10-10-89

REVIEWED FOR HOWARD SOIL CONSERVATION DISTRICT AND MEETS TECHNICAL REQUIREMENTS.  
**James H. Hill** 12/19/89  
DATE 12/19/89  
SOIL CONSERVATION SERVICE  
THIS DEVELOPMENT IS APPROVED FOR EROSION AND SEDIMENT CONTROL BY THE HOWARD SOIL CONSERVATION DISTRICT.

DEPARTMENT  
**Ulls** 2.6.90  
**James V. Langley** 10/15/89  
COMMUNITY PLANNING  
LAND DEVELOPMENT

**James P. ...** 1/16/90  
**William B. ...** 1-16-90  
SECTION AREA  
MONTGOMERY MEADOWS  
LOT NUMBERS 4-58

SITE DEVELOPMENT PLAN  
**MONTGOMERY MEADOWS**  
SECTION ONE - AREA ONE  
LOTS 4 TO 58  
TAX MAP 31 P/O PARCEL 420  
1ST. ELECTION DISTRICT HOWARD COUNTY  
SCALE: 1"=30' DATE: APRIL 24, 1989  
SHEET 6 OF 11  
DRAWN BY  
DESIGNED BY  
89-228



1. Inspect the site prior to construction to determine the location of any existing utility lines and structures.
2. Install silt fences at the limit of disturbance and at all access points to the site.
3. Install sediment traps at all access points to the site.
4. Clear the site of any existing vegetation and structures.
5. Begin construction of house foundations.
6. Remove sediment from the site and transport it to a designated disposal area.
7. The contractor shall inspect and provide the sediment control structures on a daily basis.
8. The sediment basin and traps shall be designed to accumulate sediment from the basin and traps in such a way as to not interfere with construction operations.
9. Remove sediment from roadways and address any erosion control structures as required.
10. Fine grade lots and stabilize with permanent seeding mixture and straw mulch.
11. Remove silt fence and stabilize disturbed areas with permanent seeding mixture and straw mulch.
12. After construction has been given by the contractor, backfill the sediment basins and traps.
13. Bring lots 4, 3, 34, 43, 44, 47, and 48 to final grade and begin house construction.
14. Fine grade lots and stabilize with permanent seeding mixture and straw mulch.
15. Remove silt fence and stabilize disturbed areas with permanent seeding mixture and straw mulch.

**APPROVED**  
DIVISION of  
COMMUNITY PLANNING  
& LAND DEVELOPMENT  
HOWARD COUNTY,  
MARYLAND  
DATE: 8-22-89

NOTE: \* DENOTES HOUSES WITH 21.00' WIDE GARAGE

NOTE: ALL SEDIMENT TRAPS SHOWN MUST BE FENCED AND WARNING SIGNS POSTED AROUND THEIR PERIMETER IN ACCORDANCE WITH VOLUME I, CHAPTER 12, OF HOWARD COUNTY DESIGN MANUAL, STORM DRAINAGE.

- LEGEND**
- STABILIZED CONSTRUCTION ENTRANCE (S.C.E.)
  - INLET PROTECTION (I.P.)
  - LIMIT OF DISTURBANCE
  - SILT FENCE (S.F.)
  - EARTH DIKE (E.D.)
  - DRAINAGE FLOW

**OWNER/DEVELOPER**  
**J & M**  
Co., Inc.  
Builders & Developers  
SUITE 707, 9900 PRINCESS GARDEN PARKWAY  
LANHAM, MD 20706  
PHONE: 450-5588

**Dewberry & Davis**  
ARCHITECTS ENGINEERS PLANNERS SURVEYORS  
3300 N. Ridge Road  
Suite 100  
Ellicott City, Maryland  
21043  
301-461-7478 BALTIMORE  
301-621-4970 WASHINGTON

**ENGINEER'S CERTIFICATE**  
I HEREBY CERTIFY THAT THIS PLAN FOR EROSION AND SEDIMENT CONTROL REPRESENTS A PRACTICAL AND WORKABLE PLAN BASED ON MY PERSONAL KNOWLEDGE OF THE SITE CONDITIONS AND THAT IT WAS PREPARED IN ACCORDANCE WITH REQUIREMENTS OF THE HOWARD SOIL CONSERVATION DISTRICT.  
*[Signature]*  
16-10-89

**DEVELOPER'S CERTIFICATE**  
"I/WE CERTIFY THAT ALL DEVELOPMENT AND CONSTRUCTION WILL BE DONE ACCORDING TO THIS PLAN OF DEVELOPMENT AND PLAN FOR EROSION AND SEDIMENT CONTROL AND THAT ALL RESPONSIBLE PERSONNEL INVOLVED IN THE CONSTRUCTION PROJECT WILL HAVE A CERTIFICATE OF ATTENDANCE AT A DEPARTMENT OF MATERIAL RESOURCES APPROVED TRAINING PROGRAM FOR THE CONTROL OF SEDIMENT AND EROSION BEFORE BEGINNING THE PROJECT. I ALSO AUTHORIZE PERIODIC ON-SITE INSPECTION BY THE HOWARD SOIL CONSERVATION DISTRICT OR THEIR AUTHORIZED AGENTS, AS ARE DEEMED NECESSARY."  
*[Signature]*  
10-10-89

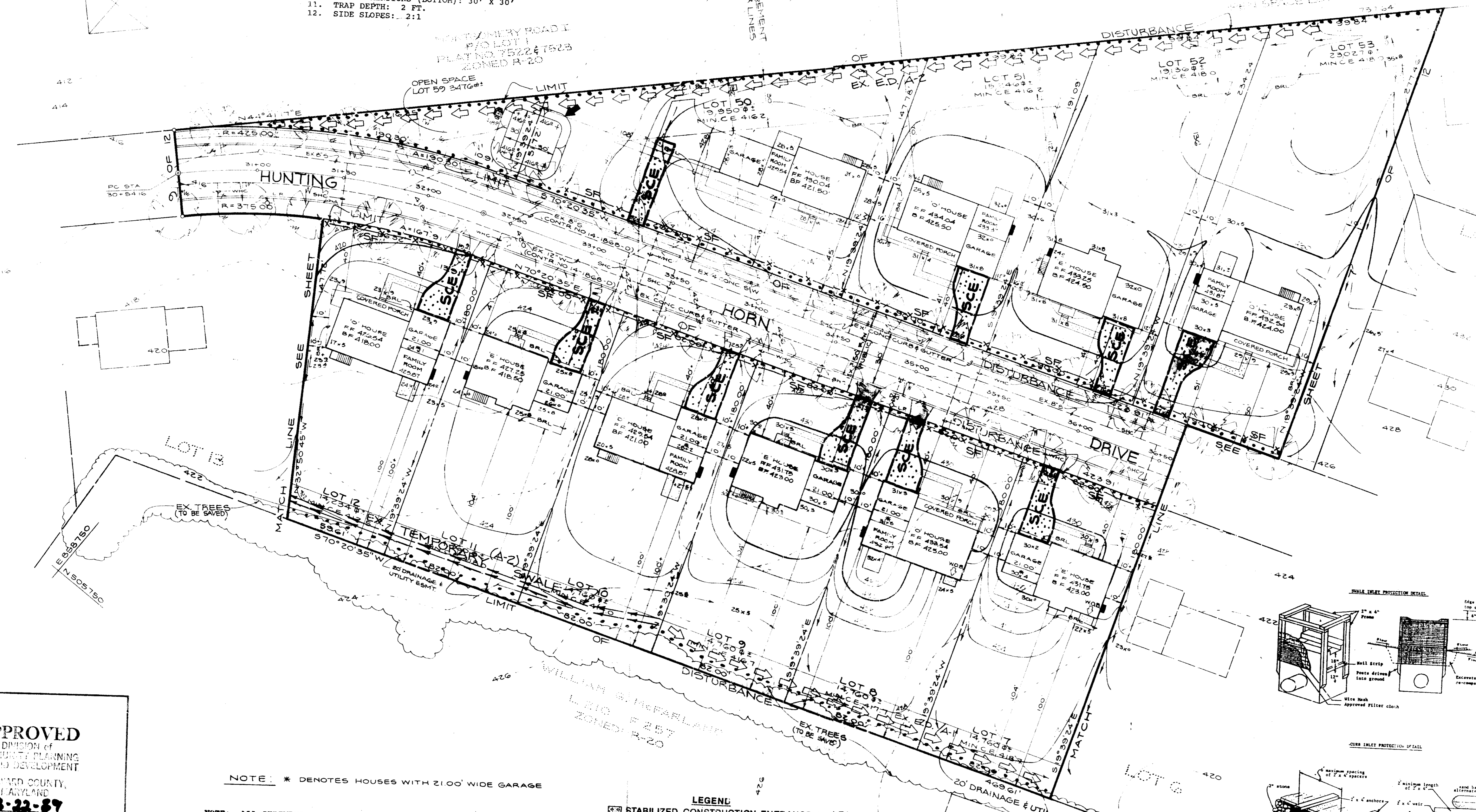
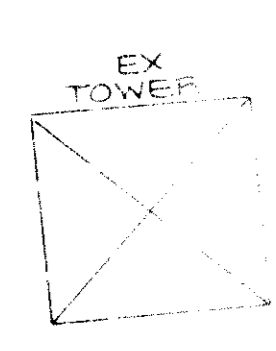
REVIEWED FOR HOWARD SOIL CONSERVATION DISTRICT AND MEETS TECHNICAL REQUIREMENTS.  
*[Signature]* 12/11/89  
HOWARD SOIL CONSERVATION SERVICE  
THIS DEVELOPMENT IS APPROVED FOR EROSION AND SEDIMENT CONTROL BY THE HOWARD SOIL CONSERVATION DISTRICT.  
*[Signature]* 12/19/89  
HOWARD SOIL CONSERVATION SERVICE

APPROVED DEPARTMENT OF PLANNING AND ZONING  
*[Signature]* 2.6.89  
PLANNING DIRECTOR  
*[Signature]* 1/21/89  
CHIEF, DIVISION OF COMMUNITY PLANNING AND LAND DEVELOPMENT  
APPROVED: HOWARD COUNTY HEALTH DEPARTMENT FOR PUBLIC WATER AND SEWERAGE SYSTEMS.  
*[Signature]* 1-18-89  
HEALTH OFFICER

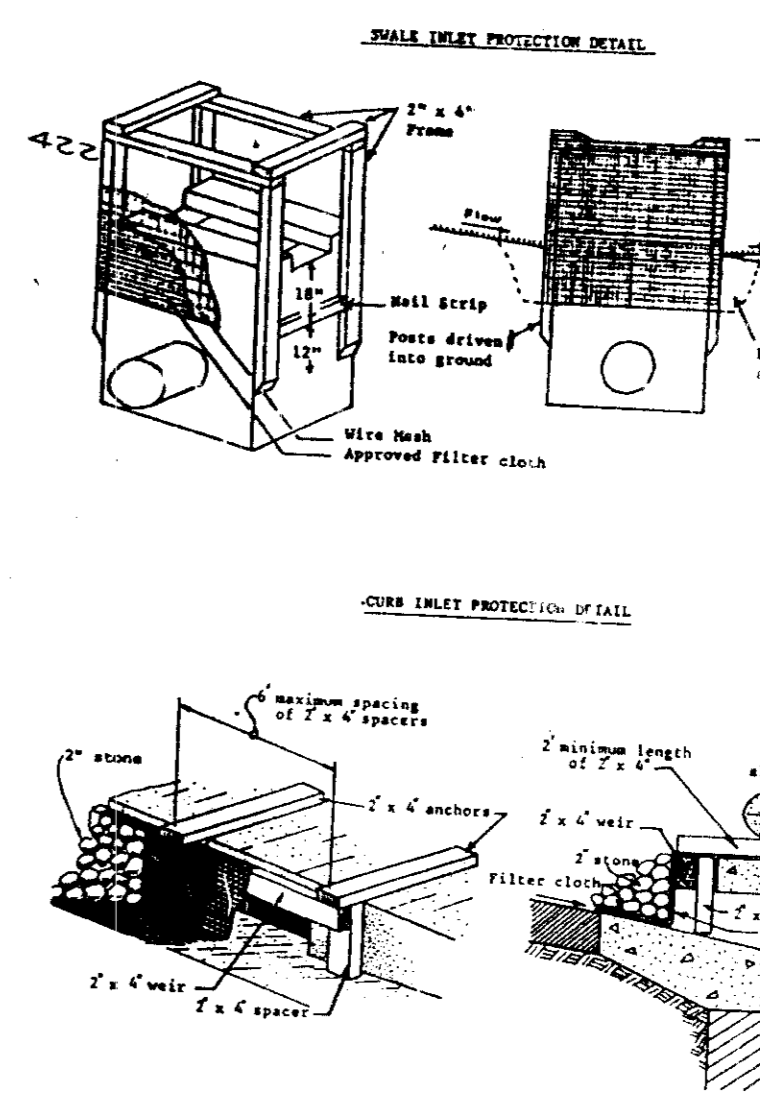
APPROVED: DEPARTMENT OF PUBLIC WORKS FOR PUBLIC WATER AND SEWER AND STORM DRAINAGE SYSTEMS AND ROADS.  
*[Signature]* 1/16/89  
DIRECTOR, PUBLIC WORKS  
*[Signature]* 1-16-89  
CHIEF, BUREAU OF ENGINEERING  
SUBDIVISION NAME: MONTGOMERY MEADOWS  
SECTION/AREA: #1  
LOT NUMBERS: 4-5B  
PLAT NO.: 2001, 2002, 2003  
BLOCK NO.: 148.20  
ZONE: R-20  
TAX/ZONE: 31  
ELEC. DIST.: 157  
CENSUS TR.:  
WATER CODE: SEWER CODE:

**SEDIMENT CONTROL PLAN**  
**MONTGOMERY MEADOWS**  
SECTION ONE AREA ONE  
LOTS 4 TO 5B  
TAX MAP 31 P/O PARCEL 423  
1ST ELECTION DISTRICT HOWARD COUNTY  
SCALE: 1"=30' DATE: APRIL 24, 1989  
SHEET 7 OF 7  
DRAWN: WJG  
DESIGNED: B.D.B.  
CHECKED: J.M.S.  
S.D.P. - 83-22

- DESIGN DATA TRAP NO. 1
1. DRAINAGE AREA: 0.92 AC
  2. TYPE OF TRAP: STONE OUTLET
  3. VOLUME REQUIRED: 1656 CF
  4. VOLUME PROVIDED: 1800 CF
  5. WEIR WIDTH: 4 FT.
  6. WEIR CREST ELEV.: 418.00
  7. TOP OF EMBANKMENT ELEV.: 417.50
  8. CLEANOUT ELEV.: 417.50
  9. BOTTOM ELEV.: 416.00
  10. TRAP DIMENSIONS (BOTTOM): 30' X 30'
  11. TRAP DEPTH: 2 FT.
  12. SIDE SLOPES: 2:1



- Construction Specifications
1. Materials
    - a. Wooden frame is to be constructed of 2x4 lumber.
    - b. Wire mesh must be of sufficient strength to support filter cloth and stone for each inlet, with water falling unobstructed thereon.
    - c. Filter cloth must be of a type approved for the purpose, resistant to sunlight with a minimum life of 10 years. It must be capable of retaining 90% of water and 100% of sediment.
    - d. Stone is to be 2" in size and clean.
    - e. The assembly shall be placed on a concrete pad 12" thick and 24" wide at each end of the structure.
    - f. From the wire mesh and filter cloth, a 2" diameter hole is to be cut in the face of the frame to allow water to pass through. A 2" diameter hole is to be cut in the face of the frame to allow water to pass through the filter cloth.
    - g. This type of protection must be installed at each inlet to the structure.
    - h. Filter cloth and stone replaced when clogged.
    - i. Assume that storm flow does not exceed the design capacity of the temporary earth or asphalt filter.
  2. Procedure
    - a. A 4x4 stake, ditchline or yard line is to be set at each inlet.
    - b. Excavate complete size around inlet.
    - c. Drive 2x4 posts 12" into ground at each end of inlet. Place nail strips between posts. Nail strips to be 1/2" thick and 1/2" wide. Frame (wire) must be 6" high and 12" wide.
    - d. Stretch wire mesh tightly over frame.
    - e. Ends must meet at post.
    - f. Stretch filter cloth tightly over wire mesh.
    - g. Attach wire mesh and filter cloth to frame. From top of frame to 12" above ground, nail strips to be 1/2" thick and 1/2" wide. Nail strips to be 1/2" thick and 1/2" wide. Nail strips to be 1/2" thick and 1/2" wide.
    - h. Backfill around inlet to concrete pad. Backfill to be 24" high and 24" wide.
    - i. If the inlet is not in a ditchline or yard line, a concrete curb is to be at least 6" higher than the ground level.
    - j. This structure must be installed at each inlet to the structure. Fabric replaced when clogged.
  3. Curb Inlet Protection
    - a. Attach a continuous piece of 2x4 lumber to the curb. Length plus 2" to the curb. Length plus 2" to the curb.
    - b. Place a piece of approved filter cloth over curb. Securely attach to curb.
    - c. Securely nail the 2x4 lumber to curb.
    - d. Place the assembly against curb.



OWNER/DEVELOPER  
**J. G. Markers**  
 Co. Inc.  
 Builders & Developers  
 SUITE 707, 5900 PRINCESS GARDENS  
 LANHAM, MD 21051  
 PHONE: 450-5550

APPROVED  
 DIVISION of  
 COMMUNITY PLANNING  
 & LAND DEVELOPMENT  
 HOWARD COUNTY,  
 MARYLAND  
 DATE: 8-22-89  
 T.S.

NOTE: \* DENOTES HOUSES WITH 21.00' WIDE GARAGE

NOTE: ALL SEDIMENT TRAPS SHOWN MUST BE FENCED AND WARNING SIGNS POSTED AROUND THEIR PERIMETER IN ACCORDANCE WITH VOLUME I, CHAPTER 12, OF HOWARD COUNTY DESIGN MANUAL, STORM DRAINAGE.

- LEGEND
- STABILIZED CONSTRUCTION ENTRANCE (S.C.E.)
  - INLET PROTECTION (I.P.)
  - LIMIT OF DISTURBANCE
  - BILT FENCE (S.F.)
  - EARTH DIKE (E.D.)
  - DRAINAGE FLOW

**Dewberry & Davis**  
 ENGINEERS, PLANNERS, SURVEYORS  
 400 N. Ridge Road  
 Lanham, Maryland  
 21051

ENGINEER'S CERTIFICATE  
 I HEREBY CERTIFY THAT THIS PLAN FOR EROSION AND SEDIMENT CONTROL IS A LEGAL AND WORKABLE PLAN BASED ON THE BEST AVAILABLE INFORMATION AND THAT I AM A LICENSED PROFESSIONAL ENGINEER IN THE STATE OF MARYLAND.

STATE OF MARYLAND  
 REGISTERED PROFESSIONAL ENGINEER  
 No. 593  
 Daniel Marker, P.E.  
 10-10-89

DEVELOPER'S CERTIFICATE  
 I HEREBY CERTIFY THAT ALL DEVELOPMENT AND CONSTRUCTION WILL BE DONE ACCORDING TO THIS PLAN OF DEVELOPMENT AND EROSION AND SEDIMENT CONTROL. AND THAT ALL RESPONSIBLE PERSONNEL INVOLVED IN THE CONSTRUCTION PROJECT WILL HAVE A CERTIFICATE OF ATTENDANCE AT A DEPARTMENT OF NATURAL RESOURCES APPROVED TRAINING PROGRAM FOR THE CONTROL OF SEDIMENT AND EROSION BEFORE BEGINNING THE PROJECT. I ALSO AUTHORIZE PERIODIC ON-SITE INSPECTION BY THE HOWARD COUNTY CONSERVATION DISTRICT OR THEIR AUTHORIZED AGENTS, AS ARE DEEMED NECESSARY.

THIS DEVELOPMENT IS APPROVED FOR EROSION AND SEDIMENT CONTROL BY THE HOWARD COUNTY CONSERVATION DISTRICT.

Daniel Marker, P.E. 10-10-89

REVIEWED FOR HOWARD SOIL CONSERVATION DISTRICT AND MEETS TECHNICAL REQUIREMENTS.

James M. Hester 10/19/89  
 U.S. SOIL CONSERVATION SERVICE

THIS DEVELOPMENT IS APPROVED FOR EROSION AND SEDIMENT CONTROL BY THE HOWARD COUNTY CONSERVATION DISTRICT.

Paul Robinson 12/19/89  
 HOWARD COUNTY CONSERVATION DISTRICT

APPROVED: DEPARTMENT OF PLANNING AND ZONING  
 Planning Director 2.6.90  
 DATE

APPROVED: DEPARTMENT OF PUBLIC WORKS FOR PUBLIC WATER AND SEWER AND DRAINAGE SYSTEMS AND ROADS.  
 James J. Shuler 1/16/90  
 DATE

APPROVED: SUBDIVISION NAME MONTGOMERY MEADOWS SECTION/AREA V1 LOT NUMBERS 4-58  
 2000' x 2000' BLOCK NO. 748.20 ZONE R-21 TAX DIST. 158 DIST. 158 TENSUR TR.  
 DATE 1-18-90

SEDIMENT CONTROL PLAN  
 MONTGOMERY MEADOWS  
 SECTION ONE AREA  
 LOTS 4 TO 58  
 TAX MAP 31: P/O PARCEL  
 1ST ELECTION DISTRICT HOWARD  
 SCALE: 1" = 30' DATE 8-22-89  
 SHEET 1 OF 1

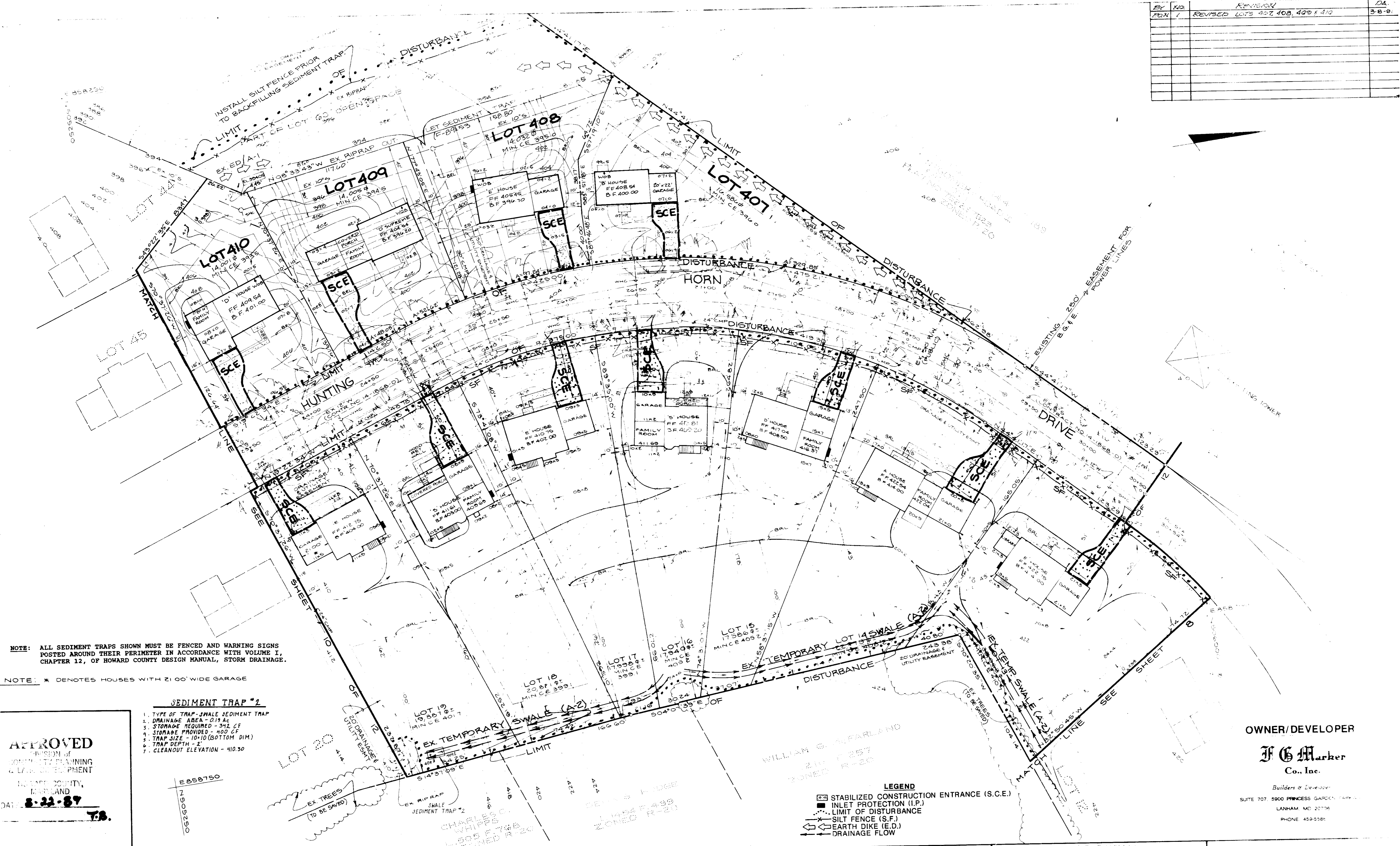
APPROVED: DEPARTMENT OF PLANNING AND ZONING  
 Planning Director 2.6.90  
 DATE

APPROVED: DEPARTMENT OF PUBLIC WORKS FOR PUBLIC WATER AND SEWER AND DRAINAGE SYSTEMS AND ROADS.  
 James J. Shuler 1/16/90  
 DATE

APPROVED: SUBDIVISION NAME MONTGOMERY MEADOWS SECTION/AREA V1 LOT NUMBERS 4-58  
 2000' x 2000' BLOCK NO. 748.20 ZONE R-21 TAX DIST. 158 DIST. 158 TENSUR TR.  
 DATE 1-18-90



BY	NO.	REVISION	DATE
FDN	1	REVISED LOTS 407, 408, 409 & 410	3-8-91



NOTE: ALL SEDIMENT TRAPS SHOWN MUST BE FENCED AND WARNING SIGNS POSTED AROUND THEIR PERIMETER IN ACCORDANCE WITH VOLUME I, CHAPTER 12, OF HOWARD COUNTY DESIGN MANUAL, STORM DRAINAGE.

NOTE: \* DENOTES HOUSES WITH 21.00' WIDE GARAGE

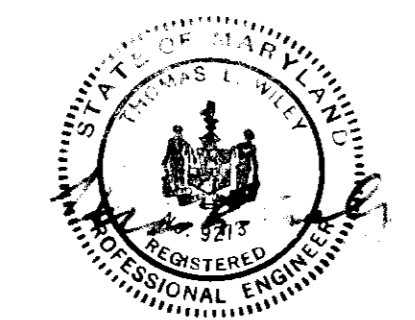
- SEDIMENT TRAP #2**
1. TYPE OF TRAP - SWALE SEDIMENT TRAP
  2. DRAINAGE AREA - 0.19 AC
  3. STORAGE REQUIRED - 342 CF
  4. STORAGE PROVIDED - 400 CF
  5. TRAP SIZE - 10'x10' (BOTTOM DIM)
  6. TRAP DEPTH - 2'
  7. CLEANOUT ELEVATION - 410.30

**APPROVED**  
DIVISION OF  
COMMUNITY PLANNING  
& LAND DEVELOPMENT  
HOWARD COUNTY,  
MARYLAND  
DATE: **8-22-89**  
T.B.

- LEGEND**
- STABILIZED CONSTRUCTION ENTRANCE (S.C.E.)
  - INLET PROTECTION (I.P.)
  - LIMIT OF DISTURBANCE
  - SILT FENCE (S.F.)
  - EARTH DIKE (E.D.)
  - DRAINAGE FLOW

**OWNER/DEVELOPER**  
**F G Marker**  
Co., Inc.  
Builders & Developers  
SUITE 707, 5900 PRINCESS GARDEN PARK  
LANHAM, MD 20776  
PHONE 459-5581

**Dewberry & Davis**  
ENGINEERS, PLANNERS, SURVEYORS



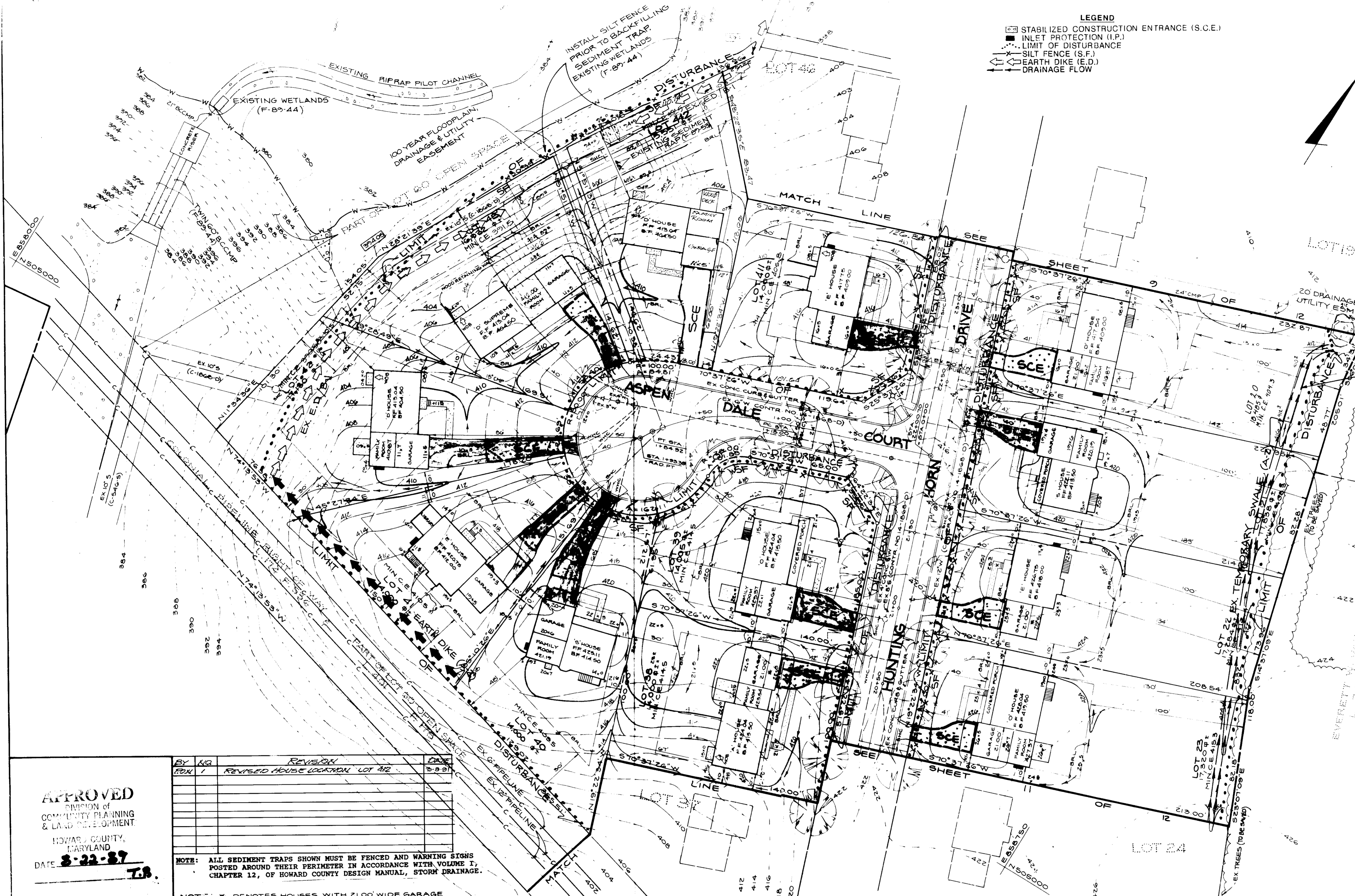
PROFESSIONAL CERTIFICATE  
10-10-89  
Daniel W. Marker  
DANIEL MARKER, F.G. MARKER CO. INC.

REVIEWED FOR HOWARD SOIL CONSERVATION DISTRICT AND MEETS TECHNICAL REQUIREMENTS.  
SOIL CONSERVATION SERVICE  
THIS DEVELOPMENT IS APPROVED FOR EROSION AND SEDIMENT CONTROL BY THE HOWARD SOIL CONSERVATION DISTRICT.  
12/19/89  
Paul Rubenstein  
HOWARD SOIL CONSERVATION DISTRICT

DEPARTMENT OF PLANNING AND ZONING  
266  
1/31/90  
COMMUNITY PLANNING  
LAND DEVELOPMENT  
17840

1/16/90  
1-16-90  
SUBDIVISION NAME: MONTGOMERY MEADOWS  
SECTION/AREA: V1  
LOT NUMBERS: 4 & 8  
PLAT NO.: 2001, 2002, 2003  
BLOCK NO.: 14820  
ZONE: R-20  
TAX/ZONE: 31  
ELEC. DIST.: 1ST  
WATER CODE: 1  
SEWER CODE: 1

**SEDIMENT CONTROL PLAN**  
**MONTGOMERY MEADOWS**  
SECTION ONE - AREAS ON LOTS 4 TO 8  
TAX MAP 31 P/O PARCEL 4  
1ST ELECTION DISTRICT - HOWARD COUNTY  
SCALE - 30 DATE APR 1990  
SHEET 2 OF 2  
DRAWN: [Signature] DESIGNED: [Signature]  
SDP - 89 - 228

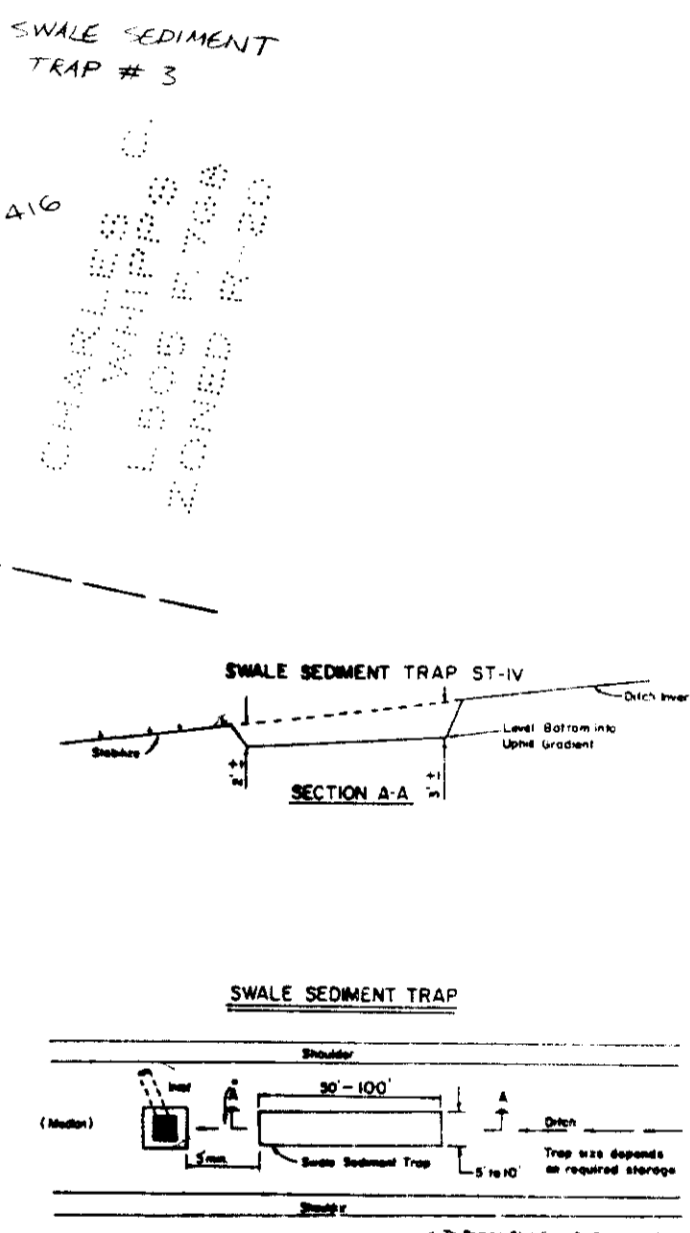


**LEGEND**

- ▣ STABILIZED CONSTRUCTION ENTRANCE (S.C.E.)
- INLET PROTECTION (I.P.)
- LIMIT OF DISTURBANCE
- SILT FENCE (S.F.)
- EARTH DIKE (E.D.)
- DRAINAGE FLOW

**SEDIMENT TRAP #3**

1. TYPE OF TRAP - SWALE SEDIMENT TRAP
2. DRAINAGE AREA - 0.08 AC
3. STORAGE REQUIRED - 1224 CF
4. STORAGE PROVIDED - 1530 CF
5. TRAP SIZE - 10'x5'
6. TRAP DEPTH - 2'
7. CLEANOUT ELEV. - 411.50



1. The swale sediment trap shall be constructed in accordance with the dimensions provided on the design drawings or sized to provide the minimum storage necessary (100 cubic feet of storage for each acre of drainage area).
2. Sediment shall be removed and returned to its original dimensions when the sediment has accumulated to the design depth of the trap. Removed sediment shall be deposited in a suitable area and in such a manner that it will not erode.
3. The structures shall be inspected after each rain and repairs made as needed.
4. Construction operations shall be carried out in such a manner that erosion and siltation shall be minimized.
5. The sediment trap shall be removed and area stabilized when the contributory drainage area has been properly stabilized.
6. The swale sediment trap will be properly backfilled and the swale or ditch reconstructed.

**OWNER/DEVELOPER**

**J & M Marker Co., Inc.**

Builders & Developers

SUITE 707, 5900 PRINCESS GARDEN PARKWAY  
LANSHAM, MD 20706  
PHONE: 459-5590

**APPROVED**

DIVISION OF  
COMMUNITY PLANNING  
& LAND DEVELOPMENT

HOWARD COUNTY,  
MARYLAND

DATE **3-22-89**

BY	NO.	REVISION	DATE
RM	1	REVISED HOUSE LOCATION LOT 19	3-8-89

**NOTE:** ALL SEDIMENT TRAPS SHOWN MUST BE FENCED AND WARNING SIGNS POSTED AROUND THEIR PERIMETER IN ACCORDANCE WITH VOLUME 1, CHAPTER 12, OF HOWARD COUNTY DESIGN MANUAL, STORM DRAINAGE.

**NOTE:** \* DENOTES HOUSES WITH 21.00' WIDE GARAGE

**Dewberry & Davis**

ENGINEERS PLANNERS SURVEYORS

1 Ridge Road  
Crown Point, Maryland  
20843

410-747-8100 BY FAX  
410-747-8100 WASHINGTON

**ENGINEER'S CERTIFICATE**

I HEREBY CERTIFY THAT THIS PLAN FOR EROSION AND SEDIMENT CONTROL REPRESENTS A PRACTICAL AND WORKABLE PLAN BASED ON MY PERSONAL KNOWLEDGE OF THE SITE CONDITIONS AND THAT IT WAS PREPARED IN ACCORDANCE WITH REQUIREMENTS OF THE HOWARD COUNTY DEPARTMENT OF COMMUNITY PLANNING AND LAND DEVELOPMENT.

*James M. Davis*  
10-10-89

**DEVELOPER'S CERTIFICATE**

I HEREBY CERTIFY THAT ALL DEVELOPMENT AND CONSTRUCTION WILL BE DONE ACCORDING TO THIS PLAN OF DEVELOPMENT AND PLAN FOR EROSION AND SEDIMENT CONTROL AND THAT ALL RESPONSIBLE PERSONNEL INVOLVED IN THE CONSTRUCTION PROJECT WILL HAVE A CERTIFICATE OF ATTENDANCE AT A DEPARTMENT OF NATURAL RESOURCES APPROVED TRAINING PROGRAM FOR THE CONTROL OF SEDIMENT AND EROSION BEFORE BEGINNING THE PROJECT. I ALSO AUTHORIZE PERMITTED ON-SITE INSPECTION BY THE HOWARD SOIL CONSERVATION DISTRICT OR THEIR AUTHORIZED AGENTS, AS ARE DEEMED NECESSARY.

*James M. Marker*  
10-10-89

REVIEWED FOR HOWARD SOIL CONSERVATION DISTRICT AND MEETS TECHNICAL REQUIREMENTS.

*James M. Marker*  
12/19/89

THIS DEVELOPMENT IS APPROVED FOR EROSION AND SEDIMENT CONTROL BY THE HOWARD SOIL CONSERVATION DISTRICT.

*Paul Polster*  
12/19/89

APPROVED: DEPARTMENT OF PLANNING AND ZONING

*Ullrich*  
26.90  
PLANNING DIRECTOR DATE

*James M. Marker*  
10/15/89  
CHIEF, DIVISION OF COMMUNITY PLANNING AND LAND DEVELOPMENT DATE

APPROVED: HOWARD COUNTY HEALTH DEPARTMENT FOR PUBLIC WATER AND SEWERAGE SYSTEMS.

*James M. Marker*  
1-17-89  
HEALTH OFFICER DATE

APPROVED: DEPARTMENT OF PUBLIC WORKS FOR PUBLIC WATER AND SEWER AND STORM DRAINAGE SYSTEMS AND ROADS.

*James M. Marker*  
11/6/89  
DEPUTY CHIEF, PUBLIC WORKS DATE

*James M. Marker*  
1-16-89  
CHIEF, BUREAU OF ENGINEERING DATE

SUBDIVISION NAME	SECTION/AREA
MONTGOMERY MEADOWS	W1
LOT NUMBERS 4-5B	
TAX MAP NO.	TAX MAP NO.
3001, 3002	3001, 3002
BLOCK NO.	ZONE
14420	R-20
TAX ZONE	ELEC. DIST.
31	1ST
CENSUS TR.	
WATER CODE	SEWER CODE

**SEDIMENT CONTROL PLAN**

**MONTGOMERY MEADOWS**

SECTION ONE AREA ONE  
LOTS 4 TO 5B

TAX MAP 31 P/O PARCEL 423

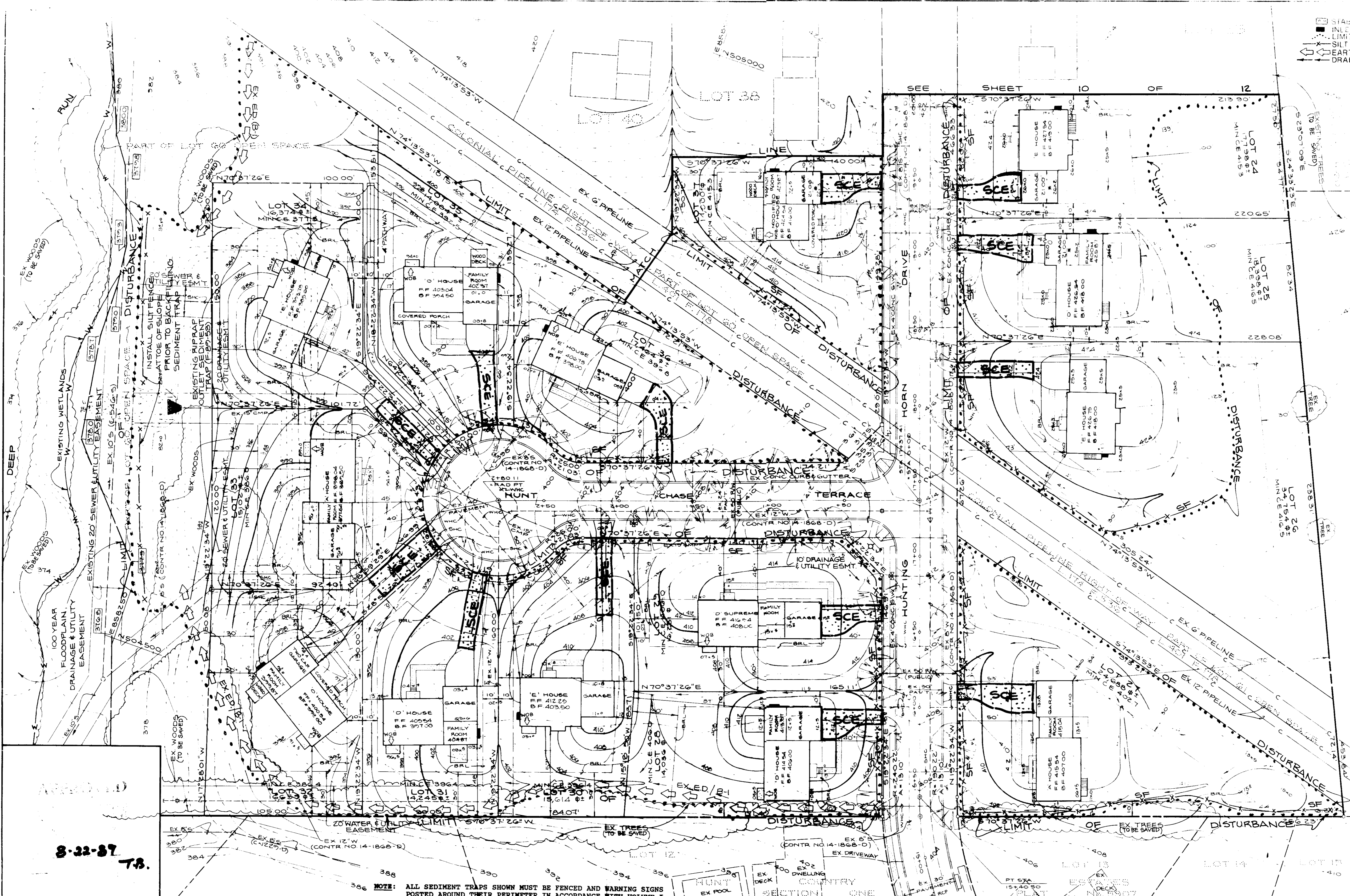
1ST. ELECTION DISTRICT HOWARD COUNTY, MD

SCALE: 1"=30' DATE: APRIL 21, 1989

SHEET 10 OF 17

DRAWN: W.D. H.E.S.  
DESIGNED: B.D.B. CHECKED: B.D.B.

**LEGEND**  
 [Symbol] STABILIZED CONSTRUCTION ENTRANCE (S.C.E.)  
 [Symbol] INLET PROTECTION (I.P.)  
 [Symbol] LIMIT OF DISTURBANCE  
 [Symbol] SILT FENCE (S.F.)  
 [Symbol] EARTH DIKE (E.D.)  
 [Symbol] DRAINAGE FLOW



3-22-87 T.B.

**NOTE:** ALL SEDIMENT TRAPS SHOWN MUST BE FENCED AND WARNING SIGNS POSTED AROUND THEIR PERIMETER IN ACCORDANCE WITH VOLUME 2, CHAPTER 12, OF HOWARD COUNTY DESIGN MANUAL, STORM DRAINAGE

**OWNER/DEVELOPER**  
**J. G. Marker Co., Inc.**  
 Builders & Developers  
 SUITE 707, 5900 PRINCESS GARDEN PARKWAY  
 LANHAM, MD 20706  
 PHONE 459-5586

**Dewberry & Davis**  
 ARCHITECTS ENGINEERS PLANNERS SURVEYORS  
 5800 Ridge Road  
 Suite 100  
 Ellicott City, Maryland  
 21043  
 (301) 461-7475 BALTIMORE  
 (301) 621-4970 WASHINGTON

**ENGINEER'S CERTIFICATE**  
 I HEREBY CERTIFY THAT THIS PLAN FOR EROSION AND SEDIMENT CONTROL REPRESENTS A PRACTICAL AND WORKABLE PLAN BASED ON MY PERSONAL KNOWLEDGE OF THE SITE CONDITIONS AND THAT IT WAS PREPARED IN ACCORDANCE WITH REQUIREMENTS OF THE HOWARD SOIL CONSERVATION DISTRICT.  
 1-10-87

**DEVELOPER'S CERTIFICATE**  
 I HEREBY CERTIFY THAT ALL DEVELOPMENT AND CONSTRUCTION WILL BE DONE ACCORDING TO THIS PLAN OF DEVELOPMENT AND PLAN FOR EROSION AND SEDIMENT CONTROL AND THAT ALL RESPONSIBLE PERSONNEL INVOLVED IN THE CONSTRUCTION PROJECT WILL HAVE A CERTIFICATE OF ATTENDANCE AT A DEPARTMENT OF NATURAL RESOURCES APPROVED TRAINING PROGRAM FOR THE CONTROL OF SEDIMENT AND EROSION BEFORE BEGINNING THE PROJECT. I ALSO AUTHORIZE PERIODIC ON-SITE INSPECTION BY THE HOWARD SOIL CONSERVATION DISTRICT OR THEIR AUTHORIZED AGENTS, AS ARE DEEMED NECESSARY.  
 DANIEL MARKER, F.G. MARKER CO., INC.  
 1-10-87

**REVIEWED FOR HOWARD SOIL CONSERVATION DISTRICT AND MEETS TECHNICAL REQUIREMENTS.**  
 [Signature] 12/14/89  
 SOIL CONSERVATION SERVICE  
 THIS DEVELOPMENT IS APPROVED FOR EROSION AND SEDIMENT CONTROL BY THE HOWARD SOIL CONSERVATION DISTRICT.  
 [Signature] 12/19/89  
 HOWARD SOIL CONSERVATION DISTRICT

**APPROVED: DEPARTMENT OF PLANNING AND ZONING**  
 [Signature] 2.6.90  
 PLANNING DIRECTOR  
**APPROVED: DEPARTMENT OF COMMUNITY PLANNING AND LAND DEVELOPMENT**  
 [Signature] 1/1/90  
 CHIEF, DEPARTMENT OF COMMUNITY PLANNING AND LAND DEVELOPMENT  
**APPROVED: HOWARD COUNTY HEALTH DEPARTMENT FOR PUBLIC WATER AND SEWERAGE SYSTEMS.**  
 [Signature] 1/8-80  
 HEALTH DEPARTMENT

**APPROVED: DEPARTMENT OF PUBLIC WORKS FOR PUBLIC WATER AND SEWER AND STORM DRAINAGE SYSTEMS AND ROADS.**  
 [Signature] 1/16/90  
 STREWER, PUBLIC WORKS  
 [Signature] 1-16-90  
 CHIEF, BUREAU OF ENGINEERING  

SUBDIVISION NAME	SECTION/AREA	LOT NUMBERS 4-58
MONTGOMERY MEADOWS	W1	
PLAT NO. BLOCK NO. TAX/ZONE ELEC. DIST. CENSUS TR		
2001, 2002, 2003 148 20 R-20 31 1ST		

**SEDIMENT CONTROL PLAN**  
**MONTGOMERY MEADOWS**  
 SECTION ONE AREA ONE  
 LOTS 4 TO 58  
 TAX MAP 31 P/O PARCEL 423  
 1ST. ELECTION DISTRICT HOWARD COUNTY MD  
 SCALE: 1"=30' DATE: APRIL 24 1987  
 SHEET 11 OF 12  
 DRAWN: [Signature] DESIGNED: B.D.B. CHECKED: B.H. APPROVED: [Signature]

